

IASI L0 and L1 Daily Monitoring Report **Metop-C**

IASI monitoring team

21/05/2026 00:00:00 - 22/05/2026 00:00:00

1 Introduction

This report provides summary monitoring plots and figures from IASI instrument on the Metop-C satellite retrieved from the IASI L0 and L1 ENG product (3 minutes data packet) for 21/05/2026 00:00:00 - 22/05/2026 00:00:00 .

The monitoring data are extracted on PDU basis.

2 Data quantity 21/05/2026 00:00:00 - 22/05/2026 00:00:00

Product Type	Number	Action
L0 HKTU PDUs	481	-
L0 IASI PDUs	481	-
L1 ENG PDUs	481	-
L1 ENG distinct GEPSSGranule	480	-
L1 DPX PDUs (RM: IASI-HIRS)	0	e
L1 DPS Files (RM: OBS-CAL NWP based)	481	-

Table 1: Data quantity

APID	Seq from	Seq to	Time from	Time to
PX1 (130)	-	-	-	-
PX2 (135)	-	-	-	-
PX3 (140)	-	-	-	-
PX4 (145)	-	-	-	-
IMG (150)	-	-	-	-
VER (160)	16381	0	20260521003542.685	20260521003550.681
VER (160)	2	16382	20260521003550.681	20260521003550.681
VER (160)	-1	3	20260521003550.681	20260521003558.681
VER (160)	16382	0	20260521075238.662	20260521075246.662
VER (160)	3	16383	20260521075246.662	20260521075246.662
VER (160)	-1	4	20260521075246.662	20260521075254.662
VER (160)	16379	0	20260521222622.591	20260521222630.591
VER (160)	0	16380	20260521222630.591	20260521222630.591
VER (160)	-1	1	20260521222630.591	20260521222638.591
AUX (180)	-	-	-	-

Table 2: L0 data gaps

3 Instrument modes

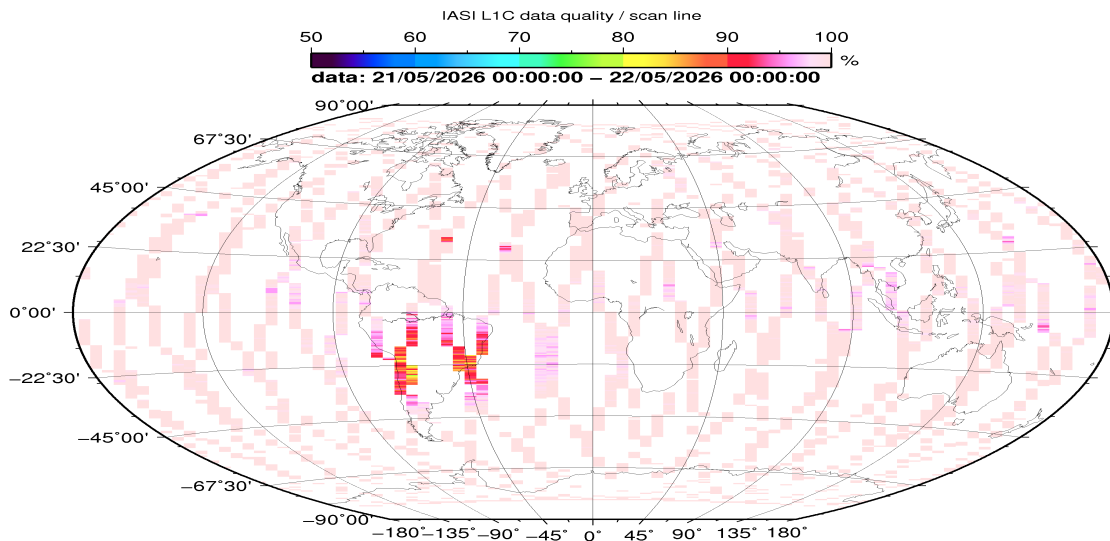
Time	Transition from	Transition to
21/05/2026 00:00:08	-	Normal operation

Table 3: Instrument modes

4 L0 and L1 Data Quality

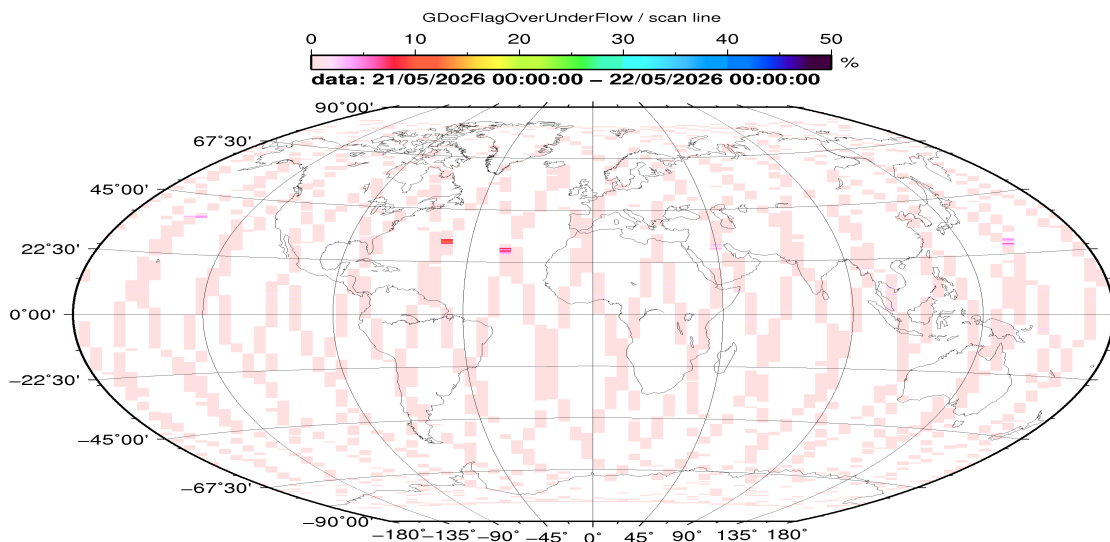
Flag	Value	Action
L0 IASI PDUs	481	-
L1 ENG PDUs	481	-
L1 ENG distinct GEPSGranule	480	-
GQisFlagQual set (PX1)	99.66 %	-
GQisFlagQual set (PX2)	99.69 %	-
GQisFlagQual set (PX3)	99.69 %	-
GQisFlagQual set (PX4)	99.62 %	-
GQisFlagQual set (all)	99.67 %	-

Table 4: Quality flags



CMV 2026 May 22 07:40:36

Figure 1: L1C data quality



CMV 2026 May 22 07:40:43

Figure 2: Flag of Over and Under Flows

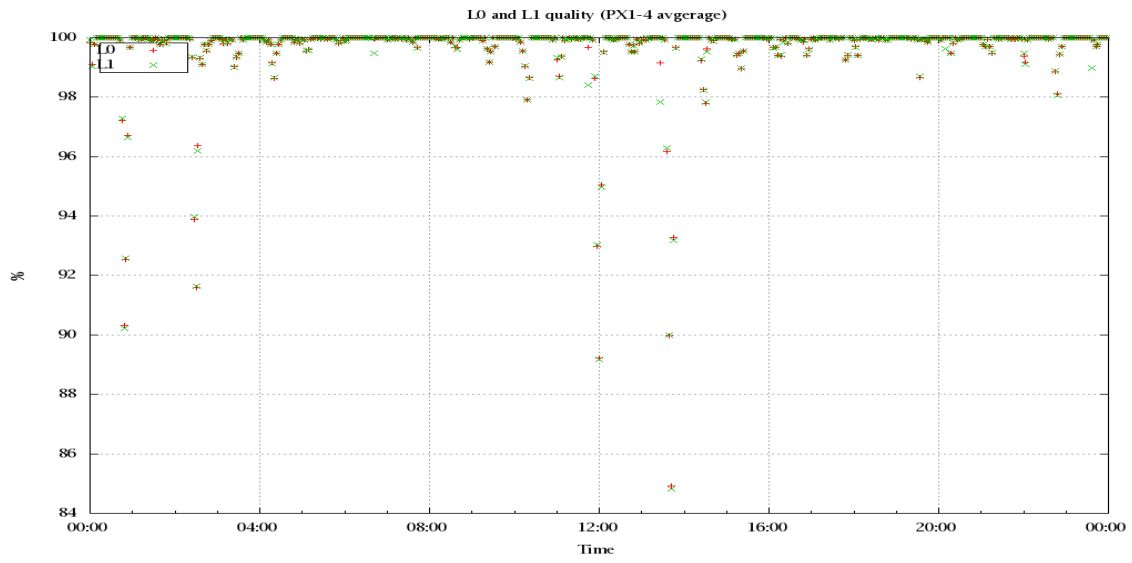


Figure 3: Level 0 and 1C overall quality

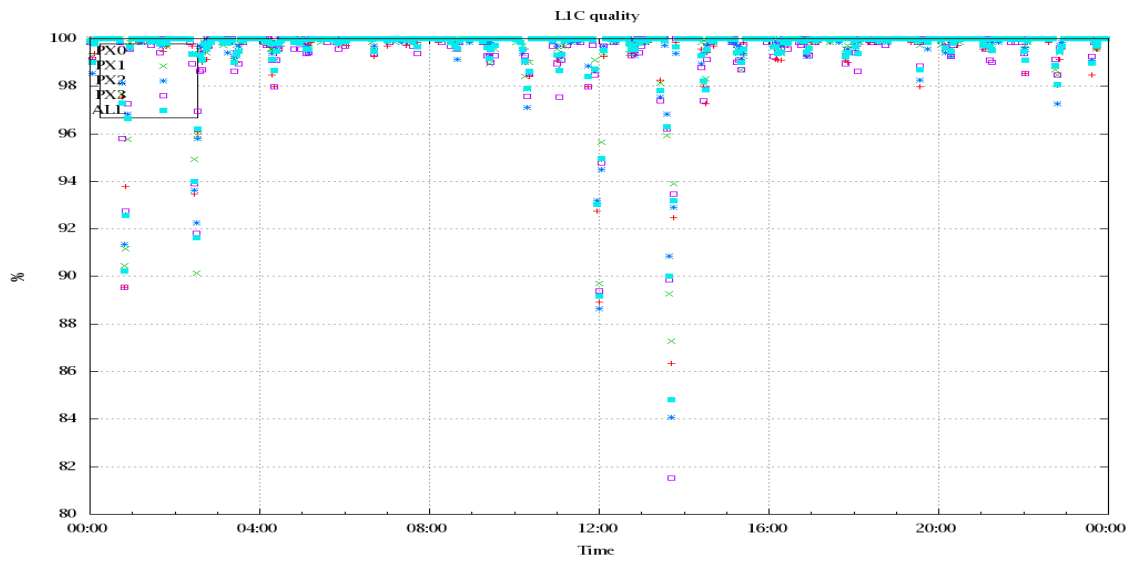


Figure 4: Level 1C quality

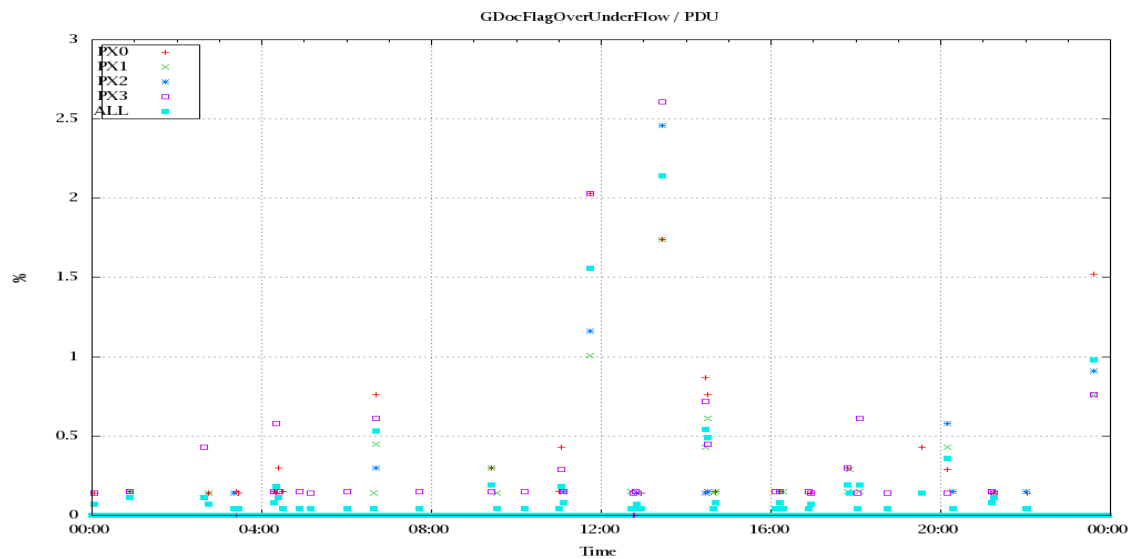


Figure 5: Timeseries of flag of Over and Under Flows

5 Radiance monitoring based on NWP

The radiance monitoring compares the IASI measurements (L1C-eps-products) obtained under clear sky situation over sea with modeled radiances. Cloud identification is based on cloud flag of co-located AVHRR L1B data in addition to information from the IASI L1C clustering analysis here only homogenous situations are taken into account (99.0 percent in first class).

A radiative transfer model (RTM) is feed with co-located ECMWF profiles of T, water vapor and Ozone. Between March 2007 and the 18th of May 2010 RTIASI in Version 4.0 is used. After that date the RTTOV model in V9.3 is used.

Information about the SST is obtained from the AVHRR L1B or taken from AVHRR scenes analysis (CGS only). In the following figures 28 to 34, the so-called radiance anomaly is shown. The radiance anomaly is defined as the difference between the quarter daily radiance average OBS-CAL (over all pixels and scan positions 10 to 20) and the average bias OBS-CAL (over all pixels and scan positions 10 to 20) of the last 30 days.

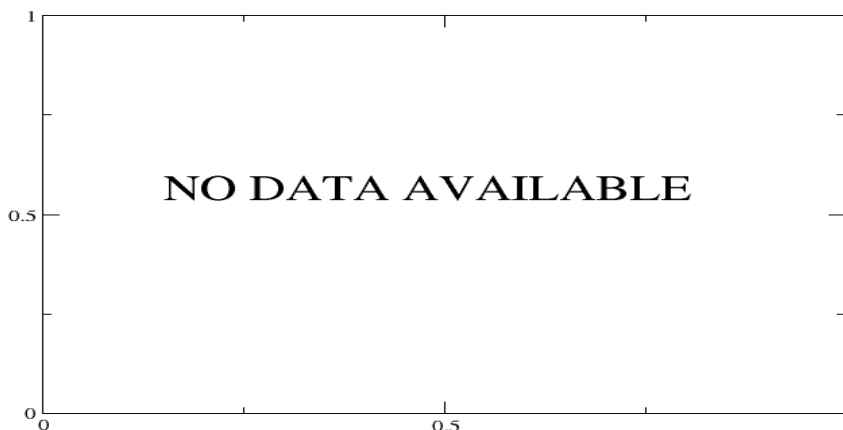


Figure 6: Average Radiance differences: OBS-CAL

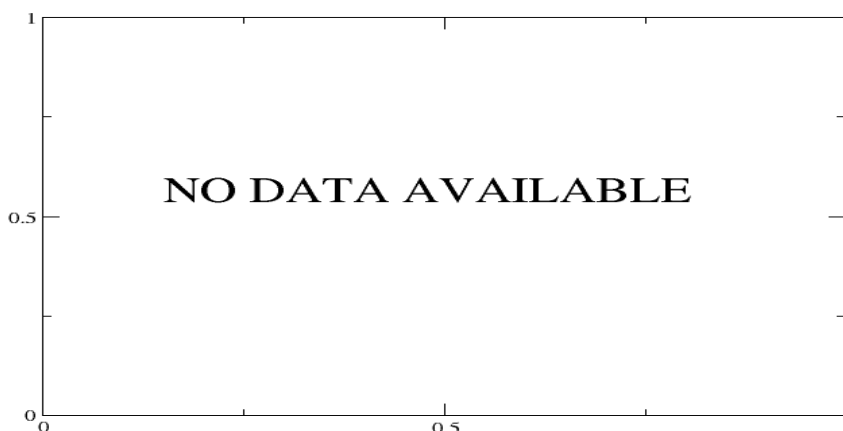


Figure 7: Standard Deviation of Radiance differences



Figure 8: Average Radiance differences: OBS-CAL

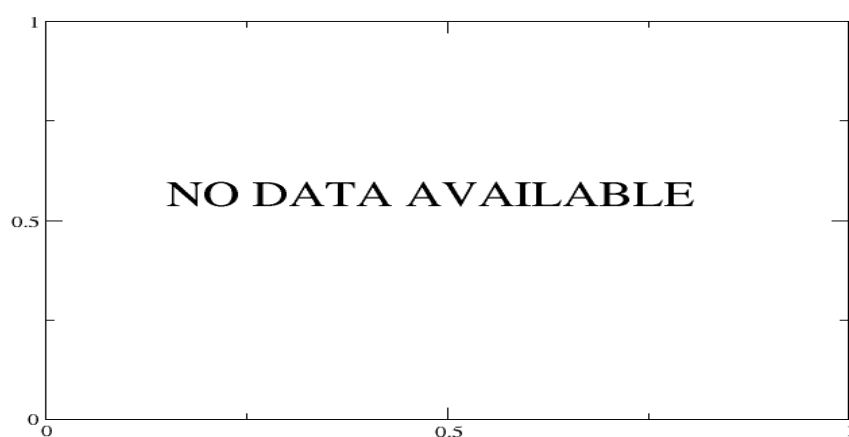


Figure 9: Standard Deviation of Radiance differences

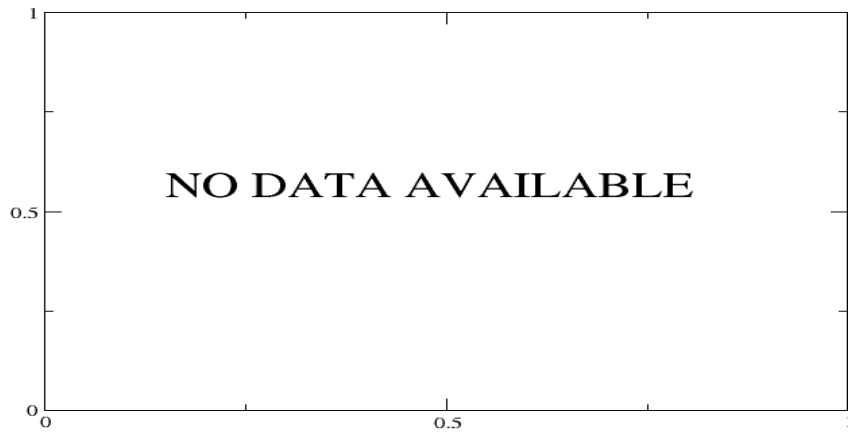


Figure 10: Radiance Anomaly in BT: All Channels

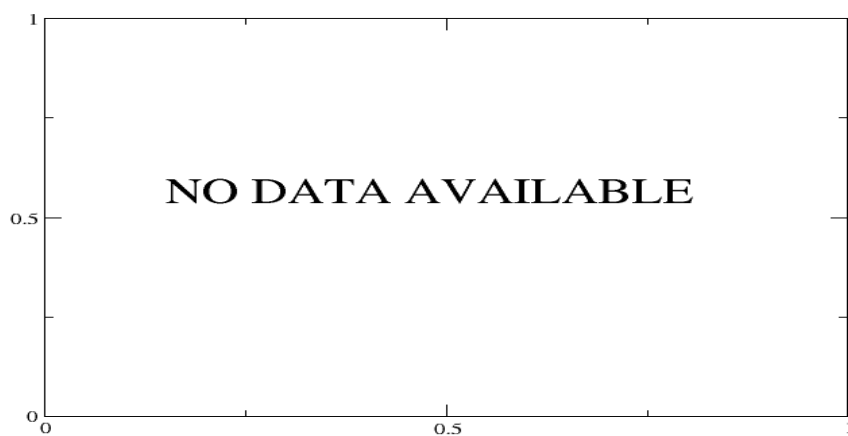


Figure 11: Radiance Anomaly in BT: IASI Band 1

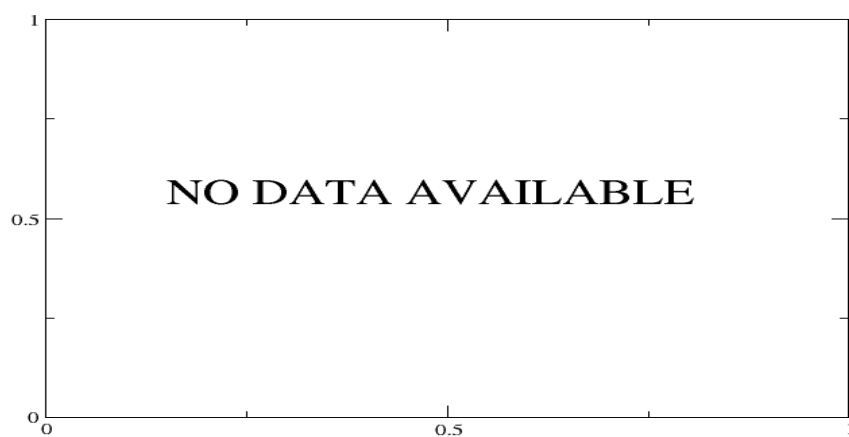


Figure 12: Radiance Anomaly in BT: IASI Band 2

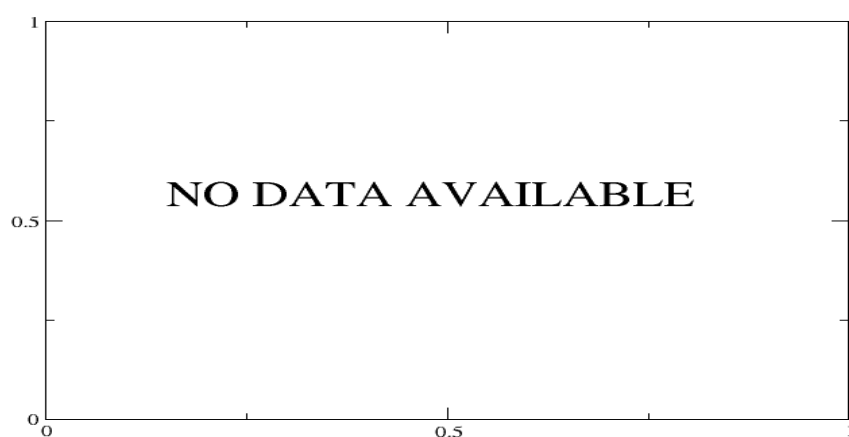


Figure 13: Radiance Anomaly in BT: IASI Band 3

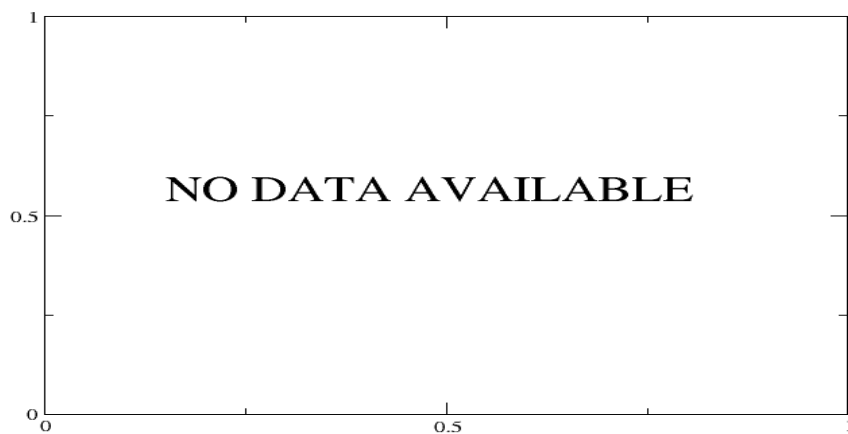


Figure 14: Radiance Anomaly in BT: CO2 14

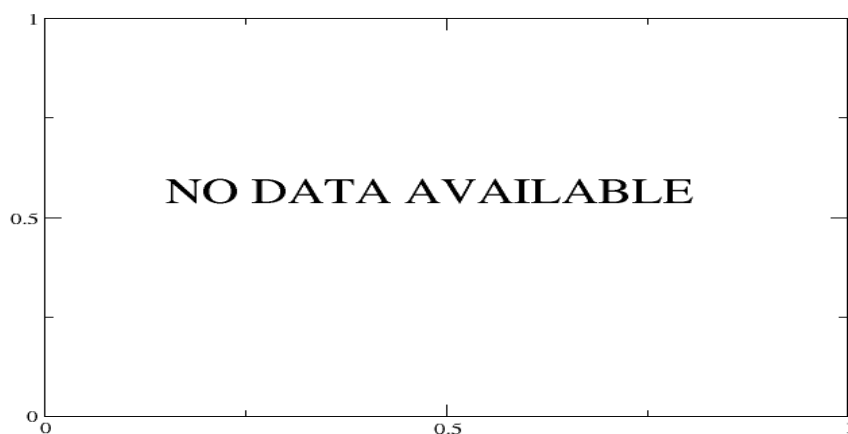


Figure 15: Radiance Anomaly in BT: CO2 4.3



Figure 16: Radiance Anomaly in BT: O3