

IASI L0 and L1 Daily Monitoring Report **Metop-C**

IASI monitoring team

26/03/2025 00:00:00 - 27/03/2025 00:00:00

1 Introduction

This report provides summary monitoring plots and figures from IASI instrument on the Metop-C satellite retrieved from the IASI L0 and L1 ENG product (3 minutes data packet) for 26/03/2025 00:00:00 - 27/03/2025 00:00:00 .

The monitoring data are extracted on PDU basis.

2 Data quantity 26/03/2025 00:00:00 - 27/03/2025 00:00:00

Product Type	Number	Action
L0 HKTM PDUs	481	-
L0 IASI PDUs	481	-
L1 ENG PDUs	480	-
L1 ENG distinct GEPSGranule	481	-
L1 DPX PDUs (RM: IASI-HIRS)	0	e
L1 DPS Files (RM: OBS-CAL NWP based)	480	-

Table 1: Data quantity

APID	Seq from	Seq to	Time from	Time to
PX1 (130)	8661	8663	20250326011510.268	20250326011510.702
PX1 (130)	10576	10578	20250326023630.034	20250326023630.468
PX2 (135)	-	-	-	-
PX3 (140)	3532	3534	20250326005222.481	20250326005222.915
PX3 (140)	4175	4177	20250326005513.289	20250326005513.723
PX4 (145)	3532	3534	20250326005222.481	20250326005222.915
PX4 (145)	8823	8825	20250326011552.862	20250326011553.295
IMG (150)	12388	12390	20250326011510.053	20250326011510.483
VER (160)	12361	12363	20250326010011.875	20250326010011.875
VER (160)	16380	0	20250326024715.854	20250326024723.854
VER (160)	1	16381	20250326024723.854	20250326024723.854
VER (160)	-1	2	20250326024723.854	20250326024731.854
VER (160)	5037	5039	20250326050147.865	20250326050147.865
VER (160)	16381	0	20250326100411.834	20250326100419.834
VER (160)	2	16382	20250326100419.834	20250326100419.834
VER (160)	-1	3	20250326100419.834	20250326100427.834
VER (160)	16382	0	20250326172107.775	20250326172115.775
VER (160)	3	16383	20250326172115.775	20250326172115.775
VER (160)	-1	4	20250326172115.775	20250326172123.775

Continued on next page

Table 2 – continued from previous page

APID	Seq from	Seq to	Time from	Time to
AUX (180)	-	-	-	-

Table 2: L0 data gaps

3 Instrument modes

Time	Transition from	Transition to
26/03/2025 00:06:01	-	Normal operation

Table 3: Instrument modes

4 L0 and L1 Data Quality

Flag	Value	Action
L0 IASI PDUs	481	-
L1 ENG PDUs	480	-
L1 ENG distinct GEPSGranule	481	-
GQisFlagQual set (PX1)	99.64 %	-
GQisFlagQual set (PX2)	99.68 %	-
GQisFlagQual set (PX3)	99.69 %	-
GQisFlagQual set (PX4)	99.62 %	-
GQisFlagQual set (all)	99.66 %	-

Table 4: Quality flags

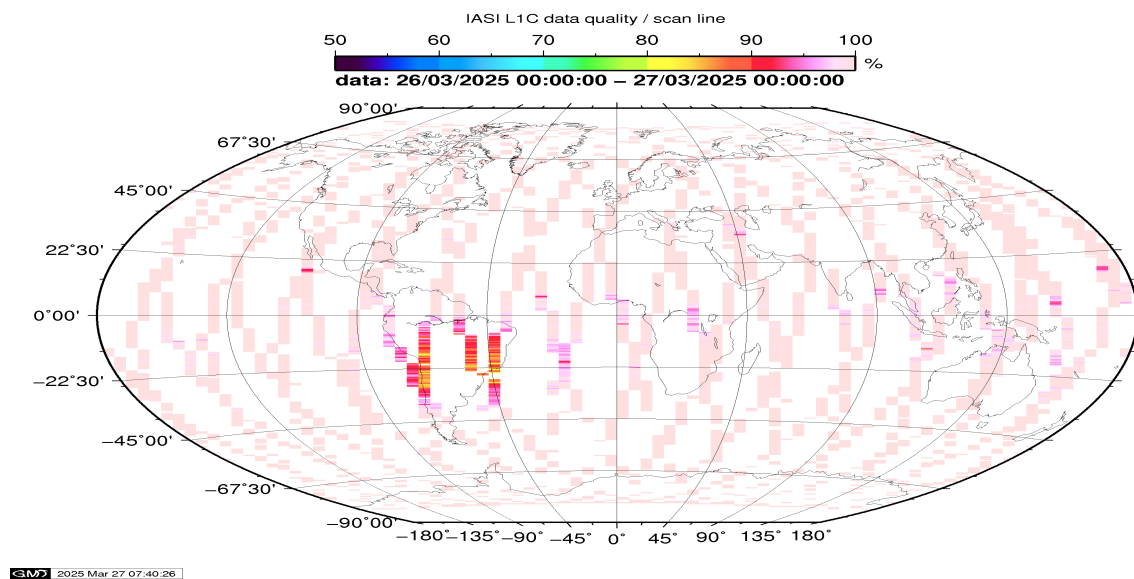


Figure 1: L1C data quality

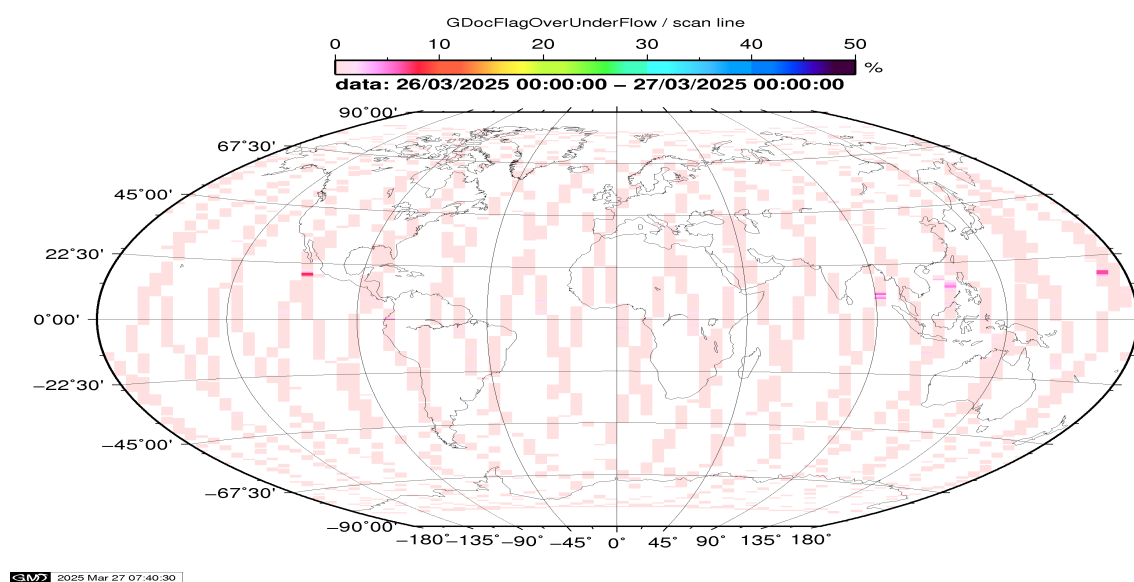


Figure 2: Flag of Over and Under Flows

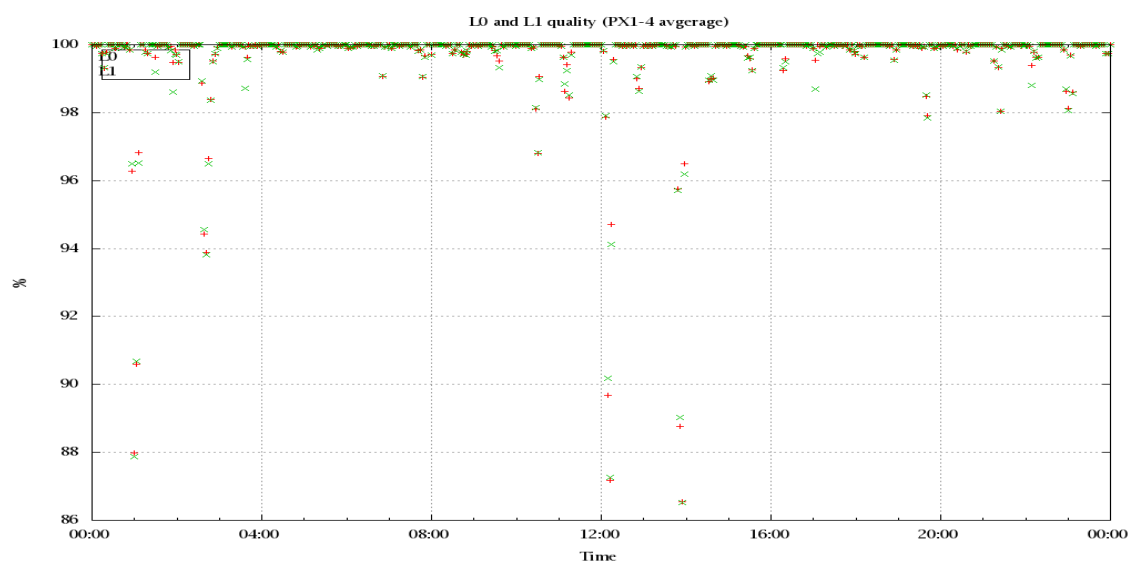


Figure 3: Level 0 and 1C overall quality

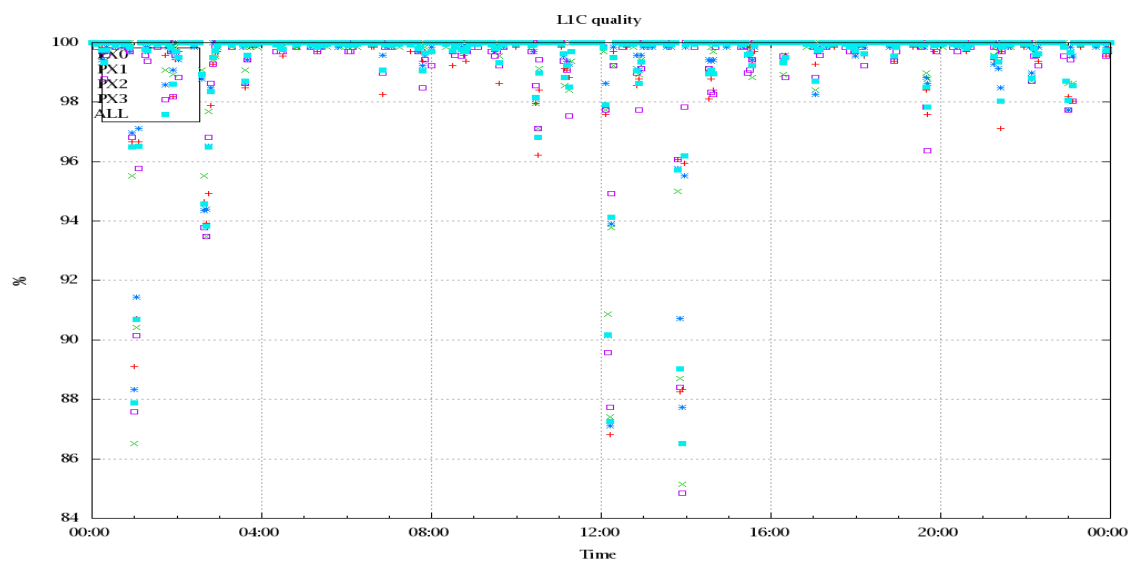


Figure 4: Level 1C quality

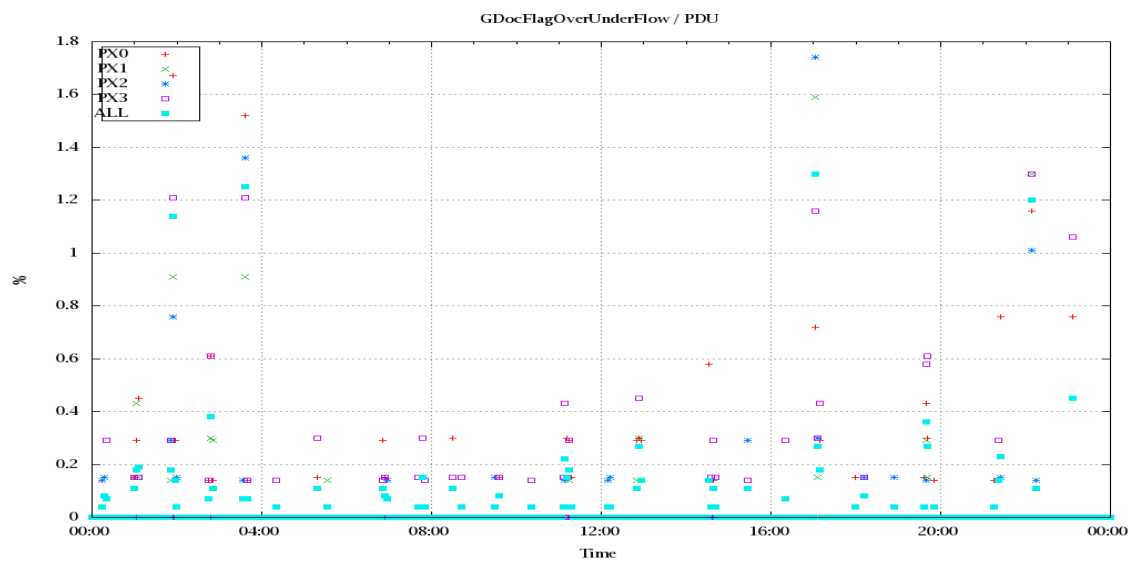


Figure 5: Timeseries of flag of Over and Under Flows

5 Radiance monitoring based on NWP

The radiance monitoring compares the IASI measurements (L1C-eps-products) obtained under clear sky situation over sea with modeled radiances. Cloud identification is based on cloud flag of co-located AVHRR L1B data in addition to information from the IASI L1C clustering analysis here only homogenous situations are taken into account (99.0 percent in first class).

A radiative transfer model (RTM) is feed with co-located ECMWF profiles of T, water vapor and Ozone. Between March 2007 and the 18th of May 2010 RTIASI in Version 4.0 is used. After that date the RTTOV model in V9.3 is used.

Information about the SST is obtained from the AVHRR L1B or taken from AVHRR scenes analysis (CGS only). In the following figures 28 to 34, the so-called radiance anomaly is shown. The radiance anomaly is defined as the difference between the quarter daily radiance average OBS-CAL (over all pixels and scan positions 10 to 20) and the average bias OBS-CAL (over all pixels and scan positions 10 to 20) of the last 30 days.

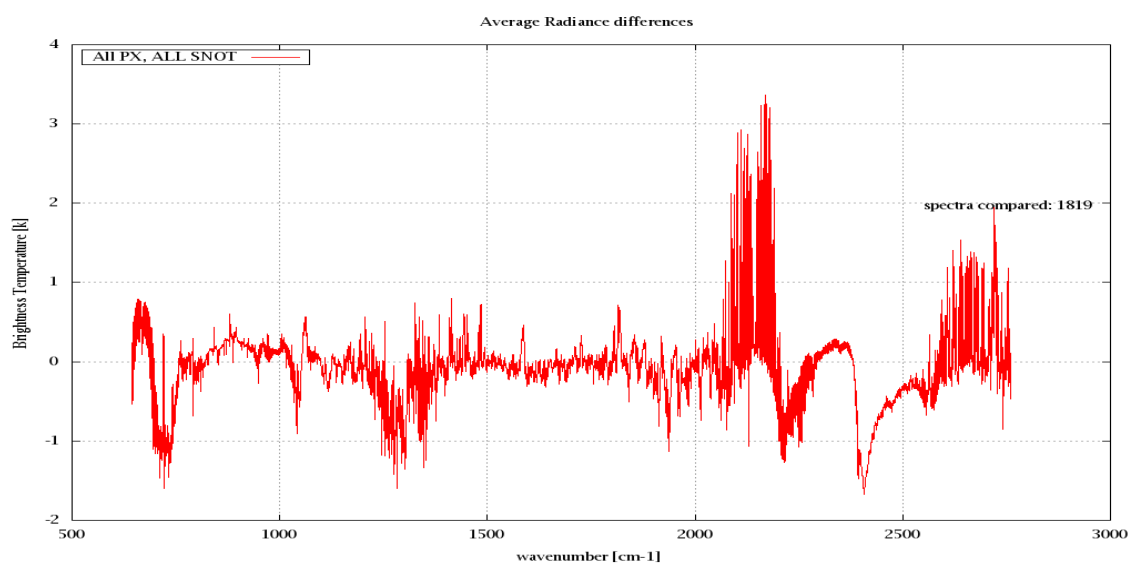


Figure 6: Average Radiance differences: OBS-CAL

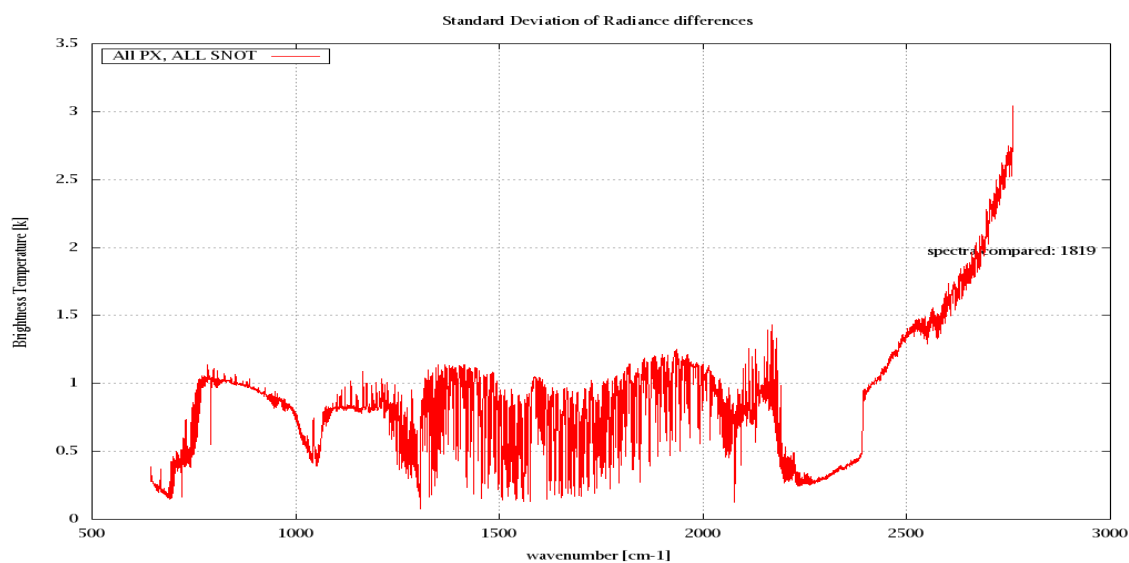


Figure 7: Standard Deviation of Radiance differences

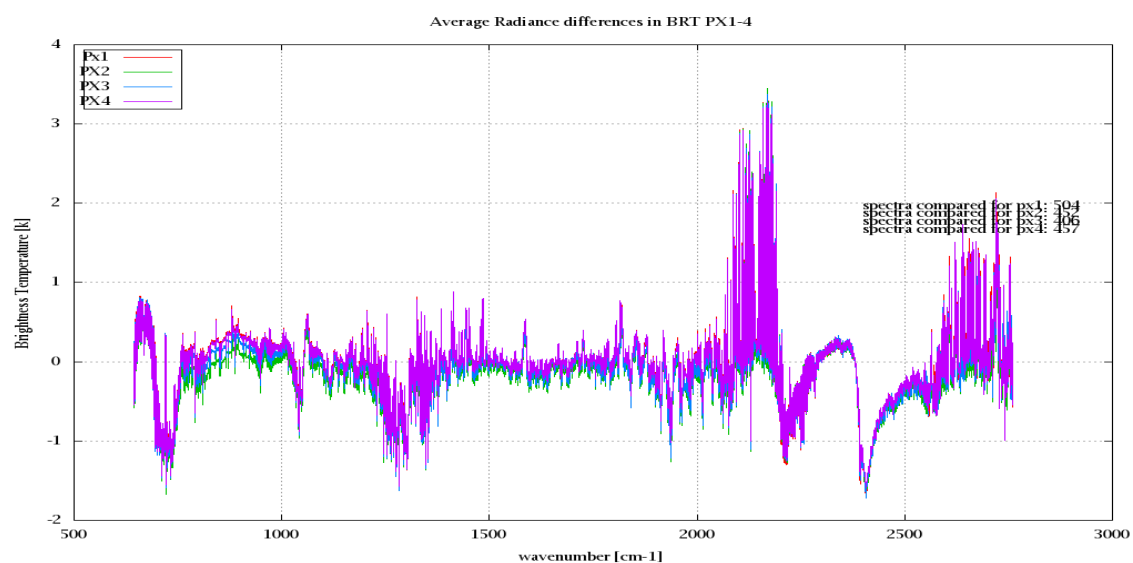


Figure 8: Average Radiance differences: OBS-CAL

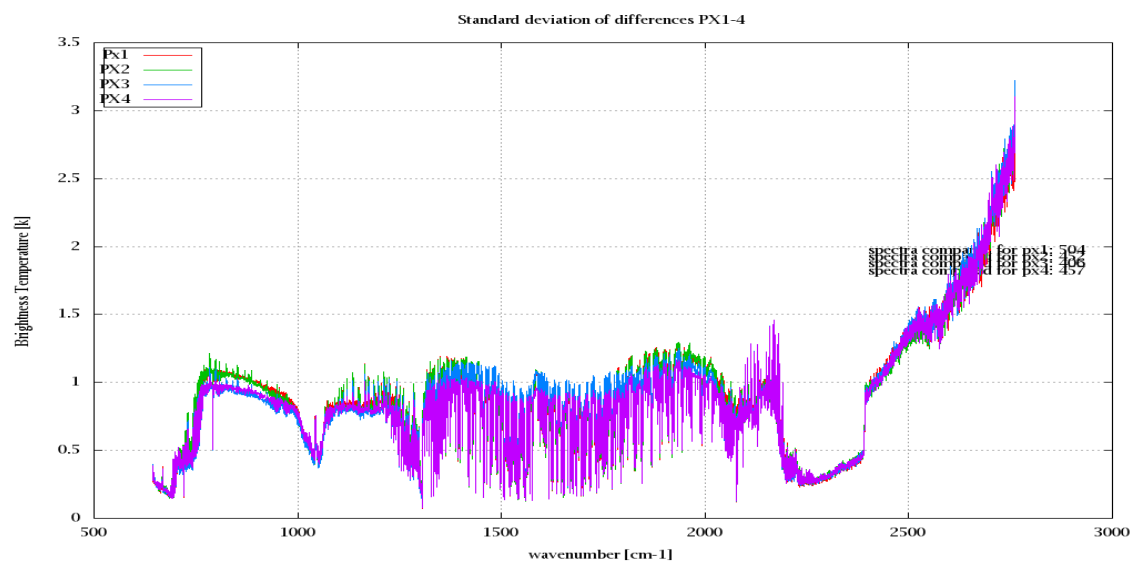


Figure 9: Standard Deviation of Radiance differences

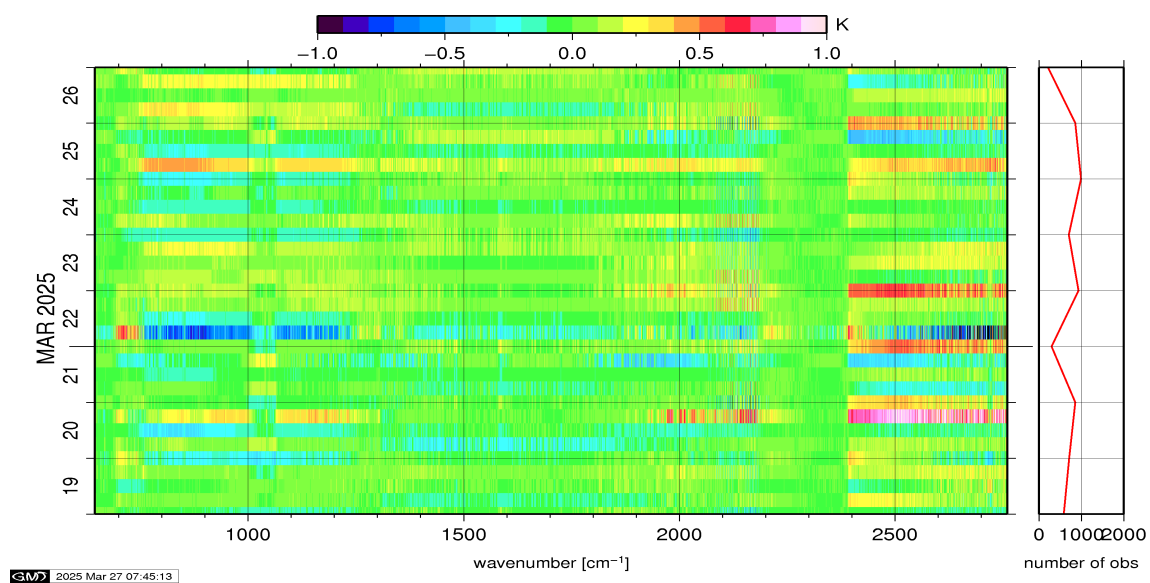


Figure 10: Radiance Anomaly in BT: All Channels

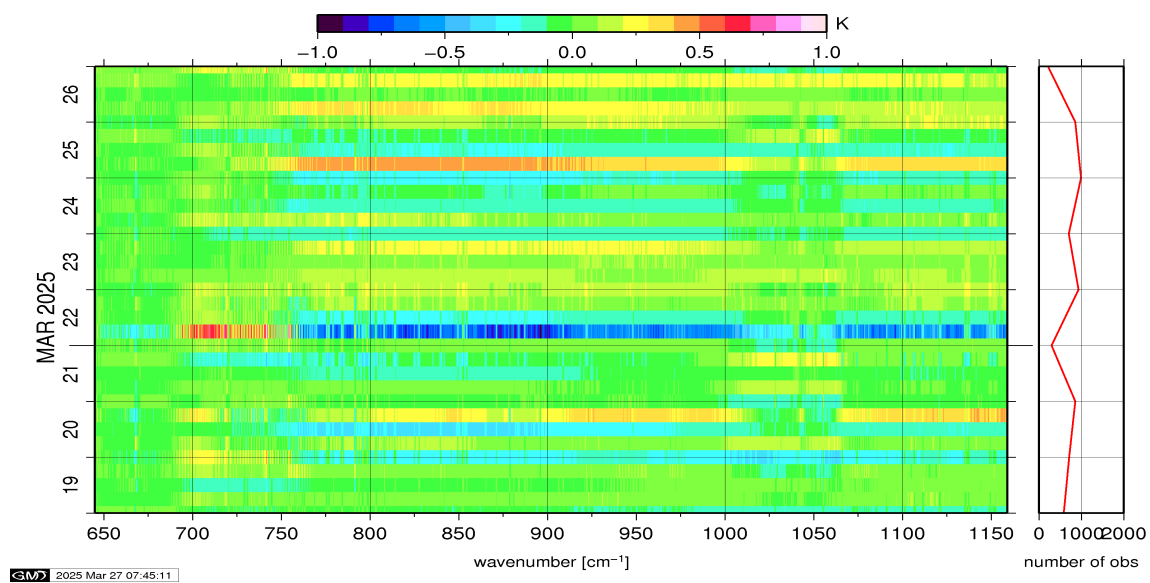


Figure 11: Radiance Anomaly in BT: IASI Band 1

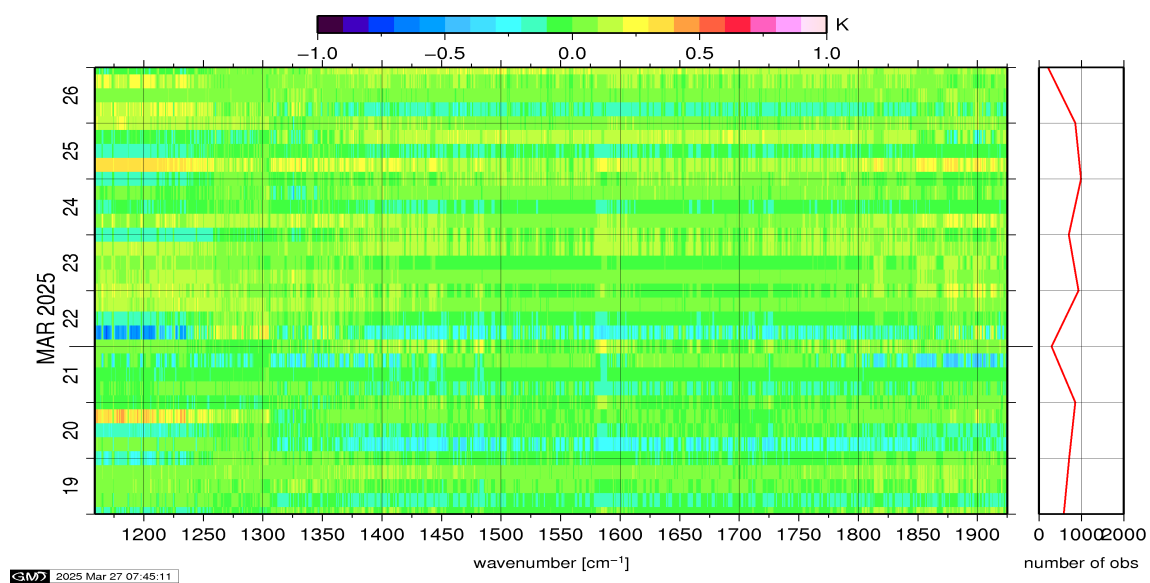


Figure 12: Radiance Anomaly in BT: IASI Band 2

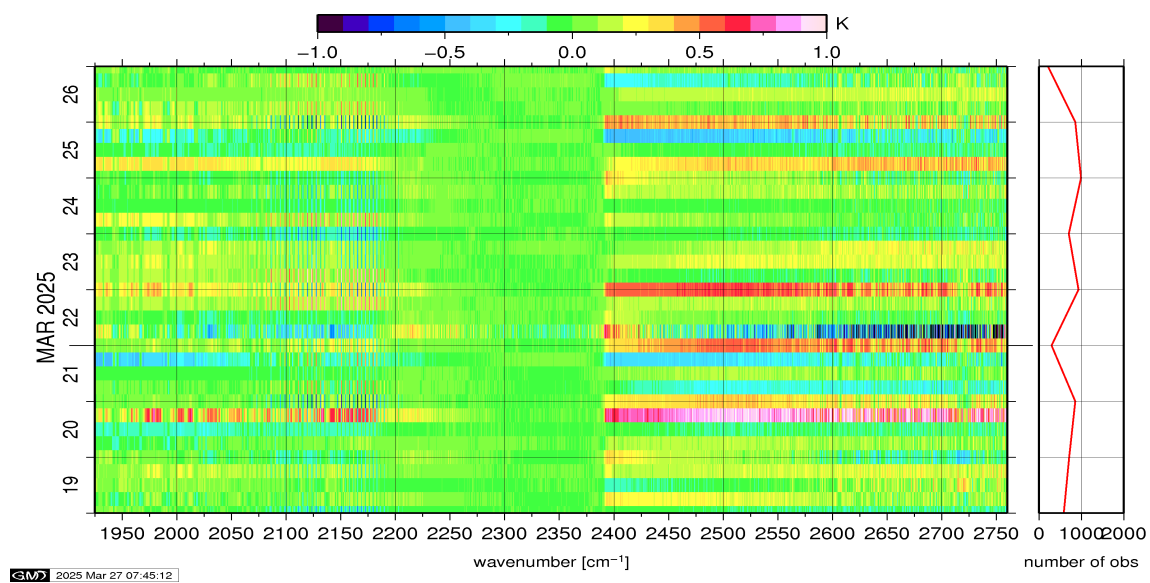


Figure 13: Radiance Anomaly in BT: IASI Band 3

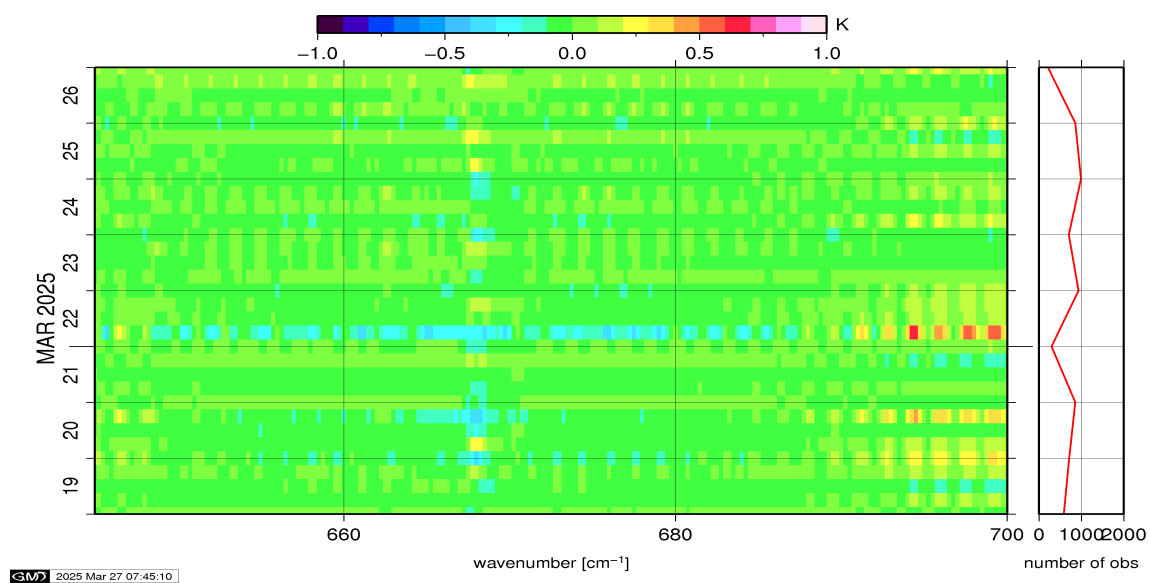


Figure 14: Radiance Anomaly in BT: CO2 14

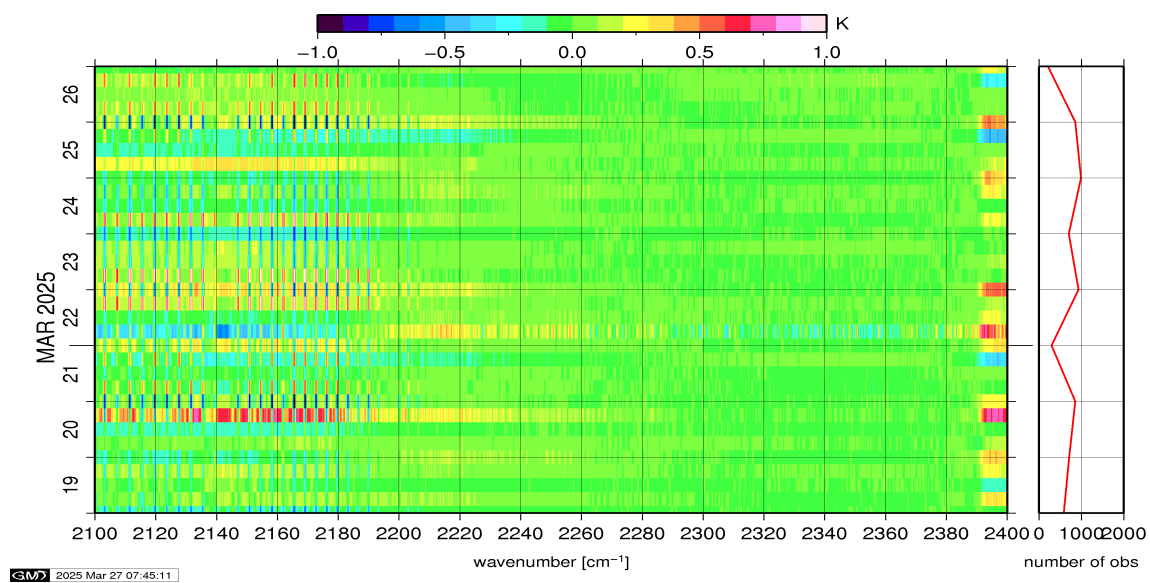


Figure 15: Radiance Anomaly in BT: CO2 4.3

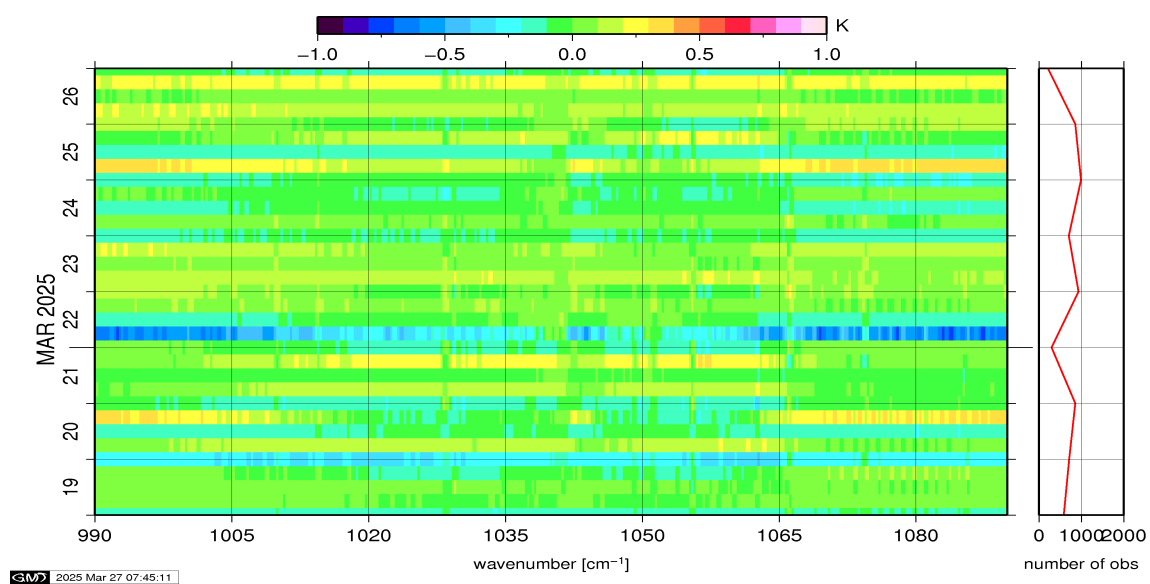


Figure 16: Radiance Anomaly in BT: O3