

IASI L0 and L1 Weekly Monitoring Report

IASI monitoring team

17/02/2014 00:00:00 - 24/02/2014 00:00:00 (Week 08)

1 Introduction

This report provides summary monitoring plots and figures from IASI instrument on the MetOp-A satellite retrieved from the IASI L0 and L1 ENG product (3 minute data packet) for 17/02/2014 00:00:00 - 24/02/2014 00:00:00 .

The monitoring data are extracted on PDU basis.

Data extraction, calibration, processing and statistics are performed at EUMETSAT.

2 Data quantity 17/02/2014 00:00:00 - 24/02/2014 00:00:00

Product Type	Number	Action
L0 HKTM PDUs	3361	-
L0 IASI PDUs	1949	-
L1 ENG PDUs	1948	-
L1 ENG distinct GEPSGranule	1949	-
L1 DPX PDUs (RM: IASI-HIRS)	1947	-
L1 DPS Files (RM: OBS-CAL NWP based)	1948	-

Table 1: Data quantity

APID	Packet type	Packets lost
-	-	-

Table 2: L0 packet losses

3 Instrument modes

Time	Transition from	Transition to
17/02/2014 00:00:04	-	Normal operation
18/02/2014 10:42:12	Normal operation	Auxiliary ASE synchronised
18/02/2014 10:43:16	Auxiliary ASE synchronised	Heater 2
18/02/2014 10:44:20	Heater 2	Auxiliary ASE synchronised
18/02/2014 10:55:16	Auxiliary ASE synchronised	Heater refuse
18/02/2014 16:11:15	Heater refuse	Heater 2
18/02/2014 16:12:03	Heater 2	Heater 1 warm up
18/02/2014 16:13:23	Heater 1 warm up	Heater 2
18/02/2014 17:24:19	Heater 2	Auxiliary ASE synchronised
18/02/2014 17:35:15	Auxiliary ASE synchronised	Heater refuse
19/02/2014 09:09:55	Heater refuse	Heater 2
19/02/2014 09:10:43	Heater 2	Heater 1 warm up
19/02/2014 09:11:31	Heater 1 warm up	Standby
19/02/2014 17:35:31	Standby	Heater 1 warm up
19/02/2014 19:12:19	Heater 1 warm up	Heater 2
21/02/2014 08:50:11	Heater 2	Auxiliary ASE synchronised
21/02/2014 09:21:07	Auxiliary ASE synchronised	Normal operation

Table 3: Instrument modes

4 L0 and L1 Data Quality

Day	L0 quality	L1 quality	L0 PDUs	L1 PDUs
17/02/2014	99.50 %	99.49 %	480	480
18/02/2014	99.55 %	99.51 %	215	214
21/02/2014	99.50 %	99.48 %	293	294
22/02/2014	99.53 %	99.52 %	480	480
23/02/2014	99.51 %	99.50 %	480	480

Table 4: Quality overview

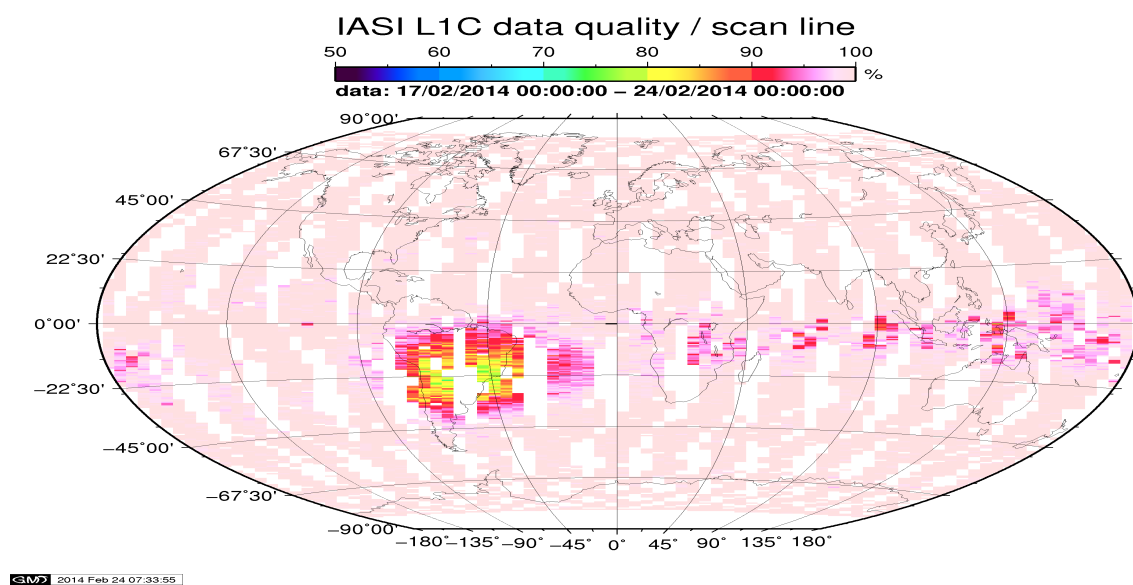


Figure 1: L1C data quality

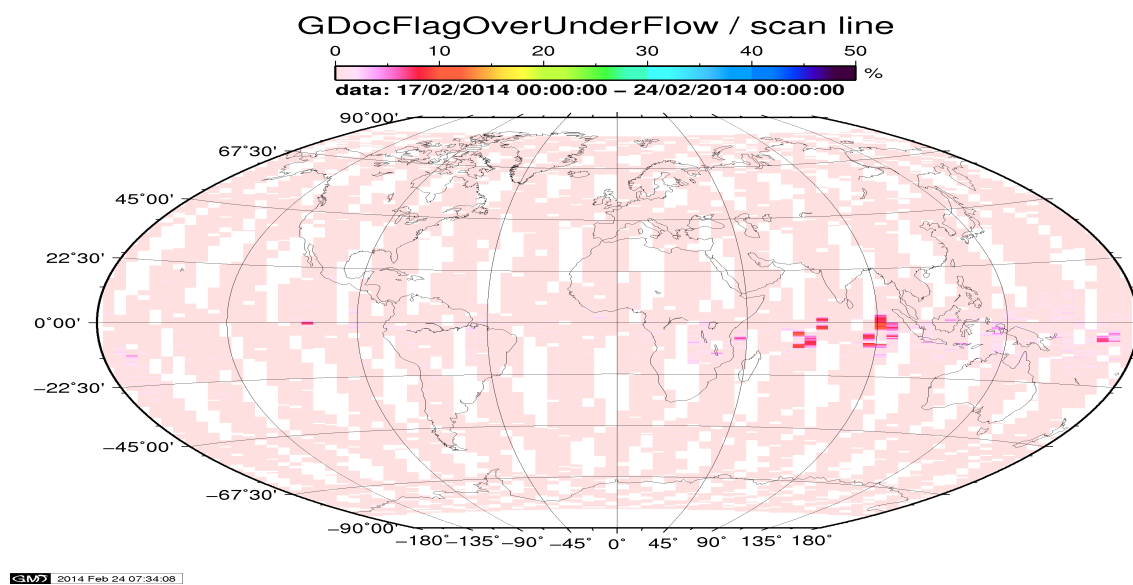


Figure 2: Flag of Over and Under Flows

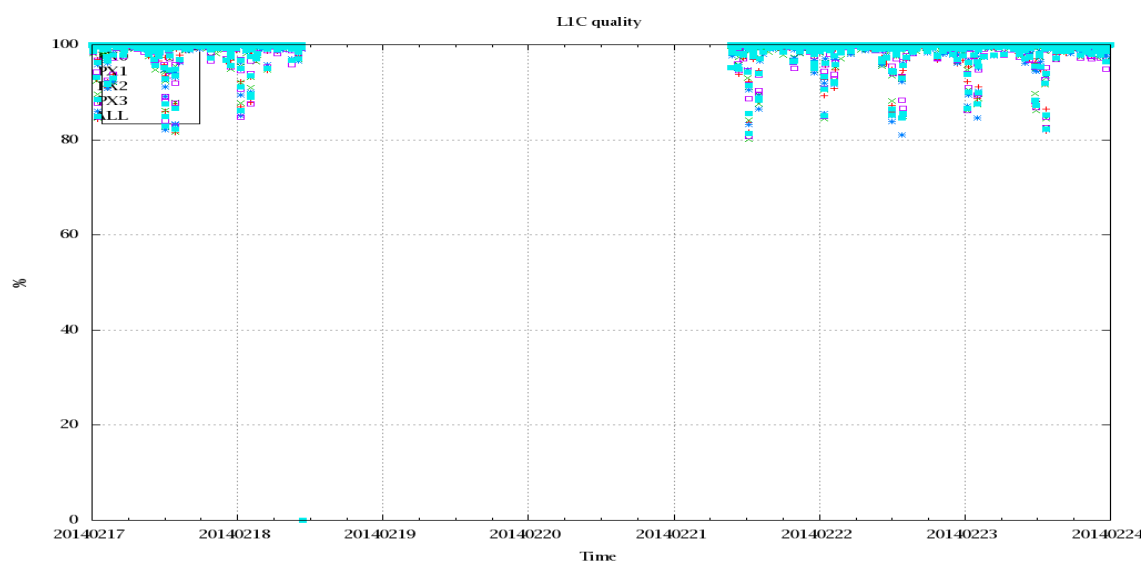


Figure 3: Level 1C quality

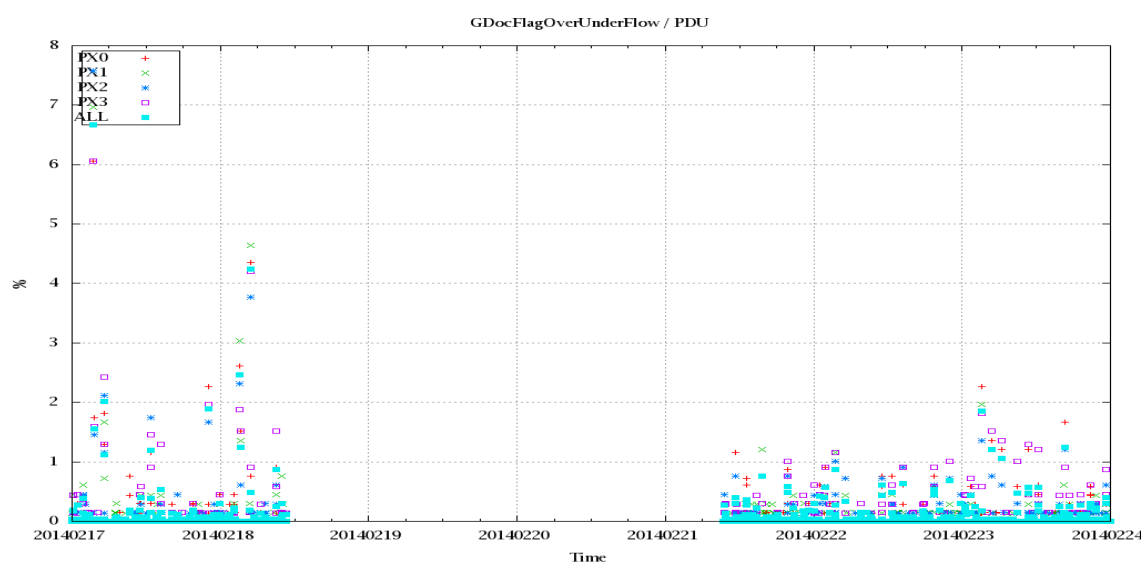


Figure 4: OverUnderFlowFlag timeseries

5 Radiance monitoring based on NWP

The radiance monitoring compares the IASI measurements (L1C-eps-products) obtained under clear sky situation over sea with modeled radiances. Cloud identification is based on cloud flag of co-located AVHRR L1B data in addition to information from the IASI L1C clustering analysis here only homogenous situations are taken into account (99.0 percent in first class). A radiative transfer model (RTM) is feed with co-located ECMWF profiles of T,WV, and Ozon. Between March 2007 and the 18th of May 2010 RTIASI in Version 4.0 is used. After the 18th of May 2010 the RTTOV model in V9.3 is used. Information about the SST is obtained from the AVHRR L1B or taken from AVHRR scenes analysis (CGS only).

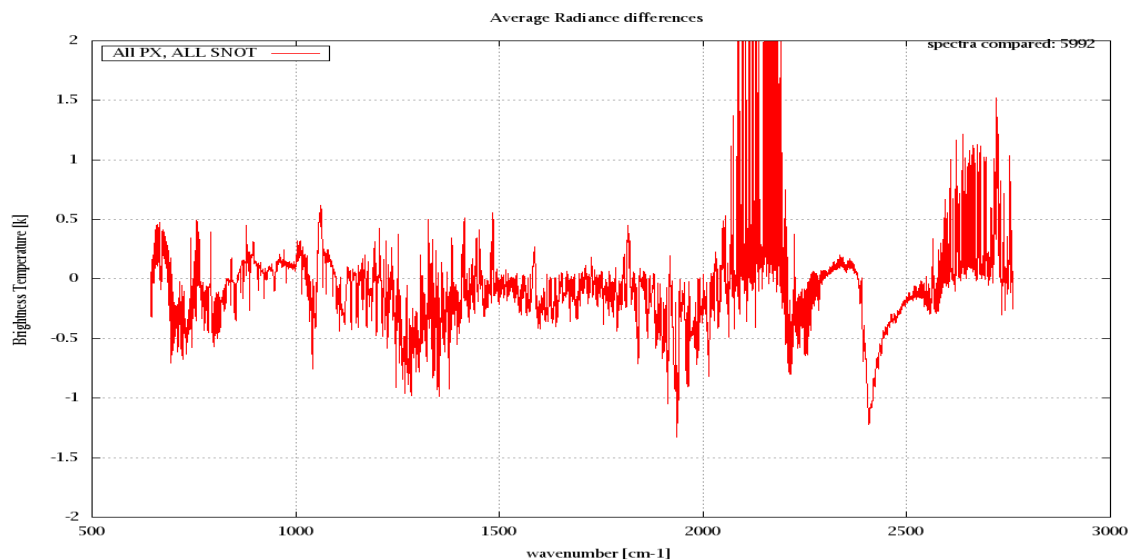


Figure 5: Average radiance differences: OBS-CAL

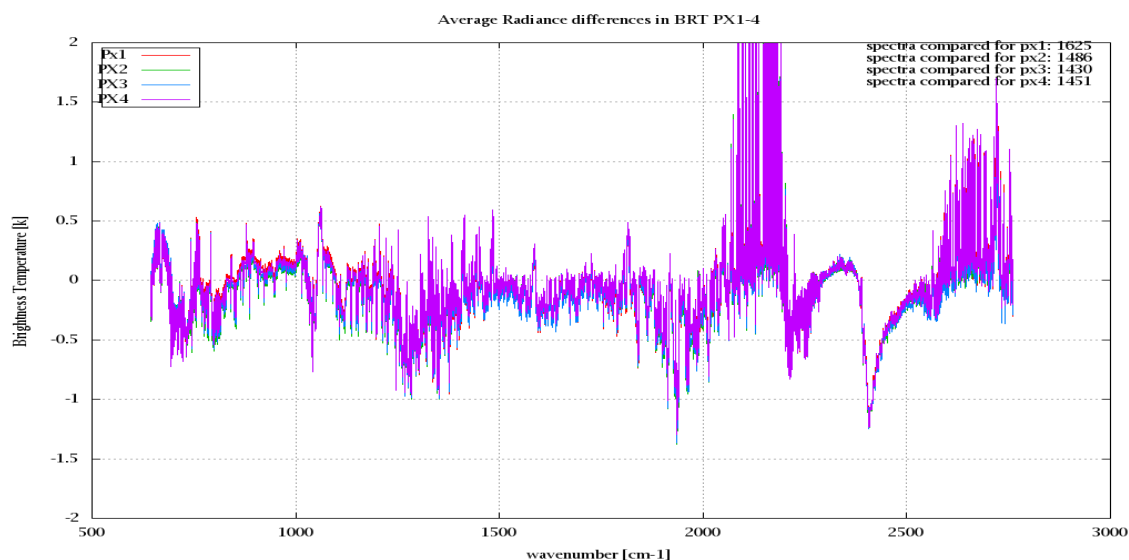


Figure 6: Average radiance differences: OBS-CAL

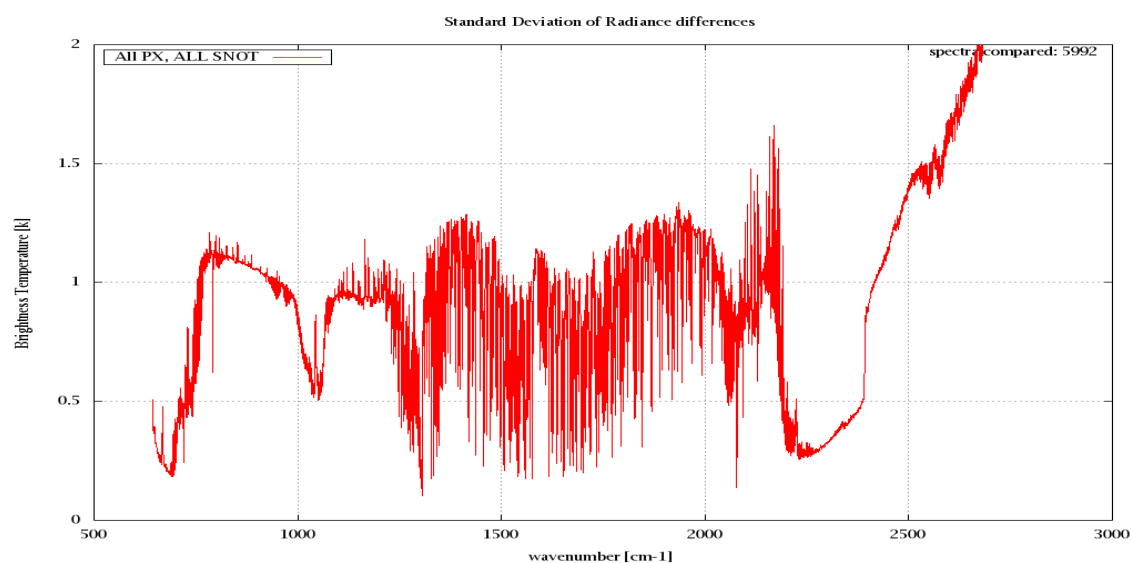


Figure 7: Standard deviation of radiance differences

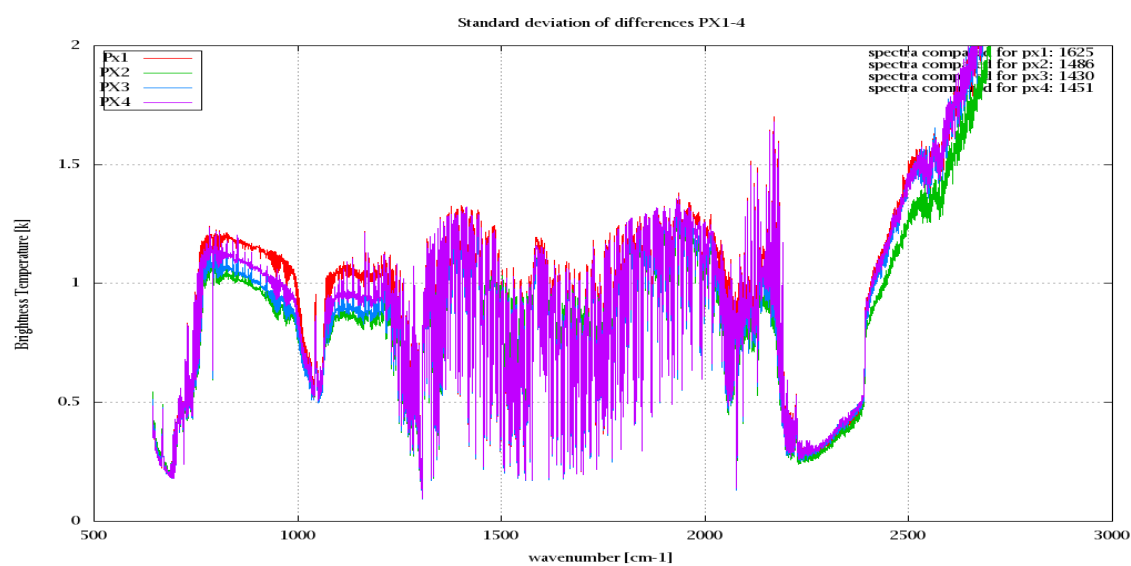


Figure 8: Standard deviation of radiance differences per pixel

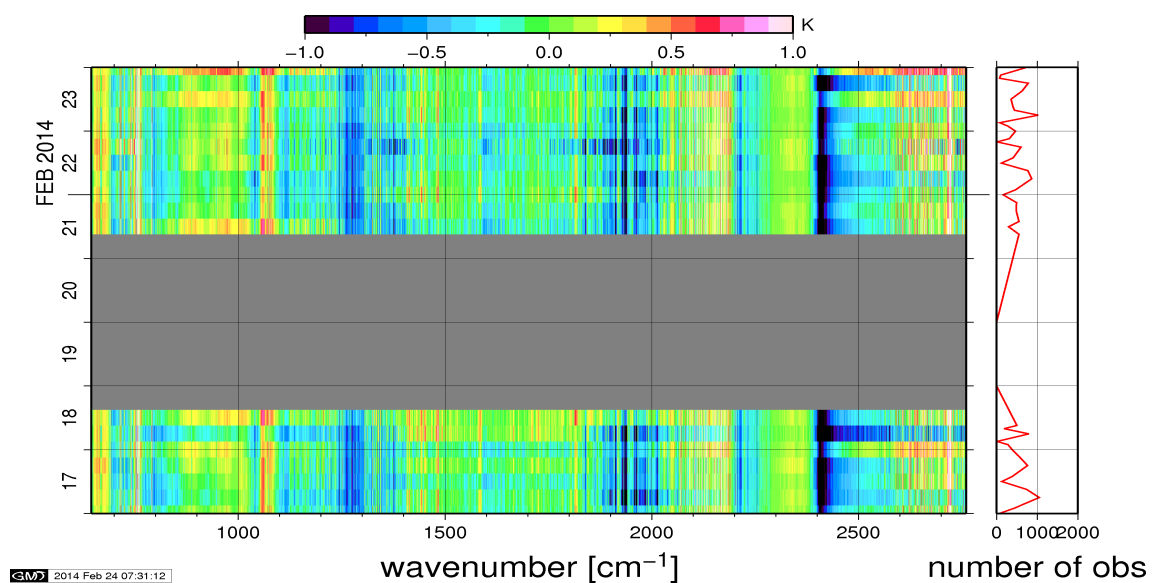


Figure 9: Radiance bias in BRT: All Channels

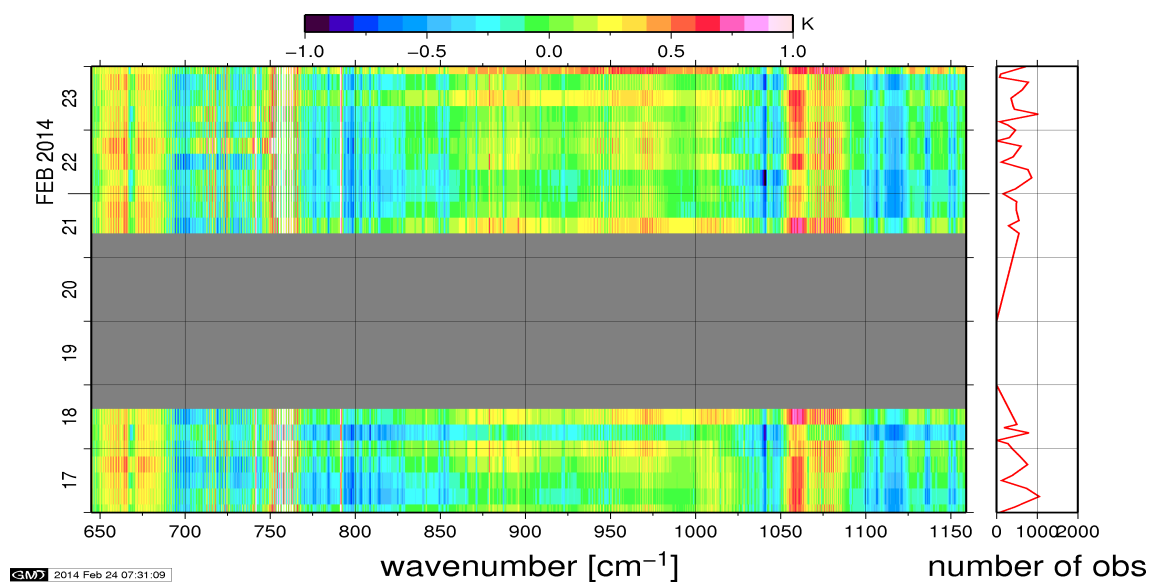


Figure 10: Radiance bias in BRT: IASI Band 1

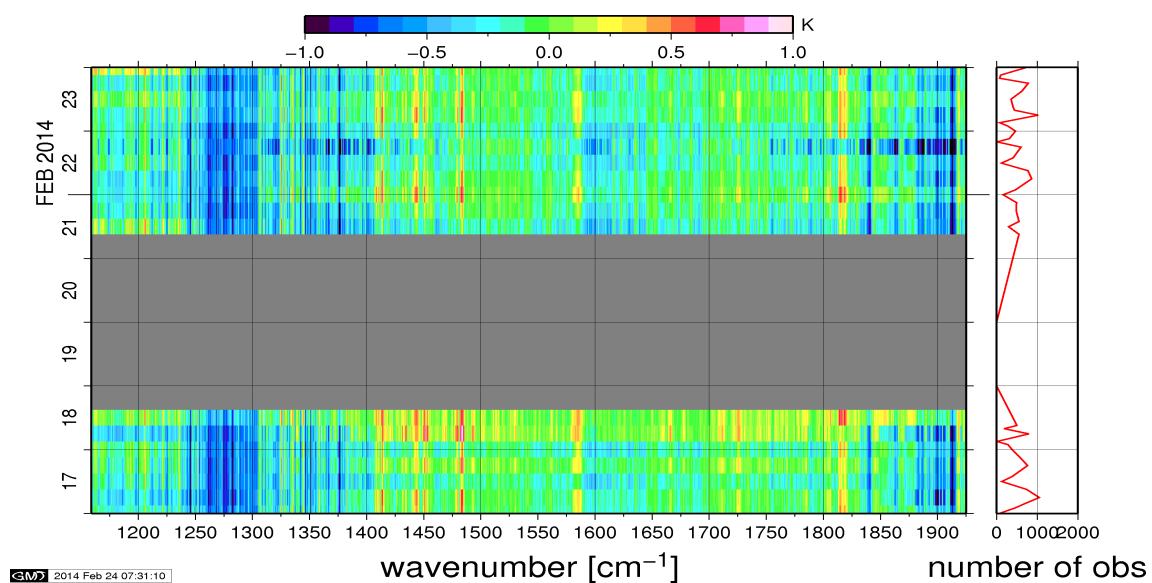


Figure 11: Radiance bias in BRT: IASI Band 2

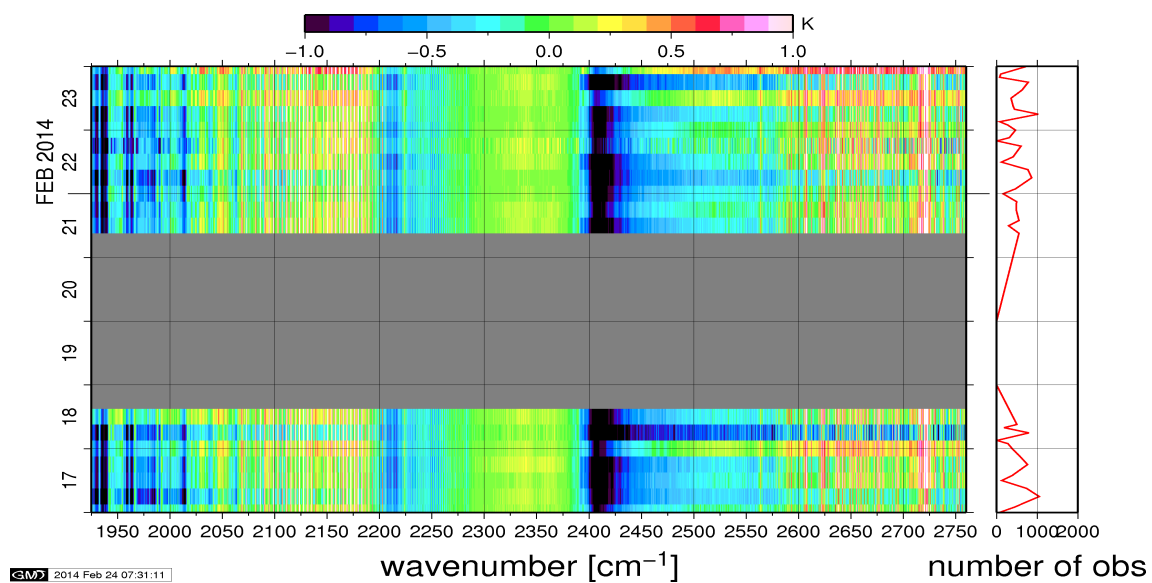


Figure 12: Radiance bias in BRT: IASI Band 3

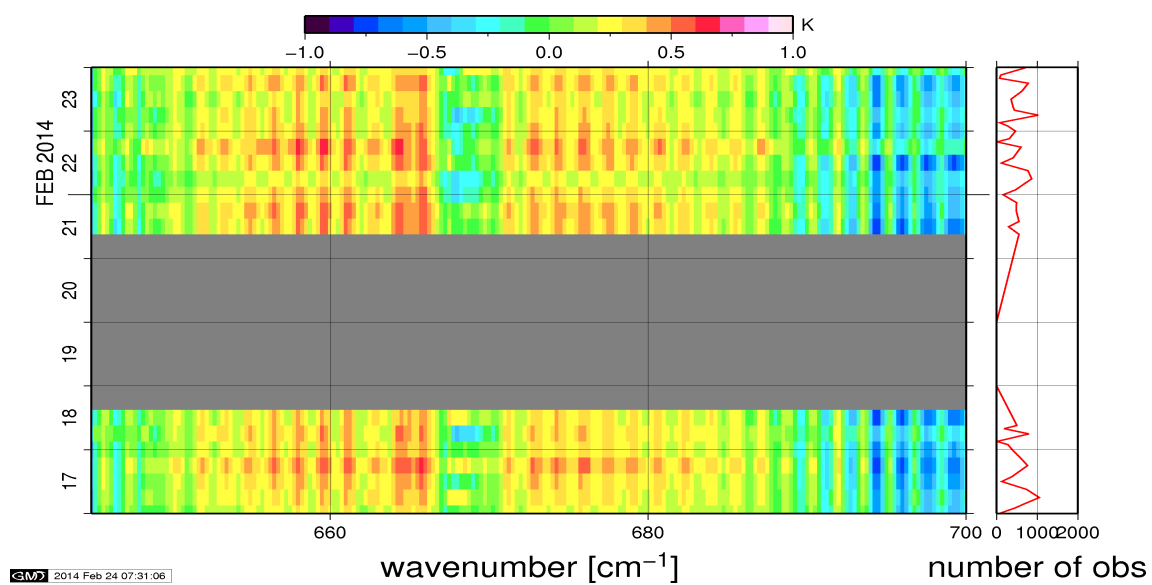


Figure 13: Radiance bias in BRT: CO2 14

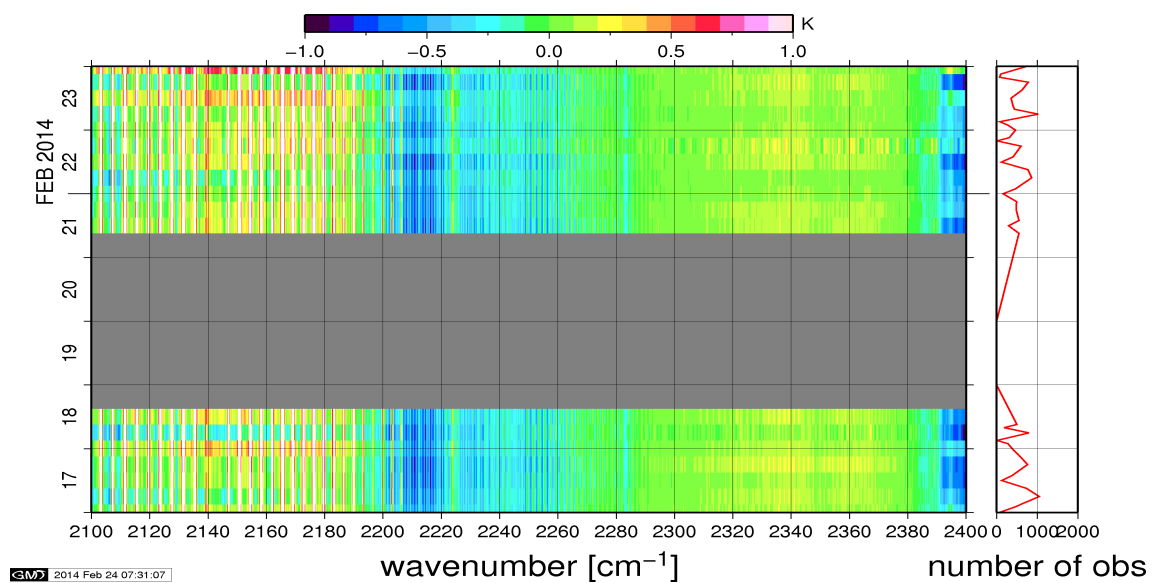


Figure 14: Radiance bias in BRT: CO2 4.3

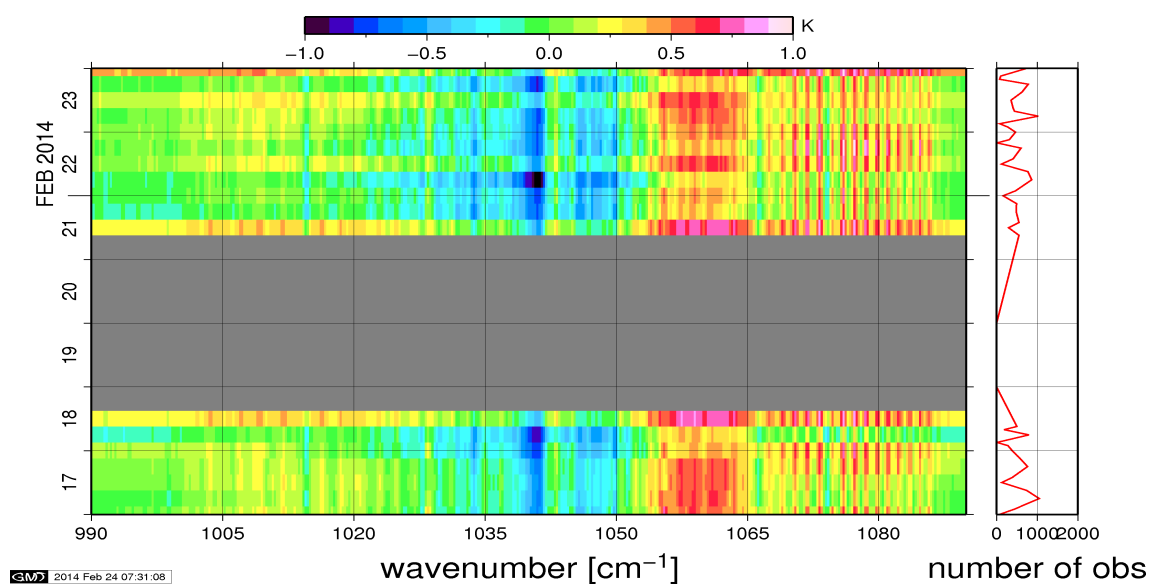


Figure 15: Radiance bias in BRT: O3

6 IASI-HIRS radiance comparison Channel 1-19

The radiance comparison of IASI and HIRS/4 on-board MetOp is performed on all pixel with distances smaller than 3 km between IASI and HIRS. The radiance differences IASI - HIRS are given in brightness temperatures at 280K reference temperature.

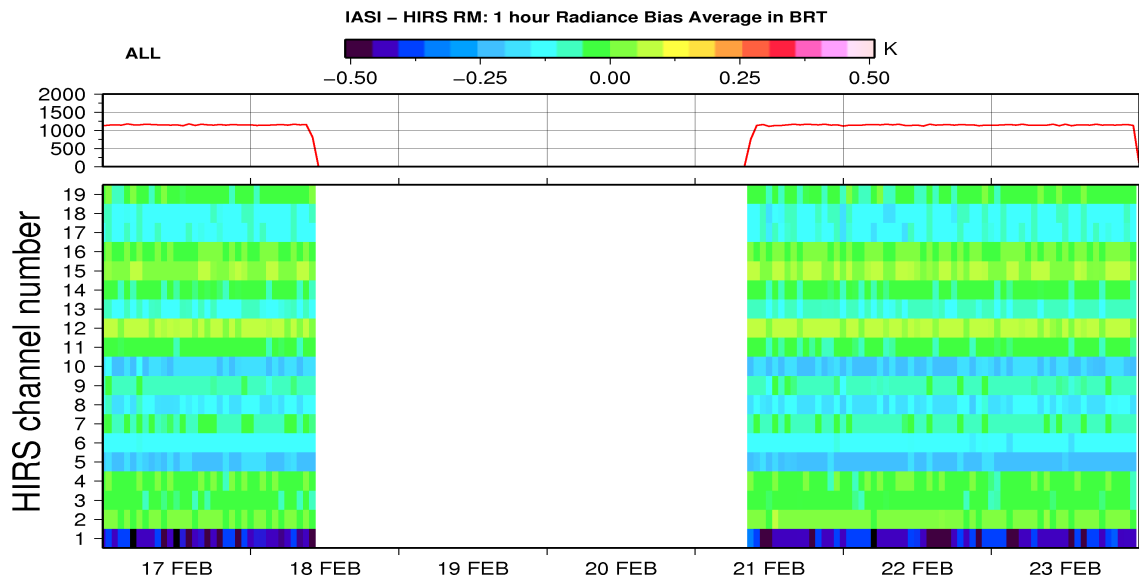


Figure 16: Radiance Differences in BRT 1h Average

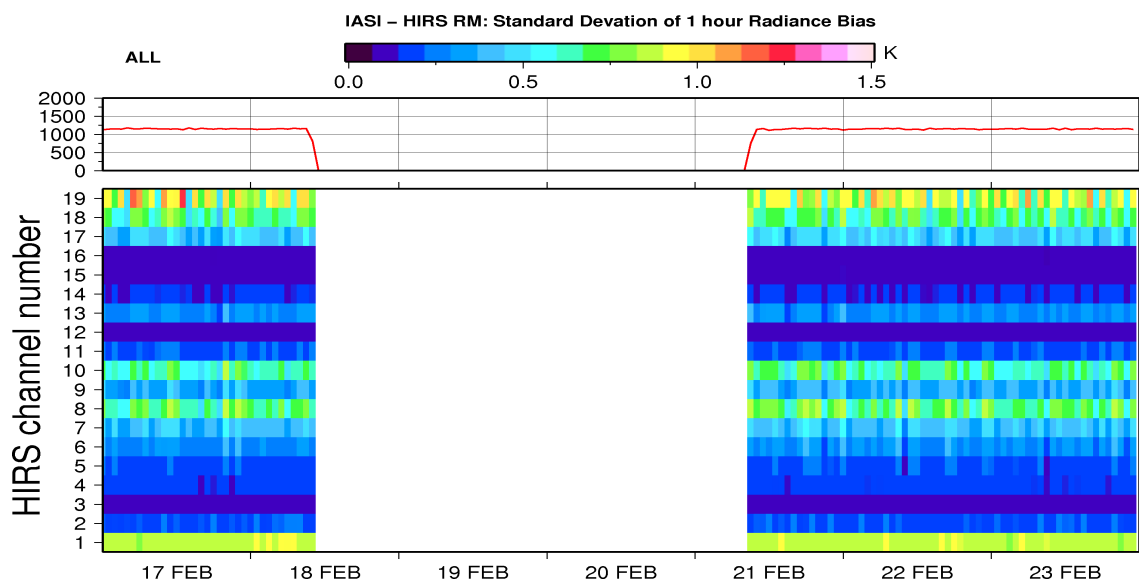


Figure 17: Standard Deviation of Radiance Differences 1h Average

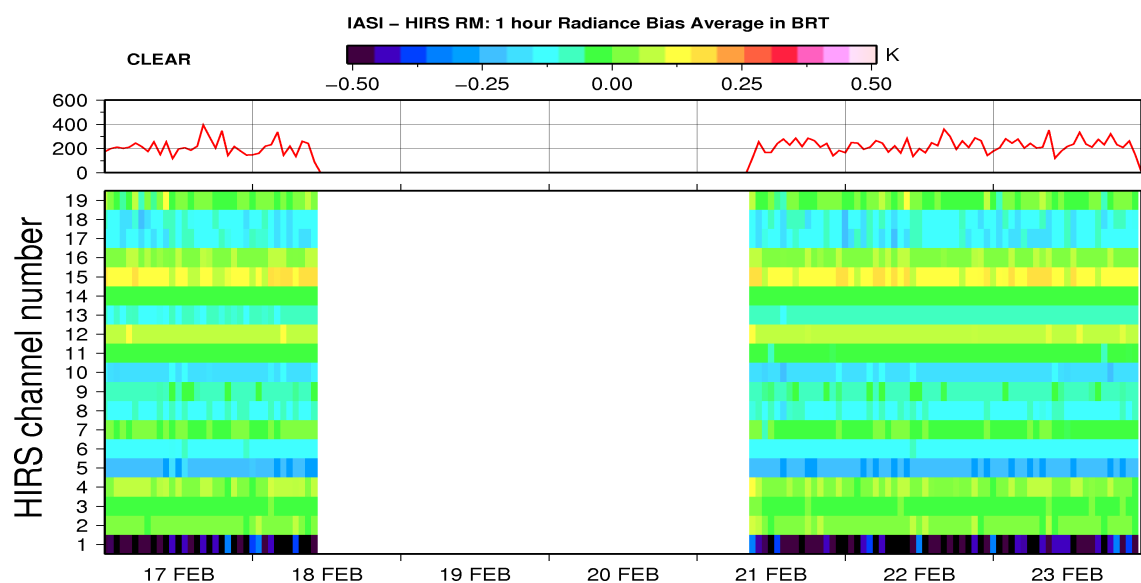


Figure 18: Radiance Differences in BRT 1h Average - Clear Sky

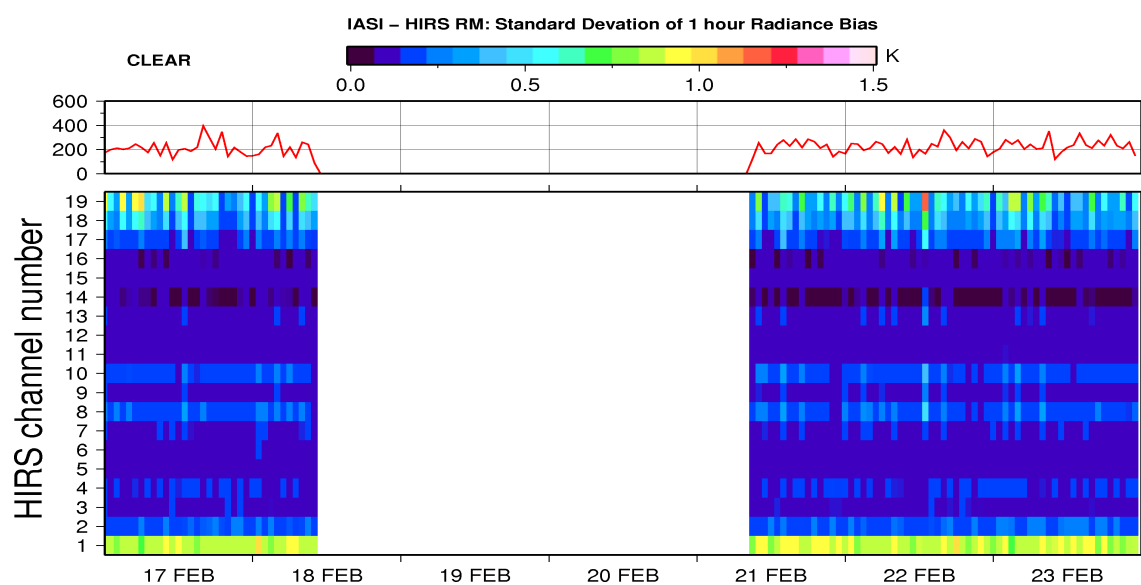


Figure 19: Standard Deviation of Radiance Differences 1h Average - Clear Sky