

IASI L0 and L1 Weekly Monitoring Report

IASI monitoring team

12/04/2010 00:00:00 - 19/04/2010 00:00:00 (Week 15)

1 Introduction

This report provides summary monitoring plots and figures from IASI instrument on the MetOp-A satellite retrieved from the IASI L0 and L1 ENG product (3 minute data packet) for 12/04/2010 00:00:00 - 19/04/2010 00:00:00 .

The monitoring data are extracted on PDU basis.

Data extraction, calibration, processing and statistics are performed at EUMETSAT.

2 Data quantity 12/04/2010 00:00:00 - 19/04/2010 00:00:00

Product Type	Number	Action
L0 HKTM PDUs	3356	-
L0 IASI PDUs	3356	-
L1 ENG PDUs	3353	-
L1 ENG distinct GEPSGranule	3354	-
L1 DPX PDUs (RM: IASI-HIRS)	3302	-
L1 DPS Files (RM: OBS-CAL NWP based)	88	-

Table 1: Data quantity

APID	Packet type	Packets lost
130	PX1	4394
135	PX2	4389
140	PX3	4390
145	PX4	4388
150	IMG	4953
160	VER	727

Table 2: L0 packet losses

3 Instrument modes

Time	Transition from	Transition to
12/04/2010 00:09:00	-	Normal operation
14/04/2010 05:12:44	Normal operation	Auxiliary ASE synchronised
14/04/2010 05:14:36	Auxiliary ASE synchronised	External calibration
14/04/2010 09:08:44	External calibration	Auxiliary ASE synchronised
14/04/2010 09:10:36	Auxiliary ASE synchronised	Normal operation

Table 3: Instrument modes

4 L0 and L1 Data Quality

Day	L0 quality	L1 quality	L0 PDUs	L1 PDUs
12/04/2010	99.34 %	99.33 %	480	480
13/04/2010	99.32 %	99.31 %	480	480
14/04/2010	99.28 %	99.25 %	475	473
15/04/2010	99.28 %	99.27 %	480	480
16/04/2010	99.33 %	99.32 %	480	480
17/04/2010	99.28 %	99.28 %	480	480
18/04/2010	99.30 %	99.29 %	480	480

Table 4: Quality overview

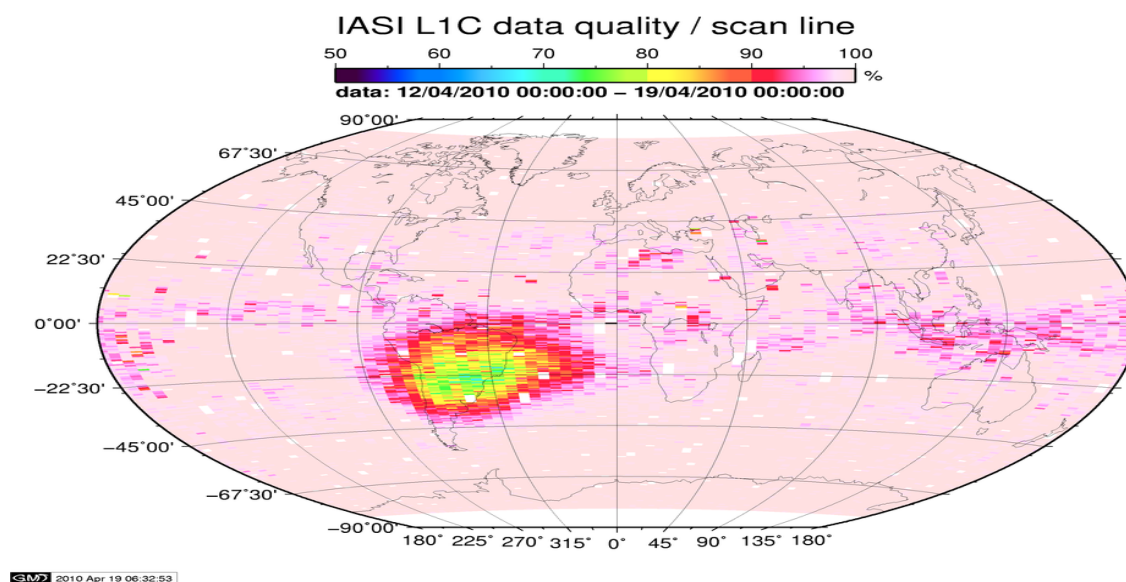


Figure 1: L1C data quality

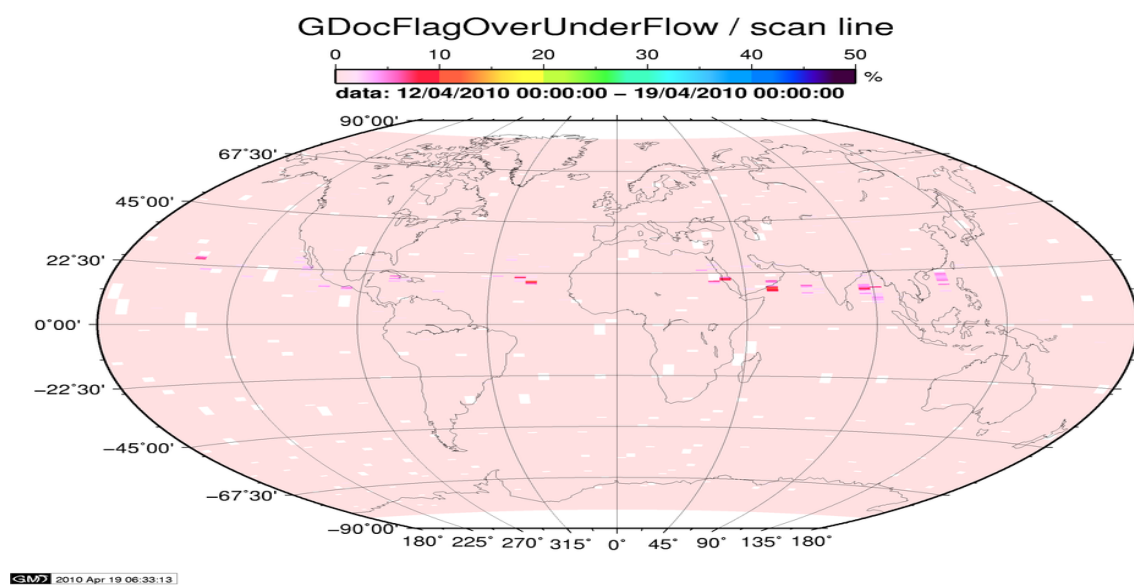


Figure 2: Flag of Over and Under Flows

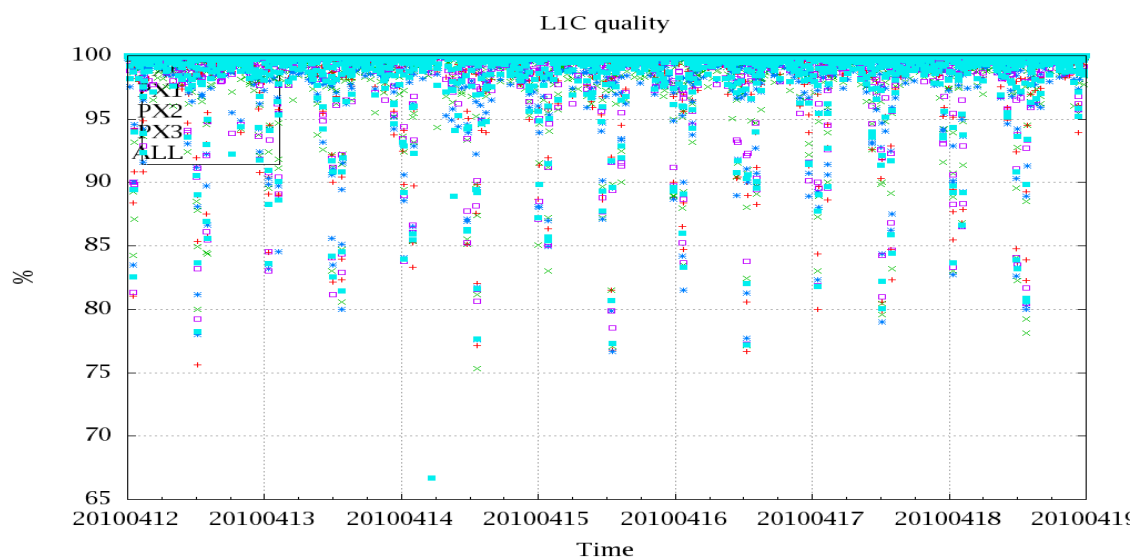


Figure 3: Level 1C quality

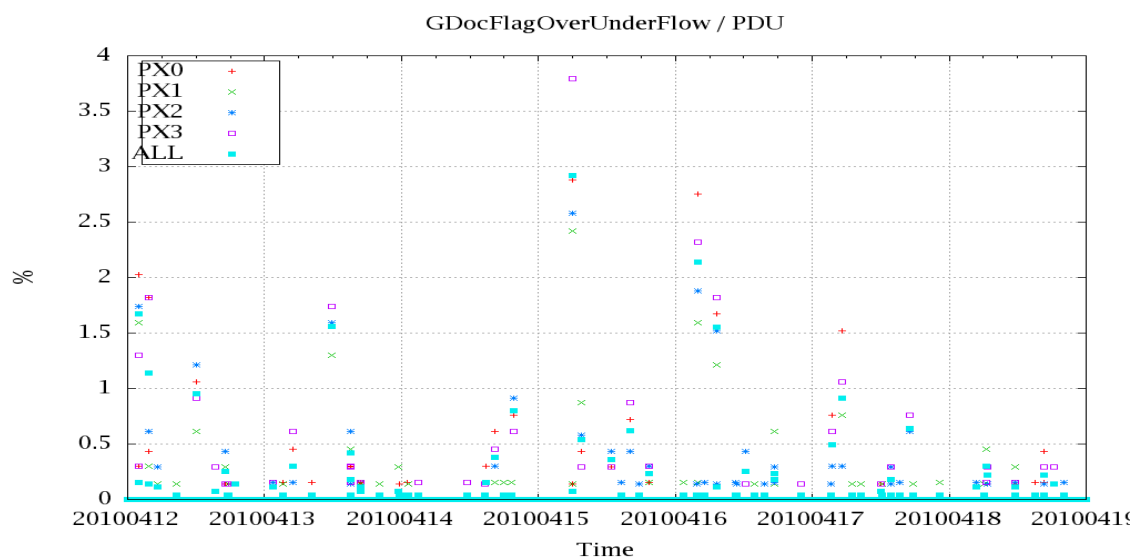


Figure 4: OverUnderFlowFlag timeseries

5 Radiance monitoring based on NWP

The radiance monitoring compares the IASI measurements (L1C-eps-products) obtained under clear sky situation over sea with modeled radiances. Cloud identification is based on cloud flag of co-located AVHRR L1B data in addition to information from the IASI L1C clustering analysis here only homogenous situations are taken into account (99.0 percent in first class). The RTIASI radiative transfer model is feed with co-located ECMWF profiles of T,WV, and Ozon. Information about the SST is obtained from the AVHRR L1B or taken from AVHRR scenes analysis (CGS only).

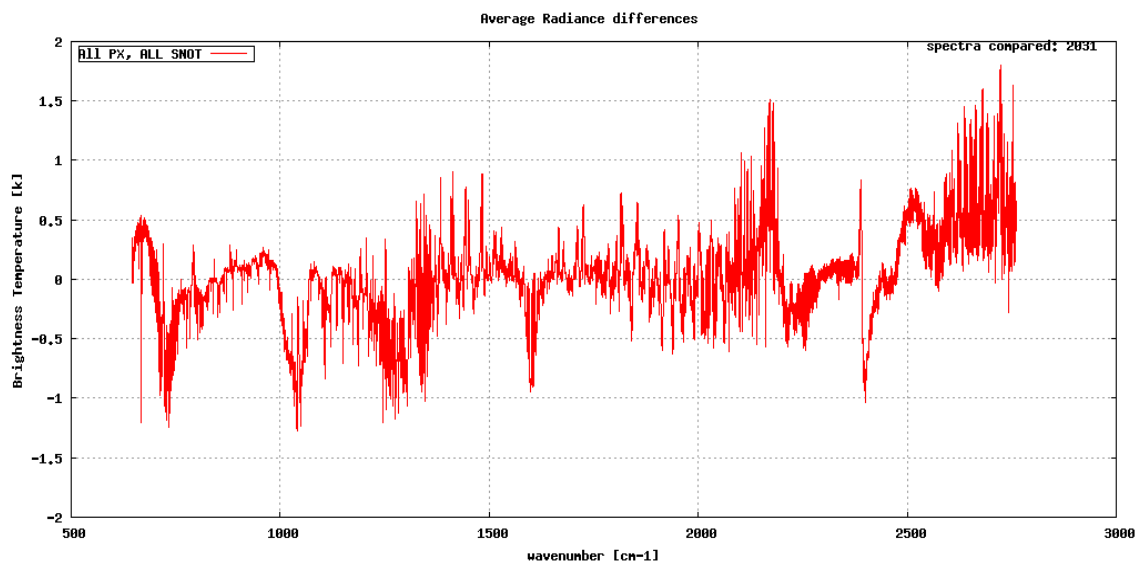


Figure 5: Average radiance differences: OBS-CAL

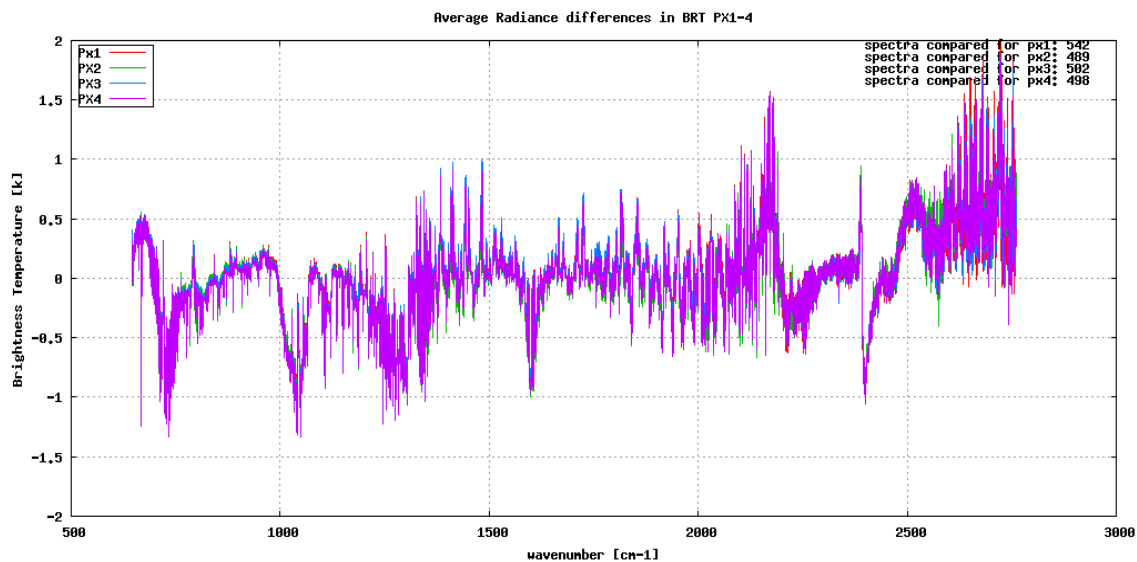


Figure 6: Average radiance differences: OBS-CAL

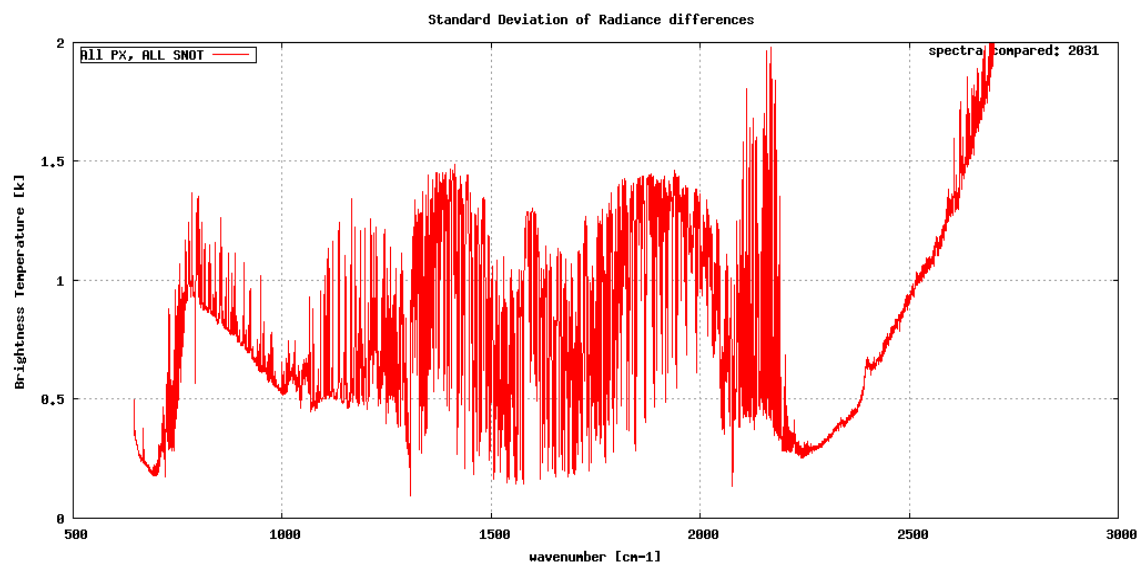


Figure 7: Standard deviation of radiance differences

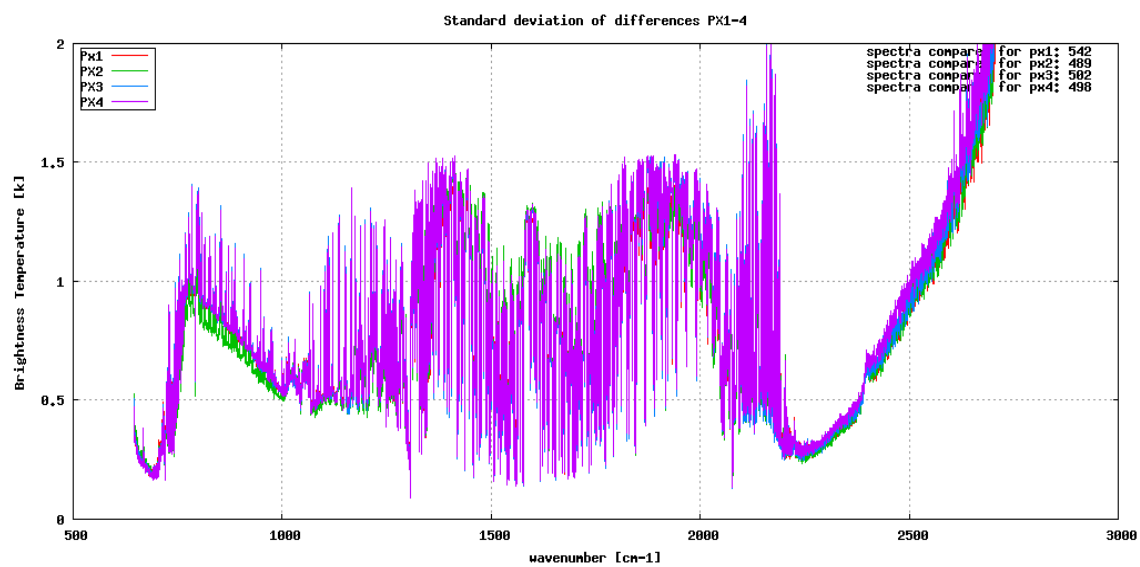


Figure 8: Standard deviation of radiance differences per pixel

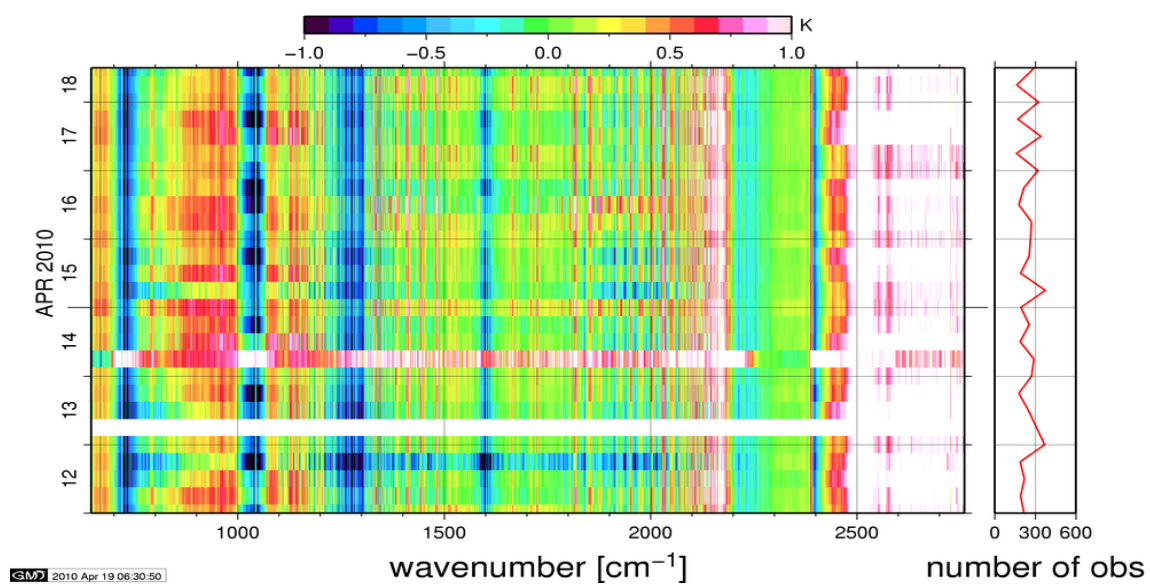


Figure 9: All Channels

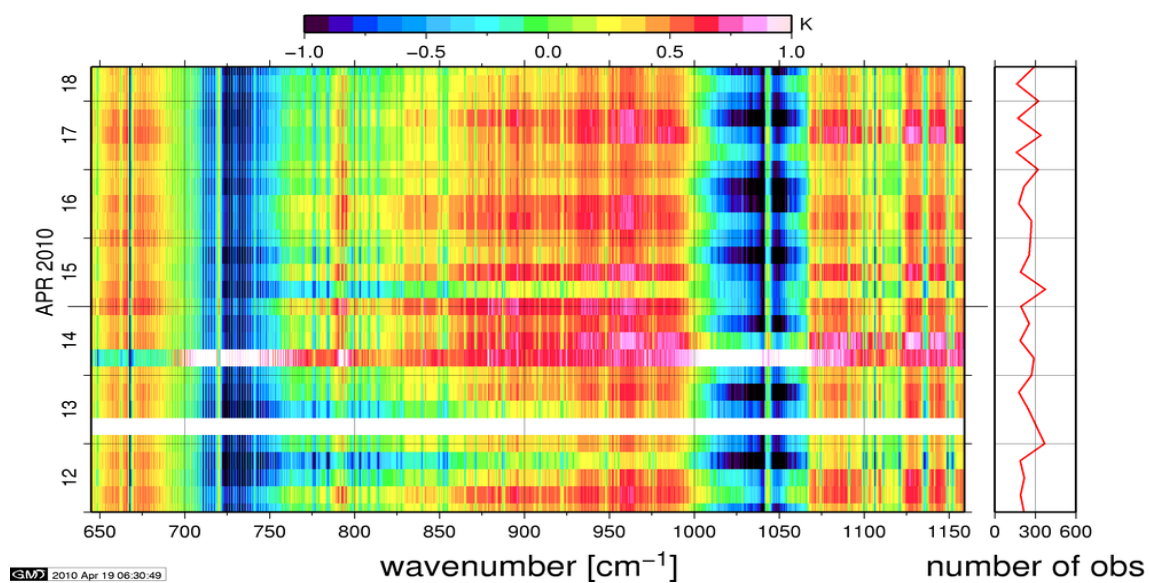


Figure 10: B1

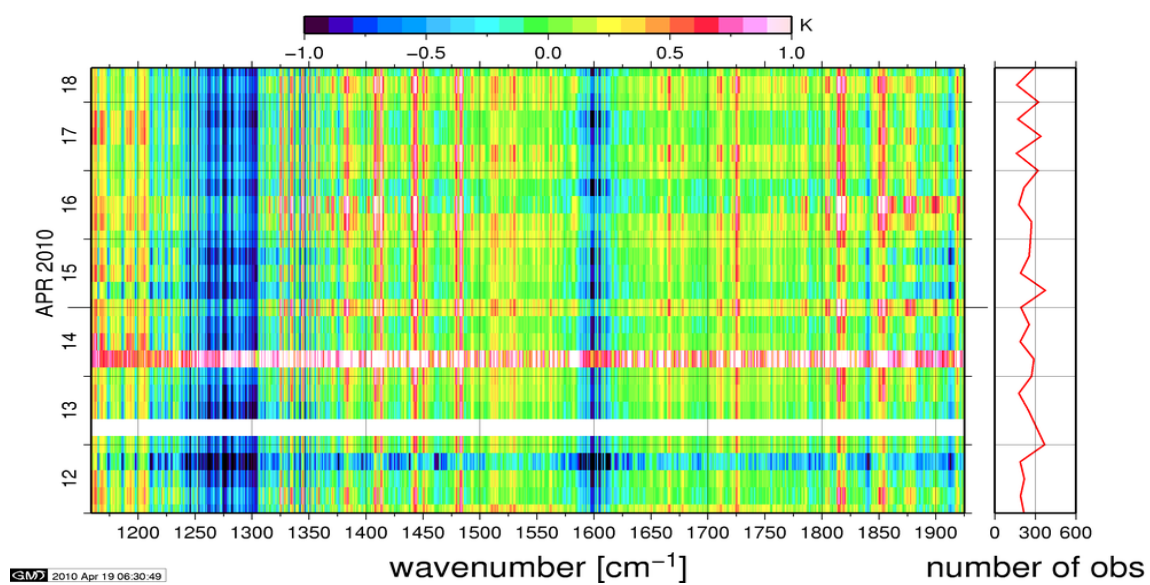


Figure 11: B2

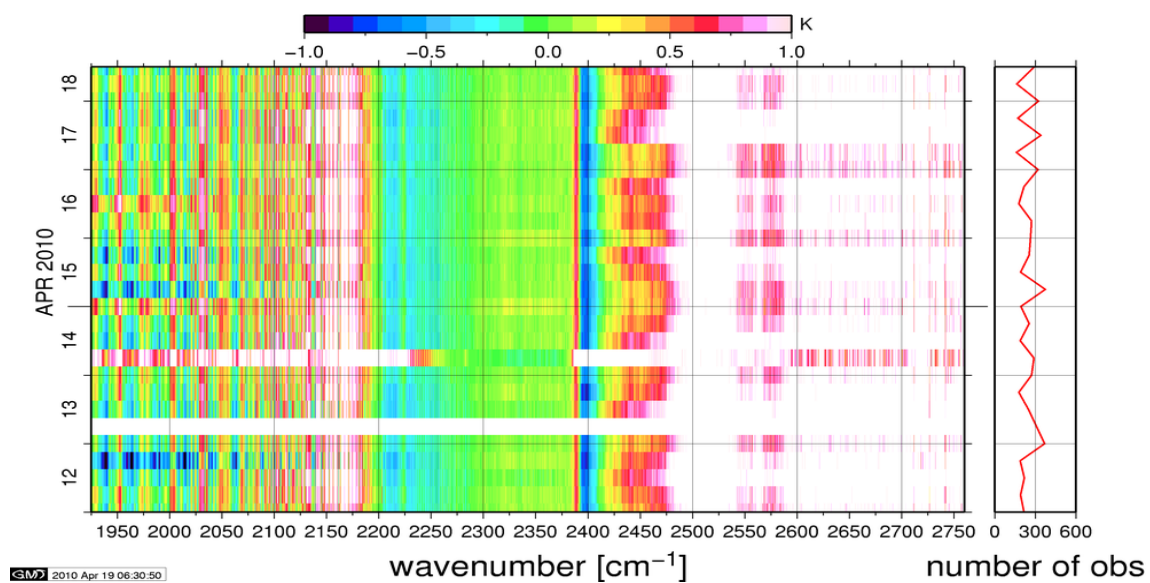


Figure 12: B3

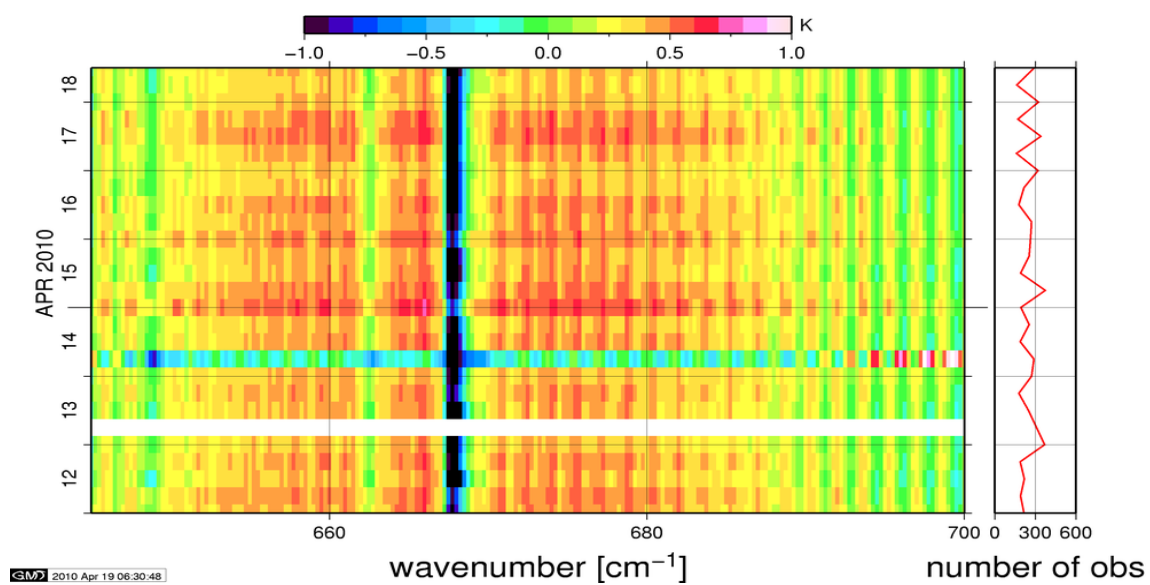


Figure 13: CO2

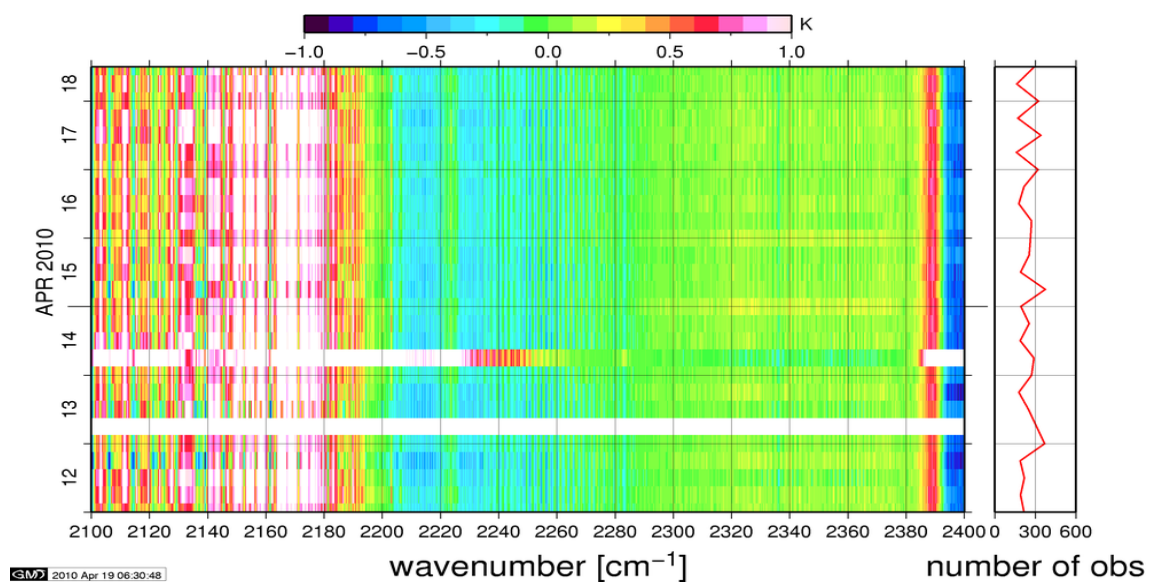


Figure 14: CO2

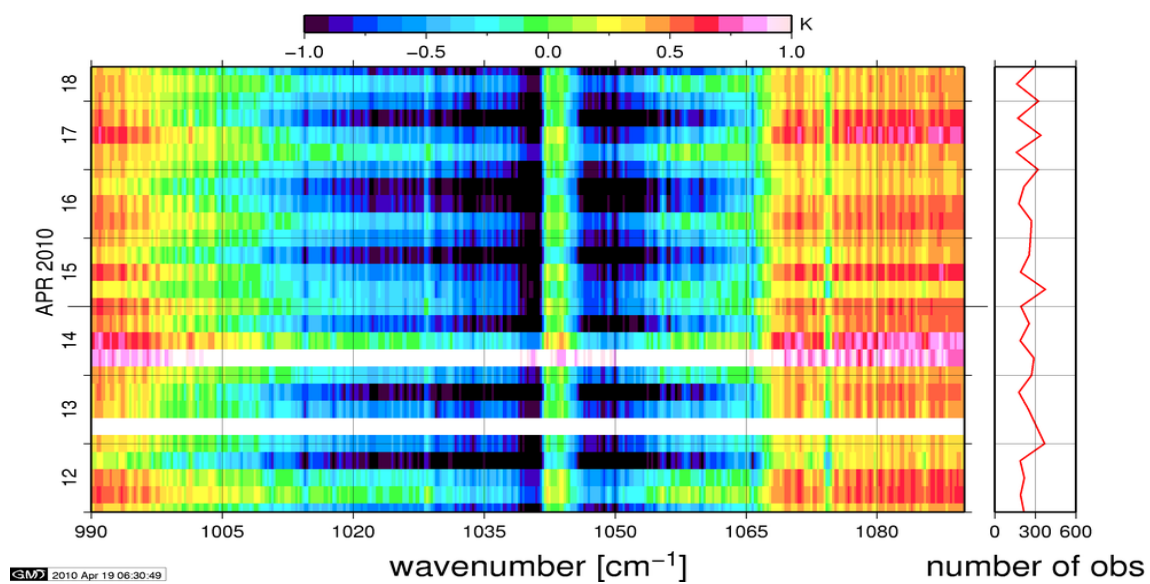


Figure 15: O3

6 IASI-HIRS radiance comparison Channel 1-19

The radiance comparison of IASI and HIRS/4 on-board MetOp is performed on all pixel with distances smaller than 3 km between IASI and HIRS. The radiance differences IASI - HIRS are given in brightness temperatures at 280K reference temperature.

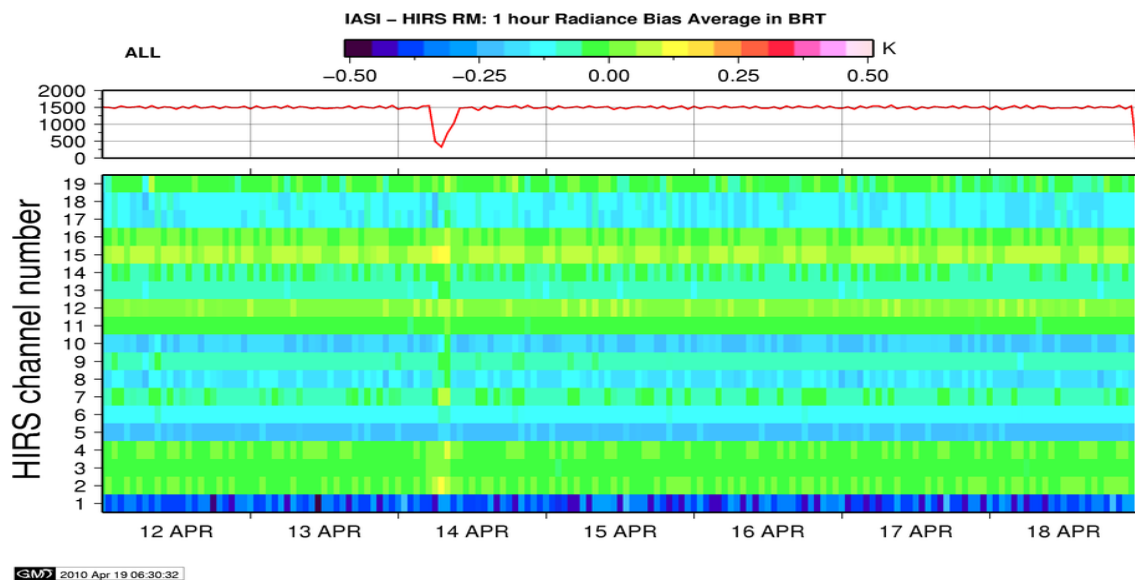


Figure 16: Radiance Differences in BRT 1h Average

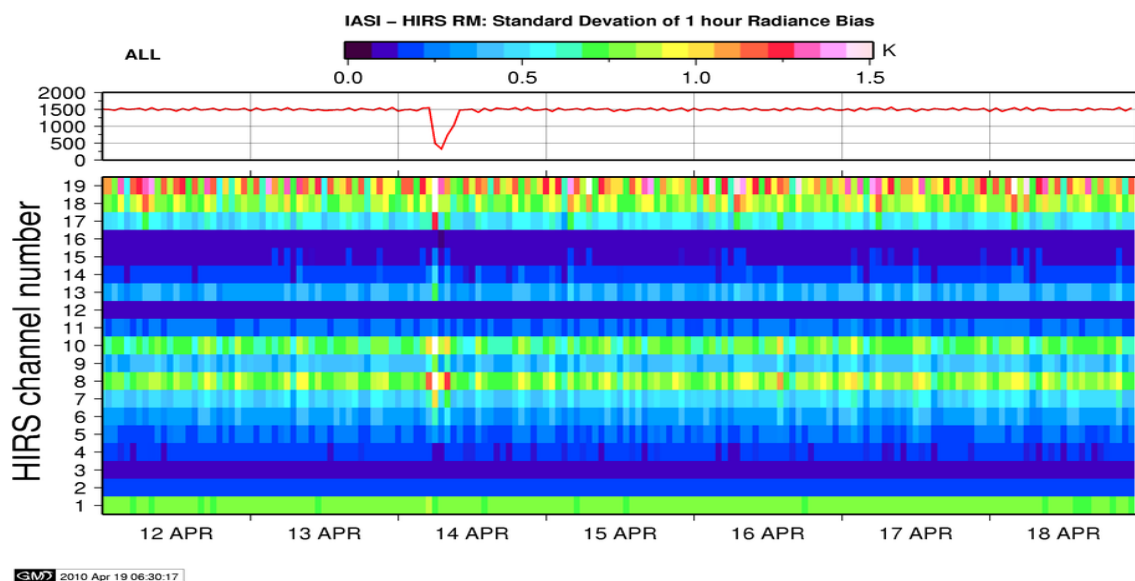


Figure 17: Standard Deviation of Radiance Differences 1h Average

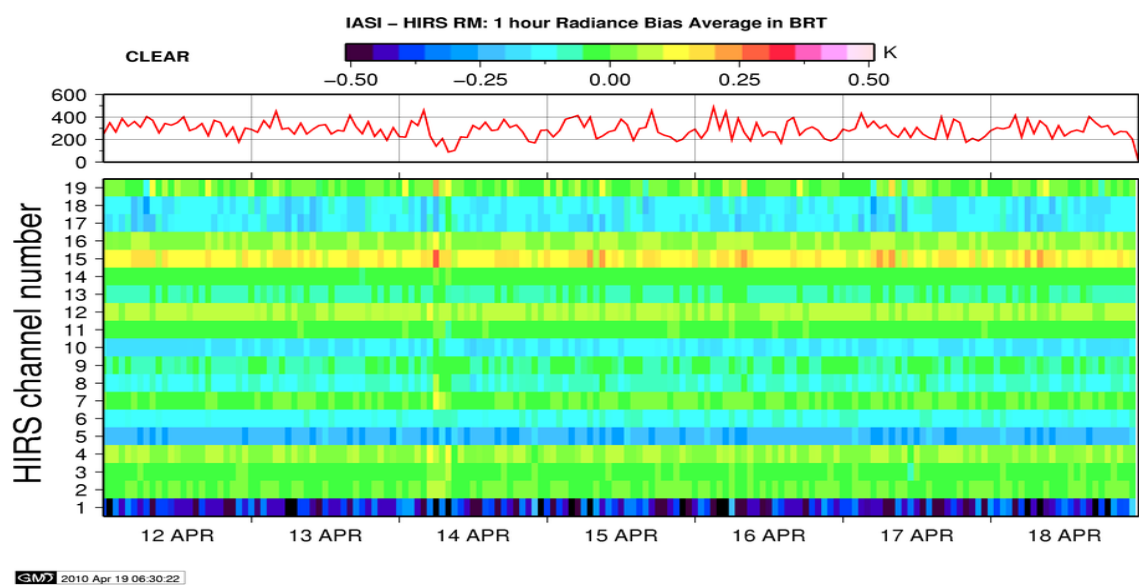


Figure 18: Radiance Differences in BRT 1h Average - Clear Sky

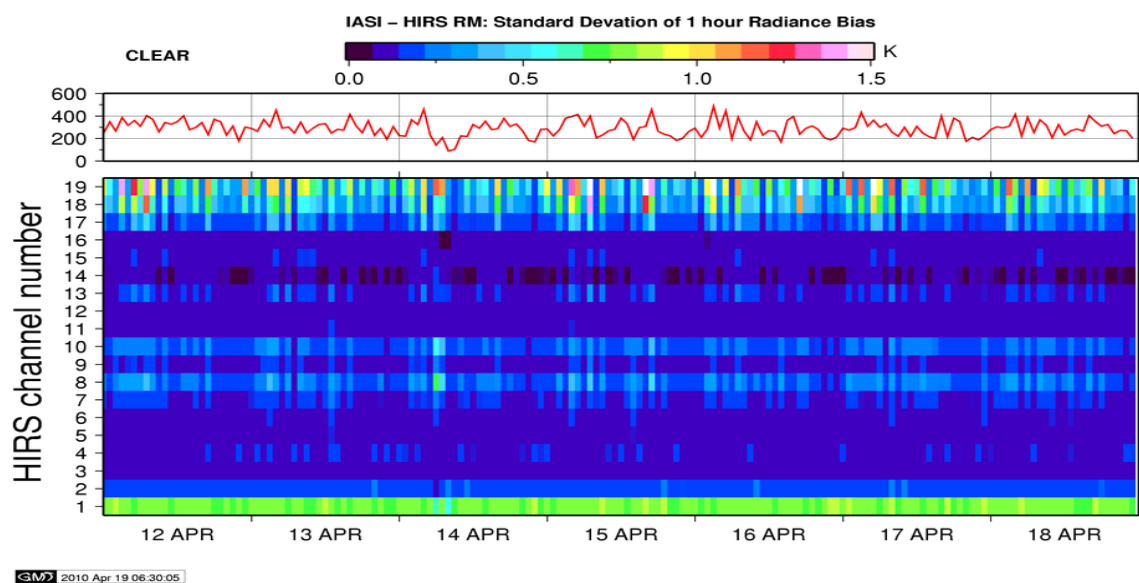


Figure 19: Standard Deviation of Radiance Differences 1h Average - Clear Sky