

IASI L0 and L1 Daily Monitoring Report **Metop-C**

IASI monitoring team

28/08/2023 00:00:00 - 29/08/2023 00:00:00

1 Introduction

This report provides summary monitoring plots and figures from IASI instrument on the Metop-C satellite retrieved from the IASI L0 and L1 ENG product (3 minutes data packet) for 28/08/2023 00:00:00 - 29/08/2023 00:00:00 .

The monitoring data are extracted on PDU basis.

2 Data quantity 28/08/2023 00:00:00 - 29/08/2023 00:00:00

Product Type	Number	Action
L0 HKTM PDUs	445	e
L0 IASI PDUs	446	e
L1 ENG PDUs	444	e
L1 ENG distinct GEPSGranule	445	a
L1 DPX PDUs (RM: IASI-HIRS)	0	e
L1 DPS Files (RM: OBS-CAL NWP based)	444	-

Table 1: Data quantity

APID	Seq from	Seq to	Time from	Time to
PX1 (130)	14884	5767	20230828083852.189	20230828102400.098
PX2 (135)	14883	5767	20230828083851.970	20230828102400.098
PX3 (140)	14883	5767	20230828083851.970	20230828102400.098
PX4 (145)	14883	5767	20230828083851.970	20230828102400.098
IMG (150)	1863	12287	20230828083851.970	20230828102400.098
VER (160)	16380	0	20230828030749.093	20230828030757.093
VER (160)	1	16381	20230828030757.093	20230828030757.093
VER (160)	-1	2	20230828030757.093	20230828030805.093
VER (160)	12406	16352	20230828083845.052	20230828102405.075
VER (160)	16381	0	20230828102445.071	20230828102453.071
VER (160)	2	16382	20230828102453.071	20230828102453.071
VER (160)	-1	3	20230828102453.071	20230828102501.071
VER (160)	16382	0	20230828174141.013	20230828174149.013
VER (160)	3	16383	20230828174149.013	20230828174149.013
VER (160)	-1	4	20230828174149.013	20230828174157.013
AUX (180)	9032	9822	20230828083845.486	20230828102405.504

Table 2: L0 data gaps

3 Instrument modes

Time	Transition from	Transition to
28/08/2023 00:00:07	-	Normal operation

Table 3: Instrument modes

4 L0 and L1 Data Quality

Flag	Value	Action
L0 IASI PDUs	446	e
L1 ENG PDUs	444	e
L1 ENG distinct GEPSGranule	445	a
GQisFlagQual set (PX1)	99.58 %	-
GQisFlagQual set (PX2)	99.61 %	-
GQisFlagQual set (PX3)	99.65 %	-
GQisFlagQual set (PX4)	99.57 %	-
GQisFlagQual set (all)	99.60 %	-

Table 4: Quality flags

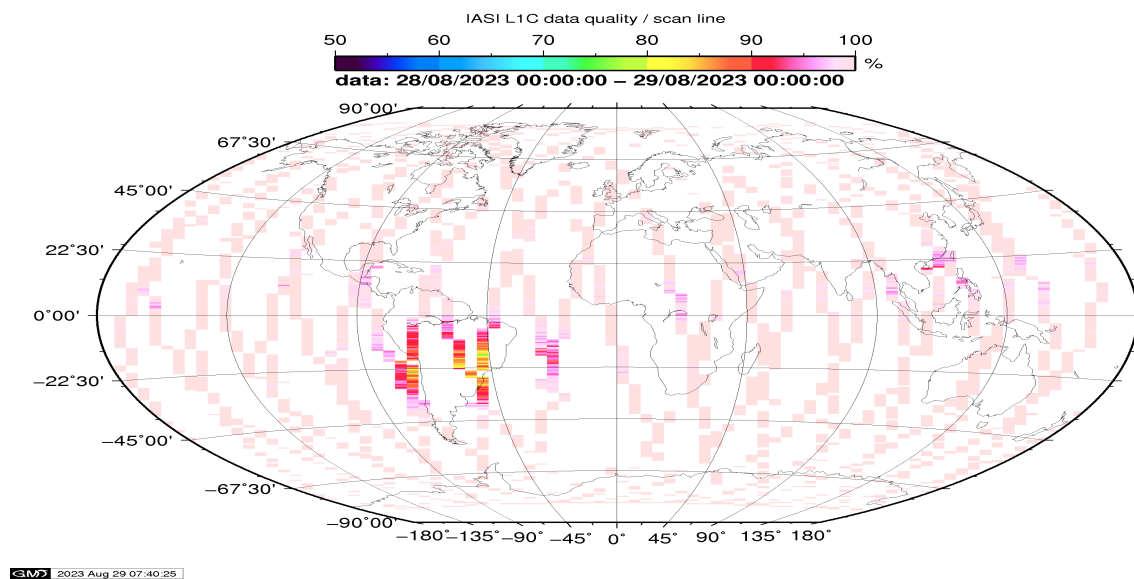


Figure 1: L1C data quality

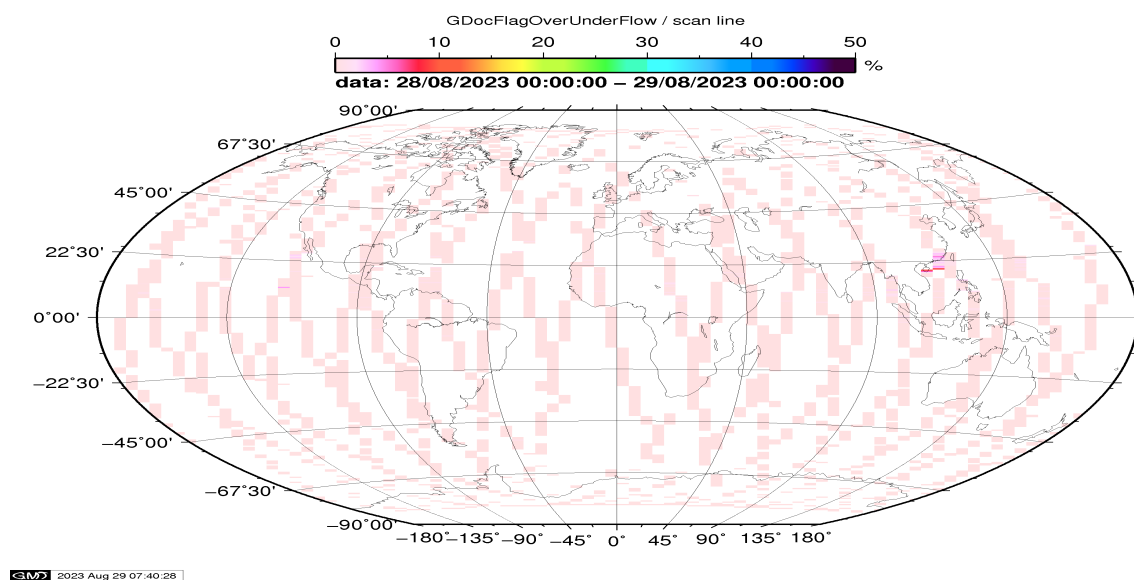


Figure 2: Flag of Over and Under Flows

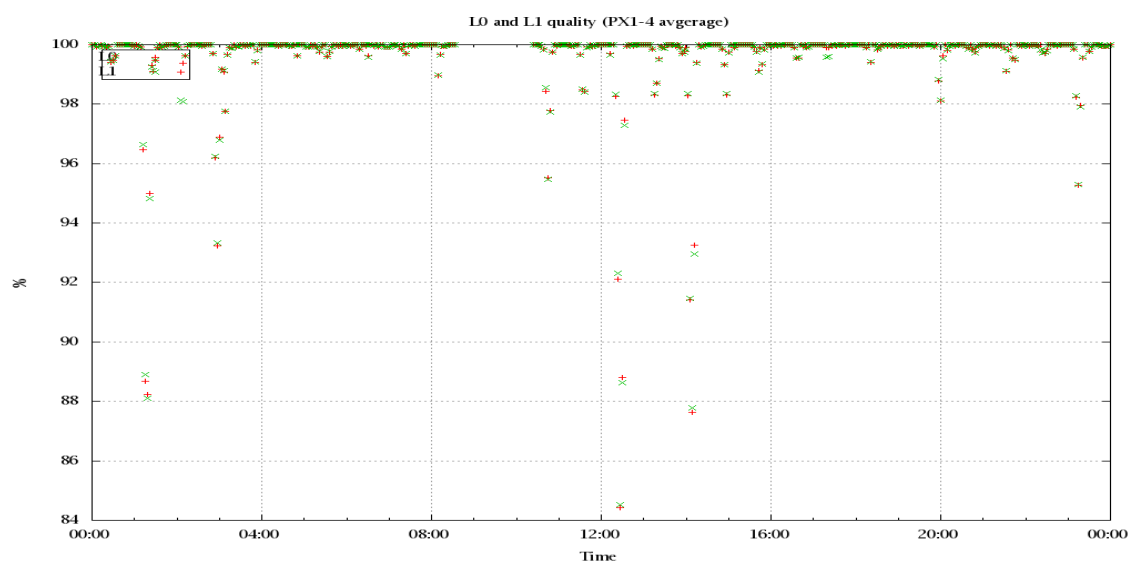


Figure 3: Level 0 and 1C overall quality

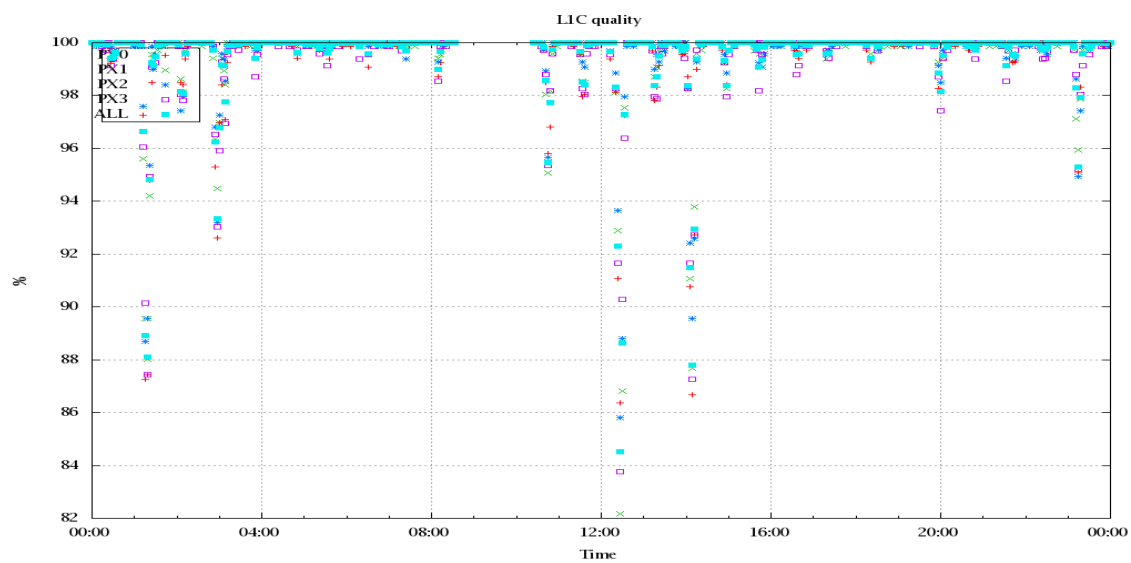


Figure 4: Level 1C quality

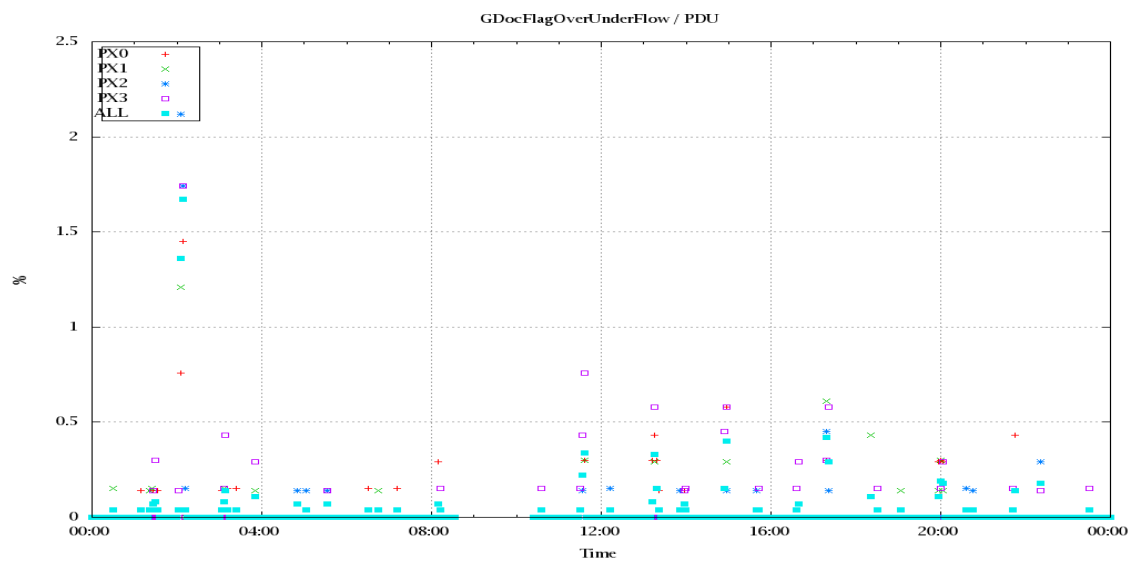


Figure 5: Timeseries of flag of Over and Under Flows

5 Radiance monitoring based on NWP

The radiance monitoring compares the IASI measurements (L1C-eps-products) obtained under clear sky situation over sea with modeled radiances. Cloud identification is based on cloud flag of co-located AVHRR L1B data in addition to information from the IASI L1C clustering analysis here only homogenous situations are taken into account (99.0 percent in first class).

A radiative transfer model (RTM) is feed with co-located ECMWF profiles of T, water vapor and Ozone. Between March 2007 and the 18th of May 2010 RTIASI in Version 4.0 is used. After that date the RTTOV model in V9.3 is used.

Information about the SST is obtained from the AVHRR L1B or taken from AVHRR scenes analysis (CGS only). In the following figures 28 to 34, the so-called radiance anomaly is shown. The radiance anomaly is defined as the difference between the quarter daily radiance average OBS-CAL (over all pixels and scan positions 10 to 20) and the average bias OBS-CAL (over all pixels and scan positions 10 to 20) of the last 30 days.

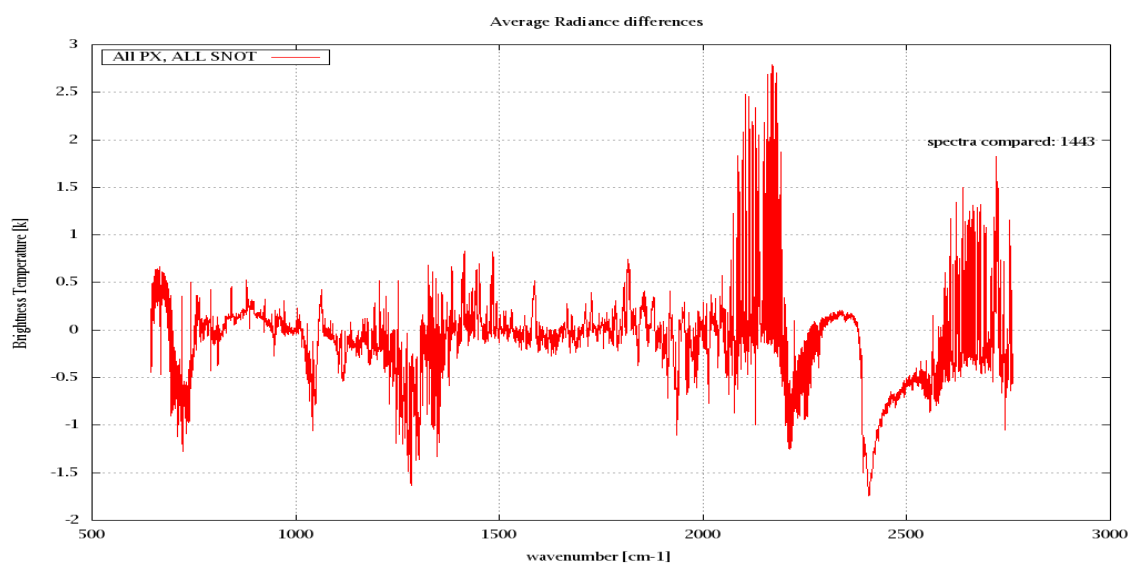


Figure 6: Average Radiance differences: OBS-CAL

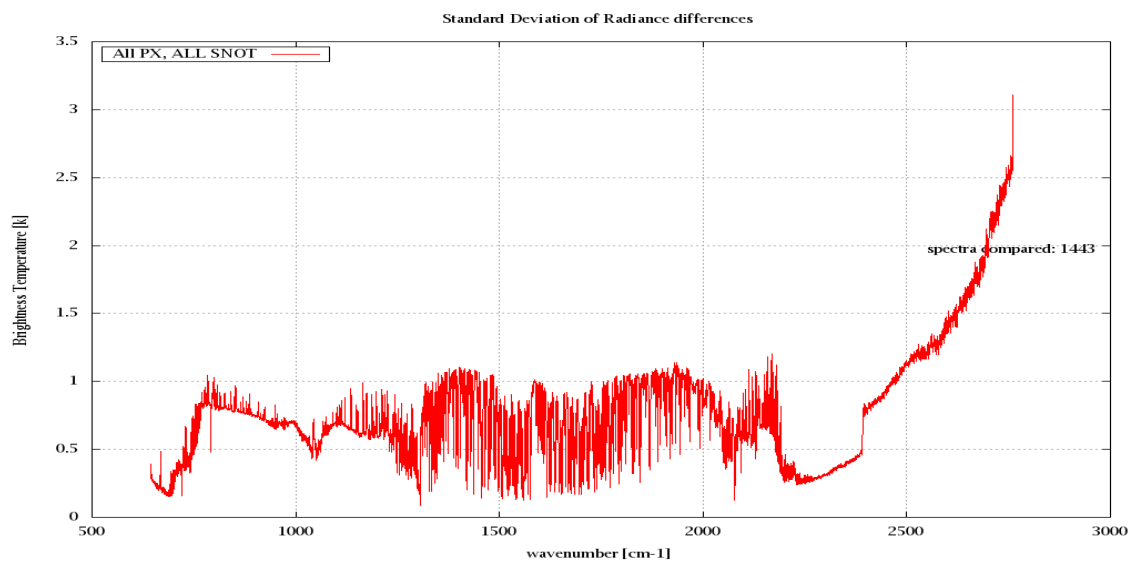


Figure 7: Standard Deviation of Radiance differences

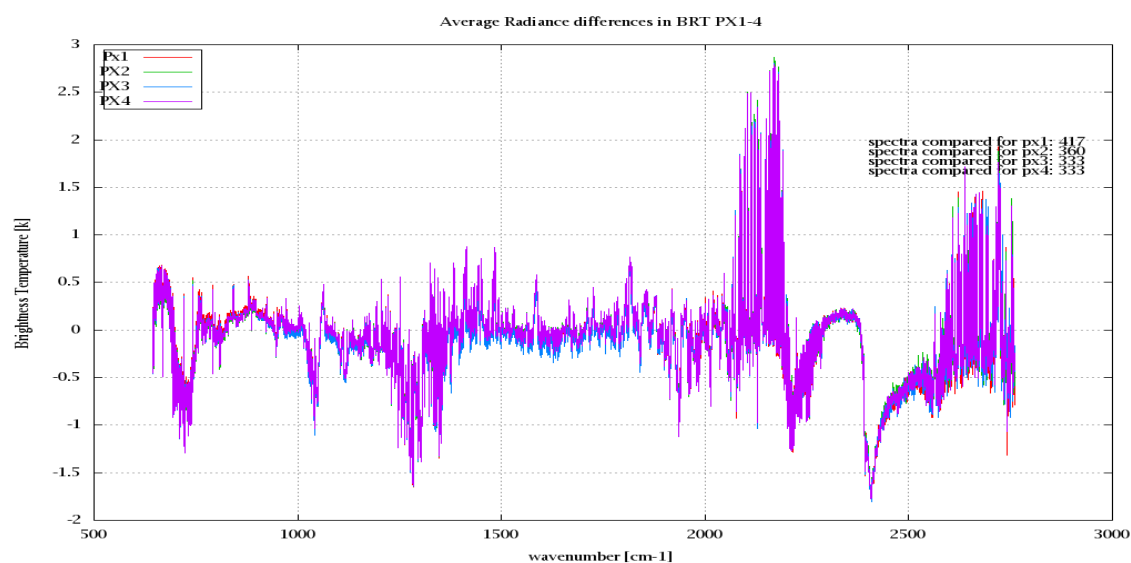


Figure 8: Average Radiance differences: OBS-CAL

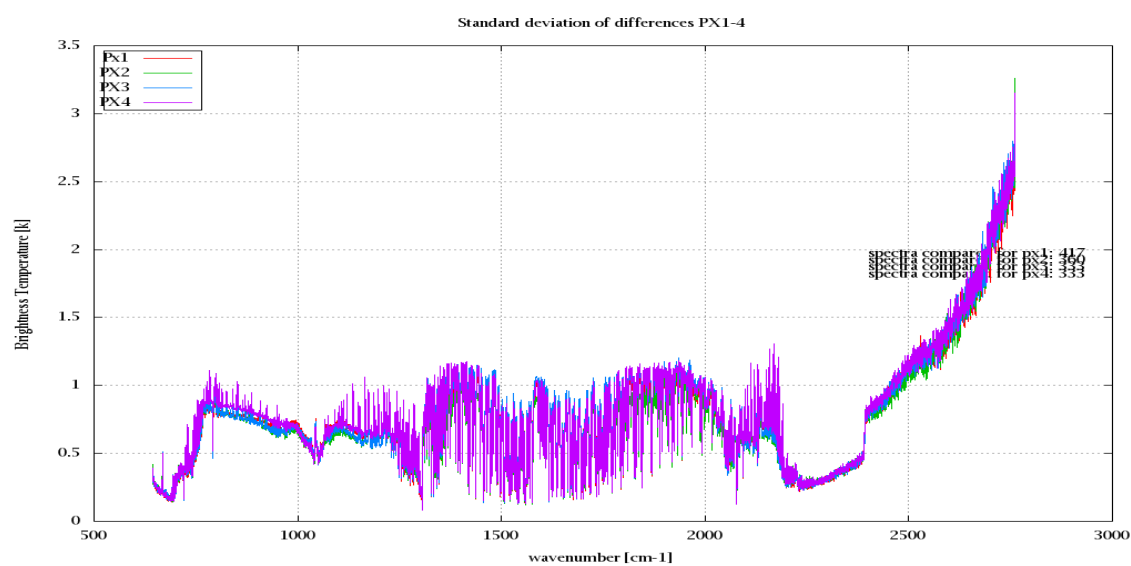


Figure 9: Standard Deviation of Radiance differences

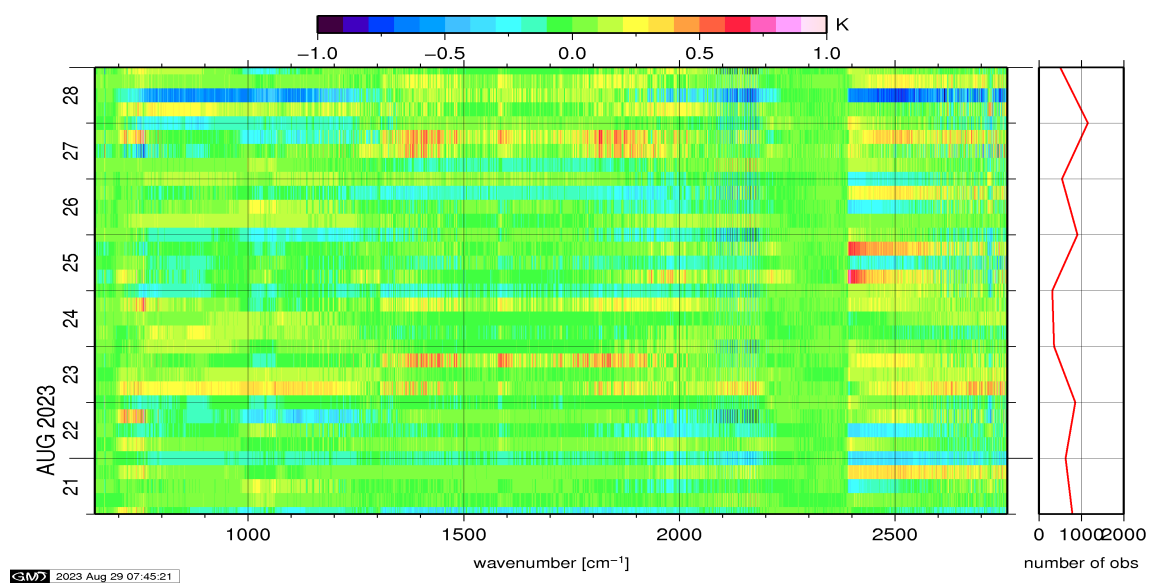


Figure 10: Radiance Anomaly in BT: All Channels

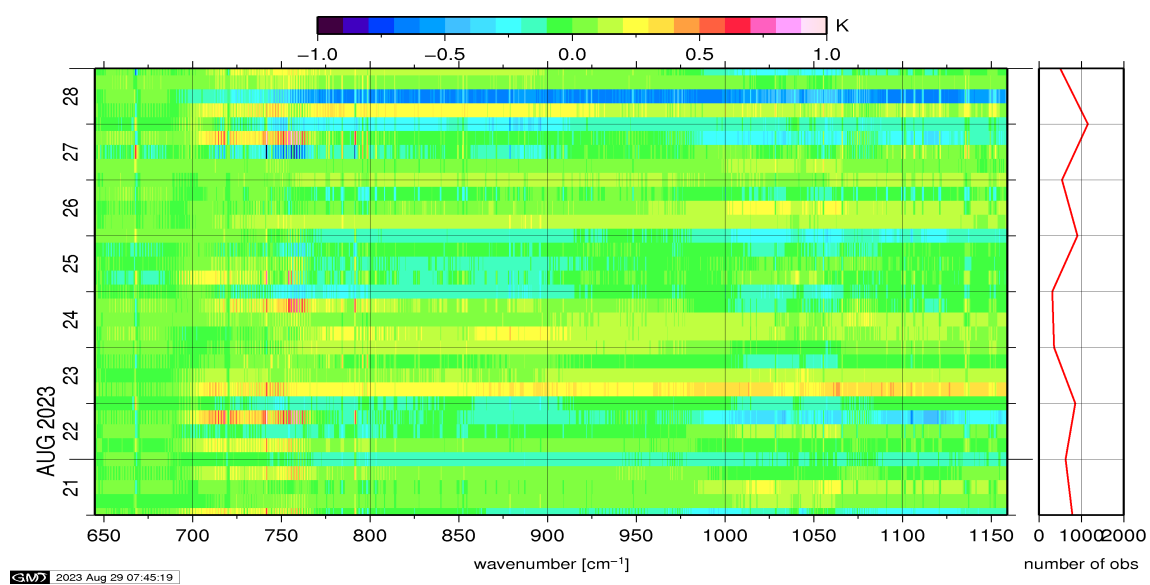


Figure 11: Radiance Anomaly in BT: IASI Band 1

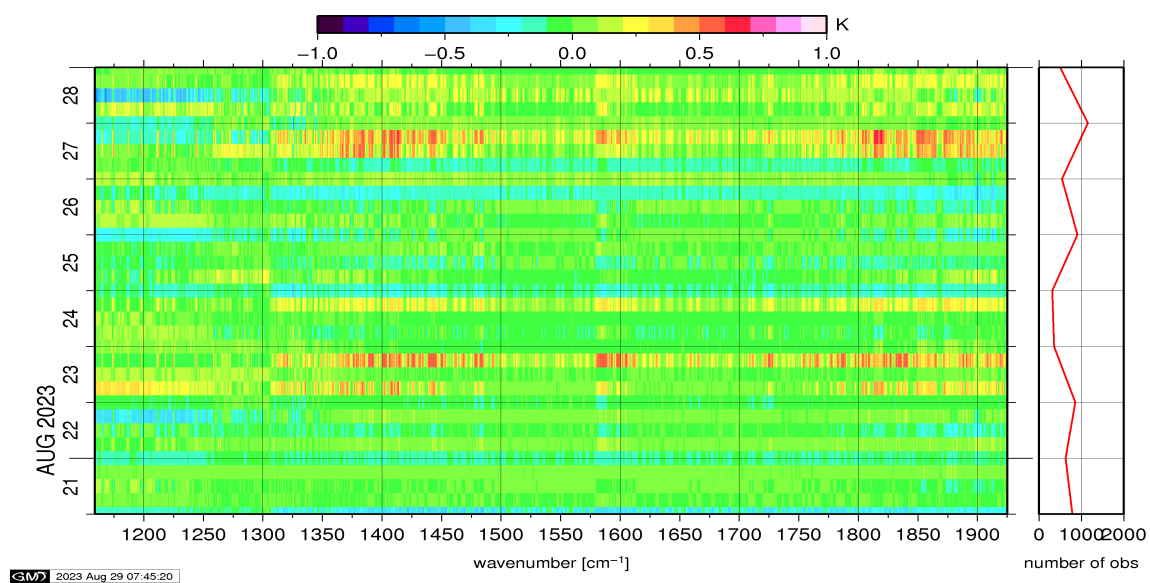


Figure 12: Radiance Anomaly in BT: IASI Band 2

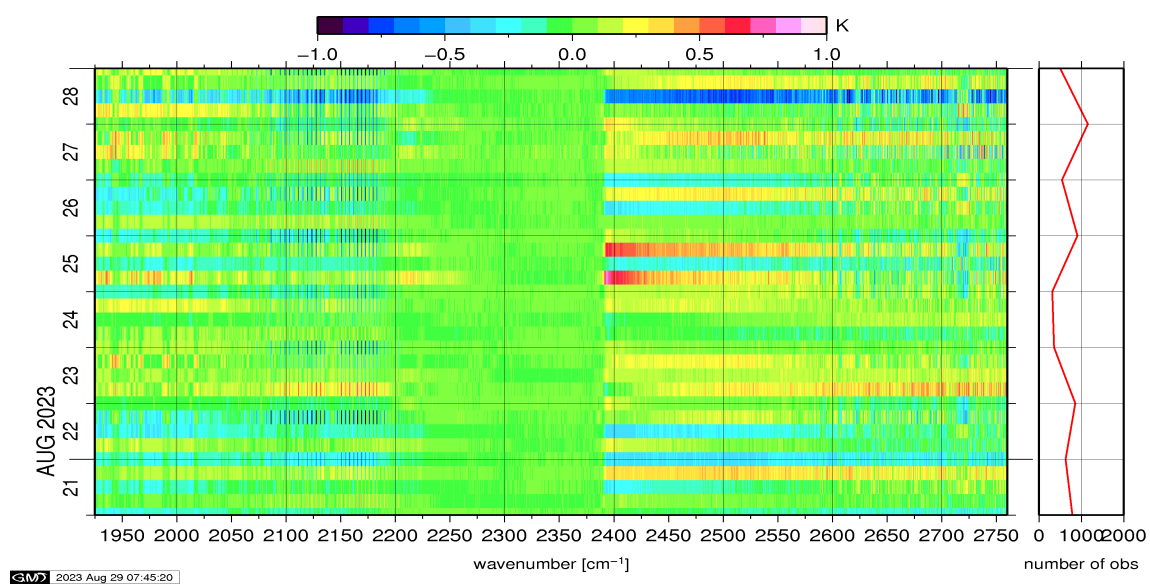


Figure 13: Radiance Anomaly in BT: IASI Band 3

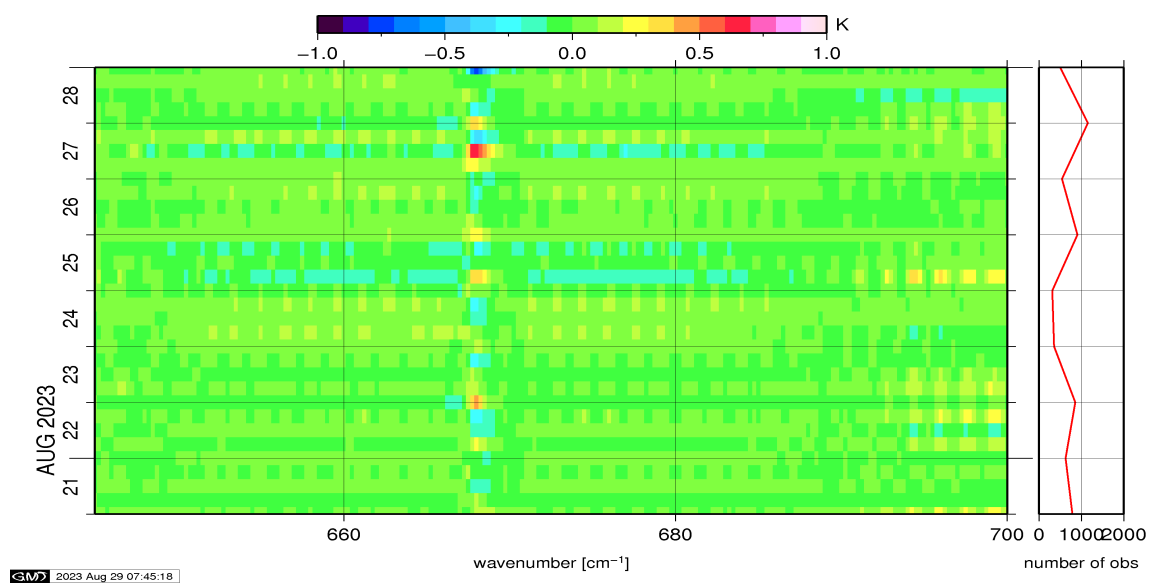


Figure 14: Radiance Anomaly in BT: CO2 14

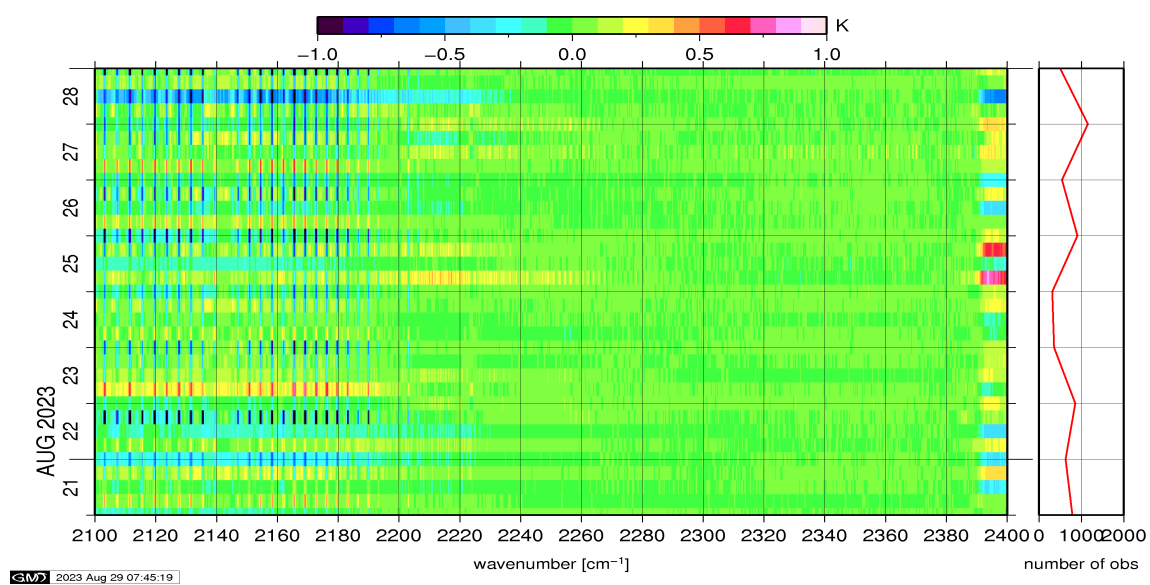


Figure 15: Radiance Anomaly in BT: CO2 4.3

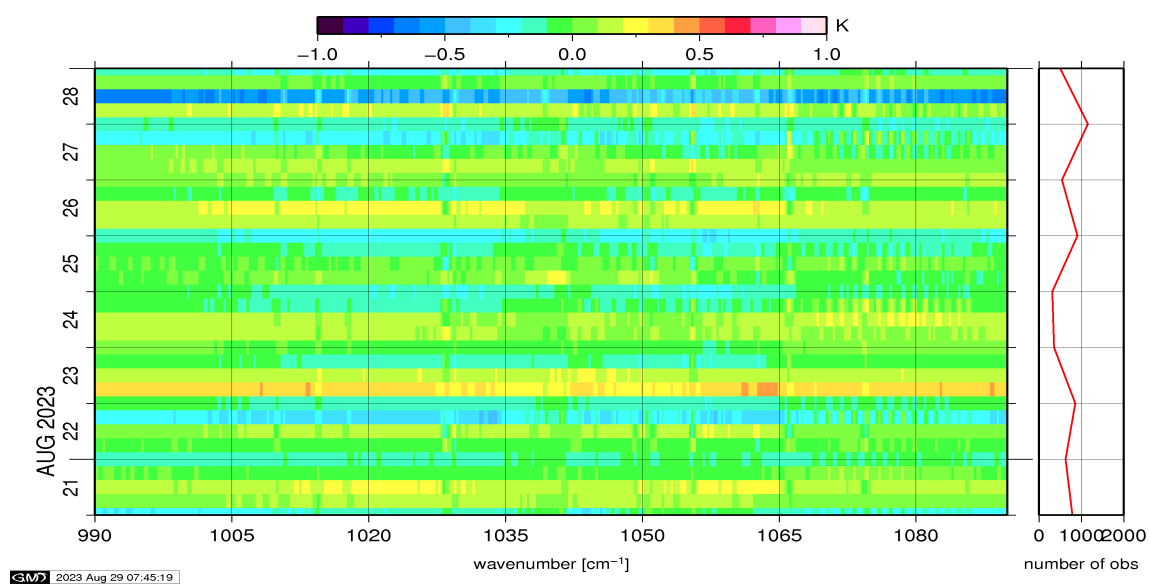


Figure 16: Radiance Anomaly in BT: O3