

# IASI L0 and L1 Daily Monitoring Report **Metop-C**

IASI monitoring team

26/03/2023 00:00:00 - 27/03/2023 00:00:00

## 1 Introduction

This report provides summary monitoring plots and figures from IASI instrument on the Metop-C satellite retrieved from the IASI L0 and L1 ENG product (3 minutes data packet) for 26/03/2023 00:00:00 - 27/03/2023 00:00:00 .

The monitoring data are extracted on PDU basis.

## 2 Data quantity 26/03/2023 00:00:00 - 27/03/2023 00:00:00

Product Type	Number	Action
L0 HKTM PDUs	481	-
L0 IASI PDUs	481	-
L1 ENG PDUs	480	-
L1 ENG distinct GEPSGranule	481	-
<b>L1 DPX PDUs (RM: IASI-HIRS)</b>	<b>0</b>	<b>e</b>
L1 DPS Files (RM: OBS-CAL NWP based)	480	-

Table 1: Data quantity

APID	Seq from	Seq to	Time from	Time to
PX1 (130)	5139	5365	20230326221152.214	20230326221253.183
PX1 (130)	6780	7103	20230326221910.257	20230326222036.741
PX2 (135)	5139	5365	20230326221152.214	20230326221253.183
PX2 (135)	6780	7103	20230326221910.257	20230326222036.741
PX3 (140)	5139	5365	20230326221152.214	20230326221253.183
PX3 (140)	6779	7103	20230326221910.038	20230326222036.741
PX4 (145)	5139	5365	20230326221152.214	20230326221253.183
PX4 (145)	6779	7103	20230326221910.038	20230326222036.741
IMG (150)	355	612	20230326221152.214	20230326221252.968
IMG (150)	2215	2583	20230326221910.038	20230326222036.741
VER (160)	16381	0	20230326044936.300	20230326044944.300
VER (160)	2	16382	20230326044944.300	20230326044944.300
VER (160)	-1	3	20230326044944.300	20230326044952.300
VER (160)	16382	0	20230326120632.277	20230326120640.277
VER (160)	3	16383	20230326120640.277	20230326120640.277
VER (160)	-1	4	20230326120640.277	20230326120648.277
VER (160)	6311	6350	20230326221152.214	20230326221256.210
VER (160)	6584	6640	20230326221904.202	20230326222040.198
AUX (180)	11091	11100	20230326221144.644	20230326221256.644
Continued on next page				

**Table 2 – continued from previous page**

<b>APID</b>	<b>Seq from</b>	<b>Seq to</b>	<b>Time from</b>	<b>Time to</b>
AUX (180)	11146	11158	20230326221904.636	20230326222040.631

Table 2: L0 data gaps

### 3 Instrument modes

Time	Transition from	Transition to
26/03/2023 00:00:10	-	Normal operation

Table 3: Instrument modes

### 4 L0 and L1 Data Quality

Flag	Value	Action
L0 IASI PDUs	481	-
L1 ENG PDUs	480	-
L1 ENG distinct GEPSGranule	481	-
GQisFlagQual set (PX1)	99.59 %	-
GQisFlagQual set (PX2)	99.62 %	-
GQisFlagQual set (PX3)	99.64 %	-
GQisFlagQual set (PX4)	99.55 %	-
GQisFlagQual set (all)	99.60 %	-

Table 4: Quality flags

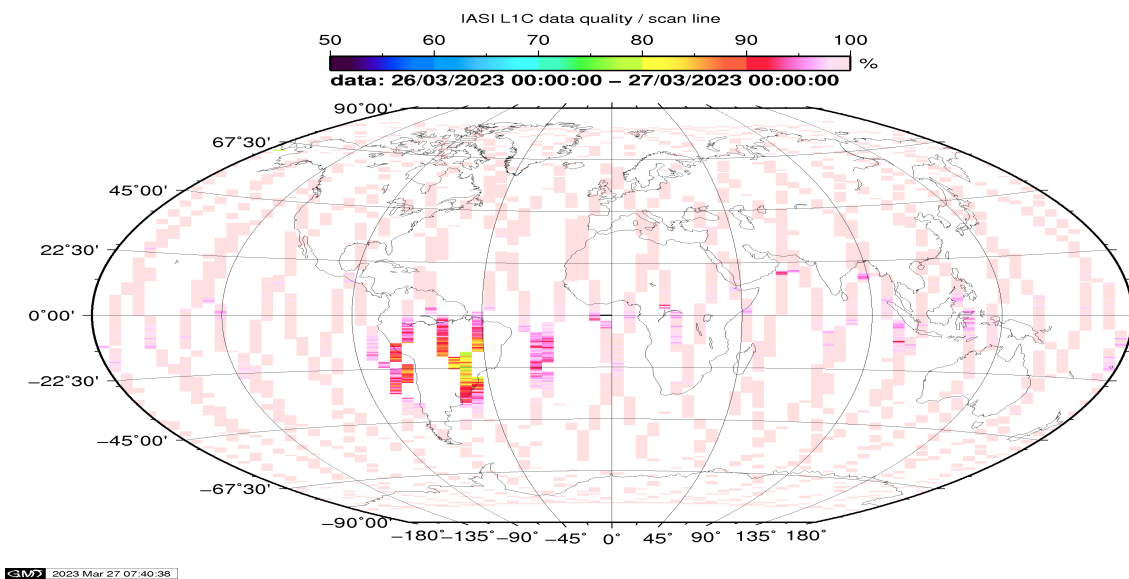


Figure 1: L1C data quality

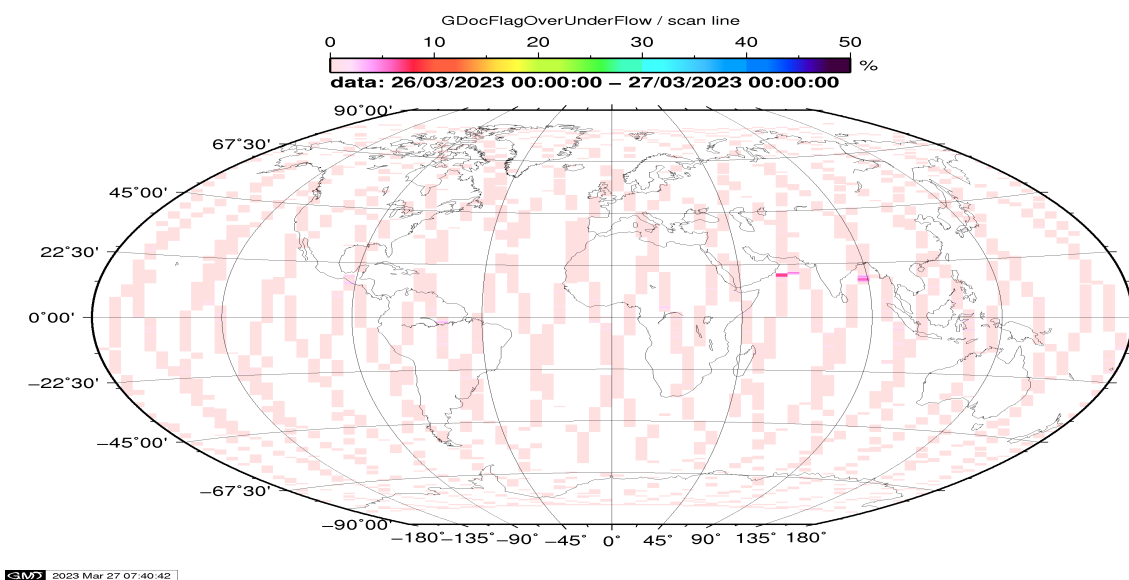


Figure 2: Flag of Over and Under Flows

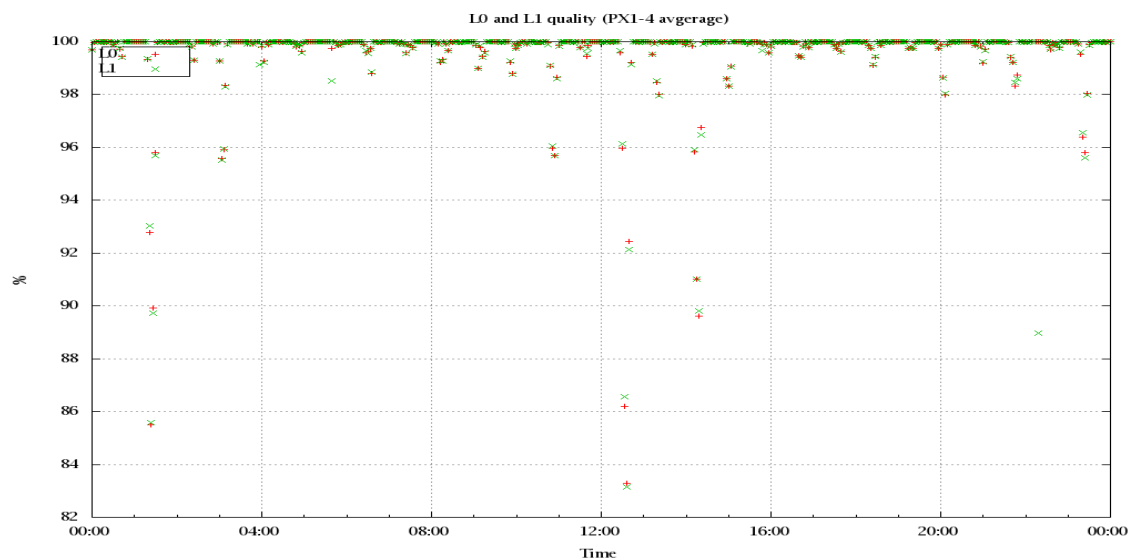


Figure 3: Level 0 and 1C overall quality

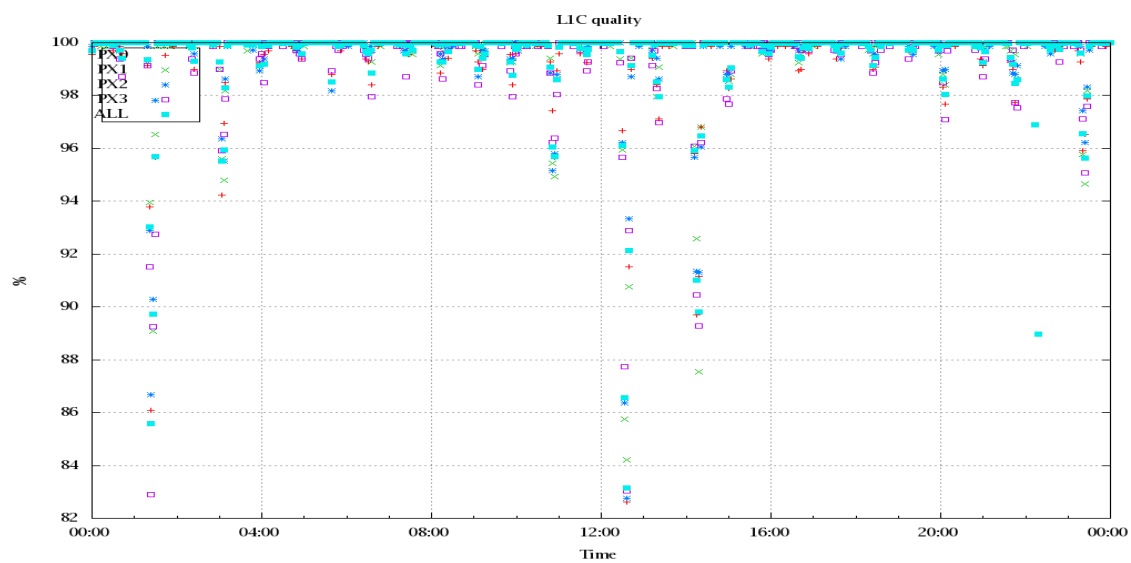


Figure 4: Level 1C quality

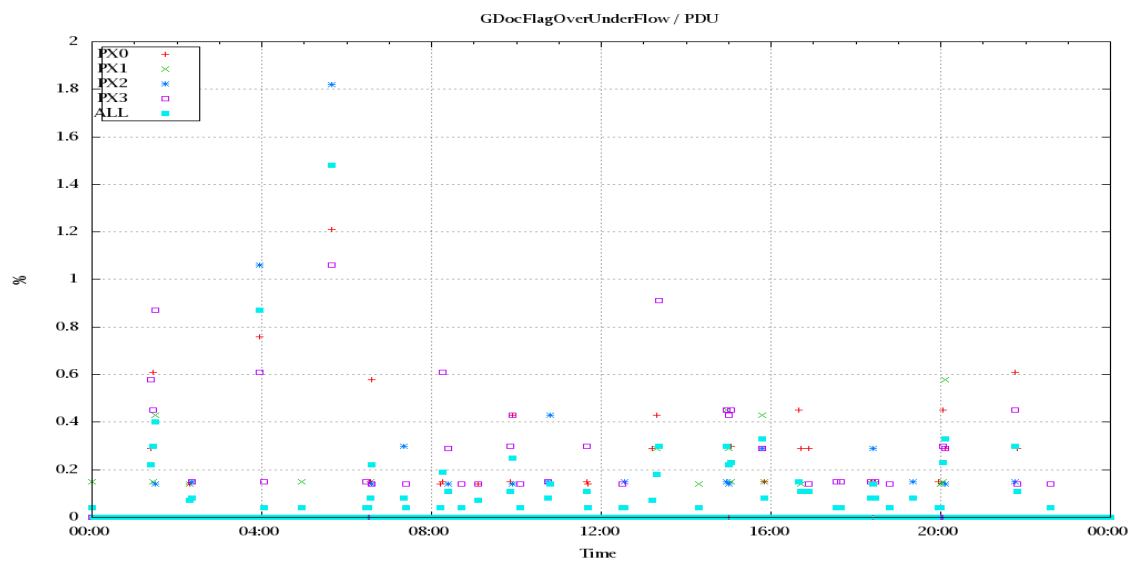


Figure 5: Timeseries of flag of Over and Under Flows

## 5 Radiance monitoring based on NWP

The radiance monitoring compares the IASI measurements (L1C-eps-products) obtained under clear sky situation over sea with modeled radiances. Cloud identification is based on cloud flag of co-located AVHRR L1B data in addition to information from the IASI L1C clustering analysis here only homogenous situations are taken into account (99.0 percent in first class).

A radiative transfer model (RTM) is feed with co-located ECMWF profiles of T, water vapor and Ozone. Between March 2007 and the 18th of May 2010 RTIASI in Version 4.0 is used. After that date the RTTOV model in V9.3 is used.

Information about the SST is obtained from the AVHRR L1B or taken from AVHRR scenes analysis (CGS only). In the following figures 28 to 34, the so-called radiance anomaly is shown. The radiance anomaly is defined as the difference between the quarter daily radiance average OBS-CAL (over all pixels and scan positions 10 to 20) and the average bias OBS-CAL (over all pixels and scan positions 10 to 20) of the last 30 days.

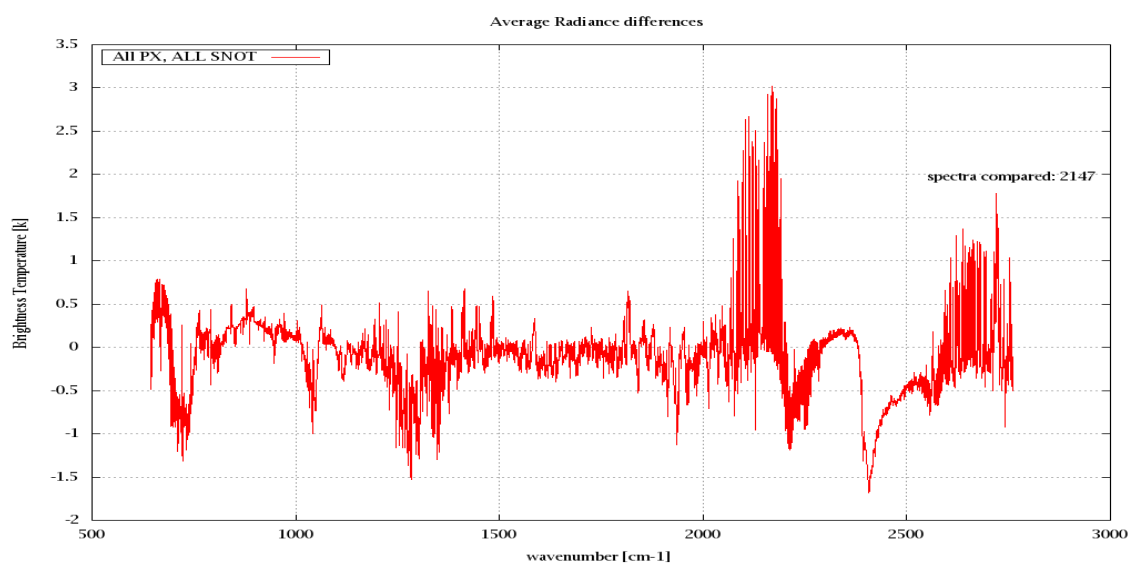


Figure 6: Average Radiance differences: OBS-CAL

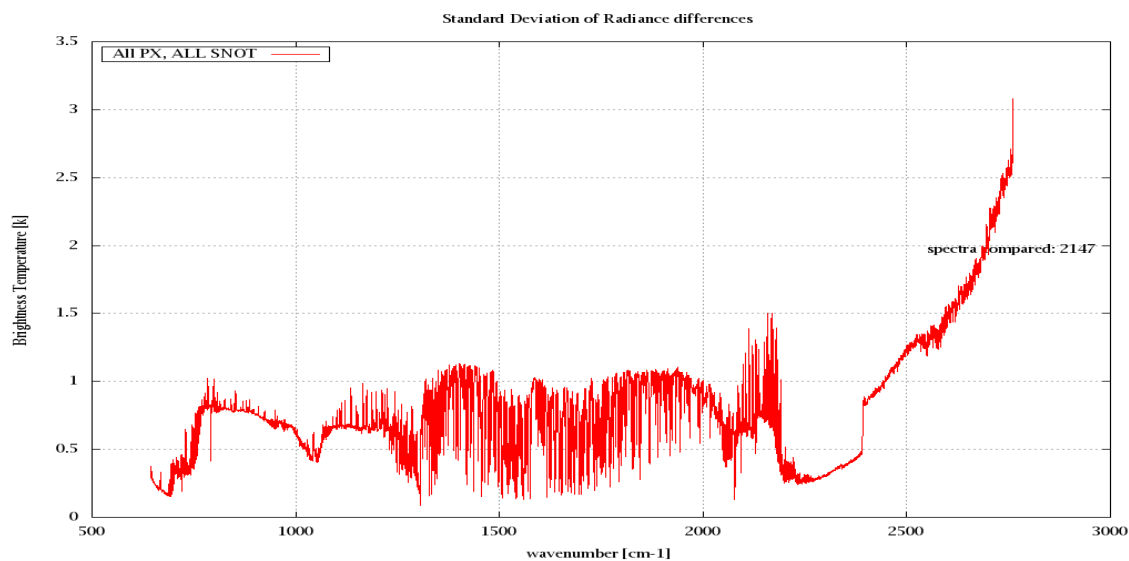


Figure 7: Standard Deviation of Radiance differences

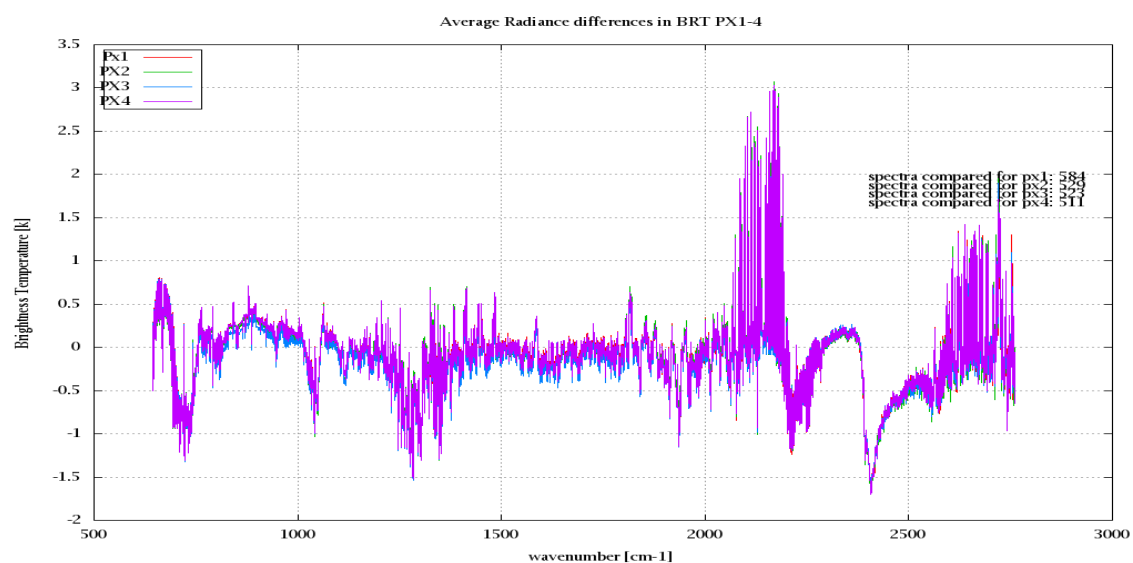


Figure 8: Average Radiance differences: OBS-CAL

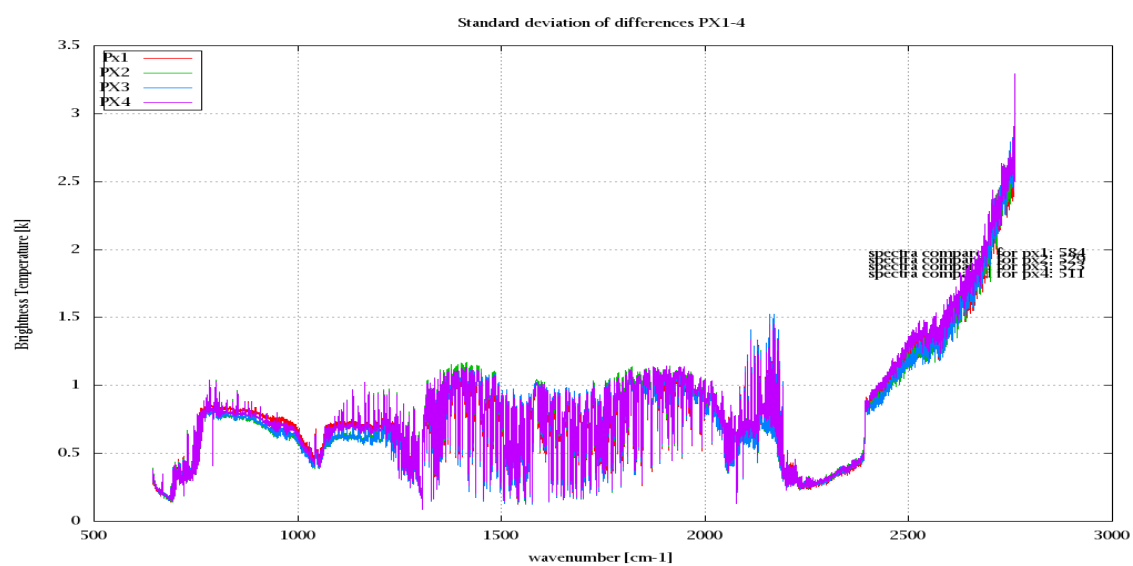


Figure 9: Standard Deviation of Radiance differences

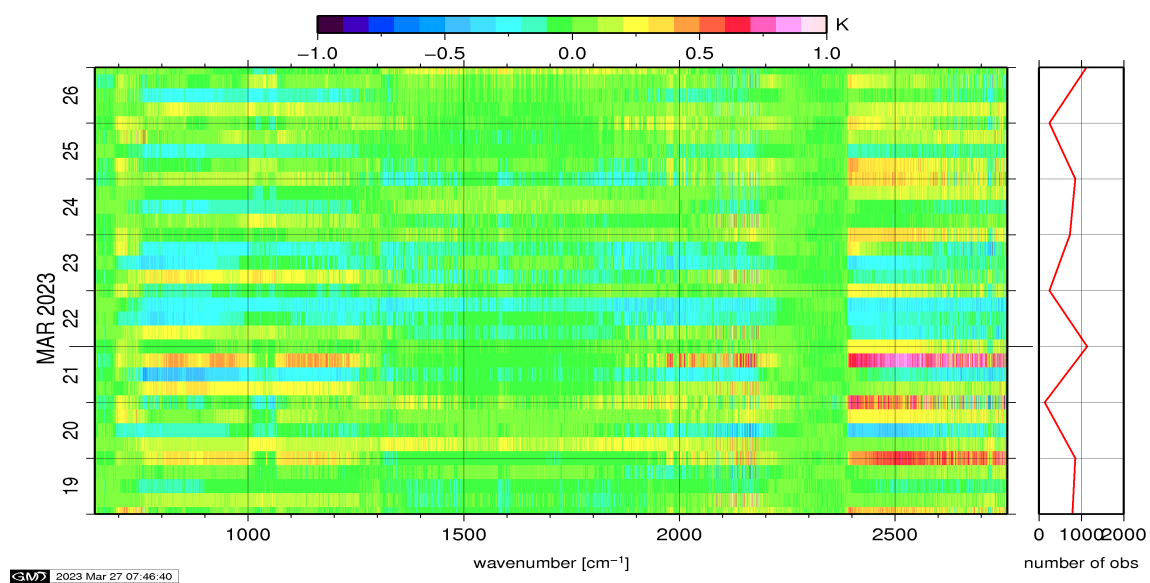


Figure 10: Radiance Anomaly in BT: All Channels

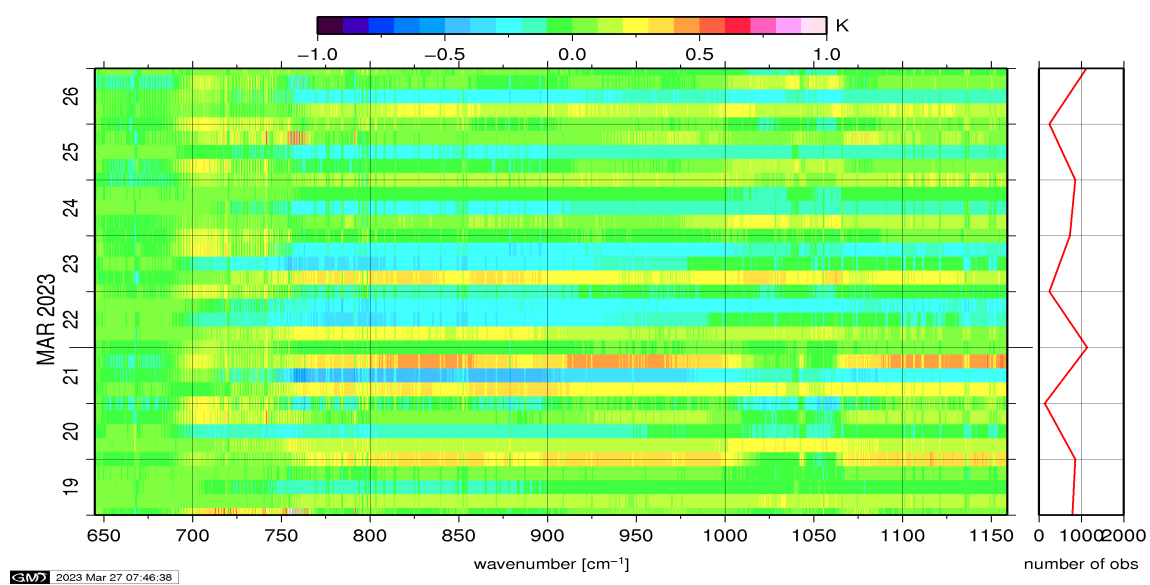


Figure 11: Radiance Anomaly in BT: IASI Band 1

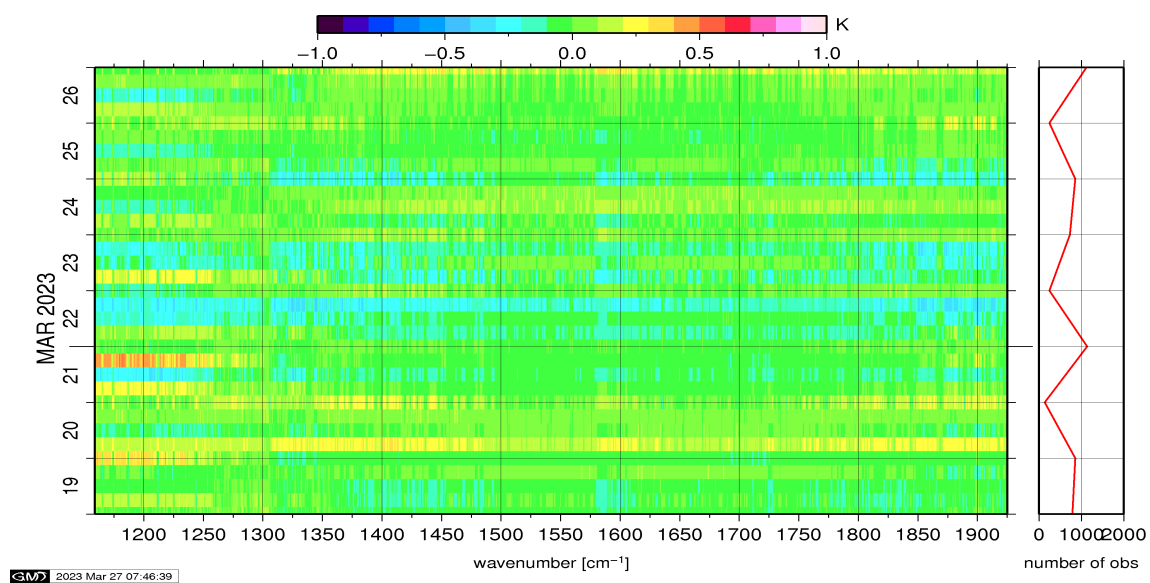


Figure 12: Radiance Anomaly in BT: IASI Band 2

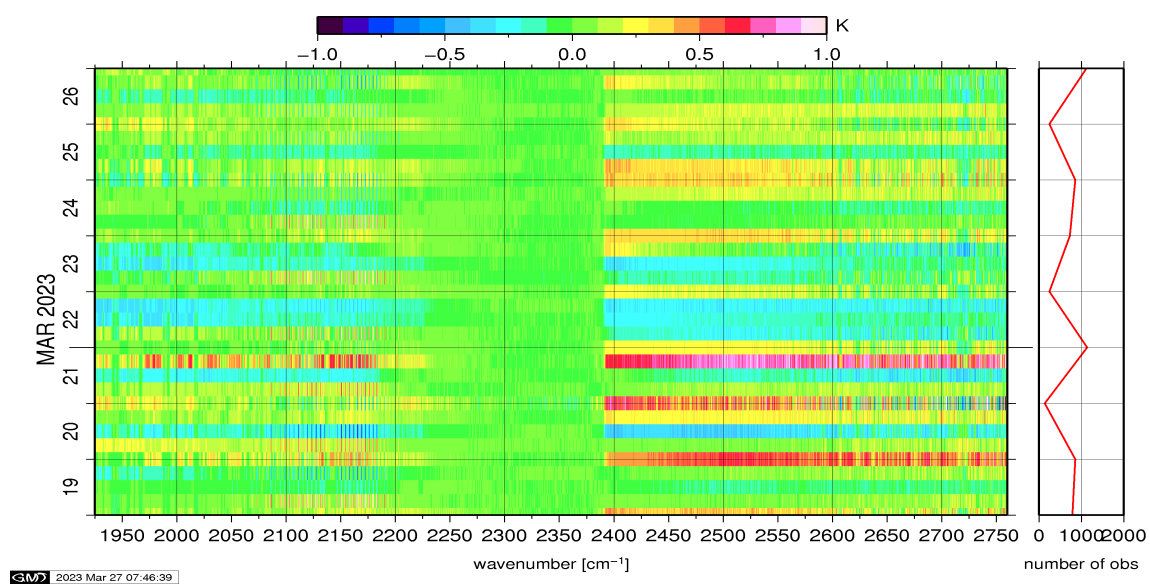


Figure 13: Radiance Anomaly in BT: IASI Band 3

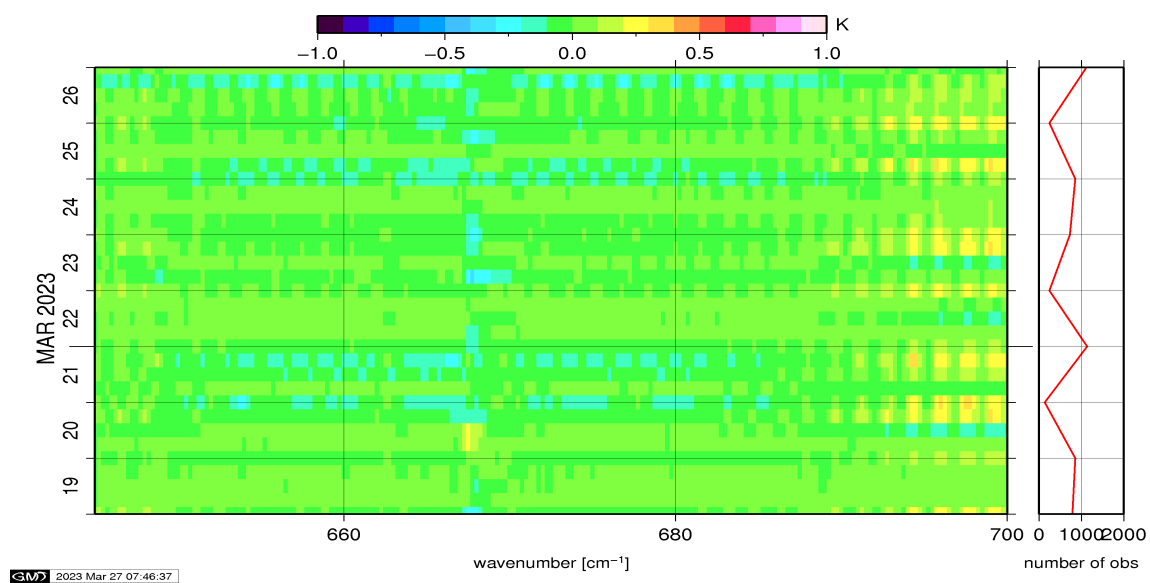


Figure 14: Radiance Anomaly in BT: CO2 14

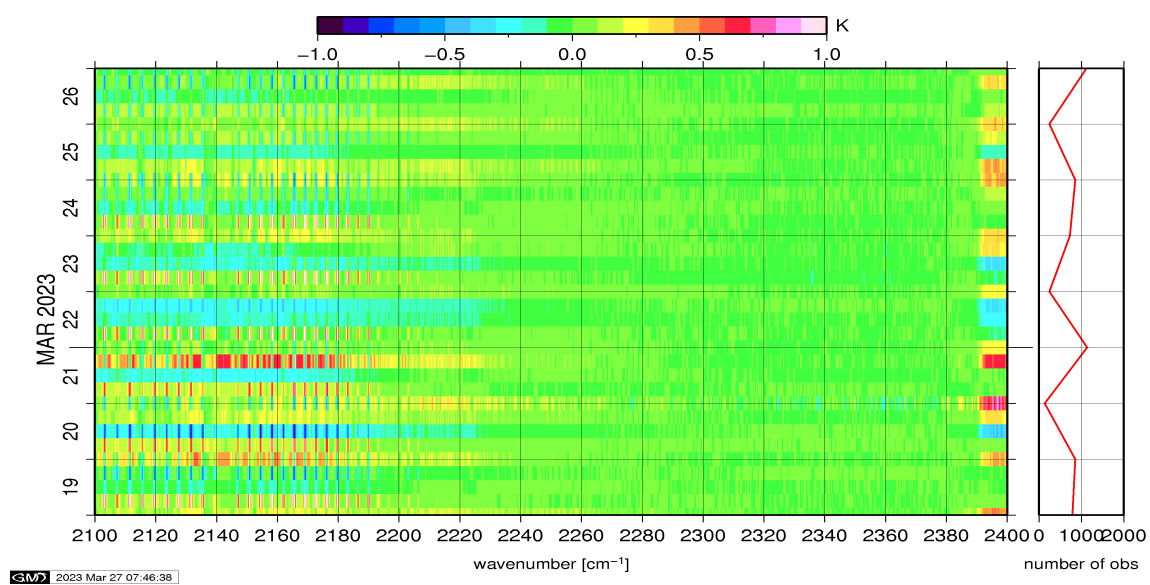


Figure 15: Radiance Anomaly in BT: CO2 4.3

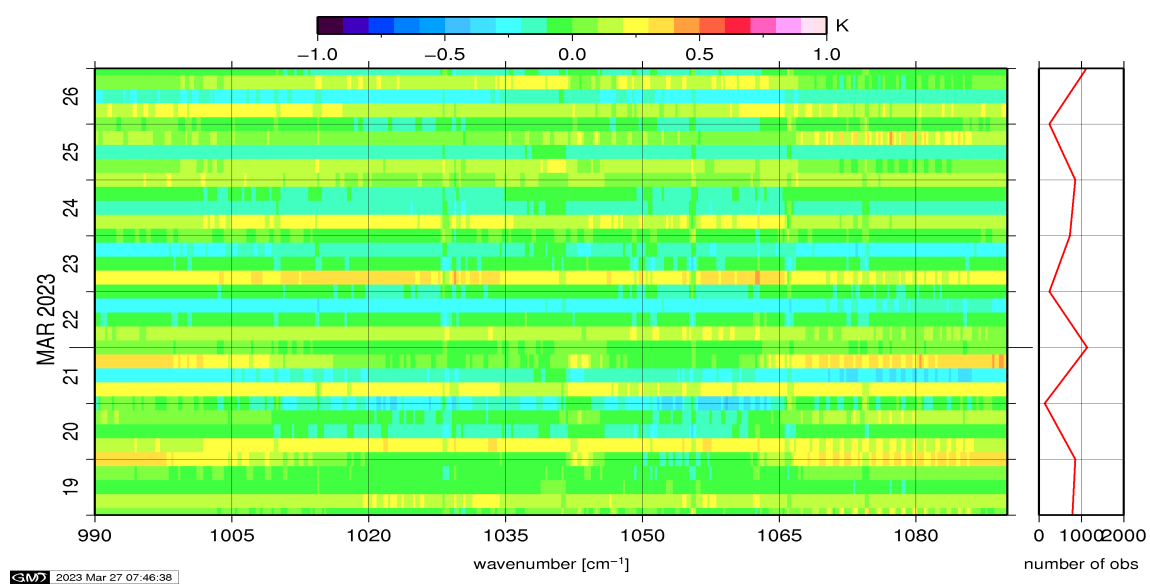


Figure 16: Radiance Anomaly in BT: O3