

IASI L0 and L1 Daily Monitoring Report

IASI monitoring team

20/12/2014 00:00:00 - 21/12/2014 00:00:00

1 Introduction

This report provides summary monitoring plots and figures from IASI instrument on the MetOp-A satellite retrieved from the IASI L0 and L1 ENG product (3 minute data packet) for 20/12/2014 00:00:00 - 21/12/2014 00:00:00 .

The monitoring data are extracted on PDU basis.

Data extraction, calibration, processing and statistics are performed at EUMETSAT.

2 Data quantity 20/12/2014 00:00:00 - 21/12/2014 00:00:00

Product Type	Number	Action
L0 HKTM PDUs	481	-
L0 IASI PDUs	481	-
L1 ENG PDUs	480	-
L1 ENG distinct GEPSGranule	481	-
L1 DPX PDUs (RM: IASI-HIRS)	402	e
L1 DPS Files (RM: OBS-CAL NWP based)	480	-

Table 1: Data quantity

APID	Seq from	Seq to	Time from	Time to
PX1 (130)	-	-	-	-
PX2 (135)	8857	8859	20141220021855.524	20141220021855.957
PX2 (135)	13583	13585	20141220211950.939	20141220211951.369
PX2 (135)	2851	2853	20141220225746.382	20141220225748.331
PX3 (140)	2337	2339	20141220003708.519	20141220003708.948
PX3 (140)	12363	12365	20141220023430.670	20141220023431.103
PX3 (140)	13583	13585	20141220211950.939	20141220211951.369
PX3 (140)	2852	2854	20141220225748.112	20141220225748.546
PX4 (145)	1455	1457	20141220213846.077	20141220213846.510
PX4 (145)	2852	2854	20141220225748.112	20141220225748.546
IMG (150)	15493	15495	20141220225025.516	20141220225025.953
VER (160)	6959	6961	20141220213522.370	20141220213522.370
AUX (180)	-	-	-	-

Table 2: L0 data gaps

3 Instrument modes

Time	Transition from	Transition to
20/12/2014 00:00:02	-	Normal operation
20/12/2014 05:13:06	Normal operation	Auxiliary ASE synchronised
20/12/2014 05:14:58	Auxiliary ASE synchronised	External calibration
20/12/2014 09:09:05	External calibration	Auxiliary ASE synchronised
20/12/2014 09:10:57	Auxiliary ASE synchronised	Normal operation

Table 3: Instrument modes

4 L0 and L1 Data Quality

Flag	Value	Action
L0 IASI PDUs	481	-
L1 ENG PDUs	480	-
L1 ENG distinct GEPSGranule	481	-
GQisFlagQual set (PX1)	99.40 %	-
GQisFlagQual set (PX2)	99.35 %	-
GQisFlagQual set (PX3)	99.43 %	-
GQisFlagQual set (PX4)	99.42 %	-
GQisFlagQual set (all)	99.40 %	-

Table 4: Quality flags

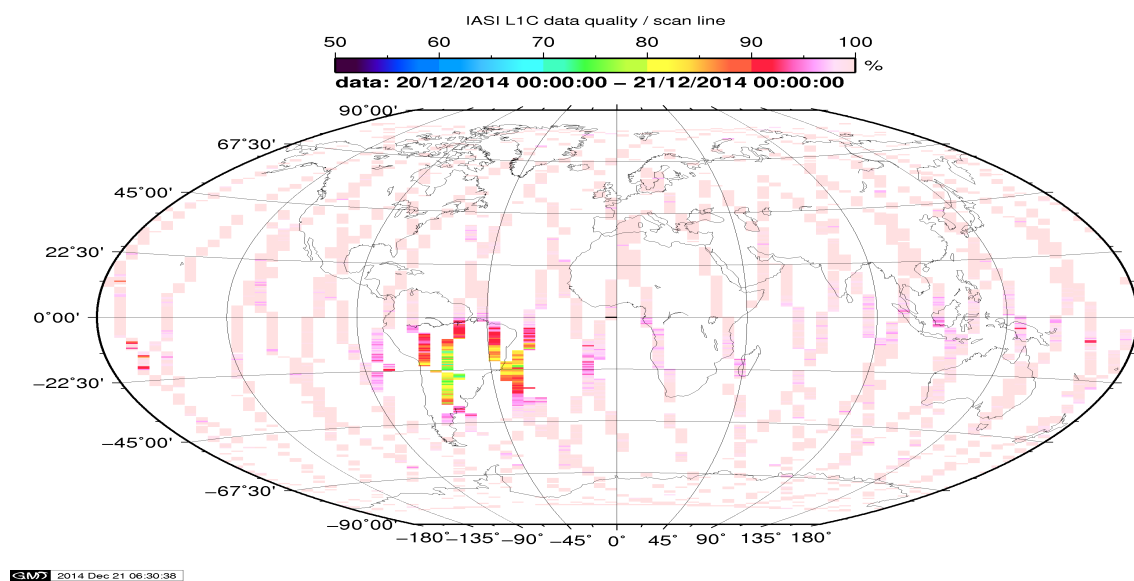


Figure 1: L1C data quality

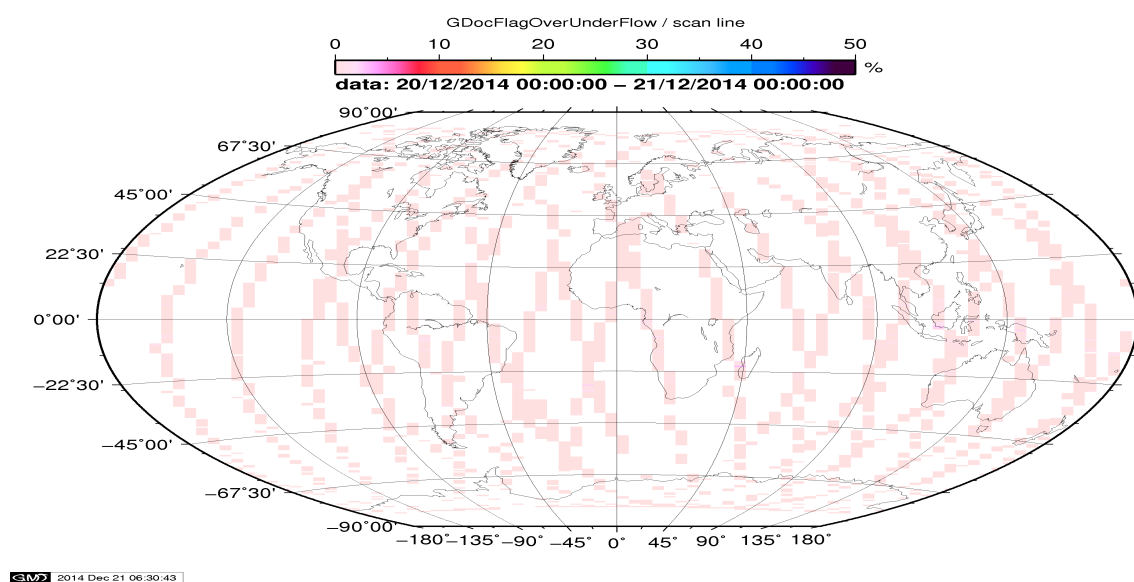


Figure 2: Flag of Over and Under Flows

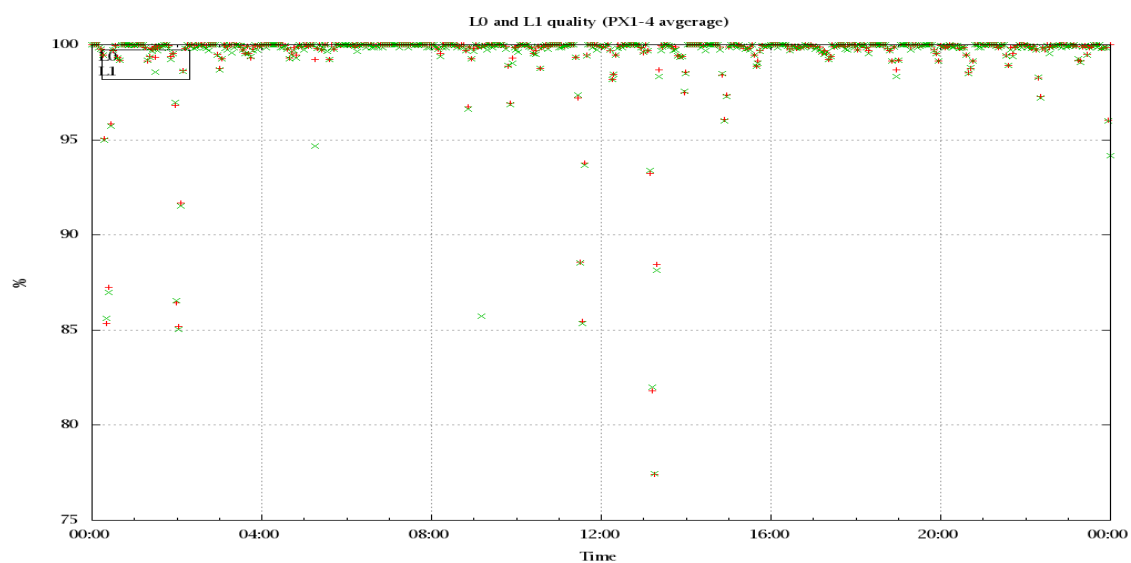


Figure 3: Level 0 and 1C overall quality

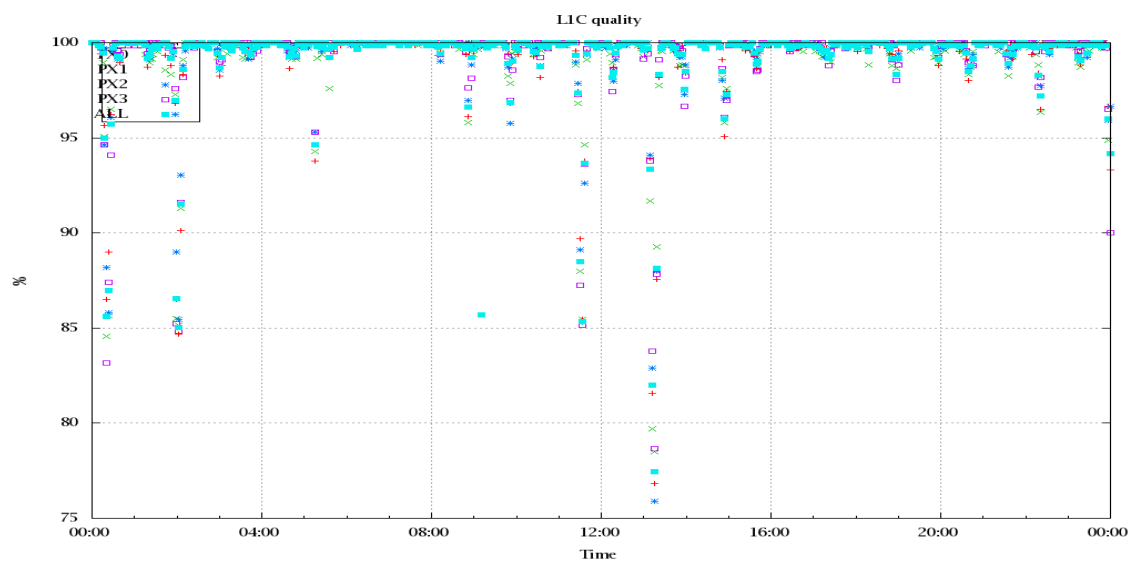


Figure 4: Level 1C quality

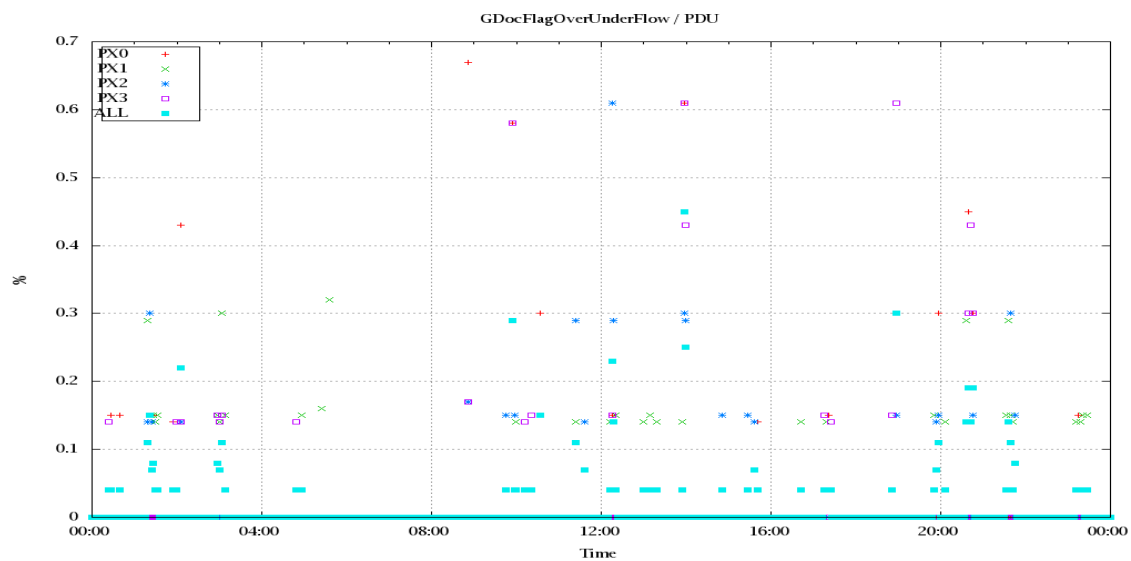


Figure 5: OverUnderFlowFlag timeseries

5 Radiance monitoring based on NWP

The radiance monitoring compares the IASI measurements (L1C-eps-products) obtained under clear sky situation over sea with modeled radiances. Cloud identification is based on cloud flag of co-located AVHRR L1B data in addition to information from the IASI L1C clustering analysis here only homogenous situations are taken into account (99.0 percent in first class). A radiative transfer model (RTM) is feed with co-located ECMWF profiles of T,WV, and Ozon. Between March 2007 and the 18th of May 2010 RTIASI in Version 4.0 is used. After that date the RTTOV model in V9.3 is used. Information about the SST is obtained from the AVHRR L1B or taken from AVHRR scenes analysis (CGS only). In the following figures 10 to 16 the so-called radiance anomaly is shown. The radiance anomaly is defined as the difference between the quarter daily radiance average OBS-CAL (over all pixel and scan position 10 to 20) and the average bias OBS-CAL (over all pixel and scan position 10 to 20) of the last 30 days.

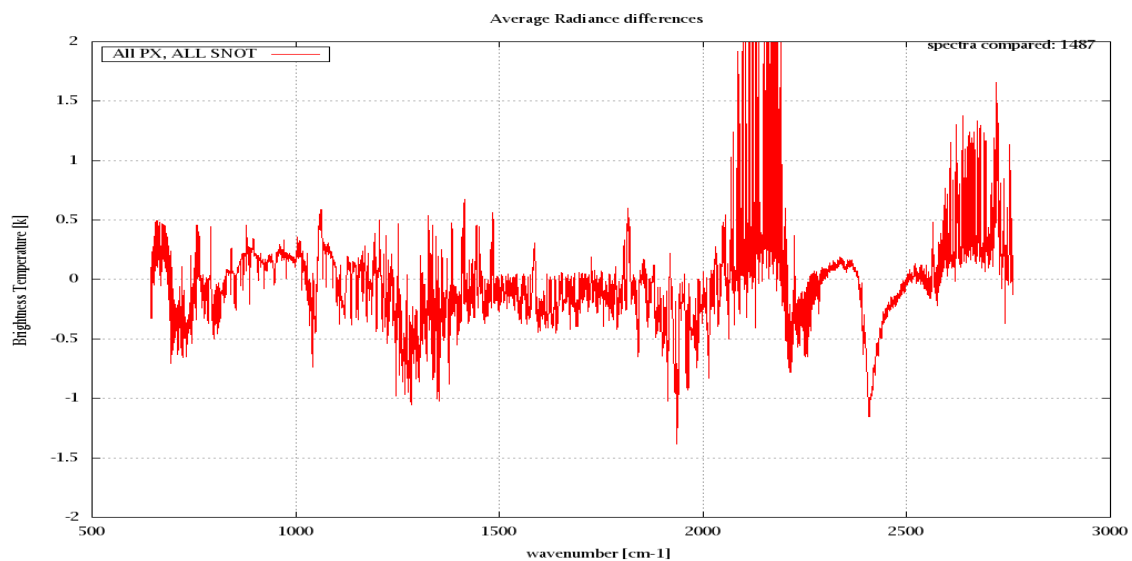


Figure 6: Average Radiance differences: OBS-CAL

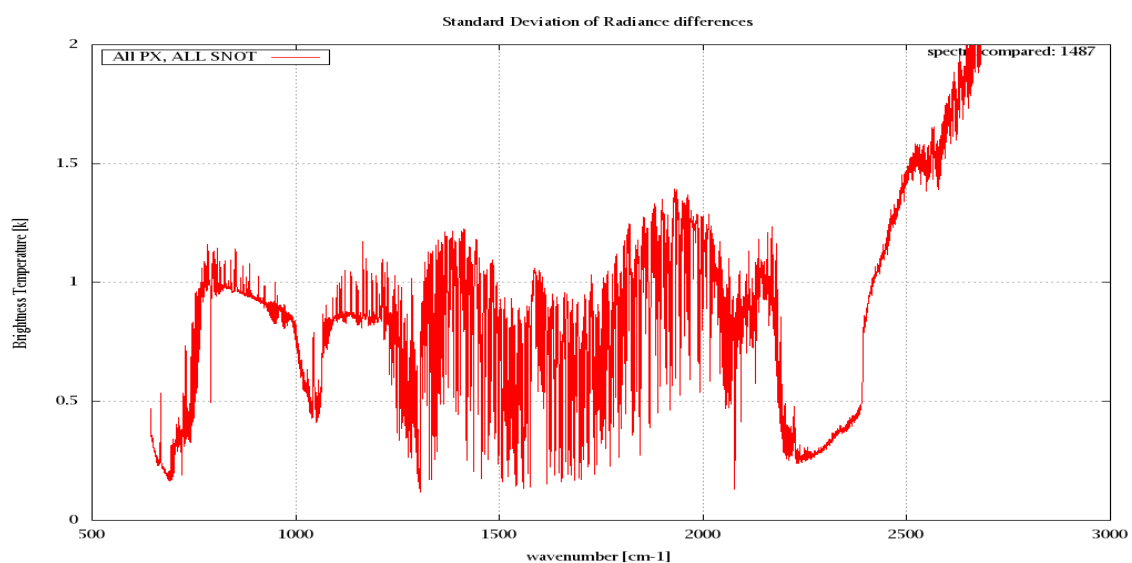


Figure 7: Standard Deviation of Radiance differences

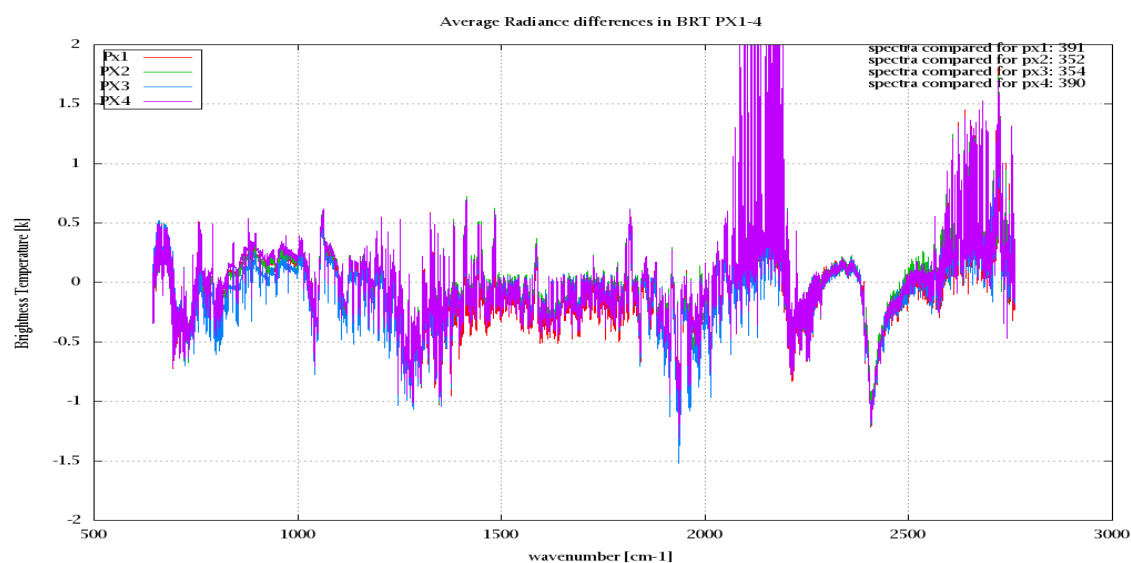


Figure 8: Average Radiance differences: OBS-CAL

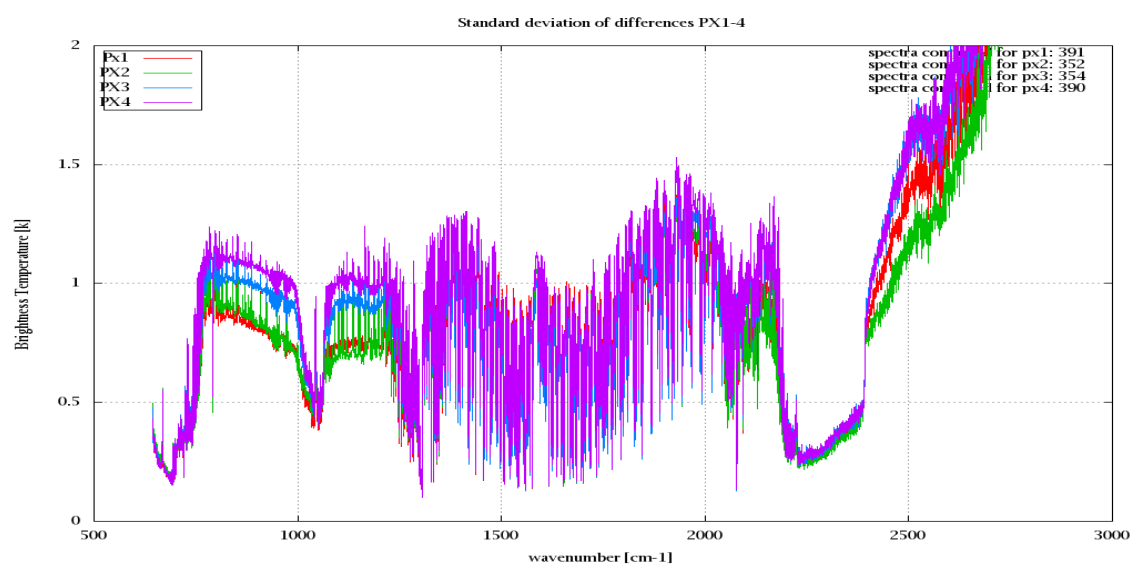


Figure 9: Standard Deviation of Radiance differences

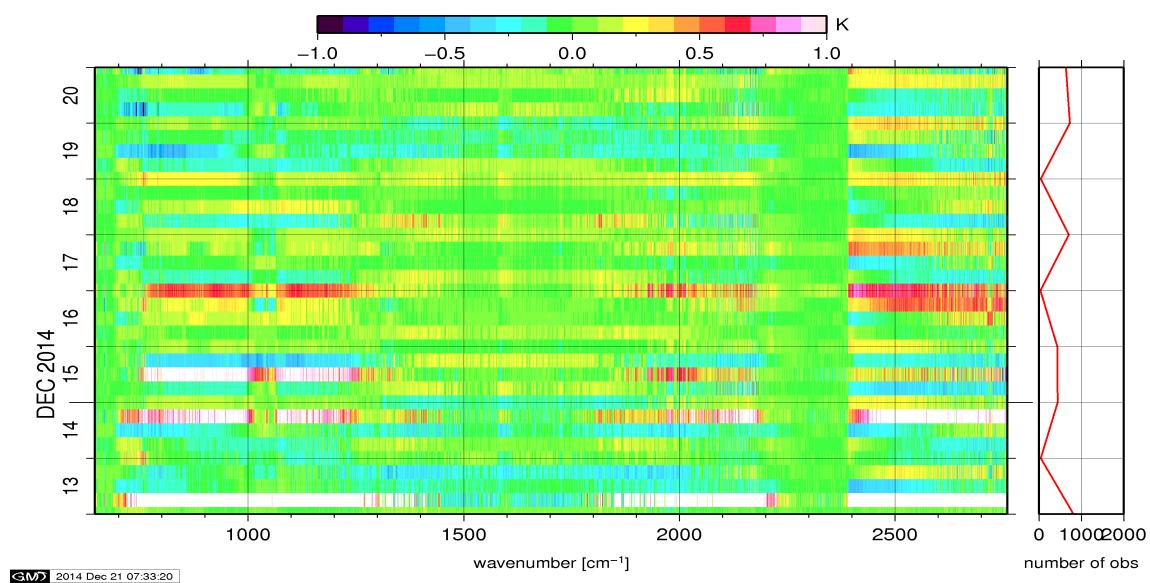


Figure 10: Radiance Anomaly in BRT: All Channels

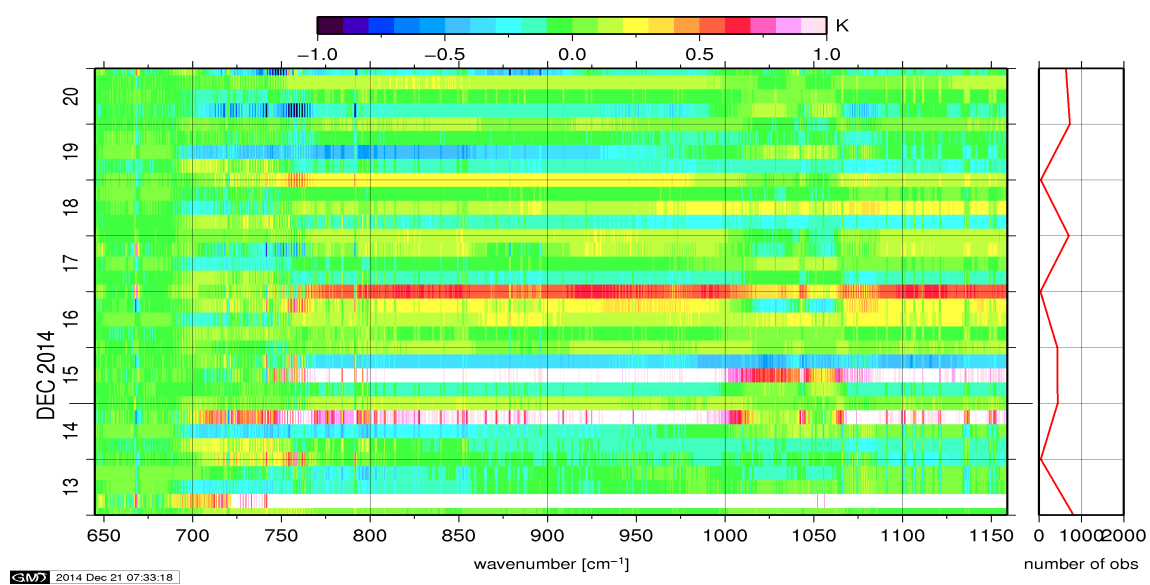


Figure 11: Radiance Anomaly in BRT: IASI Band 1

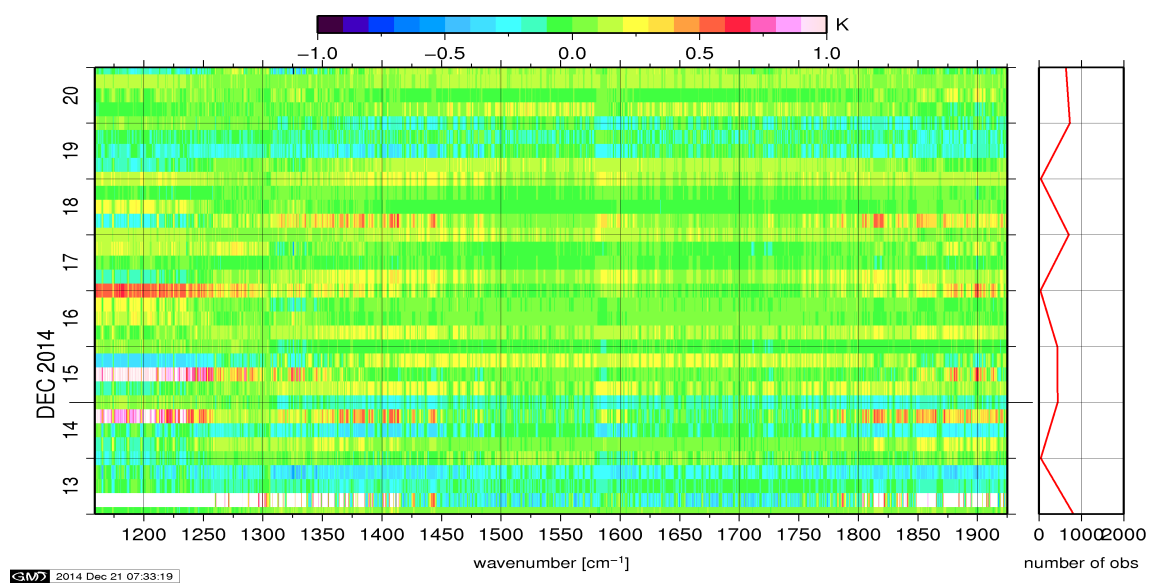


Figure 12: Radiance Anomaly in BRT: IASI Band 2

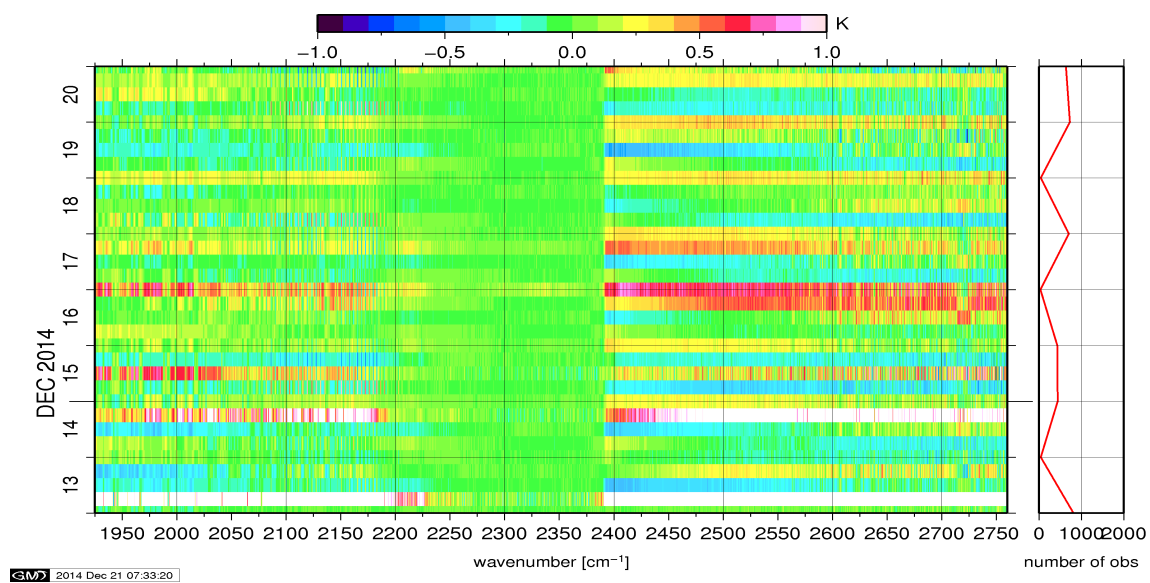


Figure 13: Radiance Anomaly in BRT: IASI Band 3

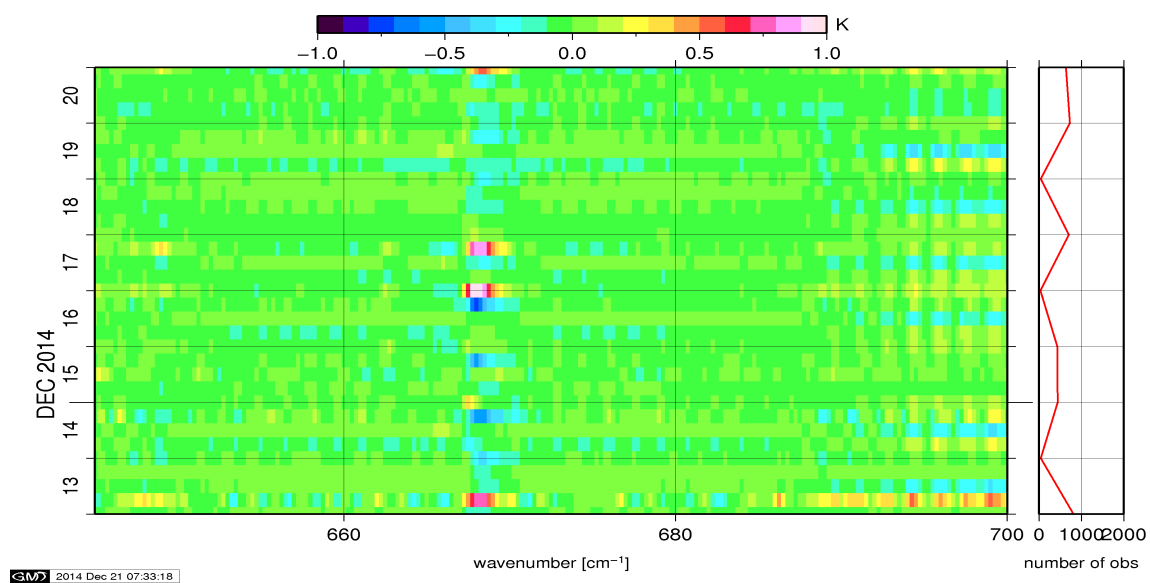


Figure 14: Radiance Anomaly in BRT: CO2 14

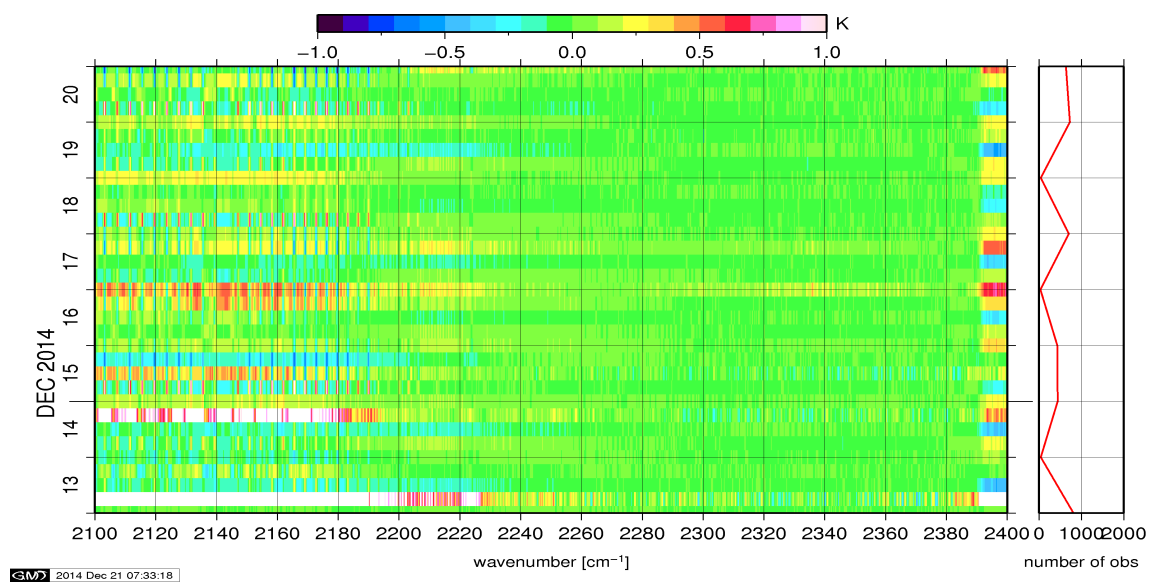


Figure 15: Radiance Anomaly in BRT: CO2 4.3

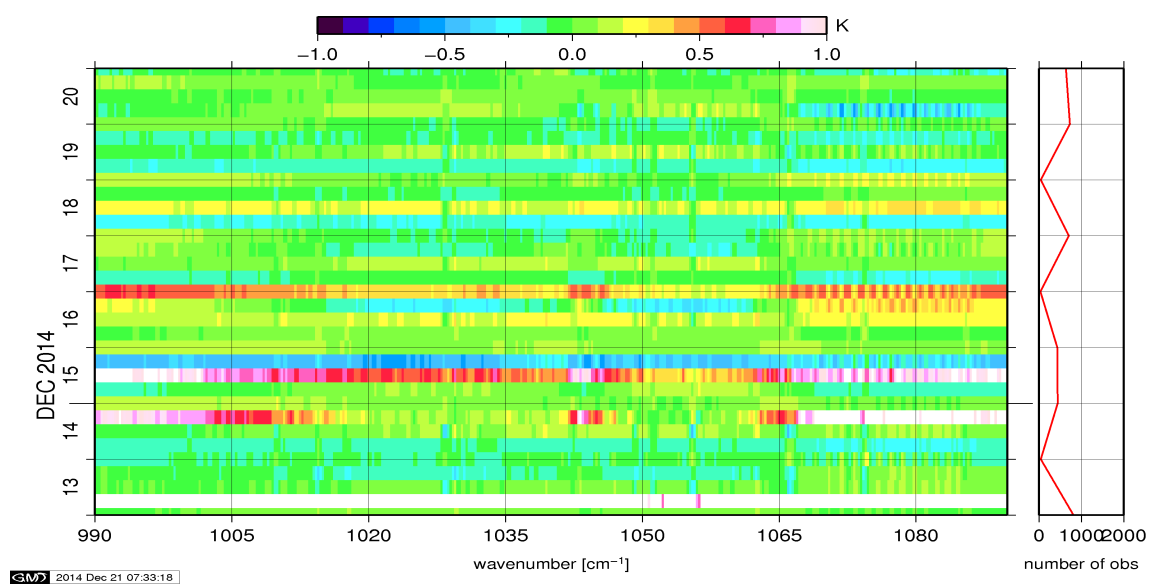


Figure 16: Radiance Anomaly in BRT: O3

6 IASI-HIRS radiance comparison Channel 1-19

The radiance comparison of IASI and HIRS/4 on-board MetOp is performed on all pixel with distances smaller than 3 km between IASI and HIRS. All sky conditions are covered. The radiance differences IASI - HIRS are given in brightness temperatures at 280K reference temperature. All conditions (clear, cloudy, day and night) are given in red in the following figures. The clear sky conditions at night are given in green and the clear sky cases during daylight are displayed in blue.

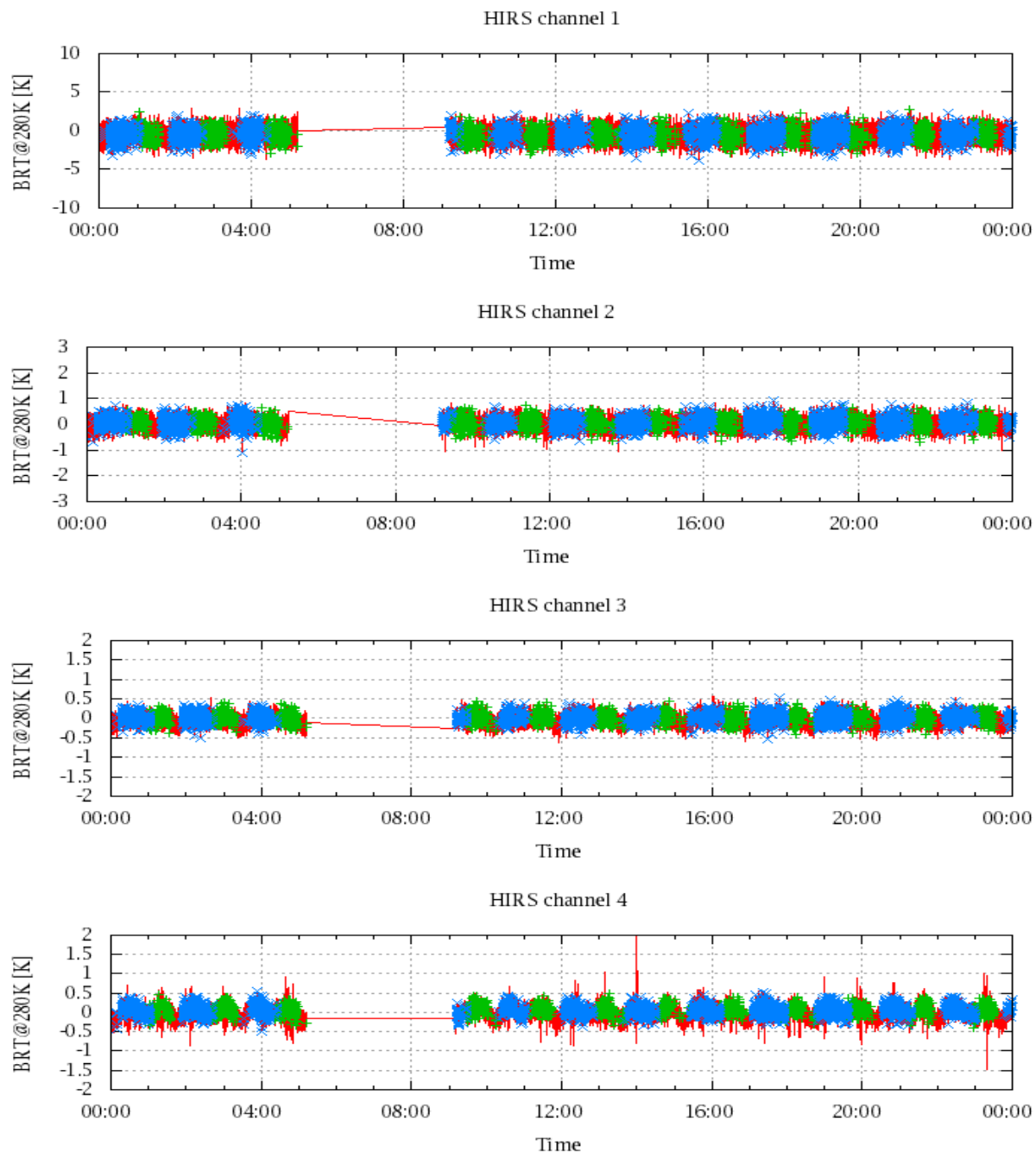


Figure 17: Radiance Differences in BRT

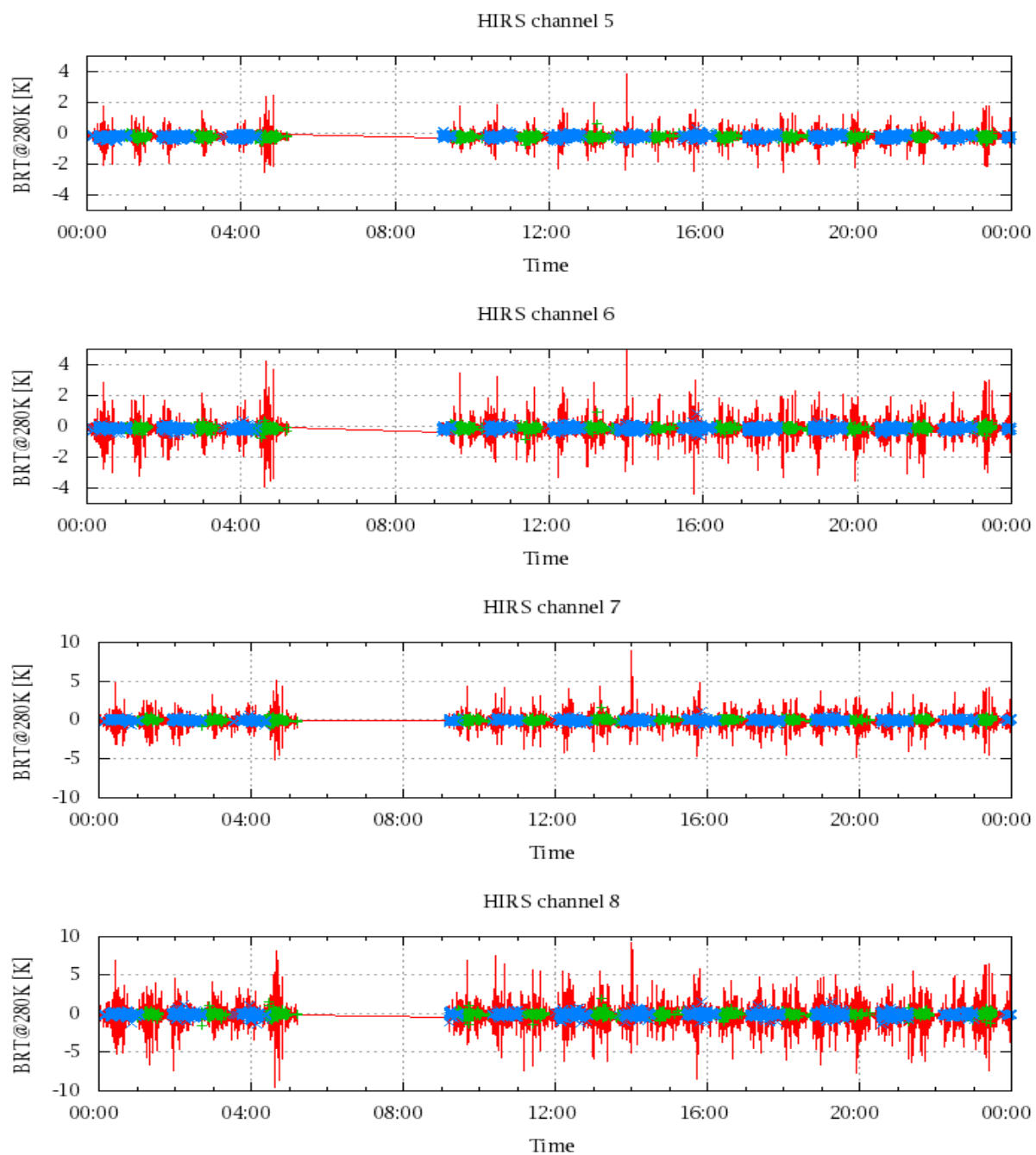


Figure 18: Radiance Differences in BRT

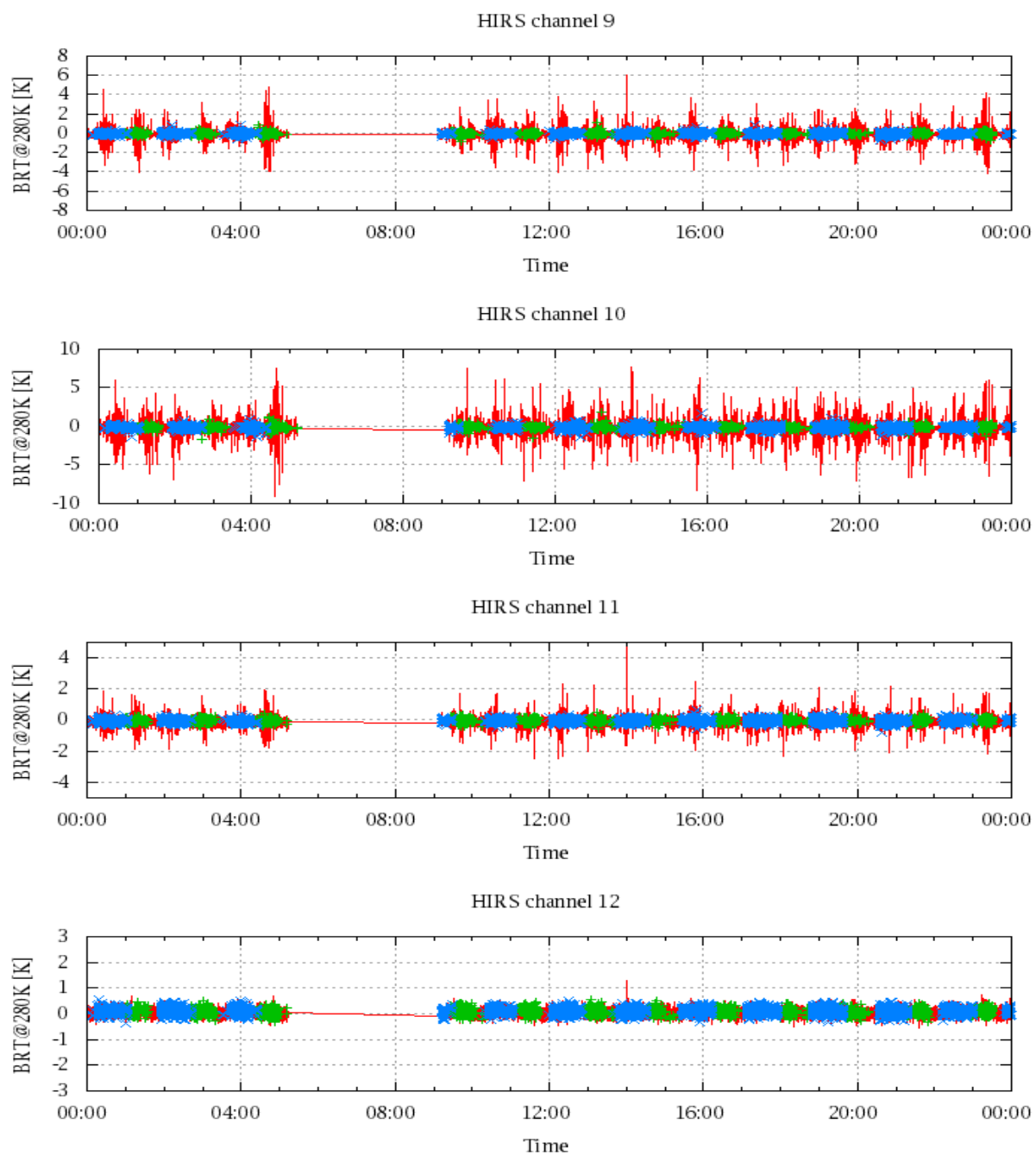


Figure 19: Radiance Differences in BRT

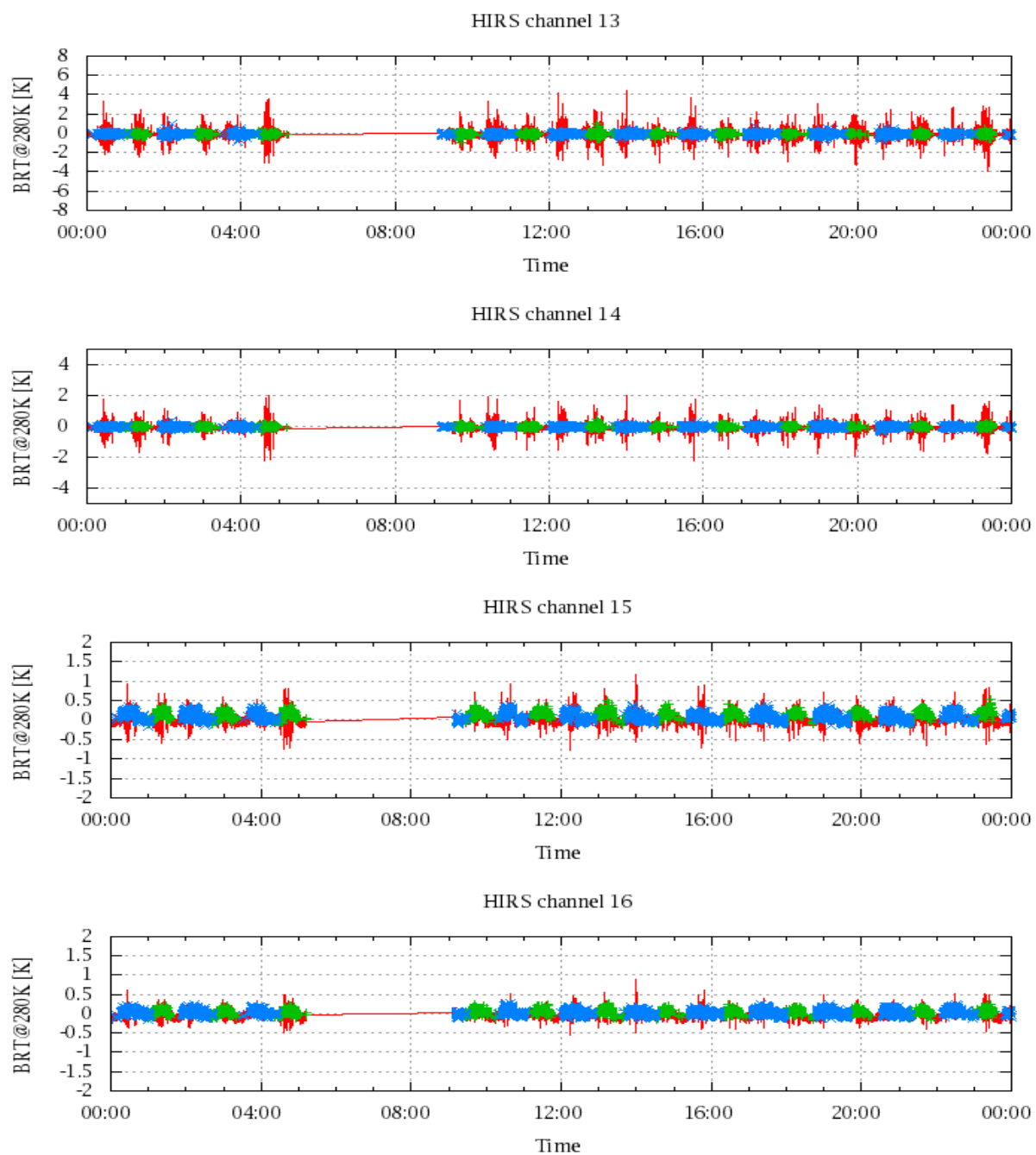


Figure 20: Radiance Differences in BRT

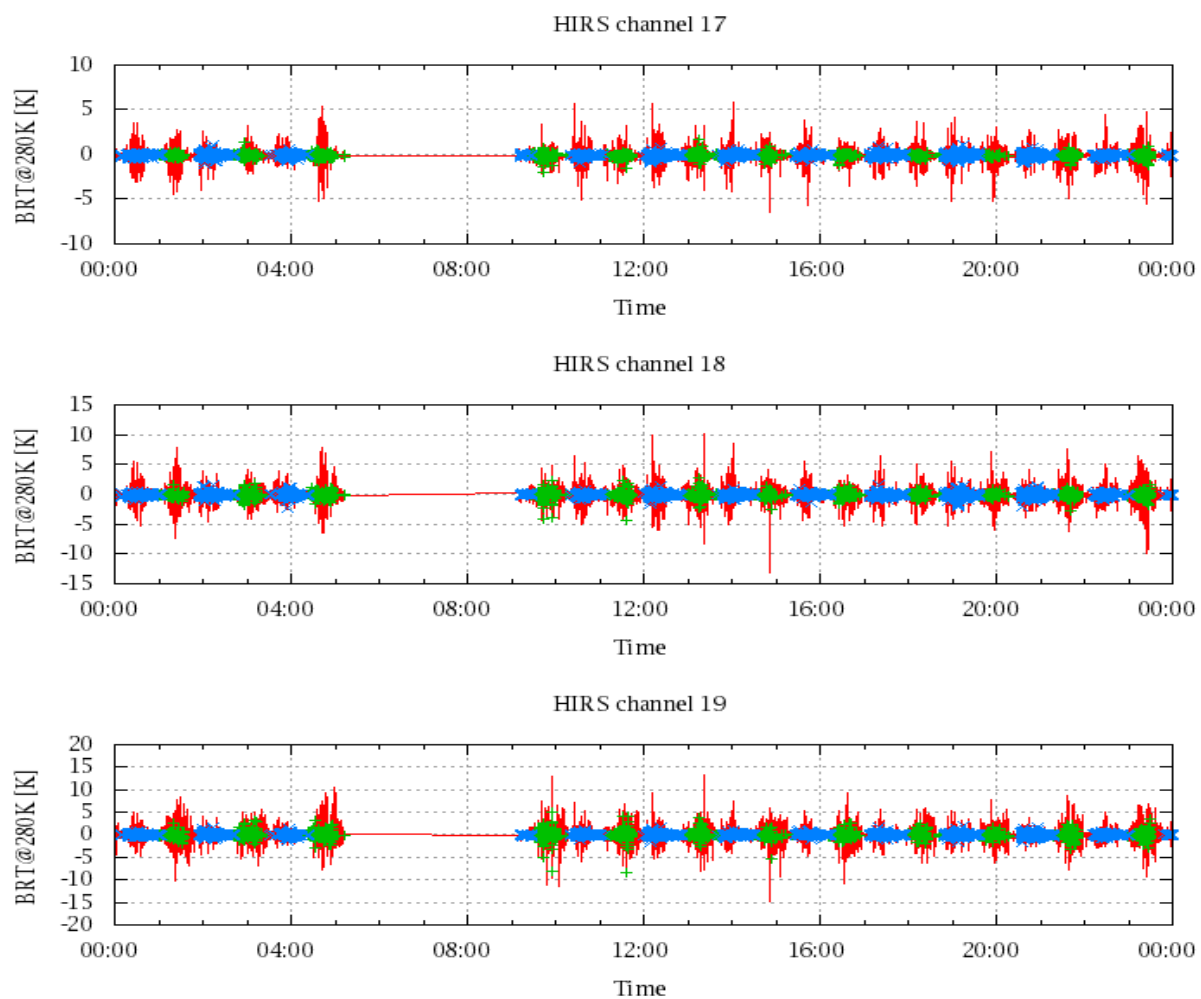


Figure 21: Radinace Differences in BRT