

# IASI L0 and L1 Daily Monitoring Report

IASI monitoring team

17/08/2011 00:00:00 - 18/08/2011 00:00:00

## 1 Introduction

This report provides summary monitoring plots and figures from IASI instrument on the MetOp-A satellite retrieved from the IASI L0 and L1 ENG product (3 minute data packet) for 17/08/2011 00:00:00 - 18/08/2011 00:00:00 .

The monitoring data are extracted on PDU basis.

Data extraction, calibration, processing and statistics are performed at EUMETSAT.

## 2 Data quantity 17/08/2011 00:00:00 - 18/08/2011 00:00:00

Product Type	Number	Action
L0 HKTM PDUs	481	-
L0 IASI PDUs	481	-
L1 ENG PDUs	480	-
L1 ENG distinct GEPSSGranule	481	-
L1 DPX PDUs (RM: IASI-HIRS)	480	-
L1 DPS Files (RM: OBS-CAL NWP based)	480	-

Table 1: Data quantity

APID	Seq from	Seq to	Time from	Time to
PX1 (130)	2519	2610	20110817070059.119	20110817070124.845
PX1 (130)	2628	2631	20110817070128.736	20110817070129.388
PX1 (130)	2631	2634	20110817070129.388	20110817070130.037
PX1 (130)	2634	2637	20110817070130.037	20110817070130.685
PX1 (130)	2637	2639	20110817070130.685	20110817070131.115
PX2 (135)	2519	2610	20110817070059.119	20110817070124.845
PX2 (135)	2628	2631	20110817070128.736	20110817070129.388
PX2 (135)	2631	2633	20110817070129.388	20110817070129.818
PX2 (135)	2635	2637	20110817070130.252	20110817070130.685
PX2 (135)	2637	2640	20110817070130.685	20110817070132.845
PX3 (140)	2519	2610	20110817070059.119	20110817070124.845
PX3 (140)	2626	2628	20110817070128.306	20110817070128.736
PX3 (140)	2628	2631	20110817070128.736	20110817070129.388
PX3 (140)	2631	2634	20110817070129.388	20110817070130.037
PX3 (140)	2638	2640	20110817070130.900	20110817070132.845
PX4 (145)	2519	2610	20110817070059.119	20110817070124.845
PX4 (145)	2625	2628	20110817070128.091	20110817070128.736
PX4 (145)	2629	2631	20110817070128.955	20110817070129.388

Continued on next page

Table 2 – continued from previous page

APID	Seq from	Seq to	Time from	Time to
PX4 (145)	2631	2634	20110817070129.388	20110817070130.037
PX4 (145)	2635	2638	20110817070130.252	20110817070130.900
PX4 (145)	2638	2640	20110817070130.900	20110817070132.845
IMG (150)	2851	2954	20110817070059.119	20110817070123.548
IMG (150)	2973	2983	20110817070128.091	20110817070130.252
IMG (150)	2983	2986	20110817070130.252	20110817070130.900
IMG (150)	2986	2988	20110817070130.900	20110817070131.548
VER (160)	416	433	20110817070059.119	20110817070059.119
VER (160)	434	439	20110817070059.119	20110817070131.115
AUX (180)	82	86	20110817070051.549	20110817070123.548

Table 2: L0 data gaps

### 3 Instrument modes

Time	Transition from	Transition to
17/08/2011 00:00:06	-	Normal operation

Table 3: Instrument modes

### 4 L0 and L1 Data Quality

Flag	Value	Action
L0 IASI PDUs	481	-
L1 ENG PDUs	480	-
L1 ENG distinct GEPSGranule	481	-
GQisFlagQual set (PX1)	99.30 %	-
GQisFlagQual set (PX2)	99.13 %	-
GQisFlagQual set (PX3)	99.20 %	-
GQisFlagQual set (PX4)	99.33 %	-
GQisFlagQual set (all)	99.24 %	-

Table 4: Quality flags

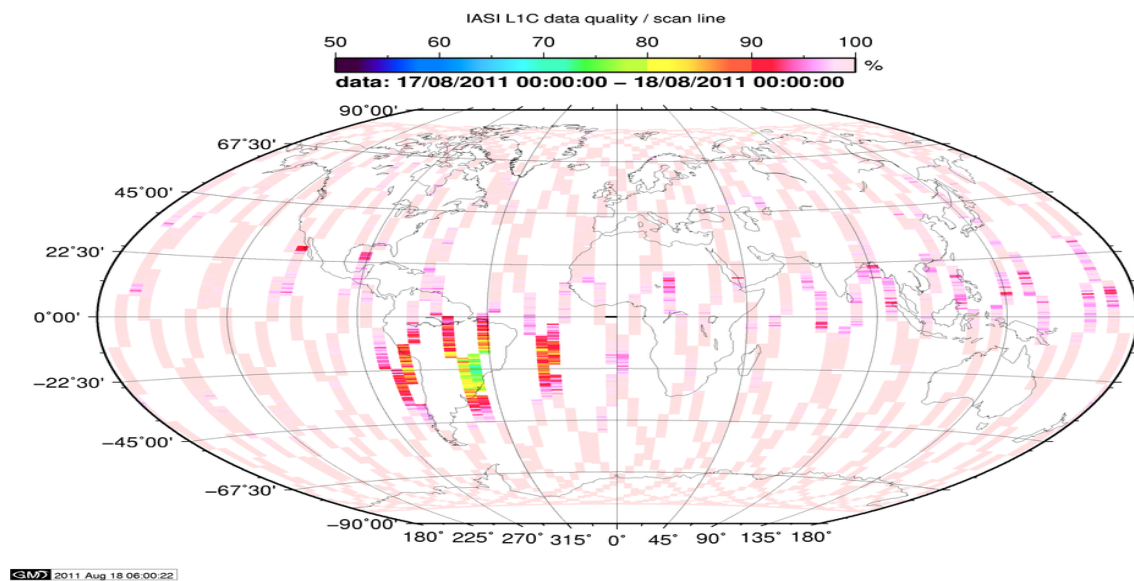


Figure 1: L1C data quality

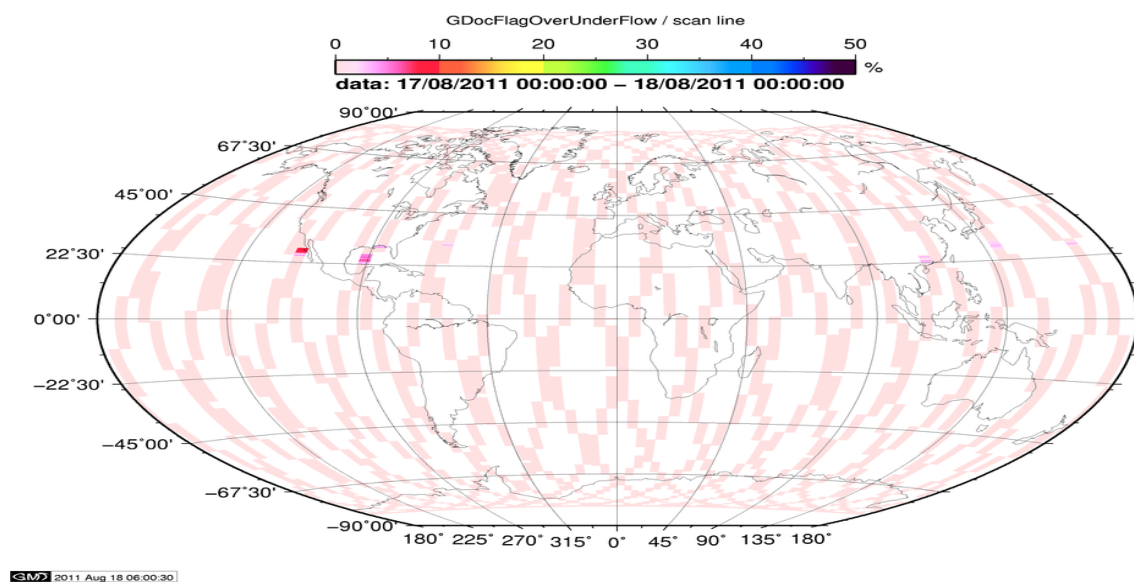


Figure 2: Flag of Over and Under Flows

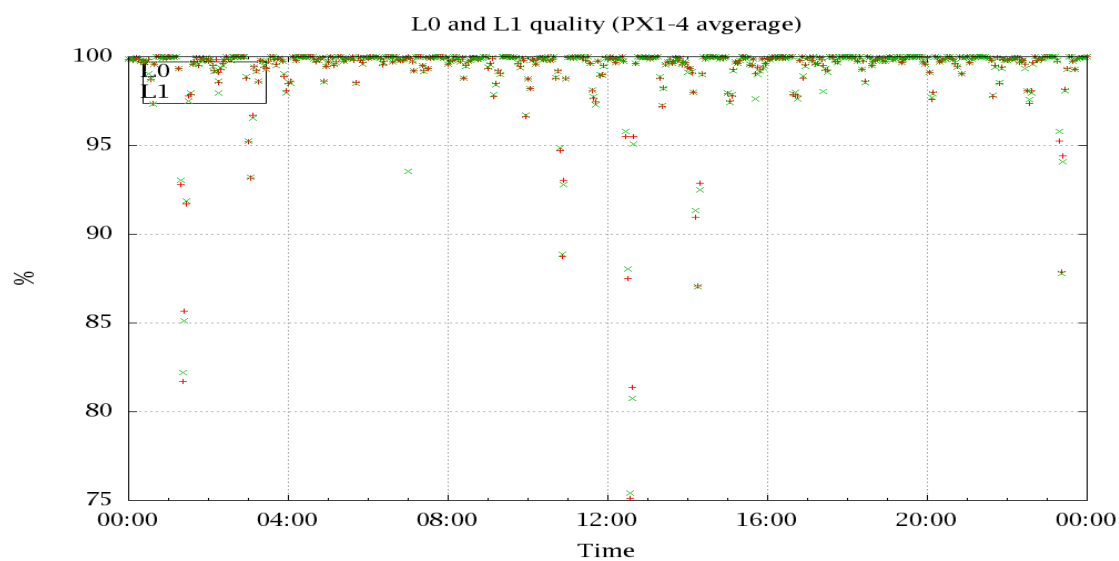


Figure 3: Level 0 and 1C overall quality

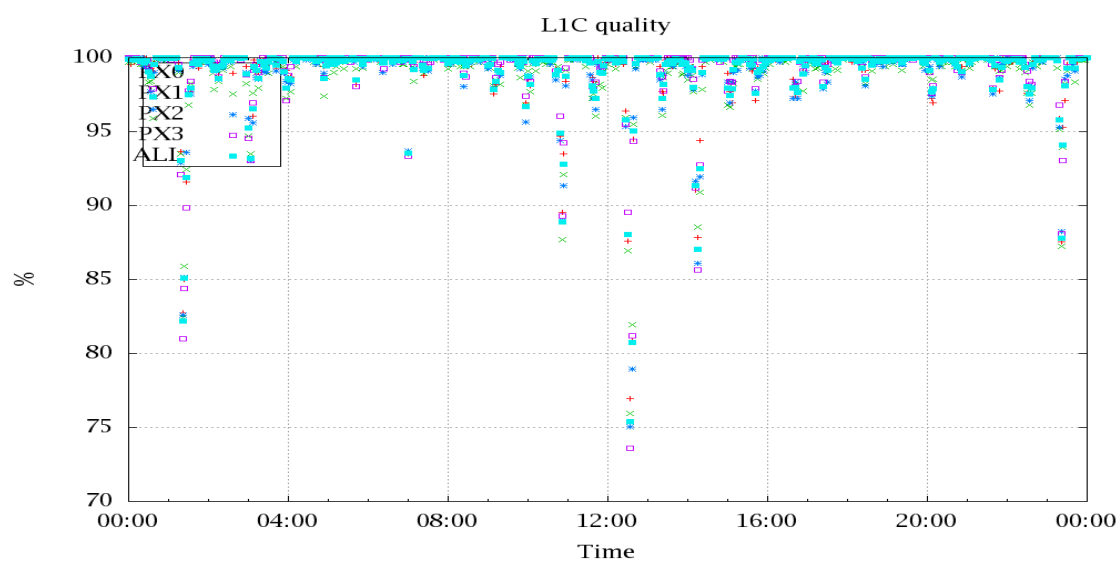


Figure 4: Level 1C quality

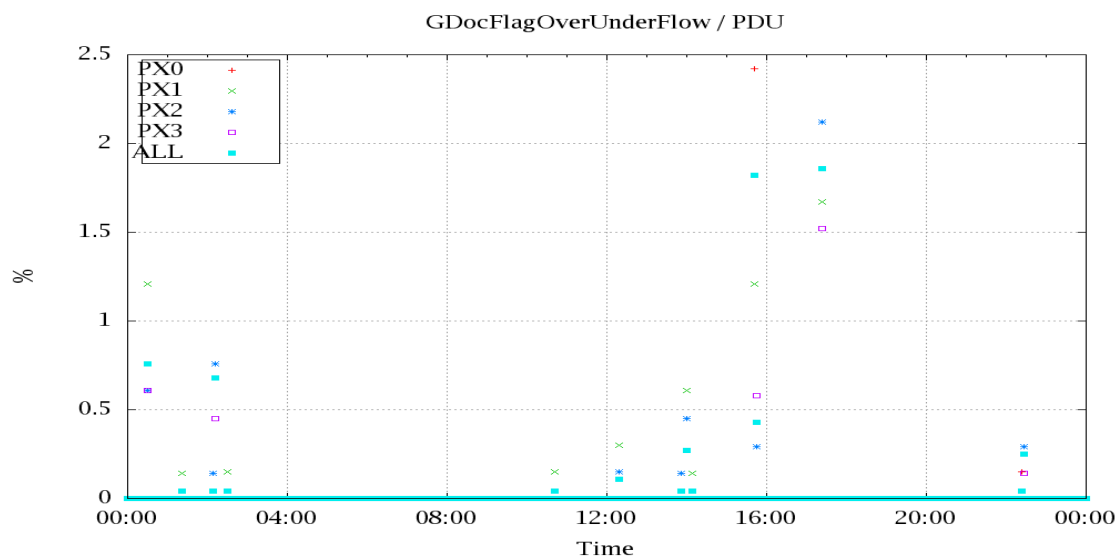


Figure 5: OverUnderFlowFlag timeseries

## 5 Radiance monitoring based on NWP

The radiance monitoring compares the IASI measurements (L1C-eps-products) obtained under clear sky situation over sea with modeled radiances. Cloud identification is based on cloud flag of co-located AVHRR L1B data in addition to information from the IASI L1C clustering analysis here only homogenous situations are taken into account (99.0 percent in first class). A radiative transfer model (RTM) is feed with co-located ECMWF profiles of T,WV, and Ozon. Between March 2007 and the 18th of May 2010 RTIASI in Version 4.0 is used. After that date the RTTOV model in V9.3 is used. Information about the SST is obtained from the AVHRR L1B or taken from AVHRR scenes analysis (CGS only). In the following figures 10 to 16 the so-called radiance anomaly is shown. The radiance anomaly is defined as the difference between the quarter daily radiance average OBS-CAL (over all pixel and scan position 10 to 20) and the average bias OBS-CAL (over all pixel and scan position 10 to 20) of the last 30 days.

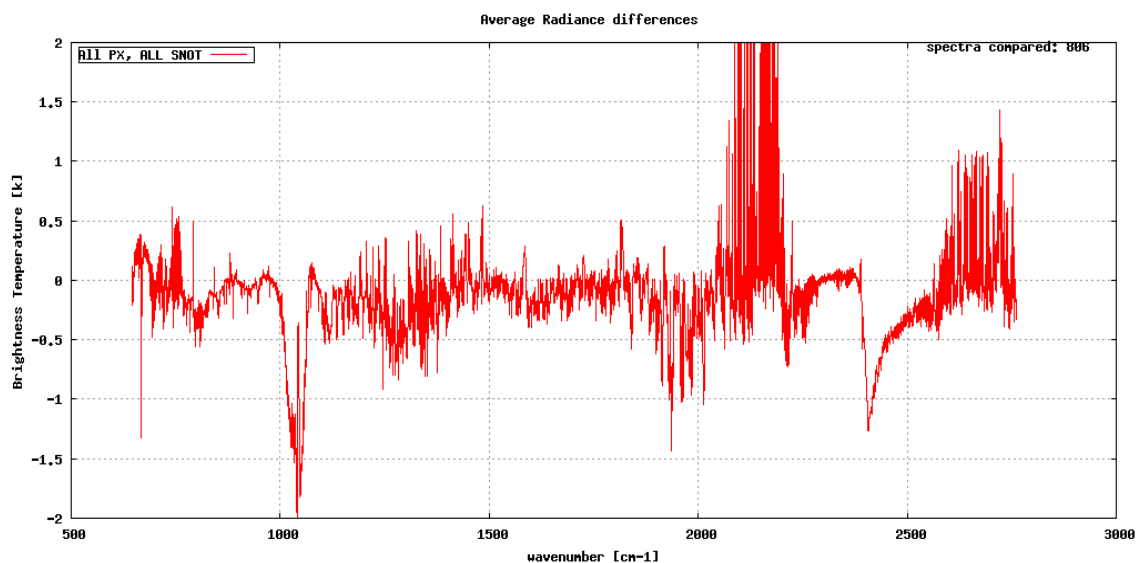


Figure 6: Average Radiance differences: OBS-CAL

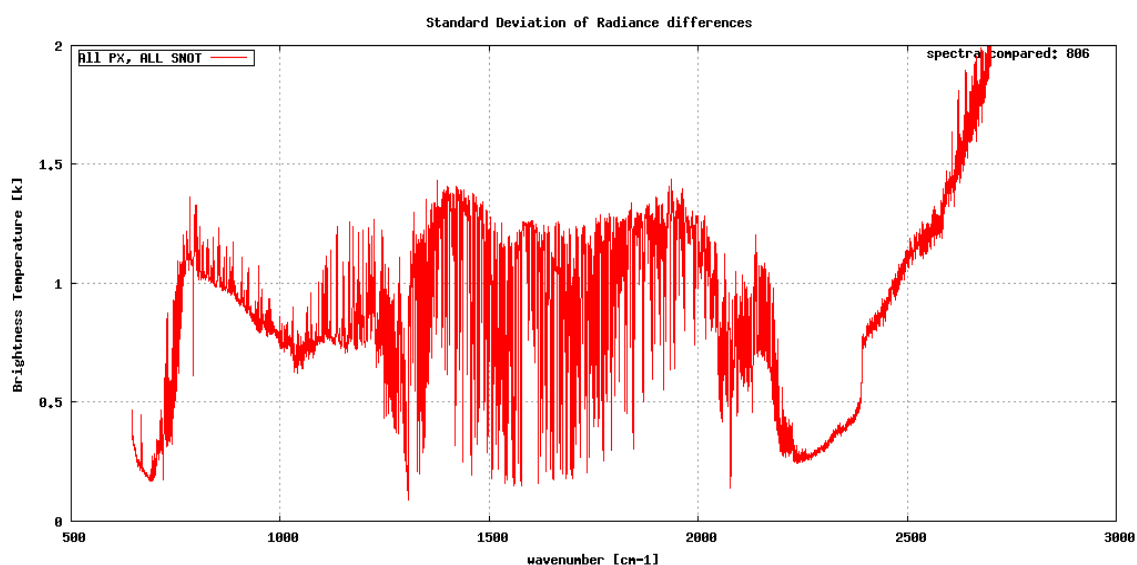


Figure 7: Standard Deviation of Radiance differences

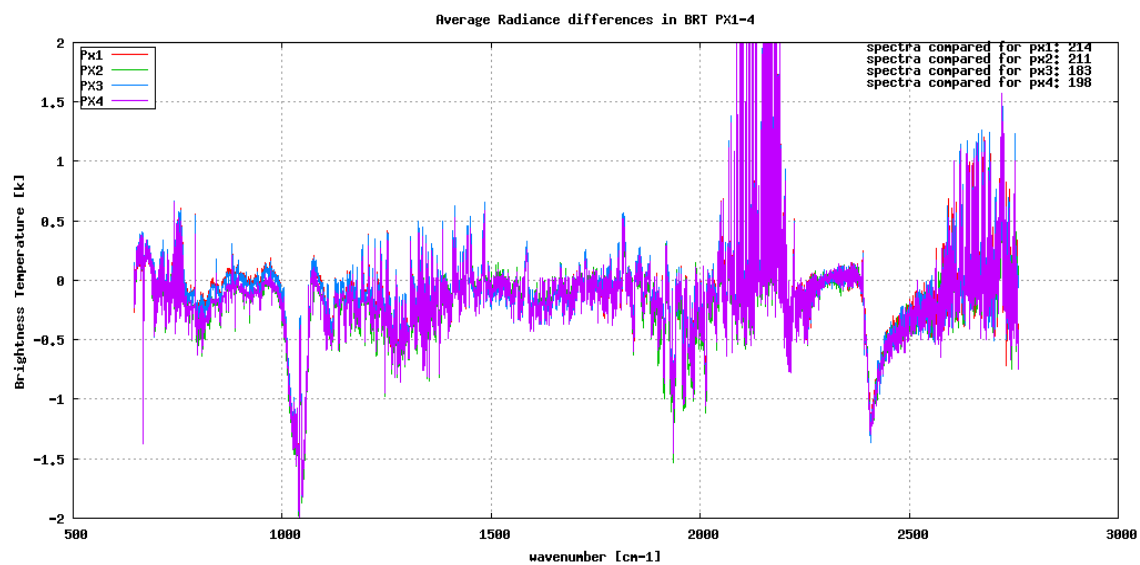


Figure 8: Average Radiance differences: OBS-CAL

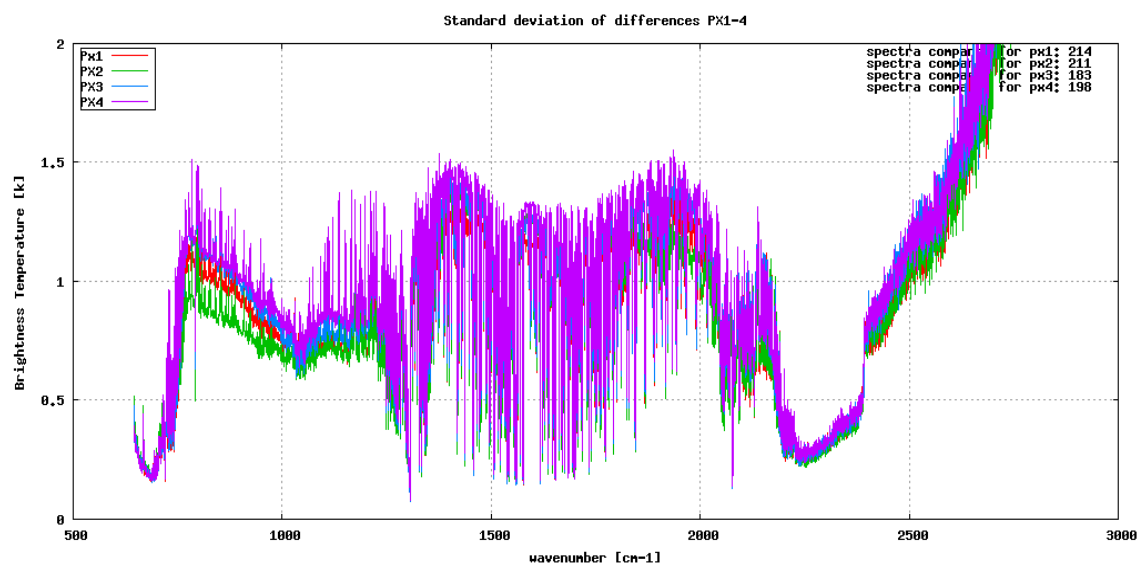


Figure 9: Standard Deviation of Radiance differences



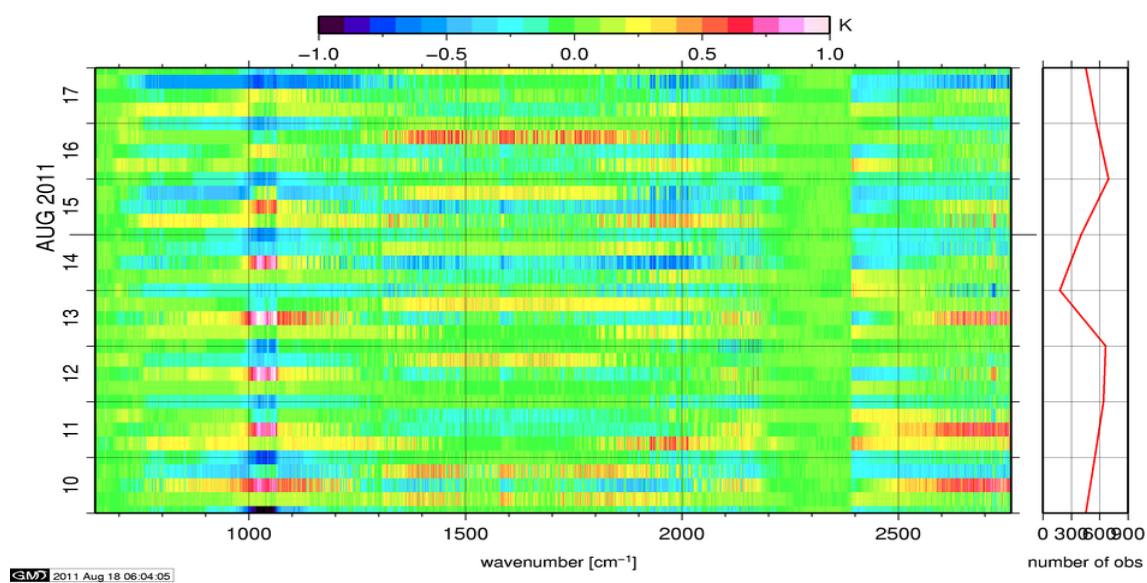


Figure 10: Radiance Anomaly in BRT: All Channels

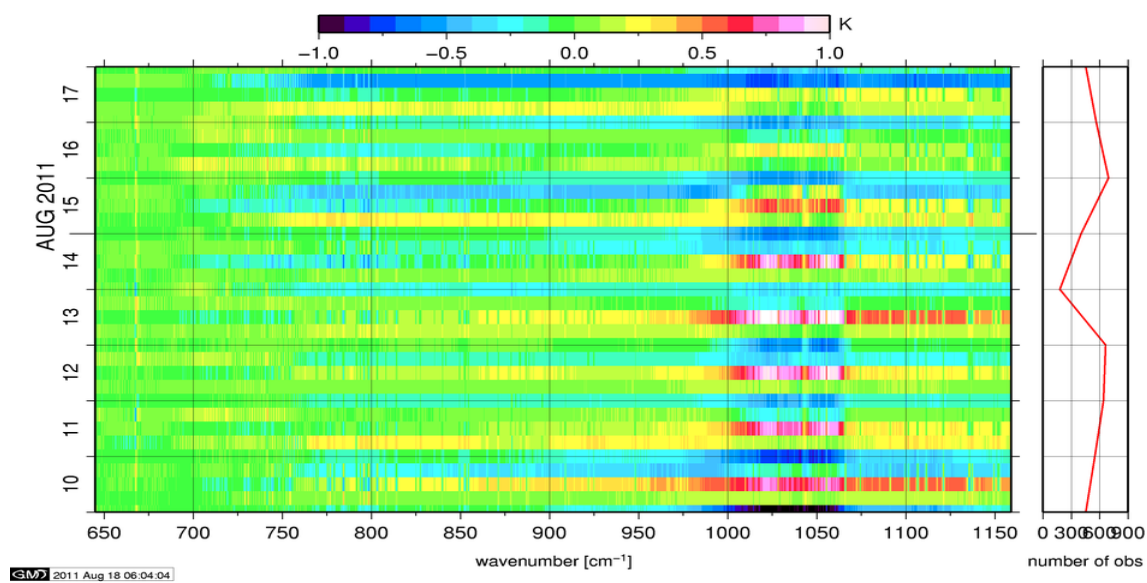


Figure 11: Radiance Anomaly in BRT: IASI Band 1

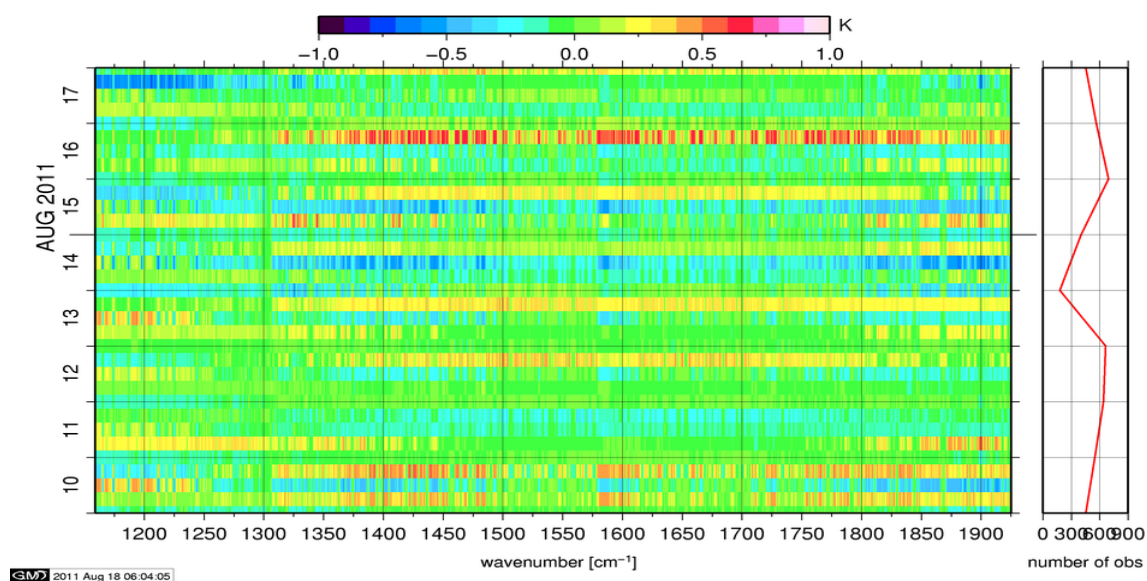


Figure 12: Radiance Anomaly in BRT: IASI Band 2

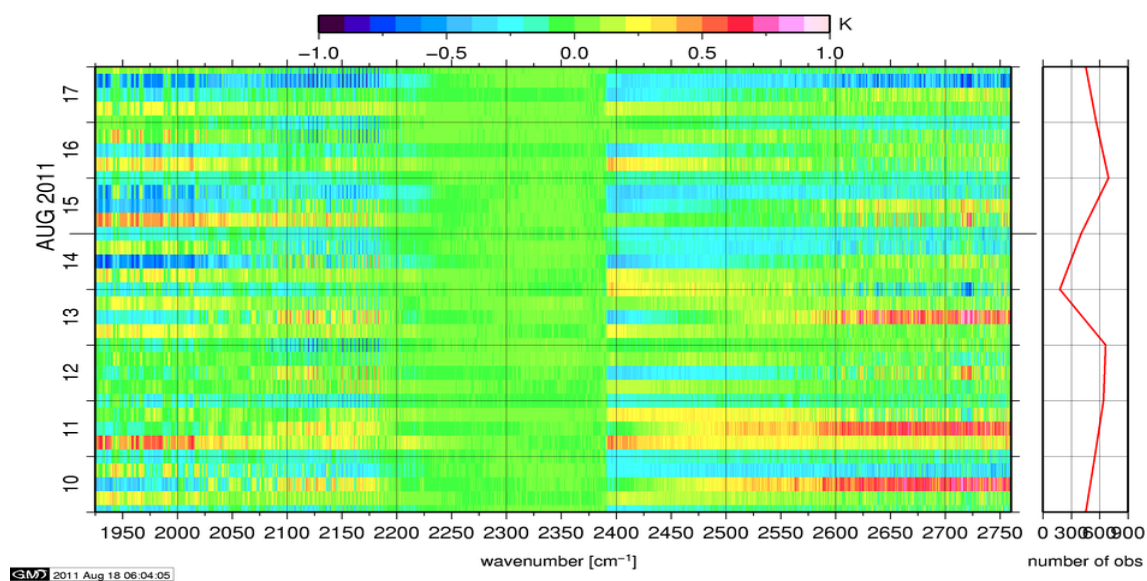


Figure 13: Radiance Anomaly in BRT: IASI Band 3

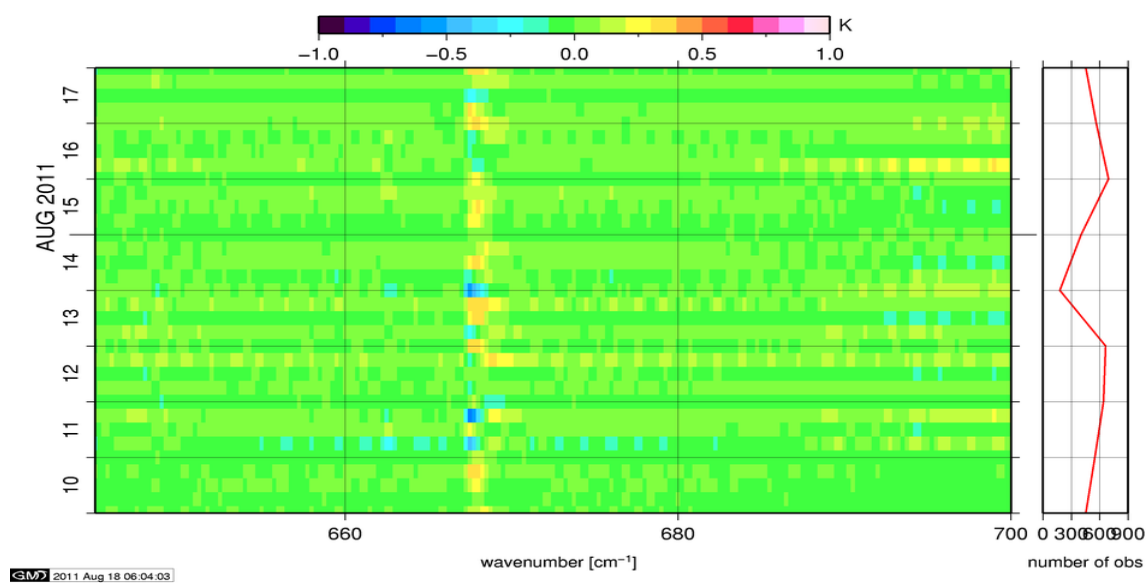


Figure 14: Radiance Anomaly in BRT: CO2 14

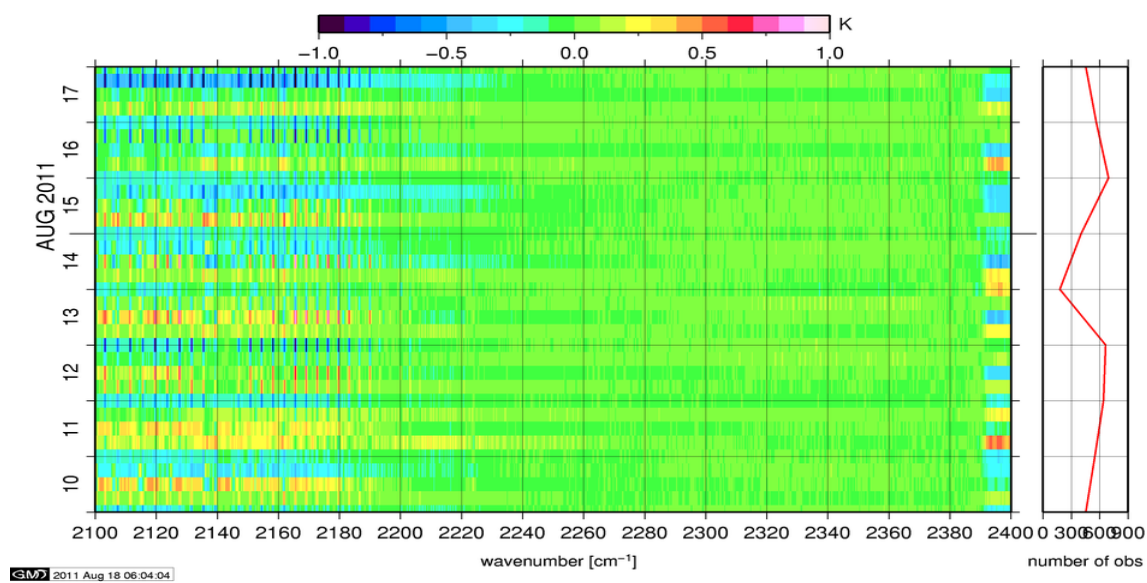


Figure 15: Radiance Anomaly in BRT: CO2 4.3

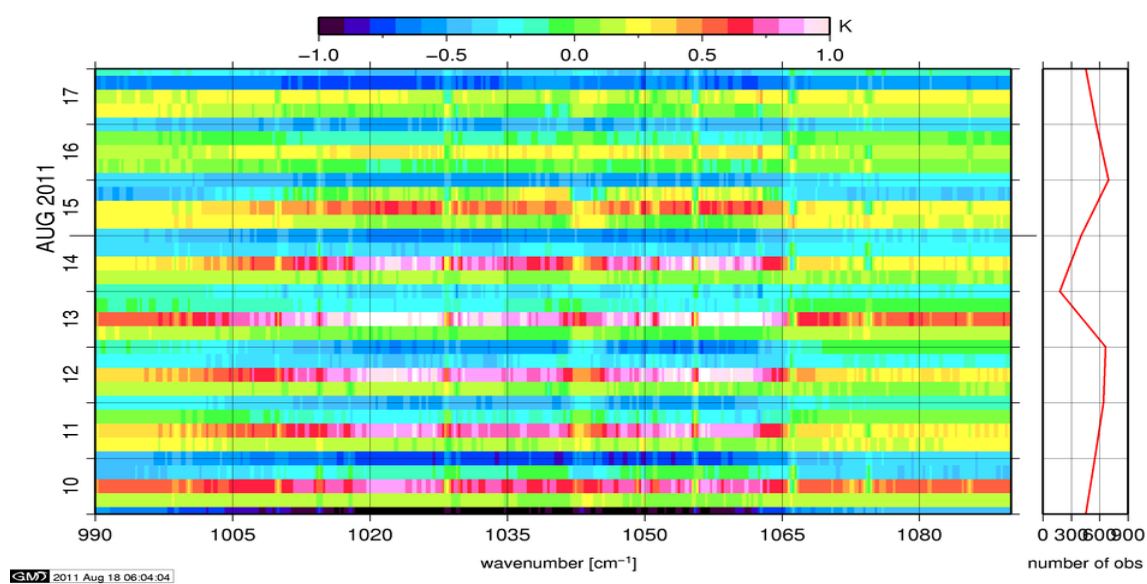


Figure 16: Radiance Anomaly in BRT: O3

## 6 IASI-HIRS radiance comparison Channel 1-19

The radiance comparison of IASI and HIRS/4 on-board MetOp is performed on all pixel with distances smaller than 3 km between IASI and HIRS. All sky conditions are covered. The radiance differences IASI - HIRS are given in brightness temperatures at 280K reference temperature. All conditions (clear, cloudy, day and night) are given in red in the following figures. The clear sky conditions at night are given in green and the clear sky cases during daylight are displayed in blue.

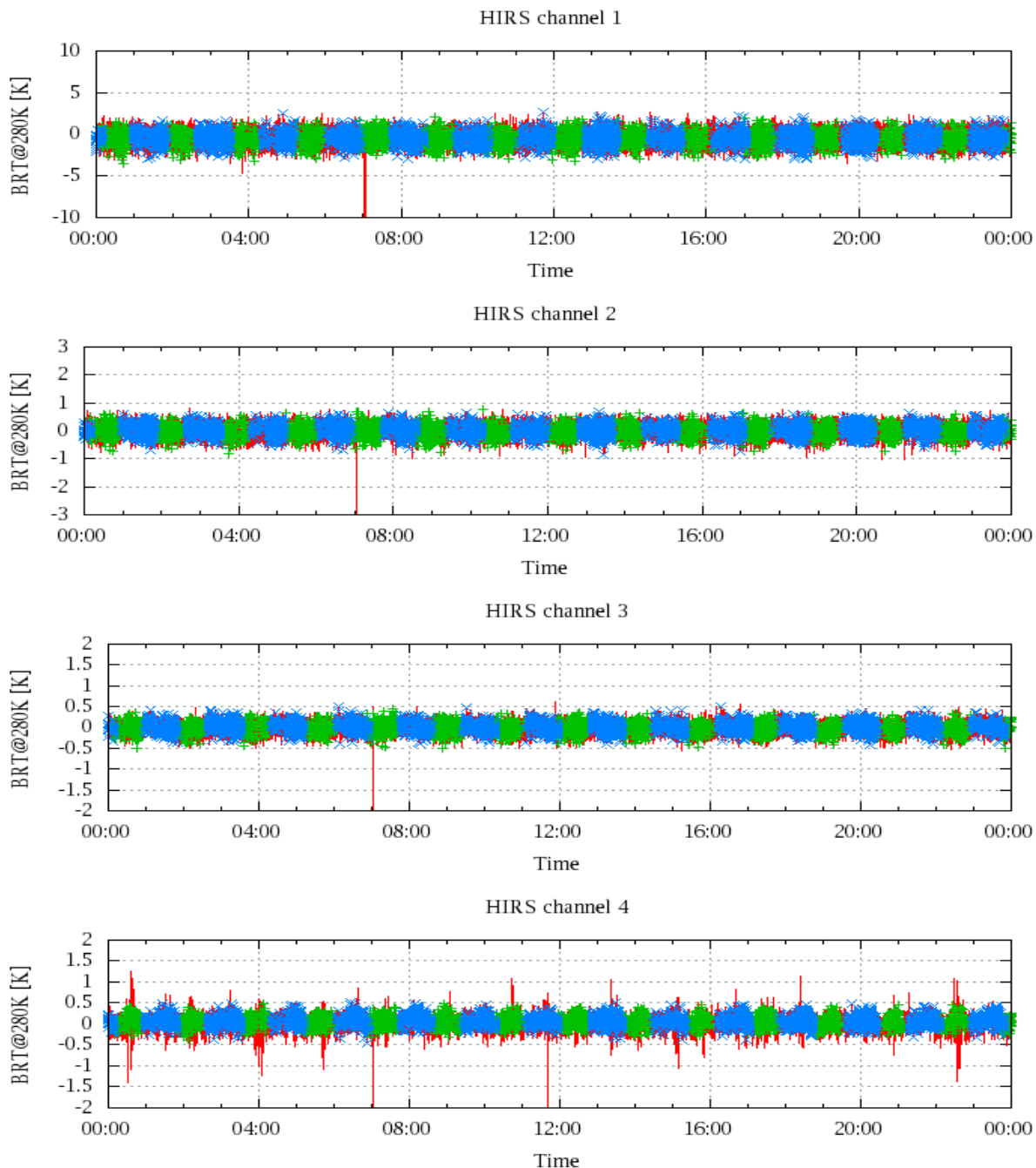


Figure 17: Radiance Differences in BRT

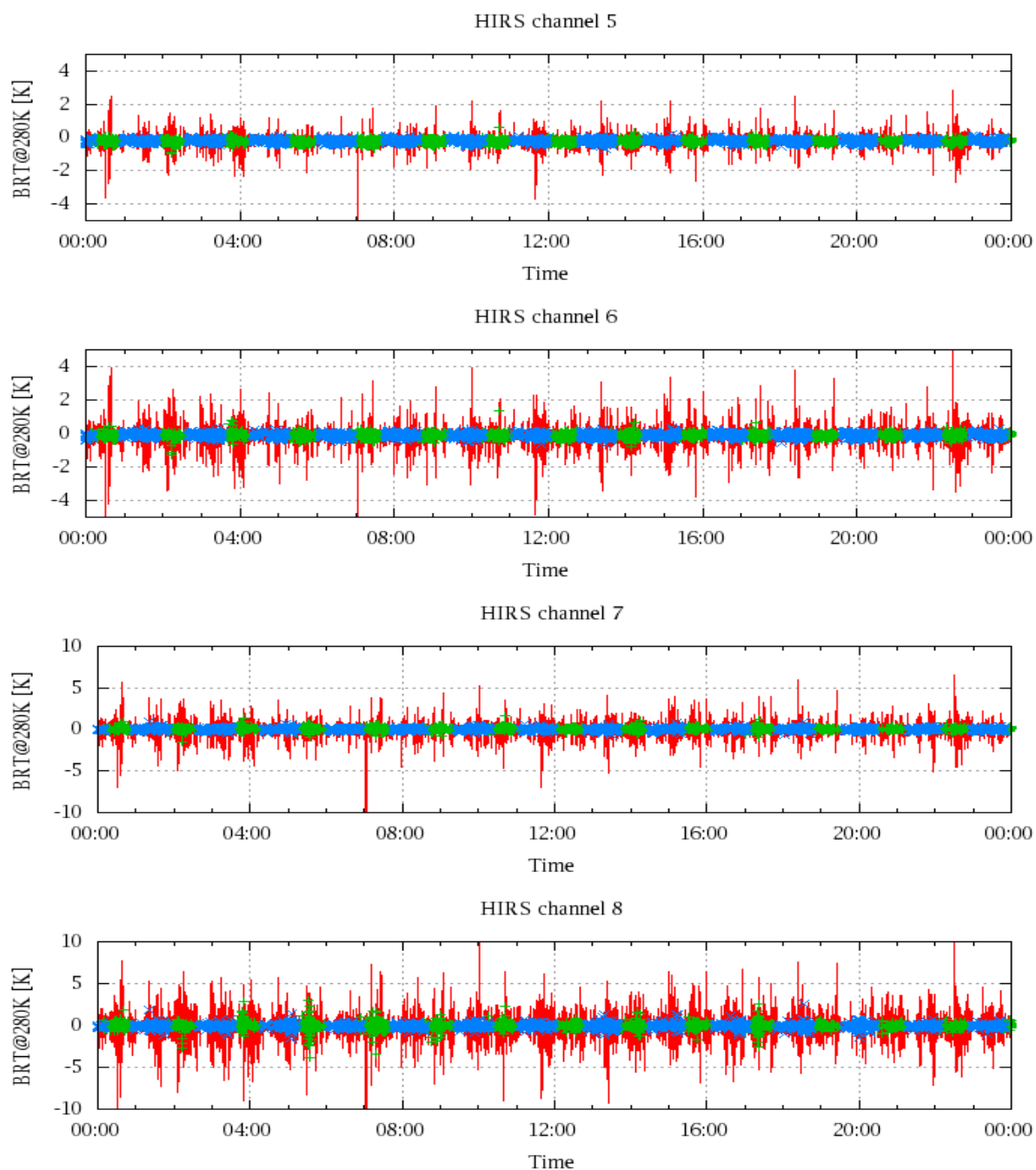


Figure 18: Radiance Differences in BRT

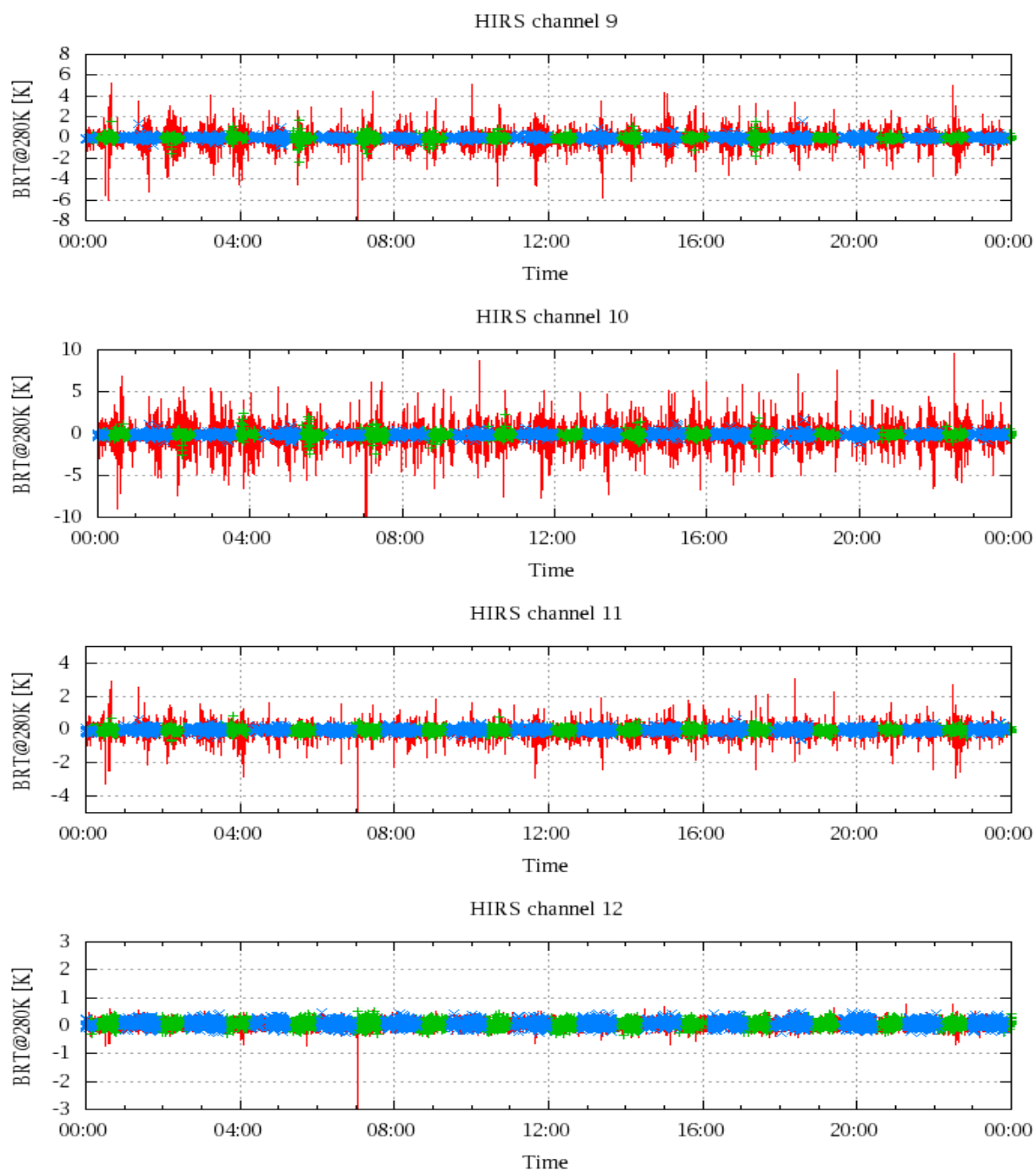


Figure 19: Radiance Differences in BRT

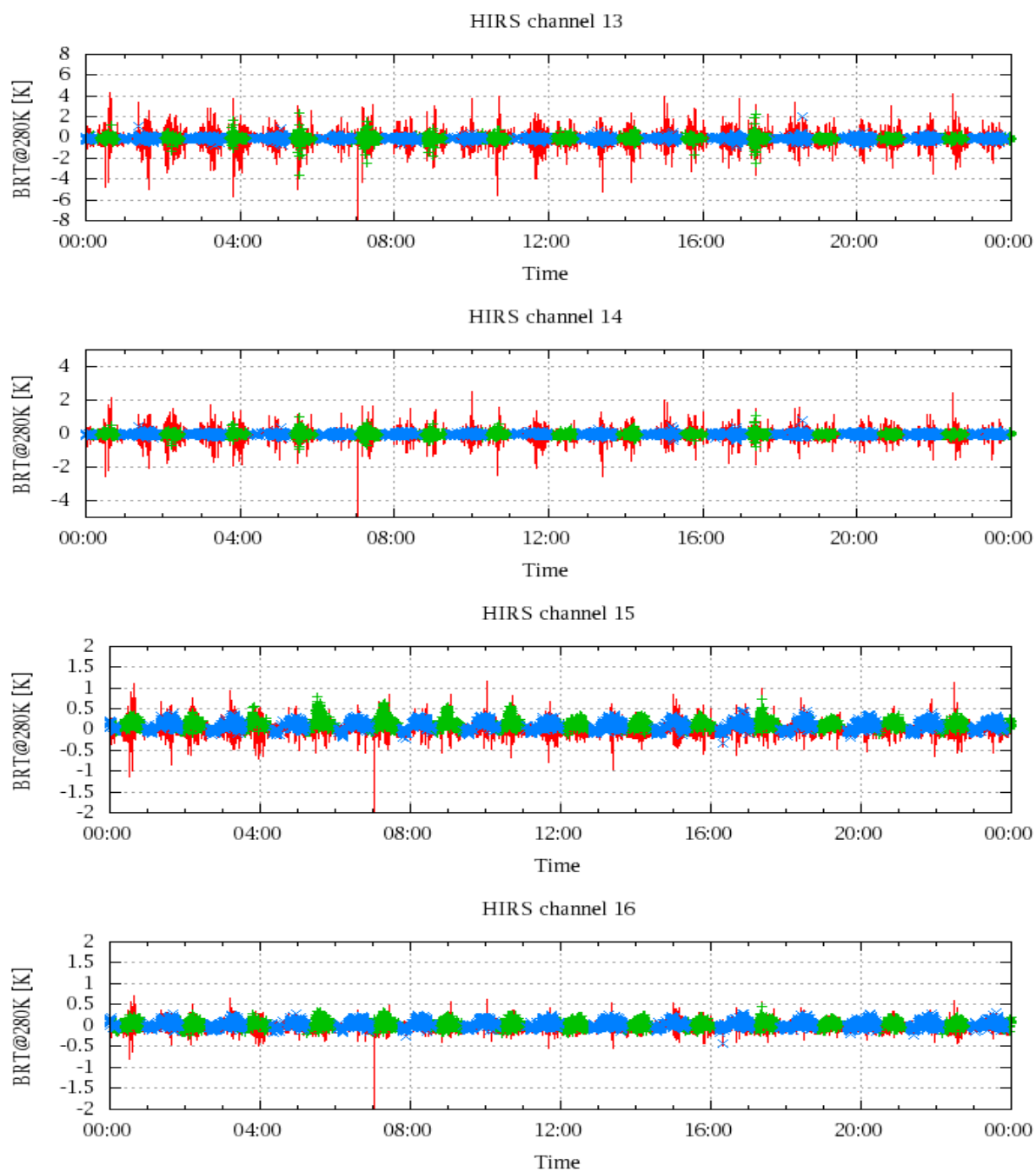


Figure 20: Radiance Differences in BRT



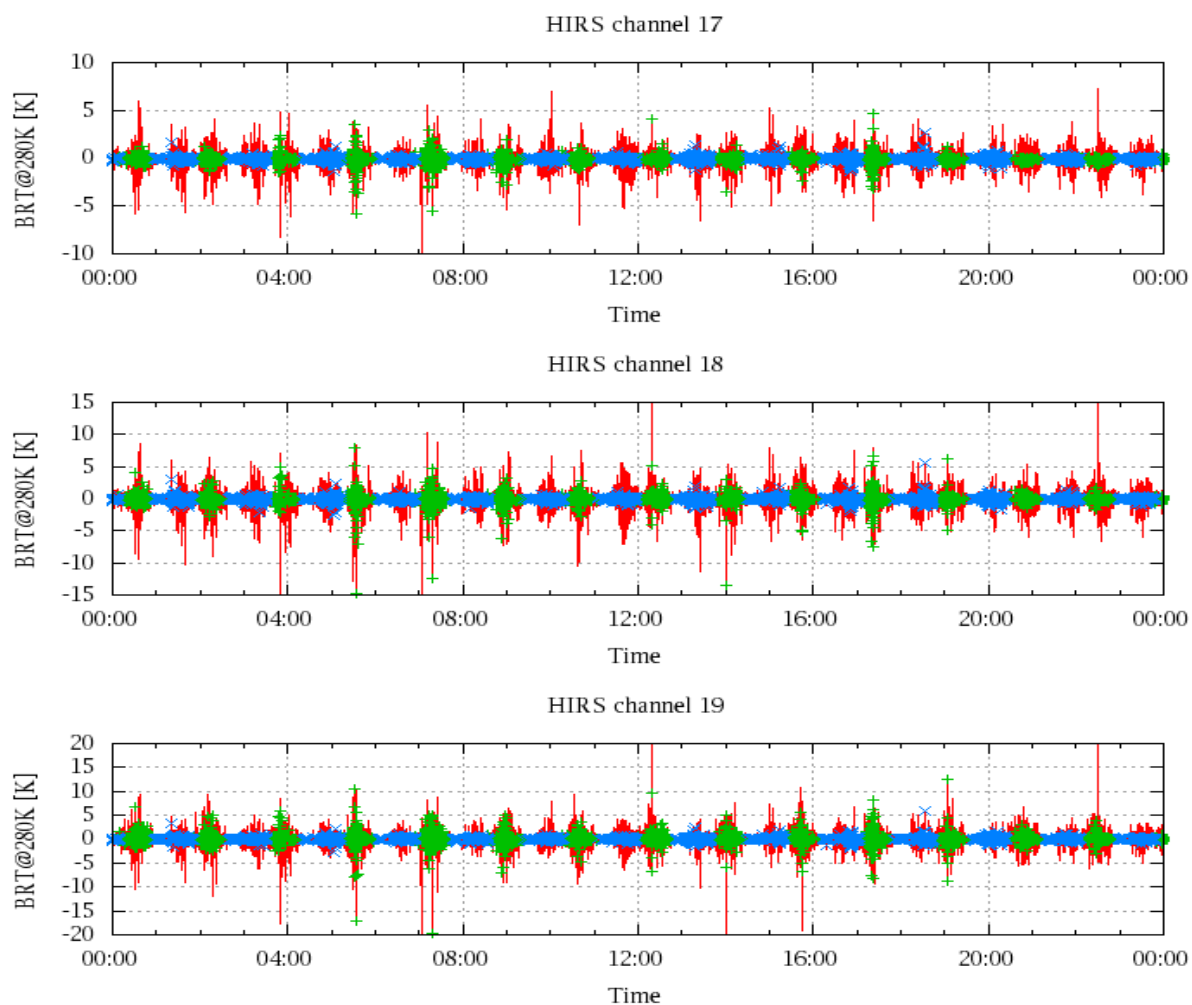


Figure 21: Radinace Differences in BRT