

IASI L0 and L1 Daily Monitoring Report

IASI monitoring team

25/06/2011 00:00:00 - 26/06/2011 00:00:00

1 Introduction

This report provides summary monitoring plots and figures from IASI instrument on the MetOp-A satellite retrieved from the IASI L0 and L1 ENG product (3 minute data packet) for 25/06/2011 00:00:00 - 26/06/2011 00:00:00 .

The monitoring data are extracted on PDU basis.

Data extraction, calibration, processing and statistics are performed at EUMETSAT.

2 Data quantity 25/06/2011 00:00:00 - 26/06/2011 00:00:00

Product Type	Number	Action
L0 HKTM PDUs	481	-
L0 IASI PDUs	481	-
L1 ENG PDUs	481	-
L1 ENG distinct GEPSGranule	480	-
L1 DPX PDUs (RM: IASI-HIRS)	481	-
L1 DPS Files (RM: OBS-CAL NWP based)	481	-

Table 1: Data quantity

APID	Seq from	Seq to	Time from	Time to
PX1 (130)	14631	14633	20110625021028.525	20110625021028.959
PX1 (130)	15080	15082	20110625021228.306	20110625021228.740
PX1 (130)	15089	15091	20110625021230.252	20110625021232.197
PX2 (135)	14629	14631	20110625021028.096	20110625021028.525
PX2 (135)	15082	15084	20110625021228.740	20110625021229.170
PX2 (135)	15084	15086	20110625021229.170	20110625021229.603
PX3 (140)	14630	14633	20110625021028.311	20110625021028.959
PX3 (140)	15083	15085	20110625021228.955	20110625021229.388
PX3 (140)	15085	15087	20110625021229.388	20110625021229.822
PX4 (145)	14630	14632	20110625021028.311	20110625021028.744
PX4 (145)	15079	15081	20110625021228.091	20110625021228.525
PX4 (145)	15084	15087	20110625021229.170	20110625021229.822
IMG (150)	11810	11812	20110625021028.311	20110625021028.744
IMG (150)	11813	11815	20110625021028.959	20110625021029.393
IMG (150)	12324	12326	20110625021229.170	20110625021229.603
VER (160)	-	-	-	-
AUX (180)	-	-	-	-

Table 2: L0 data gaps

3 Instrument modes

Time	Transition from	Transition to
25/06/2011 00:00:01	-	Normal operation

Table 3: Instrument modes

4 L0 and L1 Data Quality

Flag	Value	Action
L0 IASI PDUs	481	-
L1 ENG PDUs	481	-
L1 ENG distinct GEPSGranule	480	-
GQisFlagQual set (PX1)	99.26 %	-
GQisFlagQual set (PX2)	99.09 %	-
GQisFlagQual set (PX3)	99.19 %	-
GQisFlagQual set (PX4)	99.32 %	-
GQisFlagQual set (all)	99.22 %	-

Table 4: Quality flags

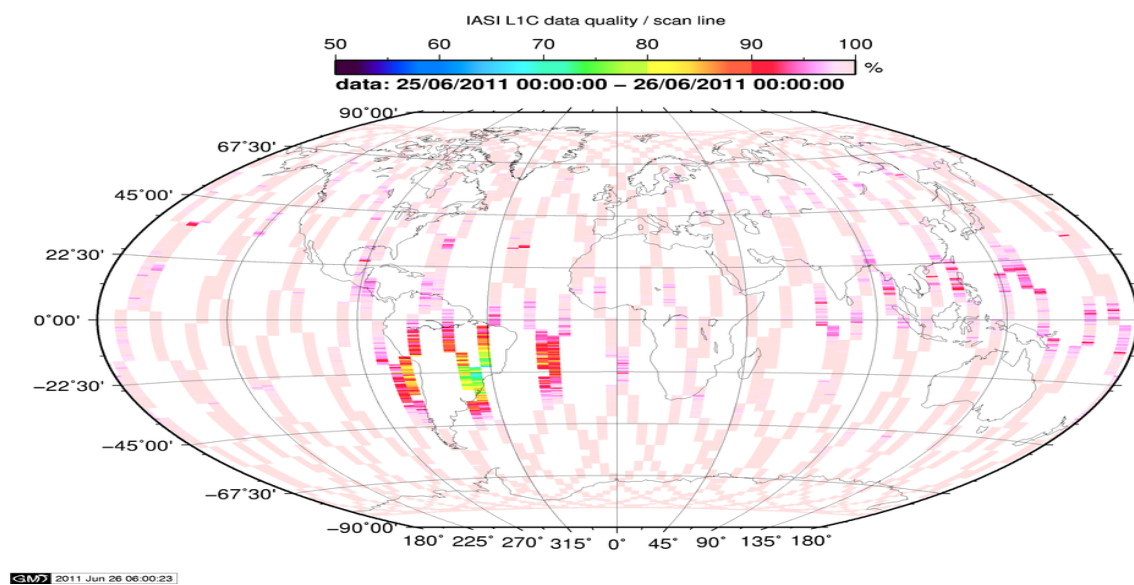


Figure 1: L1C data quality

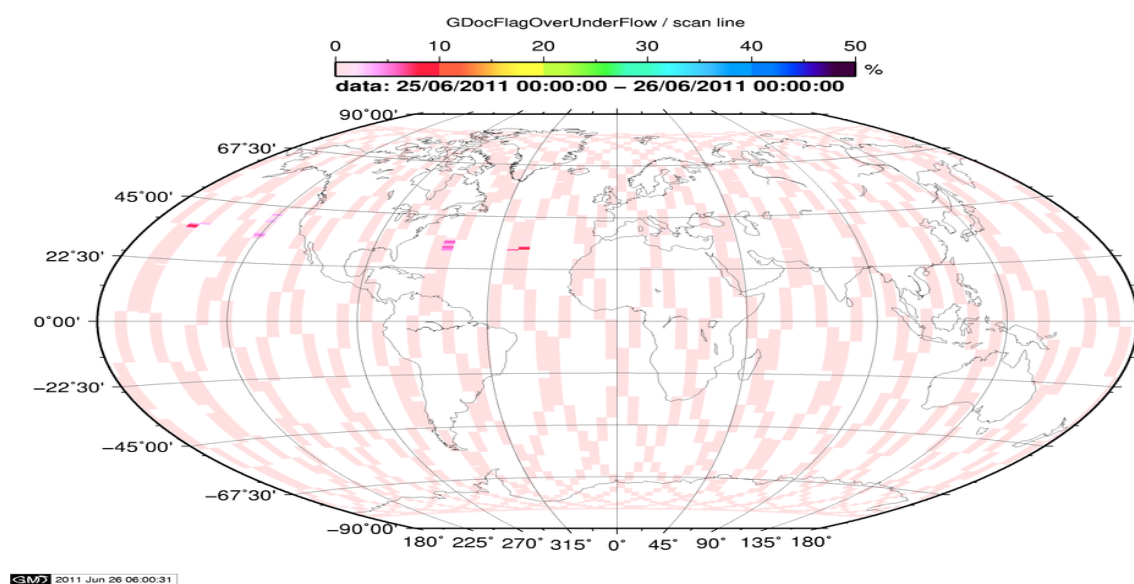


Figure 2: Flag of Over and Under Flows

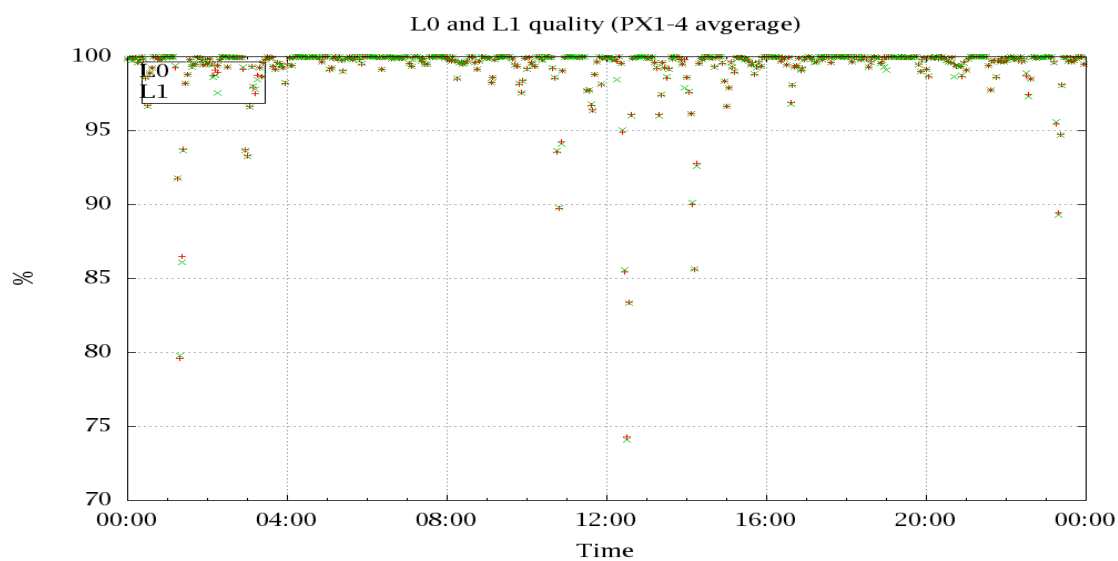


Figure 3: Level 0 and 1C overall quality

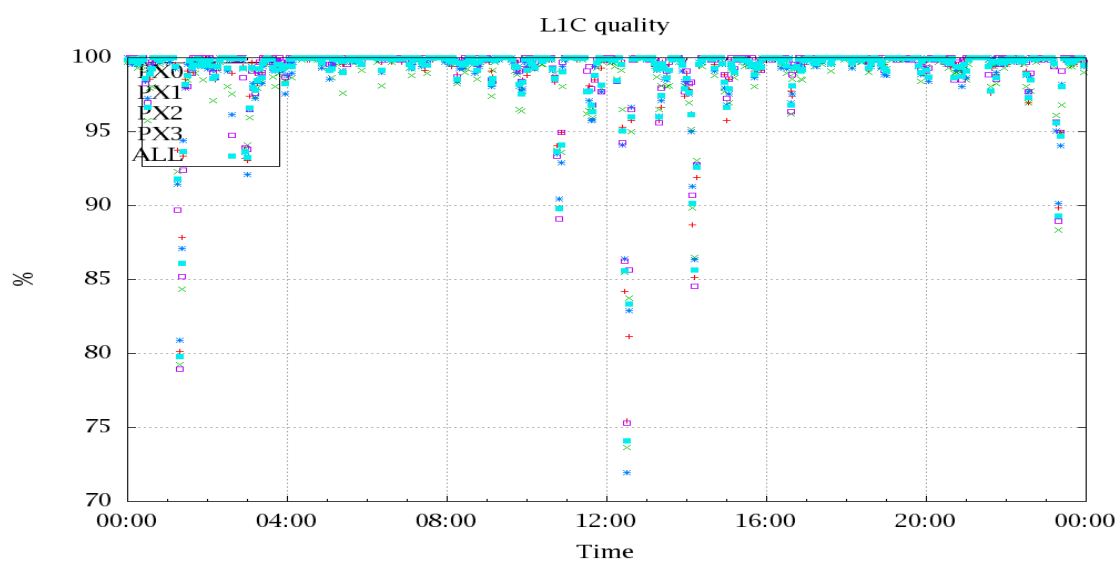


Figure 4: Level 1C quality

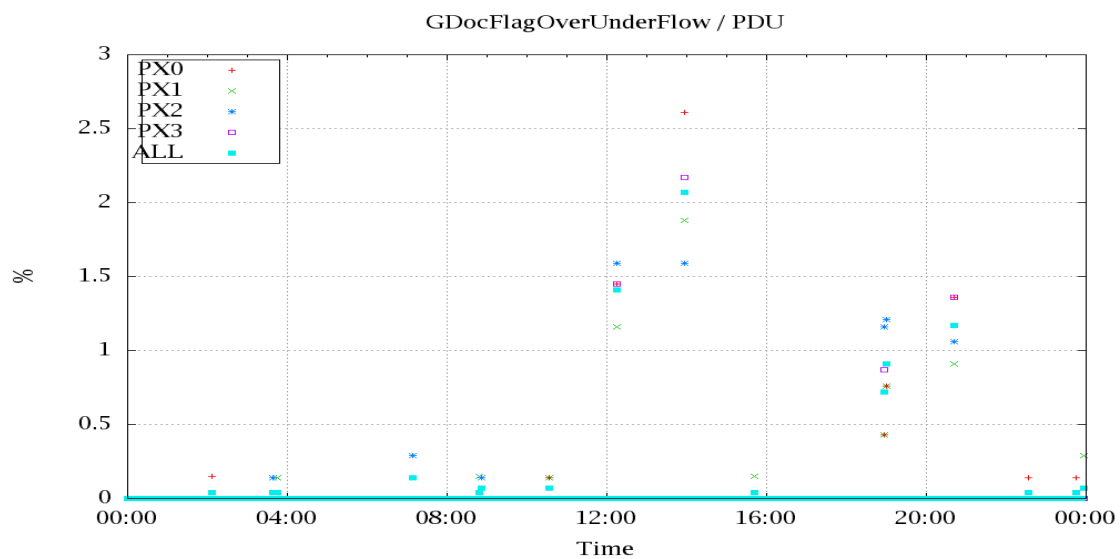


Figure 5: OverUnderFlowFlag timeseries

5 Radiance monitoring based on NWP

The radiance monitoring compares the IASI measurements (L1C-eps-products) obtained under clear sky situation over sea with modeled radiances. Cloud identification is based on cloud flag of co-located AVHRR L1B data in addition to information from the IASI L1C clustering analysis here only homogenous situations are taken into account (99.0 percent in first class). A radiative transfer model (RTM) is feed with co-located ECMWF profiles of T,WV, and Ozon. Between March 2007 and the 18th of May 2010 RTIASI in Version 4.0 is used. After that date the RTTOV model in V9.3 is used. Information about the SST is obtained from the AVHRR L1B or taken from AVHRR scenes analysis (CGS only). In the following figures 10 to 16 the so-called radiance anomaly is shown. The radiance anomaly is defined as the difference between the quarter daily radiance average OBS-CAL (over all pixel and scan position 10 to 20) and the average bias OBS-CAL (over all pixel and scan position 10 to 20) of the last 30 days.

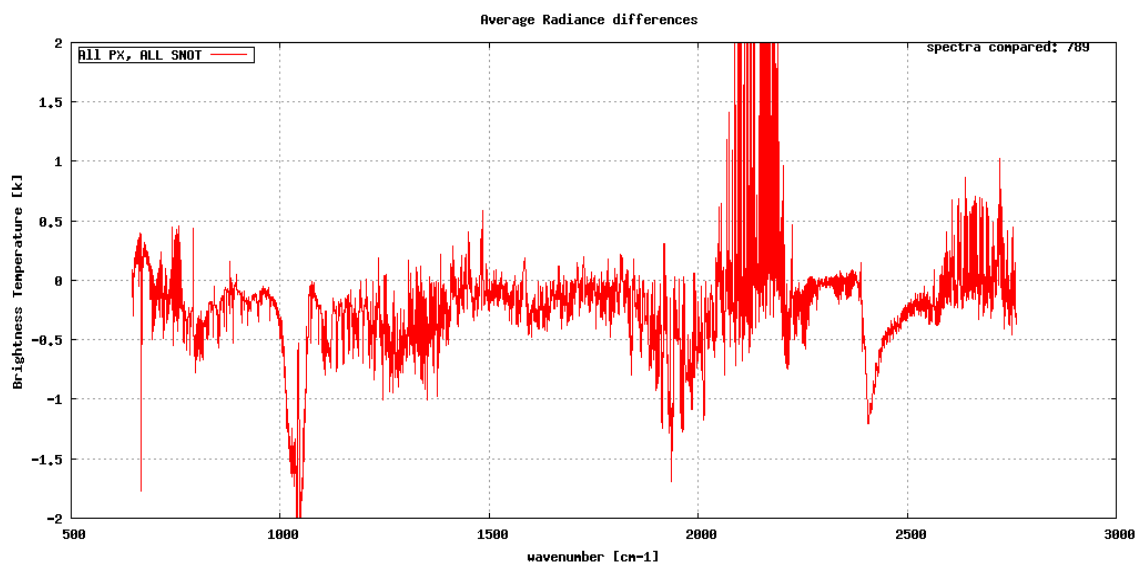


Figure 6: Average Radiance differences: OBS-CAL

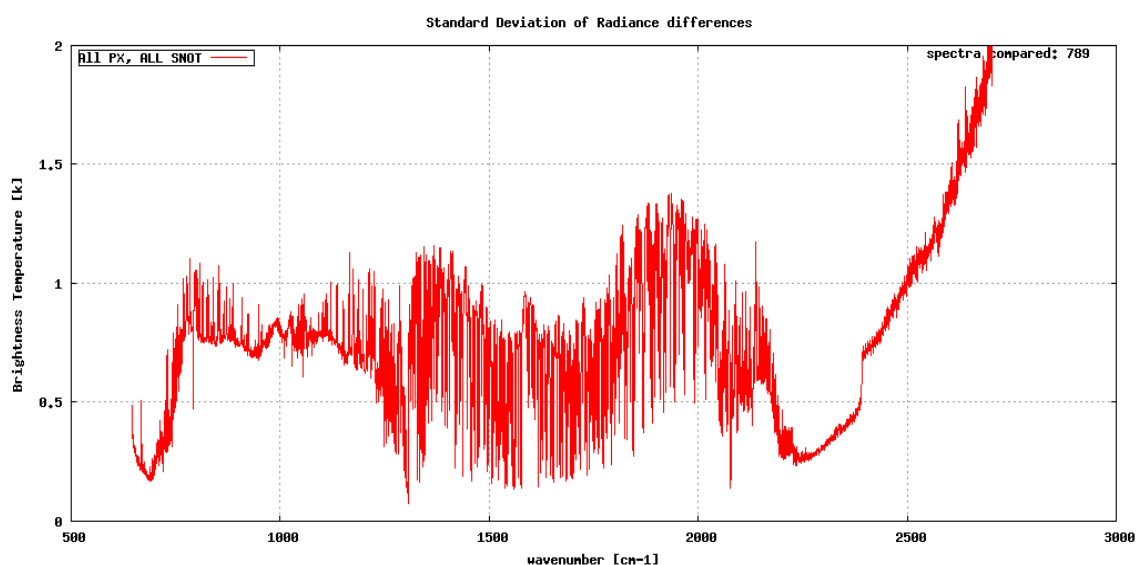


Figure 7: Standard Deviation of Radiance differences

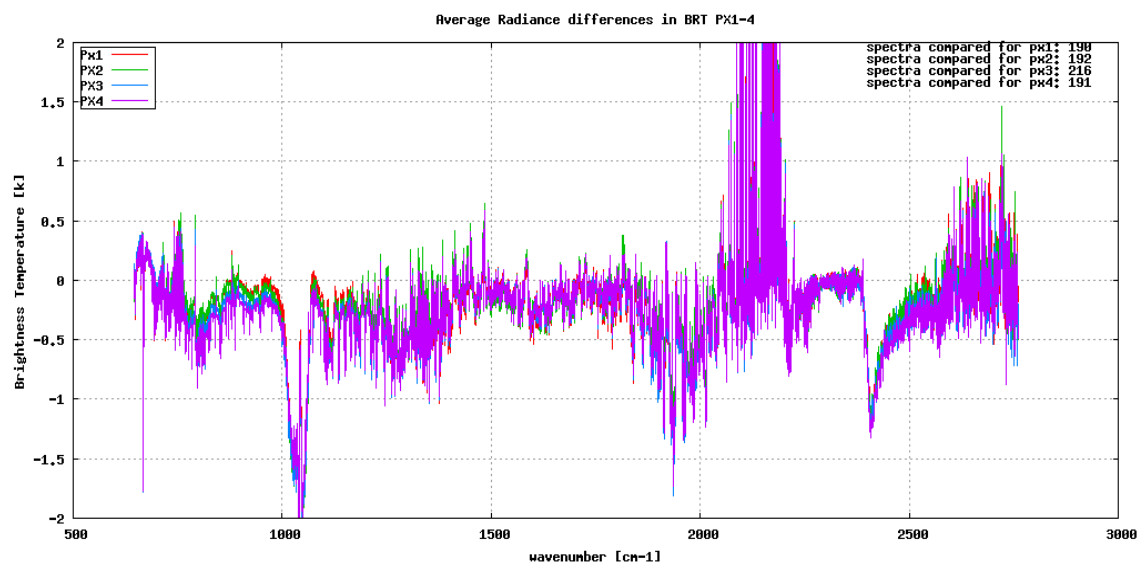


Figure 8: Average Radiance differences: OBS-CAL

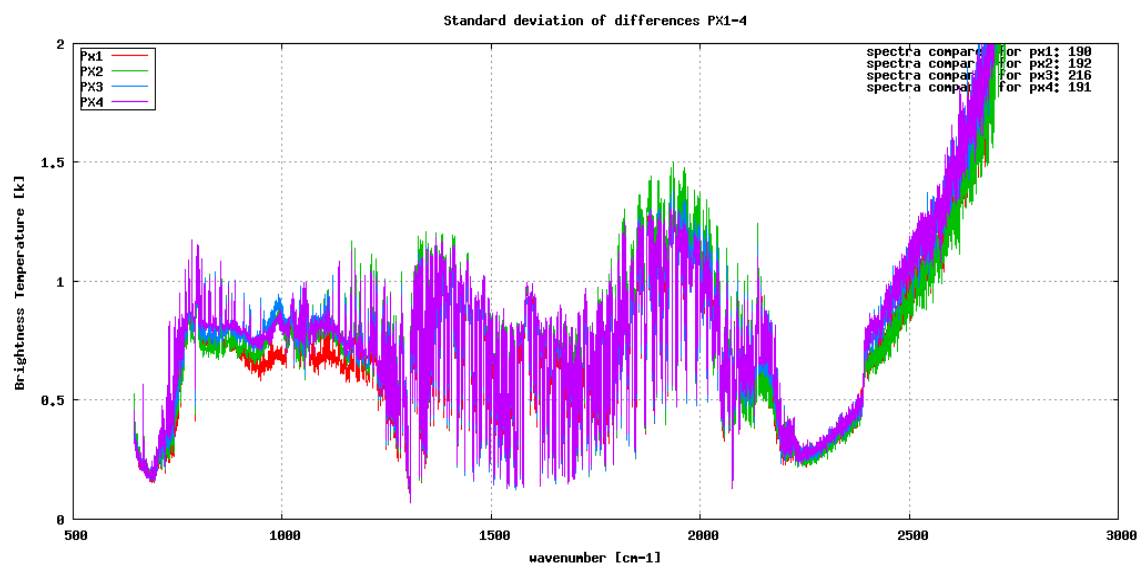


Figure 9: Standard Deviation of Radiance differences

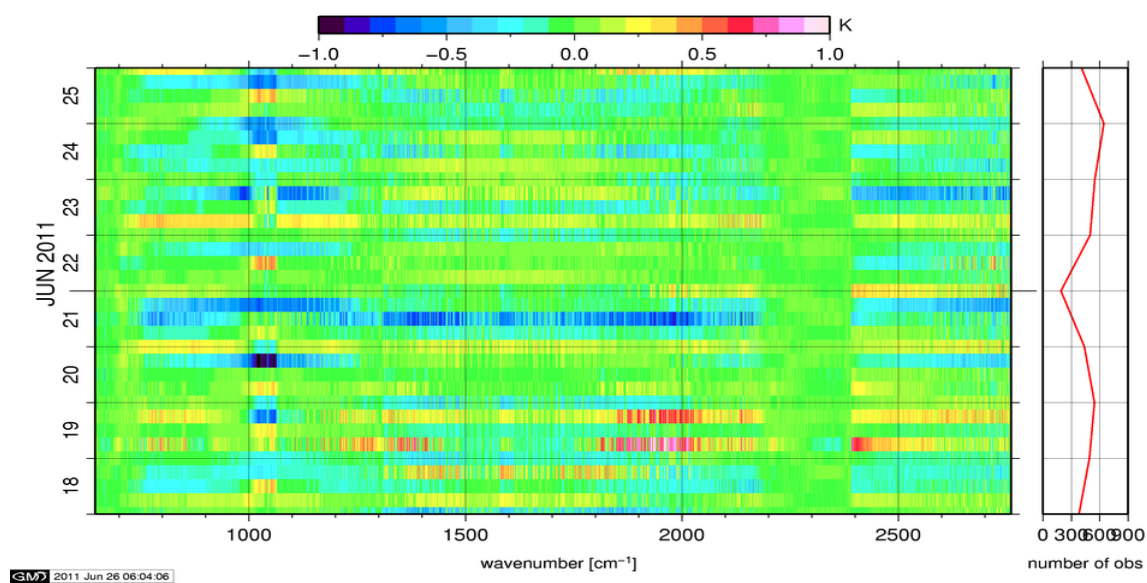


Figure 10: Radiance Anomaly in BRT: All Channels

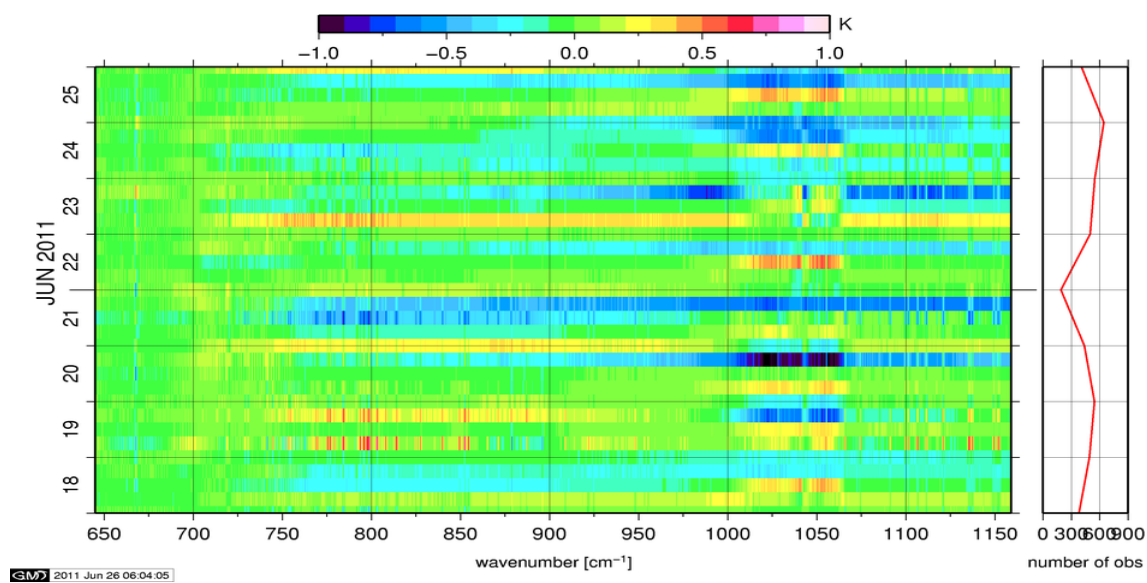


Figure 11: Radiance Anomaly in BRT: IASI Band 1

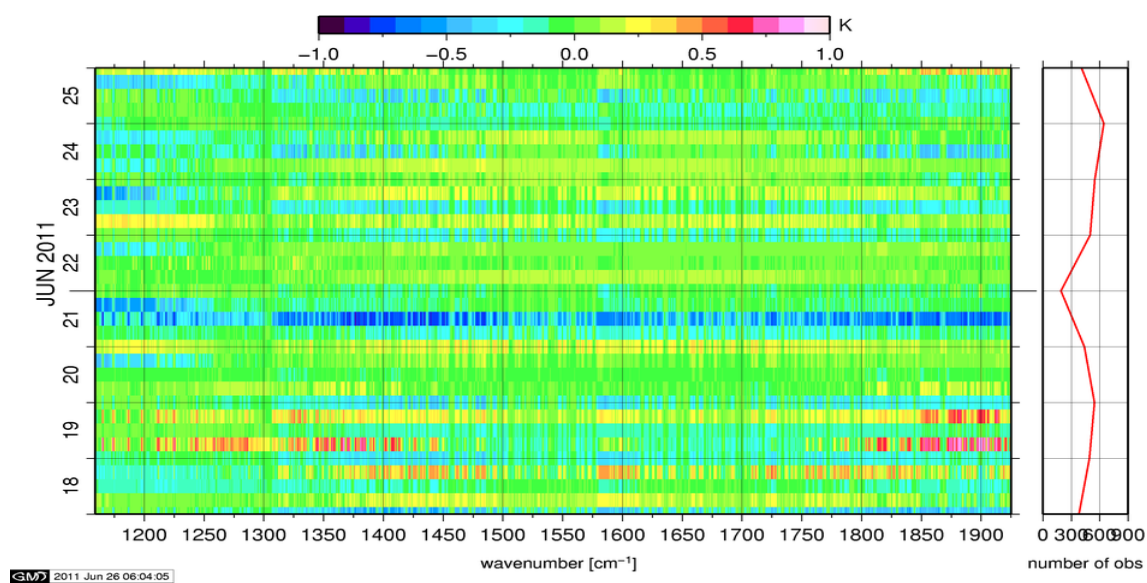


Figure 12: Radiance Anomaly in BRT: IASI Band 2

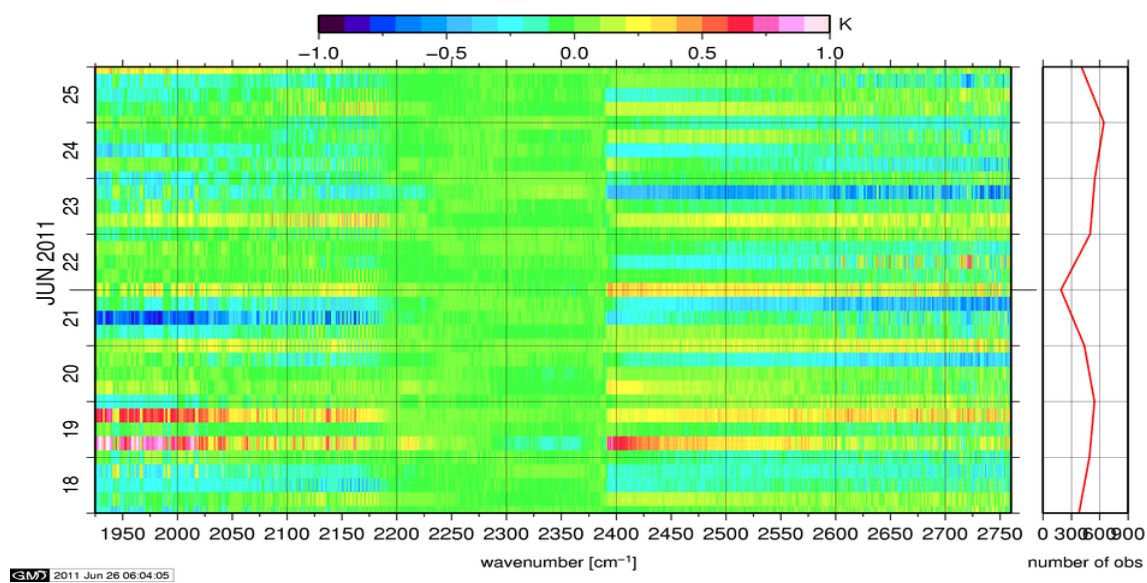


Figure 13: Radiance Anomaly in BRT: IASI Band 3

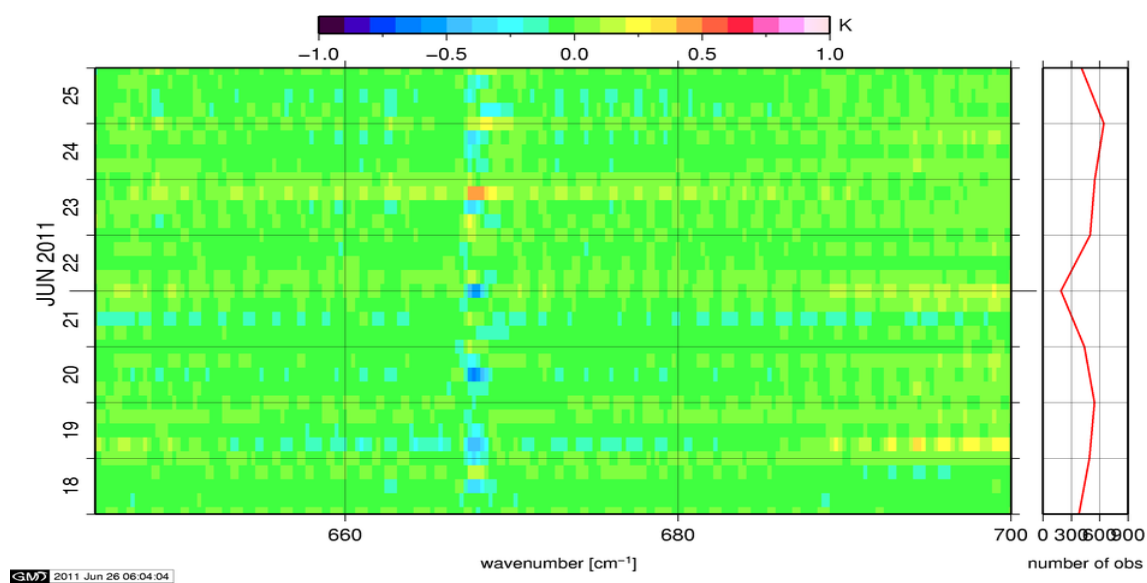


Figure 14: Radiance Anomaly in BRT: CO2 14

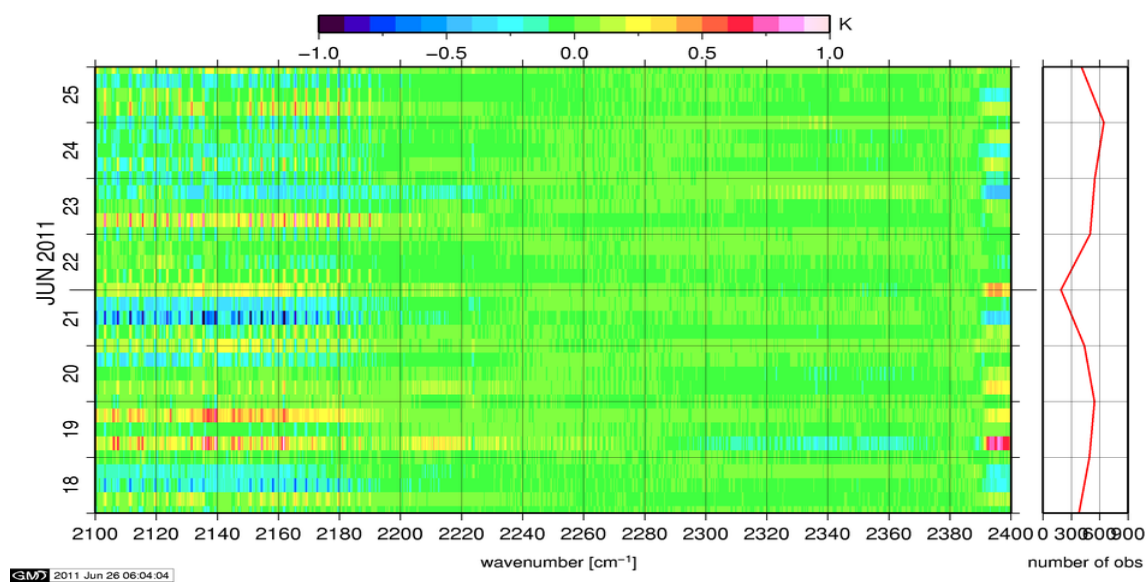


Figure 15: Radiance Anomaly in BRT: CO2 4.3

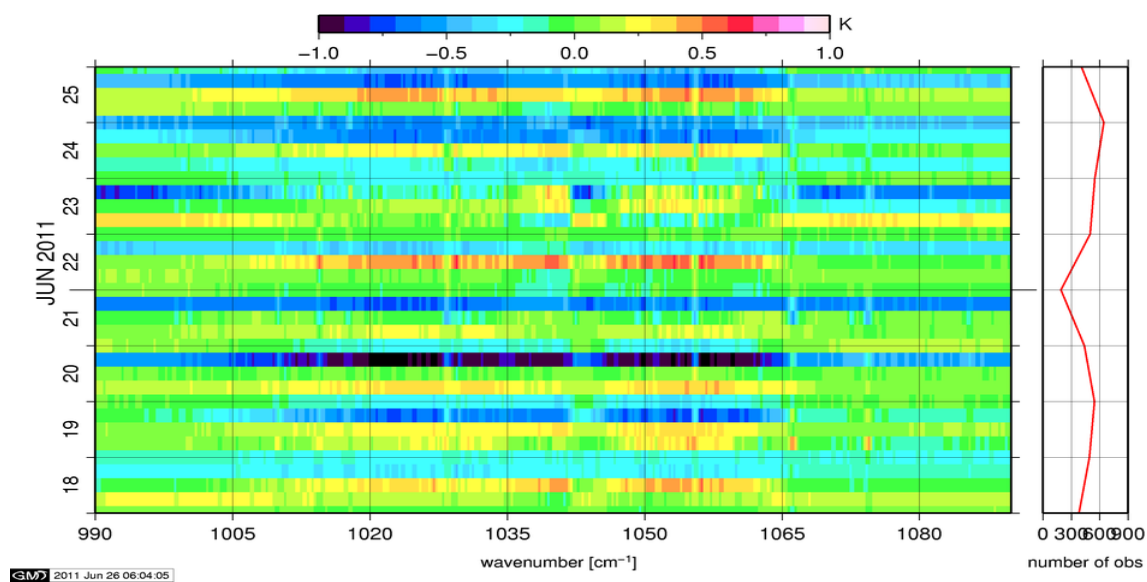


Figure 16: Radiance Anomaly in BRT: O3

6 IASI-HIRS radiance comparison Channel 1-19

The radiance comparison of IASI and HIRS/4 on-board MetOp is performed on all pixel with distances smaller than 3 km between IASI and HIRS. All sky conditions are covered. The radiance differences IASI - HIRS are given in brightness temperatures at 280K reference temperature. All conditions (clear, cloudy, day and night) are given in red in the following figures. The clear sky conditions at night are given in green and the clear sky cases during daylight are displayed in blue.

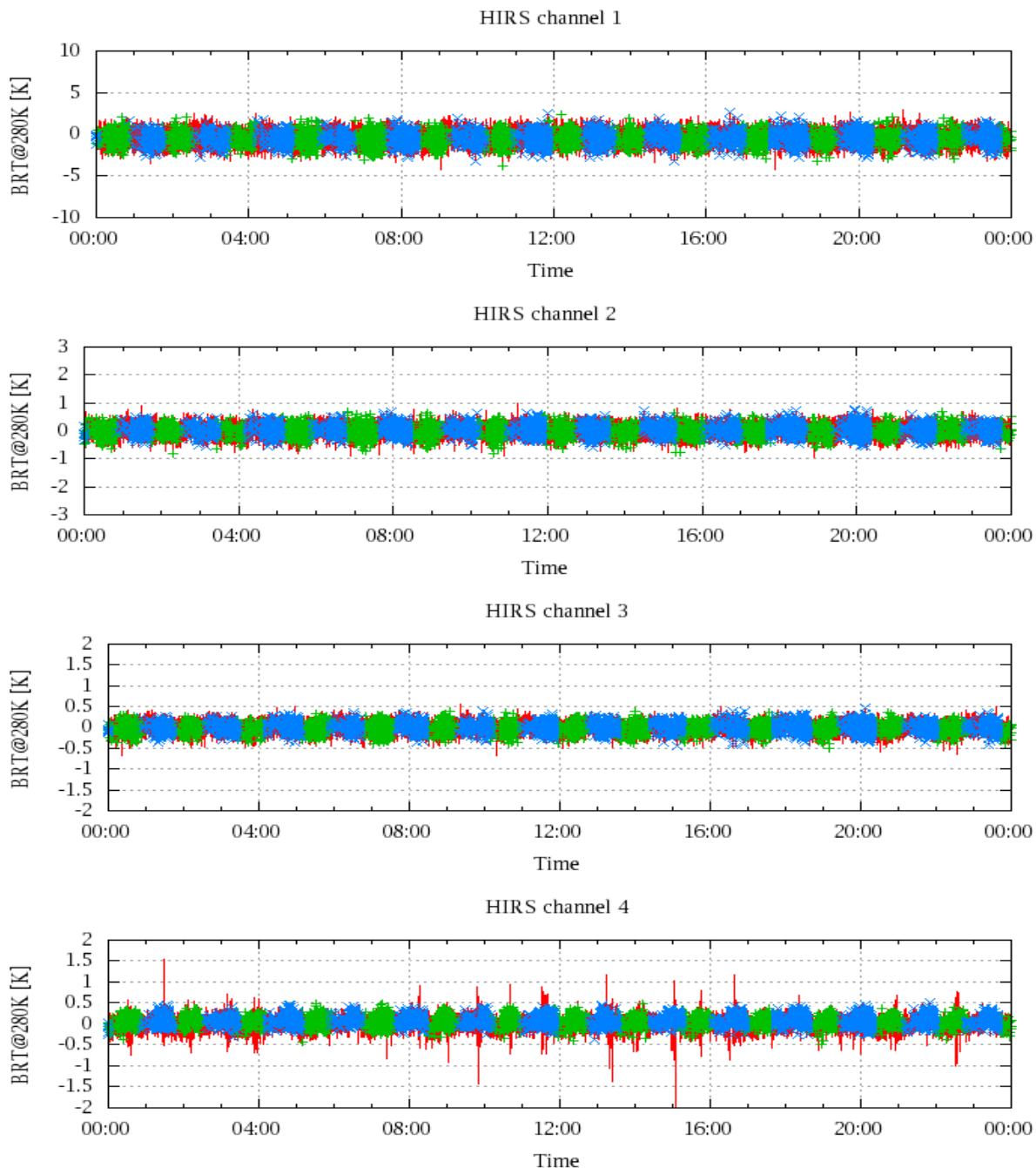


Figure 17: Radiance Differences in BRT

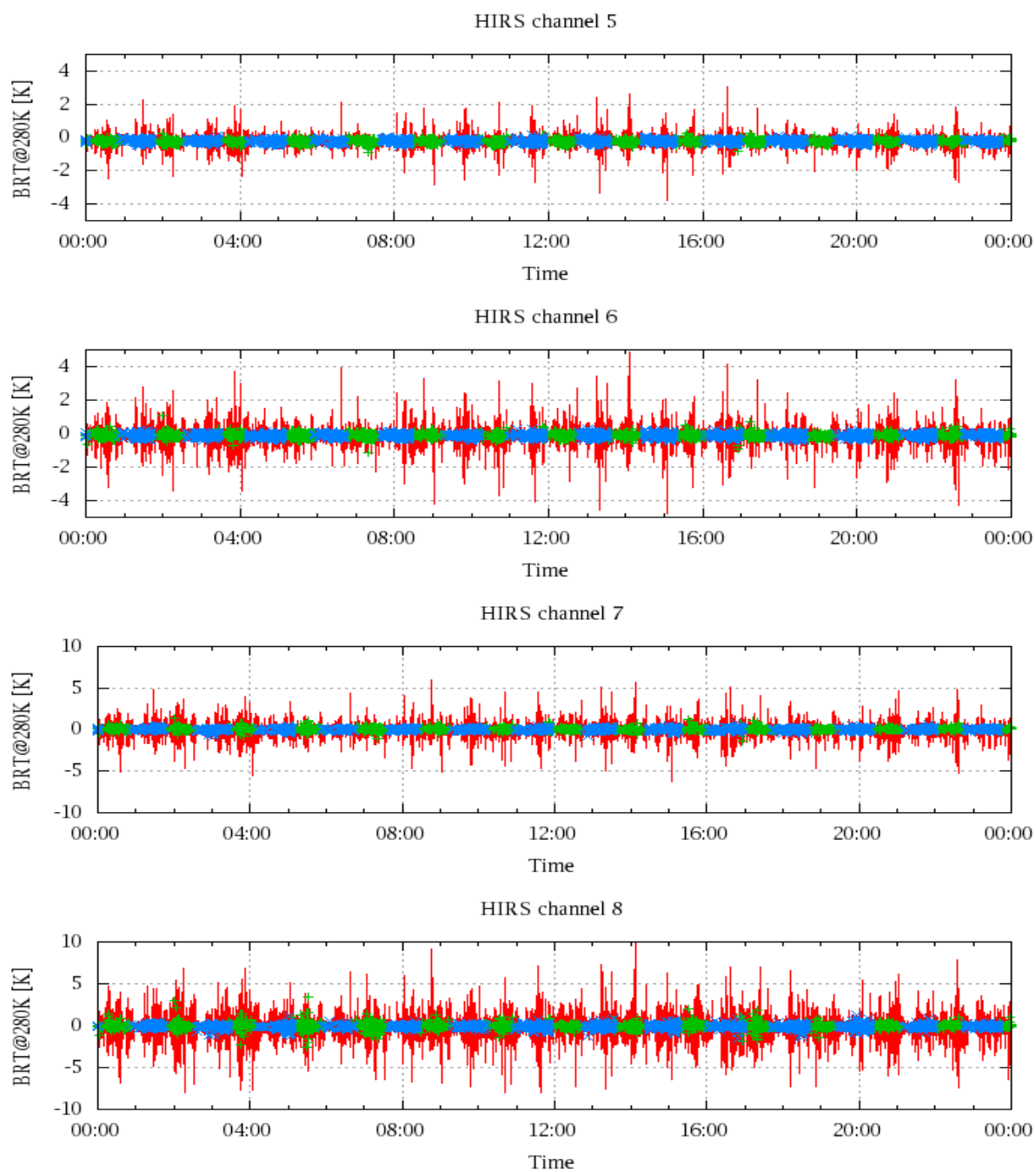


Figure 18: Radiance Differences in BRT

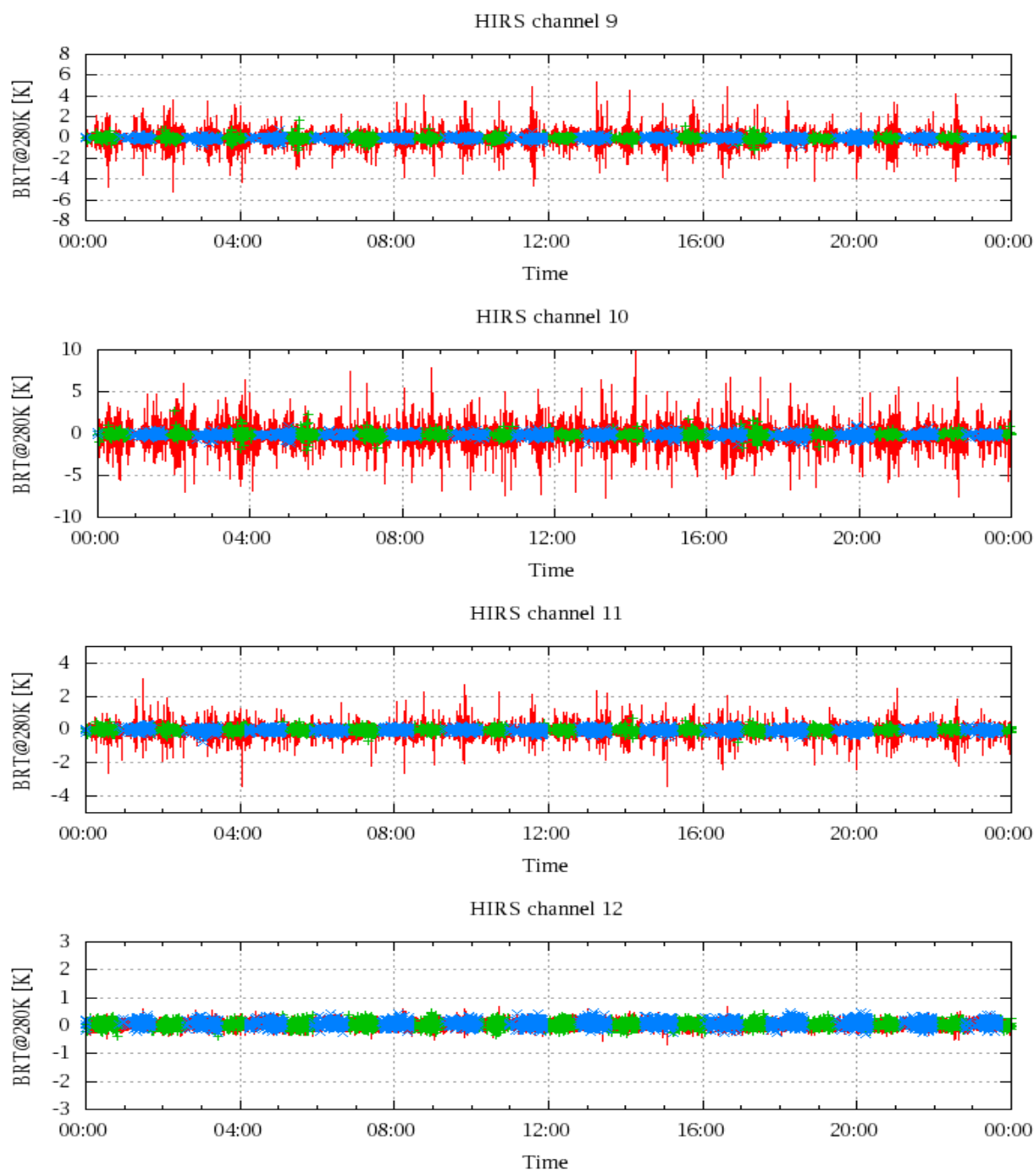


Figure 19: Radiance Differences in BRT

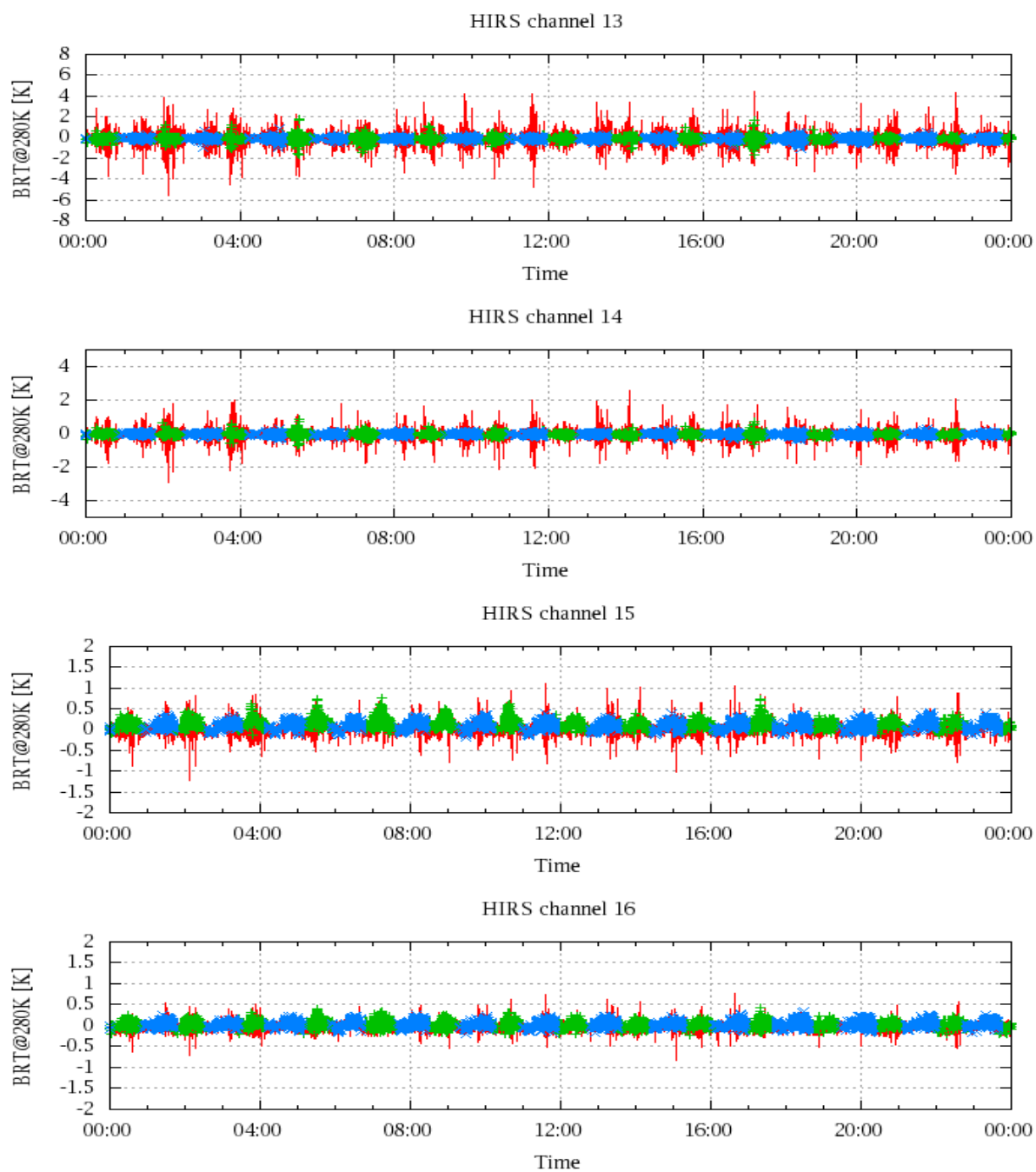


Figure 20: Radiance Differences in BRT

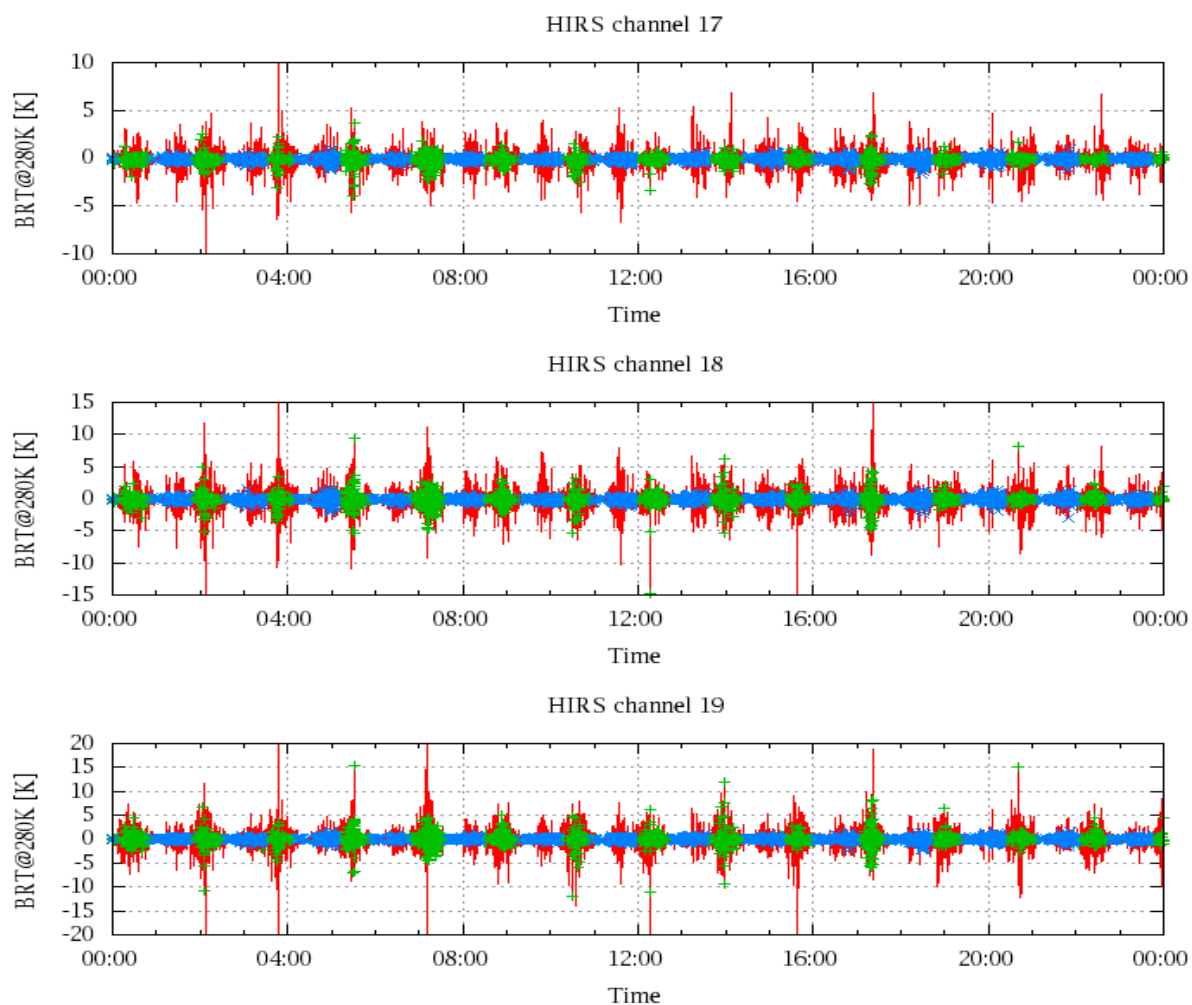


Figure 21: Radinace Differences in BRT