

# ASCAT DAILY Report

**Metop-C**

**OPE**

**DAY 2019\_145**

**20190525000000 - 20190525235959**

## DATA STATISTICS

BASED ON ORBITS (#15)

2826	2827	2828	2829	2830	2831	2832	2833	2834	2835	2836	2837	2838
2839	2840	2841										

DB STATISTICS : OPE M03\_20190525

SMO	480	1.23	.49	.66	3.56
SMR	480	3.29	1.08	2.03	9.18
SZF	480	.42	1.66	.14	22.00
xxx	480	10.82	4.24	6.80	32.79

INGATE (STORE) STATISTICS : OPE M03\_20190525

xxx_1A	/fbf/tcdras/store/gsl/ASCA_xxx_1A_M03	-- number of files (xxx_1A) : 480
SZO_1B	/fbf/tcdras/store/gsl/ASCA_SZO_1B_M03	-- number of files (SZO_1B) : 480
SZR_1B	/fbf/tcdras/store/gsl/ASCA_SZR_1B_M03	-- number of files (SZR_1B) : 480
SZF_1B	/fbf/tcdras/store/gsl/ASCA_SZF_1B_M03	-- number of files (SZF_1B) : 480
SMO_02	/fbf/tcdras/store/gsl/ASCA_SMO_02_M03	-- number of files (SMO_02) : 480
SMR_02	/fbf/tcdras/store/gsl/ASCA_SMR_02_M03	-- number of files (SMR_02) : 480

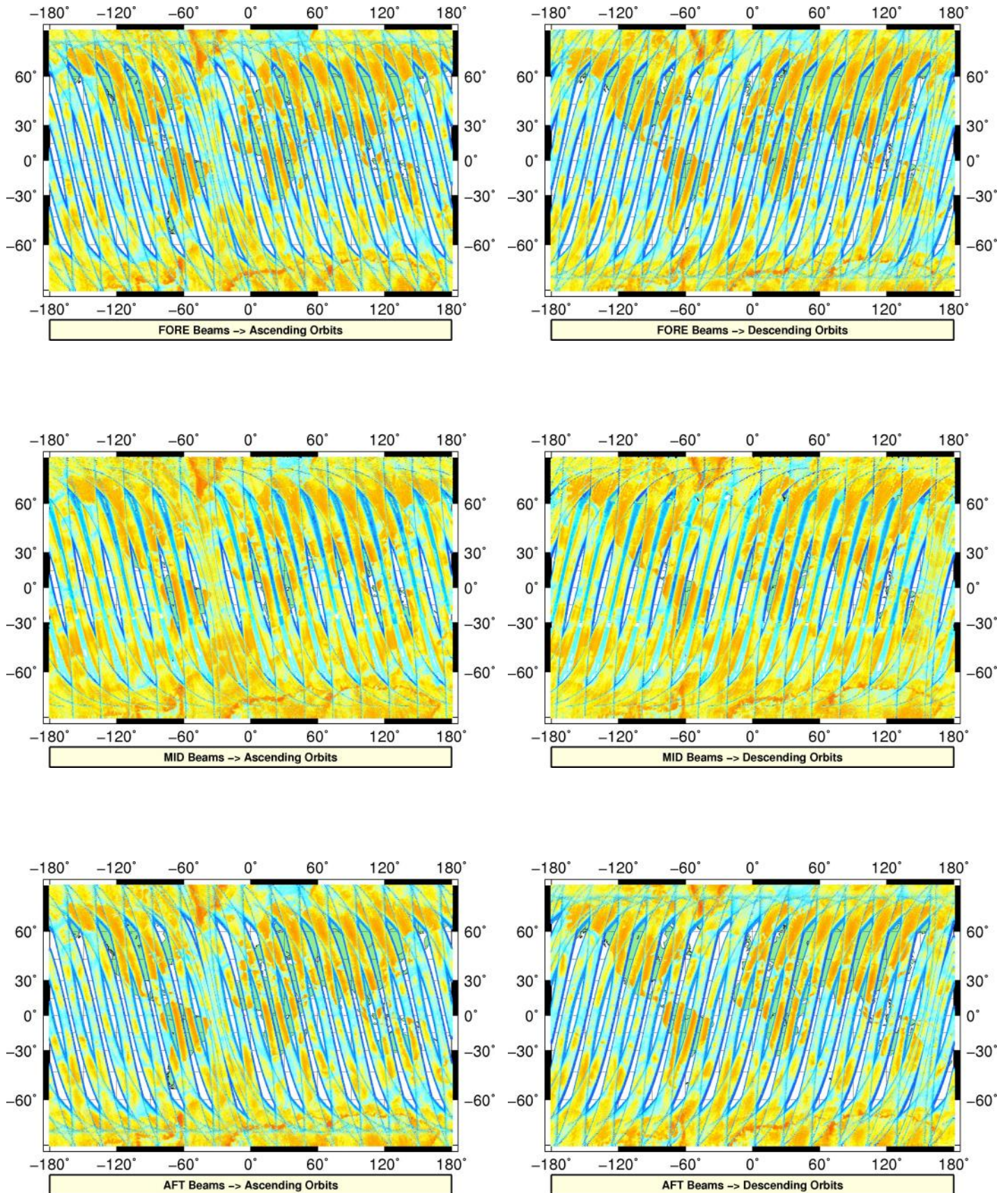
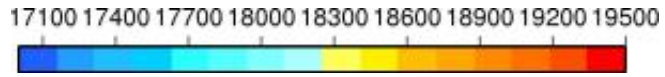
# Overview

## Configuration and SPHR content

Parameter	Value
SENSING START-STOP	20190525000000 - 20190525235959
ORBIT START-STOP	-
SATELLITE	M03
SW - DPU Version	3.9 (57)
SW - ICU Version	2.03 (35)
PARAM - Drive Level ID	0 (Nominal drive level as defined in the active DPU Data Set)
PARAM - DPU Data Set ID	4
PARAM - Revision ID	1
INST - Table Set ID	0 (no calibration, nominal table set used)
INST - Redundancy Config	127
	nominal ICU
	nominal DPU
	nominal RFU
	nominal HPA
	nominal SFE
	nominal SFE LNA
	nominal signal path (from HPA_B)
N_L1A_MDR	610403
N_L1A_MDR_B0	101734
N_L1A_MDR_B1	101734
N_L1A_MDR_B2	101734
N_L1A_MDR_B3	101734
N_L1A_MDR_B4	101734
N_L1A_MDR_B5	101733
N_GAPS	0
TOTAL_GAPS_SIZE	0
N_HKTM_PACKETS_RECEIVED	16158
N_F_NOISE	0
N_F_PG	0
N_V_PG	0
N_F_FILTER	0
N_V_FILTER	0
N_F_PGP	0
N_F_NP	0
N_F_ORBIT	0
N_F_ATTITUDE	0
N_F_OMEGA	0
N_F_MAN	0
N_F_OSV	0
N_F_E_TEL_PRES	0
N_F_E_TEL_IR	0
N_F_CE	0
N_V_CE	0
N_F_OA	0
N_F_TEL	0
N_F_REF	0
N_F_SA	1054510
N_F_LAND	49660026
N_F_GEO	3292990
N_F_SIGN	0
N_L1B_MDR	0
N_EMPTY_S0_TRIP	0
N_L1B_MDR_F	0
N_EMPTY_S0_TRIP_F	0
N_L1B_MDR_M	0

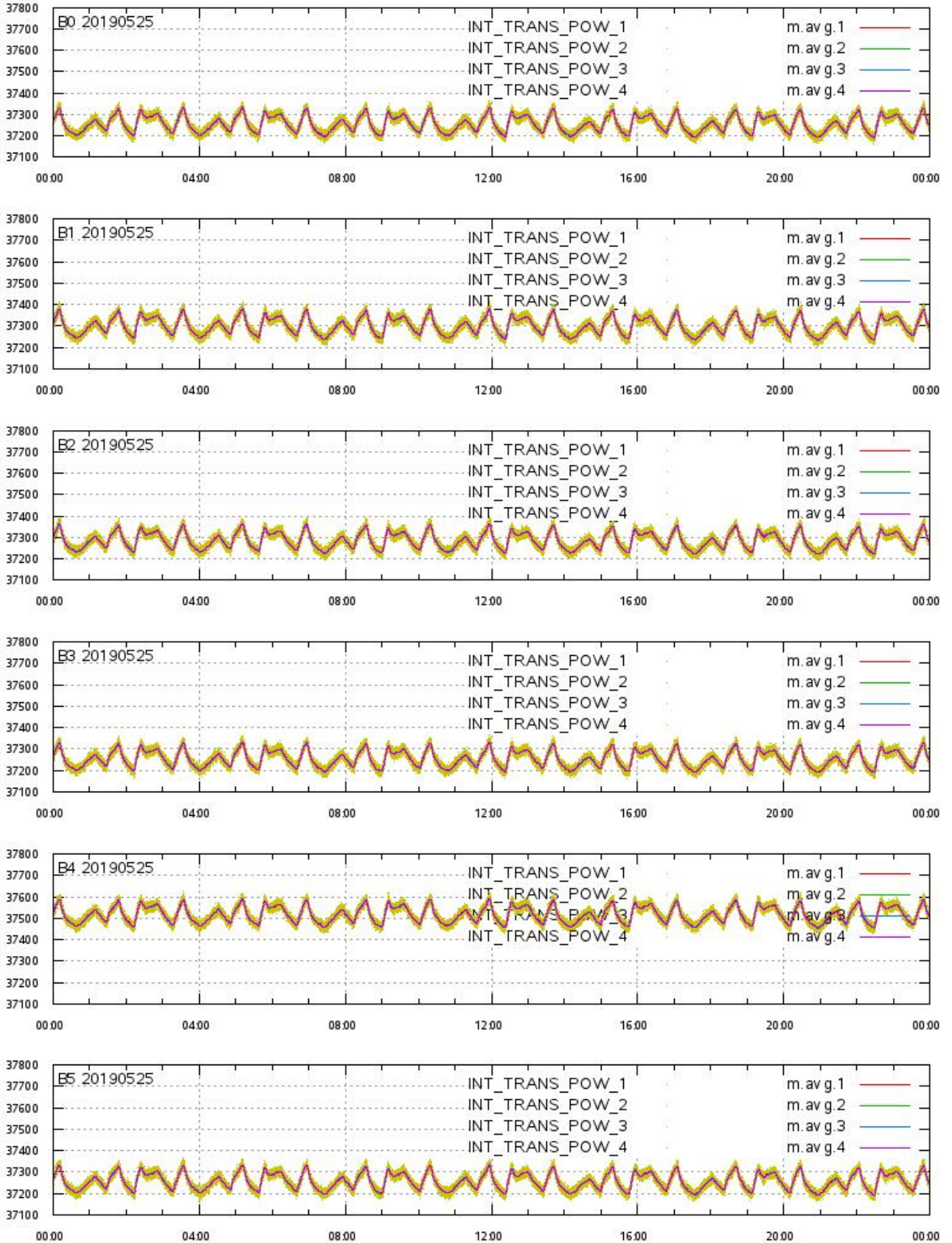
# L1A Product

## Echo Data Coverage maps



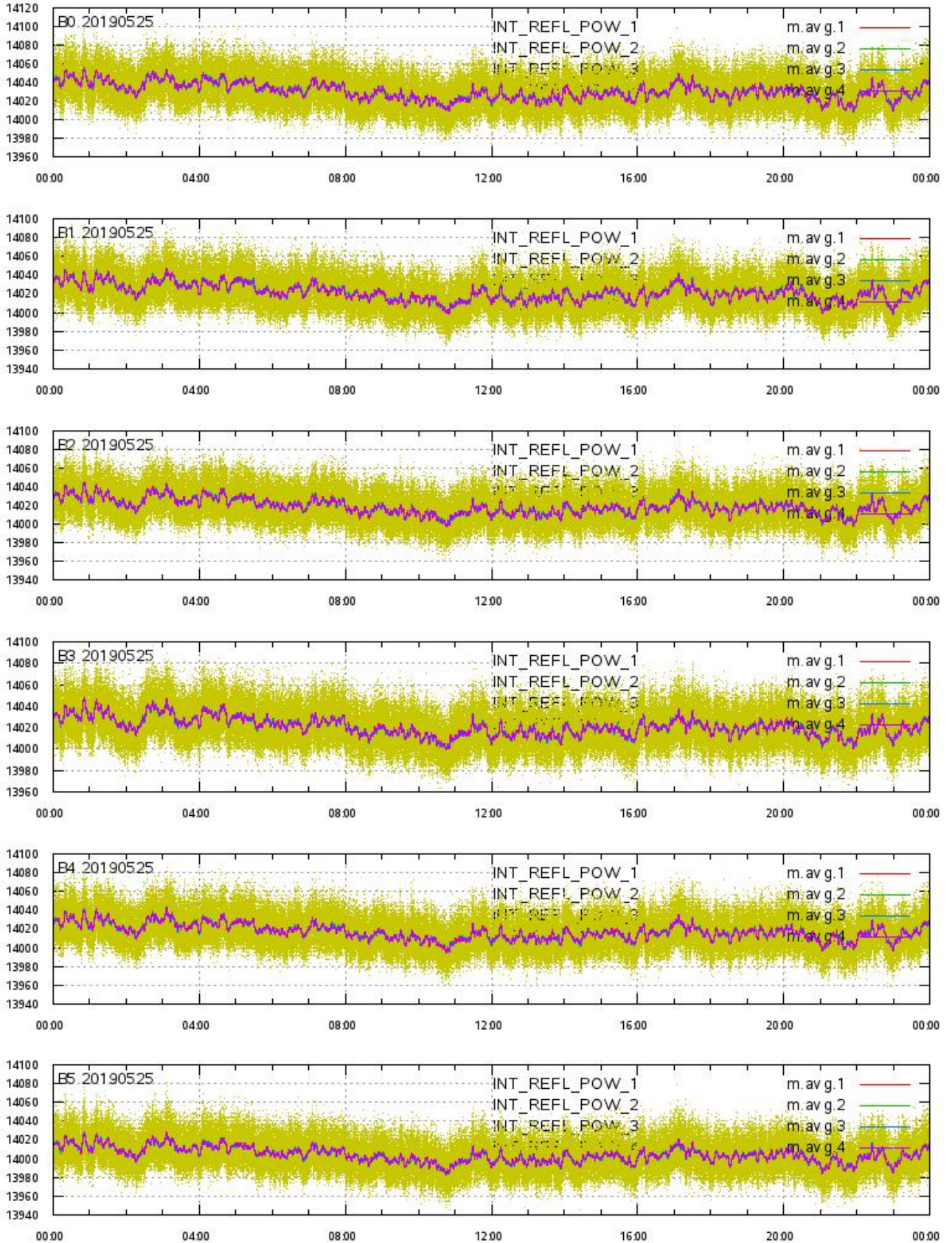
# L1A Product

## Integrated Transmitted Powers 1-4 per beam 0-5 vs. UTC\_LOCALISATION



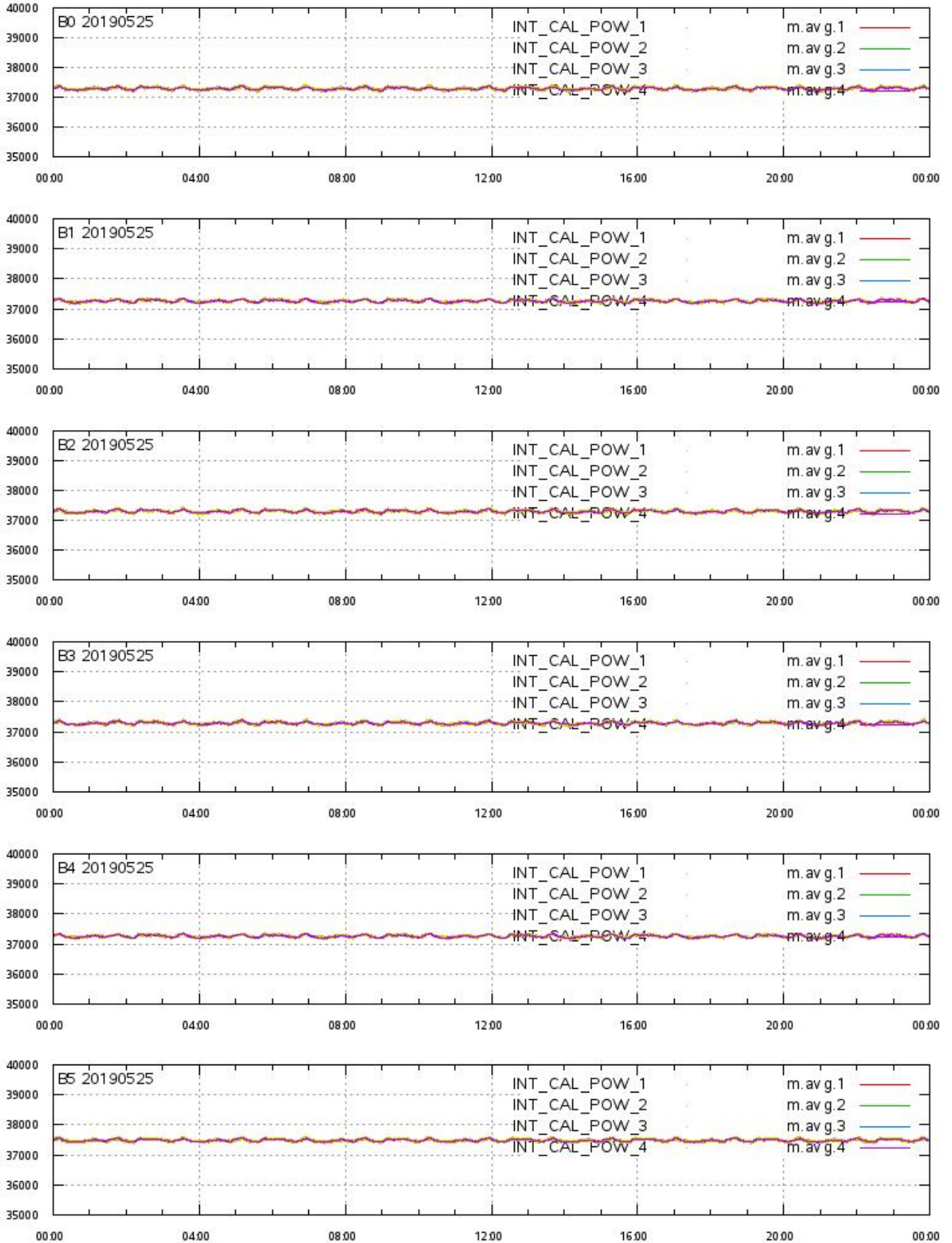
# L1A Product

## Integrated Reflected Powers 1-4 per beam 0-5 vs. UTC\_LOCALISATION



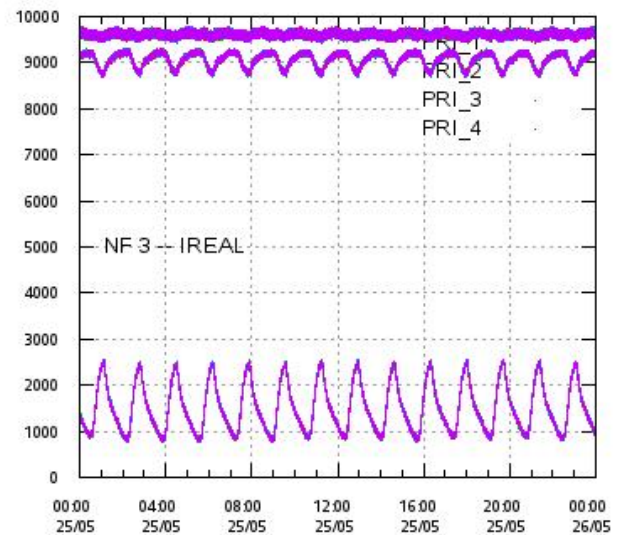
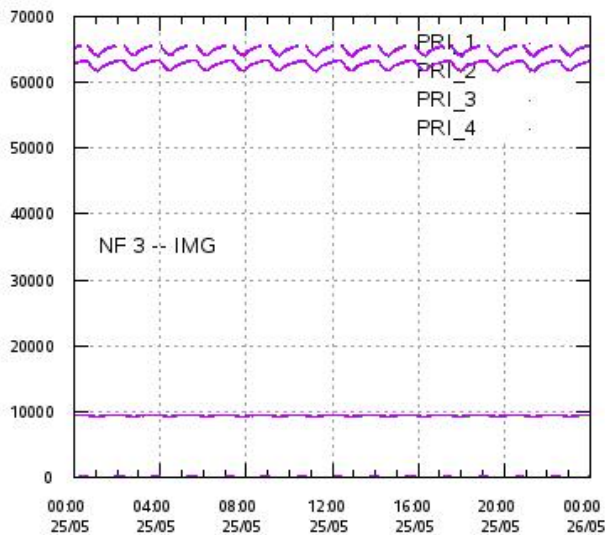
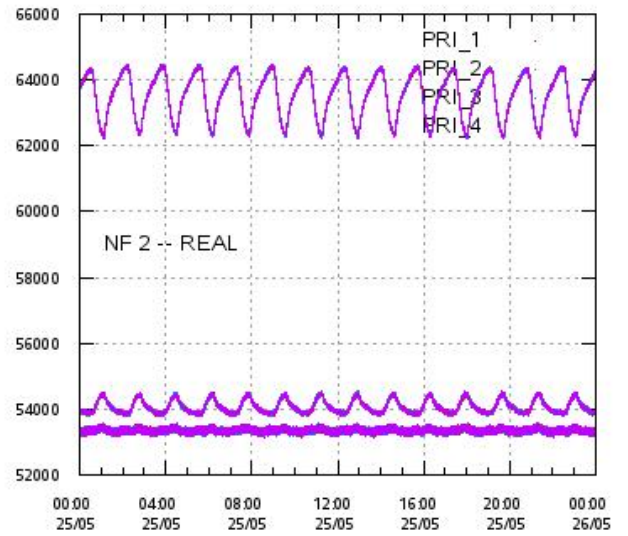
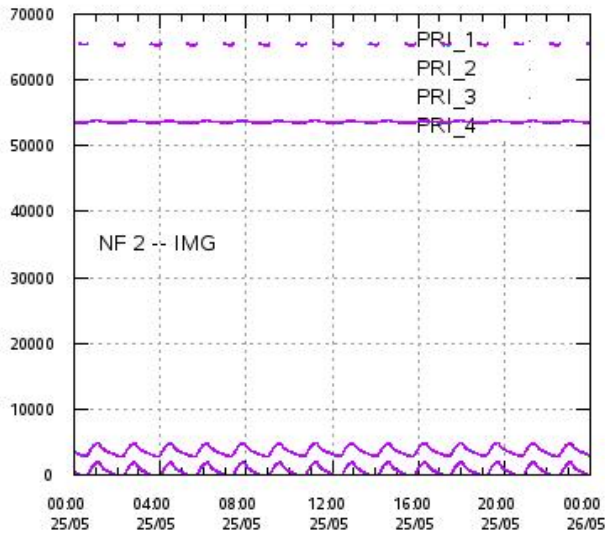
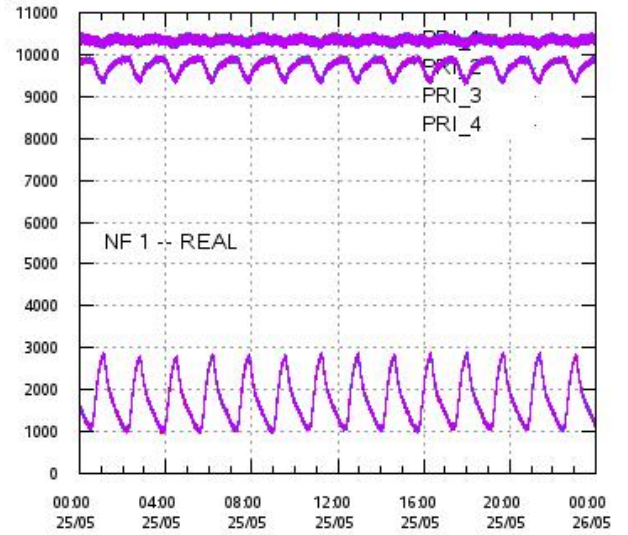
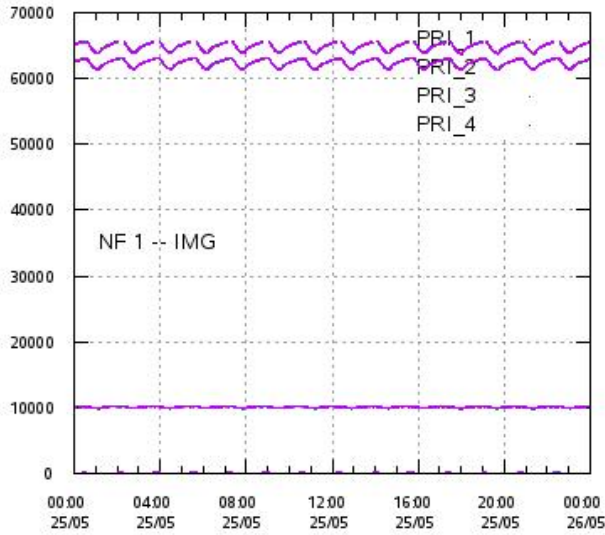
# L1A Product

## Integrated Calibration Powers 1-4 per beam 0-5 vs. UTC\_LOCALISATION



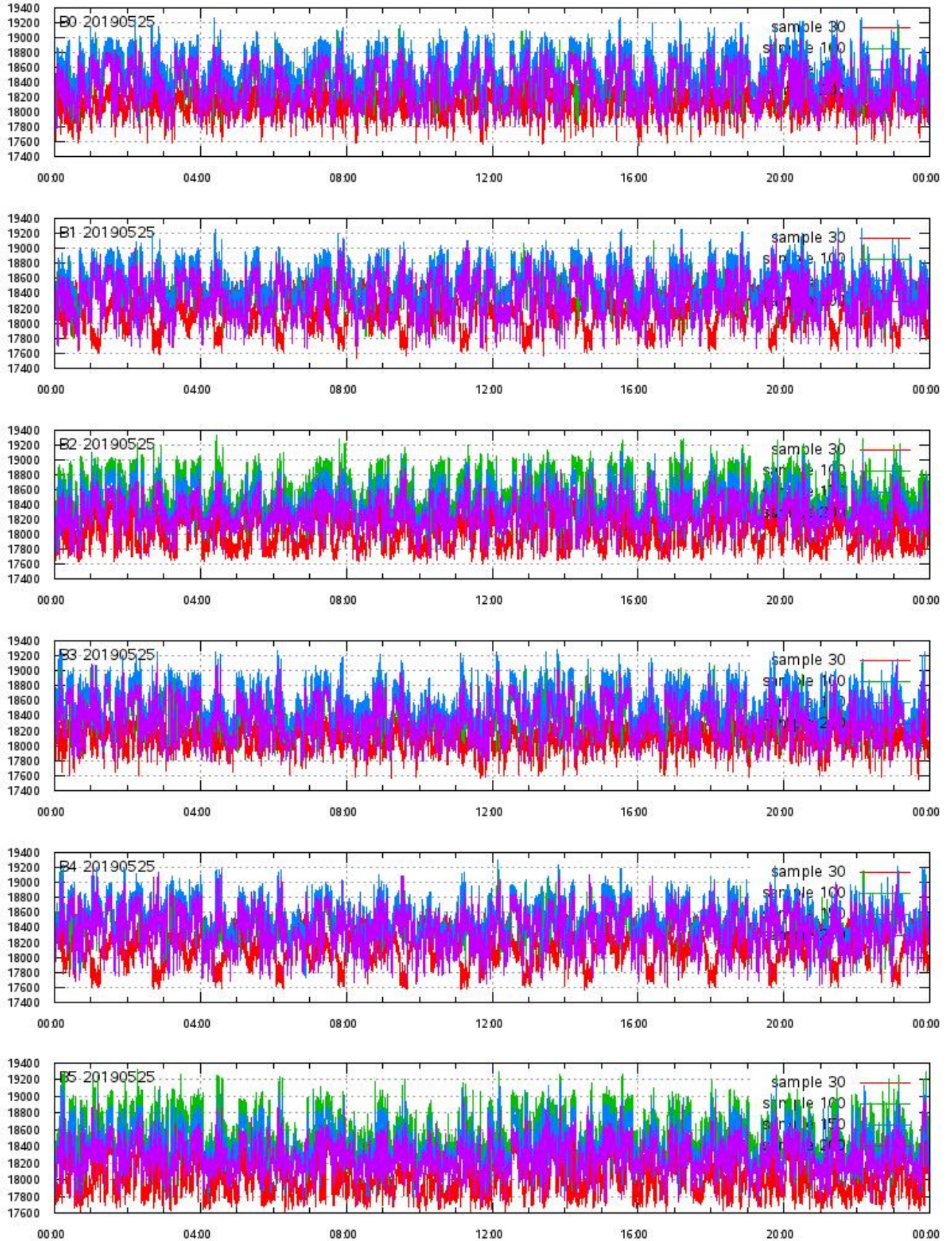
# L1A Product

## Calibration Powers vs. UTC\_LOCALISATION



# L1A Product

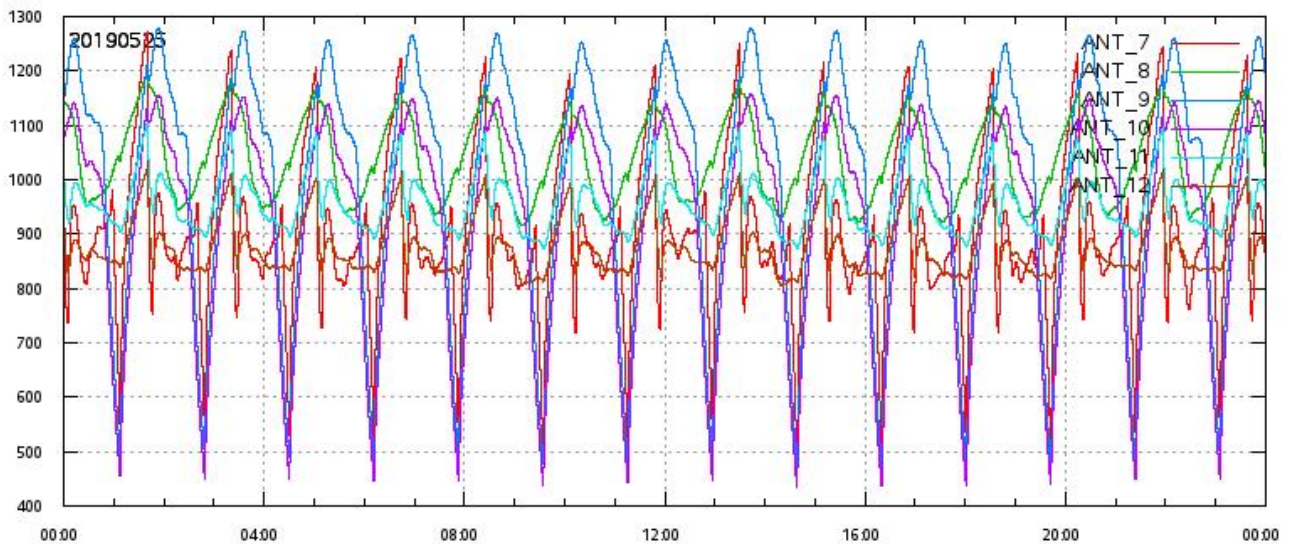
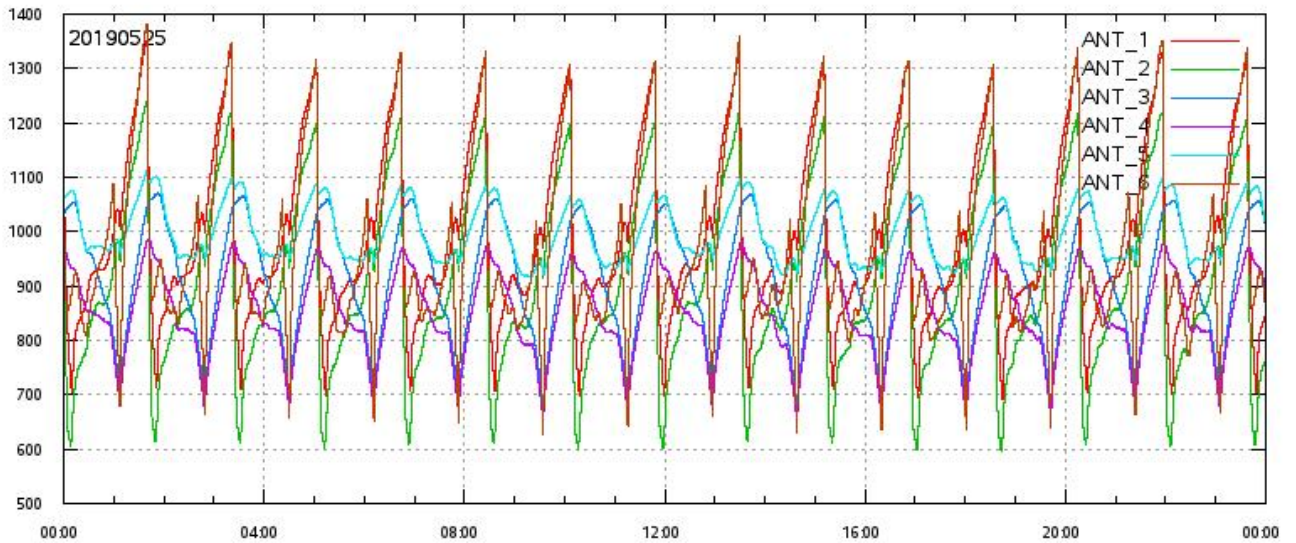
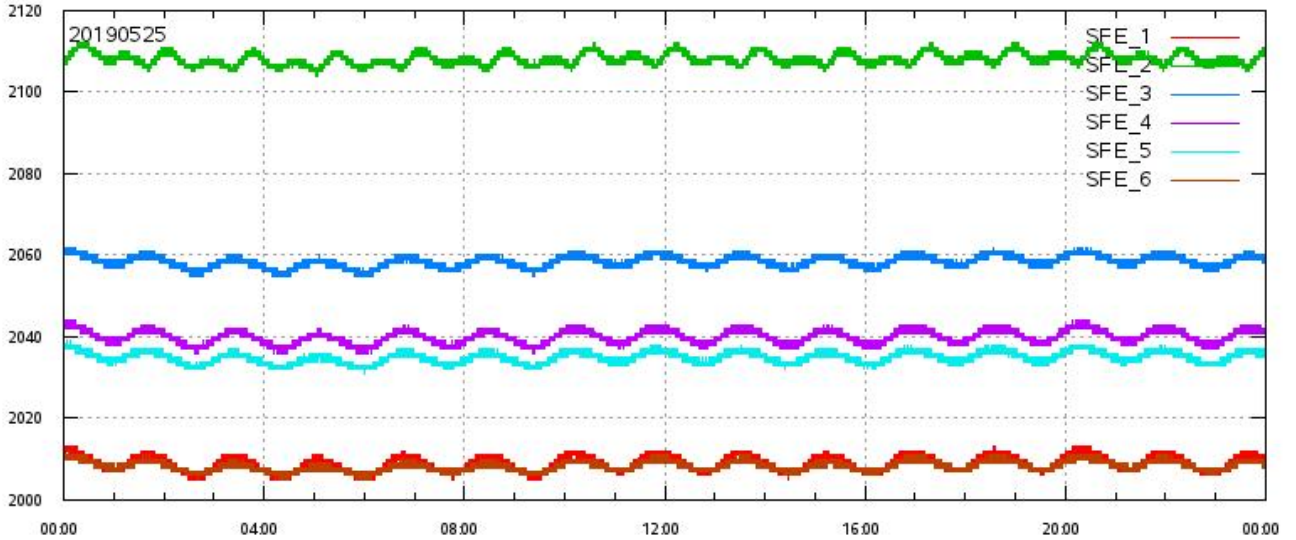
ECHO DATA (raw) for samples 30, 100, 150 and 200 vs. UTC\_LOCALISATION





# L1A Product

SFE & ANT Temperatures (raw) vs. UTC\_LOCALISATION

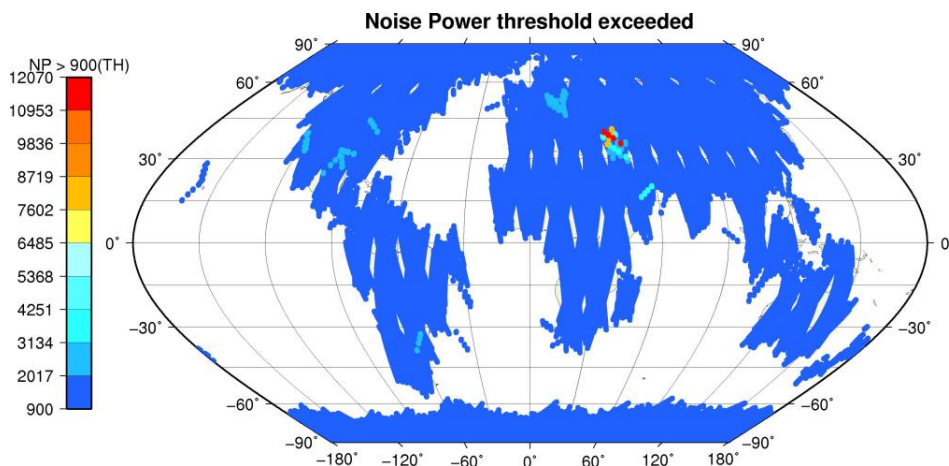
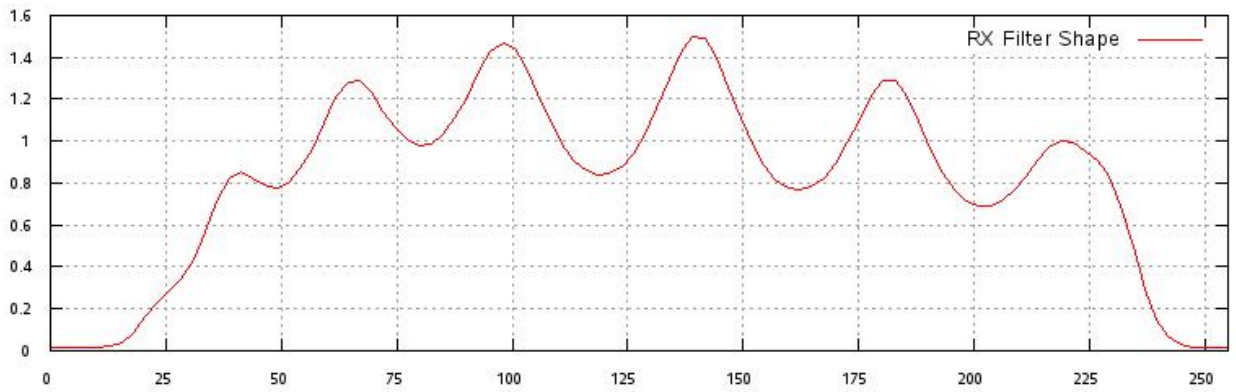
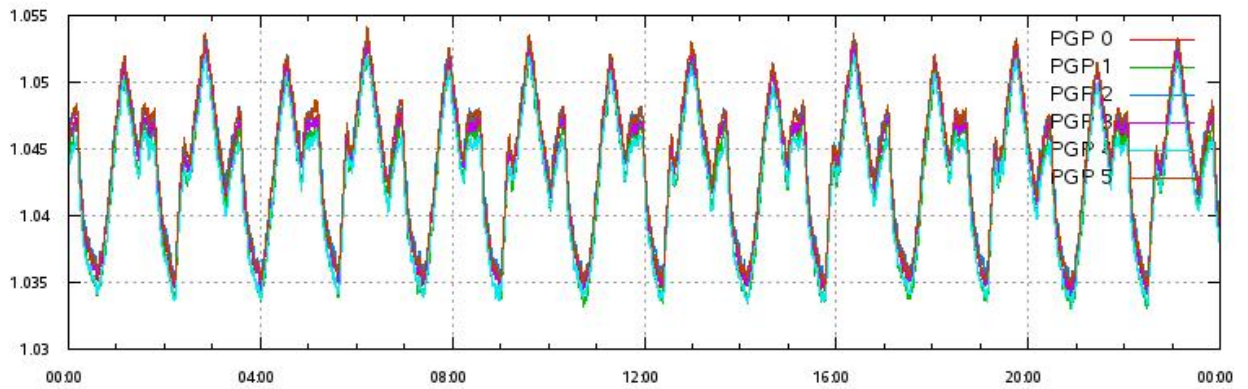
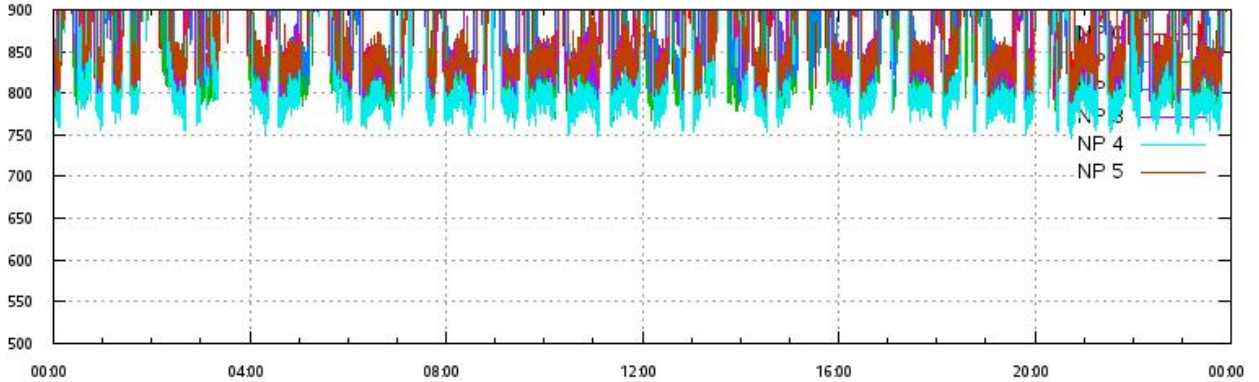


# L1A Product

Noise Power & Power Gain Product per beam 0-5 vs. UTC\_LOCALISATION

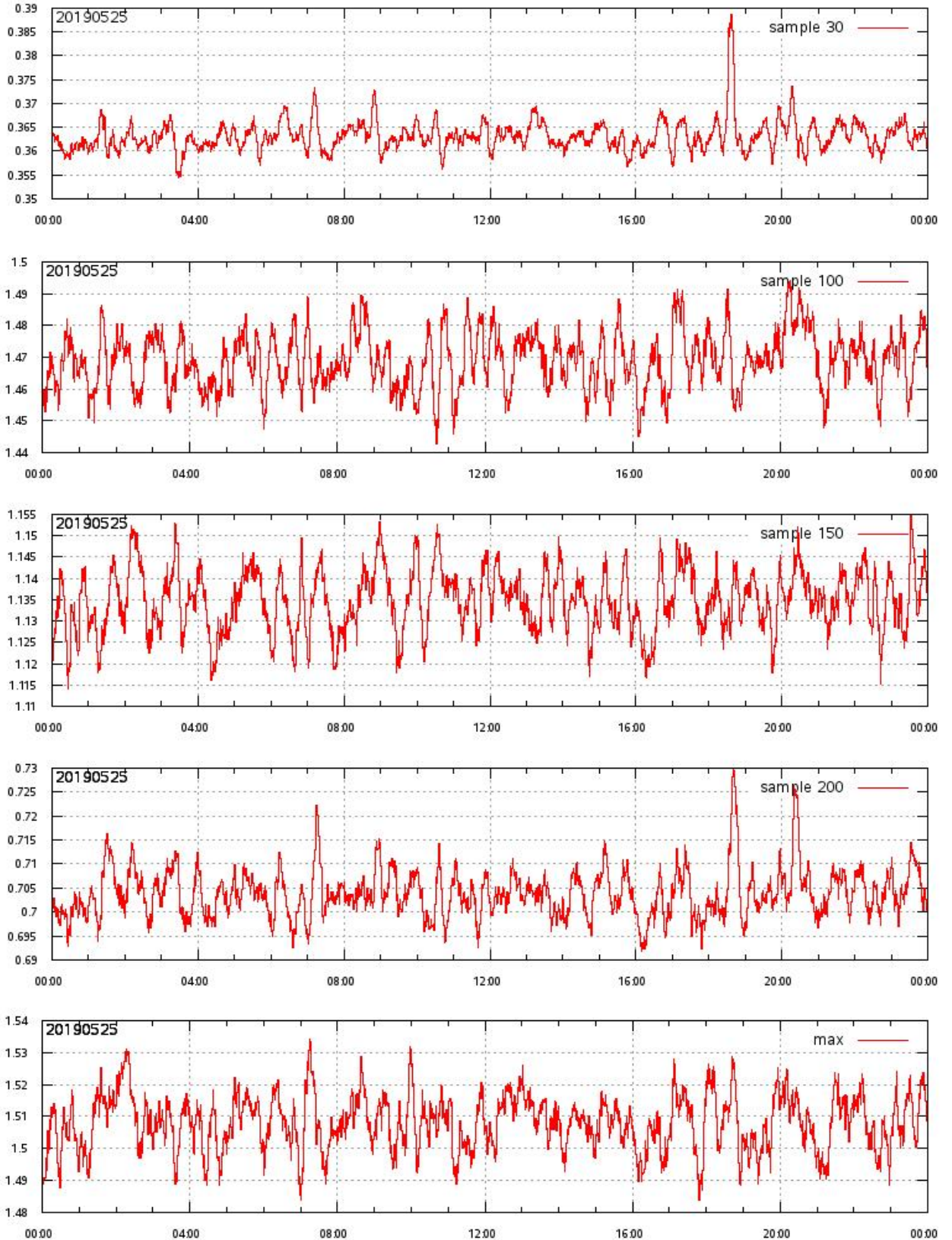
RX Filter Shape average over sample number

Noise Power threshold exceeded (TH=900) on map



# L1A Product

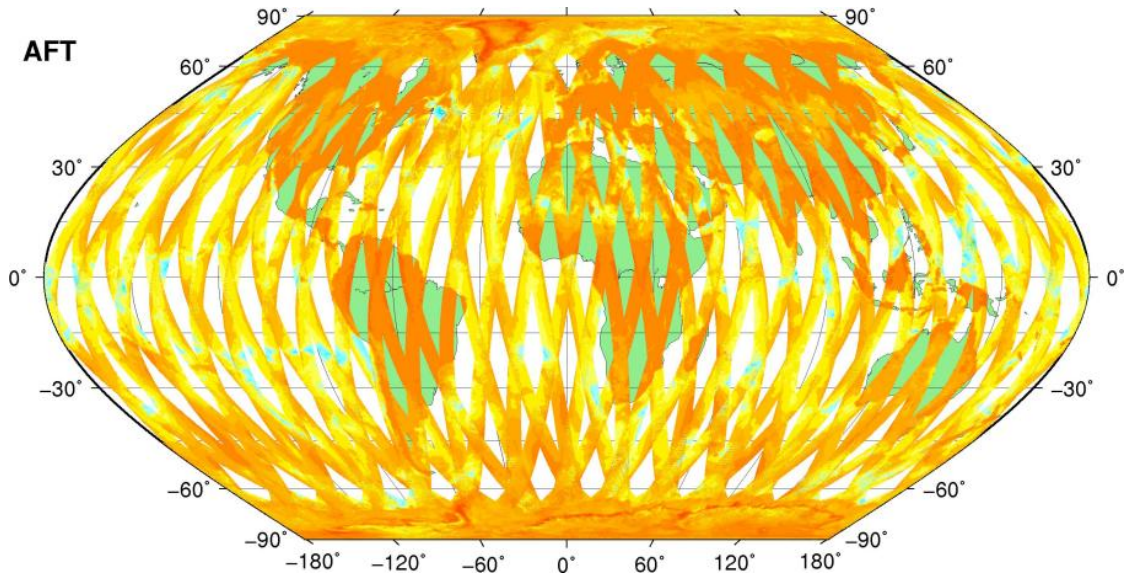
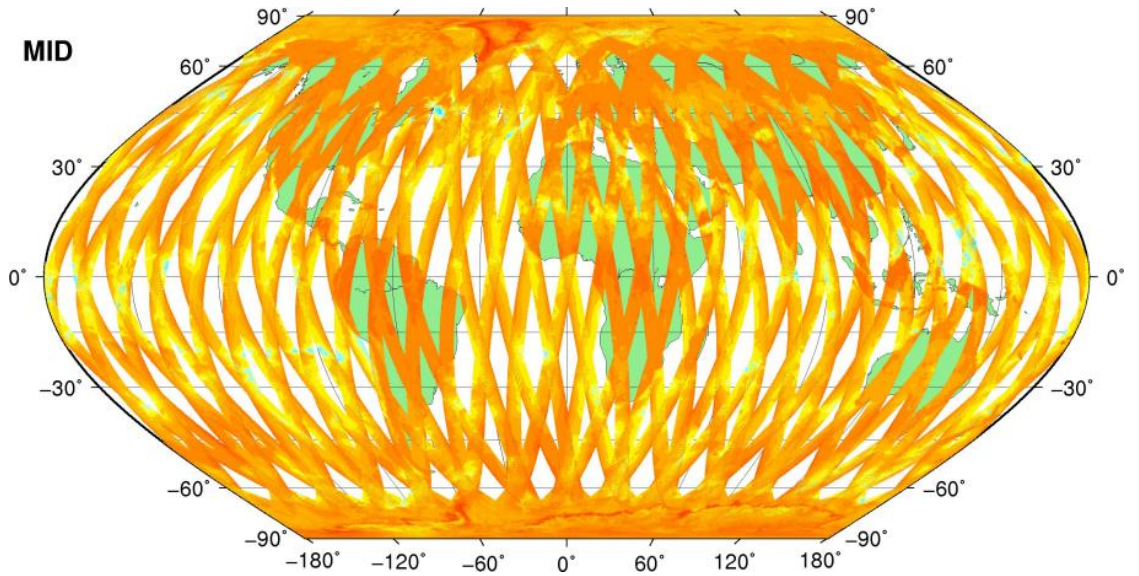
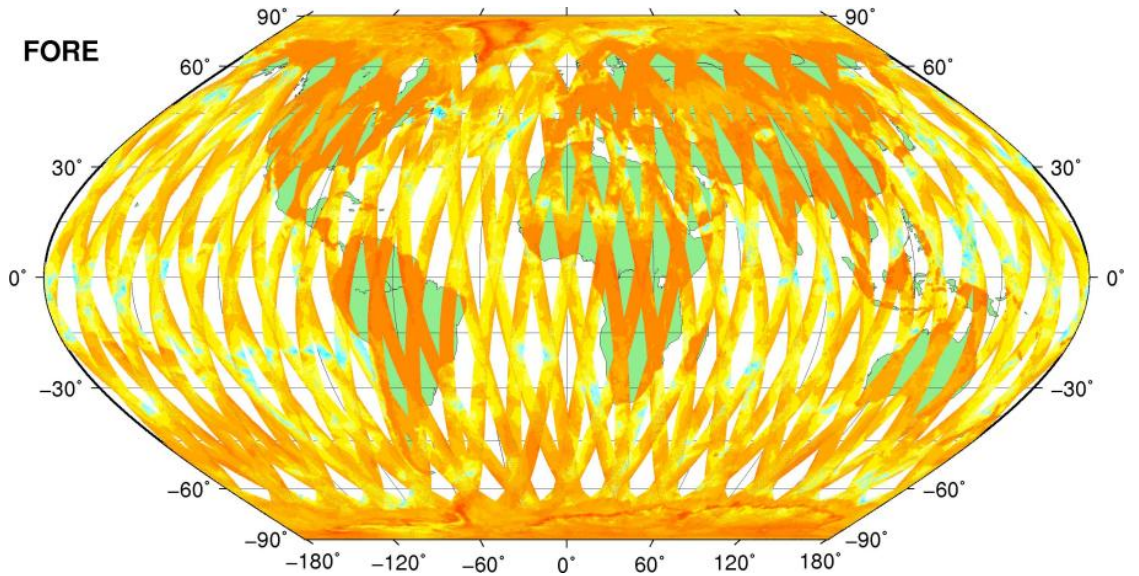
RX filter shape in detail for sample 30,100,150, 200 & max vs. UTC\_LOCALISATION



# SZO Product

Sigma0\_TRIP Coverage map

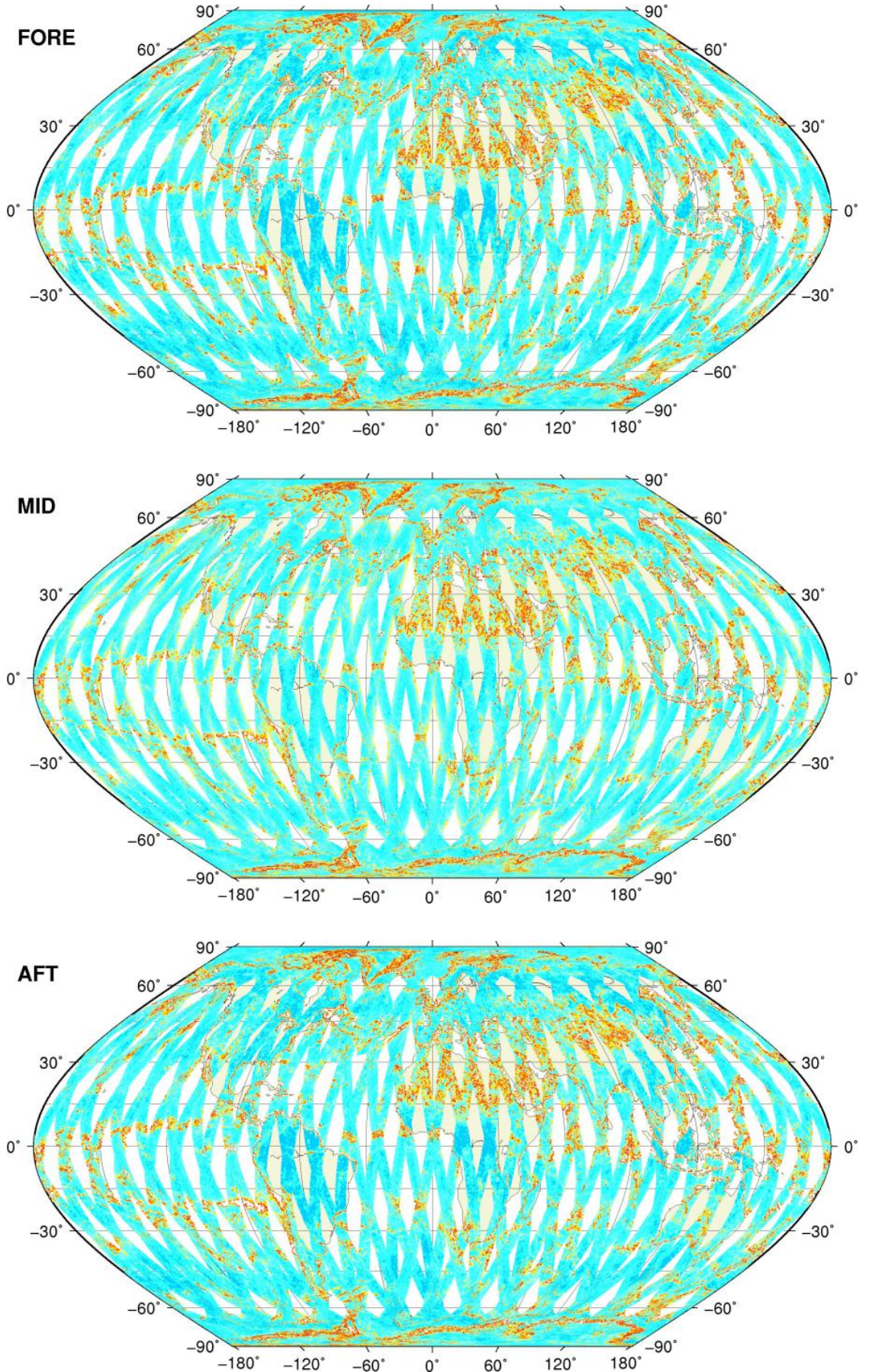
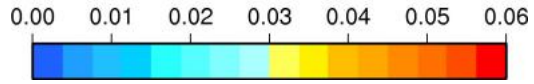
## SIGMA0\_TRIP Coverage



# SZO Product

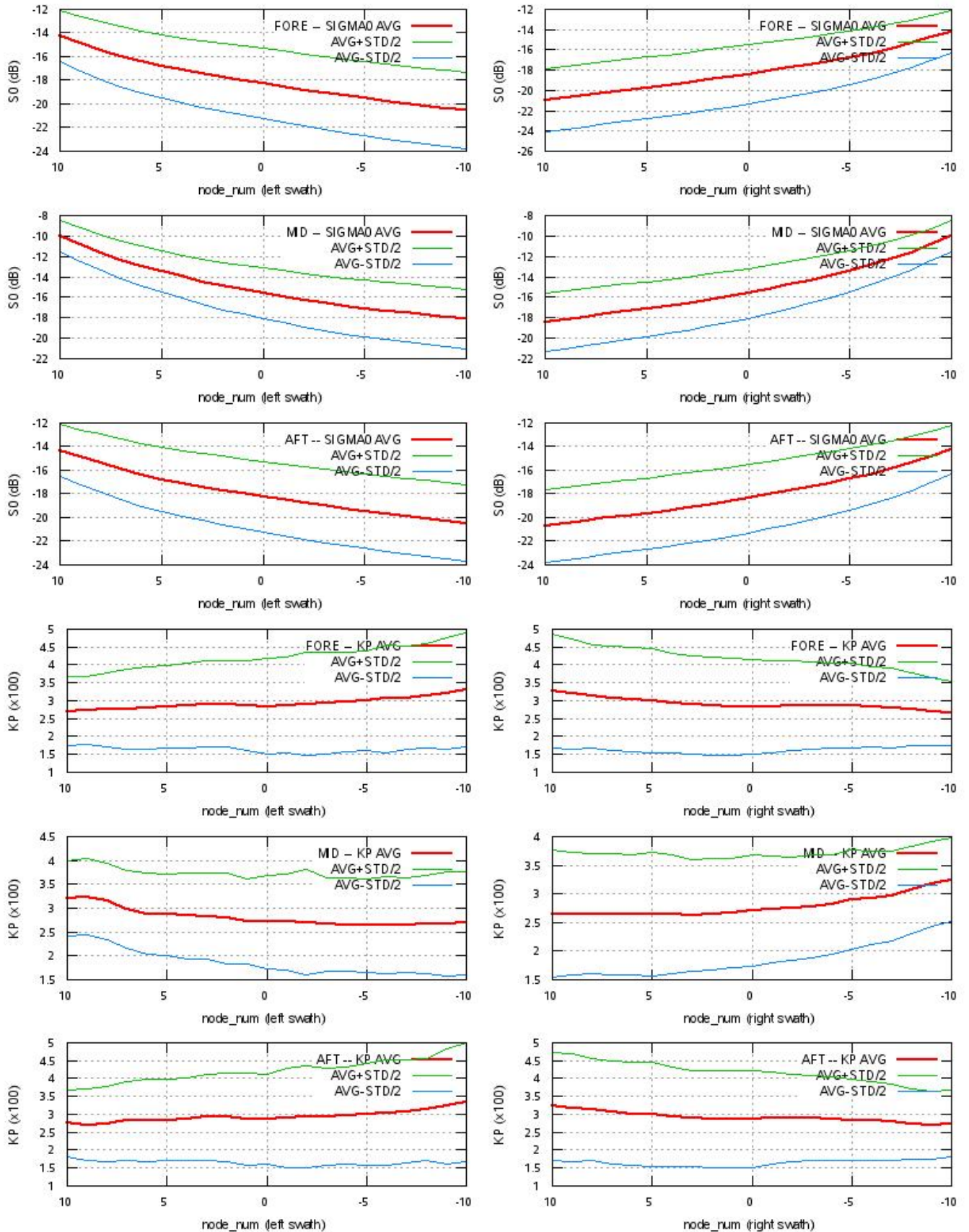
## Kp Coverage map

### Kp Coverage



# SZO Product

## S0 - Kp Statistics



# SZO Product

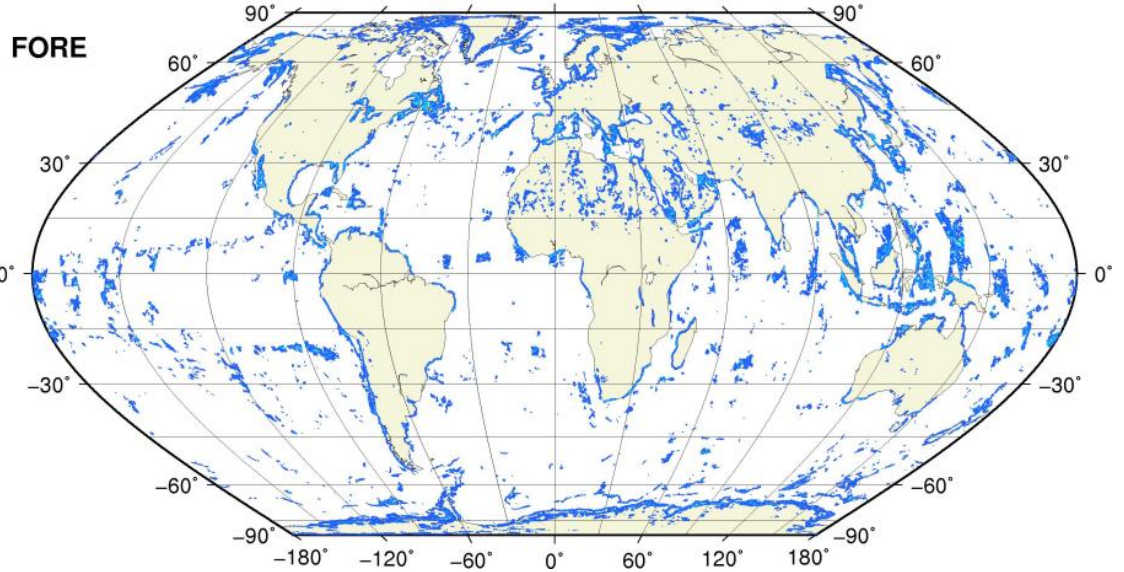
Kp Outliers on map

0.06 < Kp < 1.0

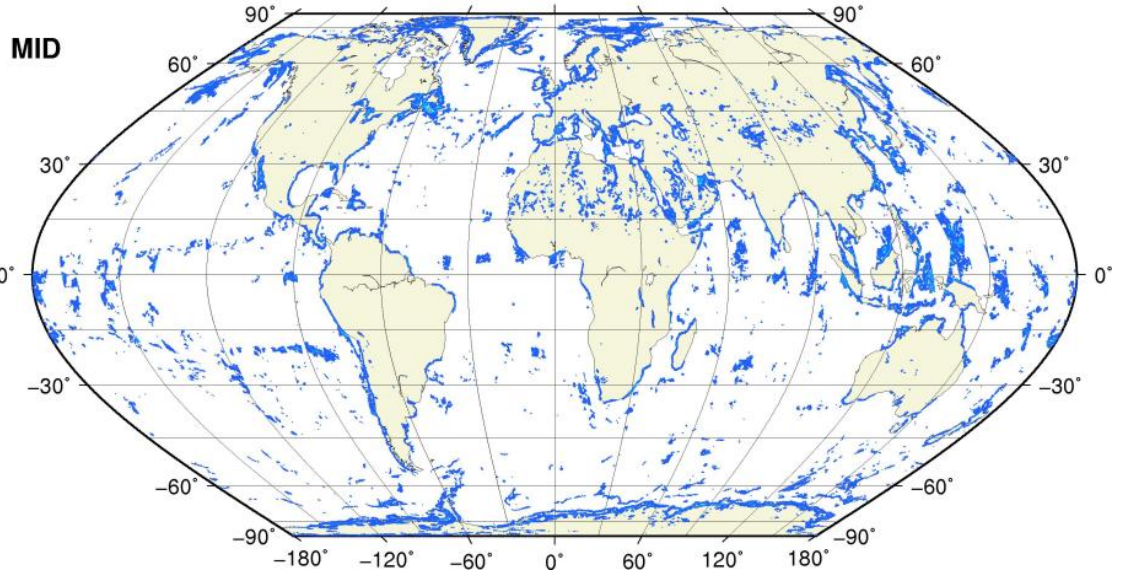
0.1 0.2 0.3 0.4 0.5 0.6 0.7 0.8 0.9 1.0



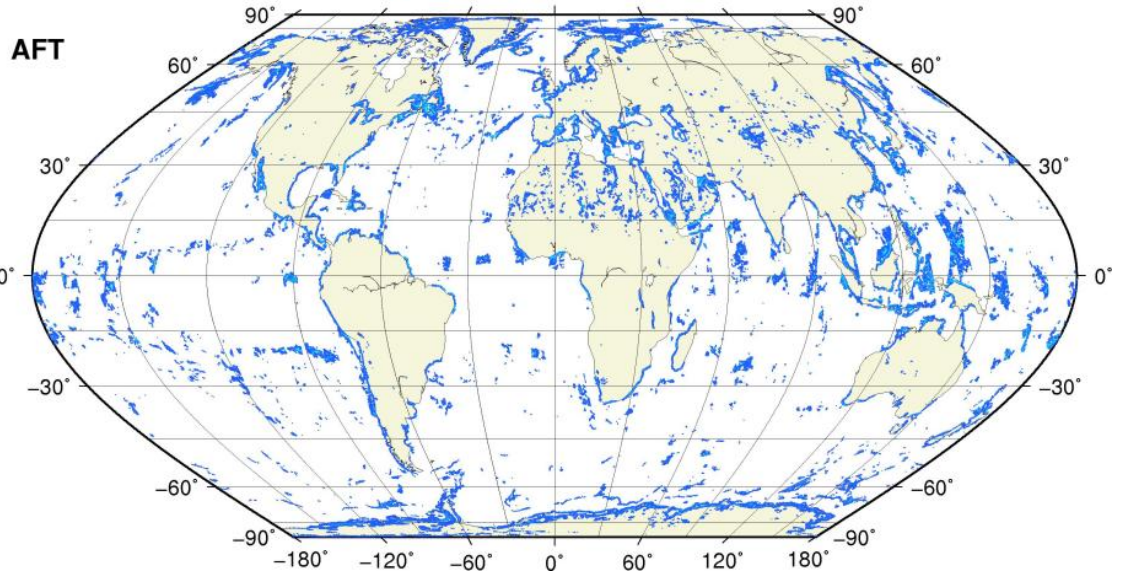
● KP = 1.0 #rec=0



● KP = 1.0 #rec=0



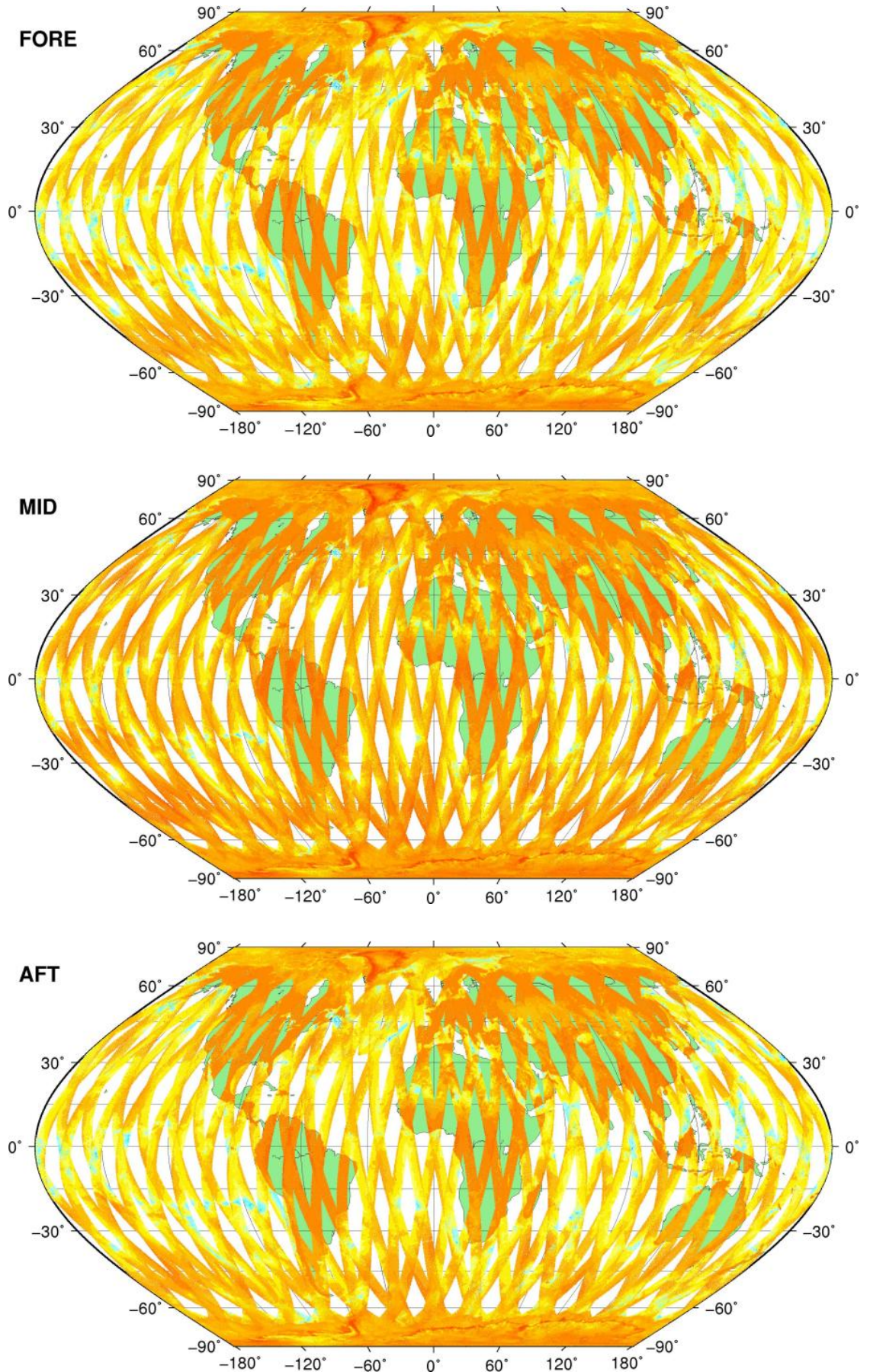
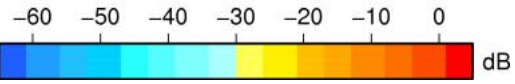
● KP = 1.0 #rec=0



# SZR Product

Sigma0\_TRIP Coverage map

## SIGMA0\_TRIP Coverage

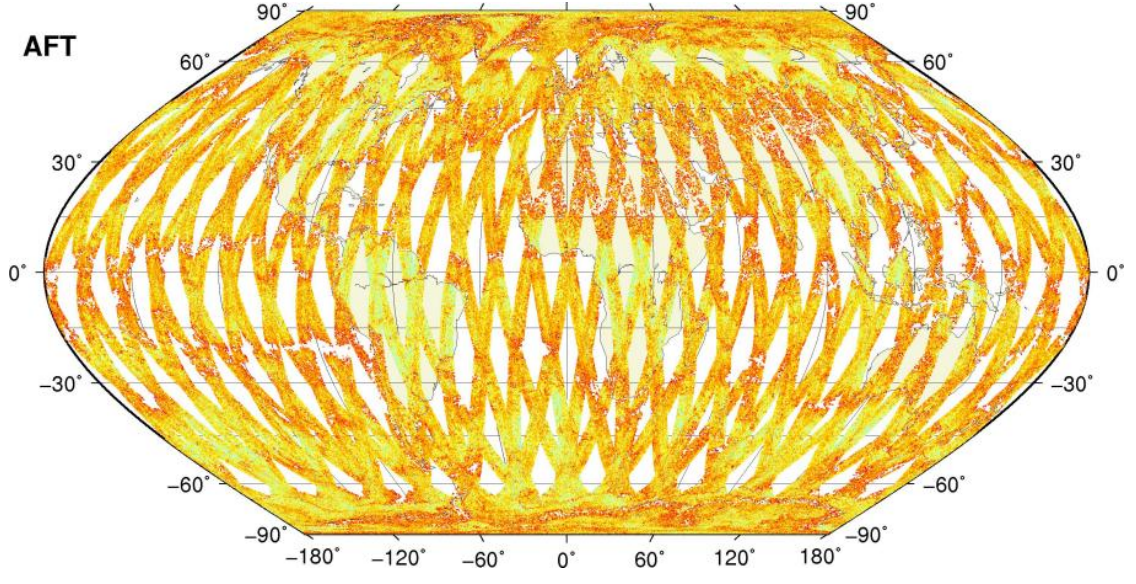
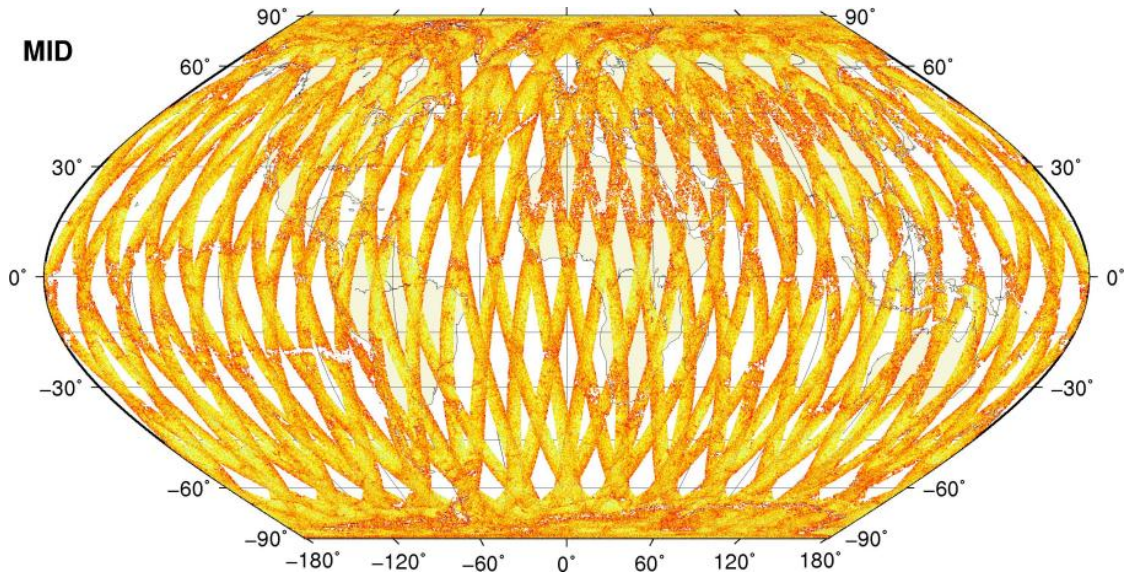
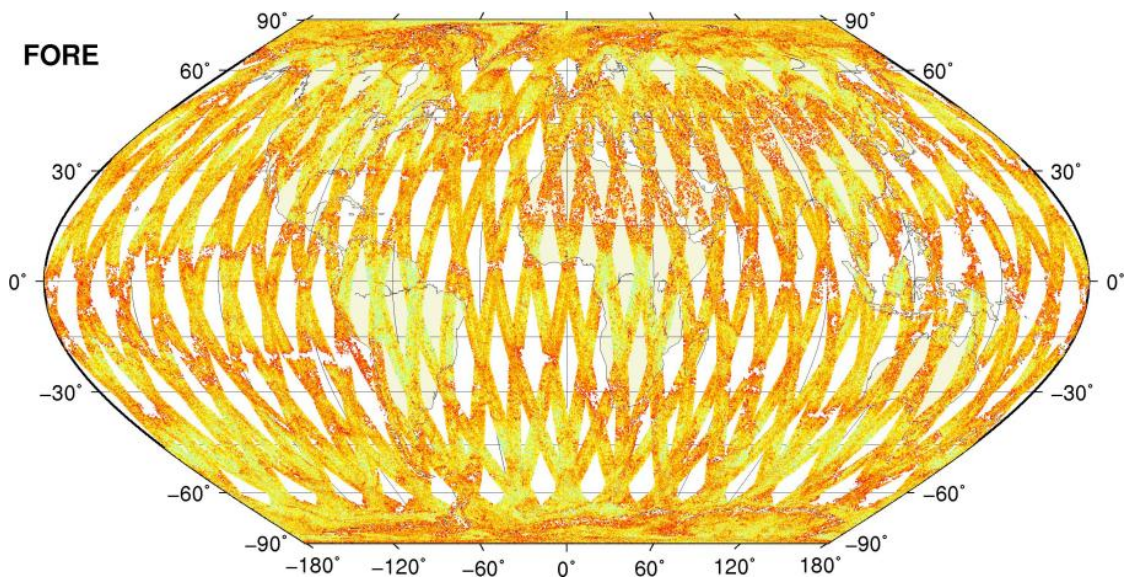
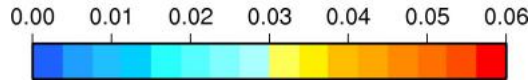




# SZR Product

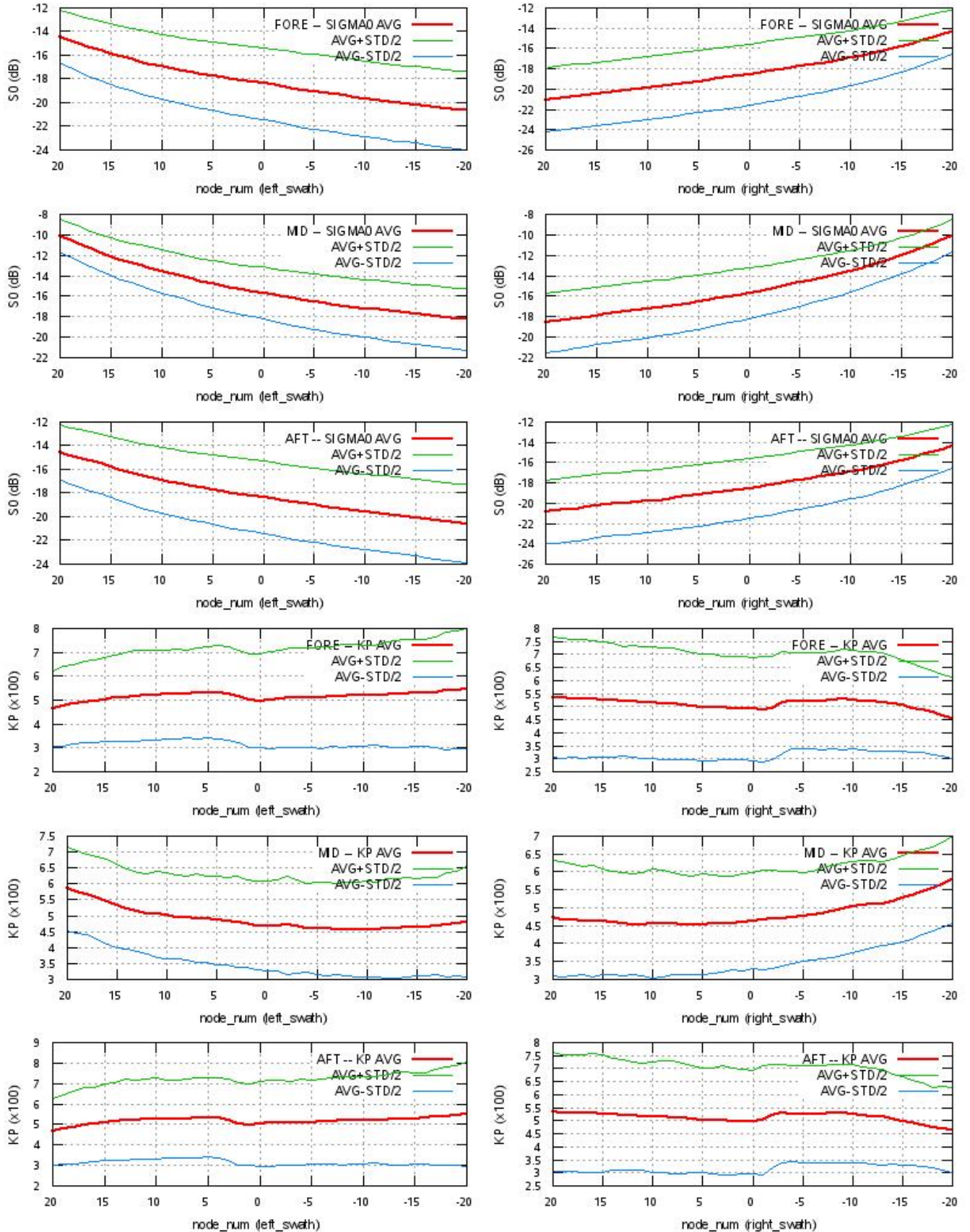
Kp Coverage map

## Kp Coverage



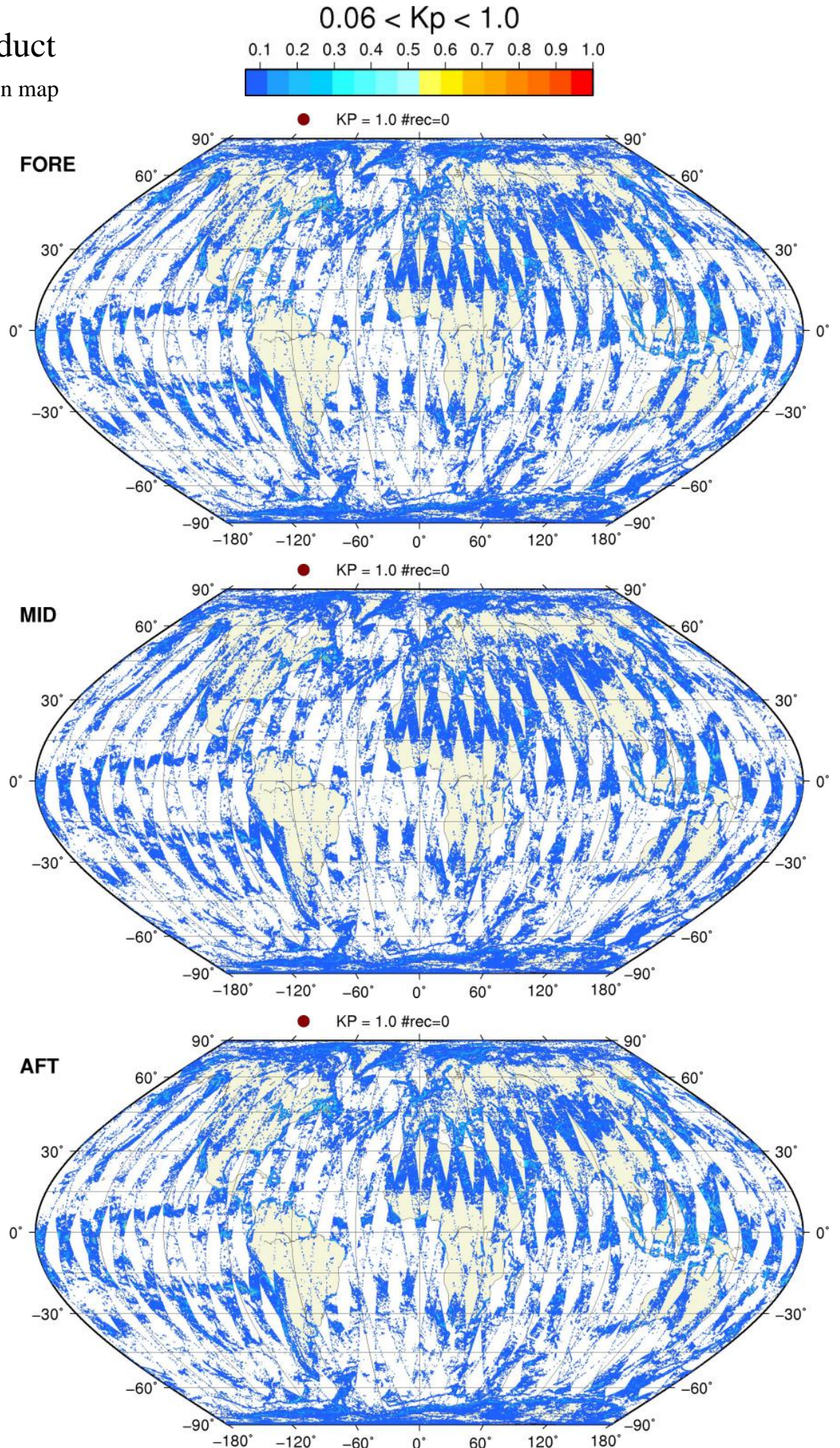
# SZR Product

## S0 - Kp Statistics



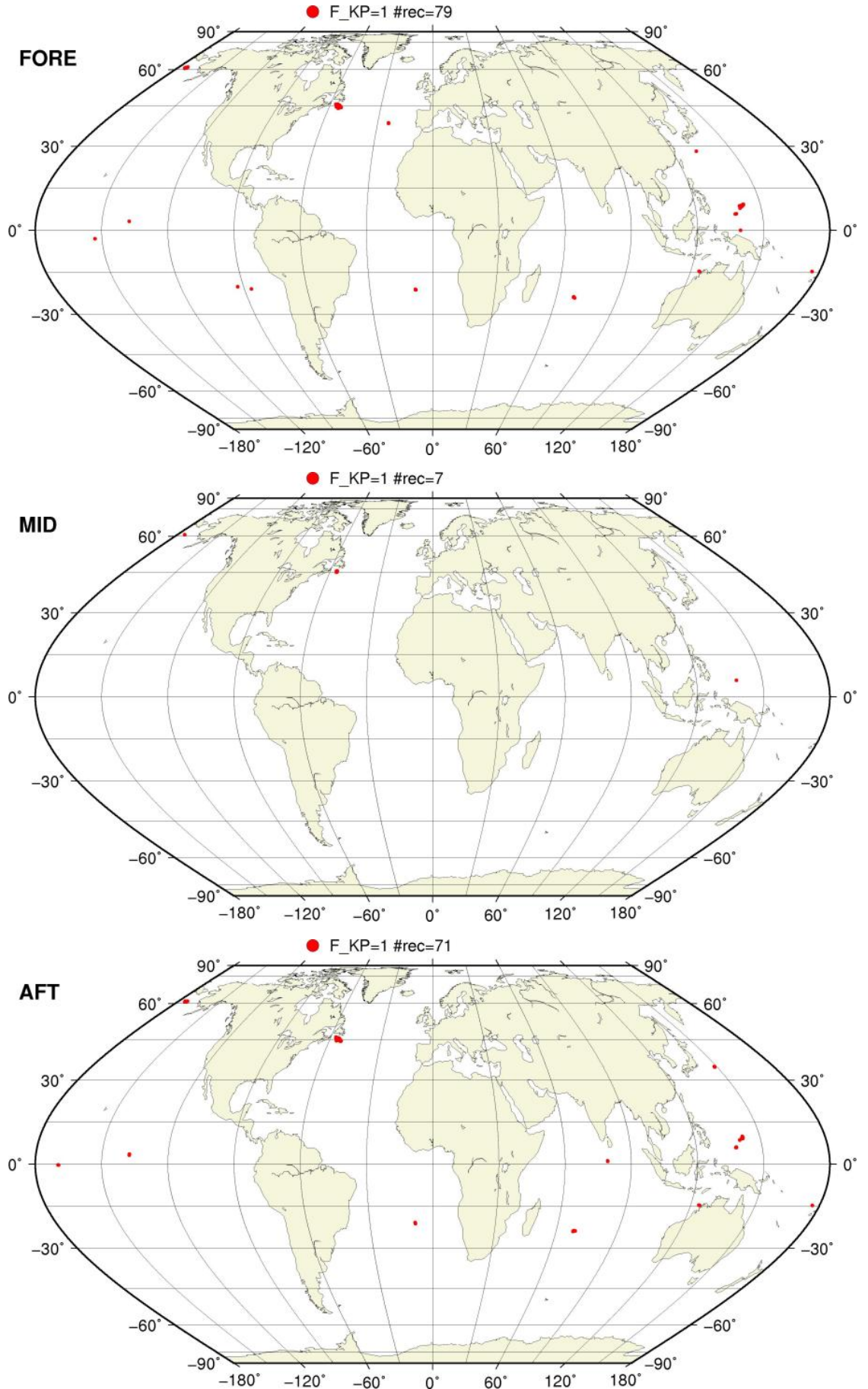
# SZR Product

Kp Outliers on map



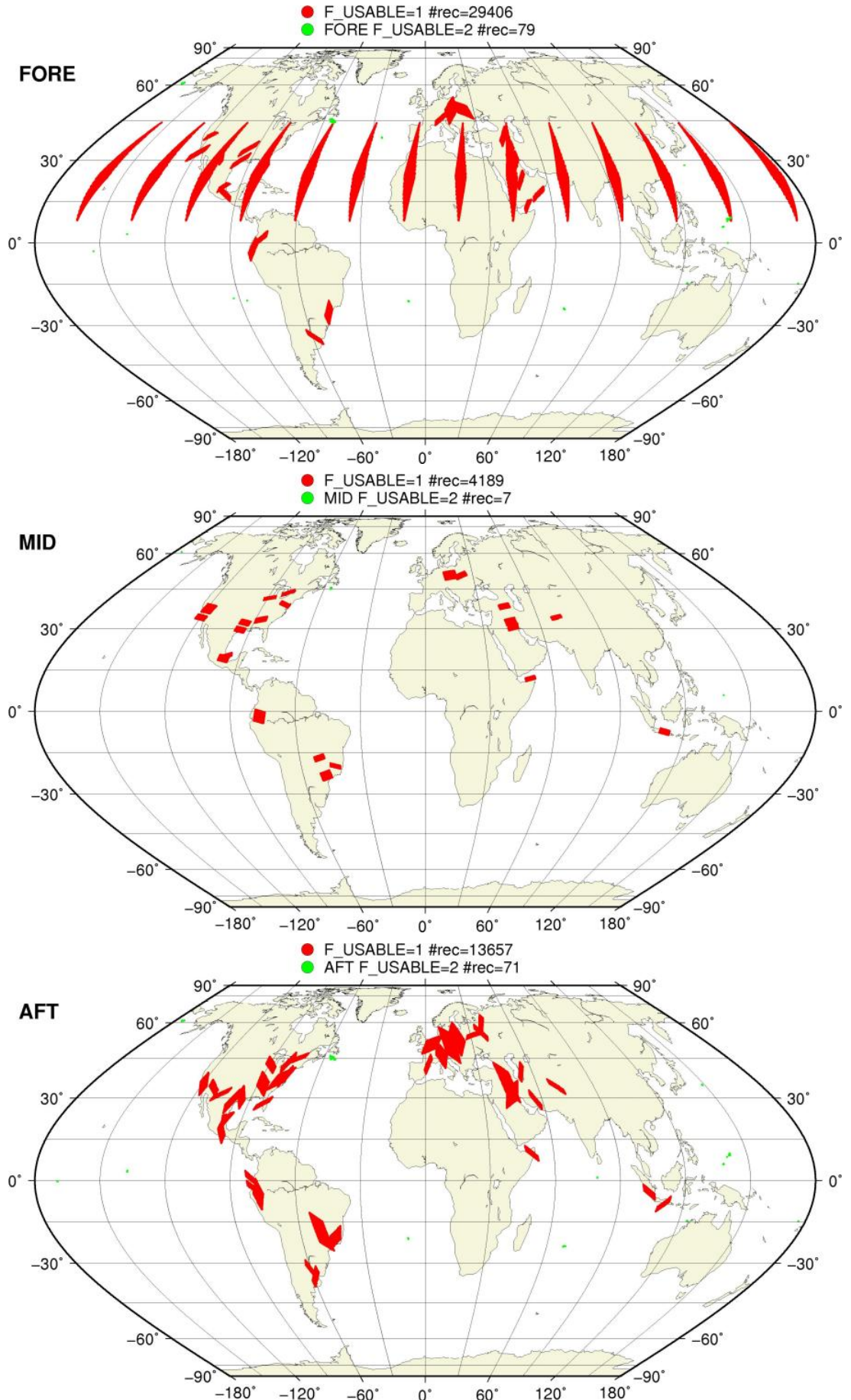
# SZO Flagged Data Coverage

F\_KP = 1 on map



# SZO Flagged Data Coverage

F\_USABLE = 1 or 2 on map



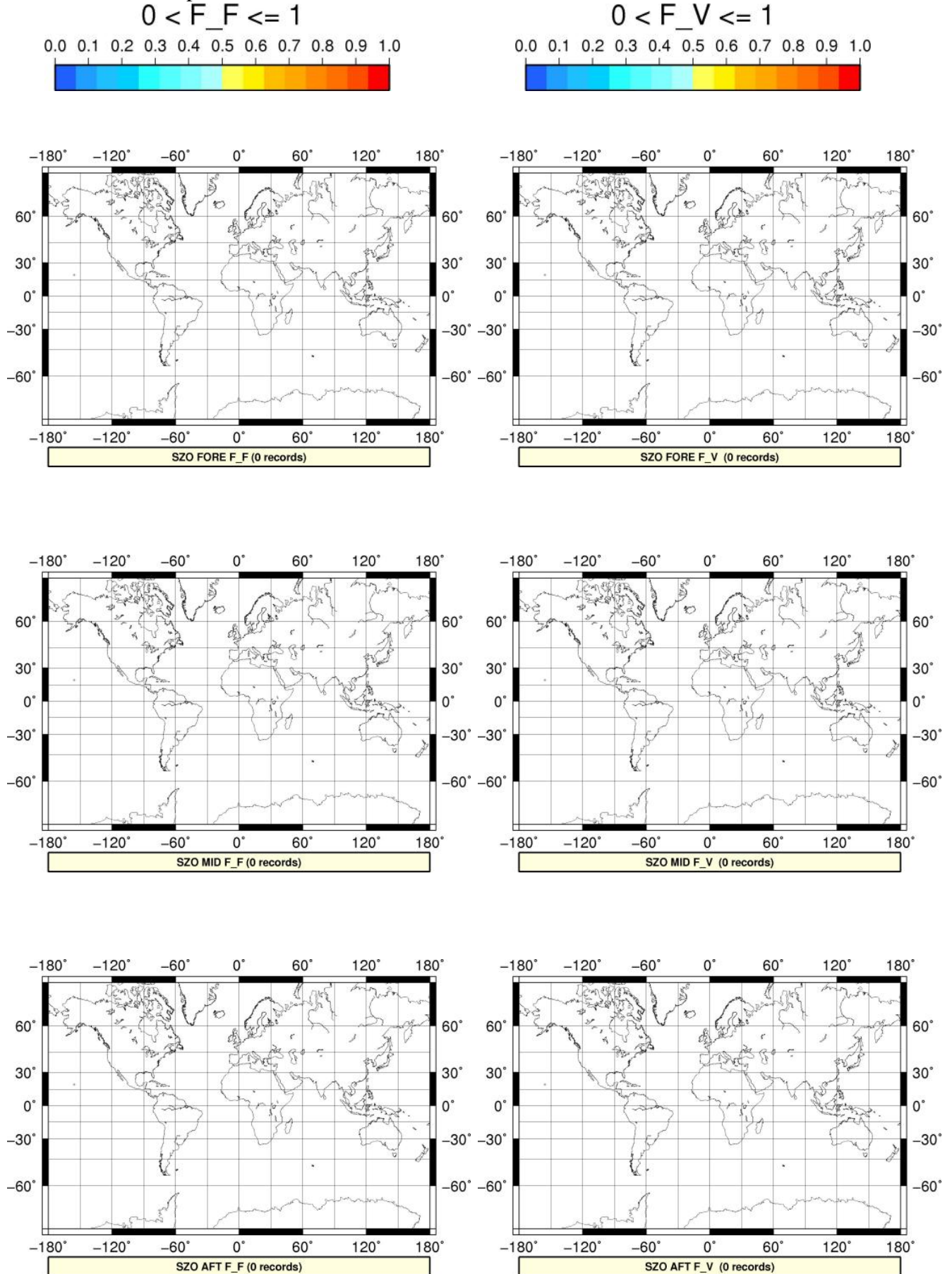
# SZO Flagged Data Coverage

$0 < F_{OA} \leq 1$  on map



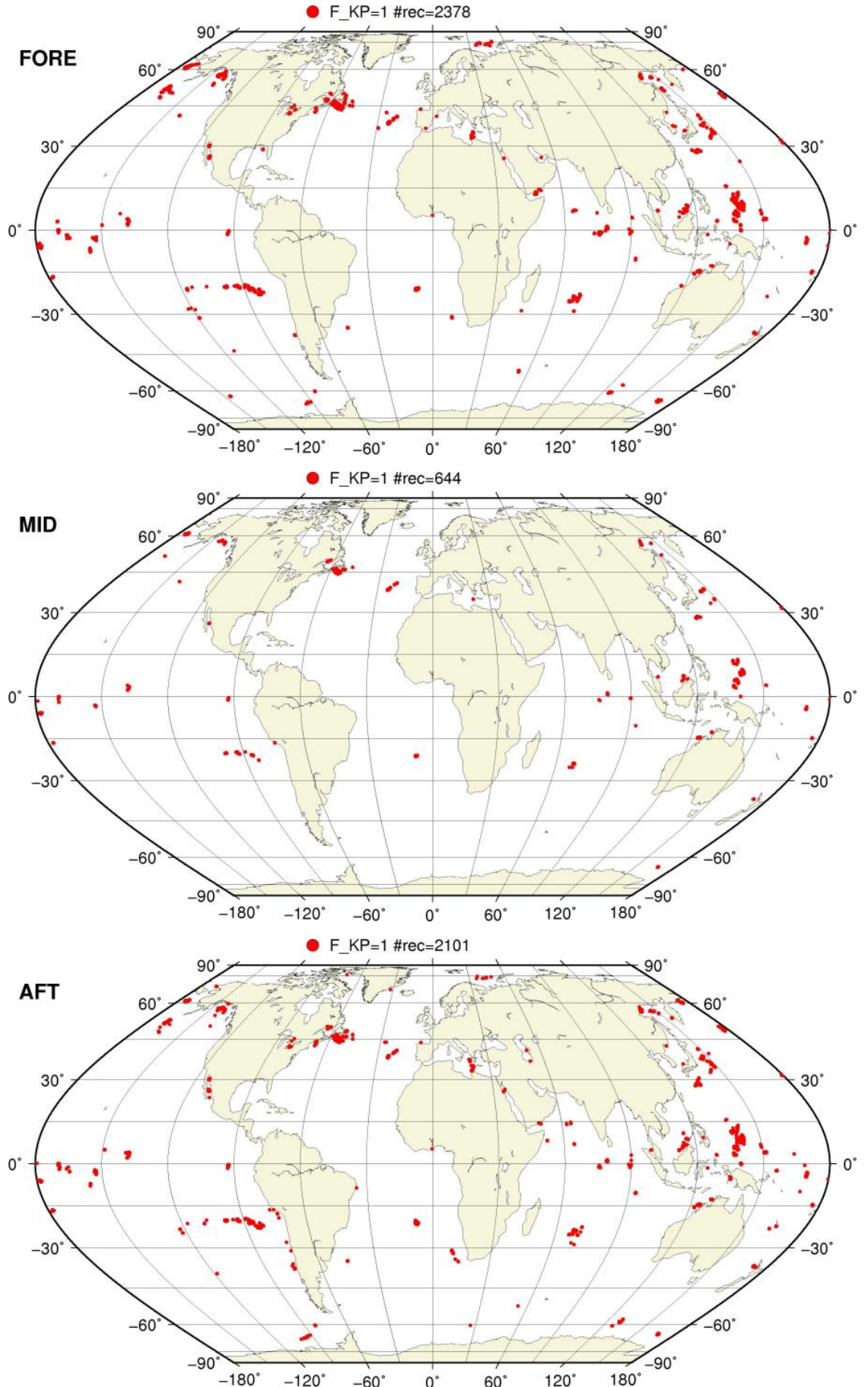
# SZO Flagged Data Coverage

$0 < F_{F/V} \leq 1$  on map



# SZR Flagged Data Coverage

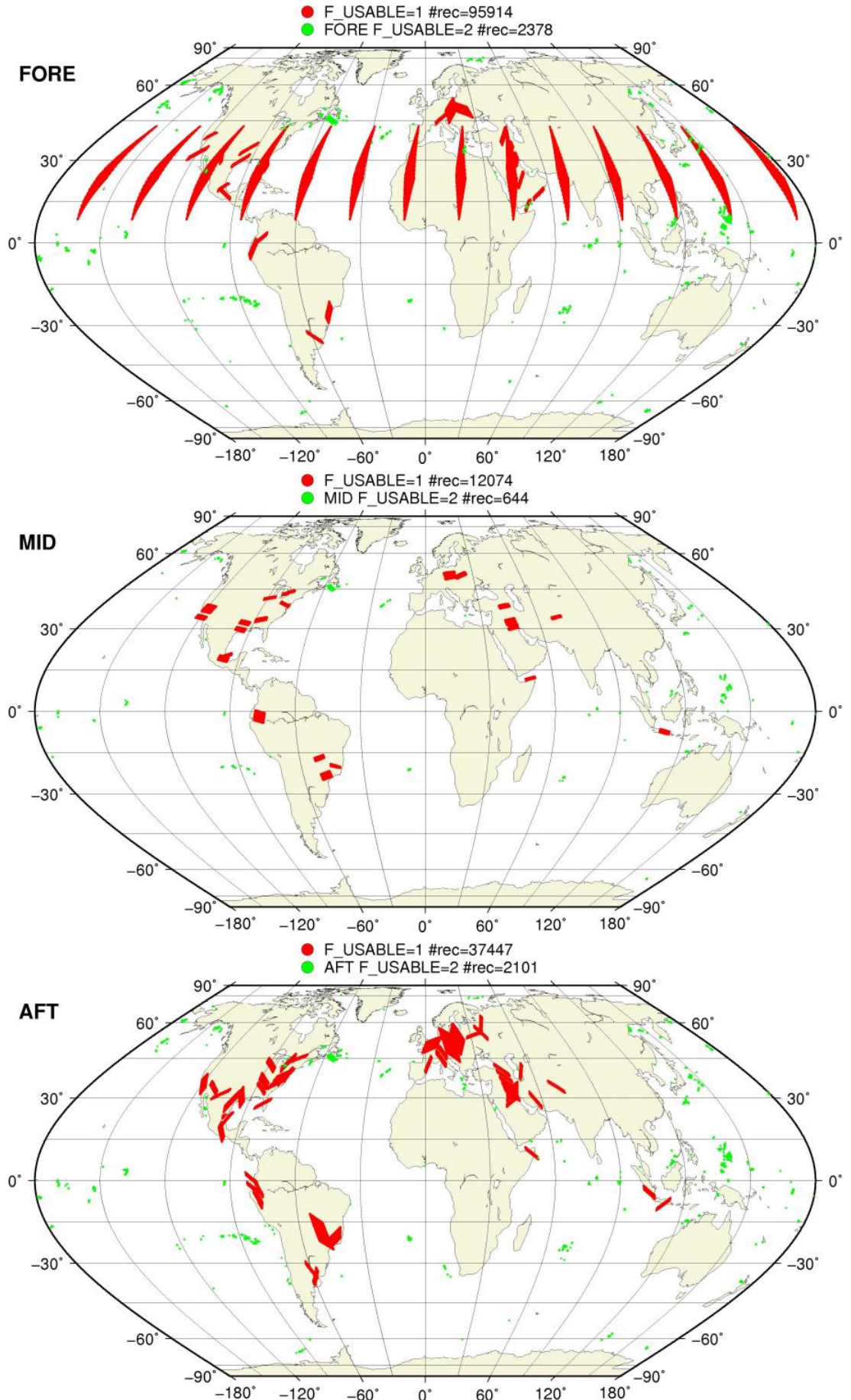
F\_KP = 1 on map





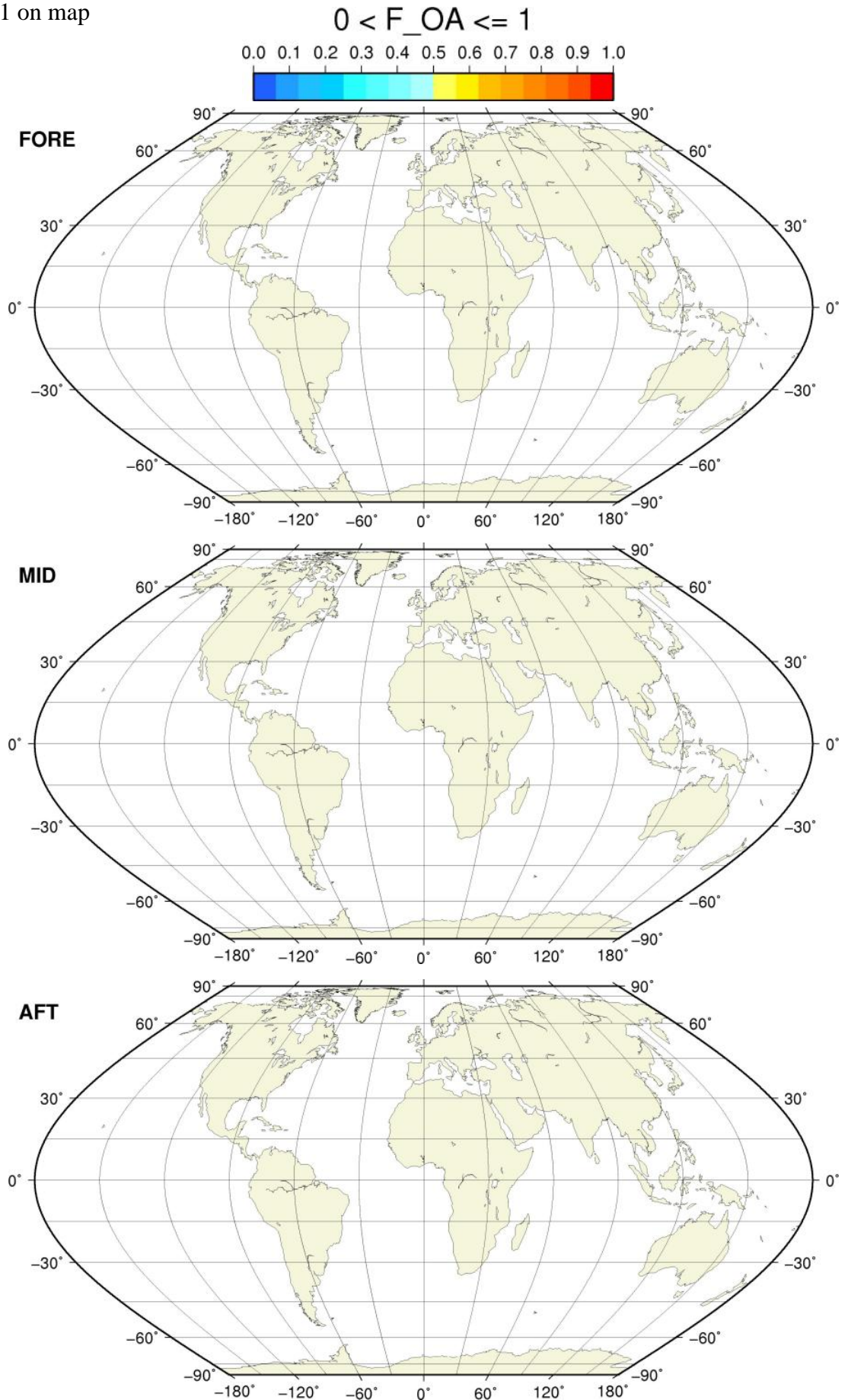
# SZR Flagged Data Coverage

F\_USABLE = 1 or 2 on map



# SZR Flagged Data Coverage

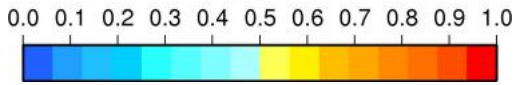
$0 < F_{OA} \leq 1$  on map



# SZR Flagged Data Coverage

$0 < F_{F/V} \leq 1$  on map

$0 < F_F \leq 1$



$0 < F_V \leq 1$

