

# ASCAT DAILY Report

**Metop-A**

**OPE**

**DAY 2013\_262**

**20130919000000 - 20130919235959**

## DATA STATISTICS

BASED ON ORBITS (#15)

35890 35891 35892 35893 35894 35895 35896 35897 35898 35899 35900 35901 35902  
35903 35904 35905

DB STATISTICS : OPE M02\_20130919

SMO	478	2.73	.52	1.61	5.26
SMR	478	3.77	.68	2.70	7.36
SZF	478	.63	1.93	.18	28.38
xxx	478	10.83	1.64	4.76	20.58

INGATE (STORE) STATISTICS : OPE M02\_20130919

xxx_1A	/fbf/tcdras/store/gsl/ASCA_xxx_1A_M02	-- number of files (xxx_1A) : 478
SZO_1B	/fbf/tcdras/store/gsl/ASCA_SZO_1B_M02	-- number of files (SZO_1B) : 478
SZR_1B	/fbf/tcdras/store/gsl/ASCA_SZR_1B_M02	-- number of files (SZR_1B) : 478
SZF_1B	/fbf/tcdras/store/gsl/ASCA_SZF_1B_M02	-- number of files (SZF_1B) : 478
SMO_02	/fbf/tcdras/store/gsl/ASCA_SMO_02_M02	-- number of files (SMO_02) : 478
SMR_02	/fbf/tcdras/store/gsl/ASCA_SMR_02_M02	-- number of files (SMR_02) : 478

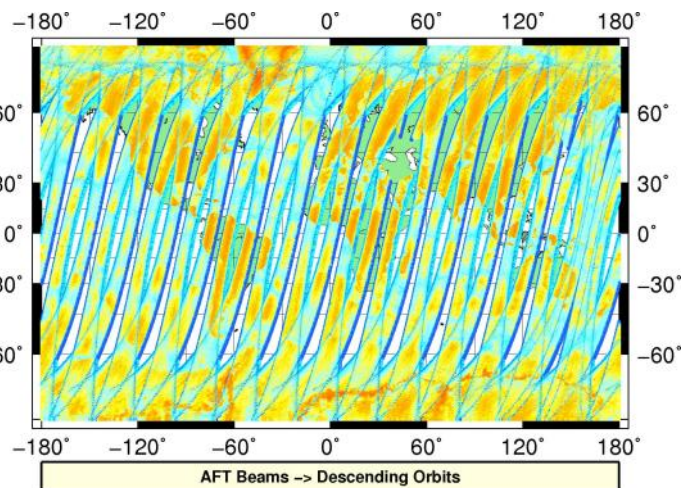
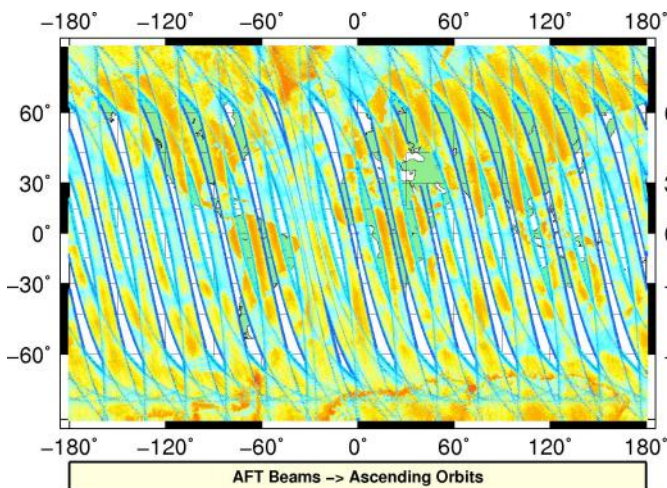
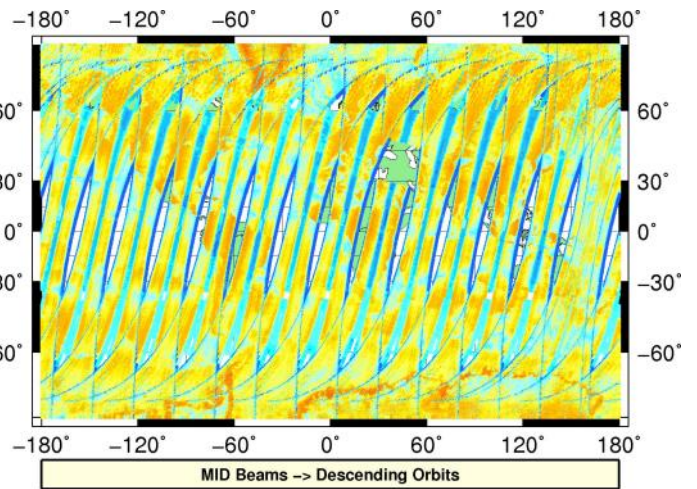
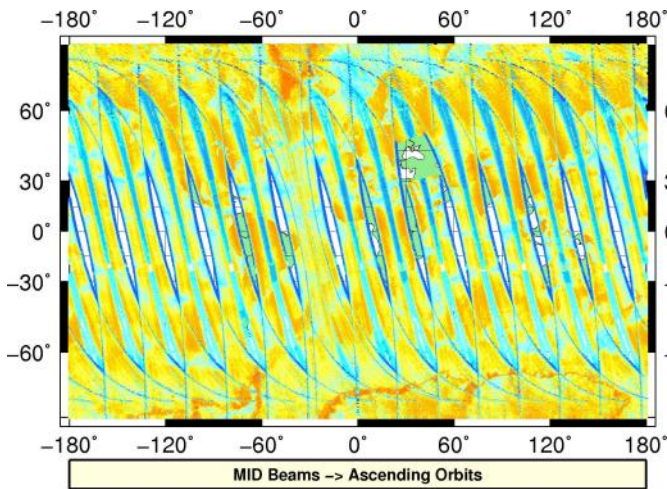
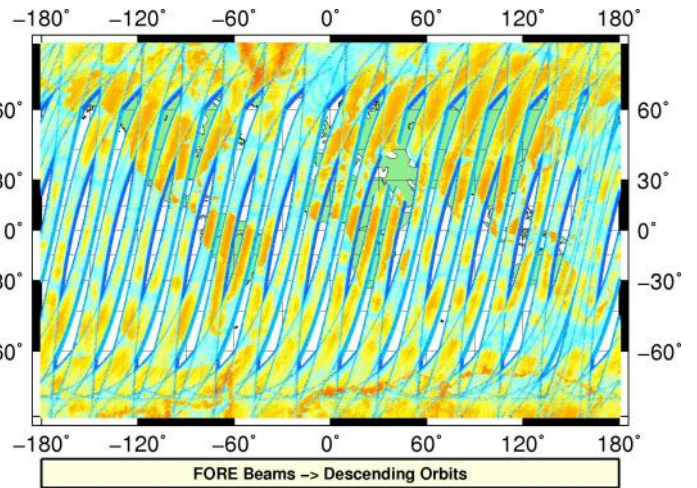
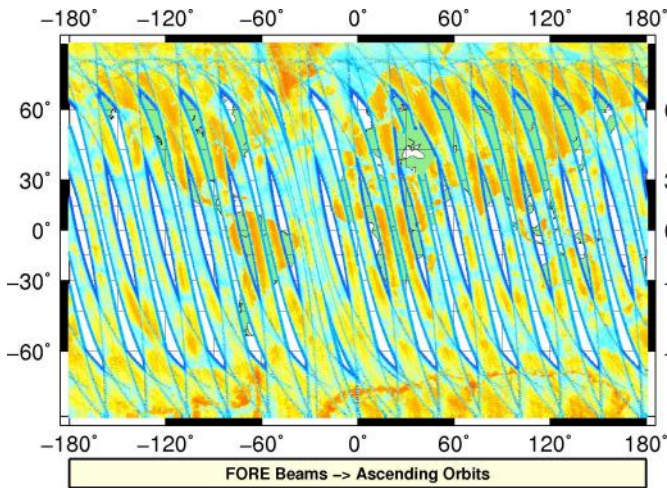
# Overview

## Configuration and SPHR content

Parameter	Value
SENSING START-STOP	20130919000000 - 20130919235959
ORBIT START-STOP	-
SATELLITE	M02
SW - DPU Version	3.9 (57)
SW - ICU Version	2.03 (35)
PARAM - Drive Level ID	0 (Nominal drive level as defined in the active DPU Data Set)
PARAM - DPU Data Set ID	4
PARAM - Revision ID	0
INST - Table Set ID	0 (no calibration, nominal table set used)
INST - Redundancy Config	127
	nominal ICU
	nominal DPU
	nominal RFU
	nominal HPA
	nominal SFE
	nominal SFE LNA
	nominal signal path (from HPA_B)
N_L1A_MDR	605448
N_L1A_MDR_B0	100908
N_L1A_MDR_B1	100908
N_L1A_MDR_B2	100908
N_L1A_MDR_B3	100908
N_L1A_MDR_B4	100908
N_L1A_MDR_B5	100908
N_GAPS	0
TOTAL_GAPS_SIZE	0
N_HKTM_PACKETS_RECEIVED	0
N_F_NOISE	0
N_F_PG	0
N_V_PG	0
N_F_FILTER	0
N_V_FILTER	0
N_F_PGP	0
N_F_NP	0
N_F_ORBIT	0
N_F_ATTITUDE	0
N_F_OMEGA	0
N_F_MAN	0
N_F_OSV	0
N_F_E_TEL_PRES	0
N_F_E_TEL_IR	0
N_F_CE	0
N_V_CE	0
N_F_OA	1054661
N_F_TEL	48645858
N_F_REF	3274863
N_F_SA	0
N_F_LAND	0
N_F_GEO	0
N_F_SIGN	0
N_L1B_MDR	0
N_EMPTY_S0_TRIP	0
N_L1B_MDR_F	0
N_EMPTY_S0_TRIP_F	0
N_L1B_MDR_M	0

# L1A Product

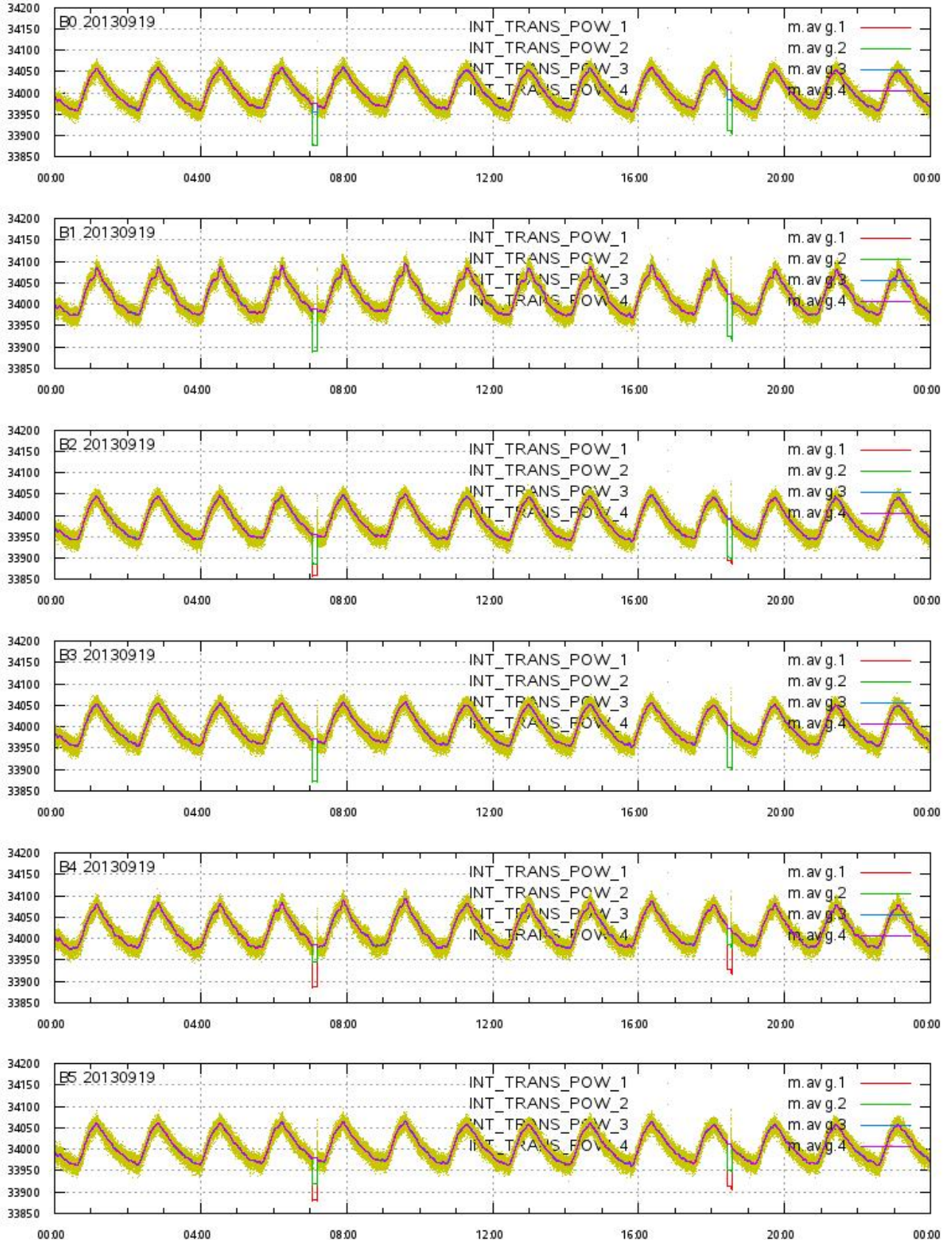
## Echo Data Coverage maps





# L1A Product

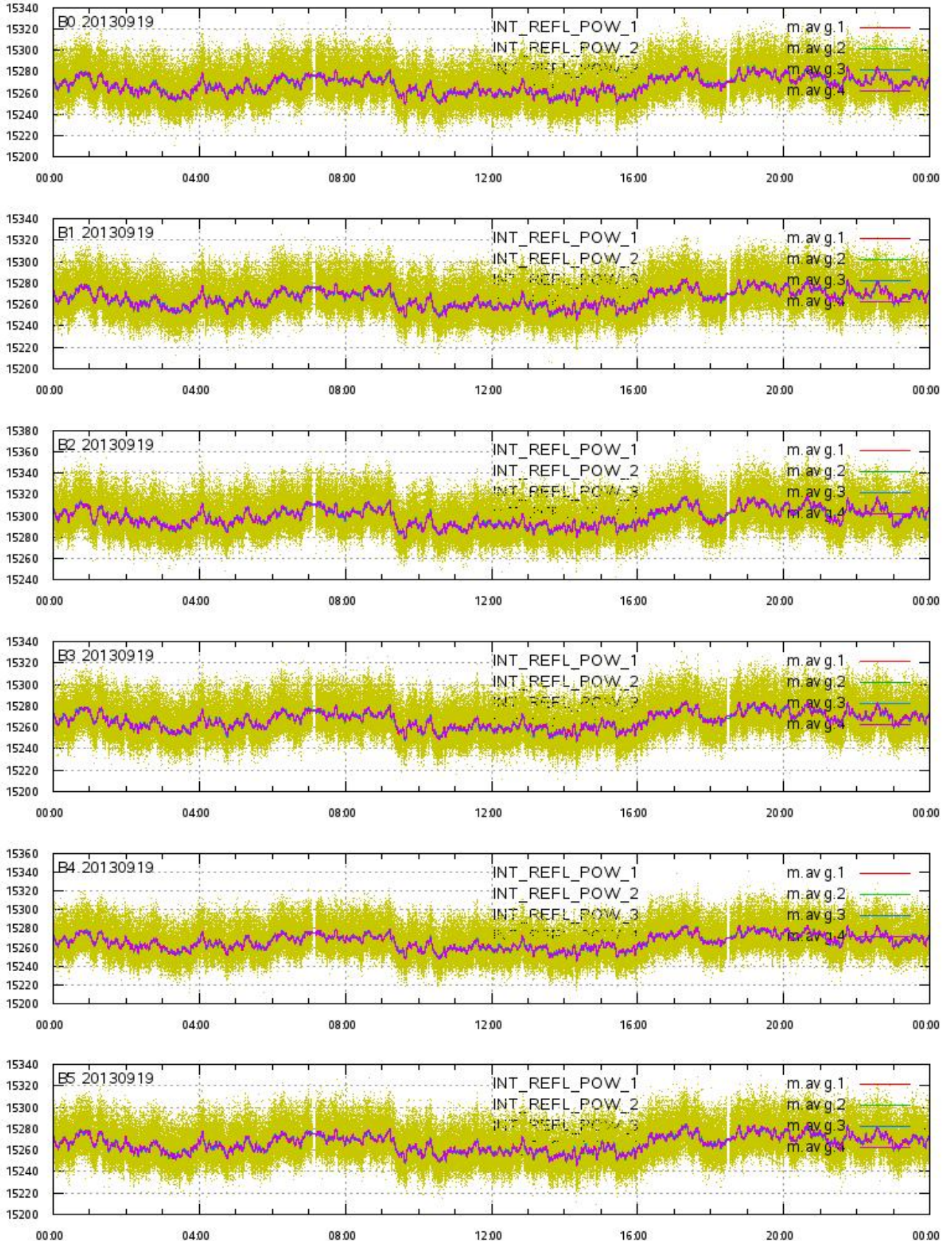
## Integrated Transmitted Powers 1-4 per beam 0-5 vs. UTC\_LOCALISATION





# L1A Product

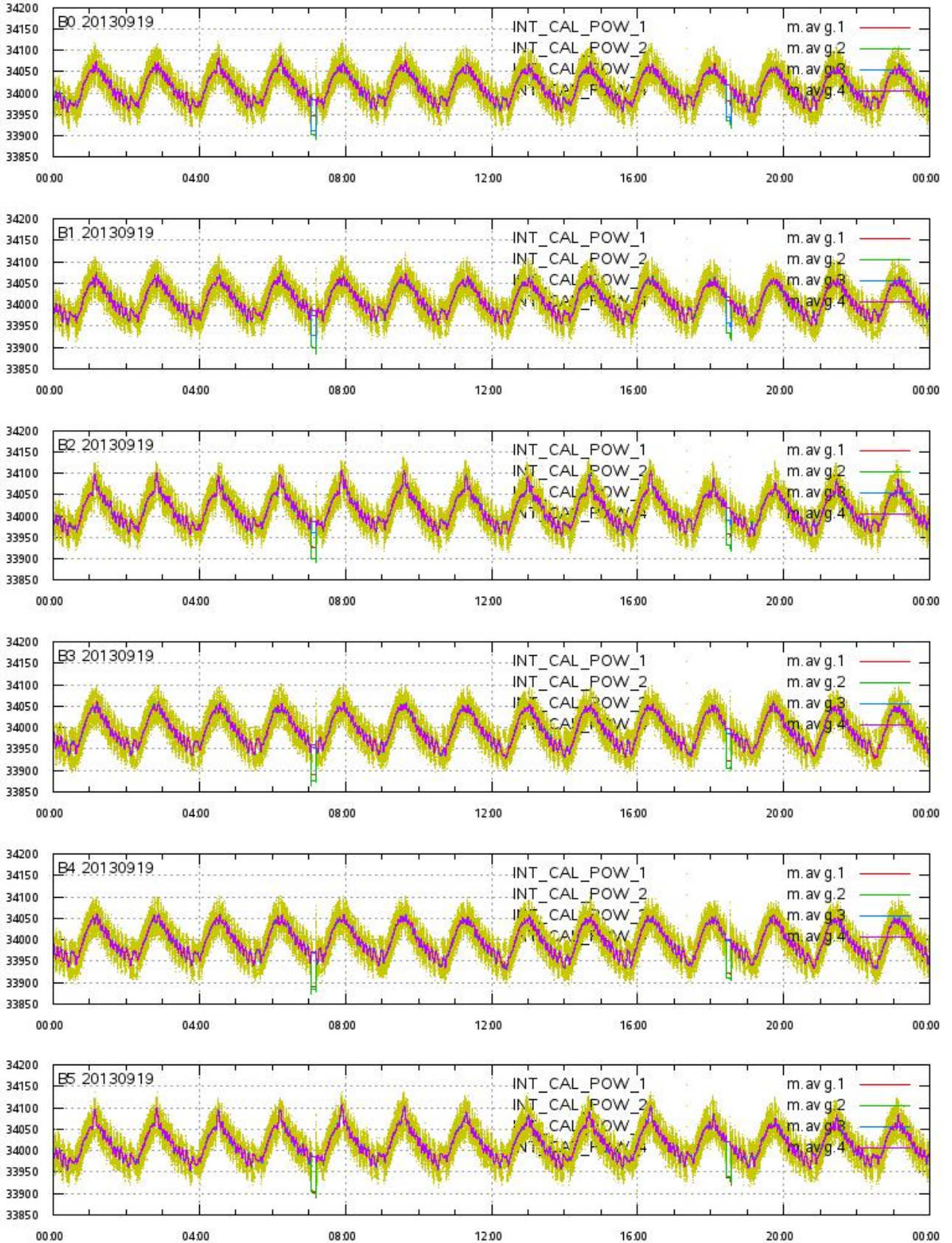
## Integrated Reflected Powers 1-4 per beam 0-5 vs. UTC\_LOCALISATION





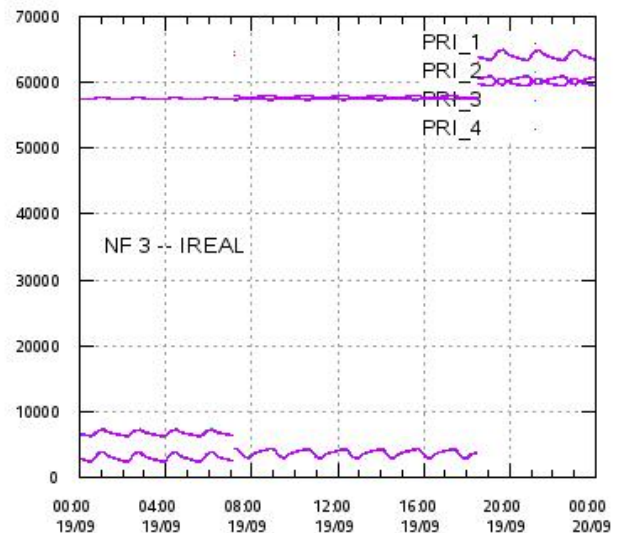
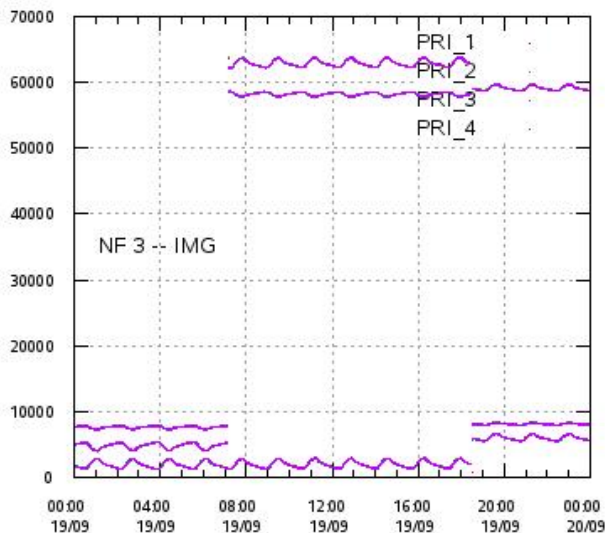
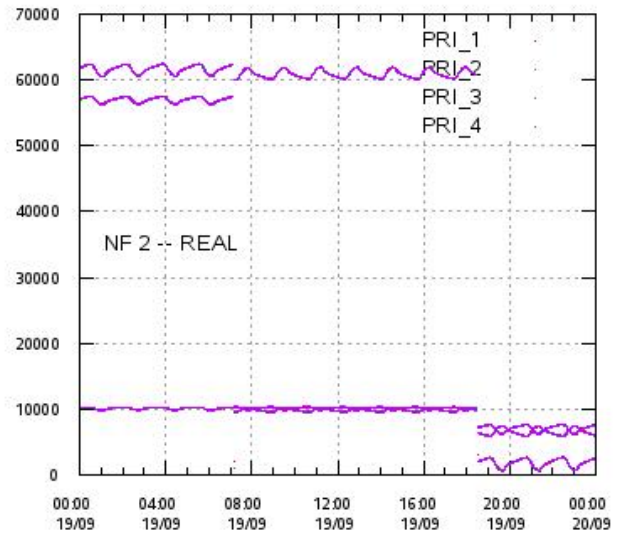
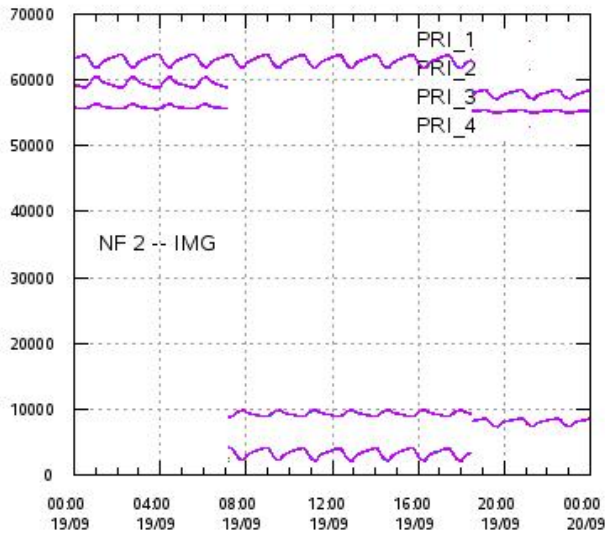
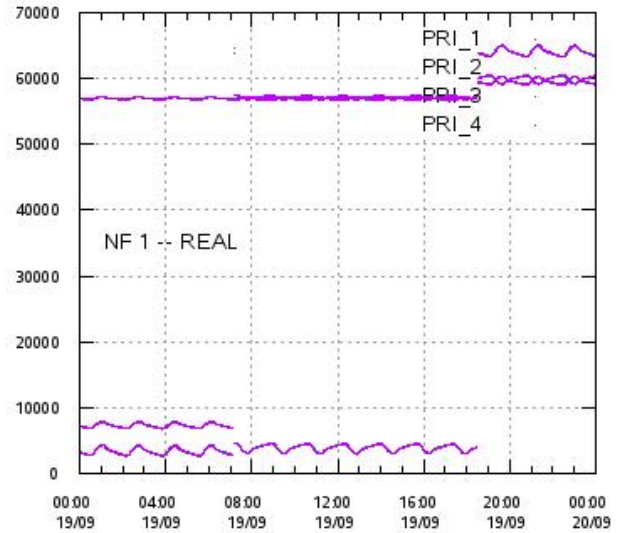
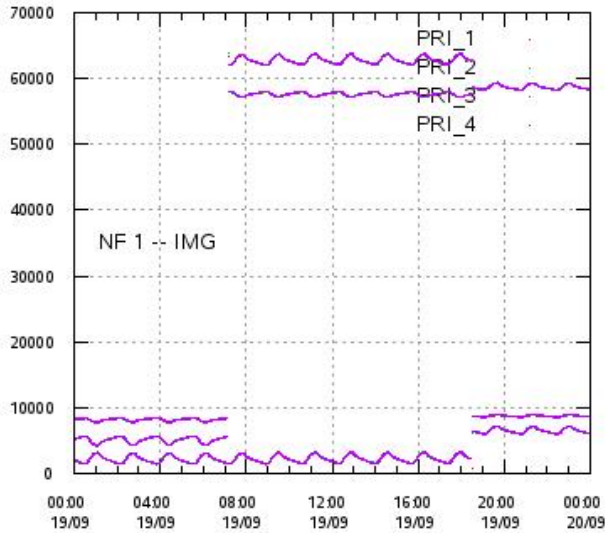
# L1A Product

## Integrated Calibration Powers 1-4 per beam 0-5 vs. UTC\_LOCALISATION



# L1A Product

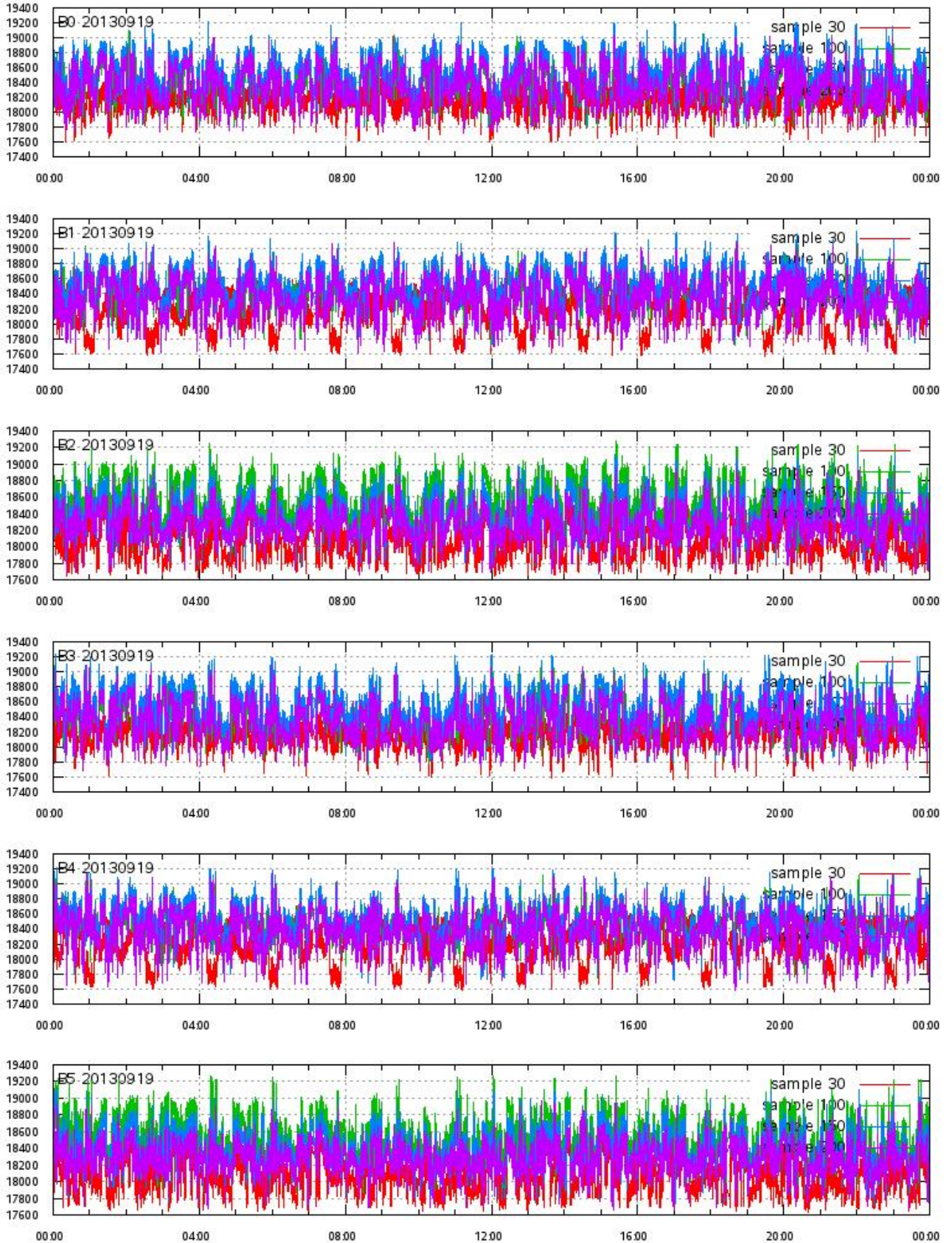
## Calibration Powers vs. UTC\_LOCALISATION





# L1A Product

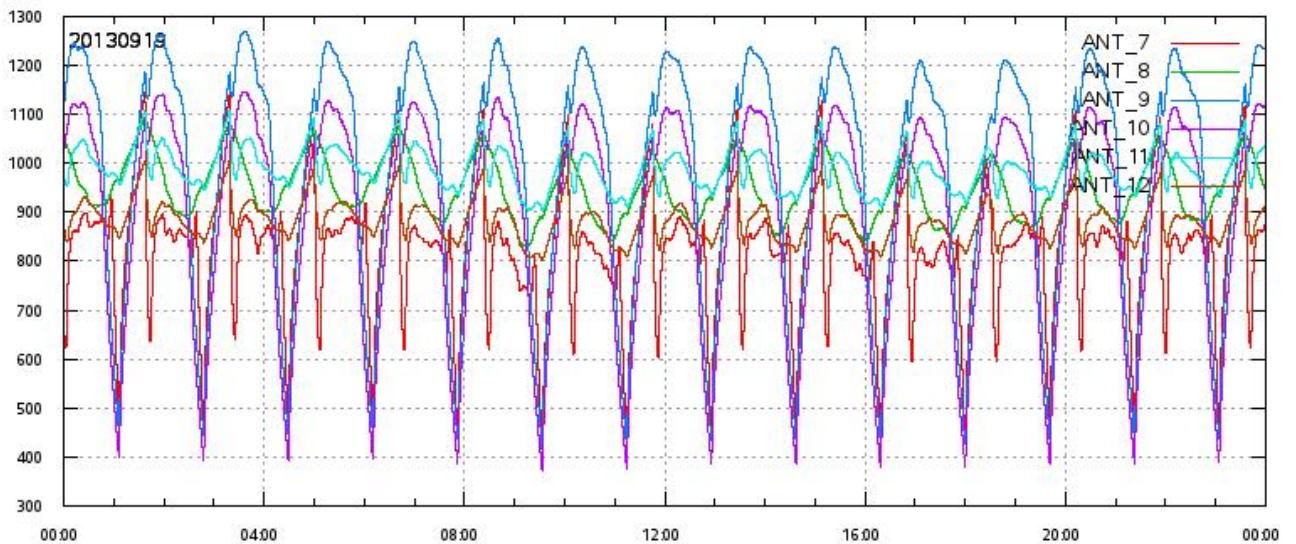
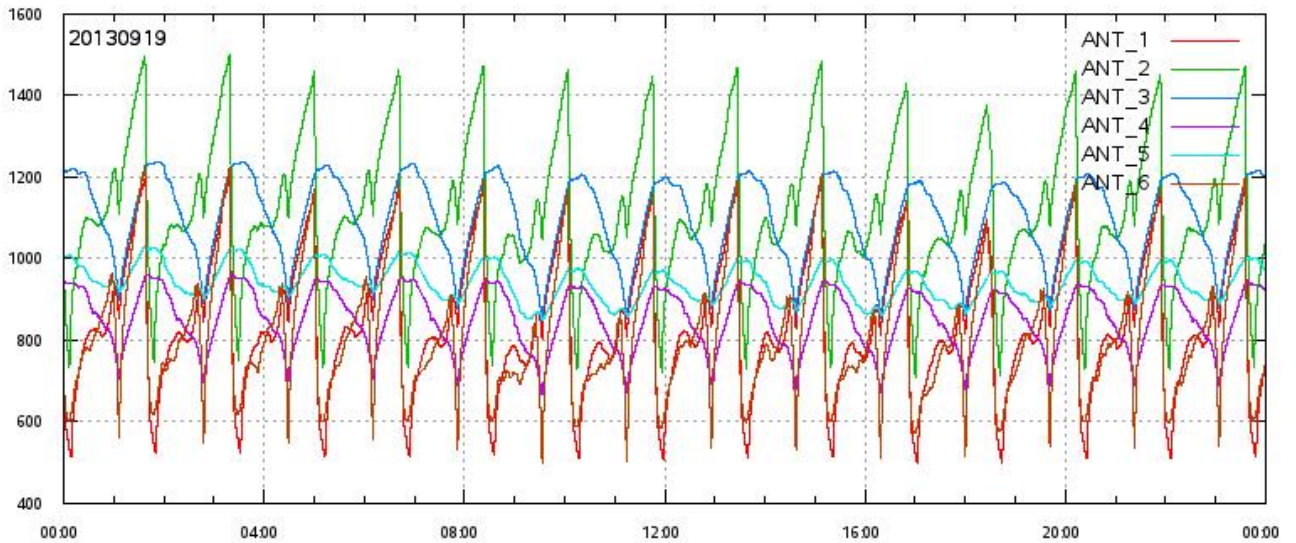
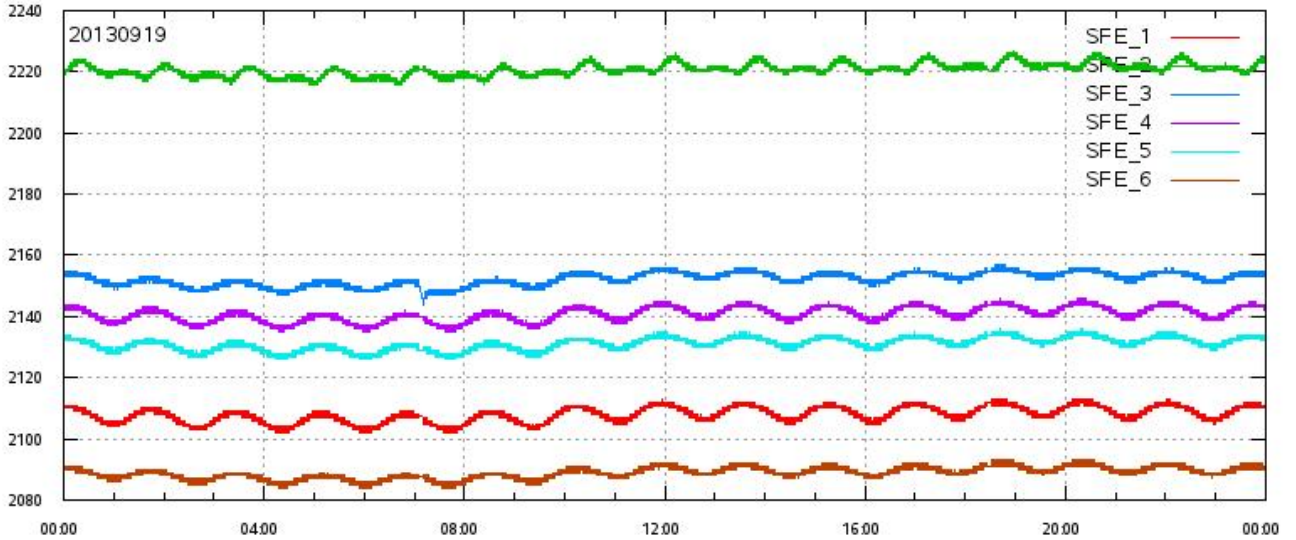
ECHO DATA (raw) for samples 30, 100, 150 and 200 vs. UTC\_LOCALISATION





# L1A Product

SFE & ANT Temperatures (raw) vs. UTC\_LOCALISATION

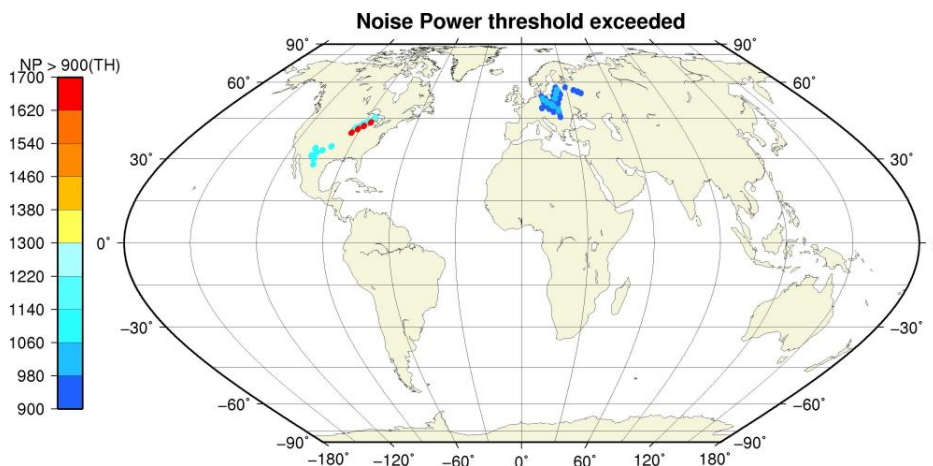
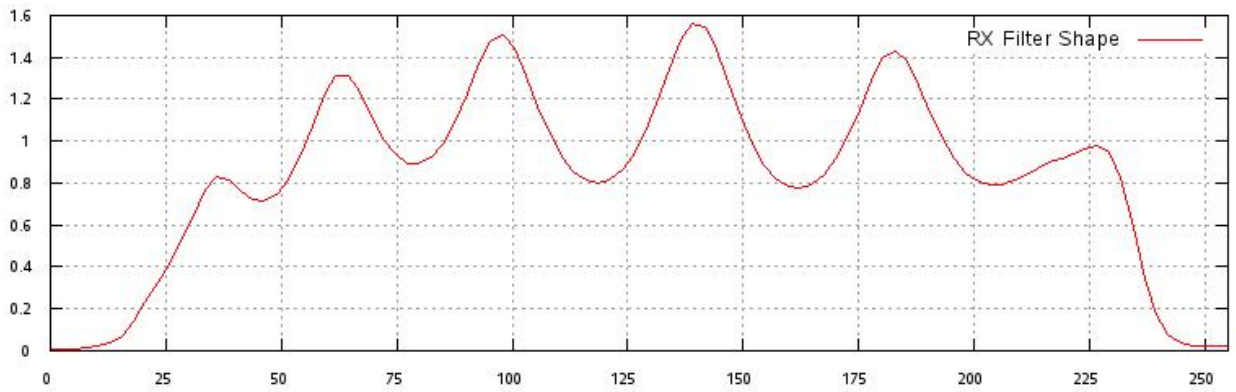
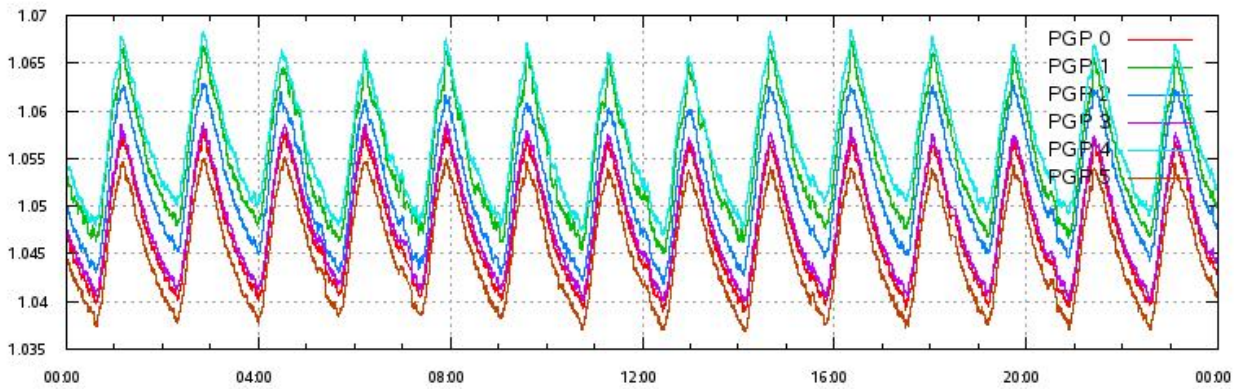
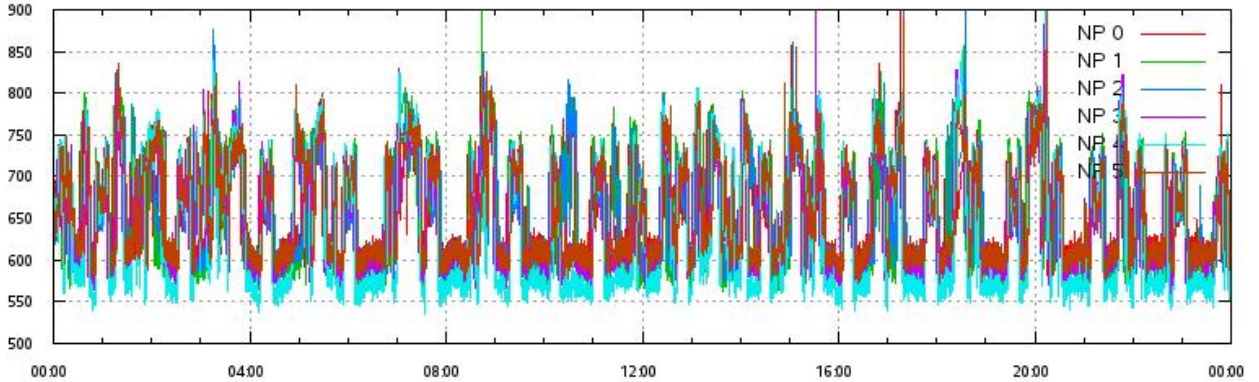


# L1A Product

Noise Power & Power Gain Product per beam 0-5 vs. UTC\_LOCALISATION

RX Filter Shape average over sample number

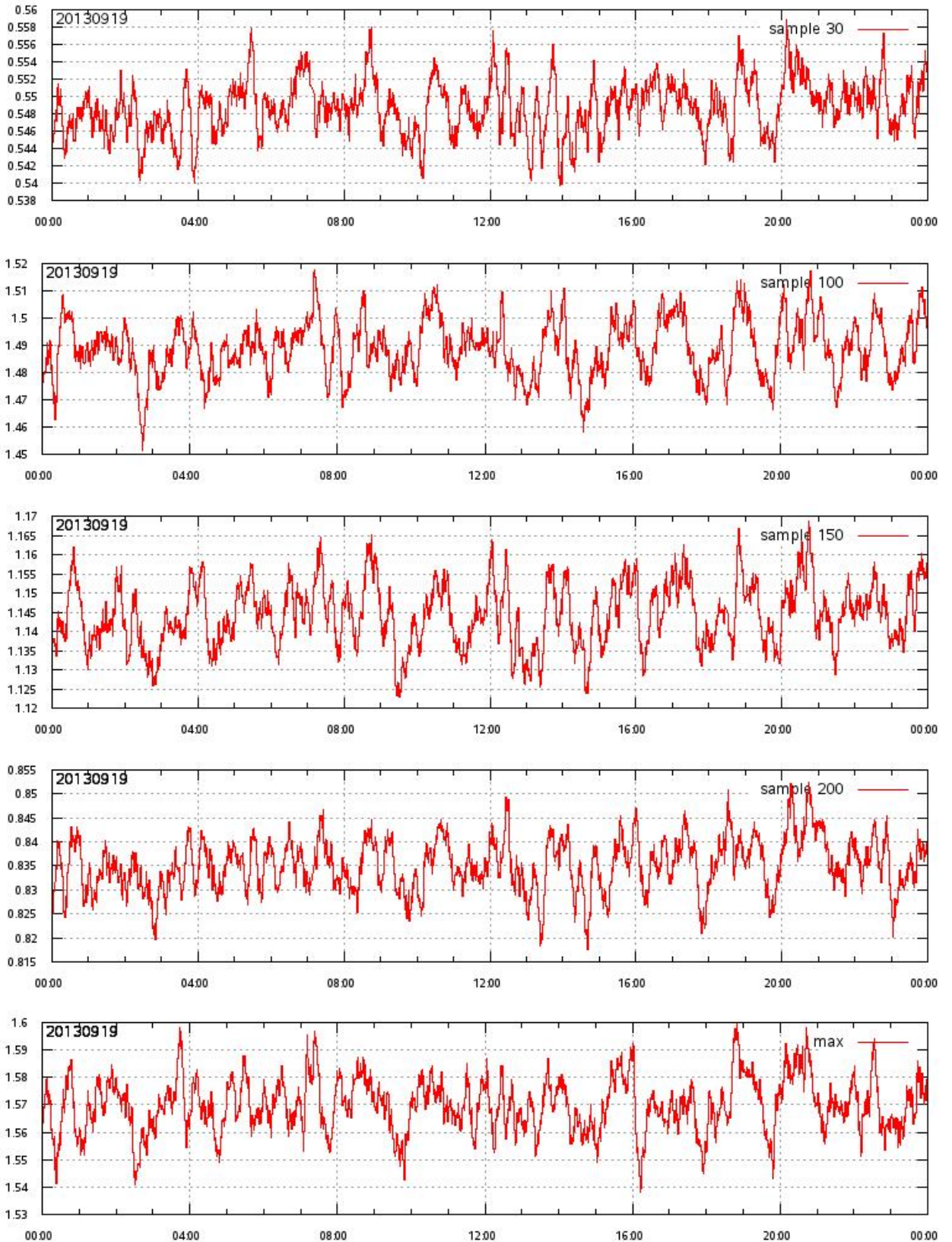
Noise Power threshold exceeded (TH=900) on map





# L1A Product

RX filter shape in detail for sample 30,100,150, 200 & max vs. UTC\_LOCALISATION

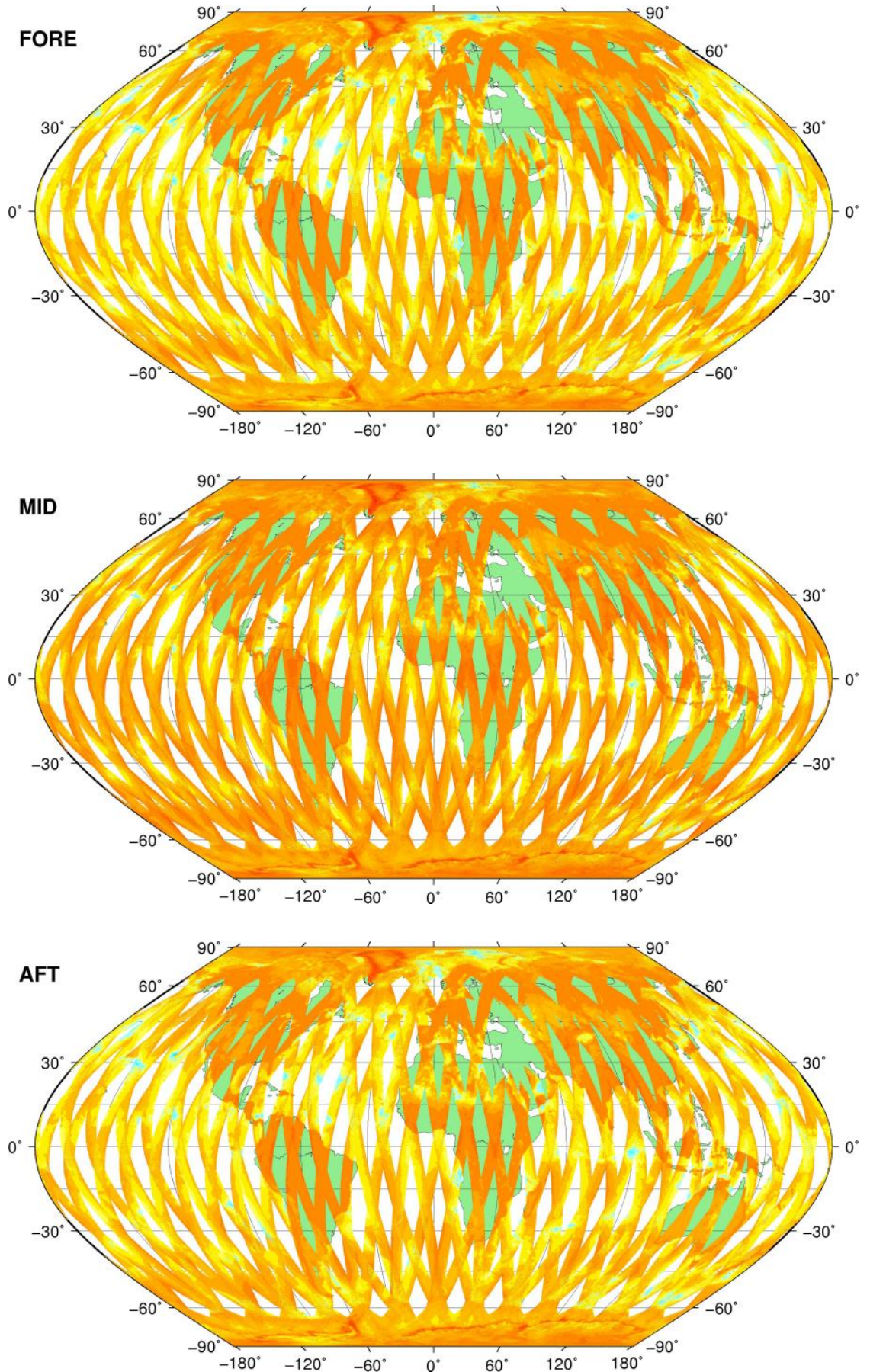




# SZO Product

Sigma0\_TRIP Coverage map

## SIGMA0\_TRIP Coverage

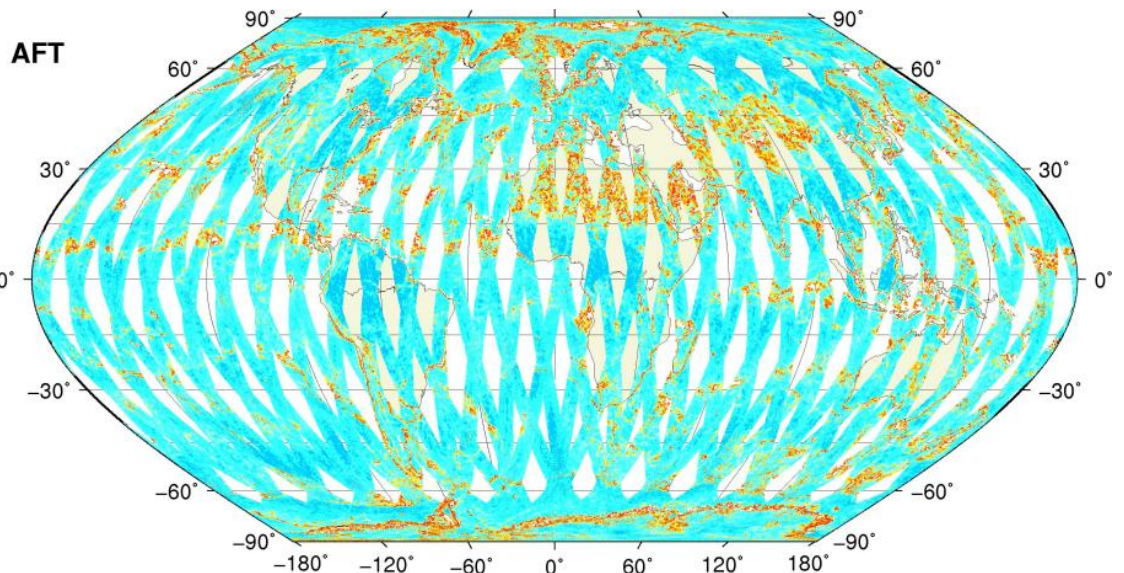
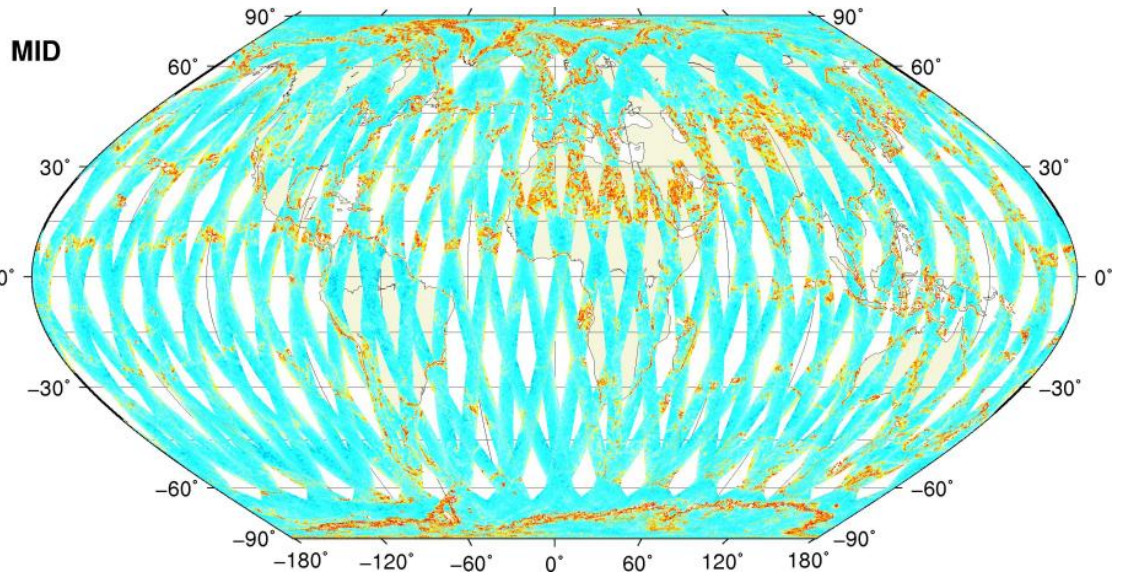
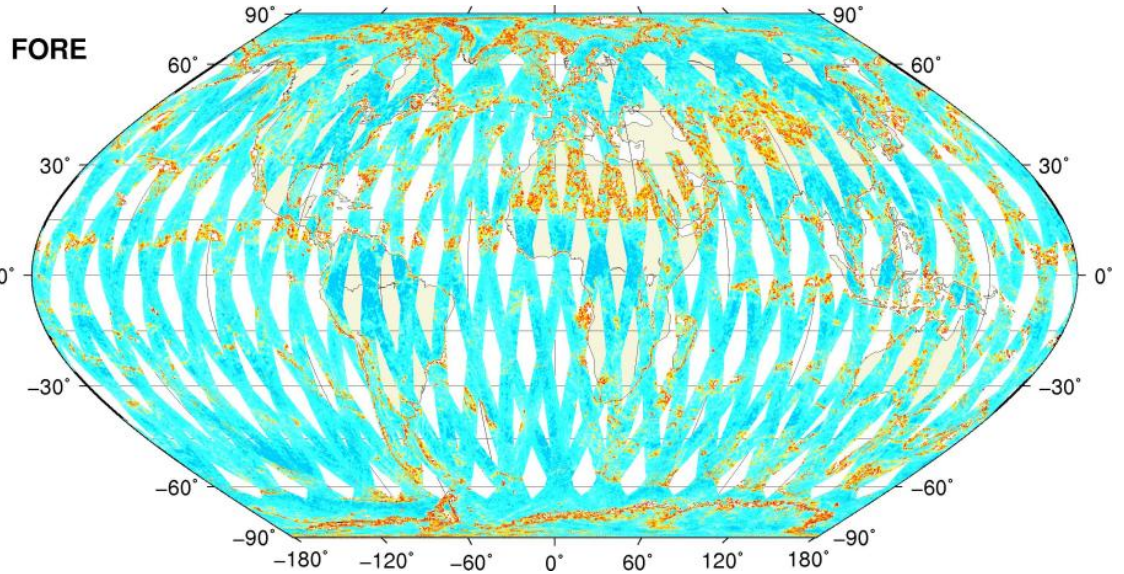




# SZO Product

Kp Coverage map

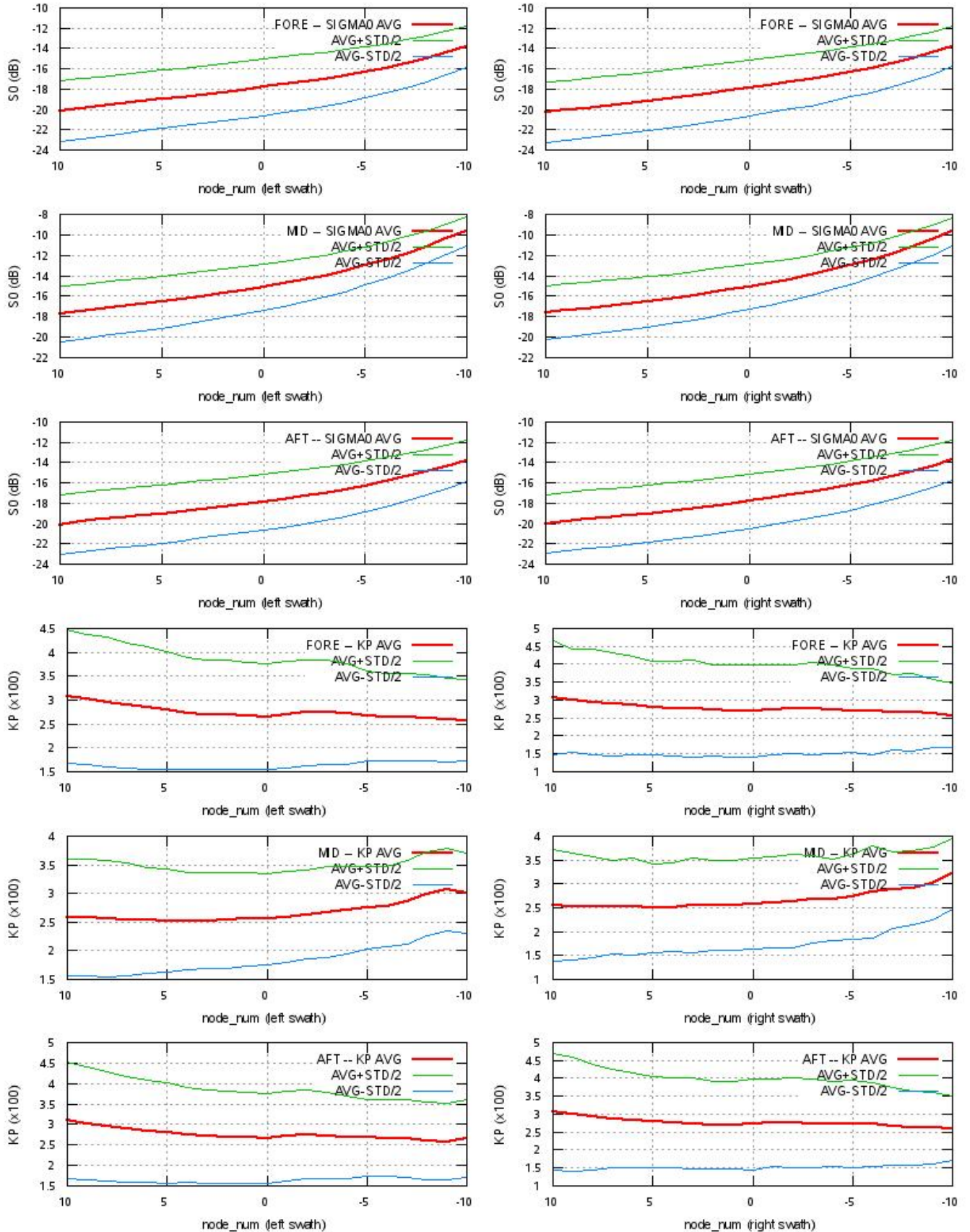
## Kp Coverage





# SZO Product

## S0 - Kp Statistics





# SZO Product

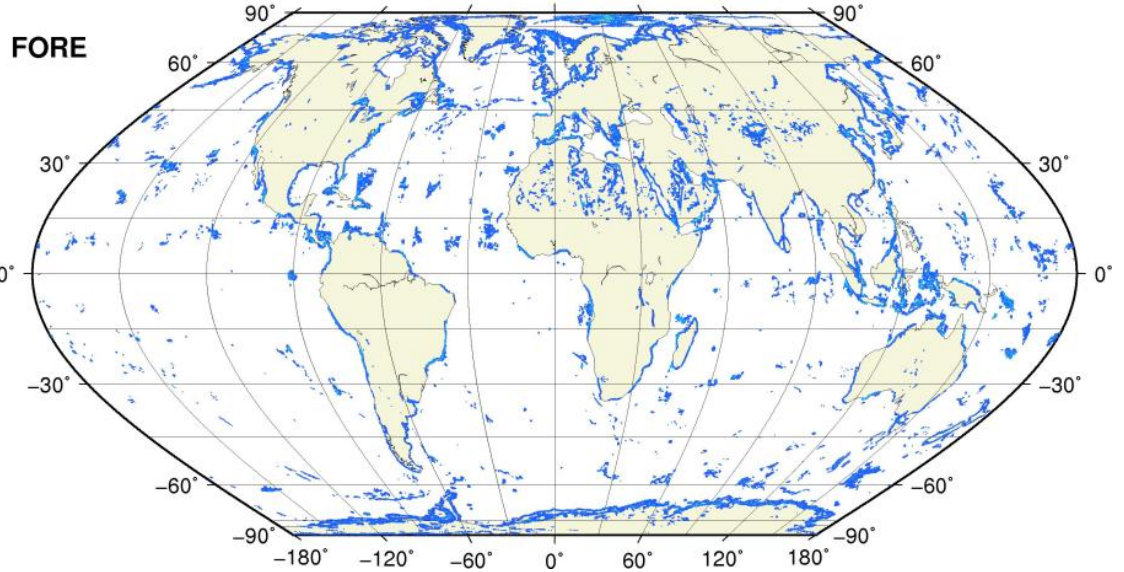
Kp Outliers on map

$0.06 < Kp < 1.0$

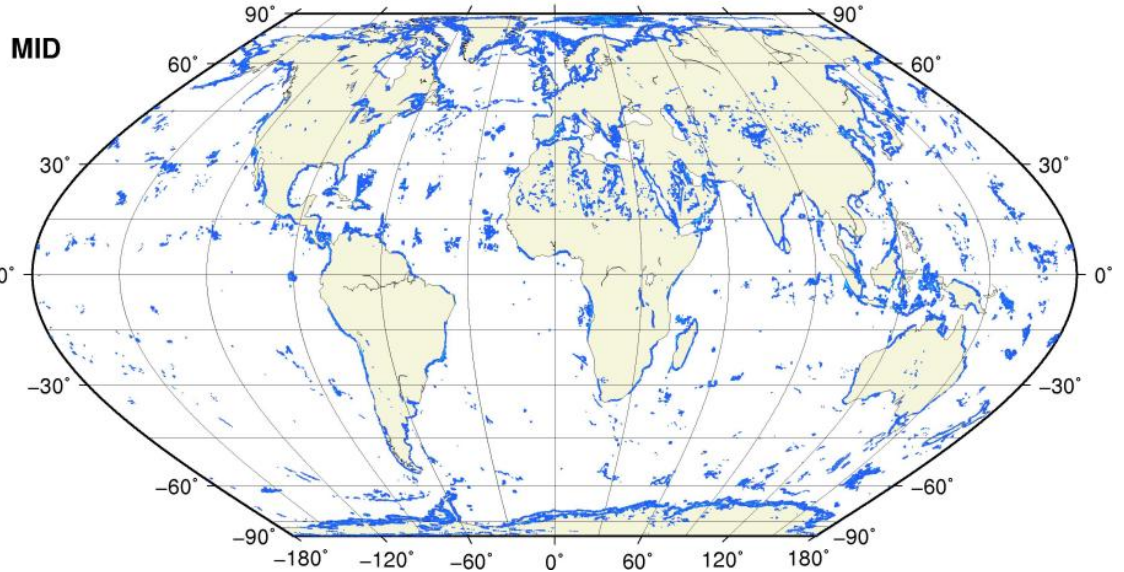
0.1 0.2 0.3 0.4 0.5 0.6 0.7 0.8 0.9 1.0



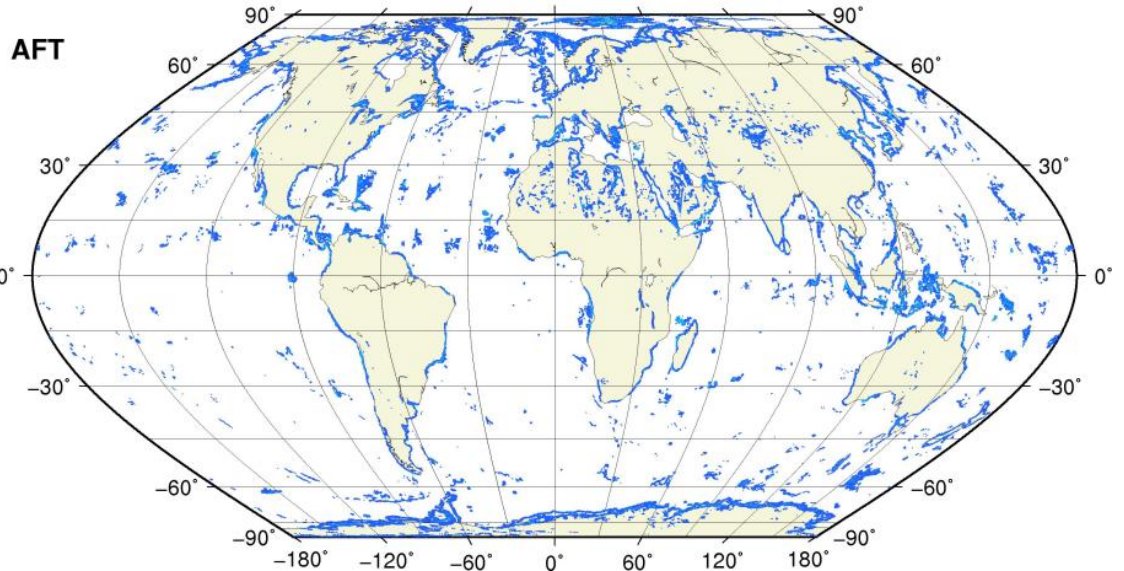
● KP = 1.0 #rec=0



● KP = 1.0 #rec=0



● KP = 1.0 #rec=0

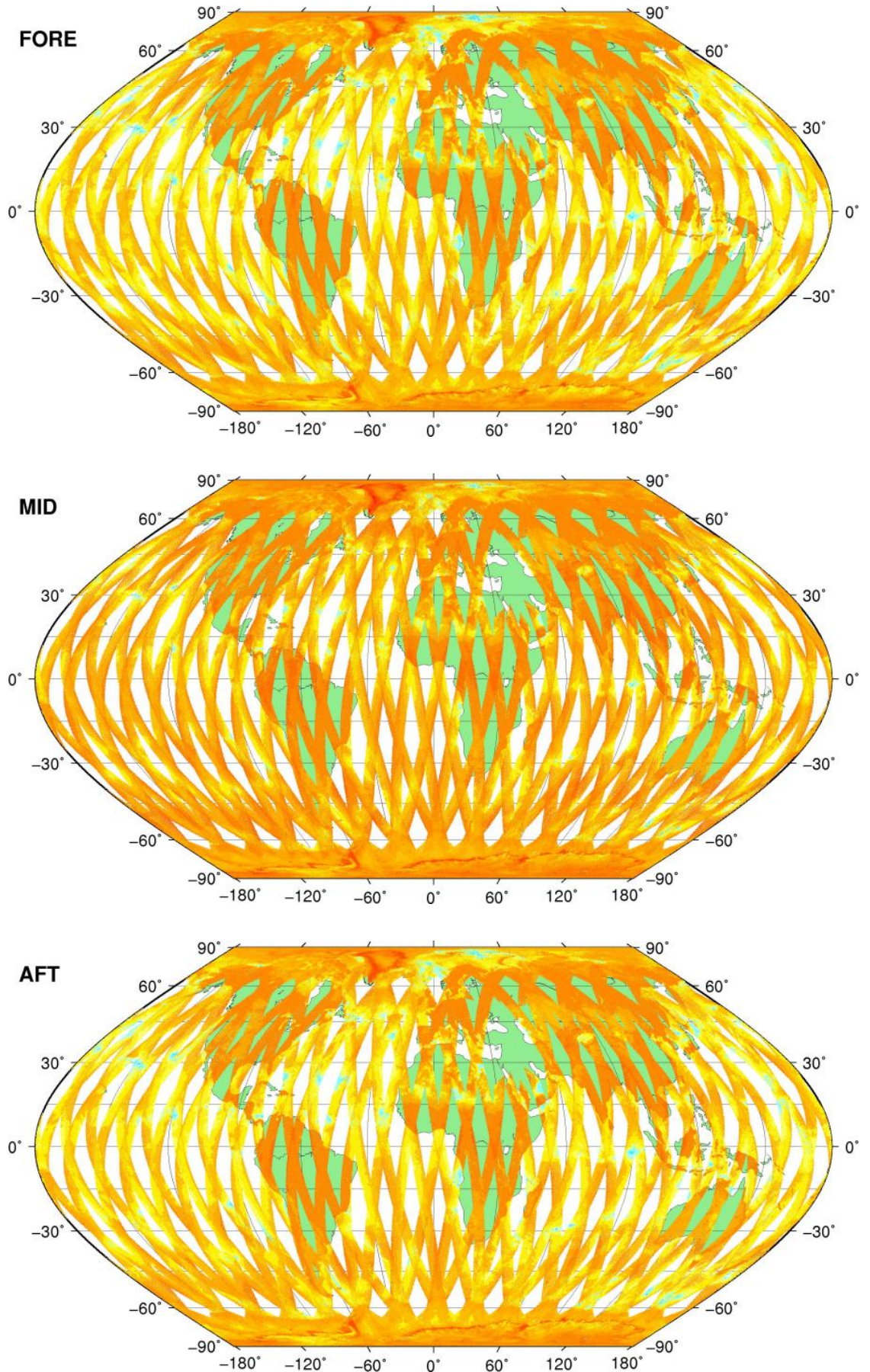




# SZR Product

Sigma0\_TRIP Coverage map

## SIGMA0\_TRIP Coverage

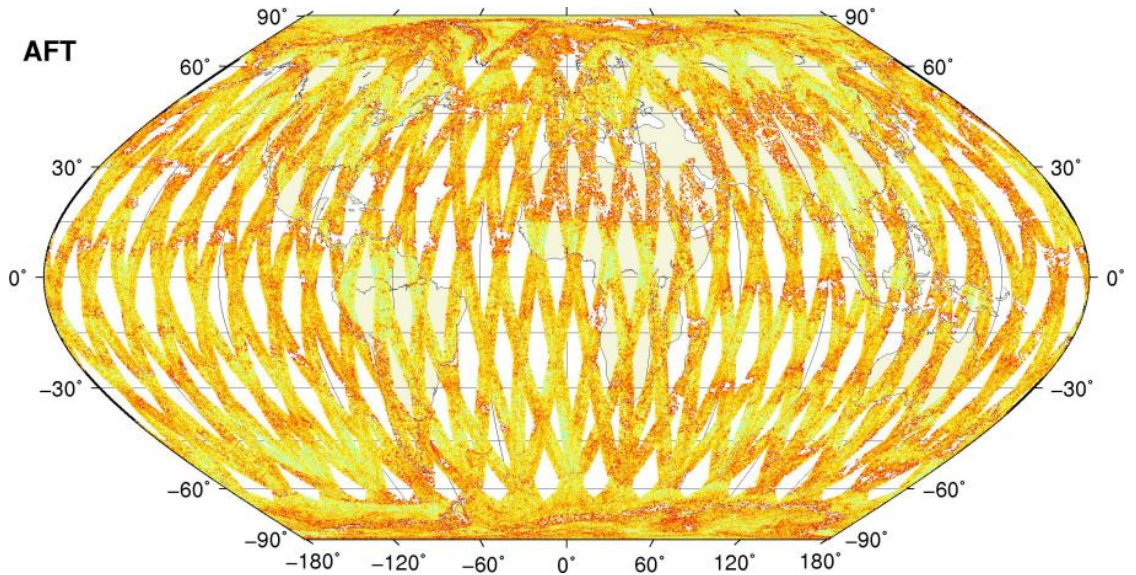
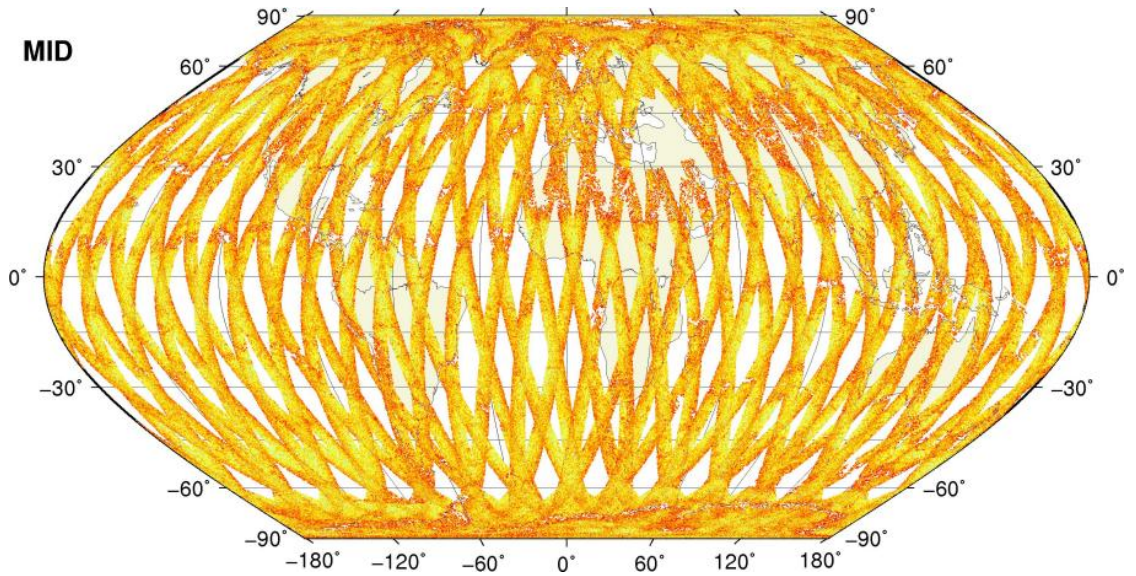
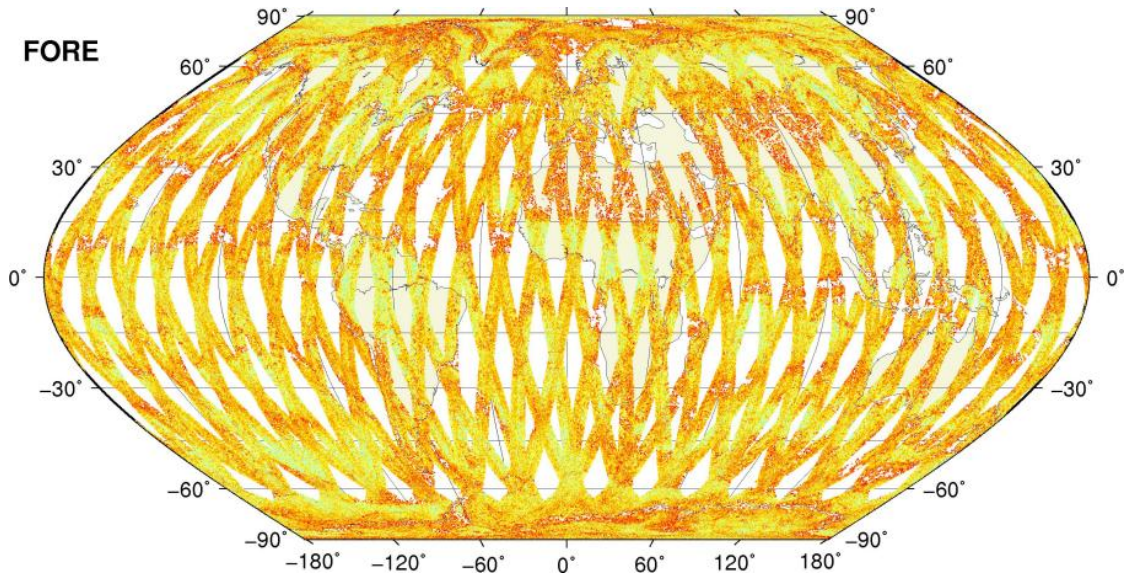
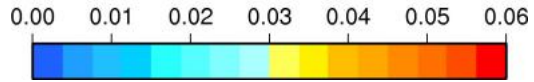




# SZR Product

Kp Coverage map

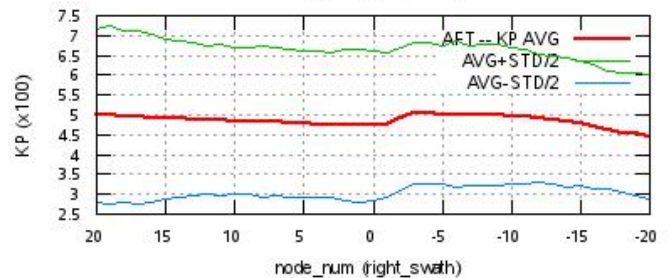
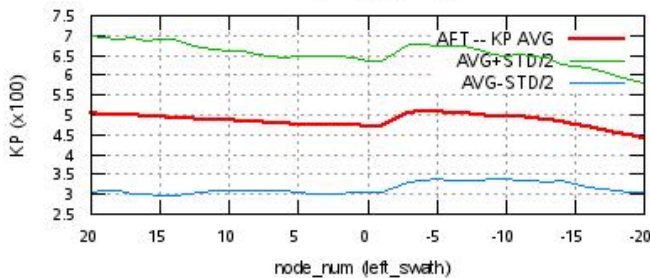
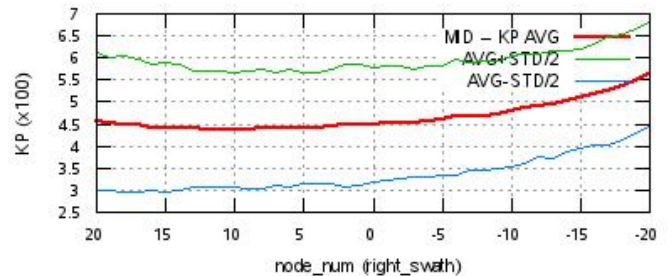
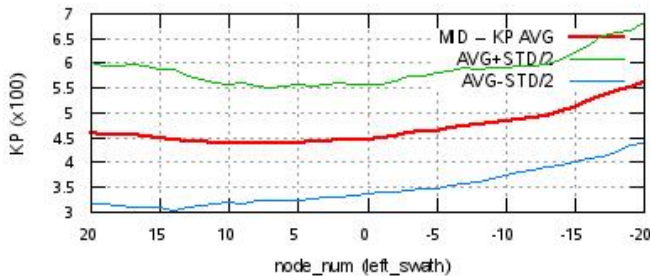
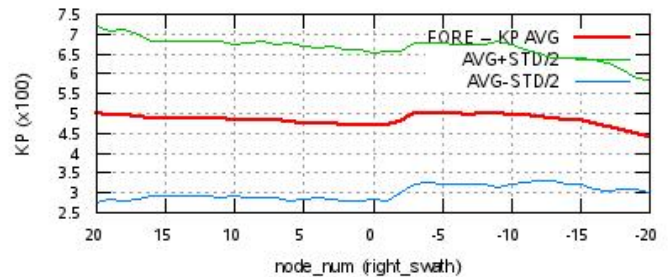
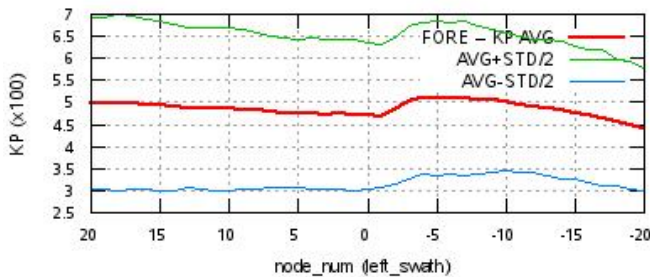
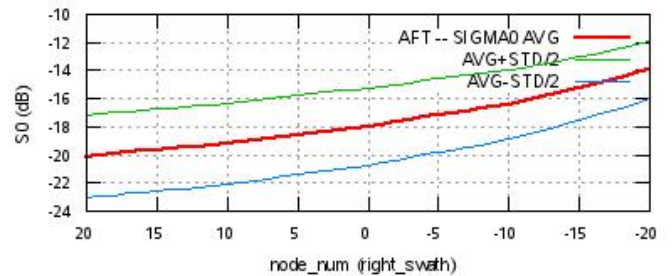
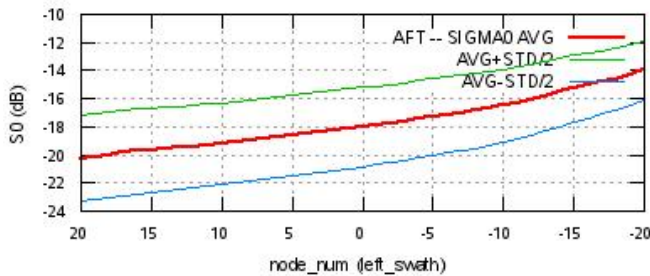
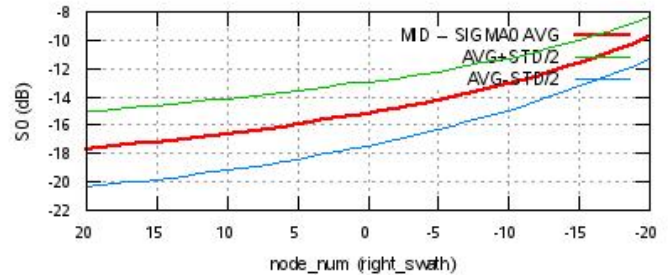
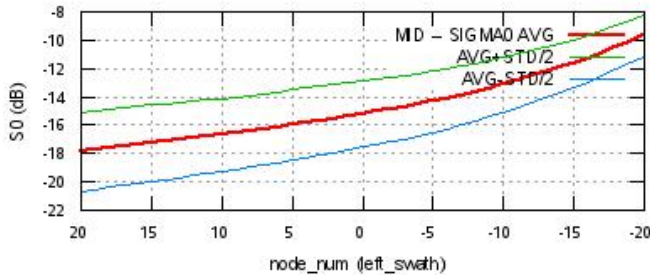
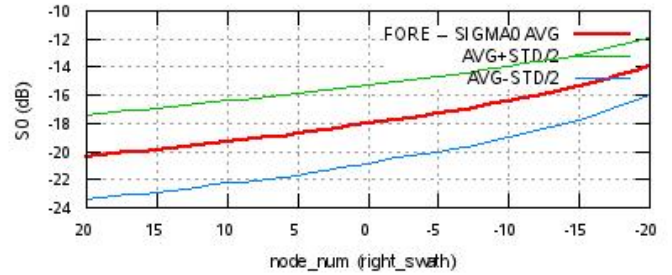
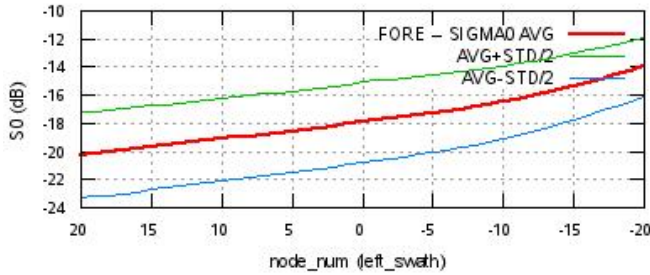
## Kp Coverage





# SZR Product

## S0 - Kp Statistics





# SZR Product

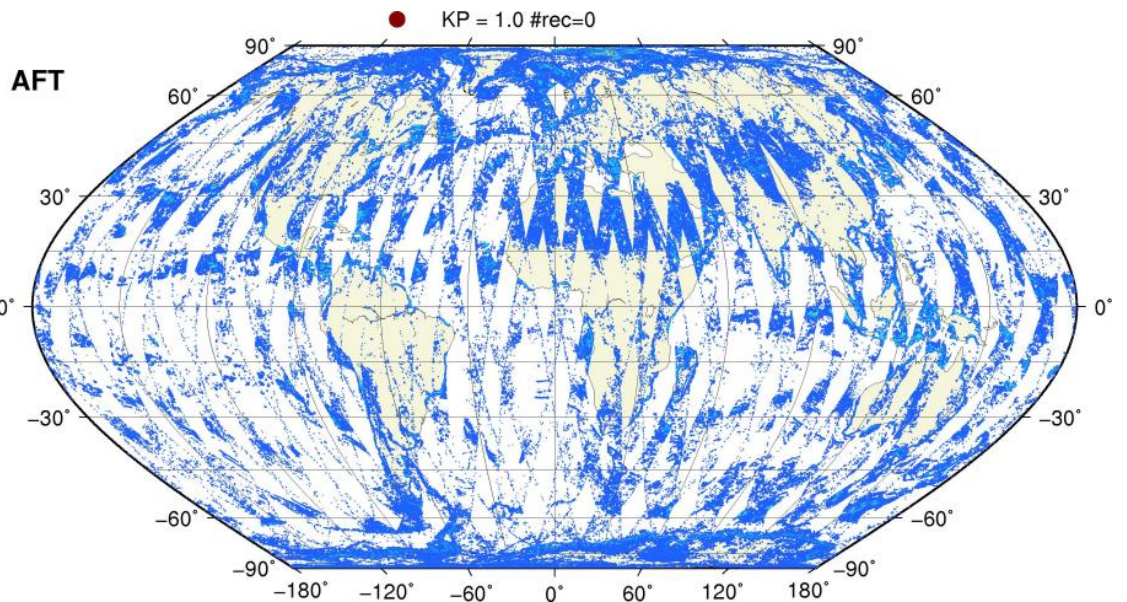
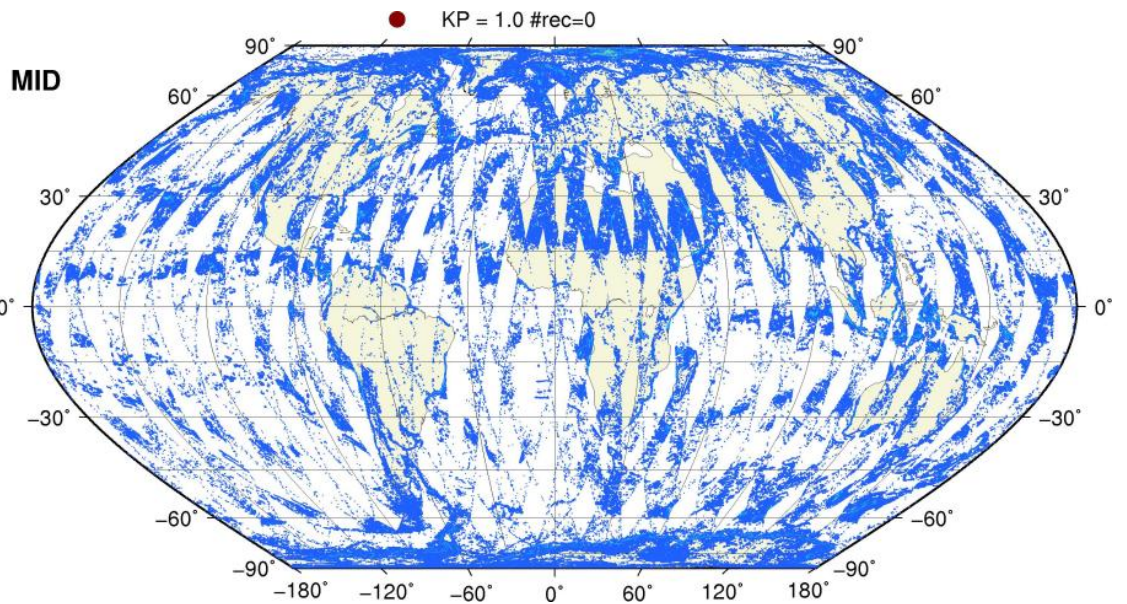
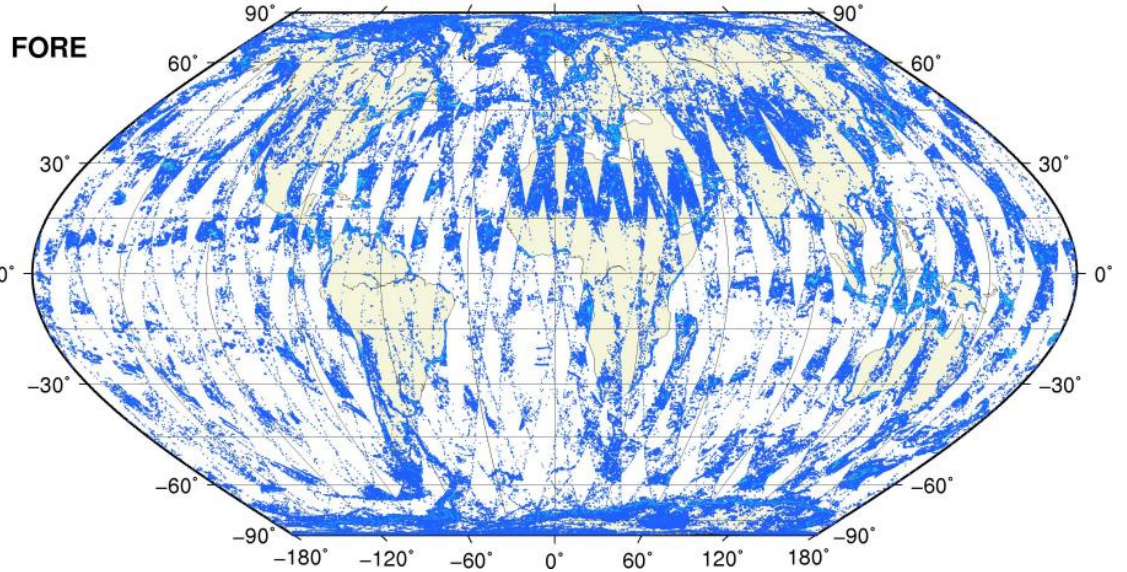
Kp Outliers on map

$0.06 < Kp < 1.0$

0.1 0.2 0.3 0.4 0.5 0.6 0.7 0.8 0.9 1.0



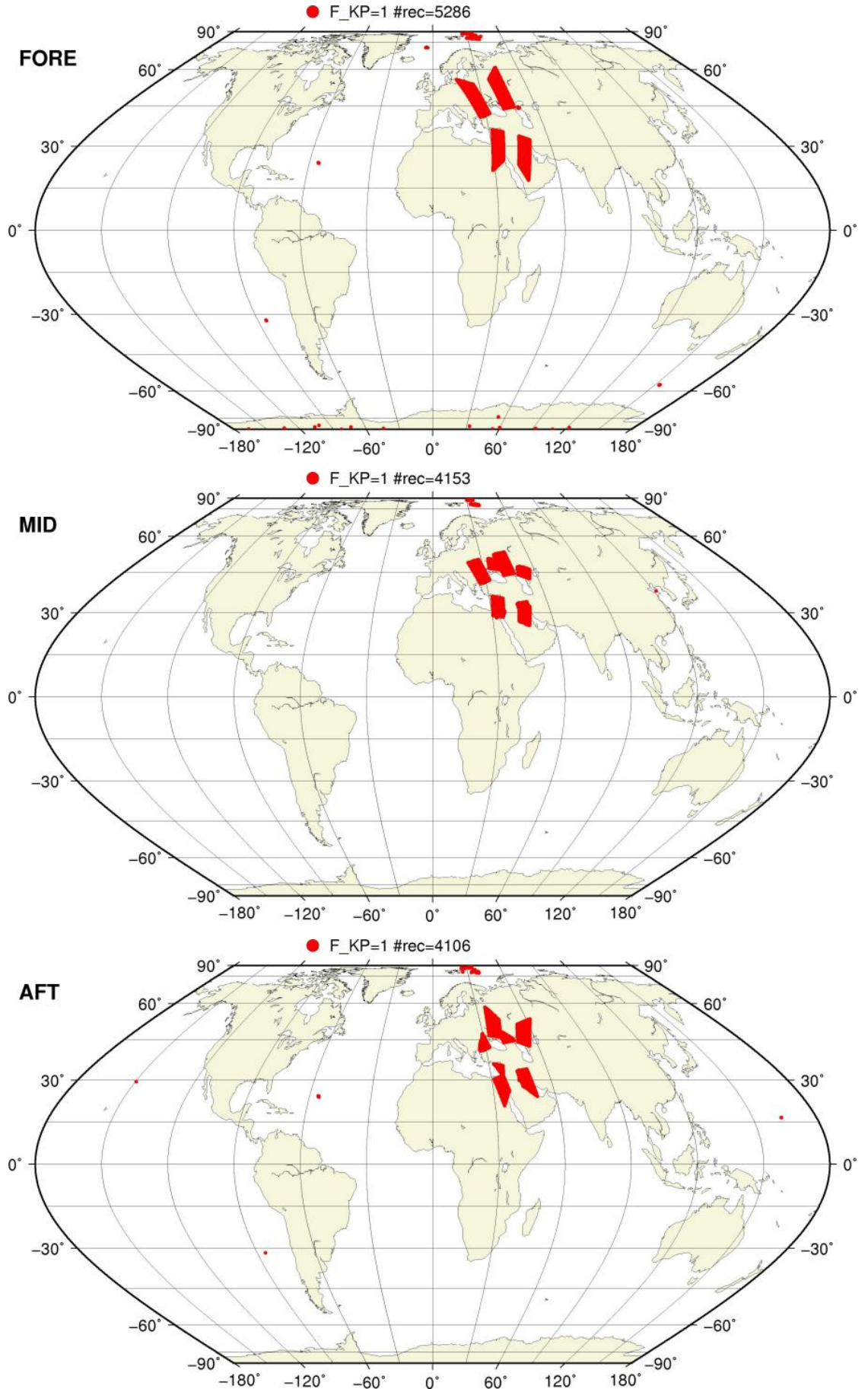
● KP = 1.0 #rec=0





# SZO Flagged Data Coverage

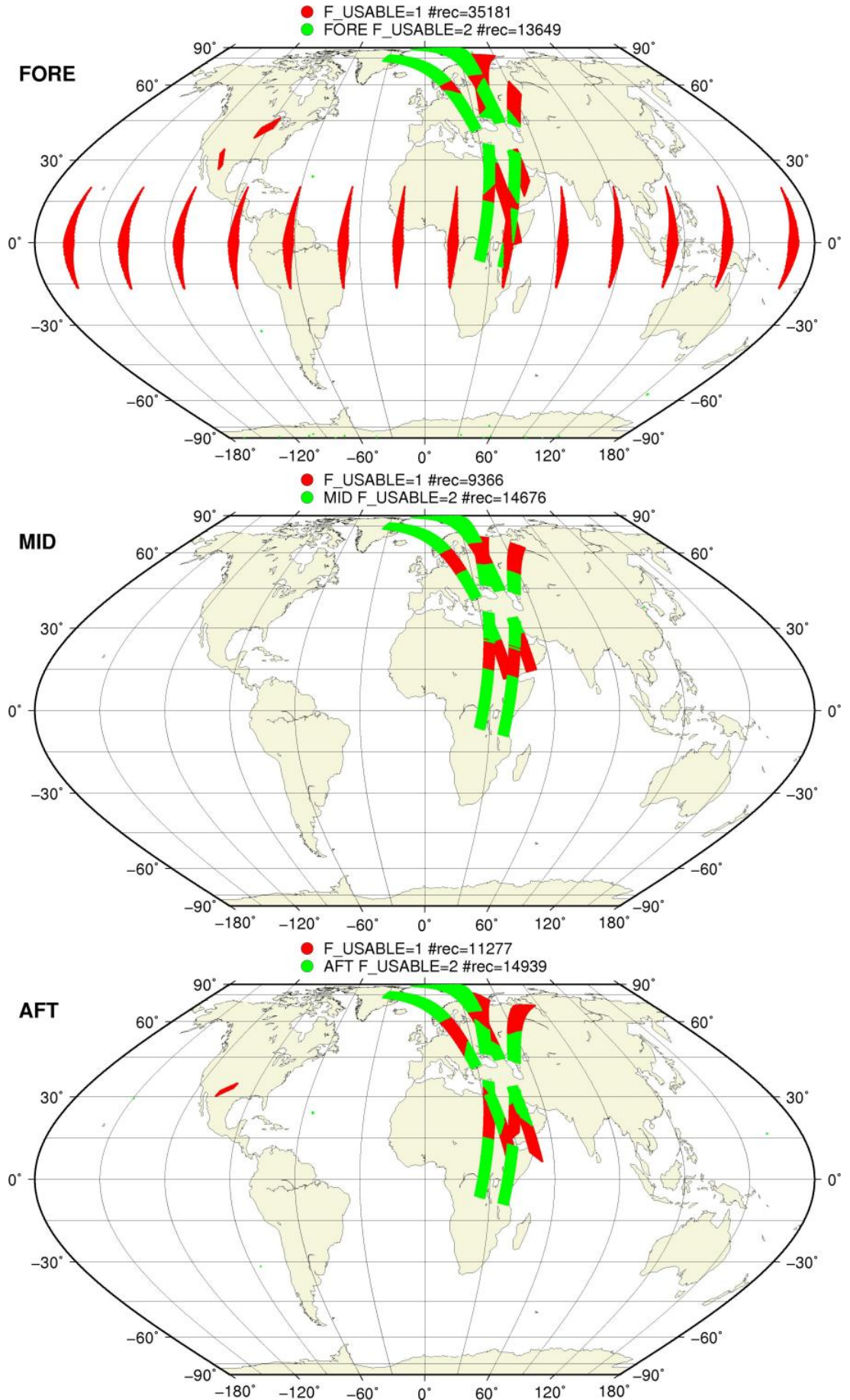
F\_KP = 1 on map





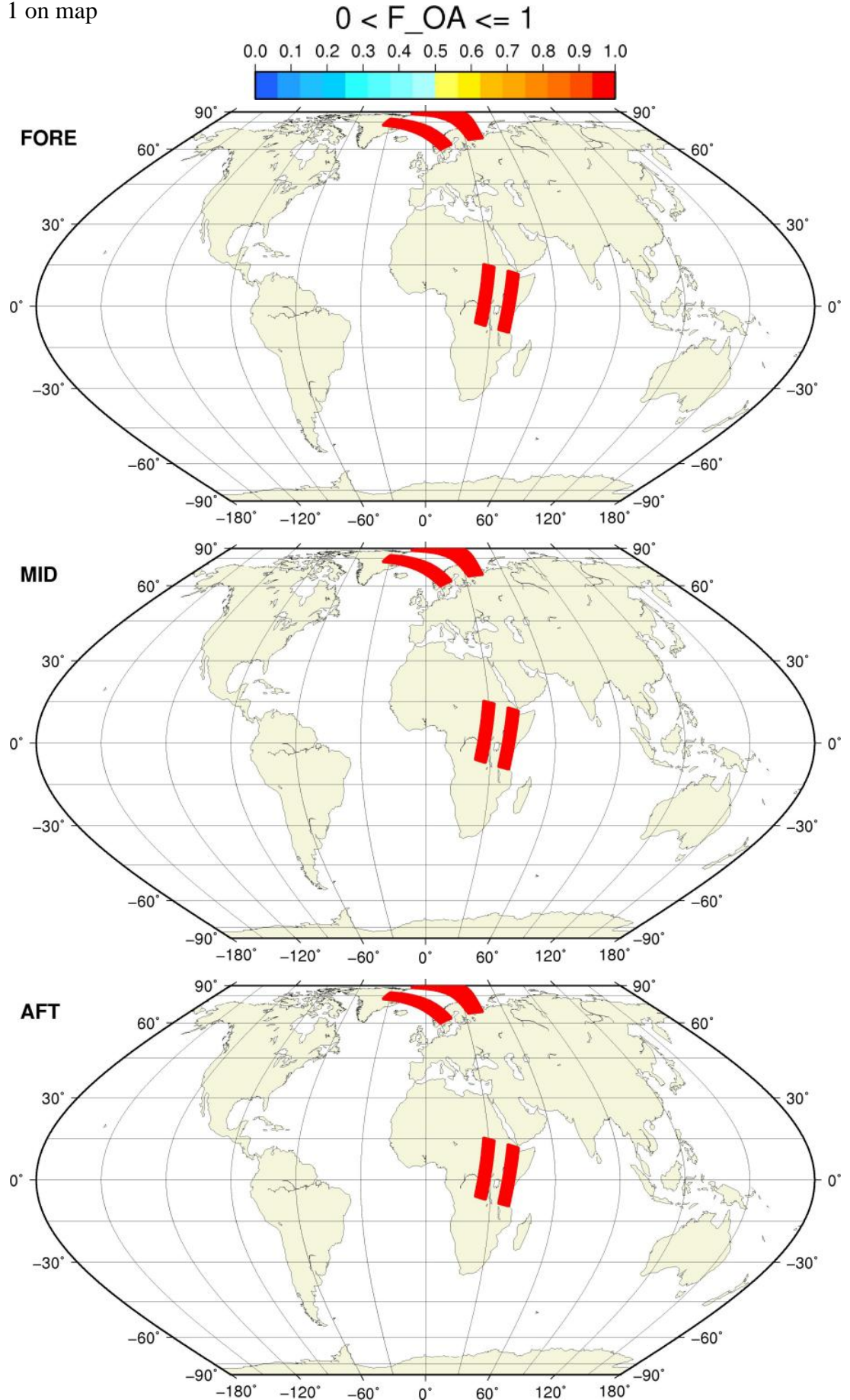
# SZO Flagged Data Coverage

F\_USABLE = 1 or 2 on map



# SZO Flagged Data Coverage

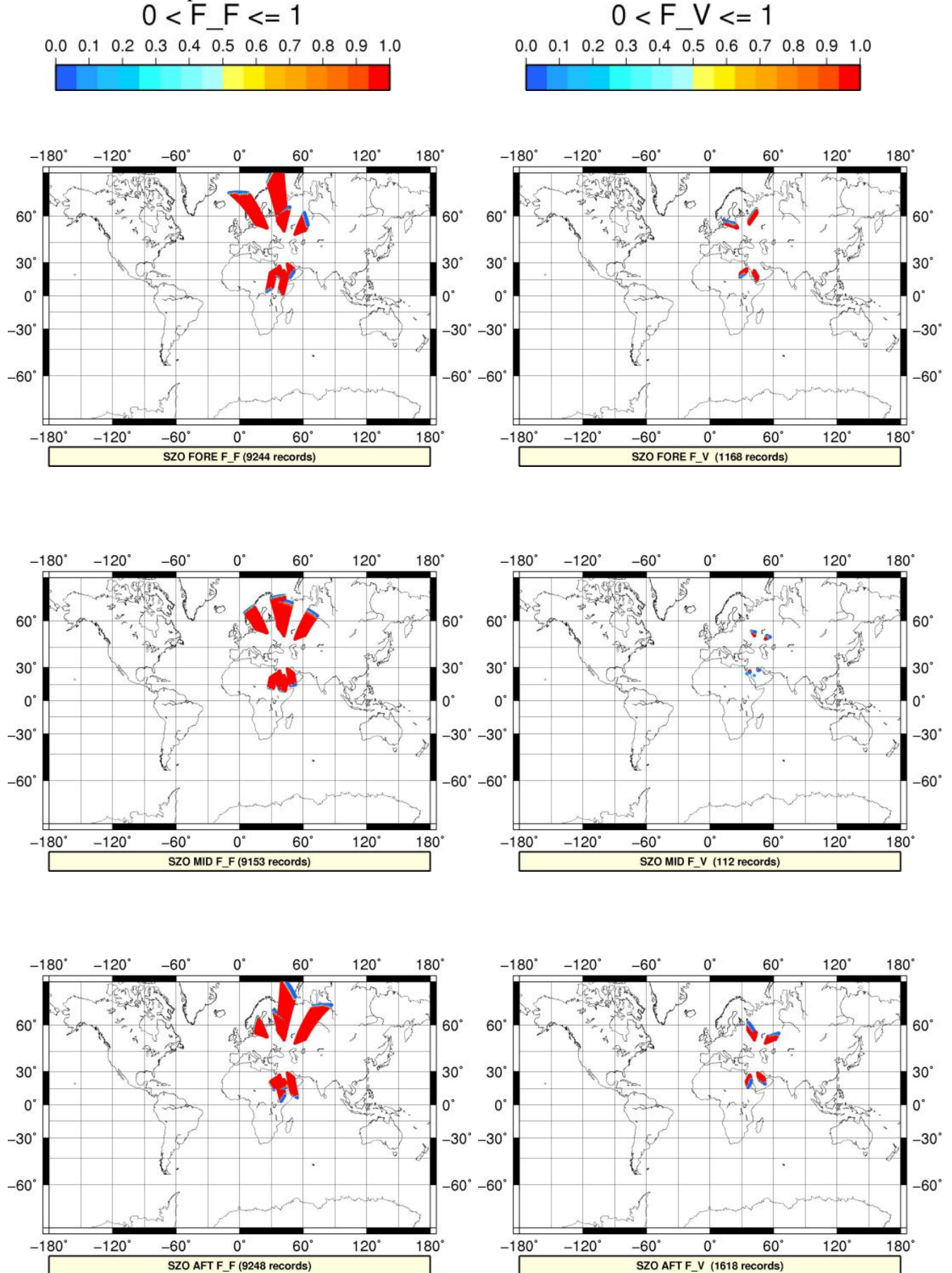
$0 < F_{OA} \leq 1$  on map





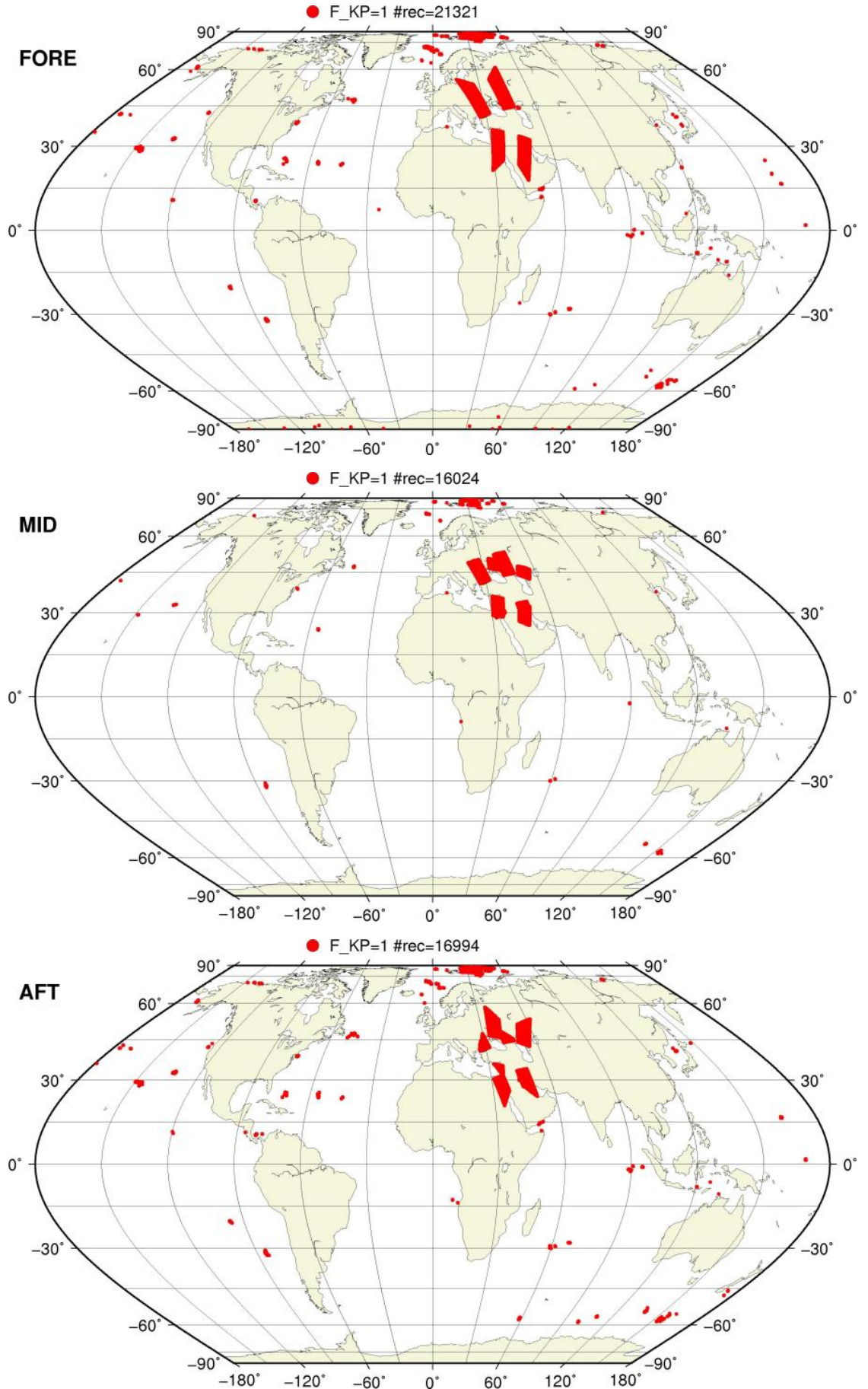
# SZO Flagged Data Coverage

$0 < F_{F/V} \leq 1$  on map



# SZR Flagged Data Coverage

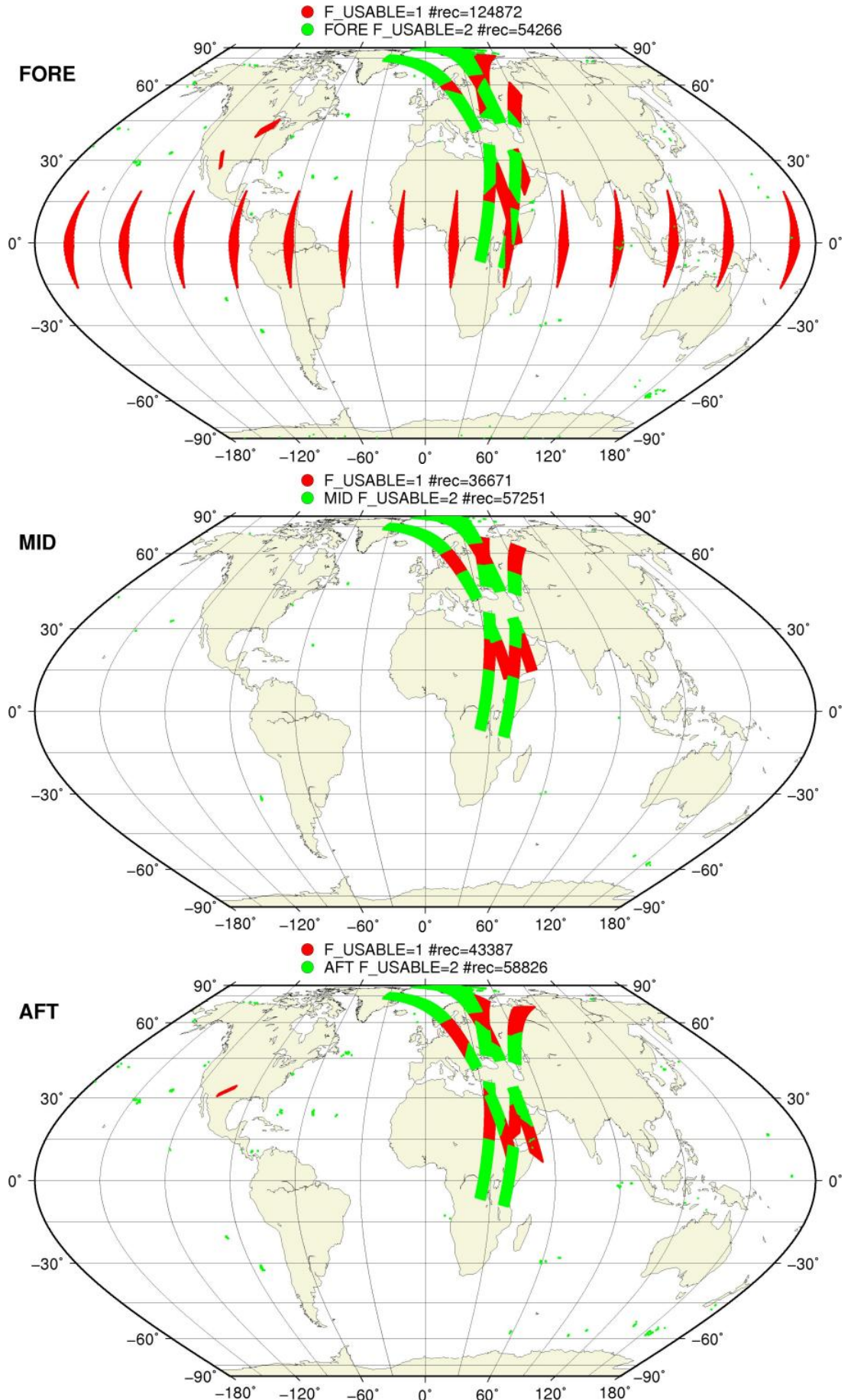
F\_KP = 1 on map





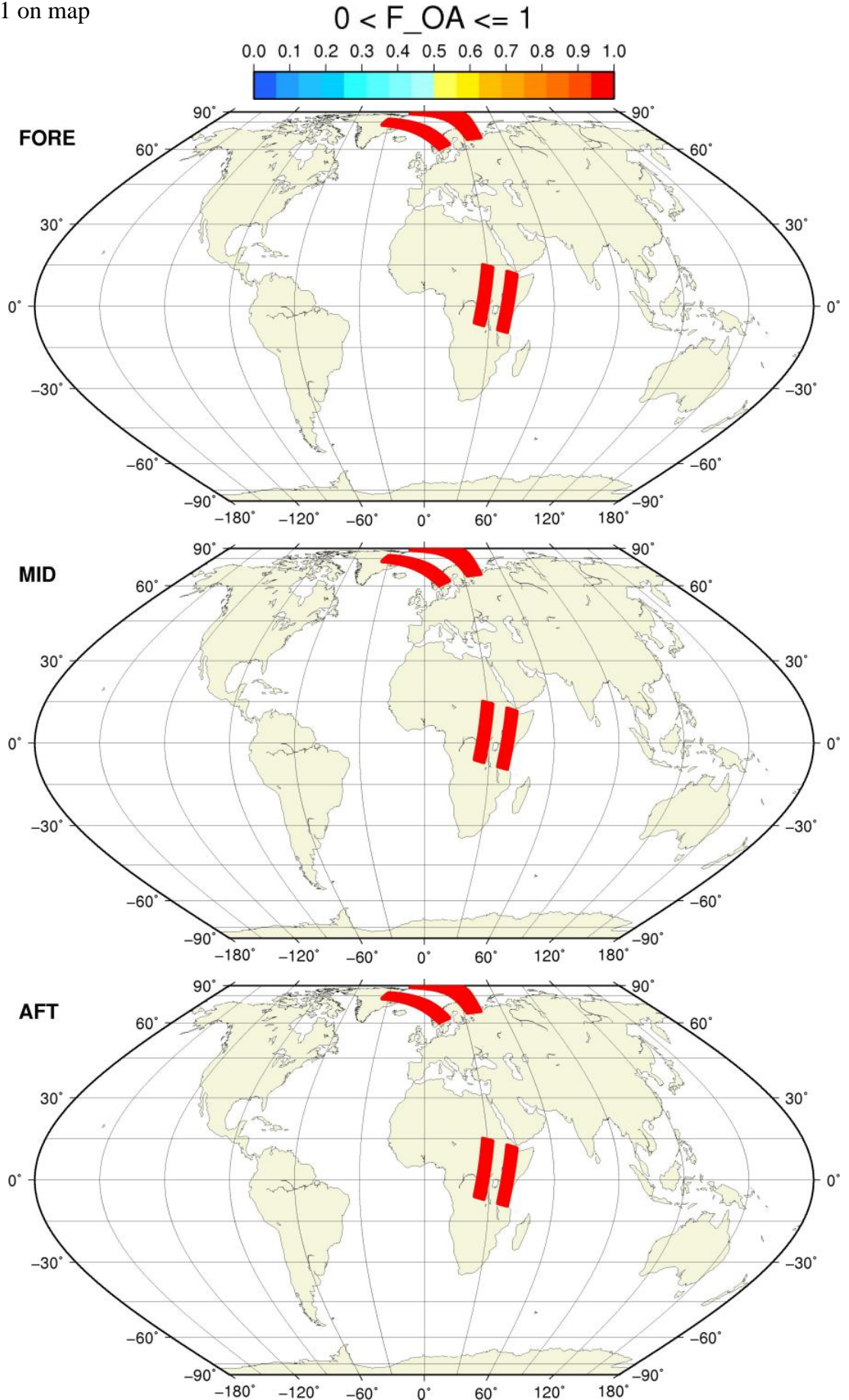
# SZR Flagged Data Coverage

F\_USABLE = 1 or 2 on map



# SZR Flagged Data Coverage

$0 < F_{OA} \leq 1$  on map





# SZR Flagged Data Coverage

$0 < F_{F/V} \leq 1$  on map

