

# ASCAT DAILY Report

**Metop-B**

**OPE**

**DAY 2017\_294**

**20171021000000 - 20171021235959**

## DATA STATISTICS

BASED ON ORBITS (#14)

26415 26416 26417 26418 26419 26420 26421 26422 26423 26424 26425 26426 26427  
26428 26429

DB STATISTICS : OPE M01\_20171021

SMO	480	1.29	.34	.63	2.77
SMR	480	3.37	.77	2.16	8.70
SZF	479	.39	1.73	.13	22.53
xxx	480	9.11	2.23	6.76	29.84

INGATE (STORE) STATISTICS : OPE M01\_20171021

xxx_1A	/fbf/tcdras/store/gsl/ASCA_xxx_1A_M01	-- number of files (xxx_1A) : 480
SZO_1B	/fbf/tcdras/store/gsl/ASCA_SZO_1B_M01	-- number of files (SZO_1B) : 480
SZR_1B	/fbf/tcdras/store/gsl/ASCA_SZR_1B_M01	-- number of files (SZR_1B) : 480
SZF_1B	/fbf/tcdras/store/gsl/ASCA_SZF_1B_M01	-- number of files (SZF_1B) : 480
SMO_02	/fbf/tcdras/store/gsl/ASCA_SMO_02_M01	-- number of files (SMO_02) : 480
SMR_02	/fbf/tcdras/store/gsl/ASCA_SMR_02_M01	-- number of files (SMR_02) : 480

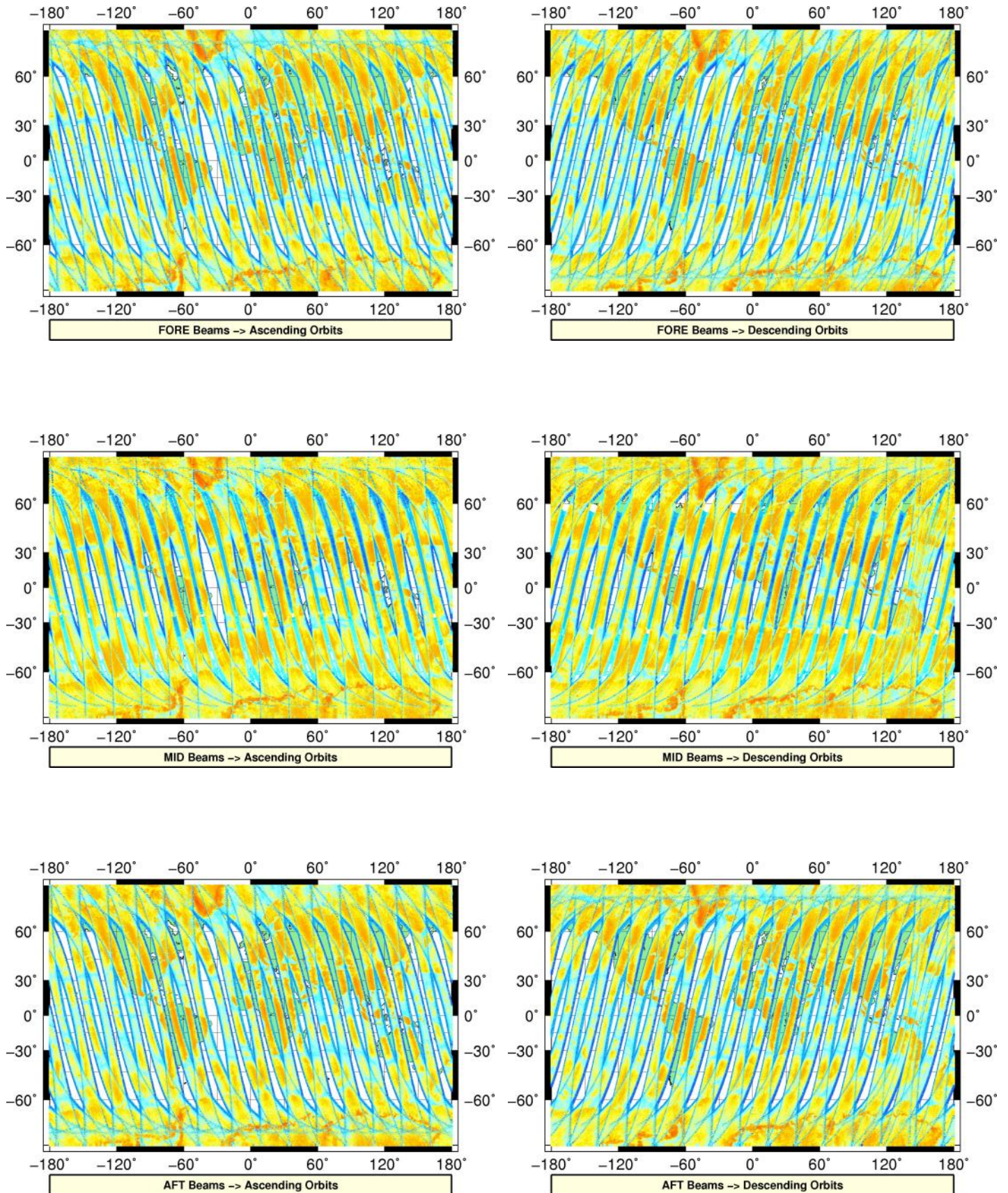
# Overview

## Configuration and SPHR content

Parameter	Value
SENSING START-STOP	20171021000000 - 20171021235959
ORBIT START-STOP	-
SATELLITE	M01
SW - DPU Version	3.9 (57)
SW - ICU Version	2.03 (35)
PARAM - Drive Level ID	0 (Nominal drive level as defined in the active DPU Data Set)
PARAM - DPU Data Set ID	2
PARAM - Revision ID	14
INST - Table Set ID	0 (no calibration, nominal table set used)
INST - Redundancy Config	127
	nominal ICU
	nominal DPU
	nominal RFU
	nominal HPA
	nominal SFE
	nominal SFE LNA
	nominal signal path (from HPA_B)
N_L1A_MDR	610403
N_L1A_MDR_B0	101734
N_L1A_MDR_B1	101734
N_L1A_MDR_B2	101734
N_L1A_MDR_B3	101734
N_L1A_MDR_B4	101734
N_L1A_MDR_B5	101733
N_GAPS	0
TOTAL_GAPS_SIZE	0
N_HKTM_PACKETS_RECEIVED	16119
N_F_NOISE	0
N_F_PG	0
N_V_PG	0
N_F_FILTER	0
N_V_FILTER	0
N_F_PGP	0
N_F_NP	0
N_F_ORBIT	0
N_F_ATTITUDE	0
N_F_OMEGA	0
N_F_MAN	0
N_F_OSV	0
N_F_E_TEL_PRES	0
N_F_E_TEL_IR	0
N_F_CE	0
N_V_CE	0
N_F_OA	0
N_F_TEL	0
N_F_REF	0
N_F_SA	1062681
N_F_LAND	50094824
N_F_GEO	3322088
N_F_SIGN	0
N_L1B_MDR	0
N_EMPTY_S0_TRIP	0
N_L1B_MDR_F	0
N_EMPTY_S0_TRIP_F	0
N_L1B_MDR_M	0

# L1A Product

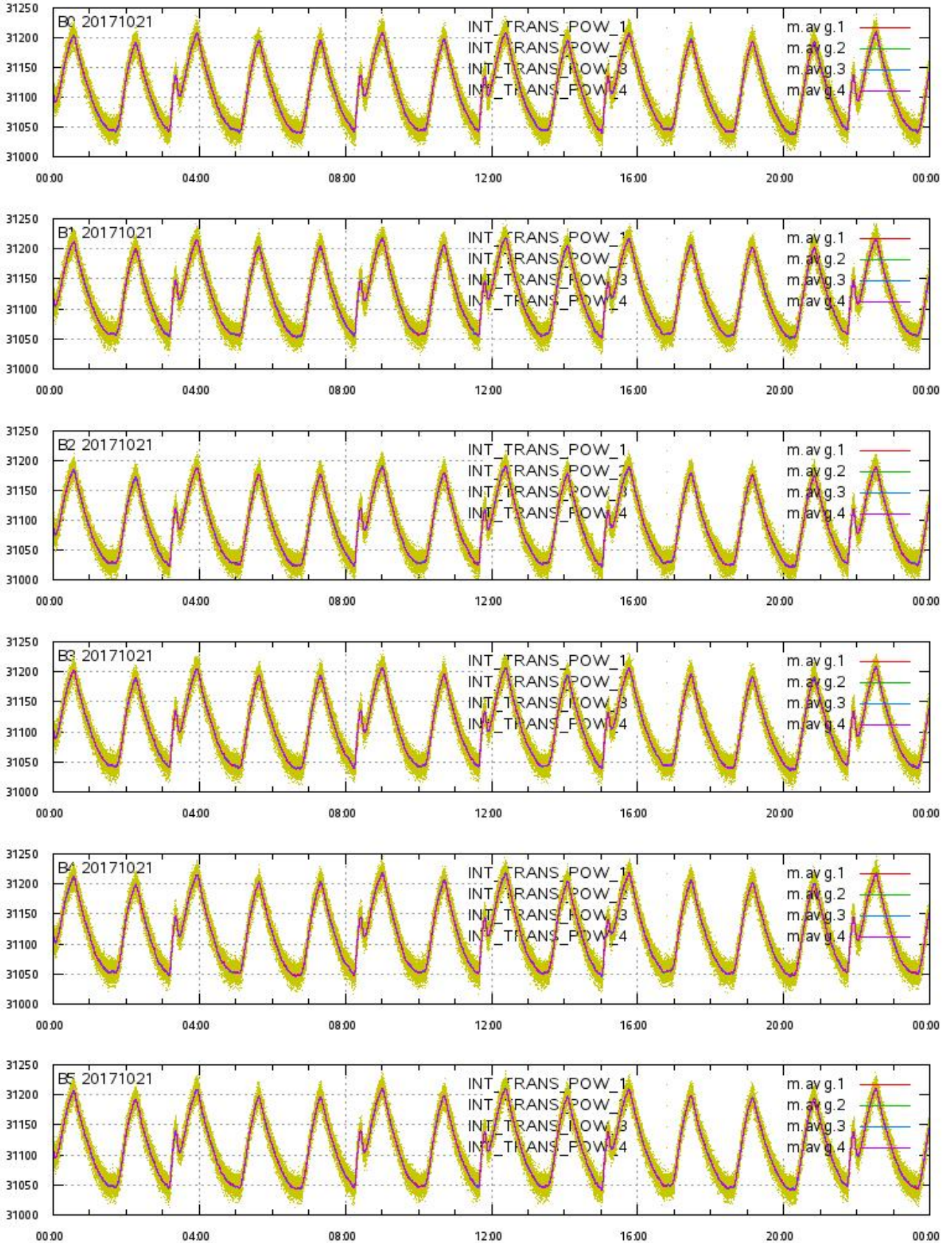
## Echo Data Coverage maps





# L1A Product

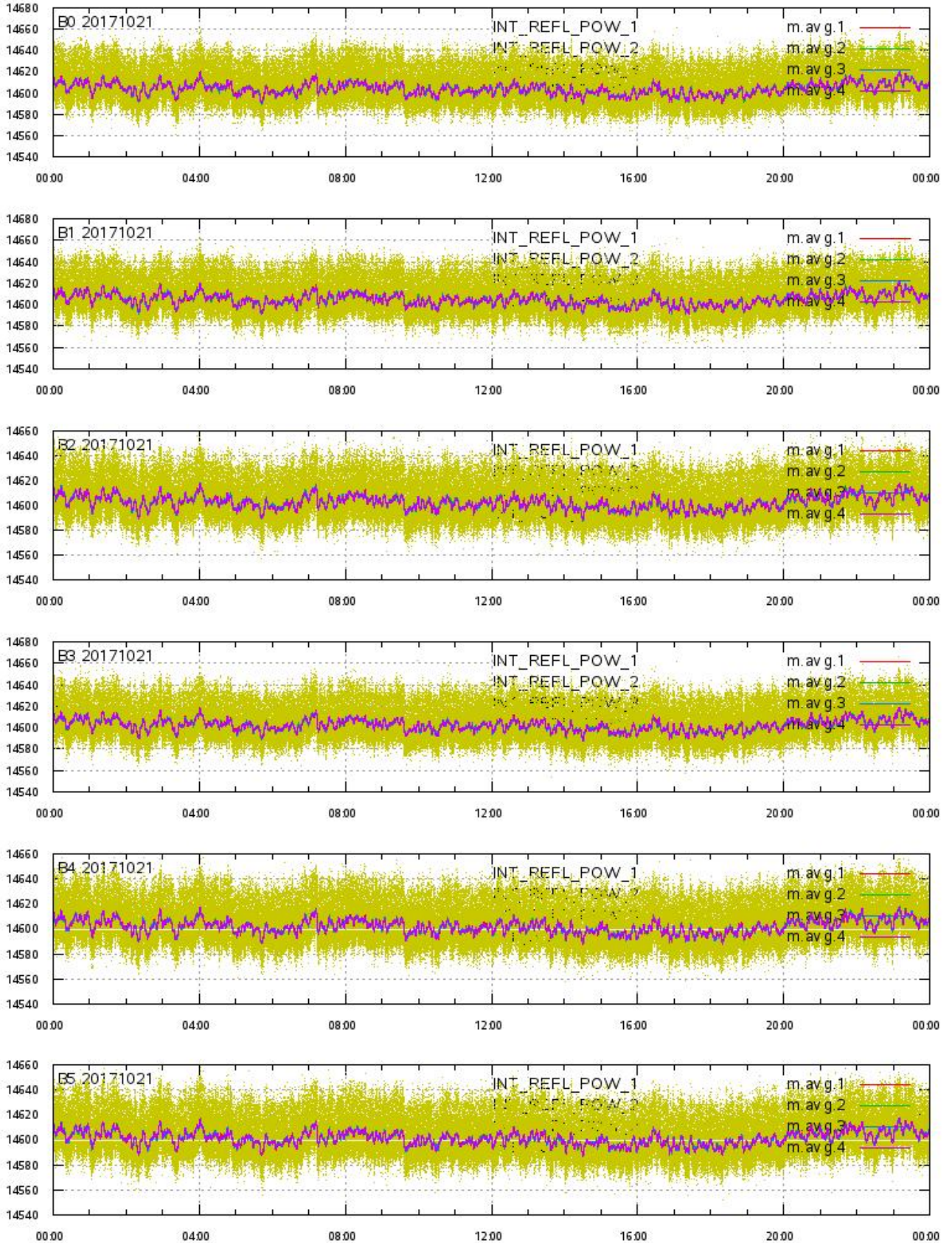
## Integrated Transmitted Powers 1-4 per beam 0-5 vs. UTC\_LOCALISATION





# L1A Product

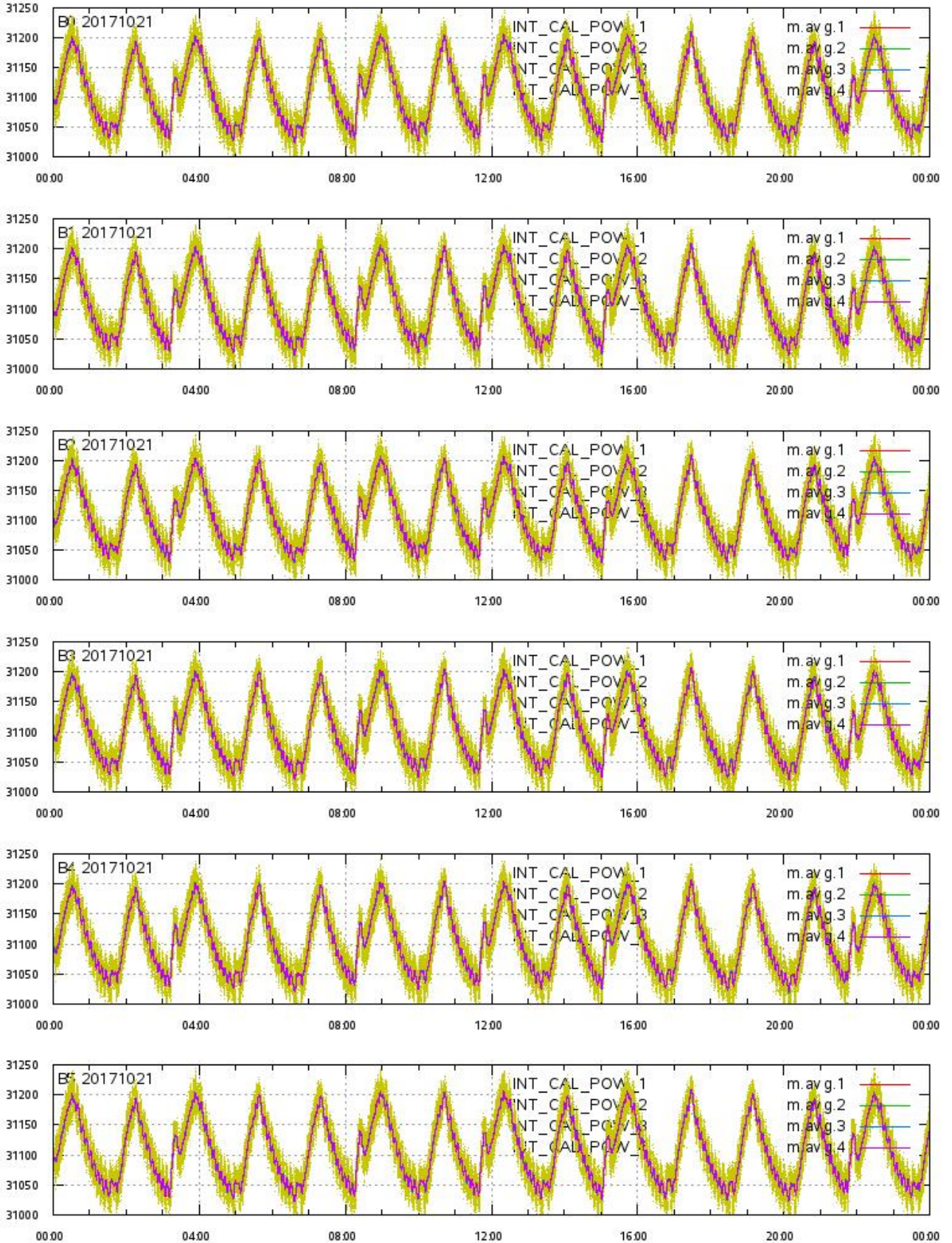
## Integrated Reflected Powers 1-4 per beam 0-5 vs. UTC\_LOCALISATION





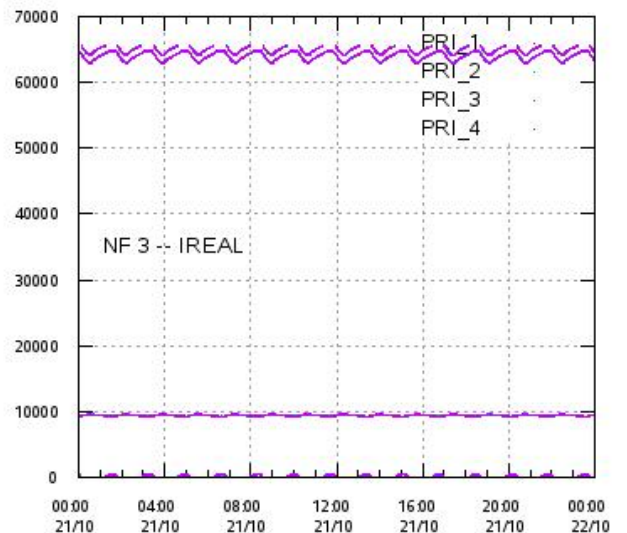
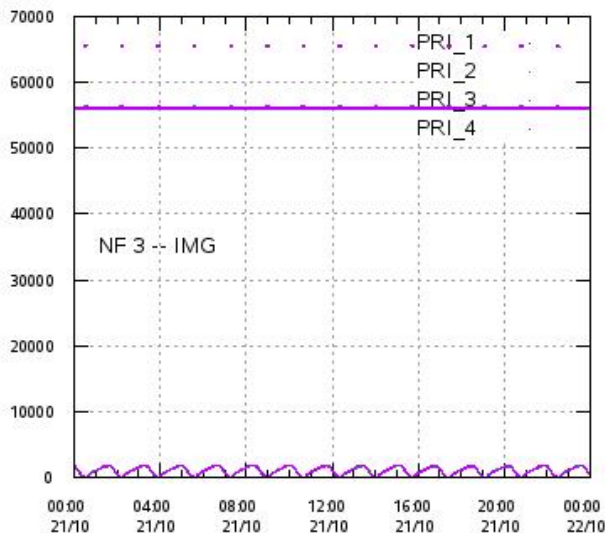
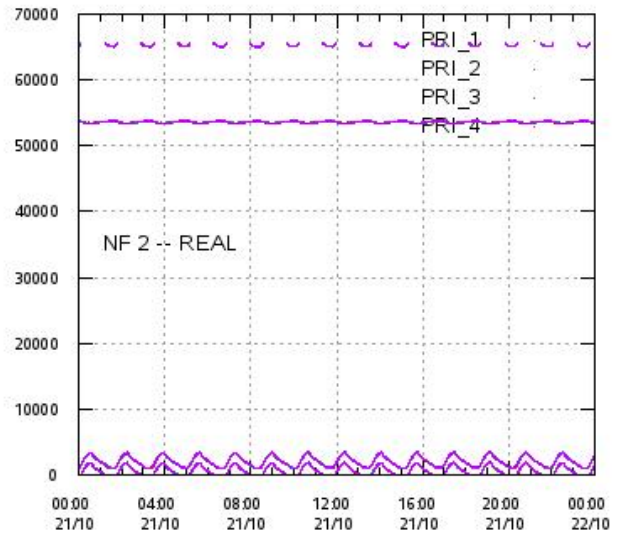
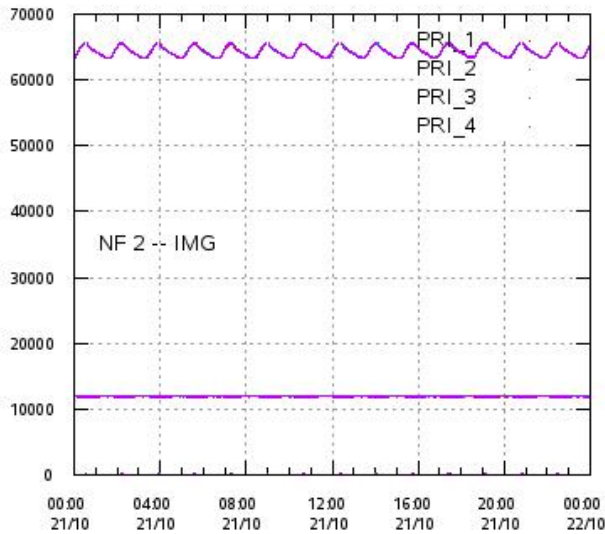
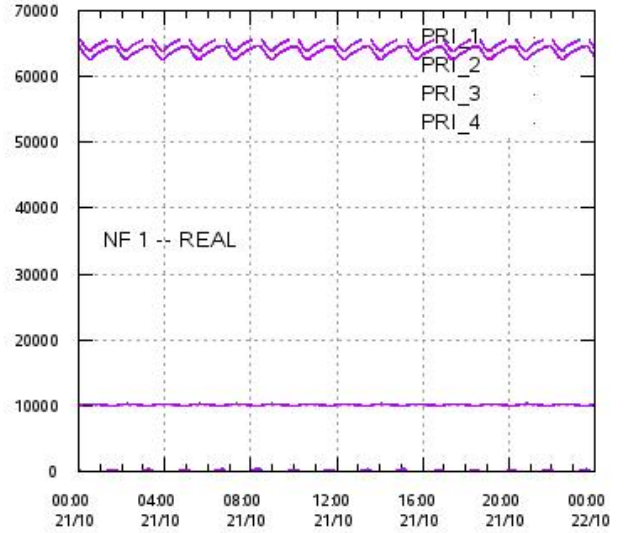
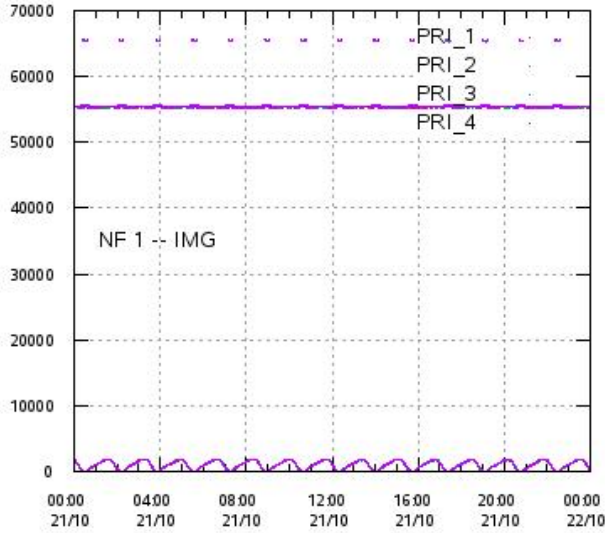
# L1A Product

## Integrated Calibration Powers 1-4 per beam 0-5 vs. UTC\_LOCALISATION



# L1A Product

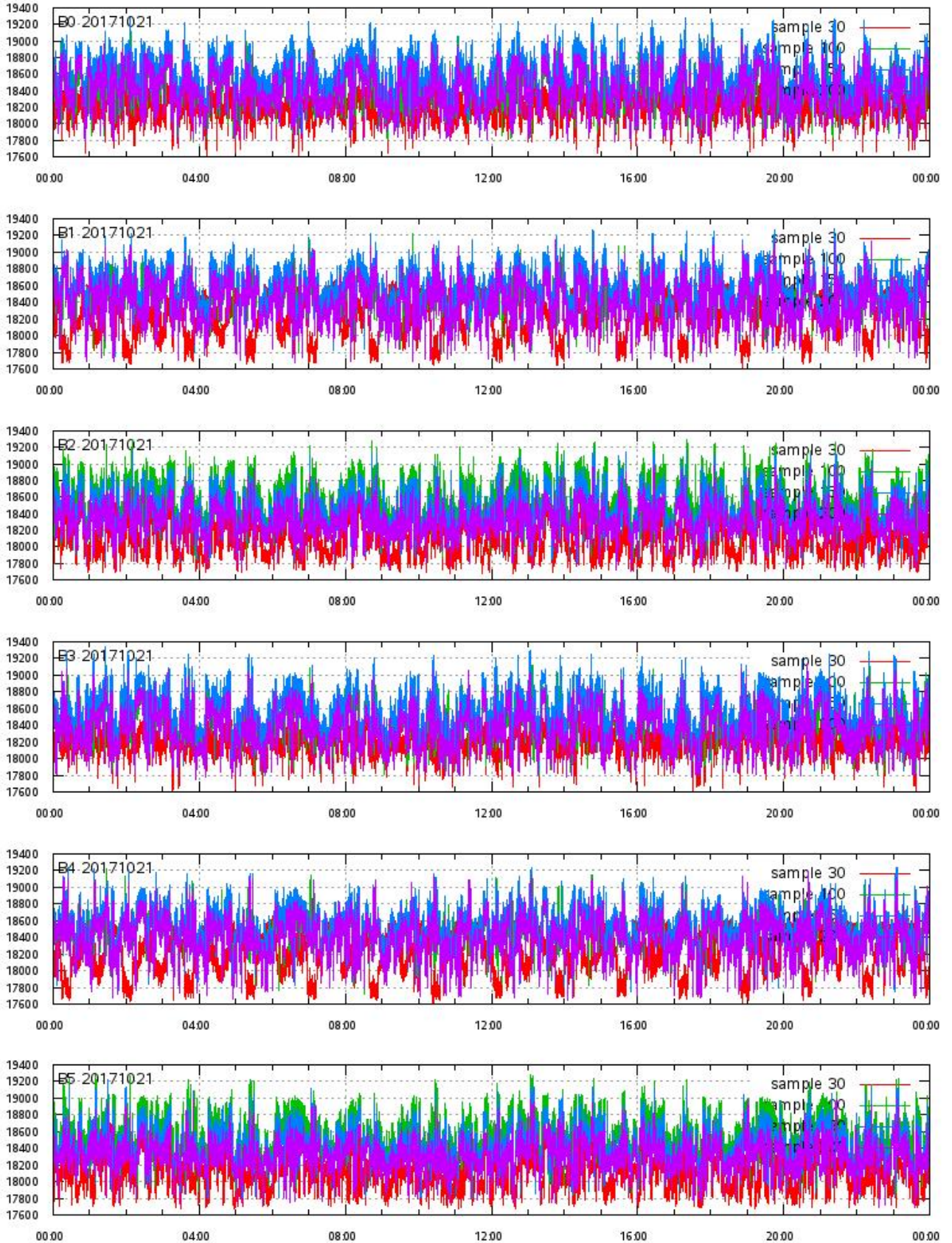
## Calibration Powers vs. UTC\_LOCALISATION





# L1A Product

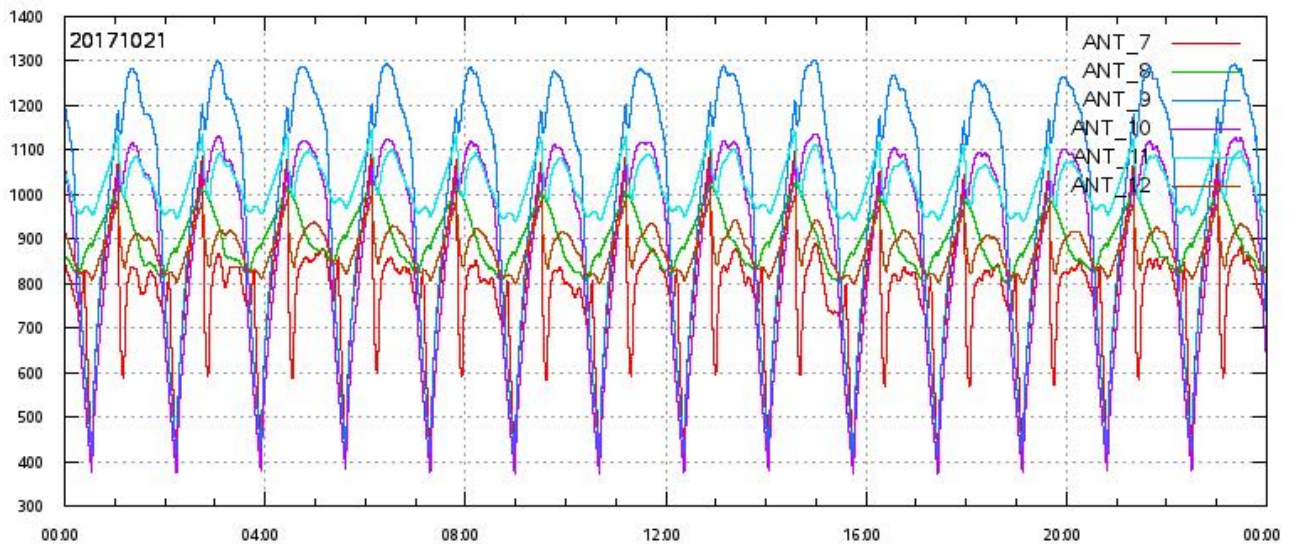
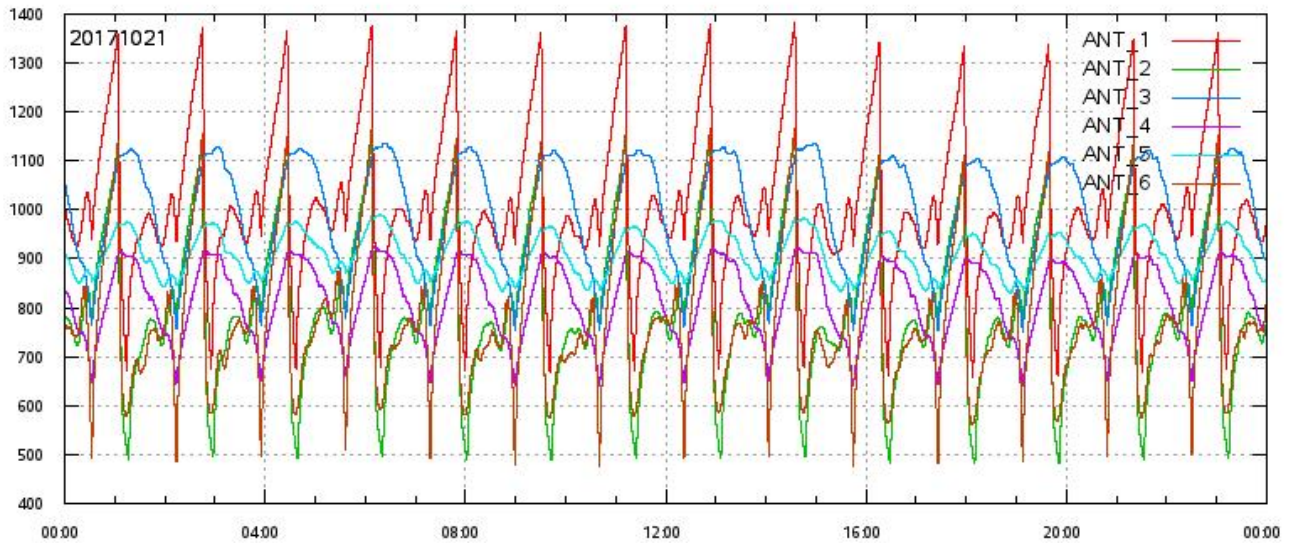
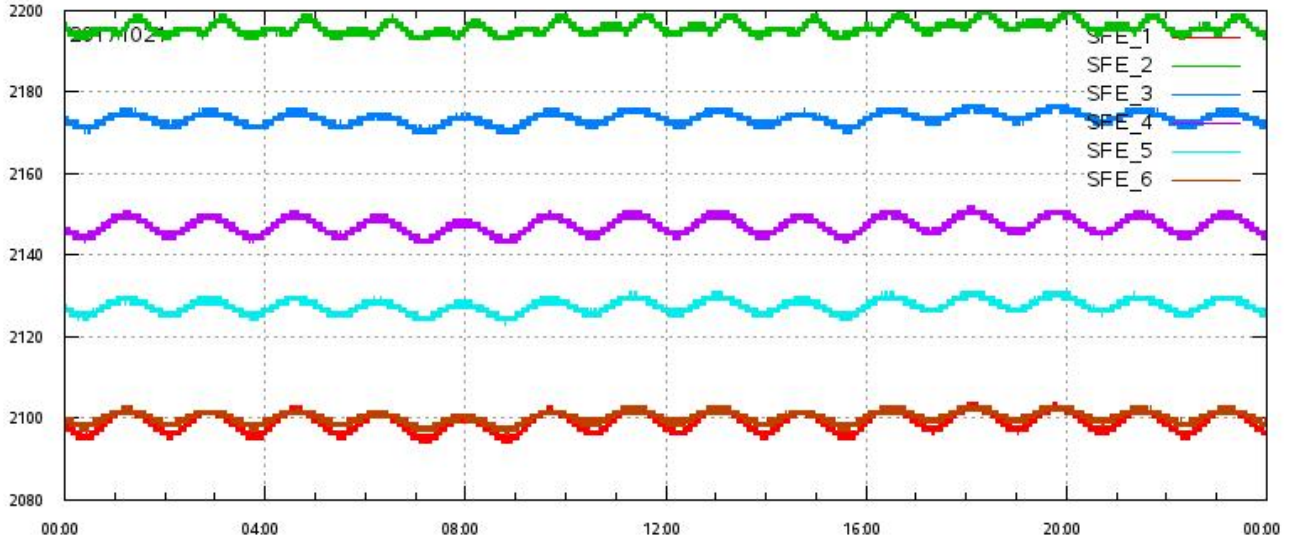
ECHO DATA (raw) for samples 30, 100, 150 and 200 vs. UTC\_LOCALISATION





# L1A Product

SFE & ANT Temperatures (raw) vs. UTC\_LOCALISATION

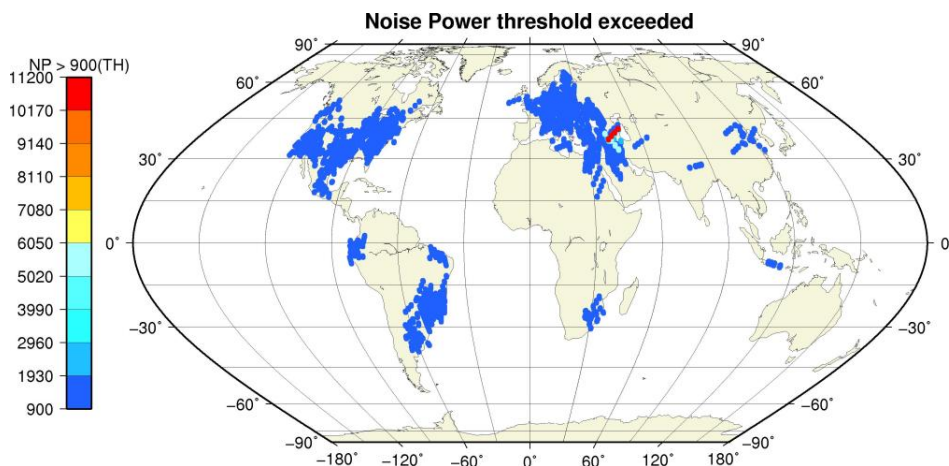
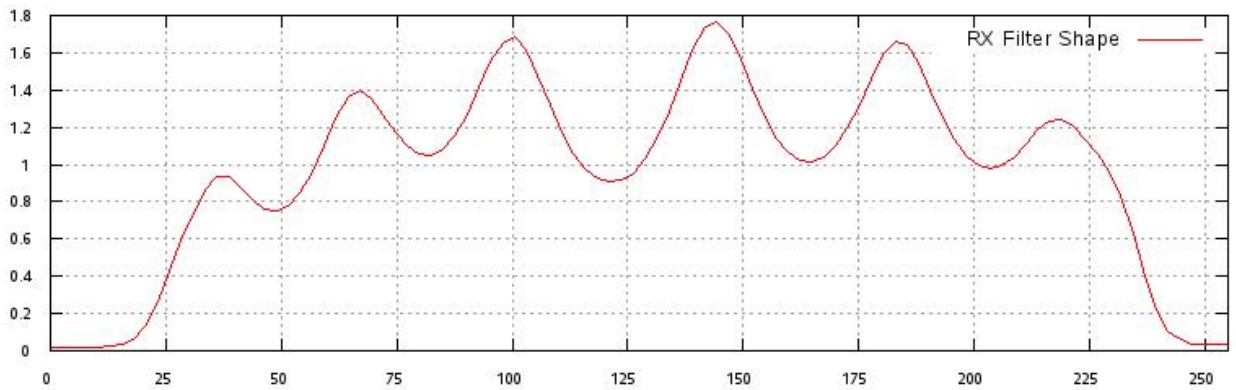
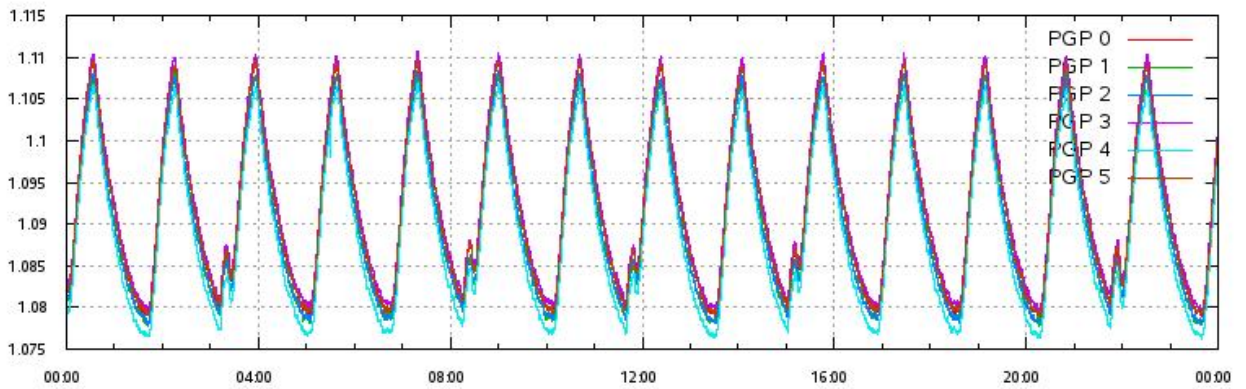
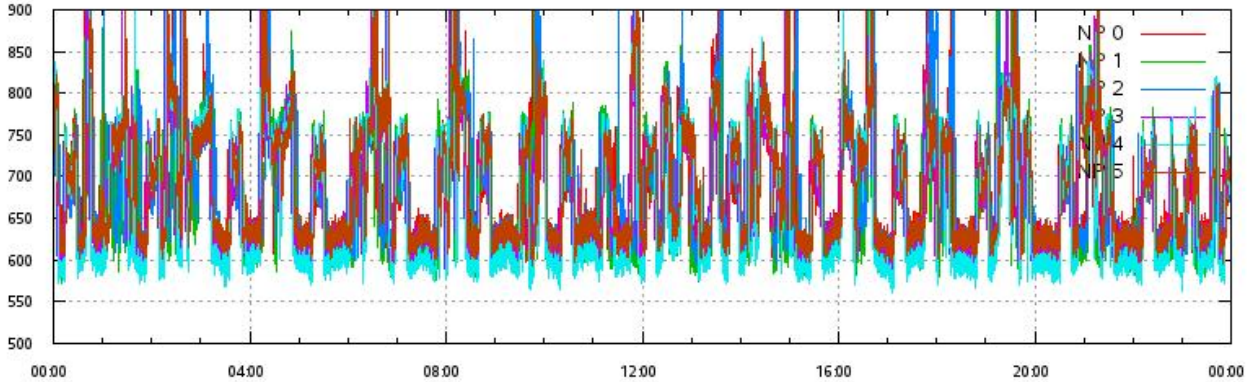


# L1A Product

Noise Power & Power Gain Product per beam 0-5 vs. UTC\_LOCALISATION

RX Filter Shape average over sample number

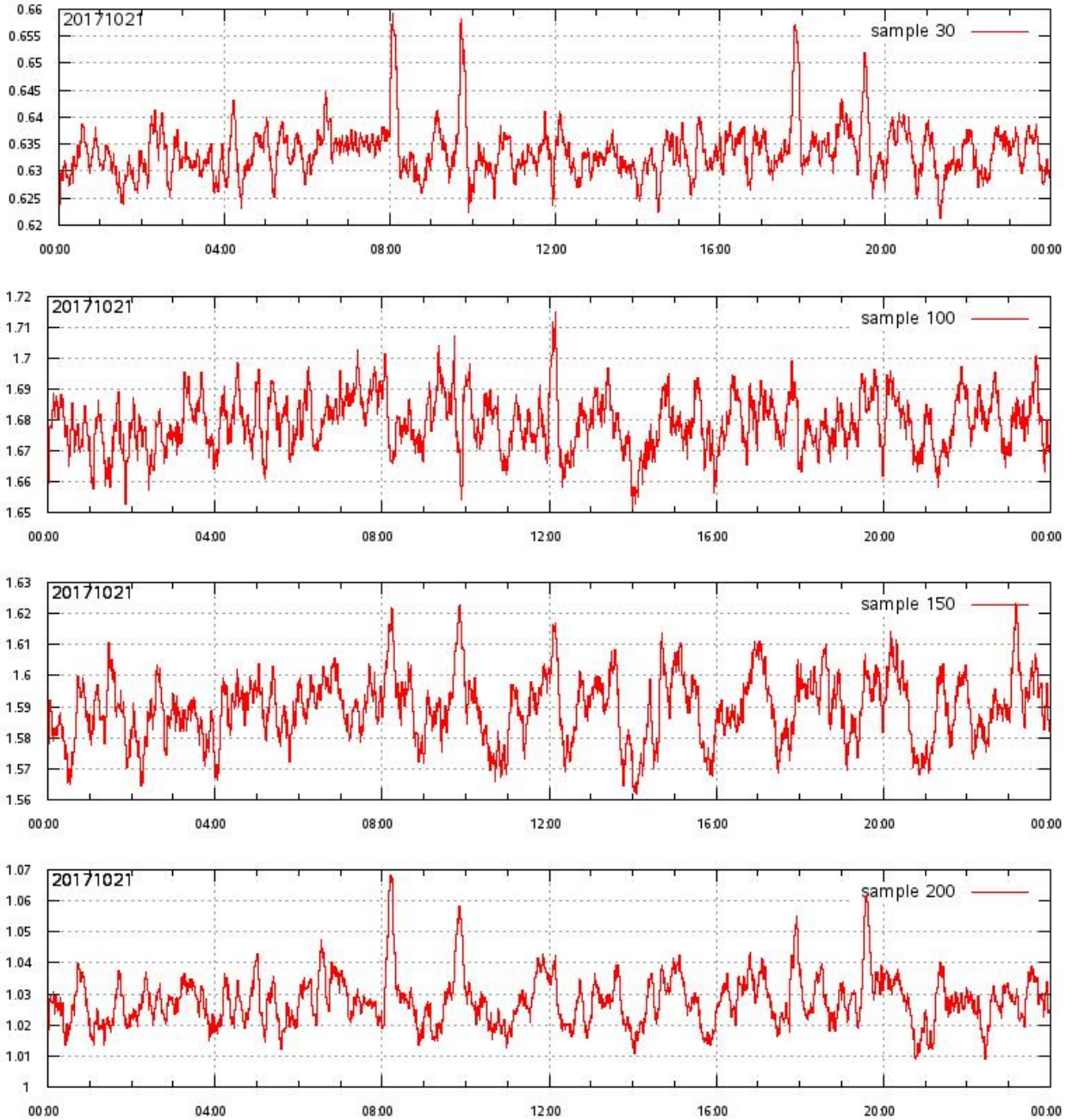
Noise Power threshold exceeded (TH=900) on map





# L1A Product

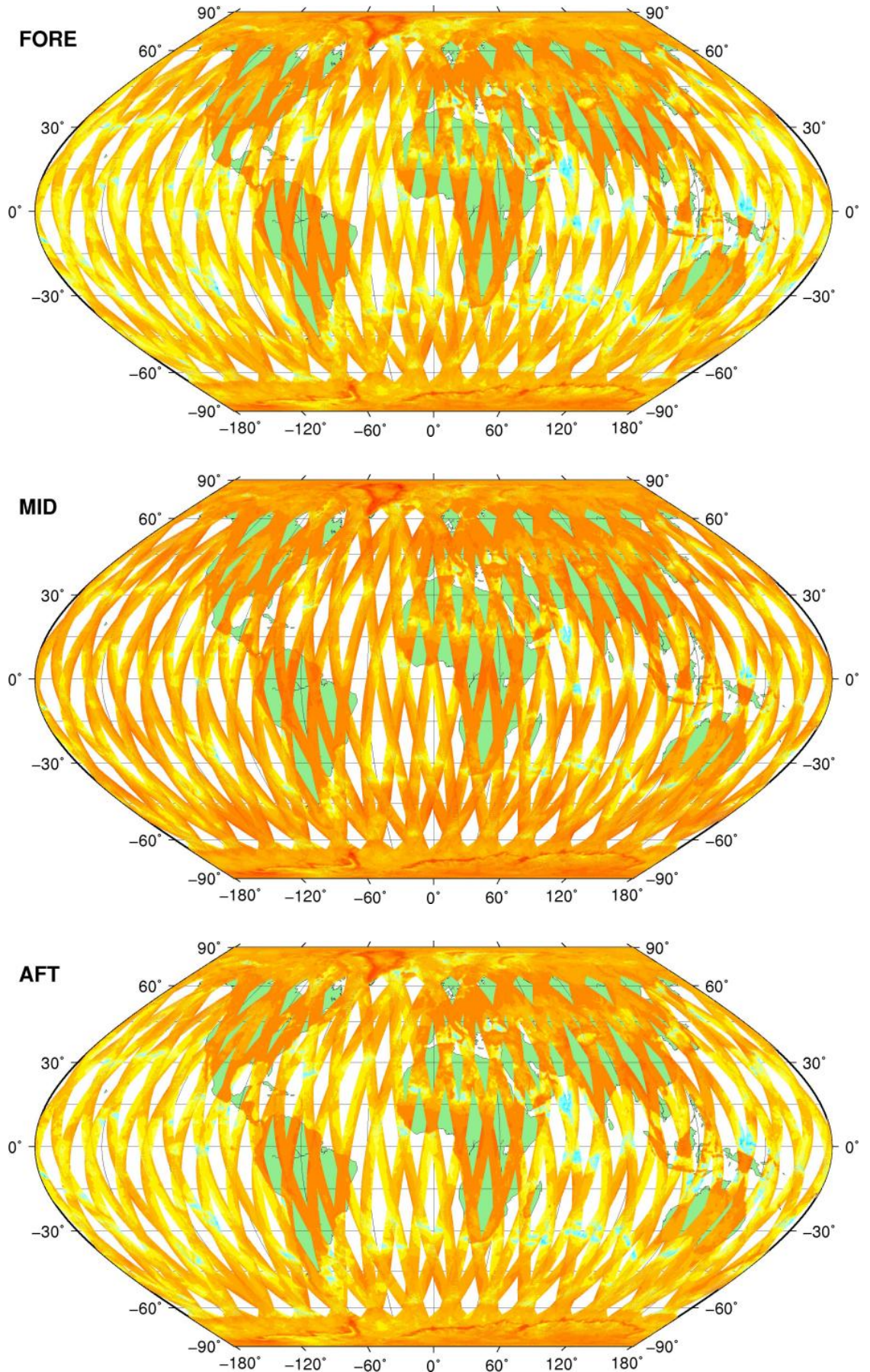
RX filter shape in detail for sample 30,100,150, 200 & max vs. UTC\_LOCALISATION



# SZO Product

Sigma0\_TRIP Coverage map

## SIGMA0\_TRIP Coverage

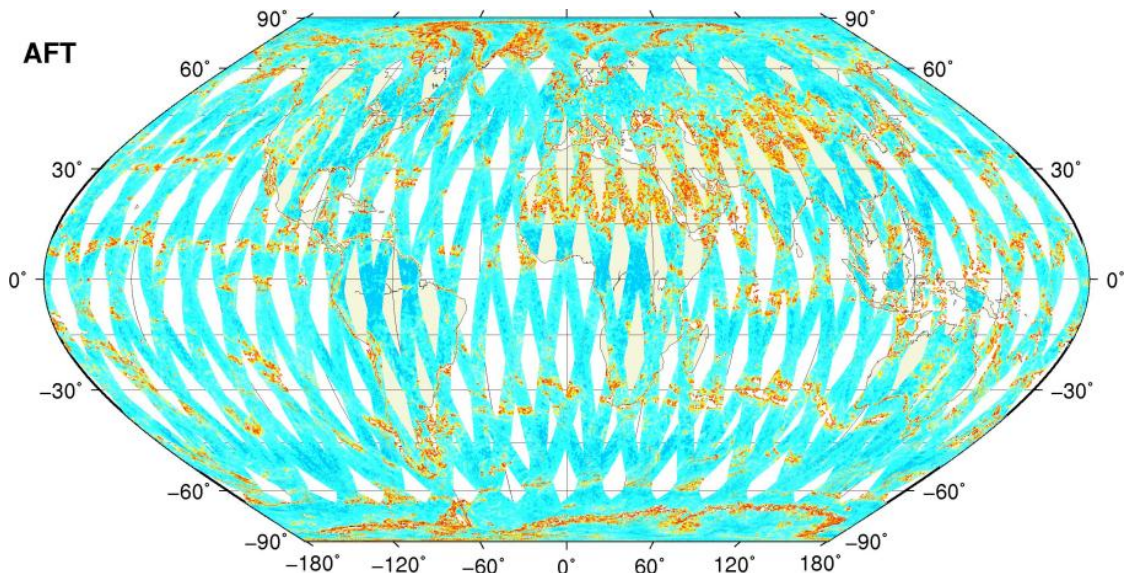
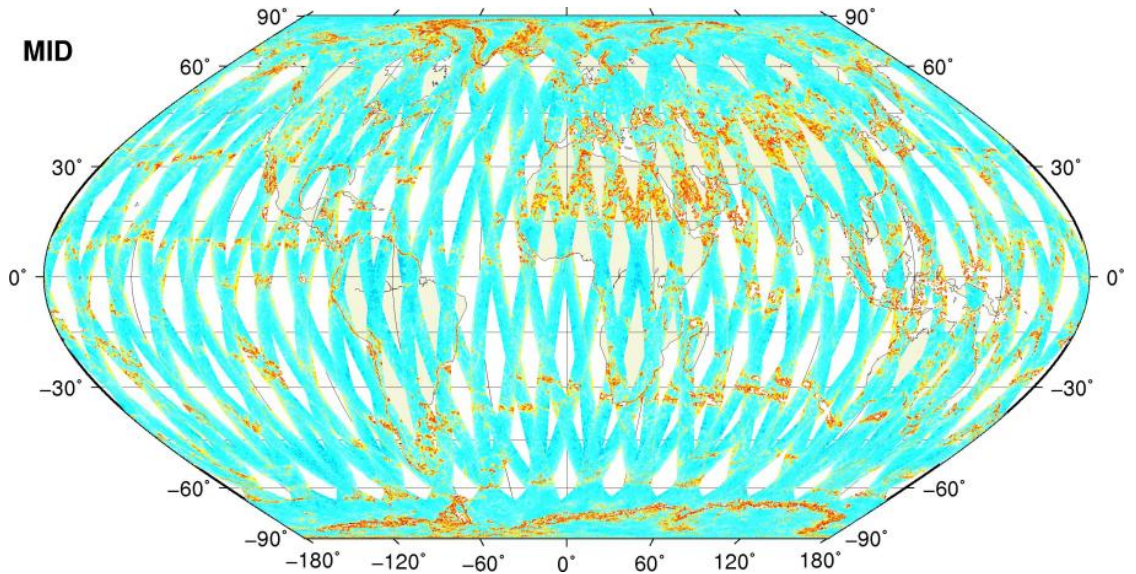
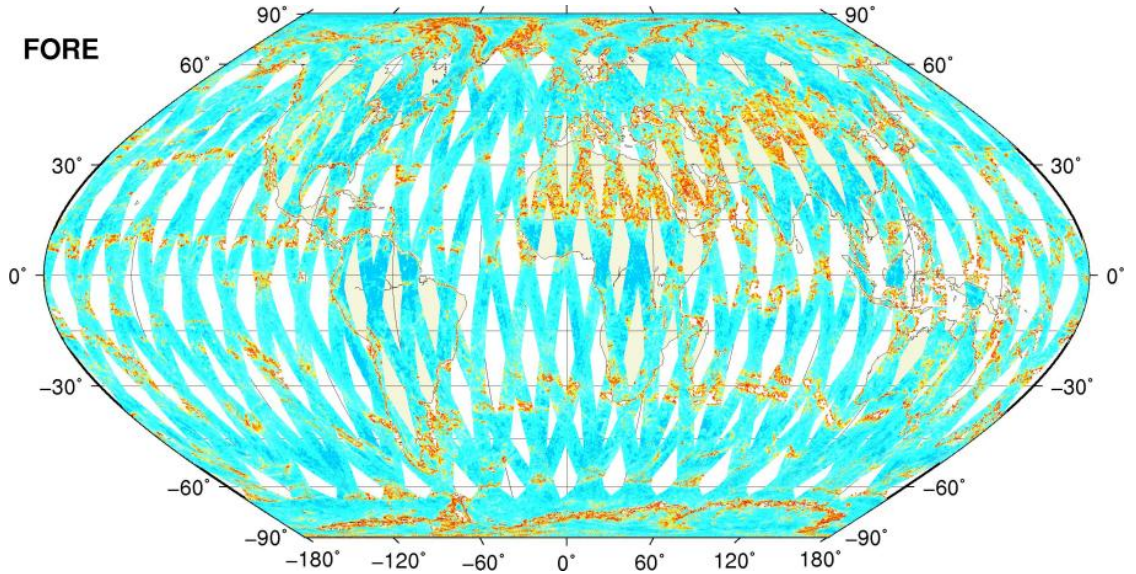




# SZO Product

## Kp Coverage map

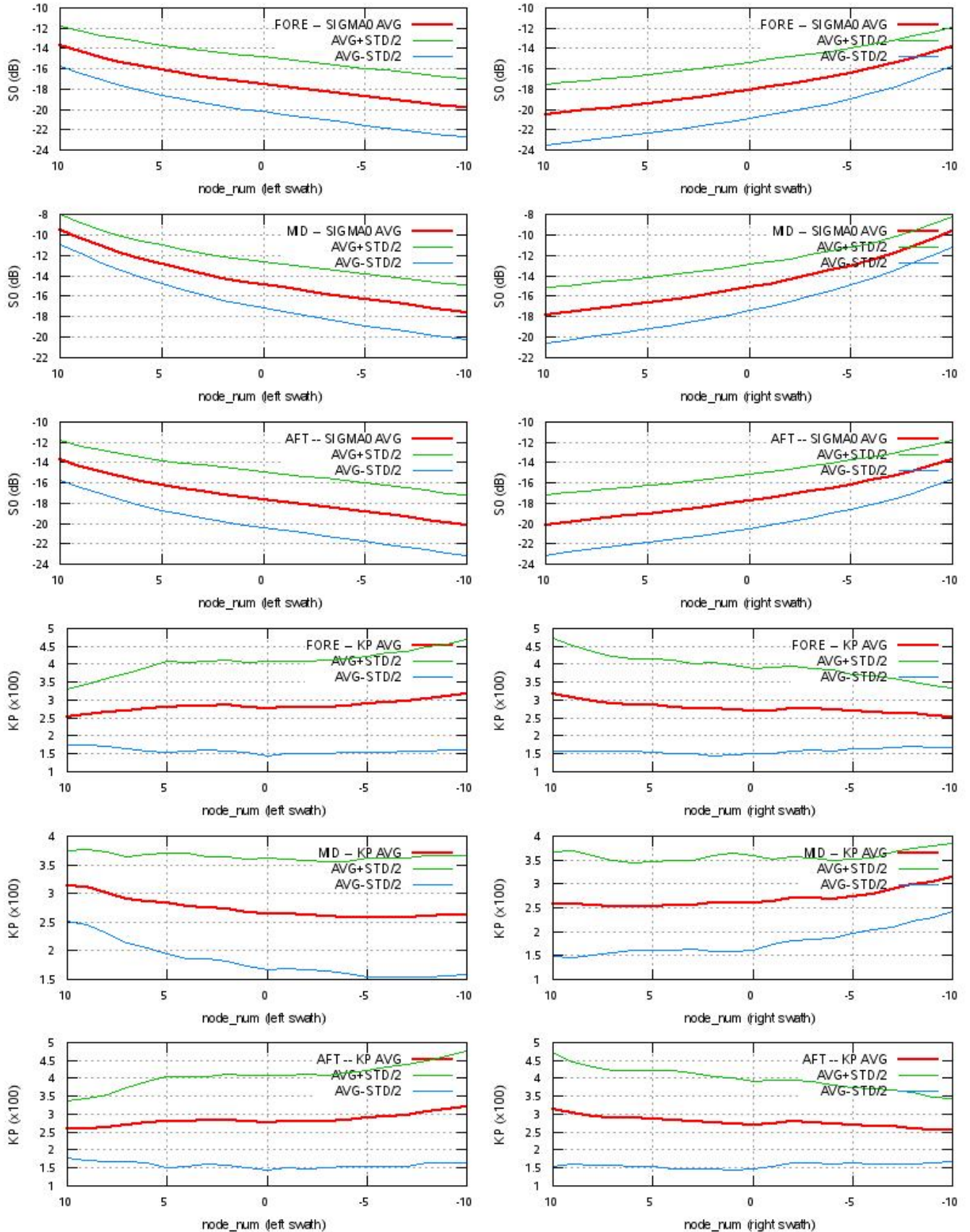
### Kp Coverage





# SZO Product

## S0 - Kp Statistics





# SZO Product

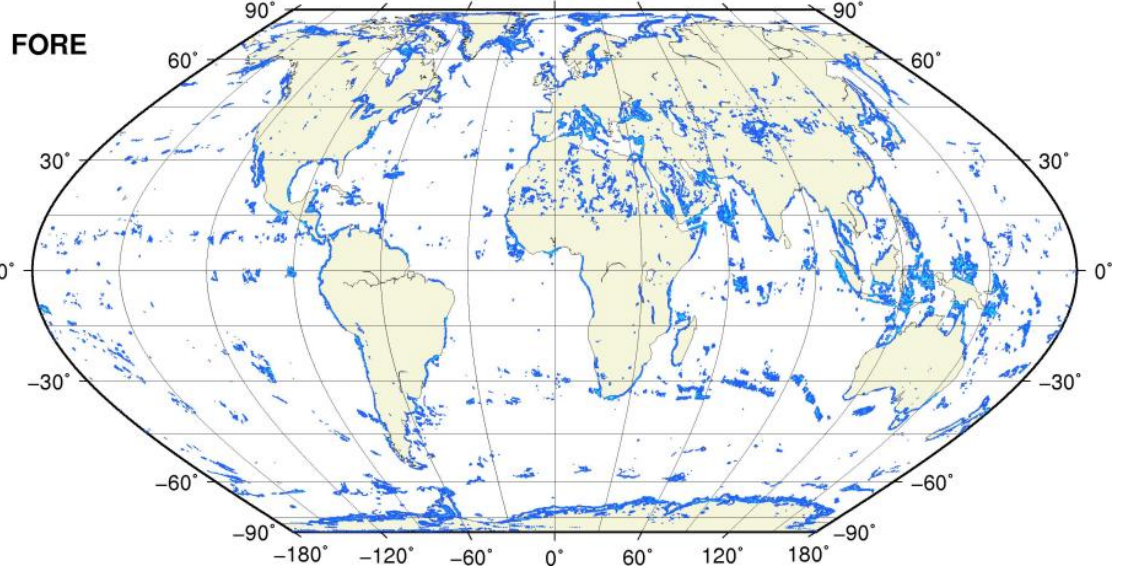
Kp Outliers on map

$0.06 < Kp < 1.0$

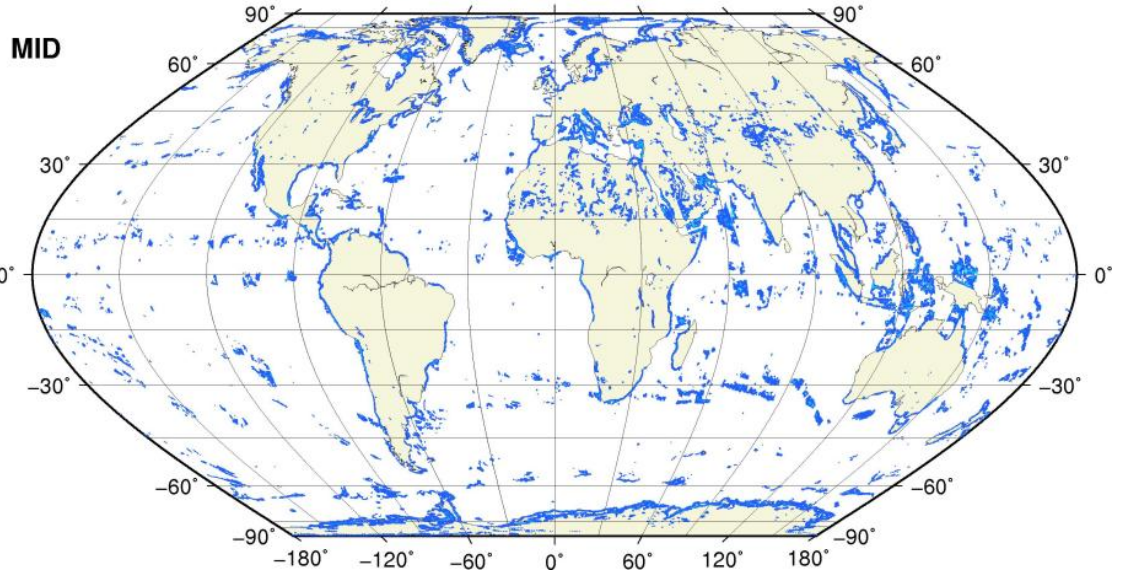
0.1 0.2 0.3 0.4 0.5 0.6 0.7 0.8 0.9 1.0



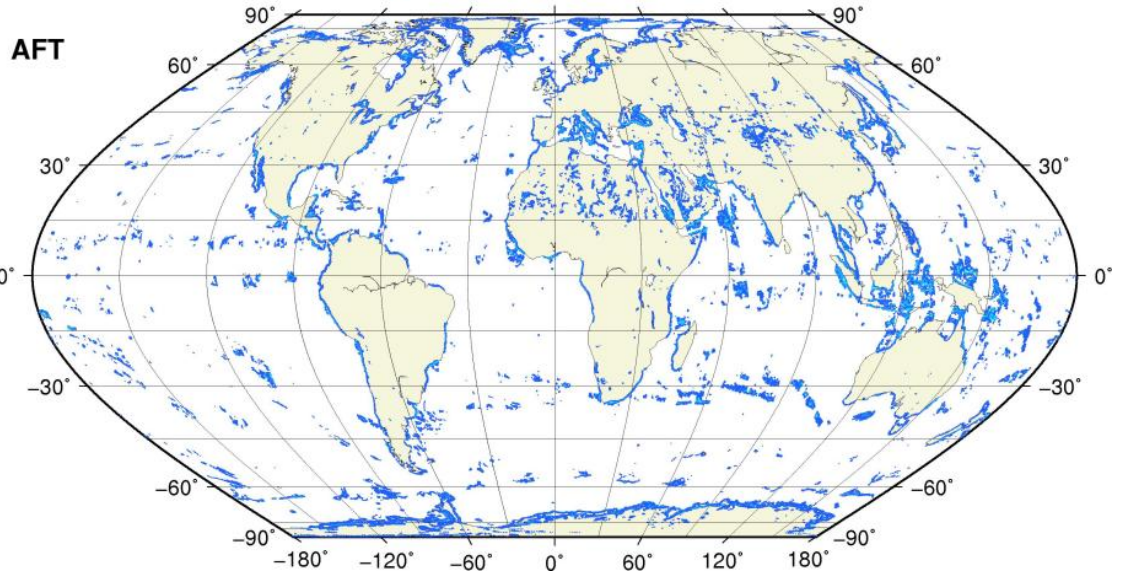
● KP = 1.0 #rec=0



● KP = 1.0 #rec=0



● KP = 1.0 #rec=0

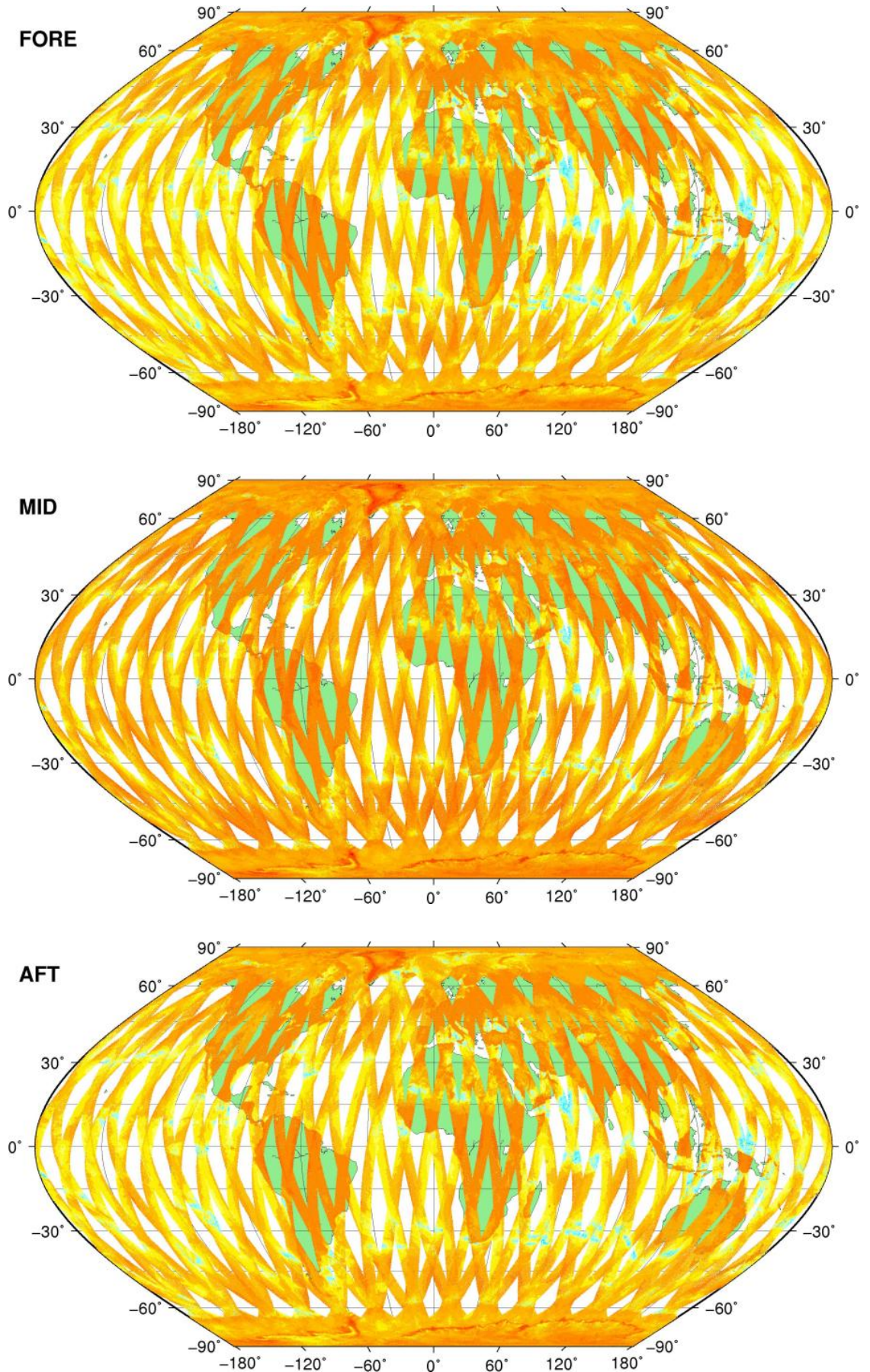
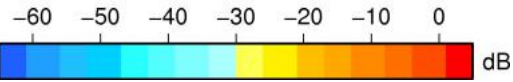




# SZR Product

Sigma0\_TRIP Coverage map

## SIGMA0\_TRIP Coverage

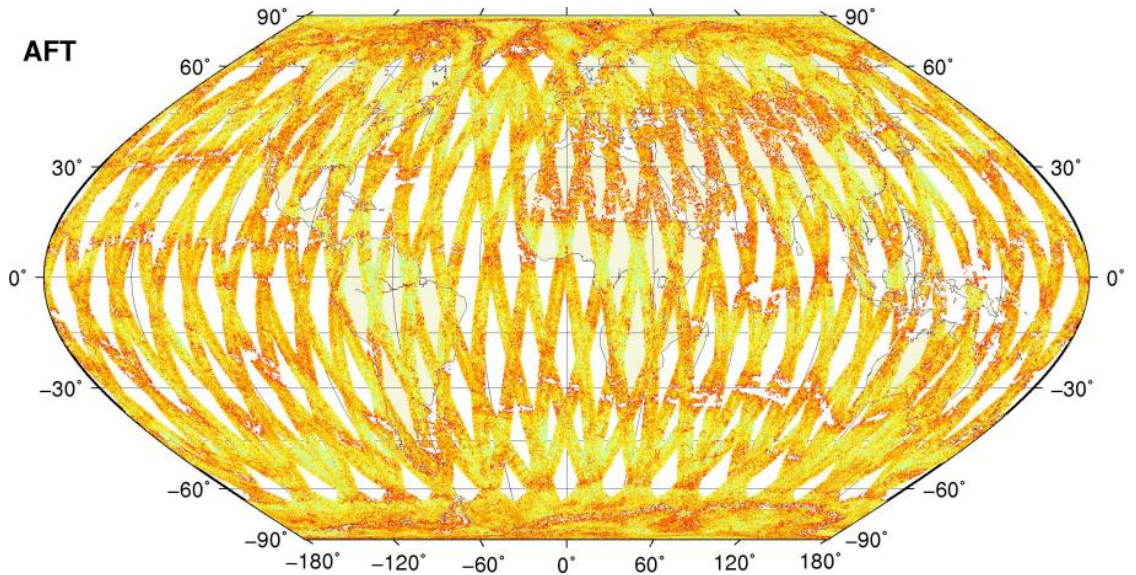
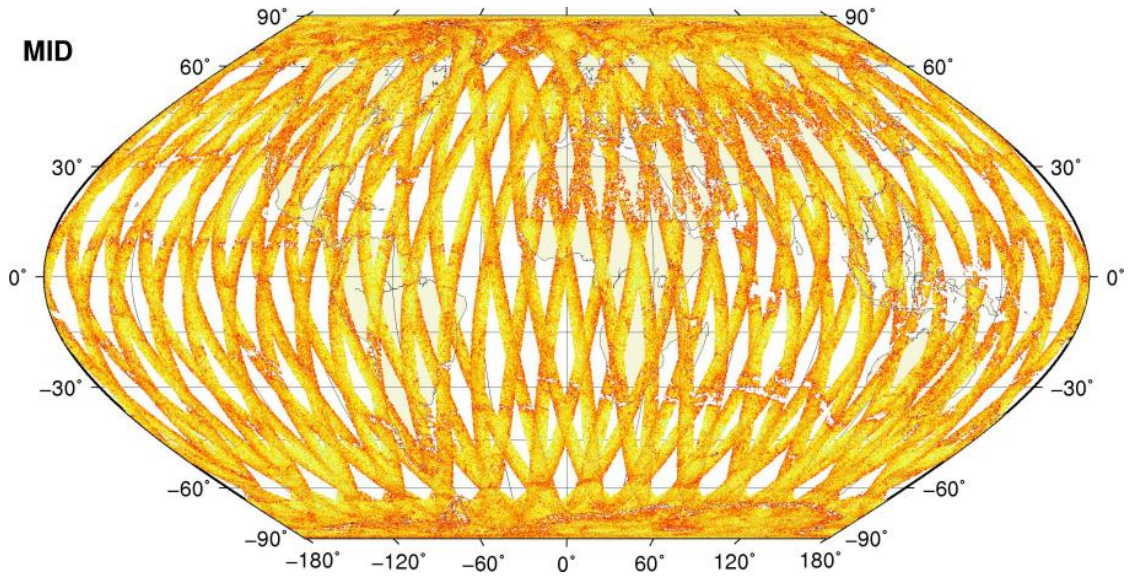
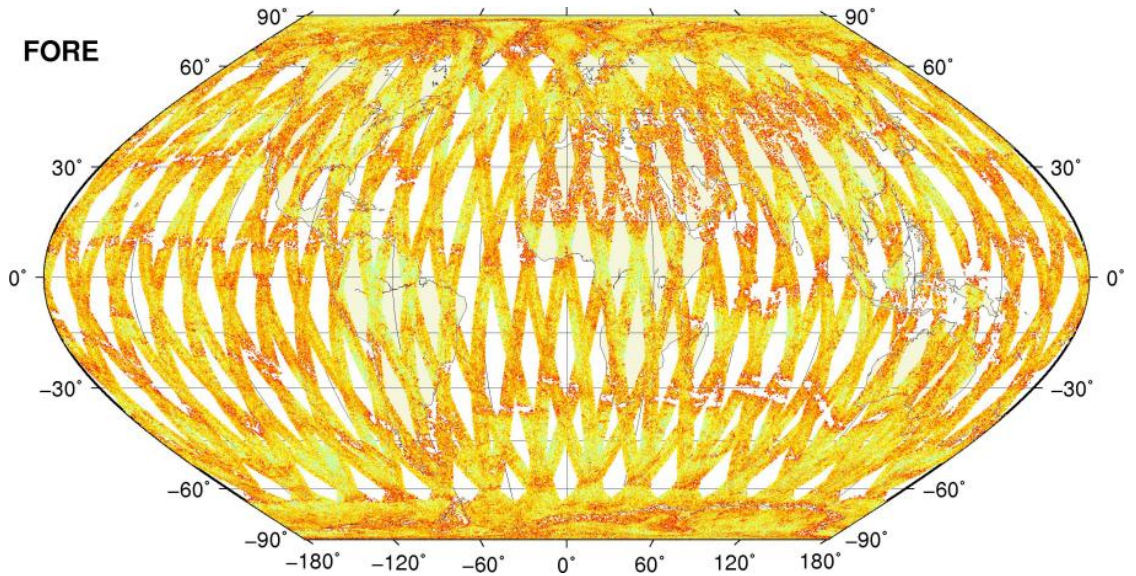




# SZR Product

Kp Coverage map

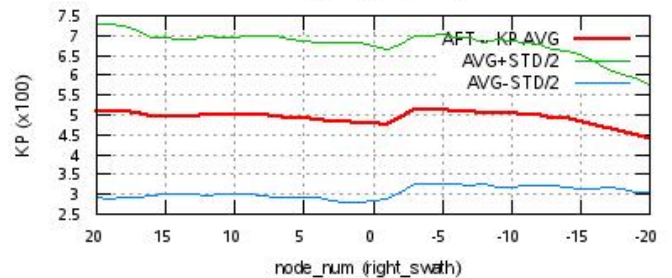
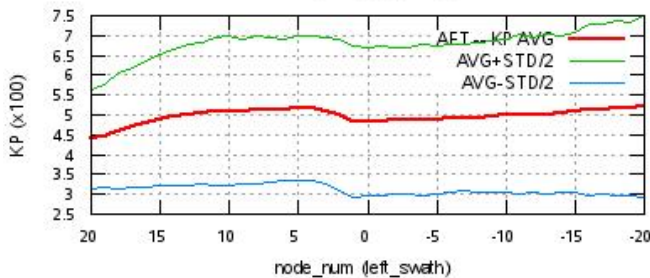
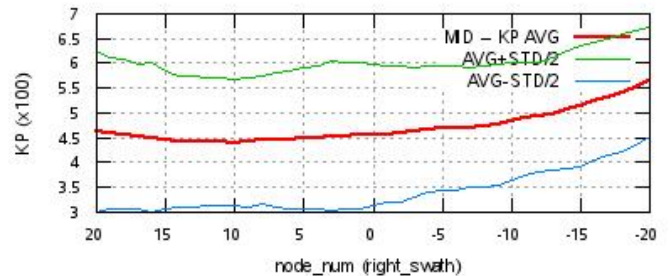
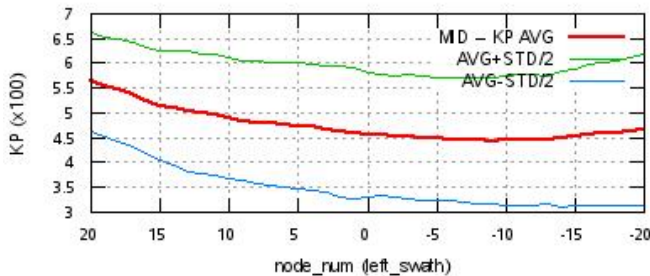
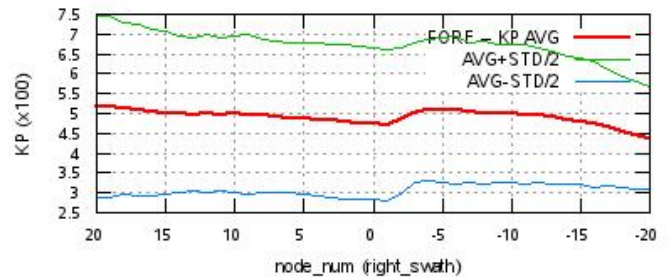
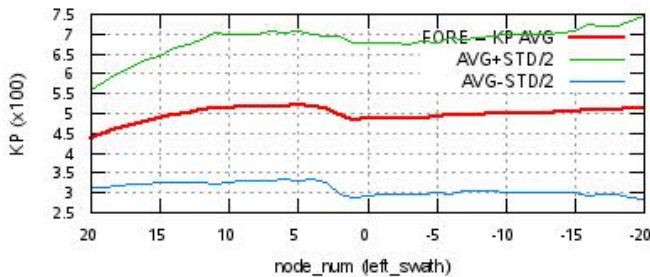
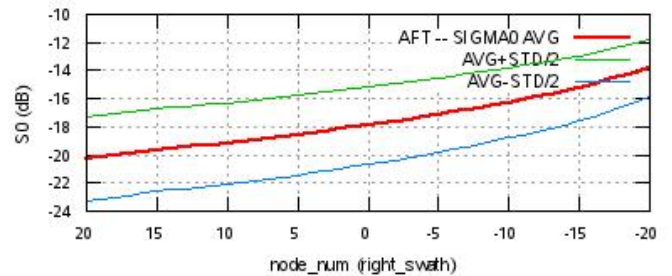
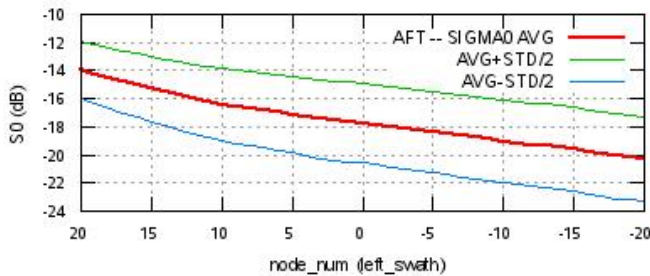
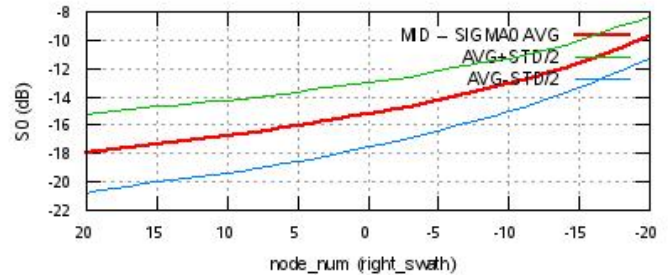
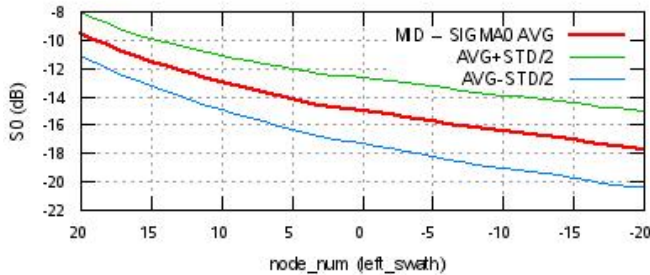
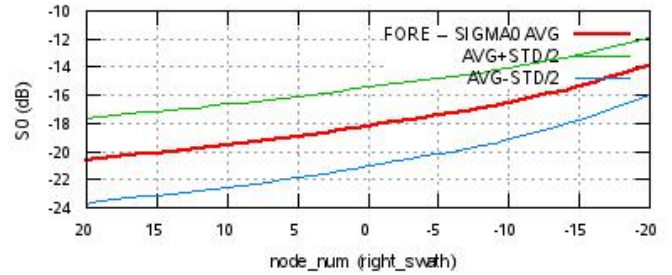
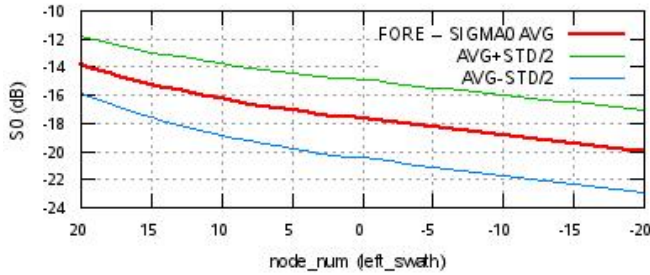
## Kp Coverage





# SZR Product

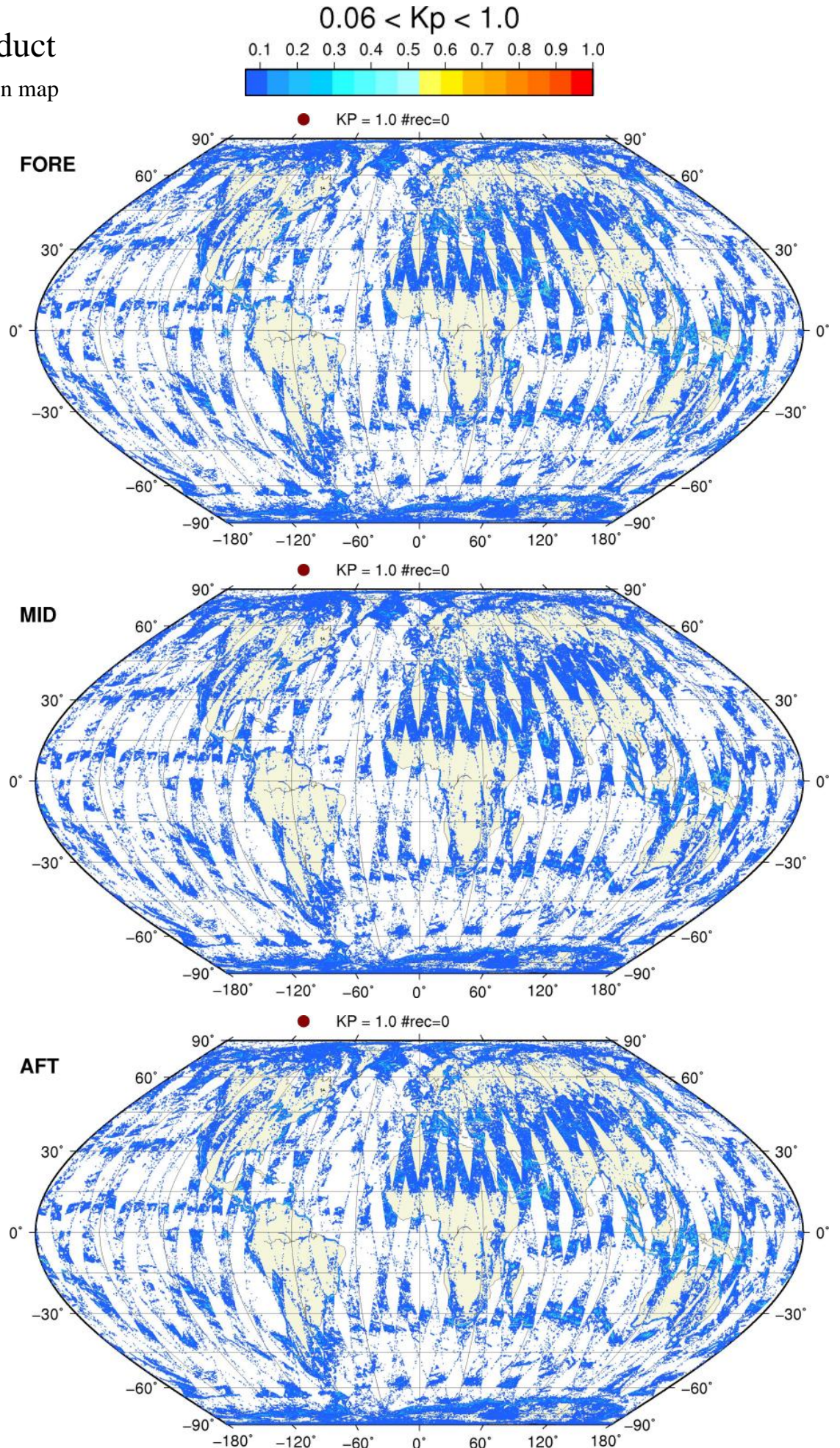
## S0 - Kp Statistics





# SZR Product

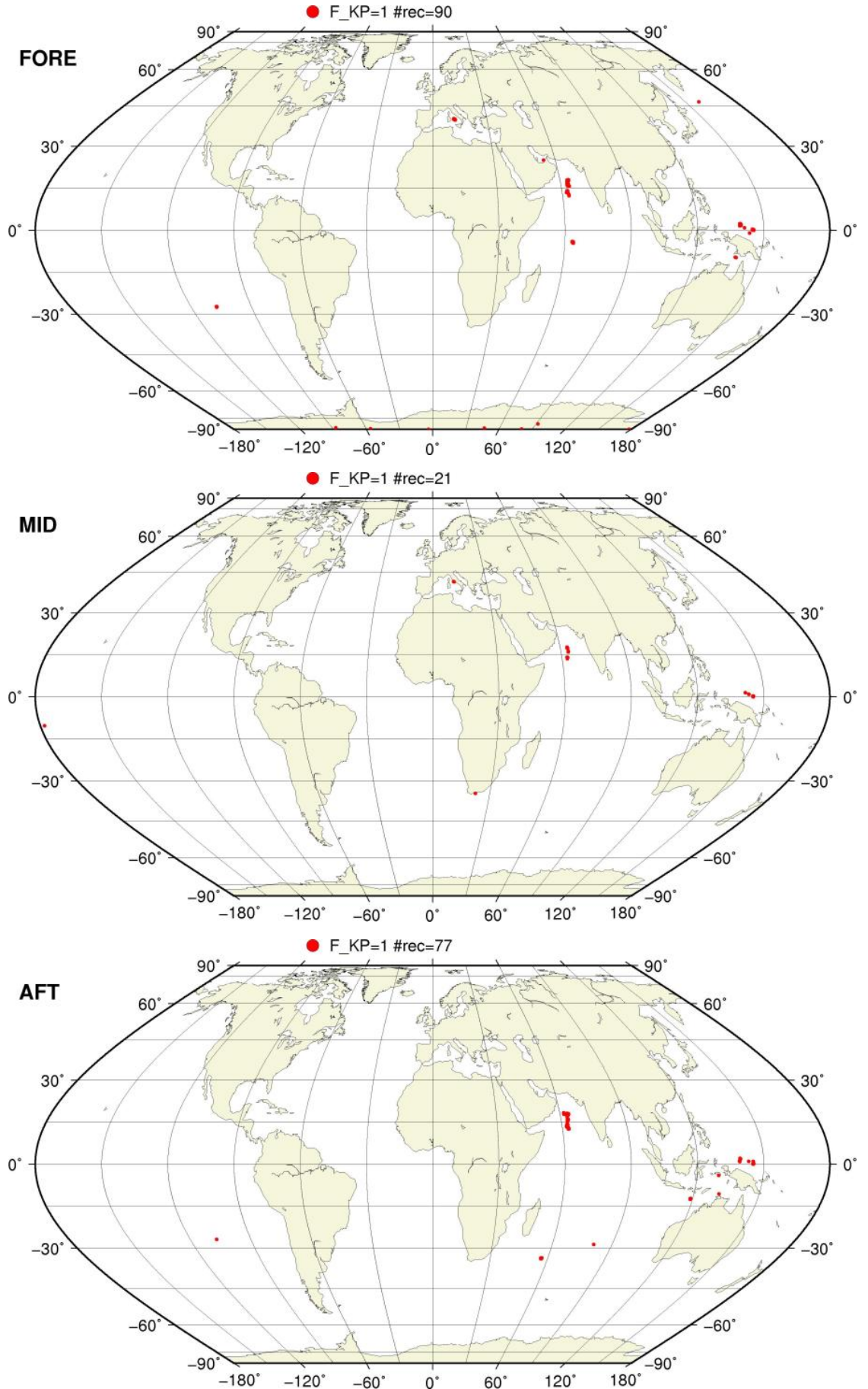
Kp Outliers on map





# SZO Flagged Data Coverage

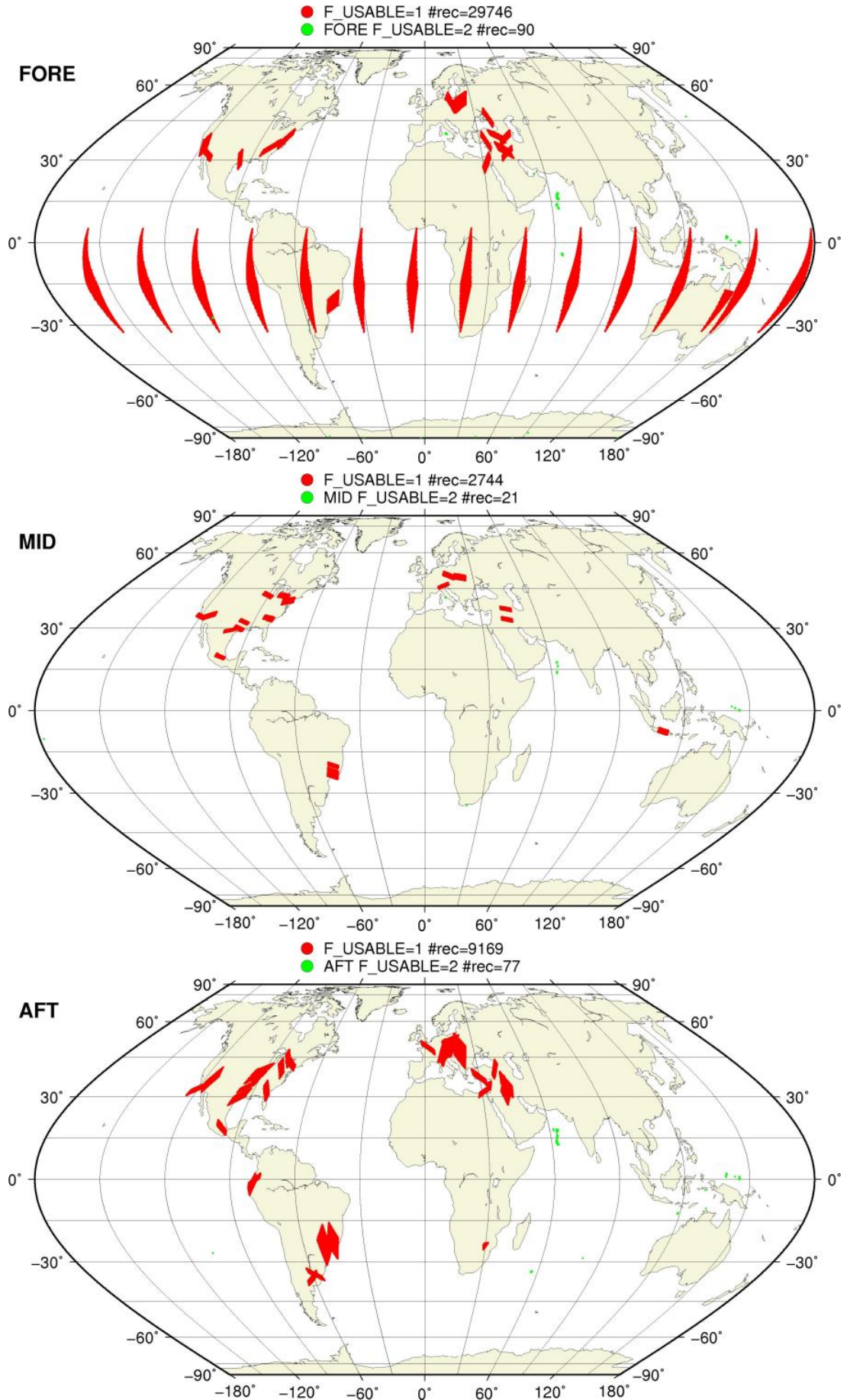
F\_KP = 1 on map





# SZO Flagged Data Coverage

F\_USABLE = 1 or 2 on map



# SZO Flagged Data Coverage

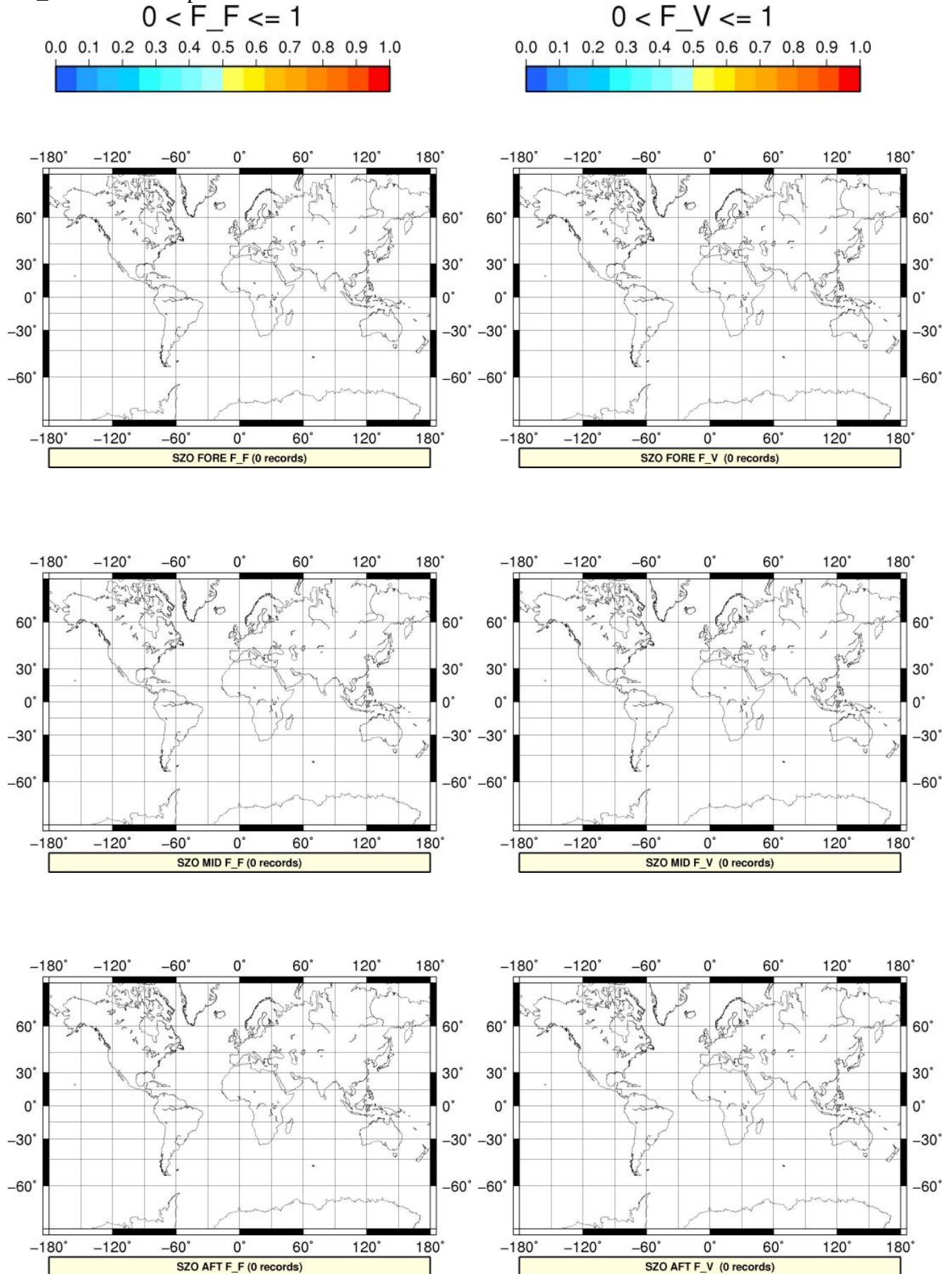
$0 < F_{OA} \leq 1$  on map





# SZO Flagged Data Coverage

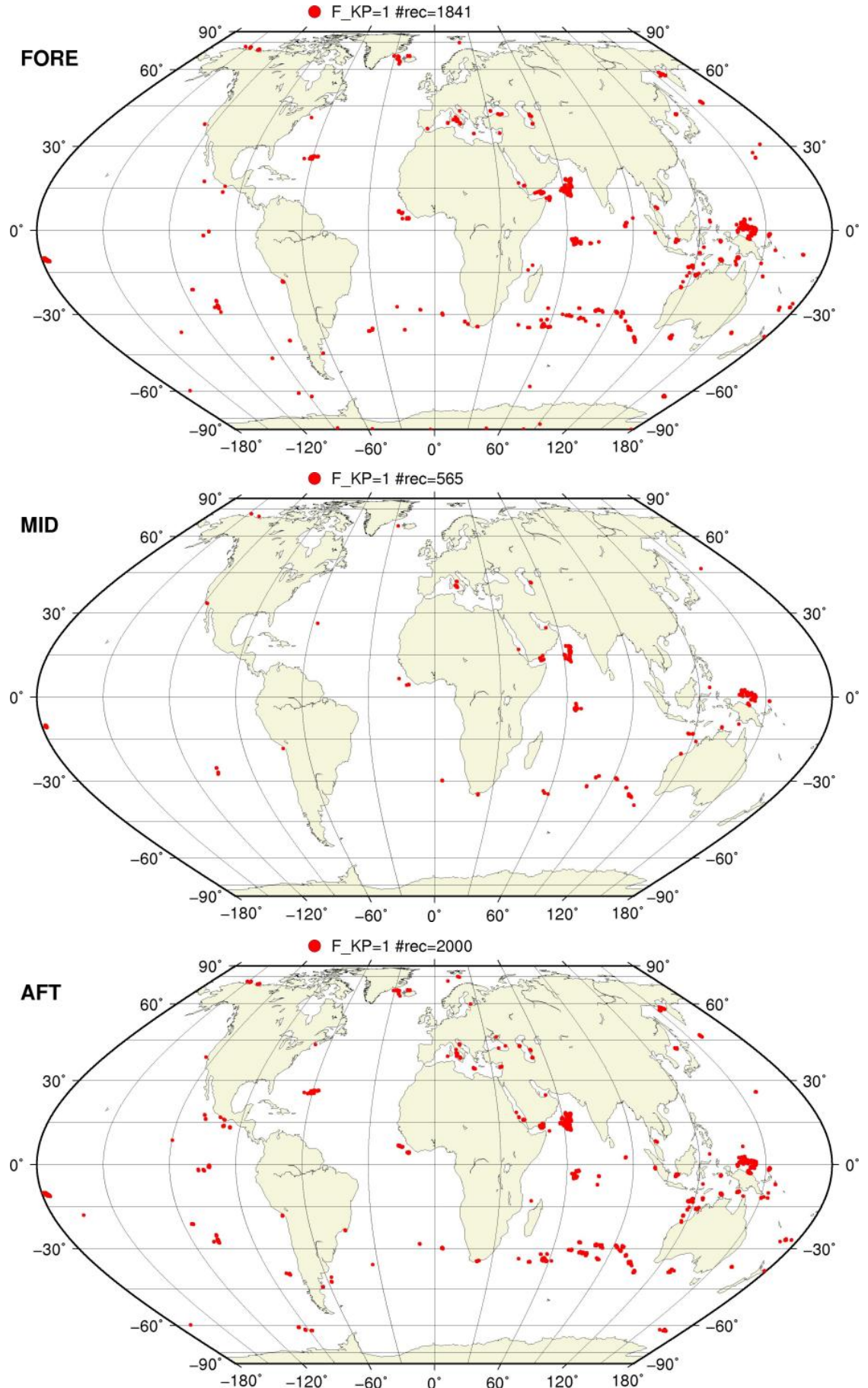
$0 < F_{F/V} \leq 1$  on map





# SZR Flagged Data Coverage

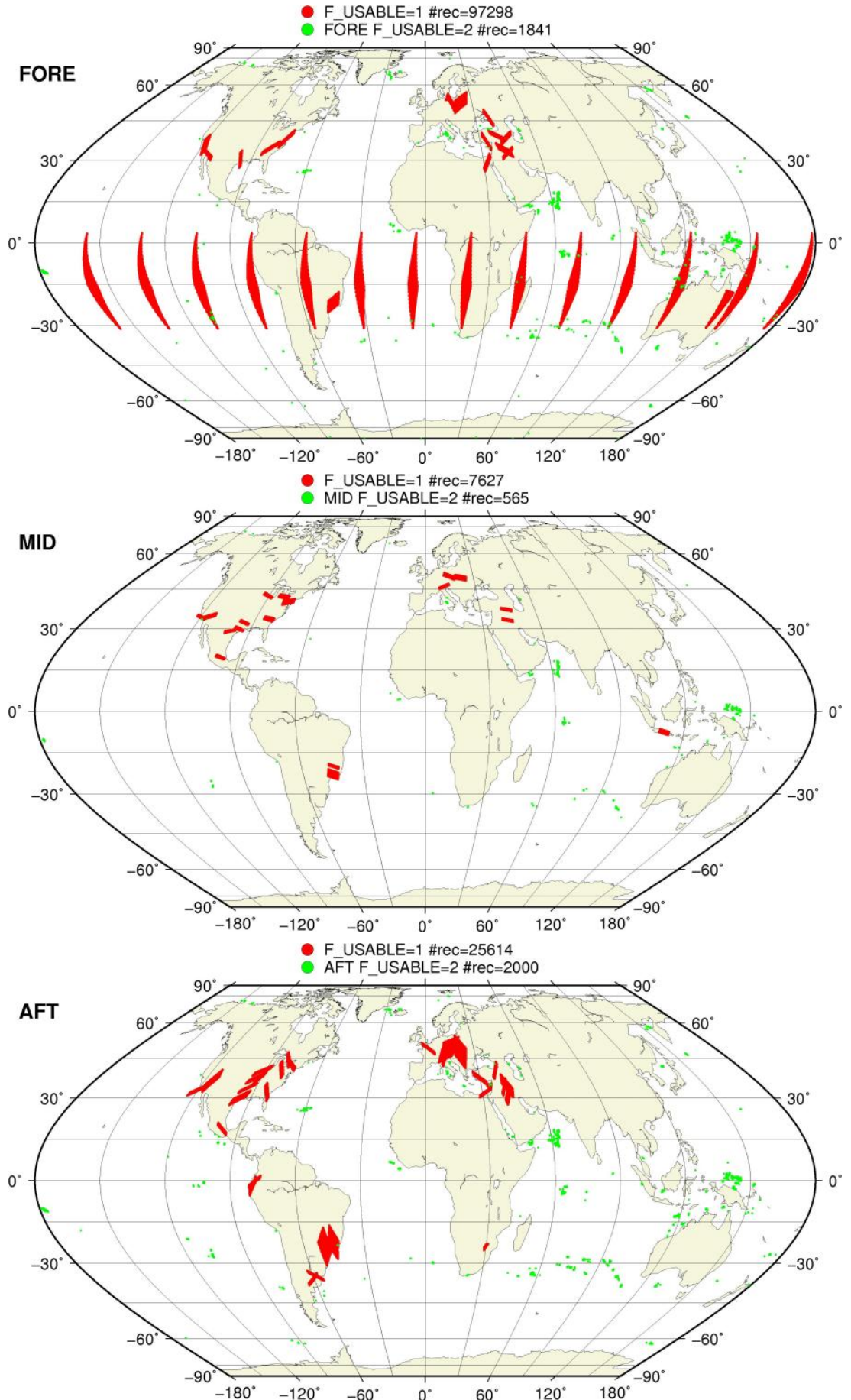
F\_KP = 1 on map





# SZR Flagged Data Coverage

F\_USABLE = 1 or 2 on map



# SZR Flagged Data Coverage

$0 < F_{OA} \leq 1$  on map





# SZR Flagged Data Coverage

$0 < F_{F/V} \leq 1$  on map

$0 < F_F \leq 1$



$0 < F_V \leq 1$

