

ASCAT DAILY Report

Metop-B

OPE

DAY 2015_121

20150501000000 - 20150501235959

DATA STATISTICS

BASED ON ORBITS (#14)

13572 13573 13574 13575 13576 13577 13578 13579 13580 13581 13582 13583 13584
13585 13586

DB STATISTICS : OPE M01_20150501

SMO	480	1.65	.56	.85	3.12
SMR	480	3.70	.60	2.68	6.29
SZF	480	.60	1.73	.21	22.57
xxx	480	10.68	1.73	8.92	20.73

INGATE (STORE) STATISTICS : OPE M01_20150501

xxx_1A	/fbf/tcdras/store/gsl/ASCA_xxx_1A_M01	-- number of files (xxx_1A) : 480
SZO_1B	/fbf/tcdras/store/gsl/ASCA_SZO_1B_M01	-- number of files (SZO_1B) : 480
SZR_1B	/fbf/tcdras/store/gsl/ASCA_SZR_1B_M01	-- number of files (SZR_1B) : 480
SZF_1B	/fbf/tcdras/store/gsl/ASCA_SZF_1B_M01	-- number of files (SZF_1B) : 480
SMO_02	/fbf/tcdras/store/gsl/ASCA_SMO_02_M01	-- number of files (SMO_02) : 480
SMR_02	/fbf/tcdras/store/gsl/ASCA_SMR_02_M01	-- number of files (SMR_02) : 480

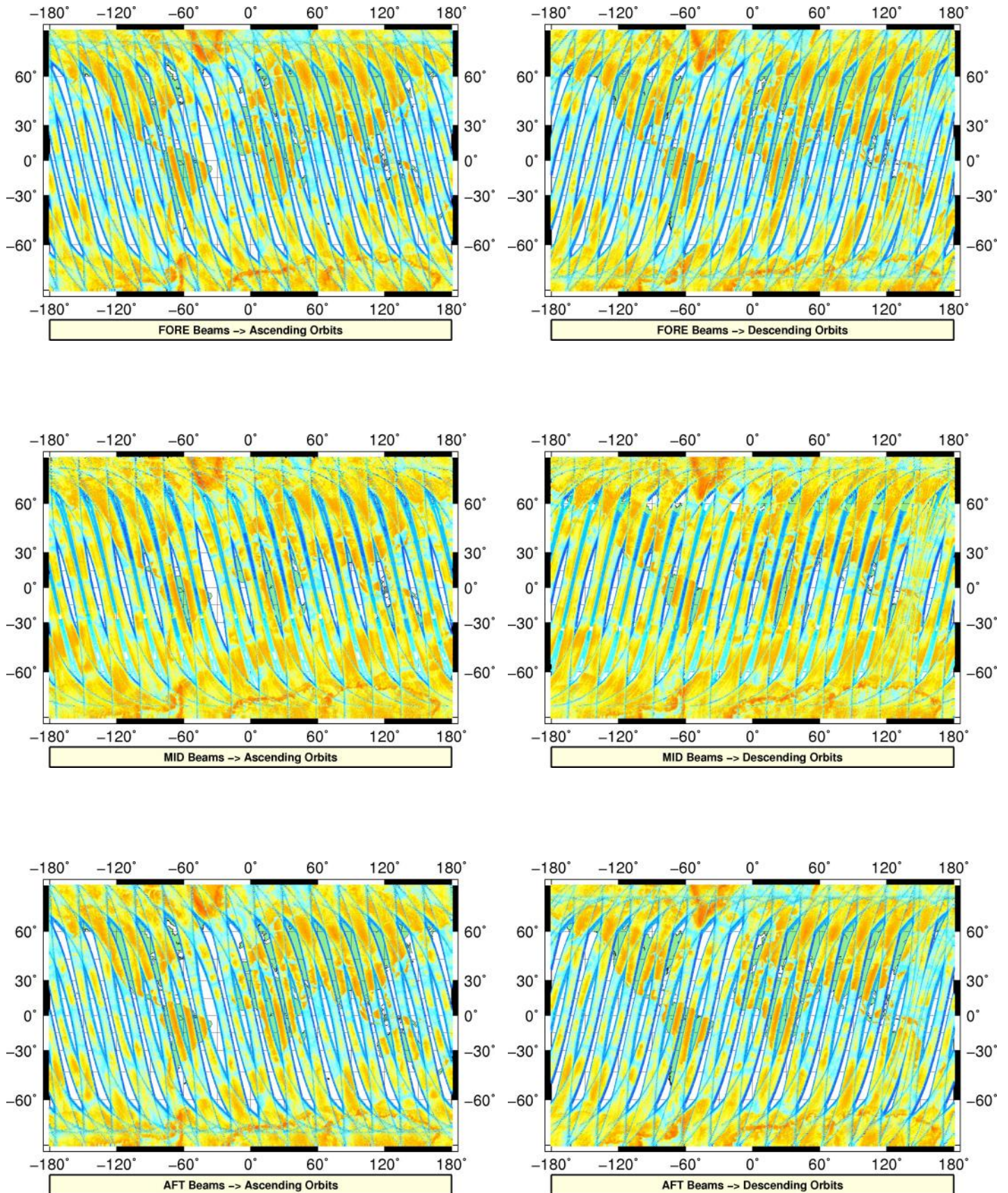
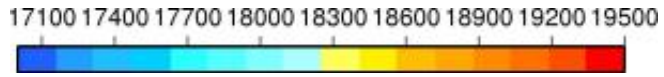
Overview

Configuration and SPHR content

Parameter	Value
SENSING START-STOP	20150501000000 - 20150501235959
ORBIT START-STOP	-
SATELLITE	M01
SW - DPU Version	3.9 (57)
SW - ICU Version	2.03 (35)
PARAM - Drive Level ID	0 (Nominal drive level as defined in the active DPU Data Set)
PARAM - DPU Data Set ID	2
PARAM - Revision ID	14
INST - Table Set ID	0 (no calibration, nominal table set used)
INST - Redundancy Config	127
	nominal ICU
	nominal DPU
	nominal RFU
	nominal HPA
	nominal SFE
	nominal SFE LNA
	nominal signal path (from HPA_B)
N_L1A_MDR	610398
N_L1A_MDR_B0	101733
N_L1A_MDR_B1	101733
N_L1A_MDR_B2	101733
N_L1A_MDR_B3	101733
N_L1A_MDR_B4	101733
N_L1A_MDR_B5	101733
N_GAPS	0
TOTAL_GAPS_SIZE	0
N_HKTM_PACKETS_RECEIVED	15898
N_F_NOISE	0
N_F_PG	0
N_V_PG	0
N_F_FILTER	0
N_V_FILTER	0
N_F_PGP	0
N_F_NP	0
N_F_ORBIT	0
N_F_ATTITUDE	0
N_F_OMEGA	0
N_F_MAN	0
N_F_OSV	0
N_F_E_TEL_PRES	0
N_F_E_TEL_IR	0
N_F_CE	0
N_V_CE	0
N_F_OA	0
N_F_TEL	0
N_F_REF	0
N_F_SA	1054535
N_F_LAND	49521271
N_F_GEO	3315176
N_F_SIGN	0
N_L1B_MDR	0
N_EMPTY_S0_TRIP	0
N_L1B_MDR_F	0
N_EMPTY_S0_TRIP_F	0
N_L1B_MDR_M	0

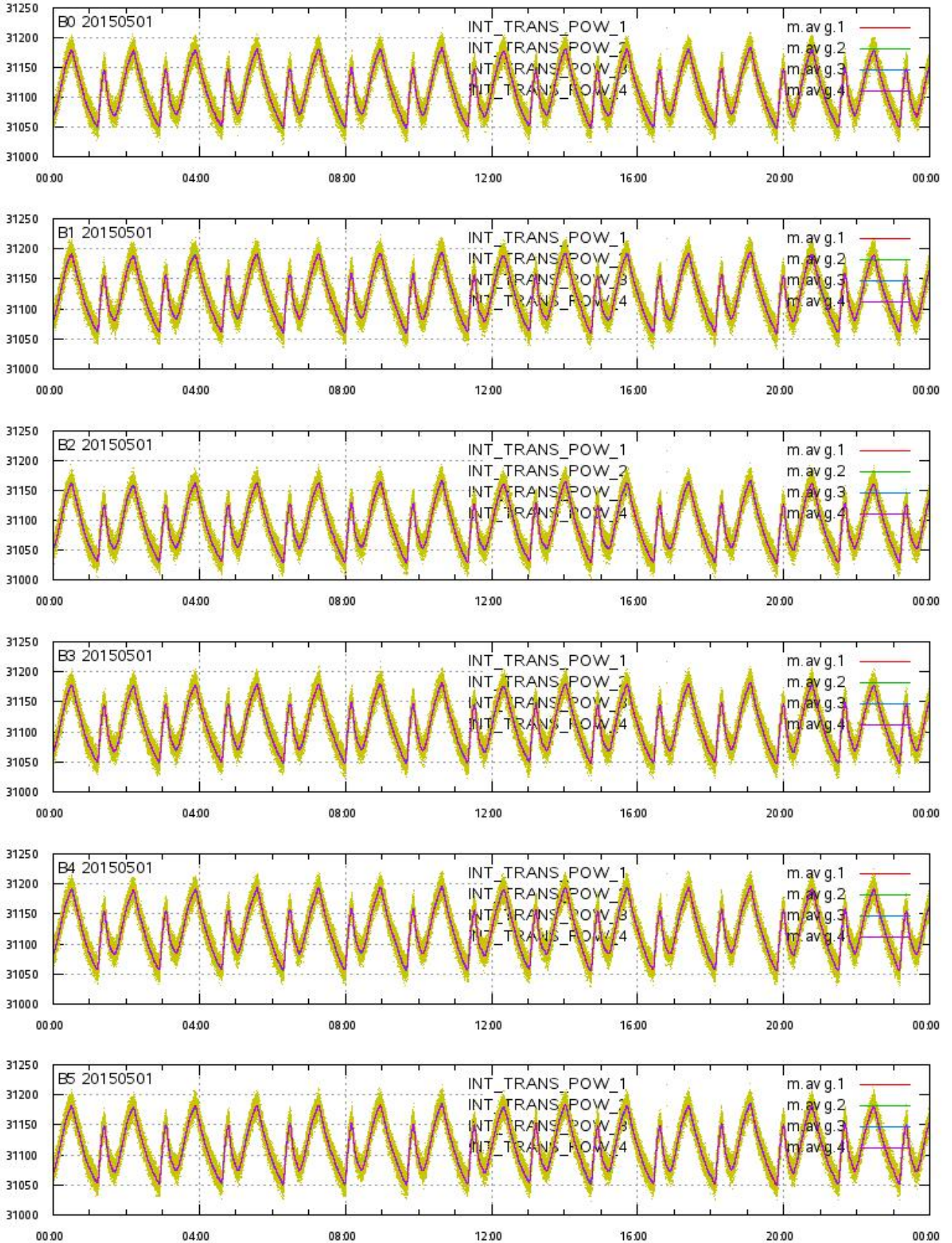
L1A Product

Echo Data Coverage maps



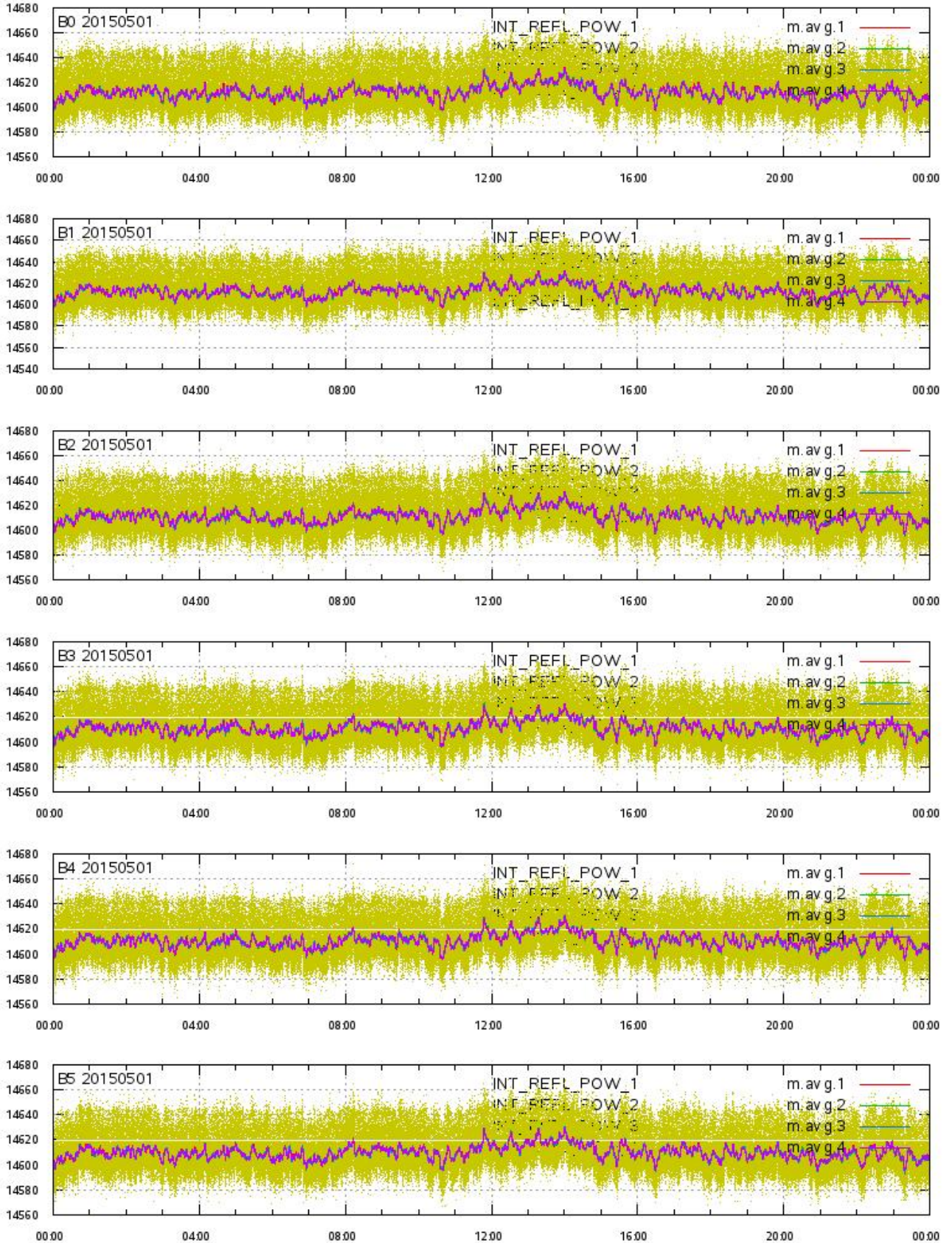
L1A Product

Integrated Transmitted Powers 1-4 per beam 0-5 vs. UTC_LOCALISATION



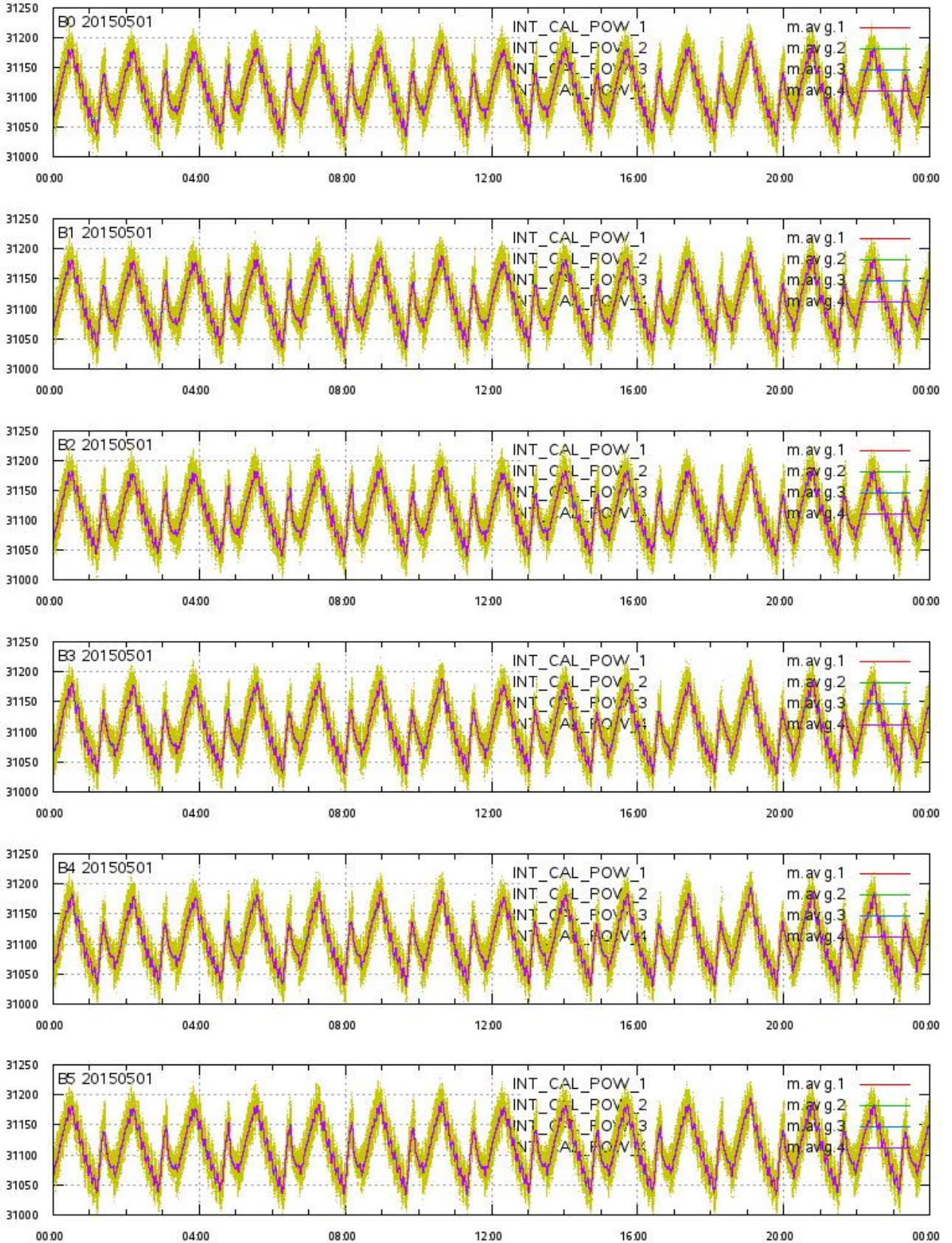
L1A Product

Integrated Reflected Powers 1-4 per beam 0-5 vs. UTC_LOCALISATION



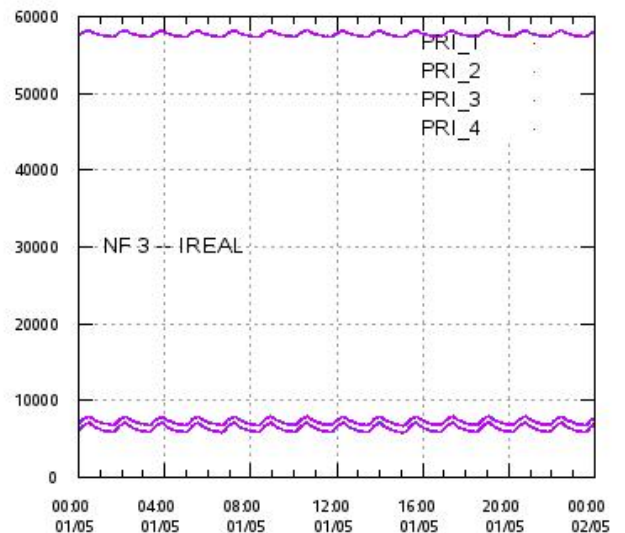
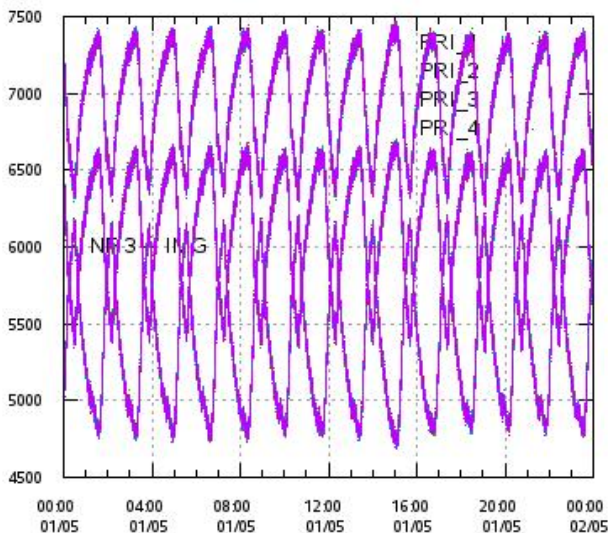
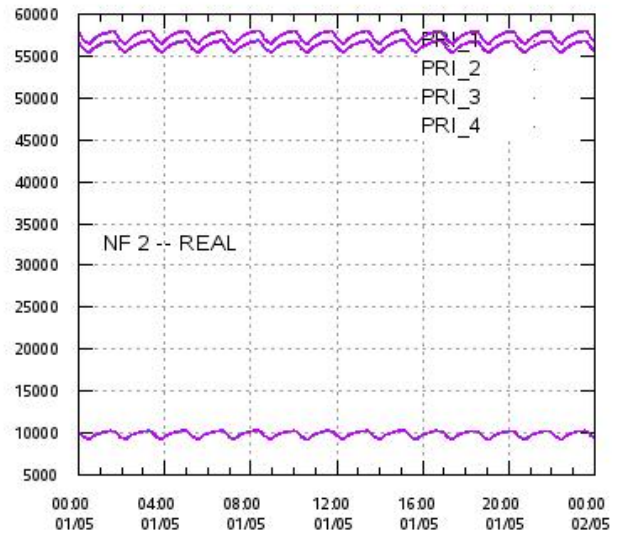
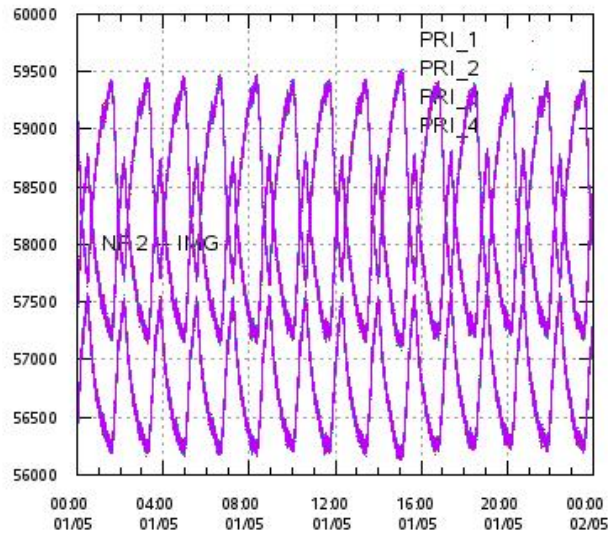
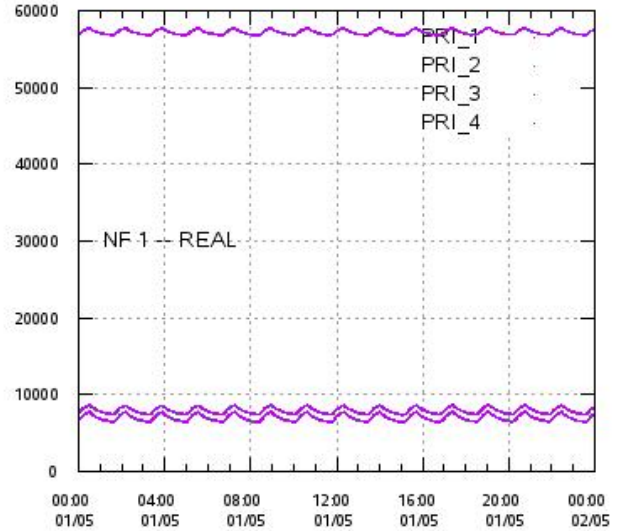
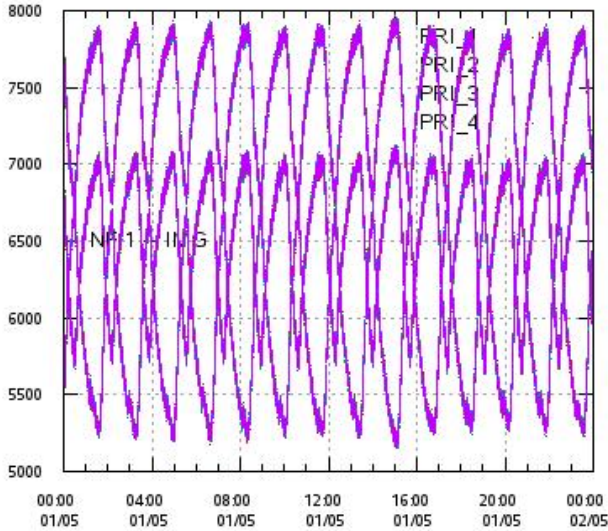
L1A Product

Integrated Calibration Powers 1-4 per beam 0-5 vs. UTC_LOCALISATION



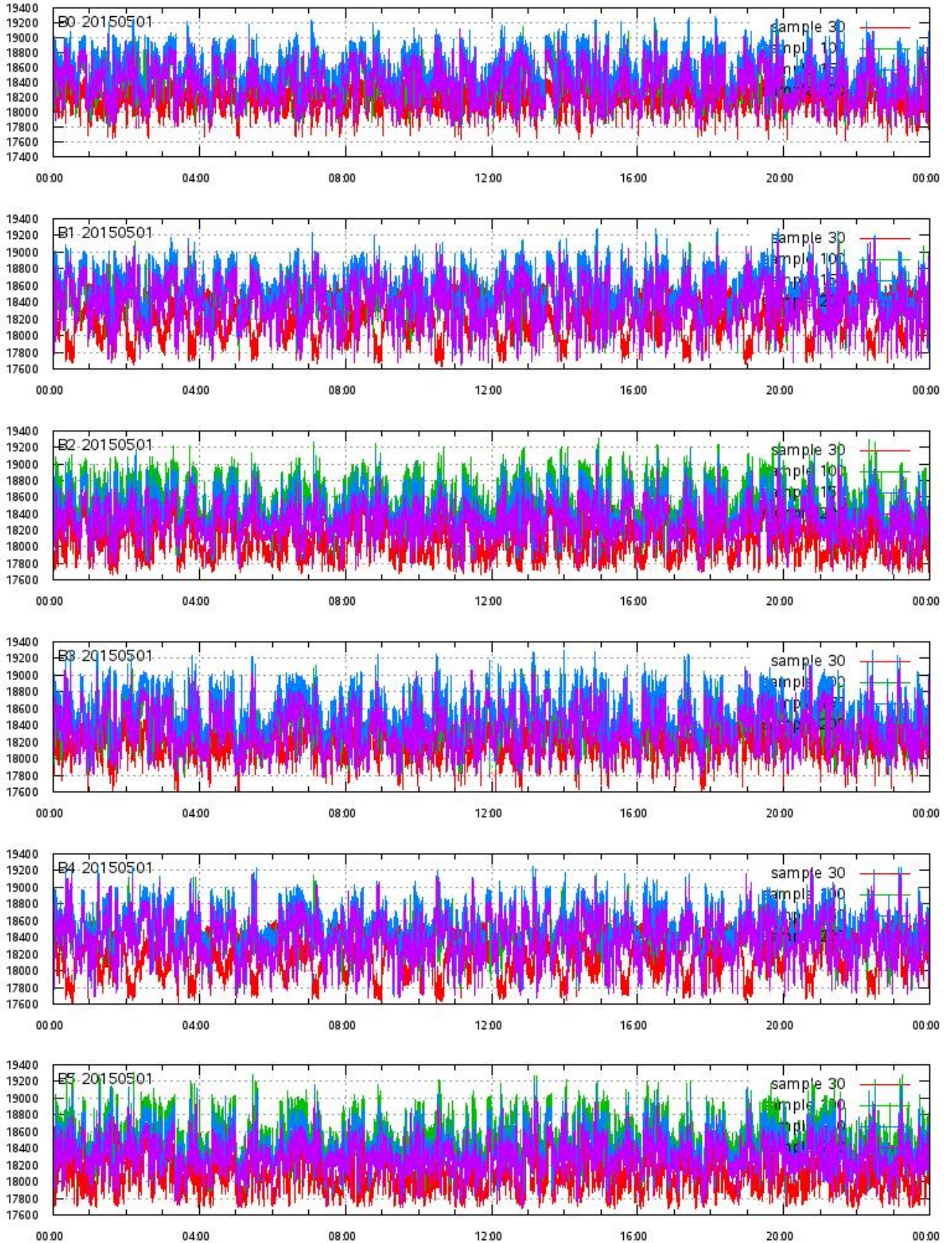
L1A Product

Calibration Powers vs. UTC_LOCALISATION



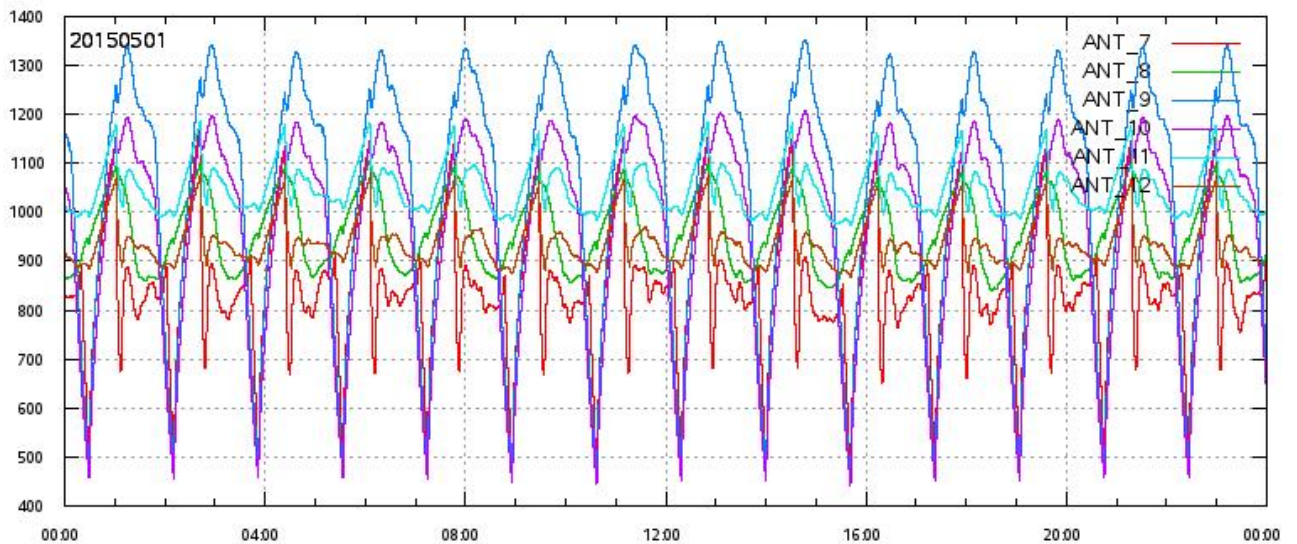
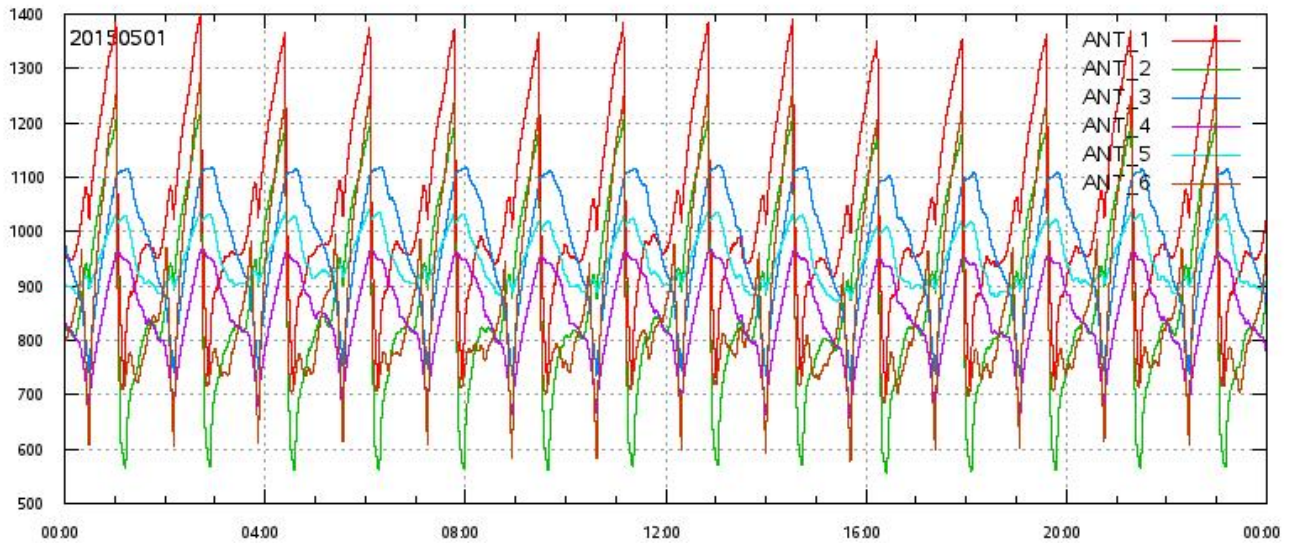
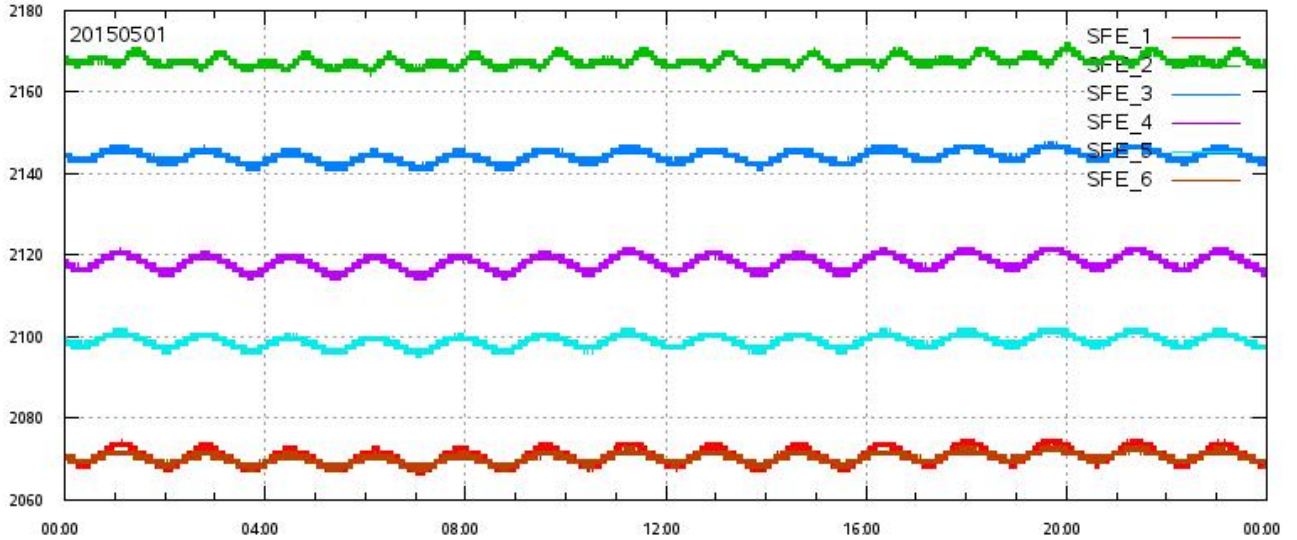
L1A Product

ECHO DATA (raw) for samples 30, 100, 150 and 200 vs. UTC_LOCALISATION



L1A Product

SFE & ANT Temperatures (raw) vs. UTC_LOCALISATION

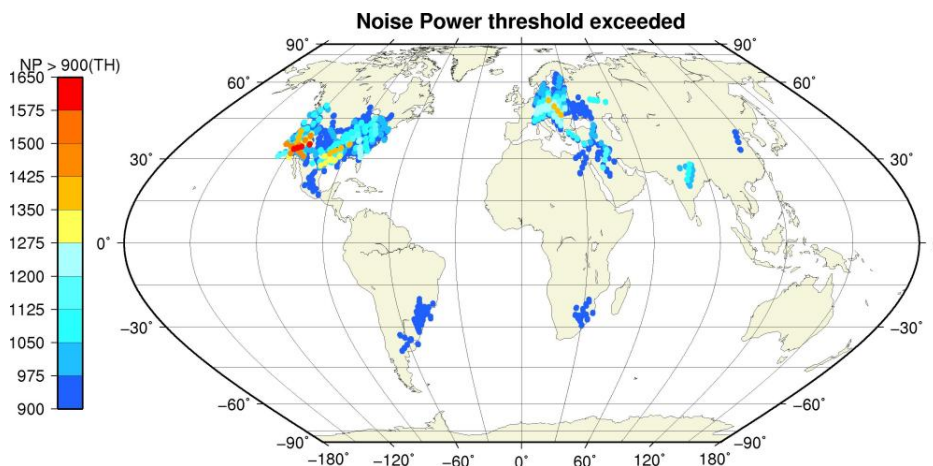
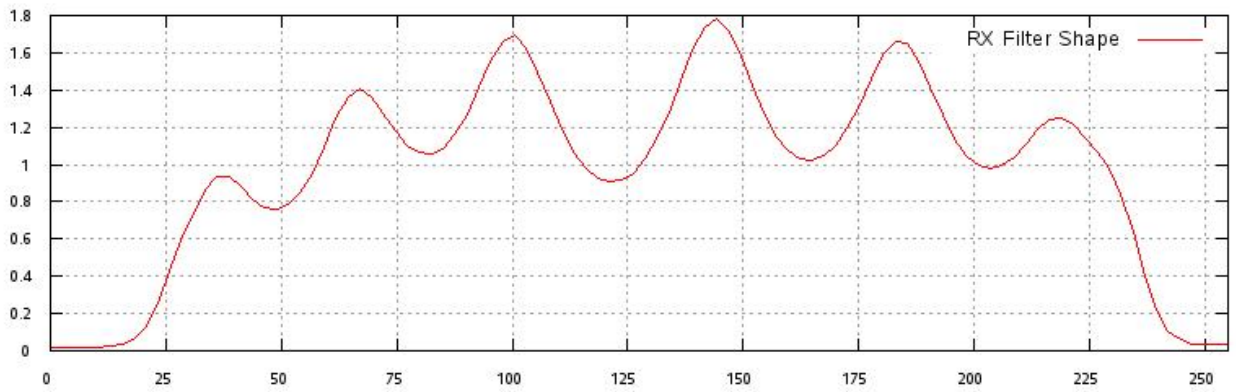
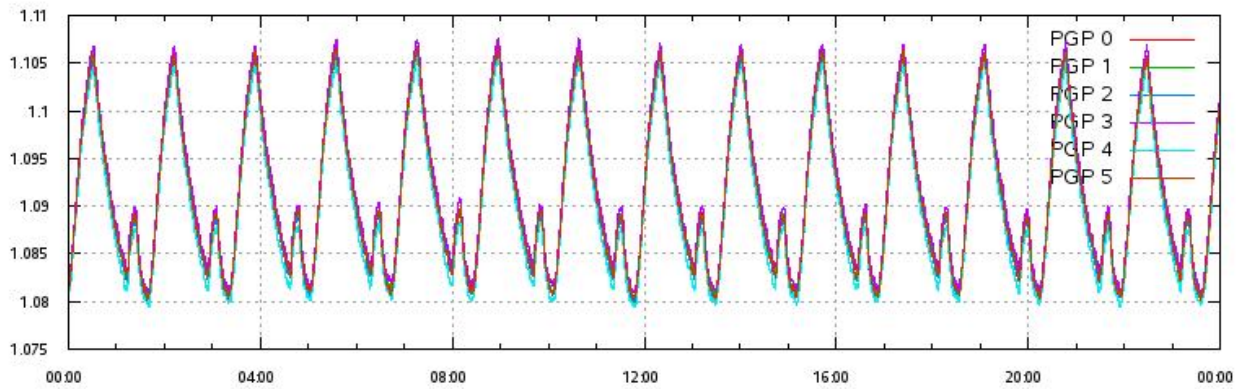
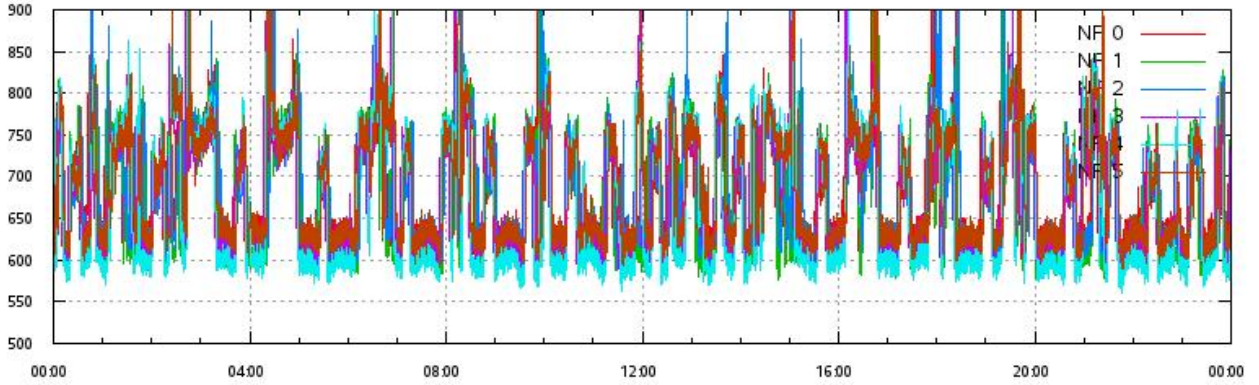


L1A Product

Noise Power & Power Gain Product per beam 0-5 vs. UTC_LOCALISATION

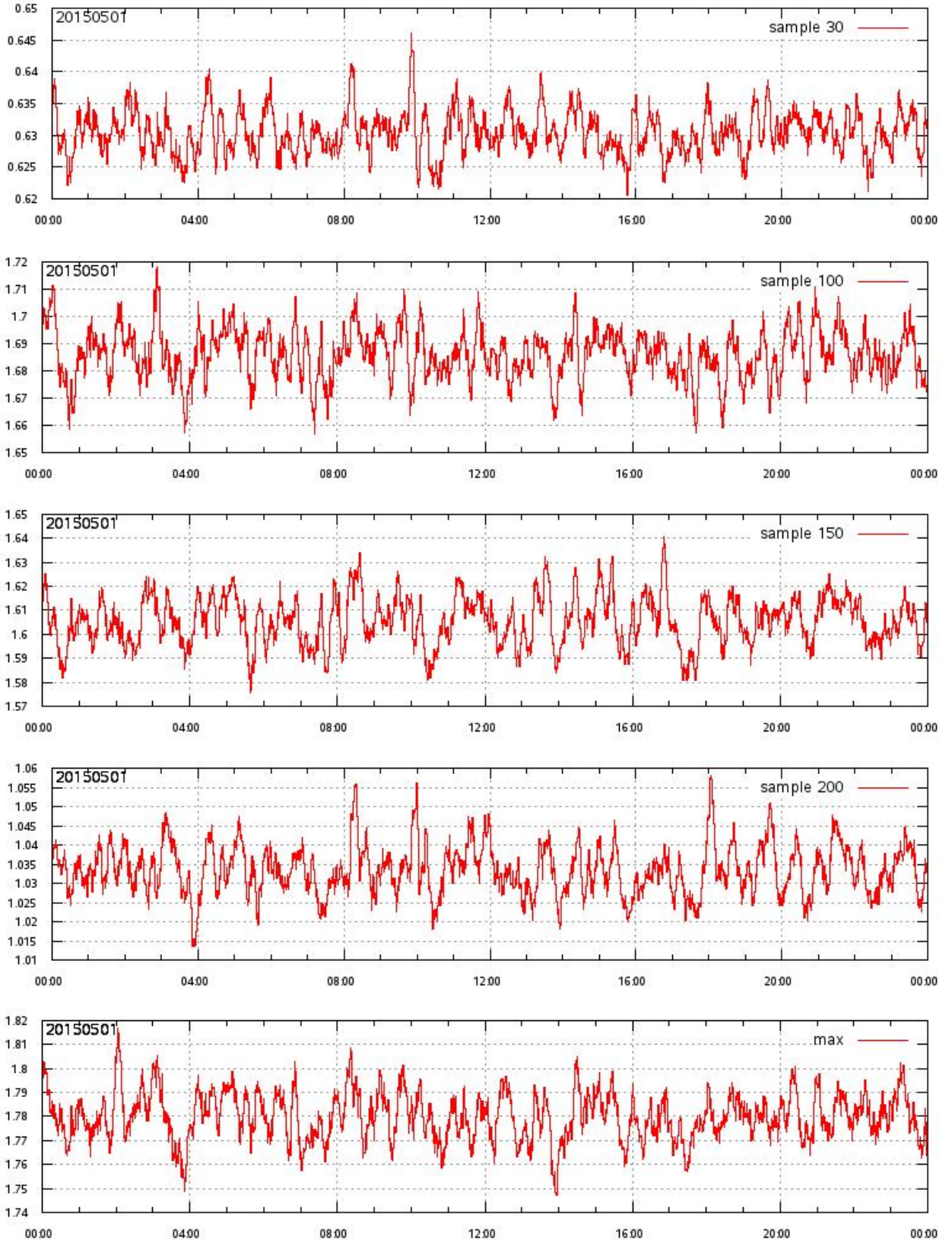
RX Filter Shape average over sample number

Noise Power threshold exceeded (TH=900) on map



L1A Product

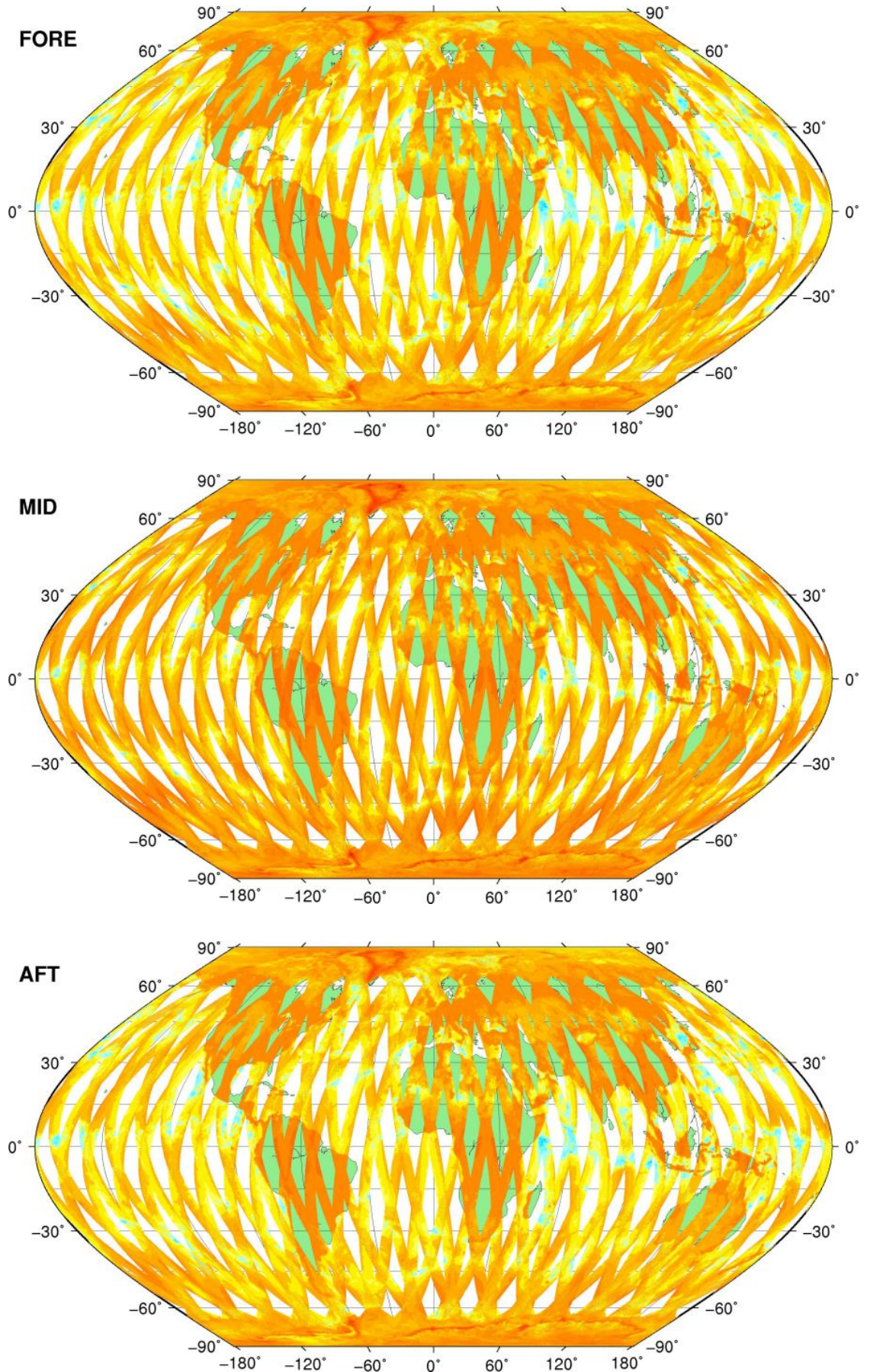
RX filter shape in detail for sample 30,100,150, 200 & max vs. UTC_LOCALISATION



SZO Product

Sigma0_TRIP Coverage map

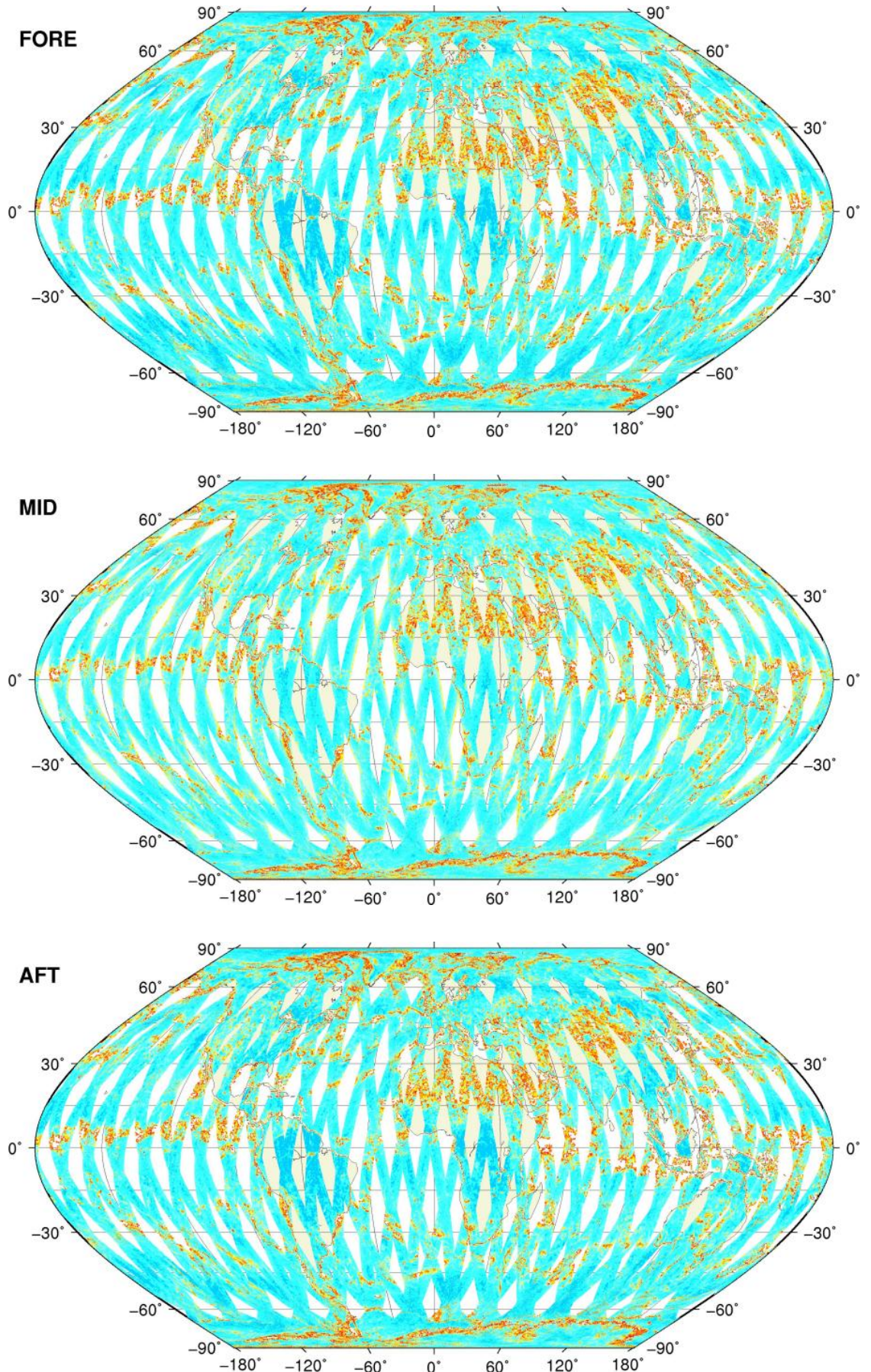
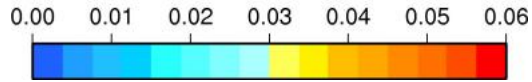
SIGMA0_TRIP Coverage



SZO Product

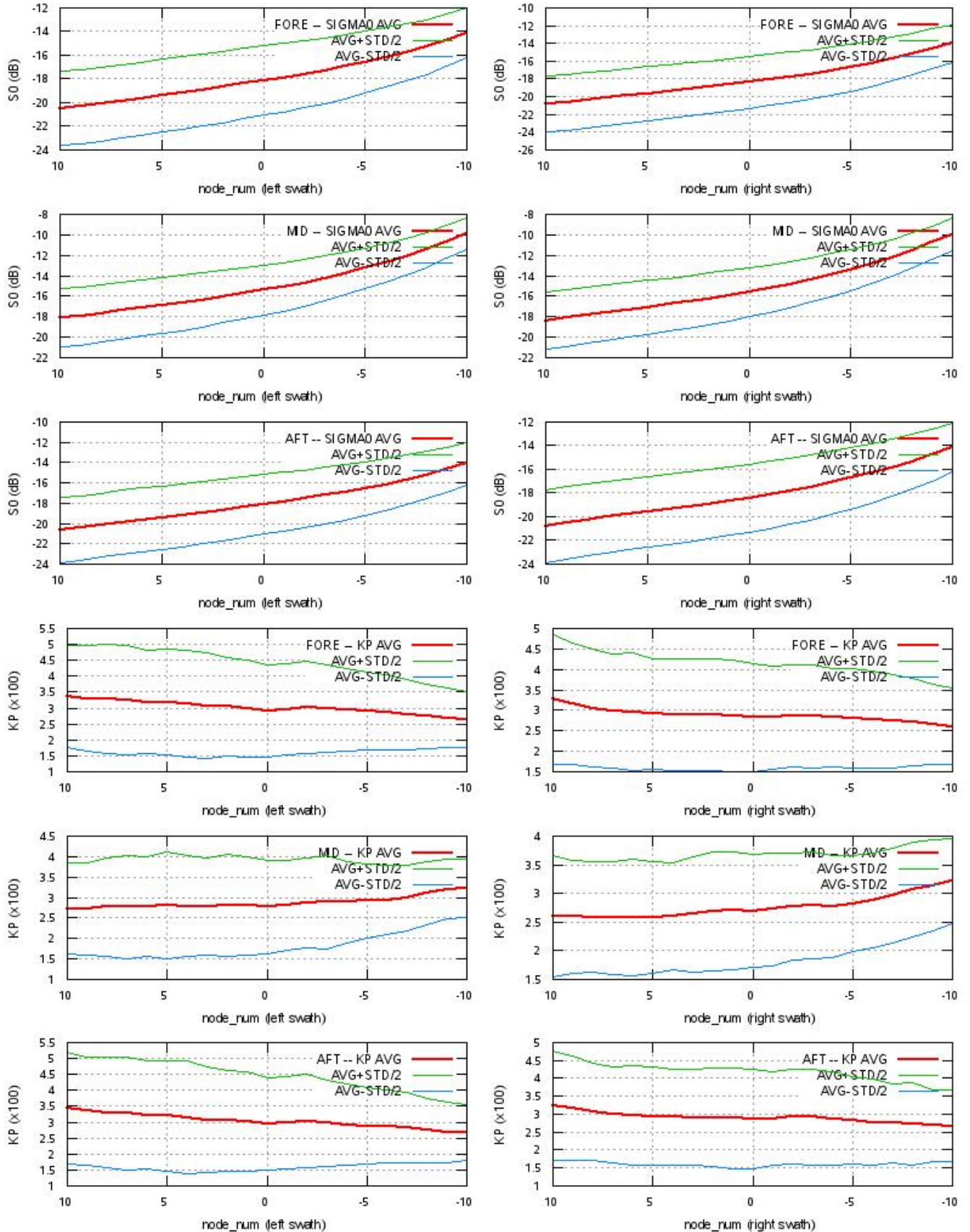
Kp Coverage map

Kp Coverage



SZO Product

S0 - Kp Statistics



SZO Product

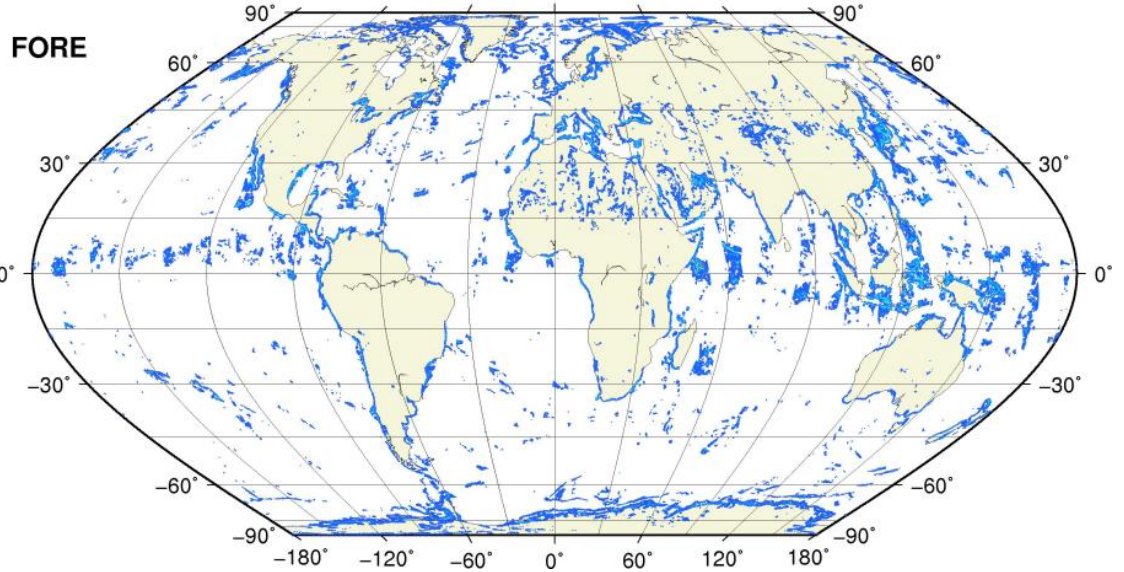
Kp Outliers on map

$0.06 < Kp < 1.0$

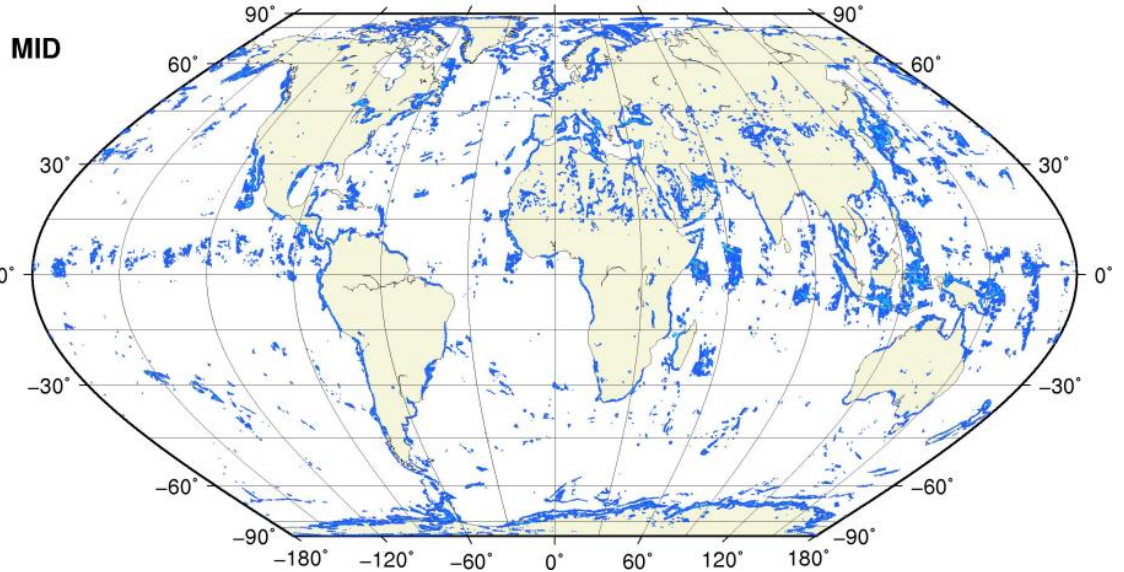
0.1 0.2 0.3 0.4 0.5 0.6 0.7 0.8 0.9 1.0



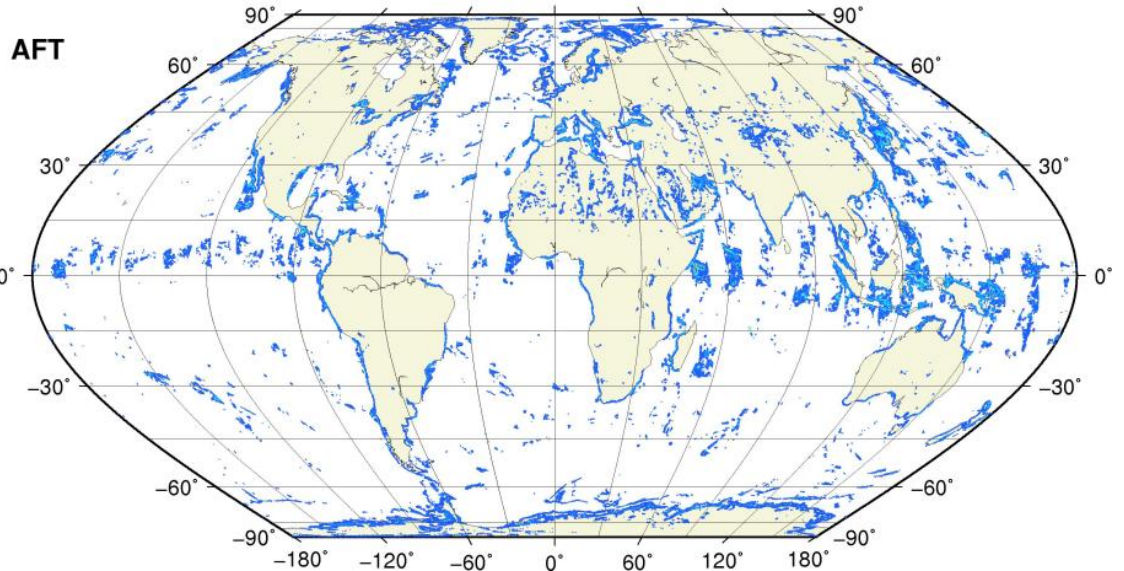
● KP = 1.0 #rec=0



● KP = 1.0 #rec=0



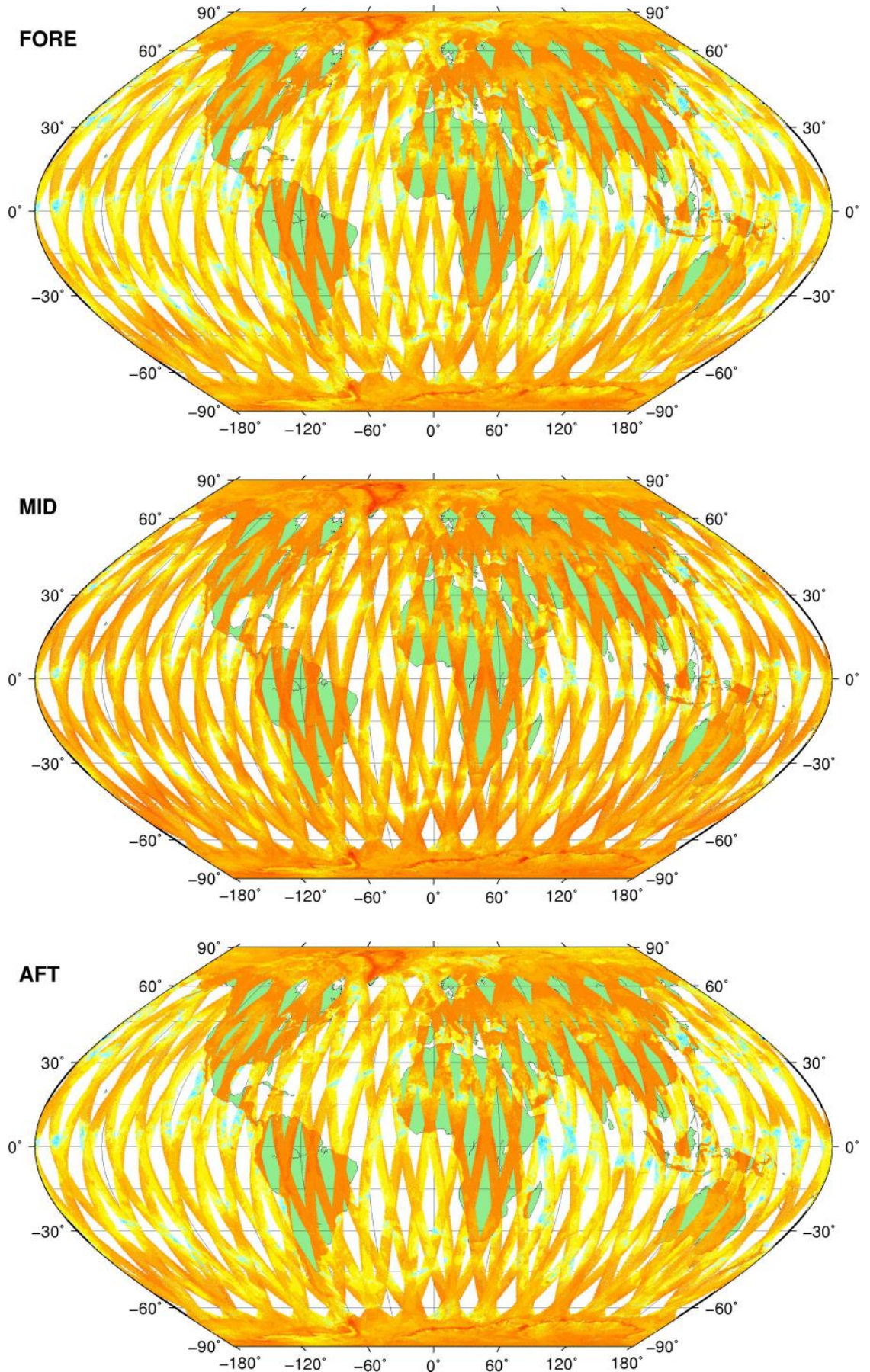
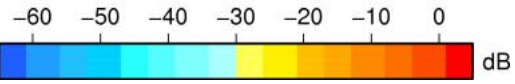
● KP = 1.0 #rec=0



SZR Product

Sigma0_TRIP Coverage map

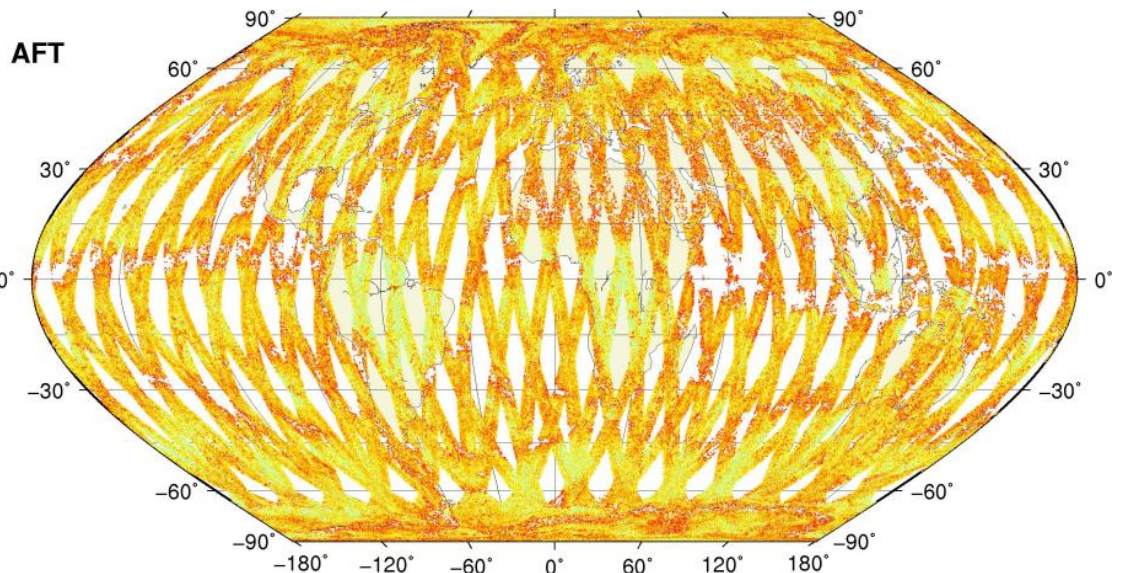
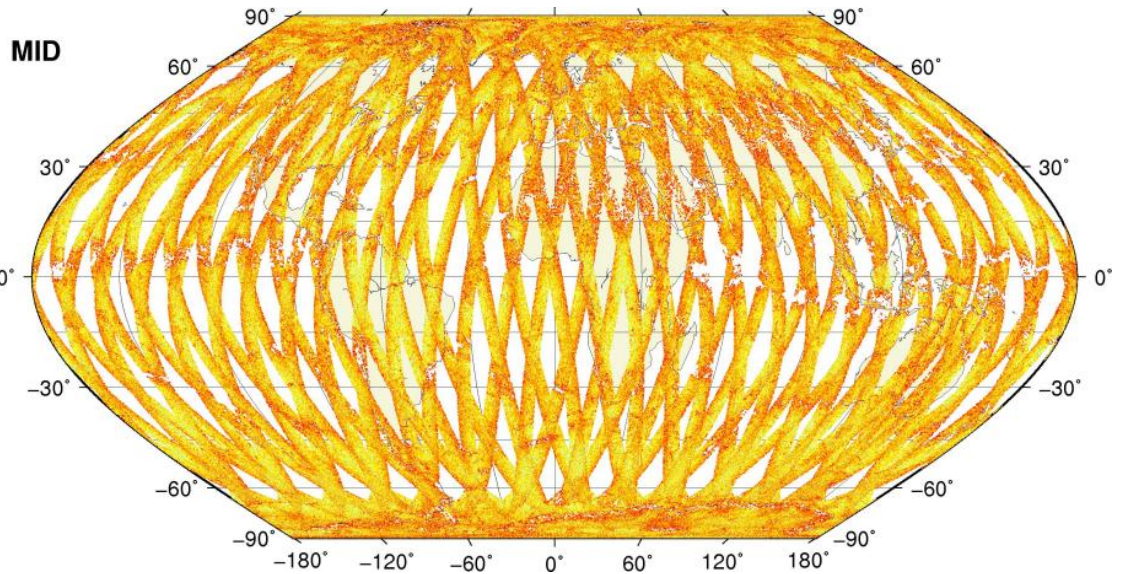
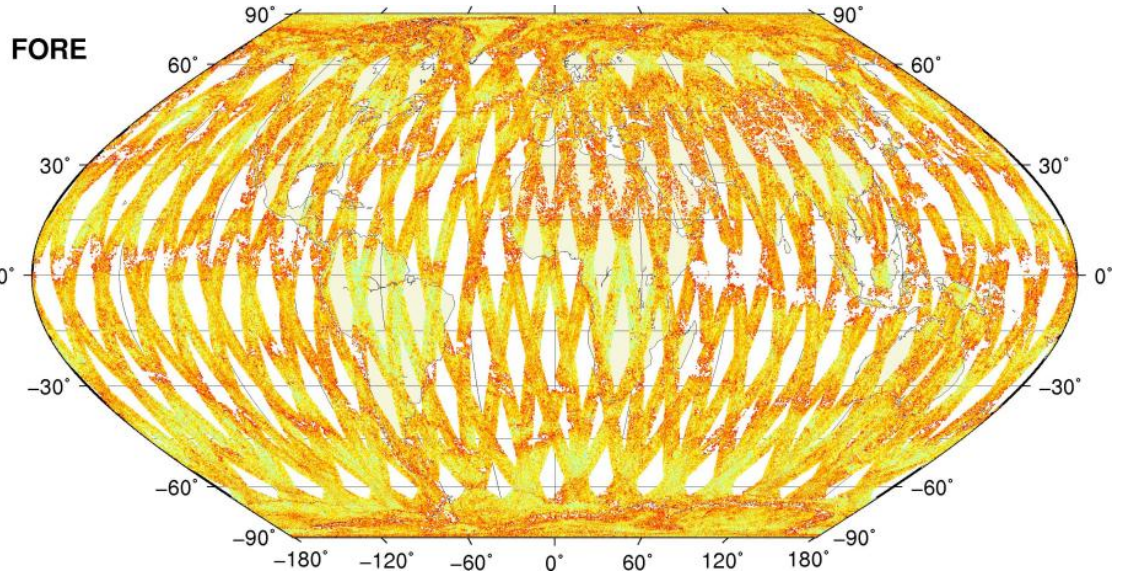
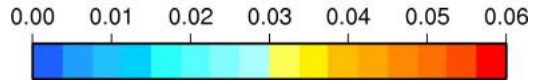
SIGMA0_TRIP Coverage



SZR Product

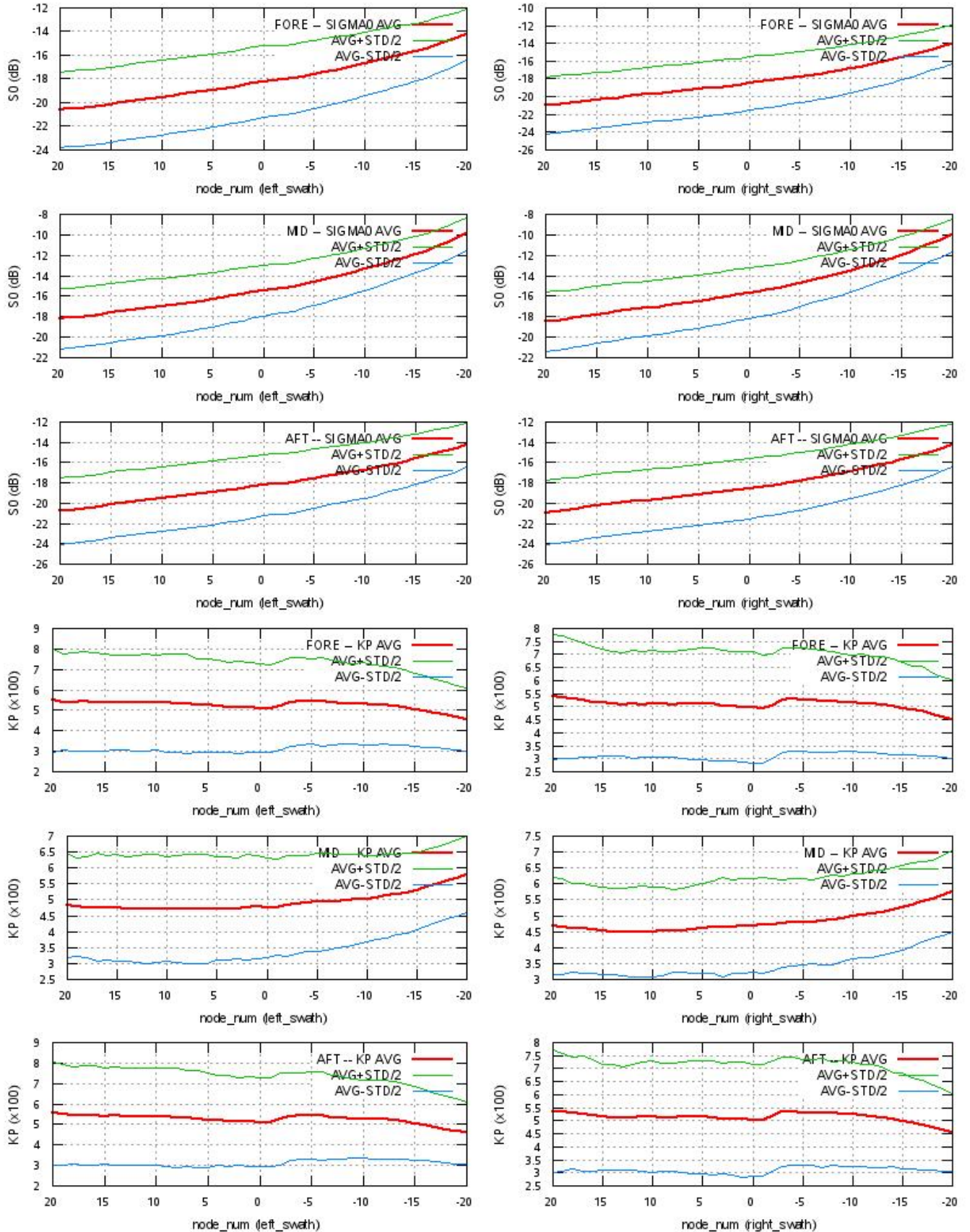
Kp Coverage map

Kp Coverage



SZR Product

S0 - Kp Statistics

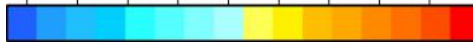


SZR Product

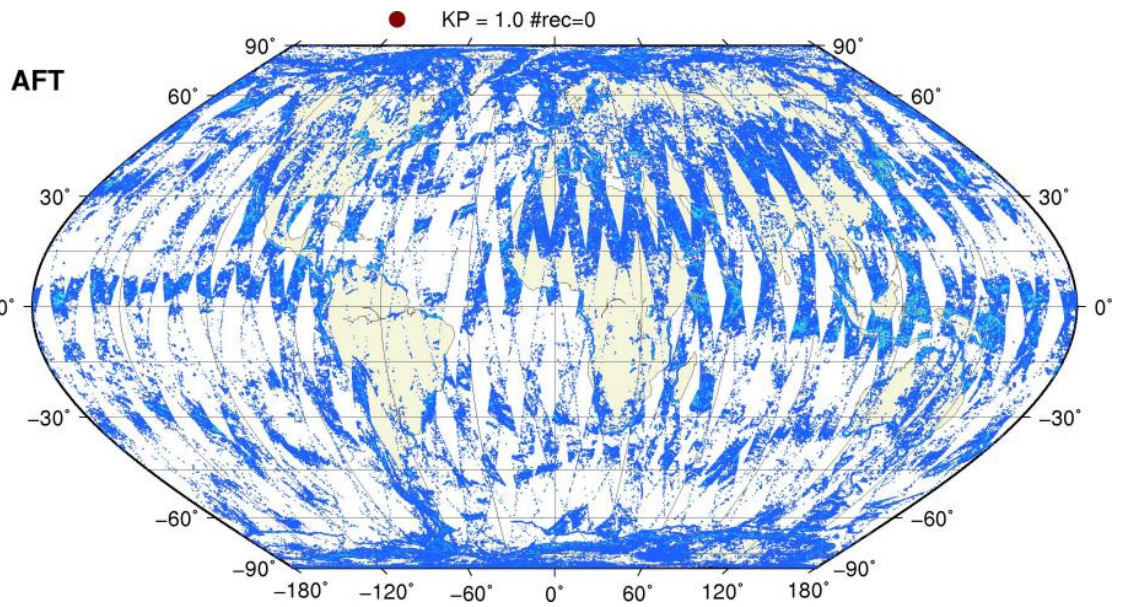
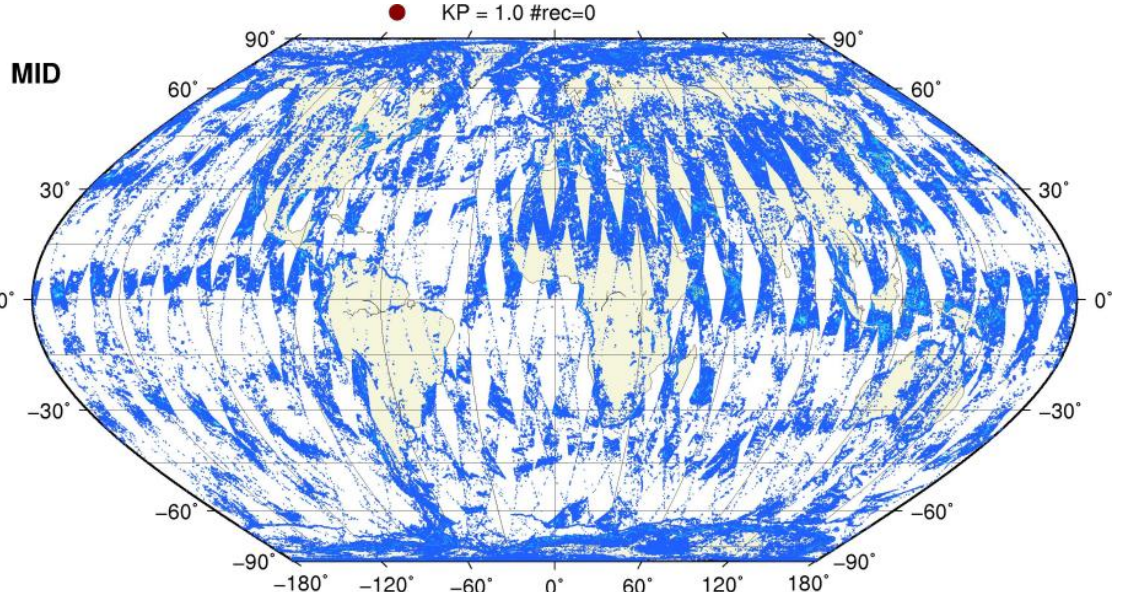
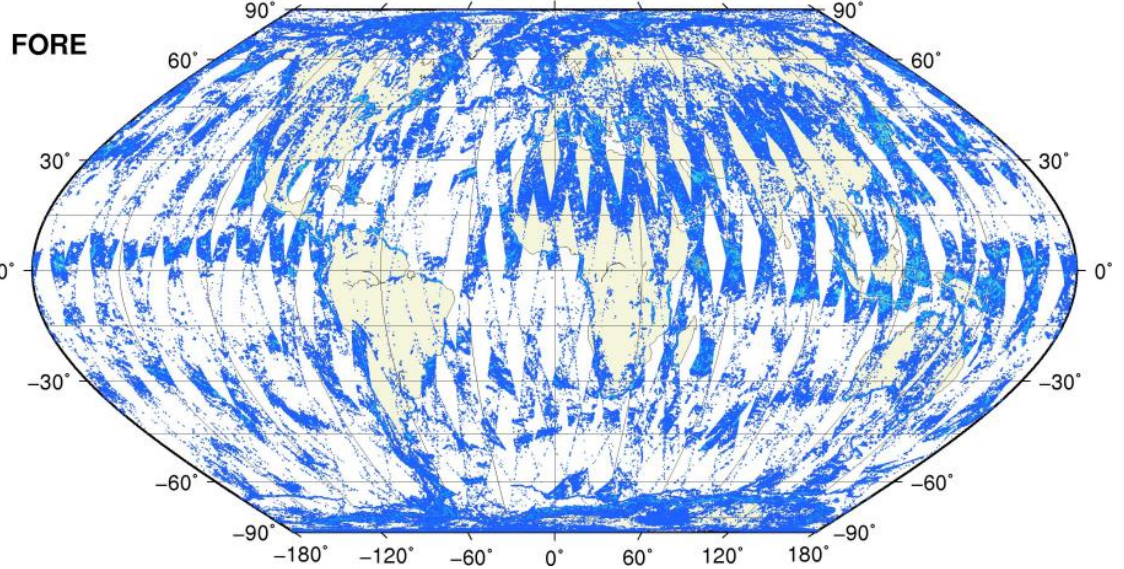
Kp Outliers on map

$0.06 < Kp < 1.0$

0.1 0.2 0.3 0.4 0.5 0.6 0.7 0.8 0.9 1.0

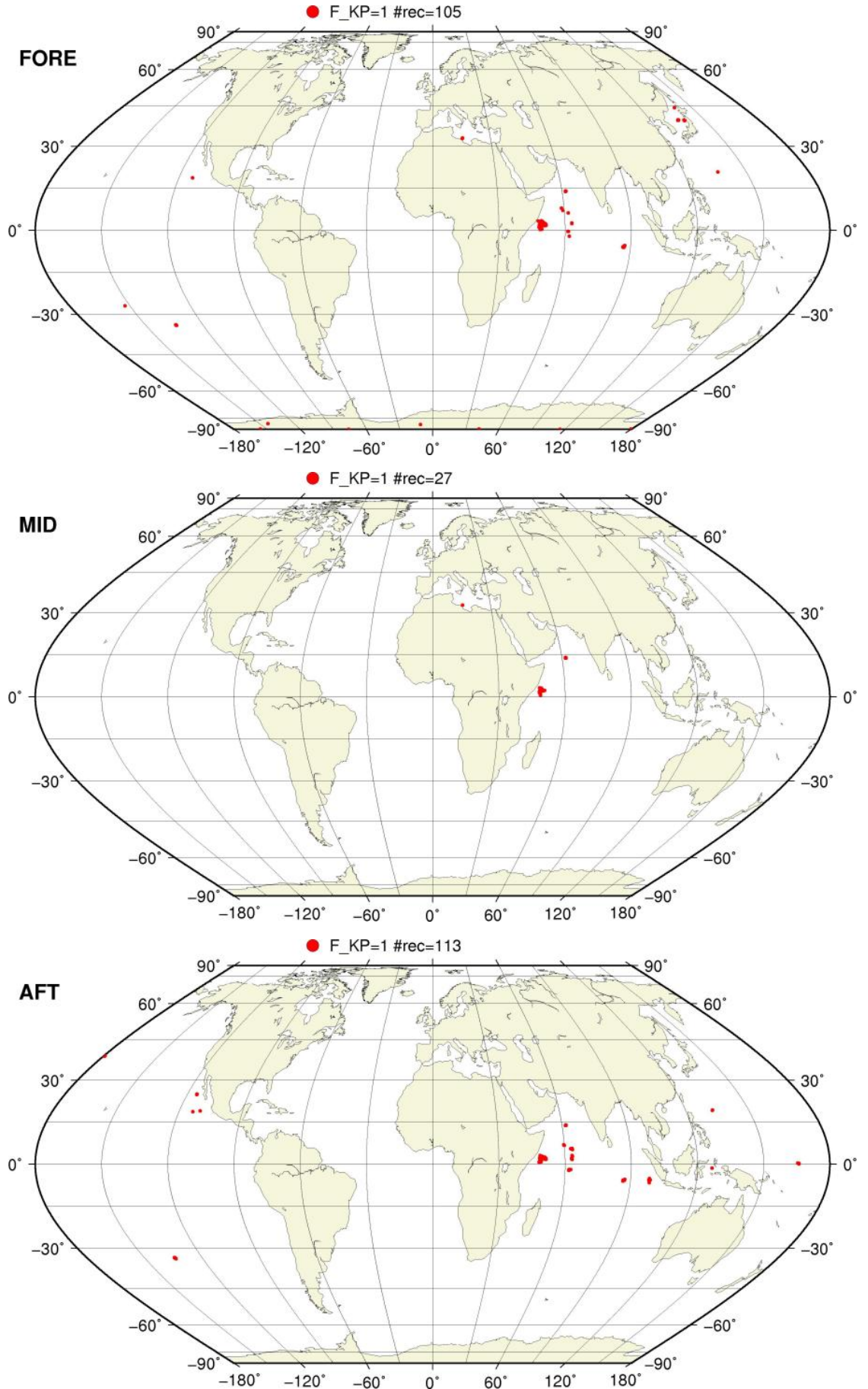


● KP = 1.0 #rec=0



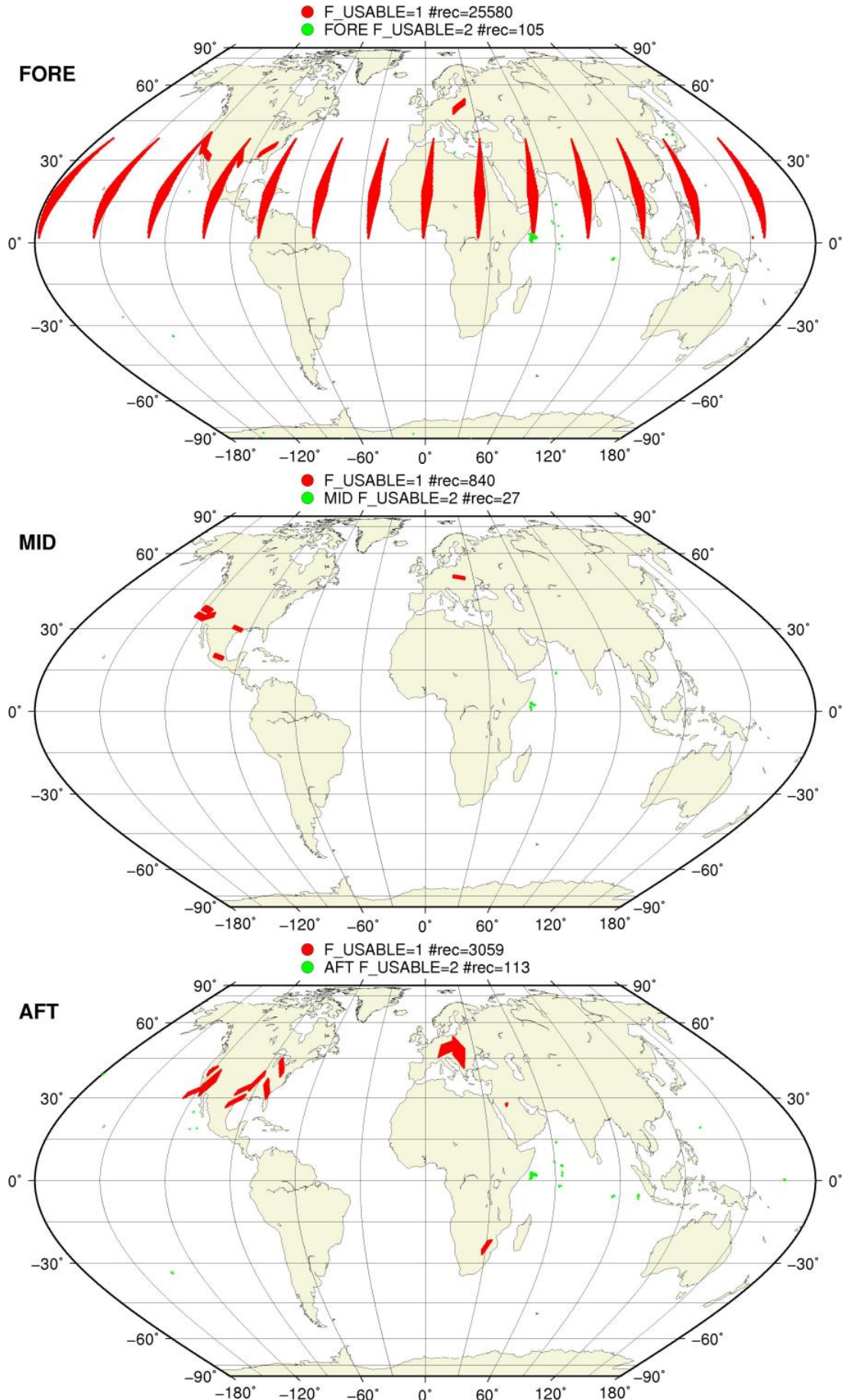
SZO Flagged Data Coverage

F_KP = 1 on map



SZO Flagged Data Coverage

F_USABLE = 1 or 2 on map



SZO Flagged Data Coverage

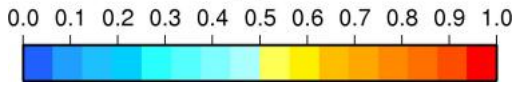
$0 < F_{OA} \leq 1$ on map



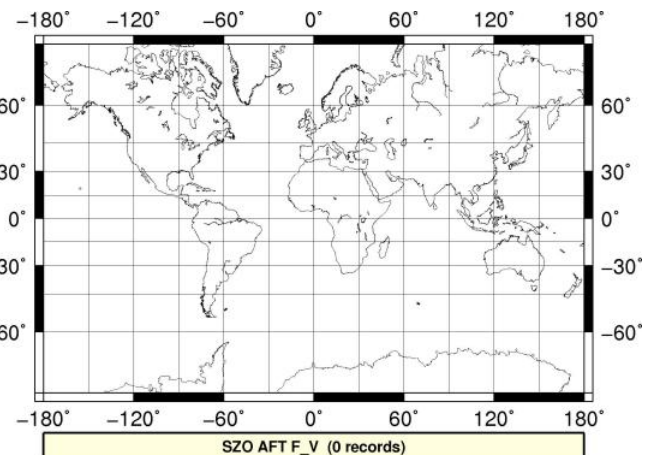
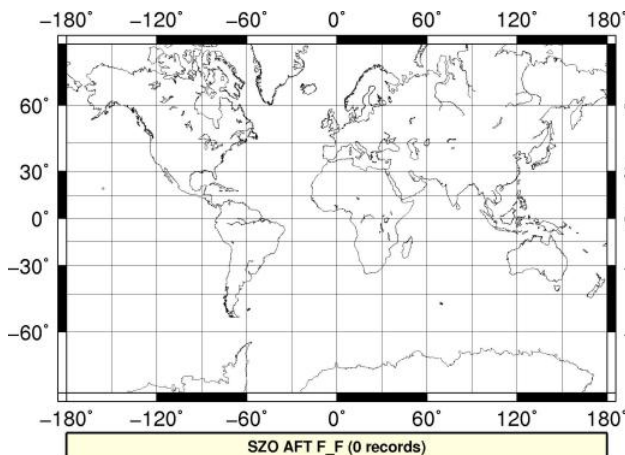
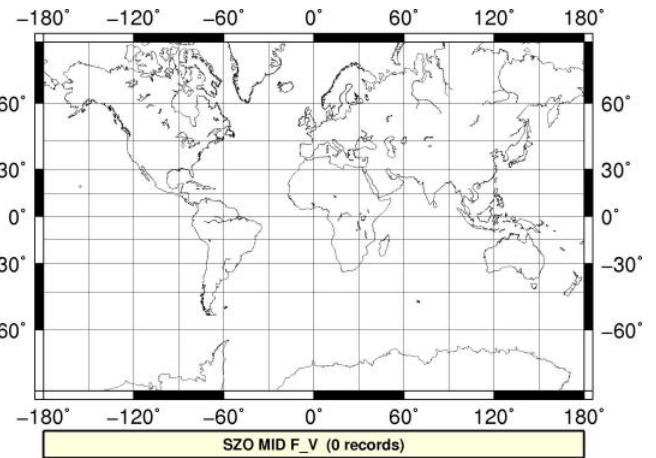
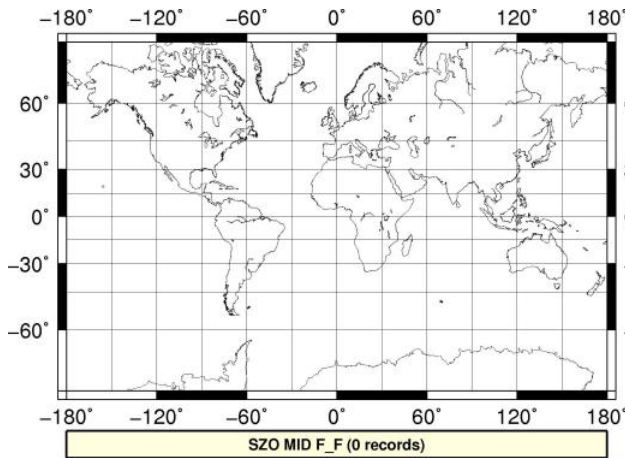
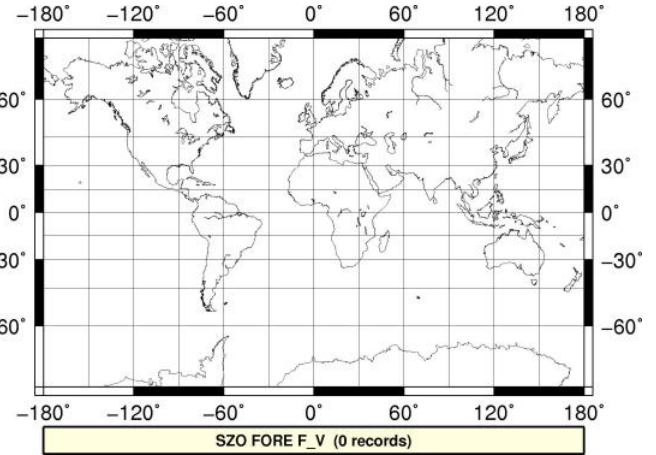
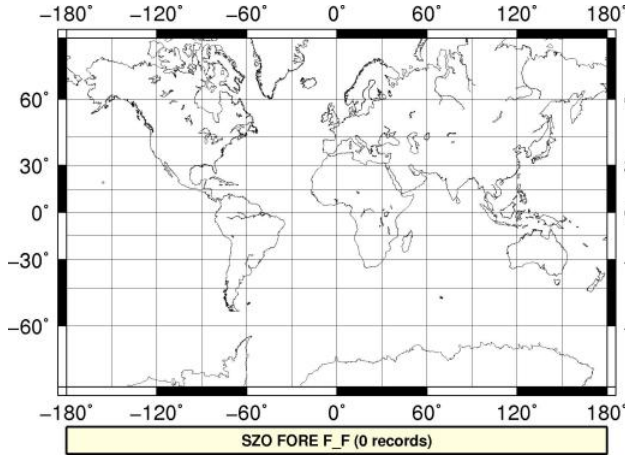
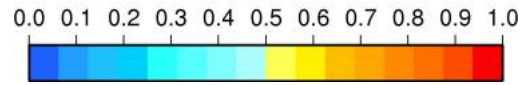
SZO Flagged Data Coverage

$0 < F_{F/V} \leq 1$ on map

$0 < F_F \leq 1$

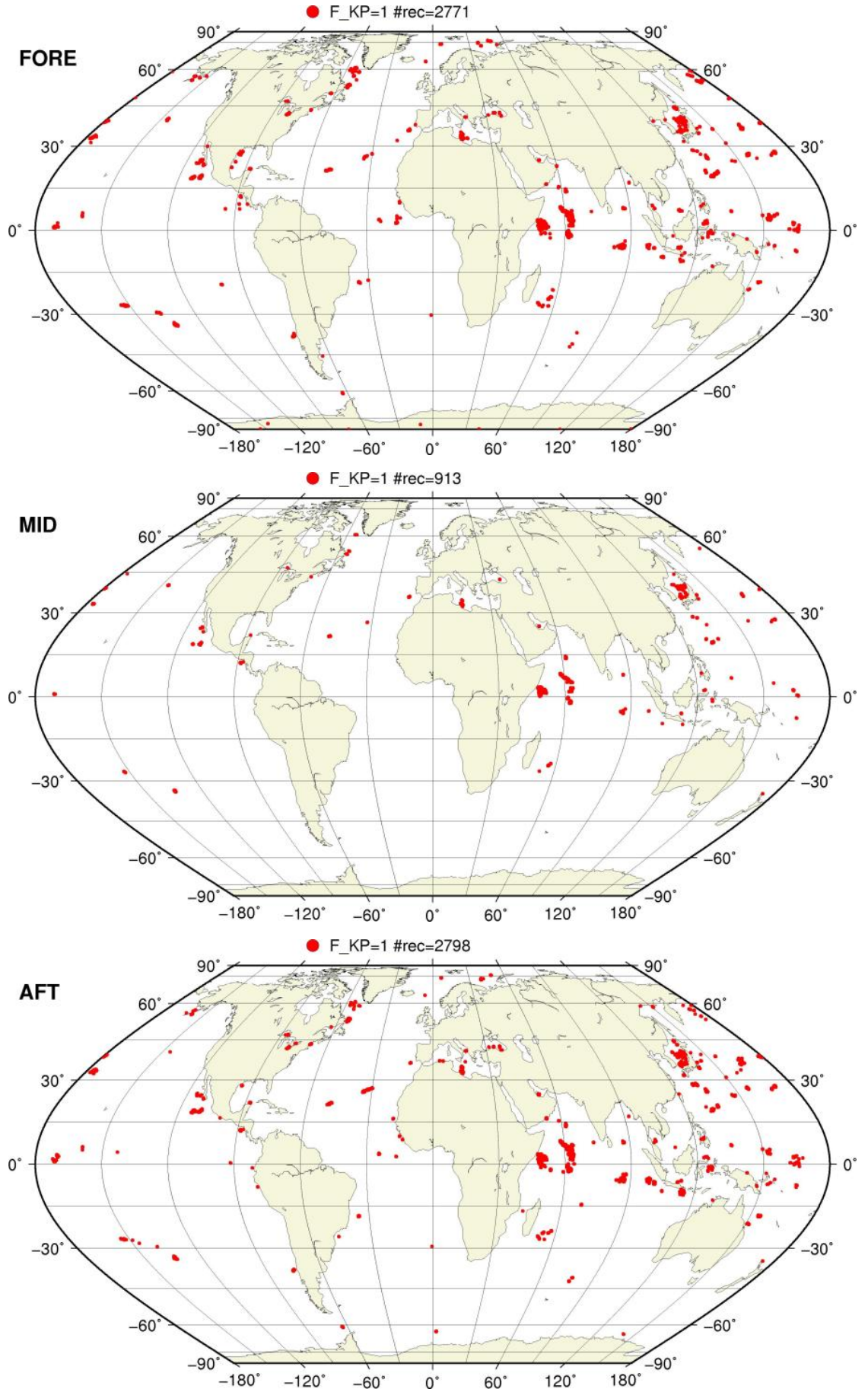


$0 < F_V \leq 1$



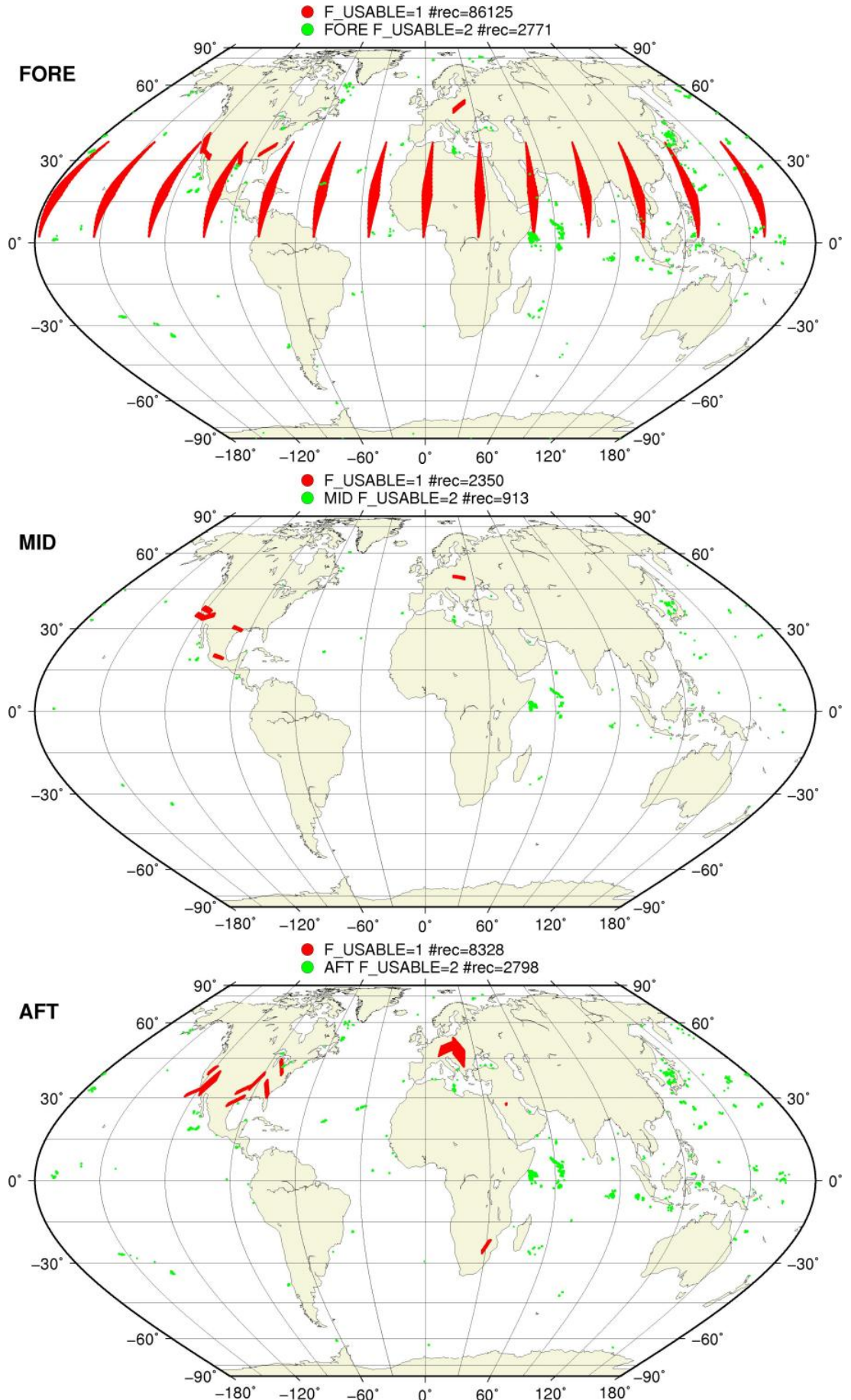
SZR Flagged Data Coverage

F_KP = 1 on map



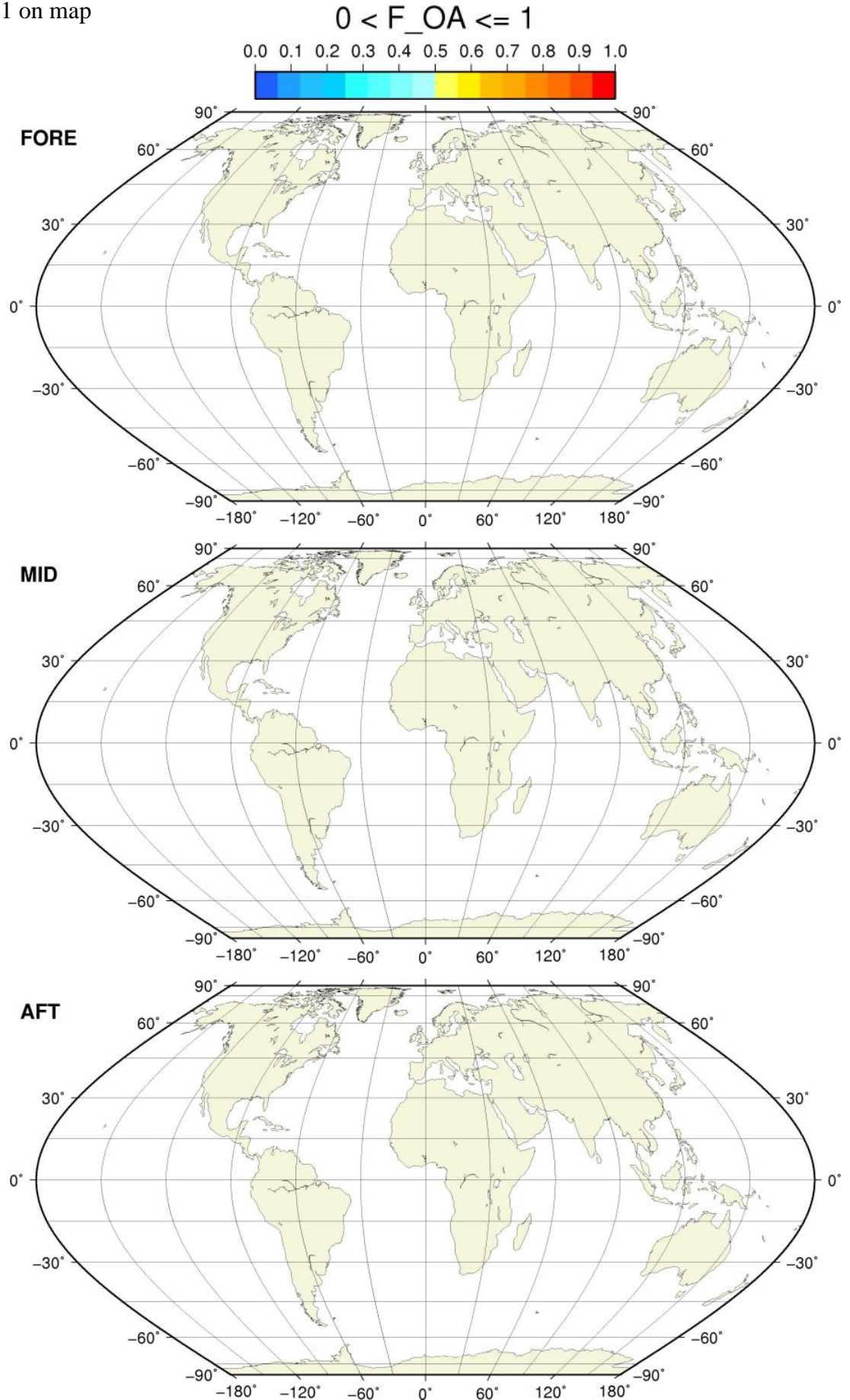
SZR Flagged Data Coverage

F_USABLE = 1 or 2 on map



SZR Flagged Data Coverage

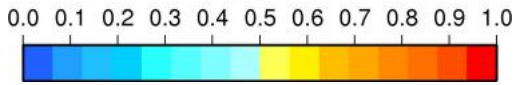
$0 < F_{OA} \leq 1$ on map



SZR Flagged Data Coverage

$0 < F_{F/V} \leq 1$ on map

$0 < F_F \leq 1$



$0 < F_V \leq 1$

