

# IASI L0 and L1 Daily Monitoring Report **Metop-C**

IASI monitoring team

17/07/2020 00:00:00 - 18/07/2020 00:00:00

## 1 Introduction

This report provides summary monitoring plots and figures from IASI instrument on the Metop-C satellite retrieved from the IASI L0 and L1 ENG product (3 minutes data packet) for 17/07/2020 00:00:00 - 18/07/2020 00:00:00 .

The monitoring data are extracted on PDU basis.

## 2 Data quantity 17/07/2020 00:00:00 - 18/07/2020 00:00:00

Product Type	Number	Action
L0 HKTU PDUs	461	-
L0 IASI PDUs	461	-
L1 ENG PDUs	459	e
L1 ENG distinct GEPSGranule	459	a
L1 DPX PDUs (RM: IASI-HIRS)	0	e
L1 DPS Files (RM: OBS-CAL NWP based)	459	-

Table 1: Data quantity

APID	Seq from	Seq to	Time from	Time to
PX1 (130)	2533	694	20200717043719.425	20200717054158.353
PX2 (135)	2533	694	20200717043719.425	20200717054158.353
PX3 (140)	2533	693	20200717043719.425	20200717054158.138
PX4 (145)	2532	693	20200717043719.210	20200717054158.138
IMG (150)	6036	6137	20200717043719.210	20200717054158.138
VER (160)	8489	10915	20200717043713.804	20200717054201.814
VER (160)	16379	0	20200717080737.806	20200717080745.806
VER (160)	0	16380	20200717080745.806	20200717080745.806
VER (160)	-1	1	20200717080745.806	20200717080753.806
VER (160)	16380	0	20200717152433.749	20200717152441.749
VER (160)	1	16381	20200717152441.749	20200717152441.749
VER (160)	-1	2	20200717152441.749	20200717152449.749
VER (160)	16381	0	20200717224129.726	20200717224137.726
VER (160)	2	16382	20200717224137.726	20200717224137.726
VER (160)	-1	3	20200717224137.726	20200717224145.726
AUX (180)	4971	5457	20200717043714.238	20200717054202.248

Table 2: L0 data gaps



### 3 Instrument modes

Time	Transition from	Transition to
17/07/2020 00:00:13	-	Normal operation

Table 3: Instrument modes

### 4 L0 and L1 Data Quality

Flag	Value	Action
L0 IASI PDUs	461	-
L1 ENG PDUs	459	e
L1 ENG distinct GEPSGranule	459	a
GQisFlagQual set (PX1)	99.45 %	-
GQisFlagQual set (PX2)	99.48 %	-
GQisFlagQual set (PX3)	99.48 %	-
GQisFlagQual set (PX4)	99.40 %	-
GQisFlagQual set (all)	99.46 %	-

Table 4: Quality flags

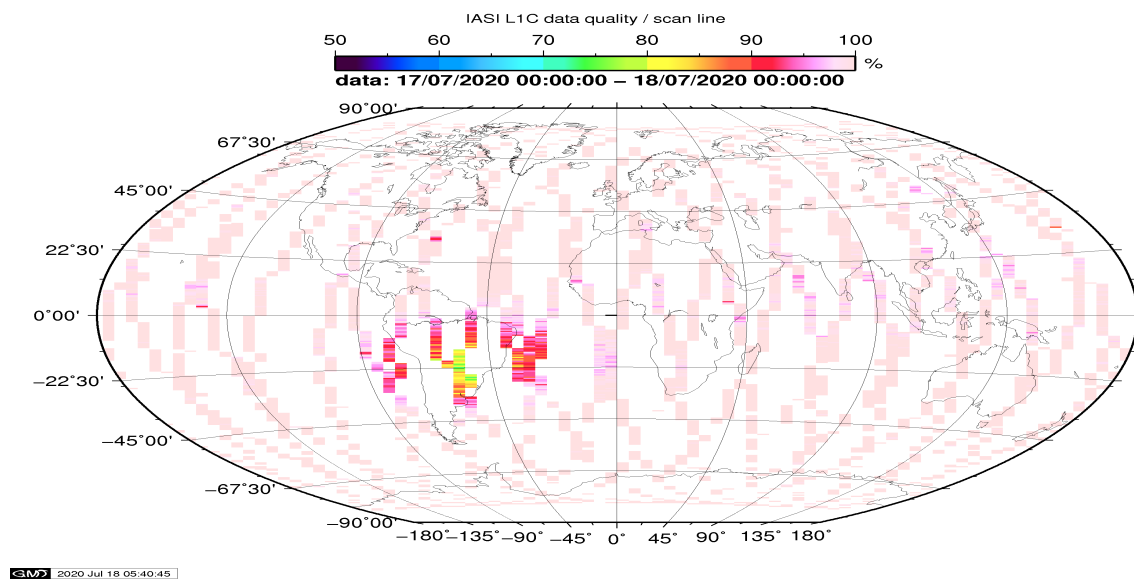


Figure 1: L1C data quality

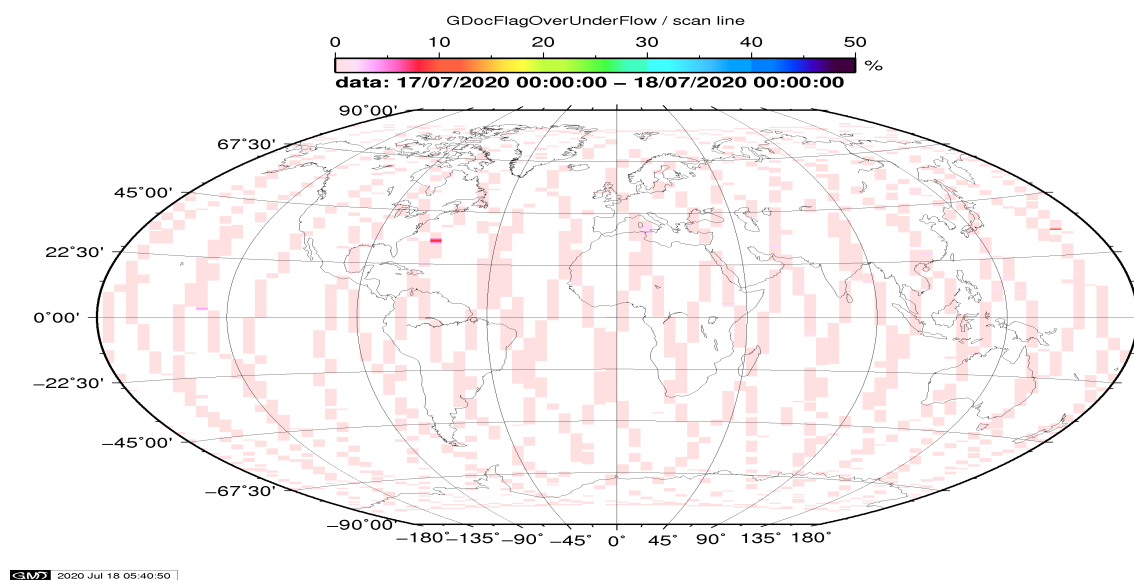


Figure 2: Flag of Over and Under Flows

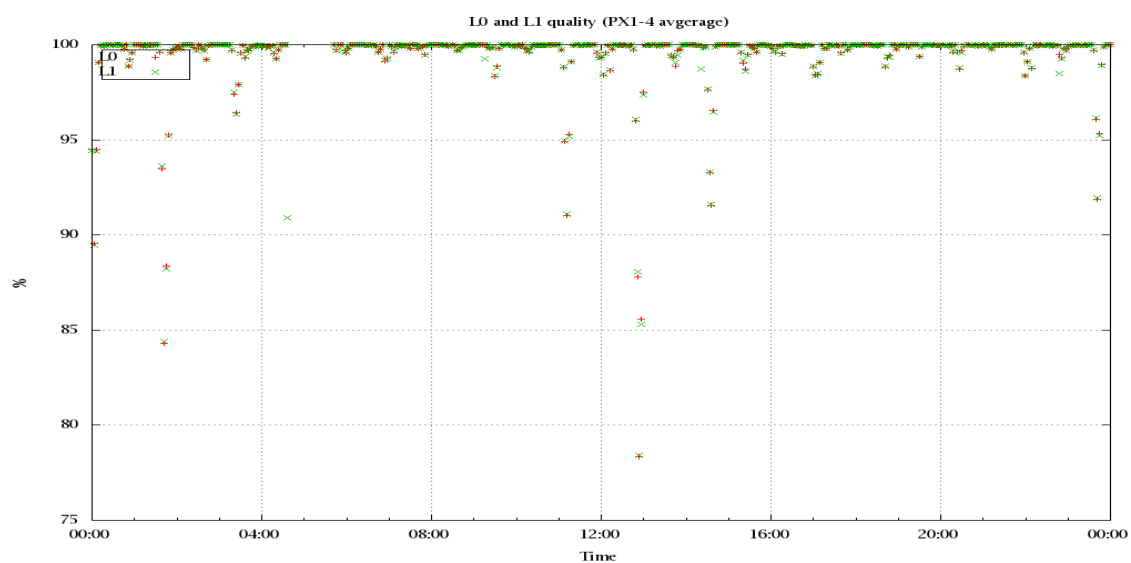


Figure 3: Level 0 and 1C overall quality

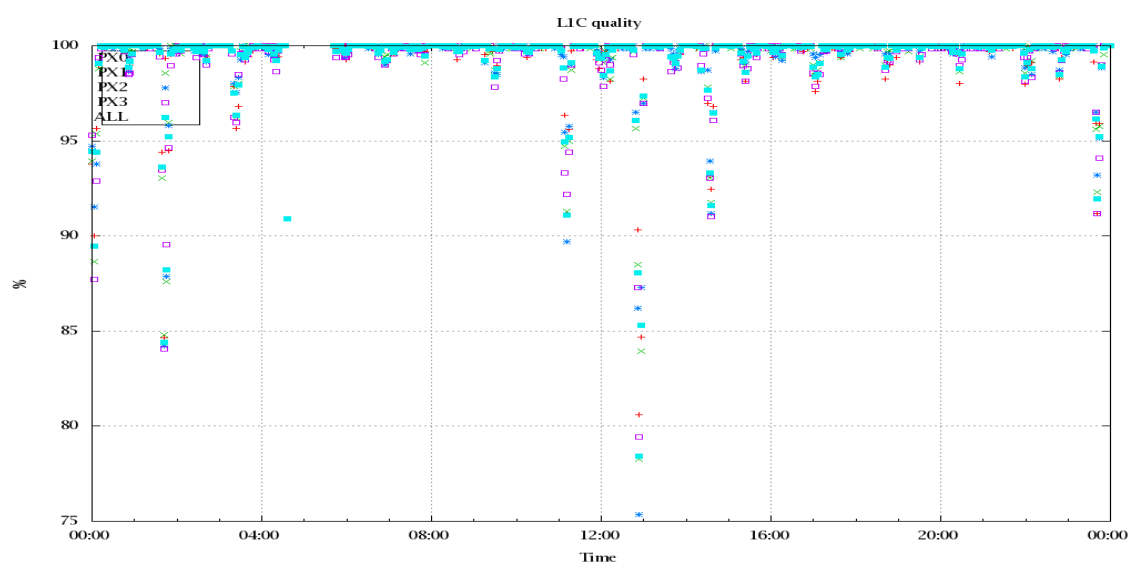


Figure 4: Level 1C quality

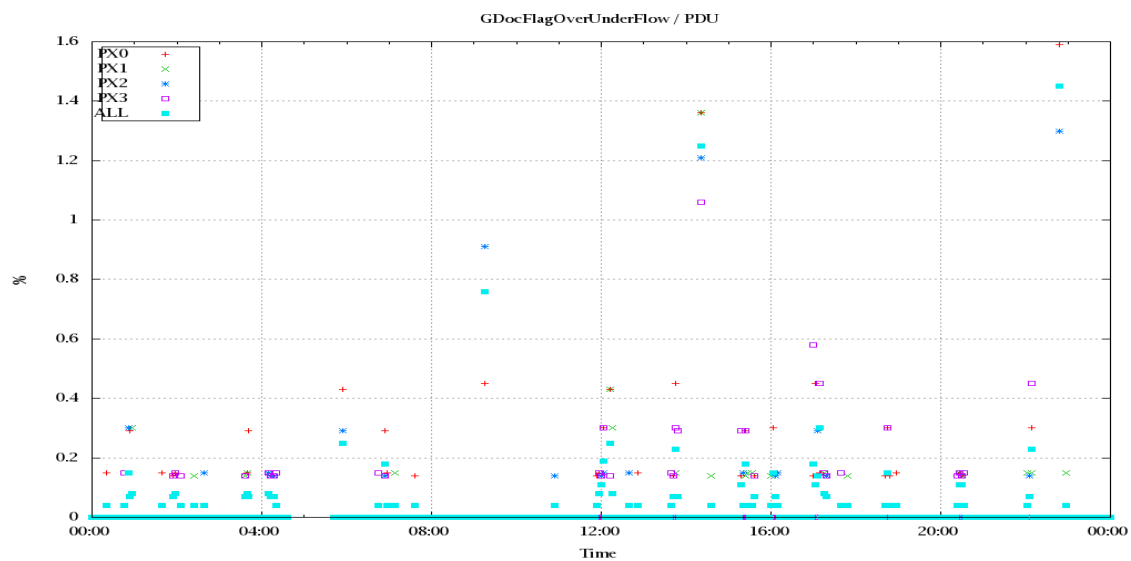


Figure 5: Timeseries of flag of Over and Under Flows

## 5 Radiance monitoring based on NWP

The radiance monitoring compares the IASI measurements (L1C-eps-products) obtained under clear sky situation over sea with modeled radiances. Cloud identification is based on cloud flag of co-located AVHRR L1B data in addition to information from the IASI L1C clustering analysis here only homogenous situations are taken into account (99.0 percent in first class).

A radiative transfer model (RTM) is feed with co-located ECMWF profiles of T, water vapor and Ozone. Between March 2007 and the 18th of May 2010 RTIASI in Version 4.0 is used. After that date the RTTOV model in V9.3 is used.

Information about the SST is obtained from the AVHRR L1B or taken from AVHRR scenes analysis (CGS only). In the following figures 28 to 34, the so-called radiance anomaly is shown. The radiance anomaly is defined as the difference between the quarter daily radiance average OBS-CAL (over all pixels and scan positions 10 to 20) and the average bias OBS-CAL (over all pixels and scan positions 10 to 20) of the last 30 days.

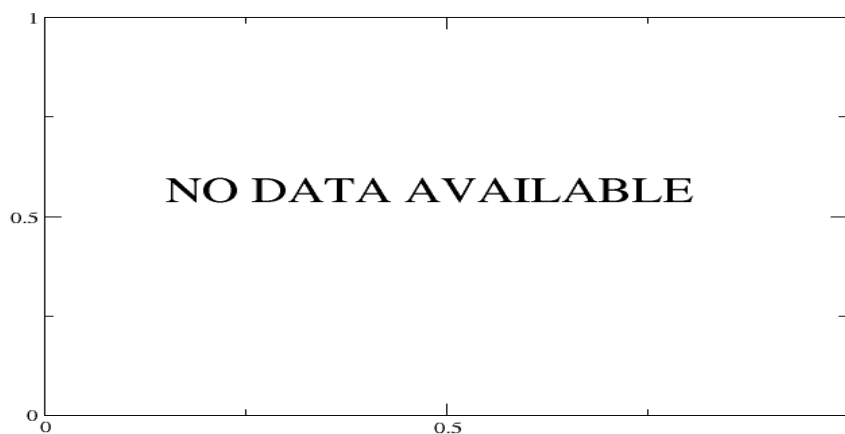


Figure 6: Average Radiance differences: OBS-CAL

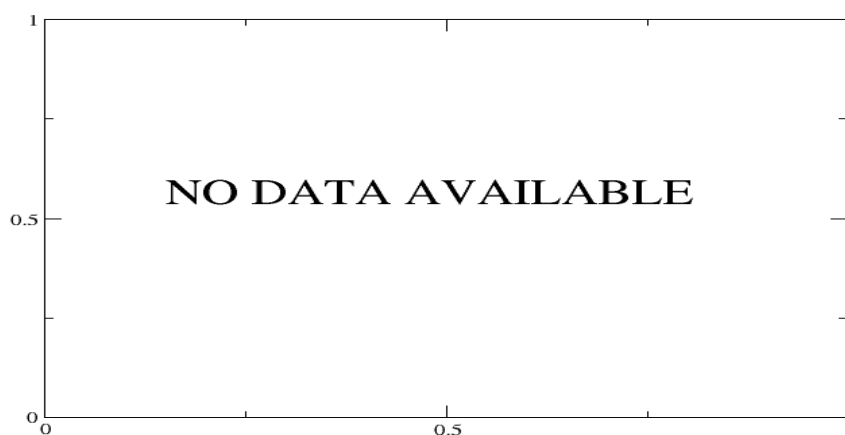


Figure 7: Standard Deviation of Radiance differences

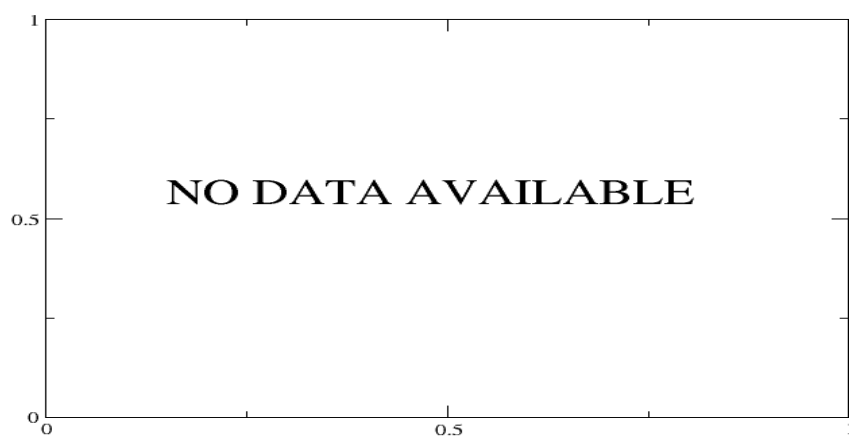


Figure 8: Average Radiance differences: OBS-CAL

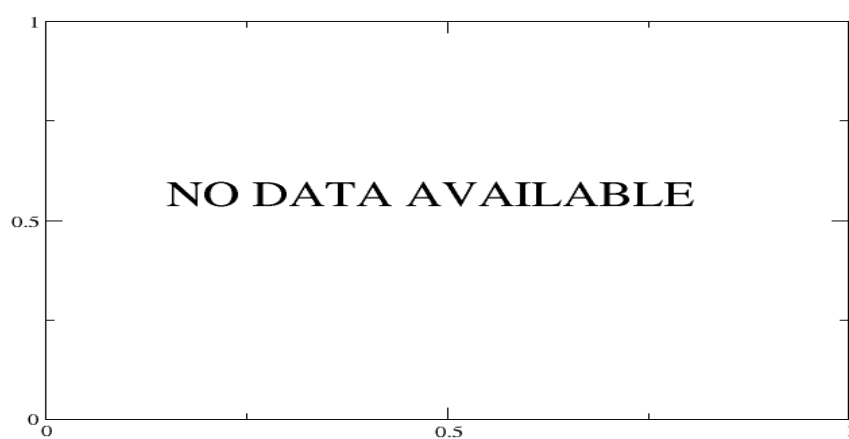


Figure 9: Standard Deviation of Radiance differences



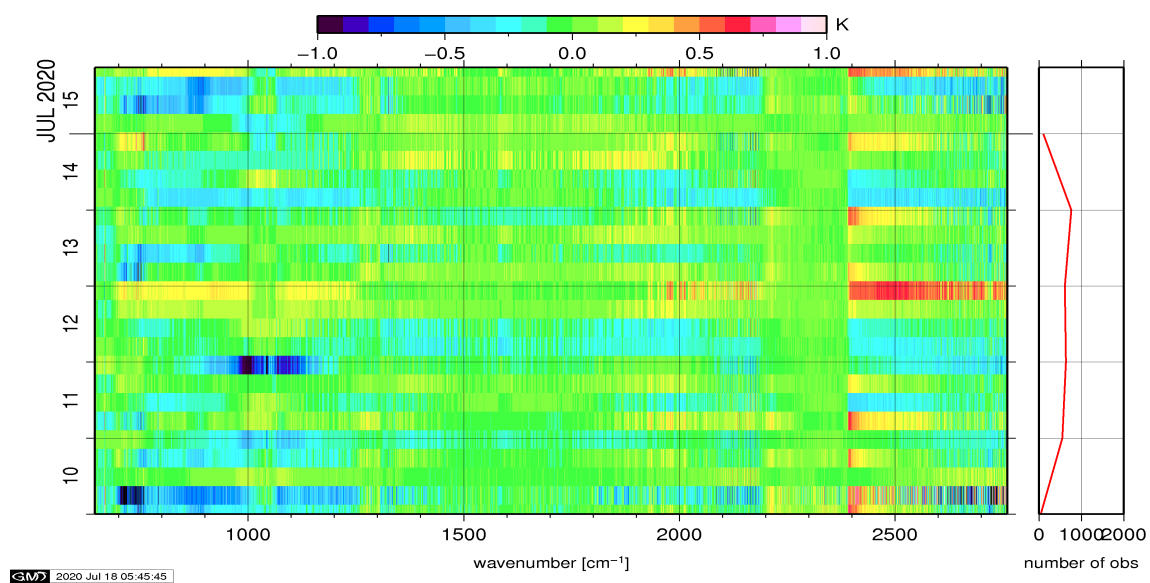


Figure 10: Radiance Anomaly in BT: All Channels

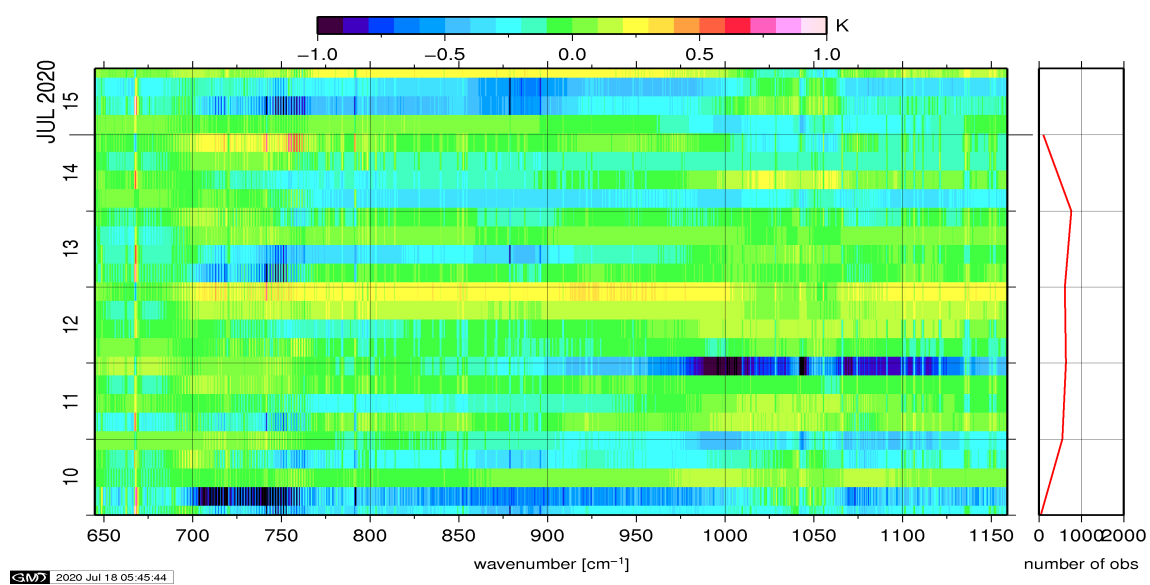


Figure 11: Radiance Anomaly in BT: IASI Band 1

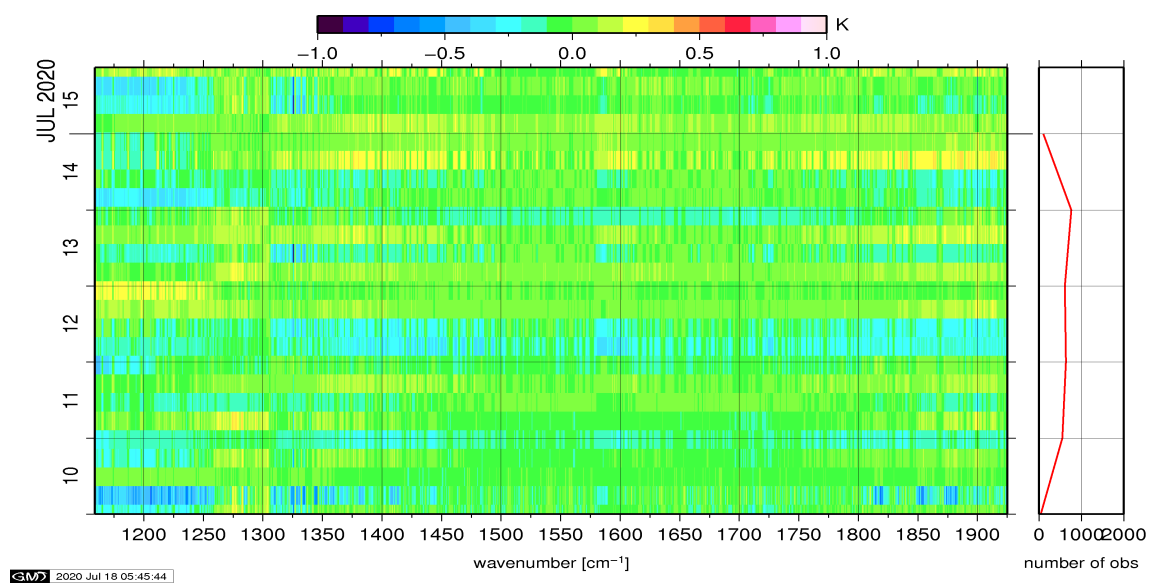


Figure 12: Radiance Anomaly in BT: IASI Band 2

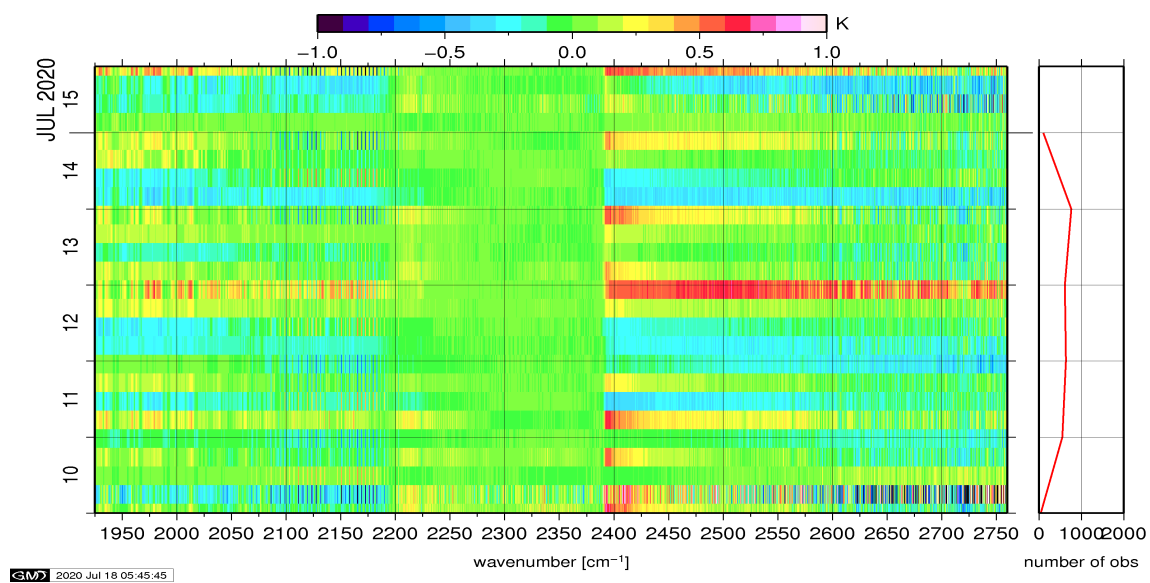


Figure 13: Radiance Anomaly in BT: IASI Band 3

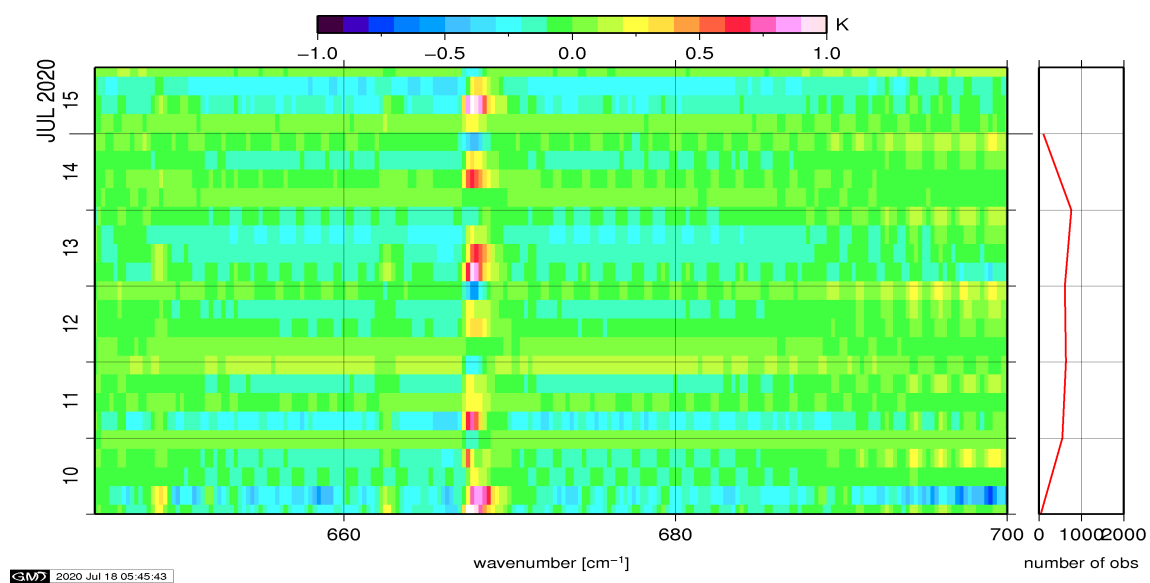


Figure 14: Radiance Anomaly in BT: CO2 14

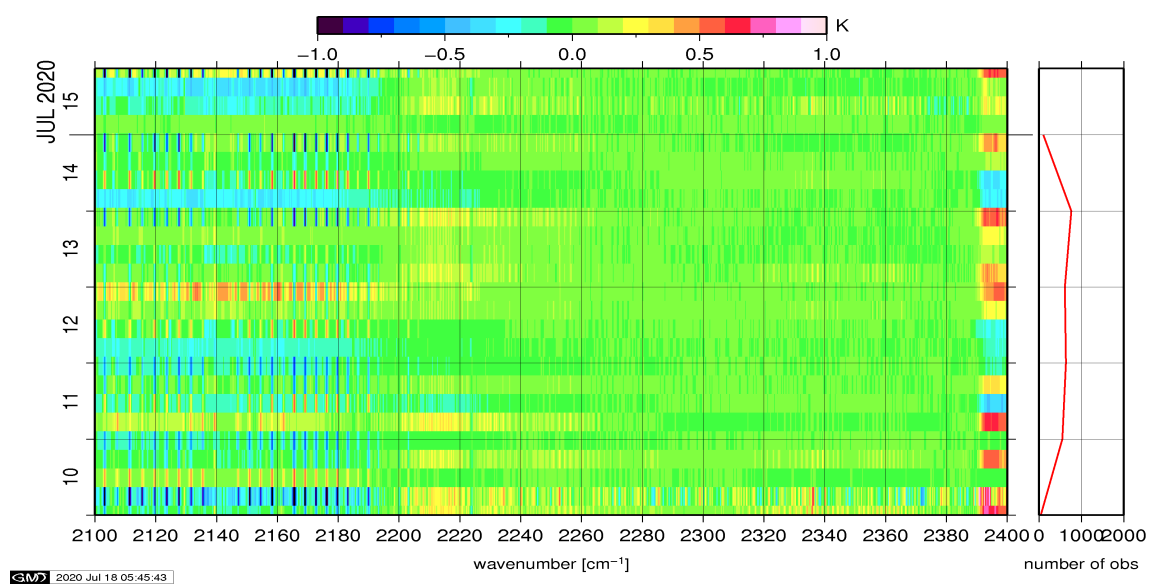


Figure 15: Radiance Anomaly in BT: CO2 4.3

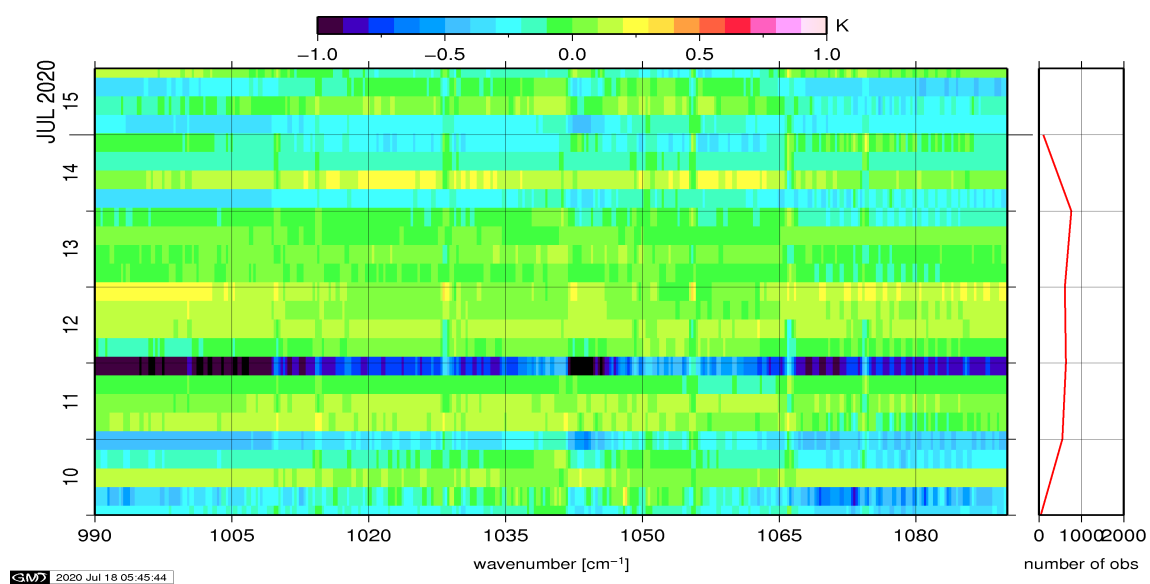


Figure 16: Radiance Anomaly in BT: O3