

IASI L0 and L1 Daily Monitoring Report **Metop-A**

IASI monitoring team

05/04/2020 00:00:00 - 06/04/2020 00:00:00

1 Introduction

This report provides summary monitoring plots and figures from IASI instrument on the Metop-A satellite retrieved from the IASI L0 and L1 ENG product (3 minutes data packet) for 05/04/2020 00:00:00 - 06/04/2020 00:00:00 .

The monitoring data are extracted on PDU basis.

2 Data quantity 05/04/2020 00:00:00 - 06/04/2020 00:00:00

Product Type	Number	Action
L0 HKTM PDUs	479	-
L0 IASI PDUs	479	-
L1 ENG PDUs	478	-
L1 ENG distinct GEPSGranule	479	-
L1 DPX PDUs (RM: IASI-HIRS)	0	e
L1 DPS Files (RM: OBS-CAL NWP based)	478	-

Table 1: Data quantity

APID	Seq from	Seq to	Time from	Time to
PX1 (130)	8755	8758	20200405041409.627	20200405041411.791
PX1 (130)	8767	10751	20200405041413.736	20200405042302.622
PX1 (130)	10763	10766	20200405042305.215	20200405042307.379
PX2 (135)	8755	8758	20200405041409.627	20200405041411.791
PX2 (135)	8767	10751	20200405041413.736	20200405042302.622
PX2 (135)	10763	10766	20200405042305.215	20200405042307.379
PX3 (140)	8755	8757	20200405041409.627	20200405041411.572
PX3 (140)	8767	10750	20200405041413.736	20200405042302.407
PX3 (140)	10762	10766	20200405042305.001	20200405042307.379
PX4 (145)	8755	8757	20200405041409.627	20200405041411.572
PX4 (145)	8766	10750	20200405041413.517	20200405042302.407
PX4 (145)	10762	10766	20200405042305.001	20200405042307.379
IMG (150)	14227	14233	20200405041409.627	20200405041411.572
IMG (150)	14242	106	20200405041413.517	20200405042302.407
IMG (150)	118	122	20200405042305.001	20200405042306.083
VER (160)	11043	11381	20200405041401.627	20200405042305.215
AUX (180)	5463	5531	20200405041402.060	20200405042306.083

Table 2: L0 data gaps

3 Instrument modes

Time	Transition from	Transition to
05/04/2020 00:00:12	-	Normal operation

Table 3: Instrument modes

4 L0 and L1 Data Quality

Flag	Value	Action
L0 IASI PDUs	479	-
L1 ENG PDUs	478	-
L1 ENG distinct GEPSGranule	479	-
GQisFlagQual set (PX1)	99.32 %	-
GQisFlagQual set (PX2)	99.29 %	-
GQisFlagQual set (PX3)	99.31 %	-
GQisFlagQual set (PX4)	99.33 %	-
GQisFlagQual set (all)	99.31 %	-

Table 4: Quality flags

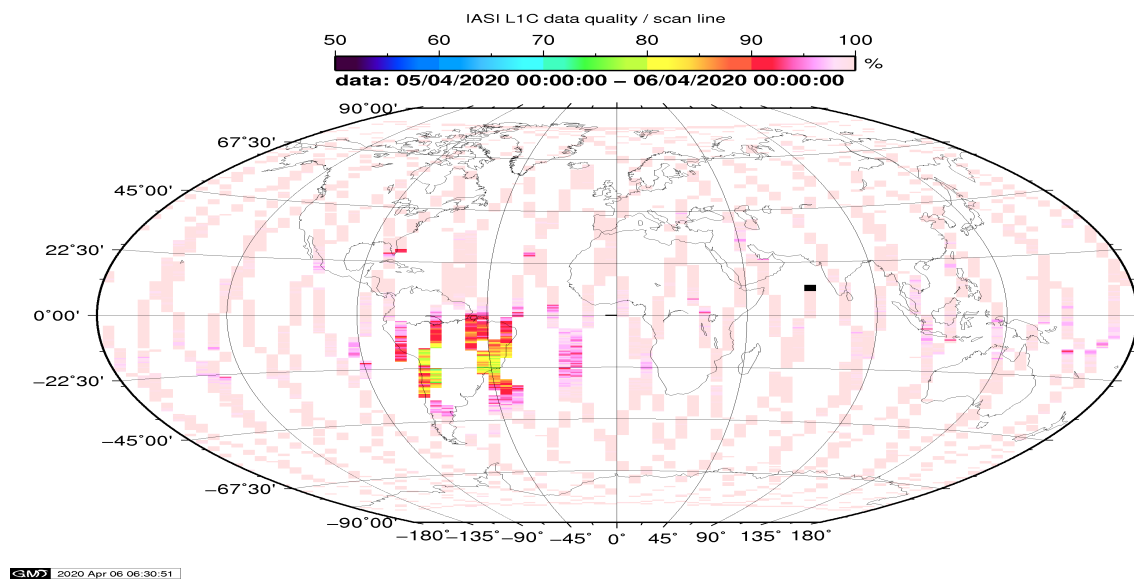


Figure 1: L1C data quality

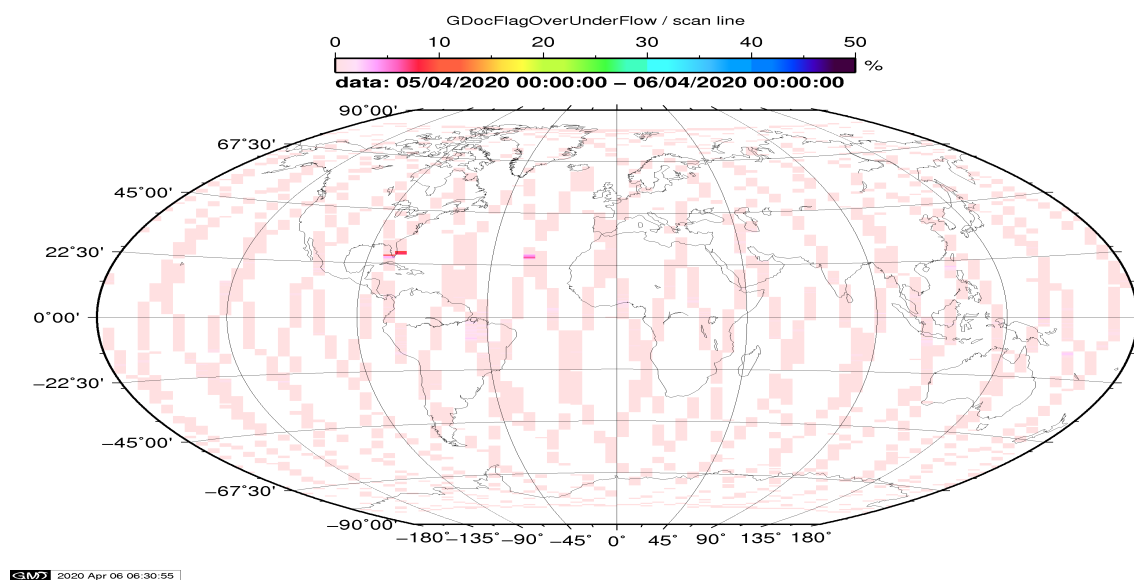


Figure 2: Flag of Over and Under Flows

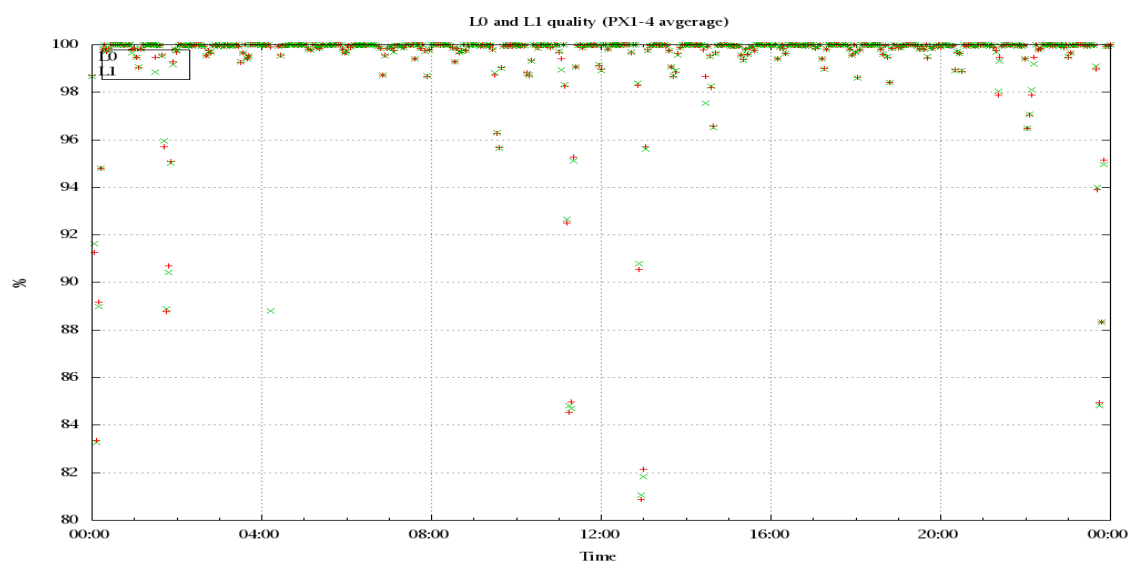


Figure 3: Level 0 and 1C overall quality

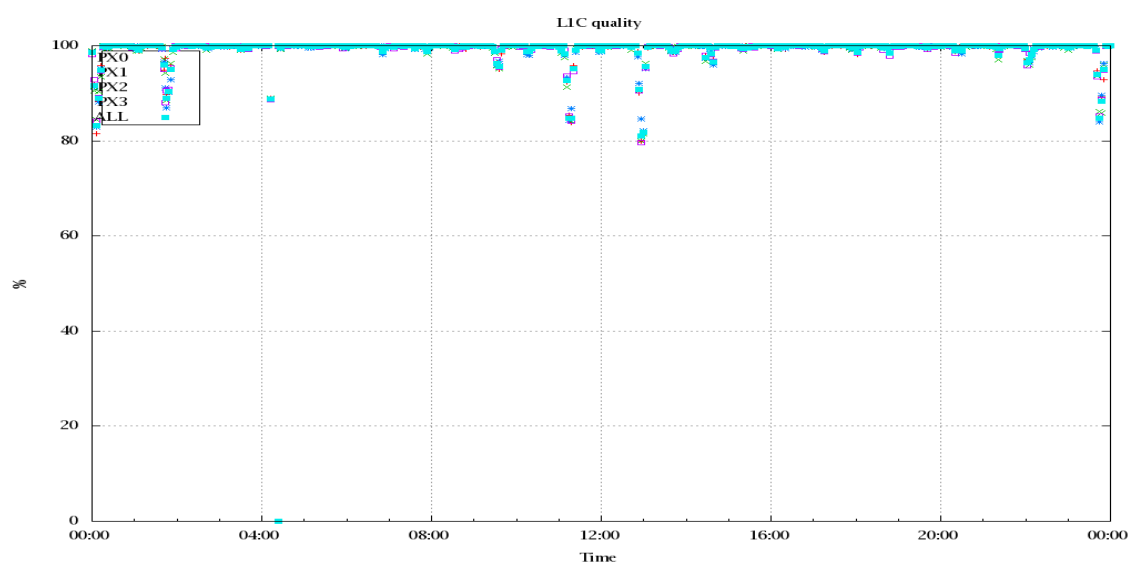


Figure 4: Level 1C quality

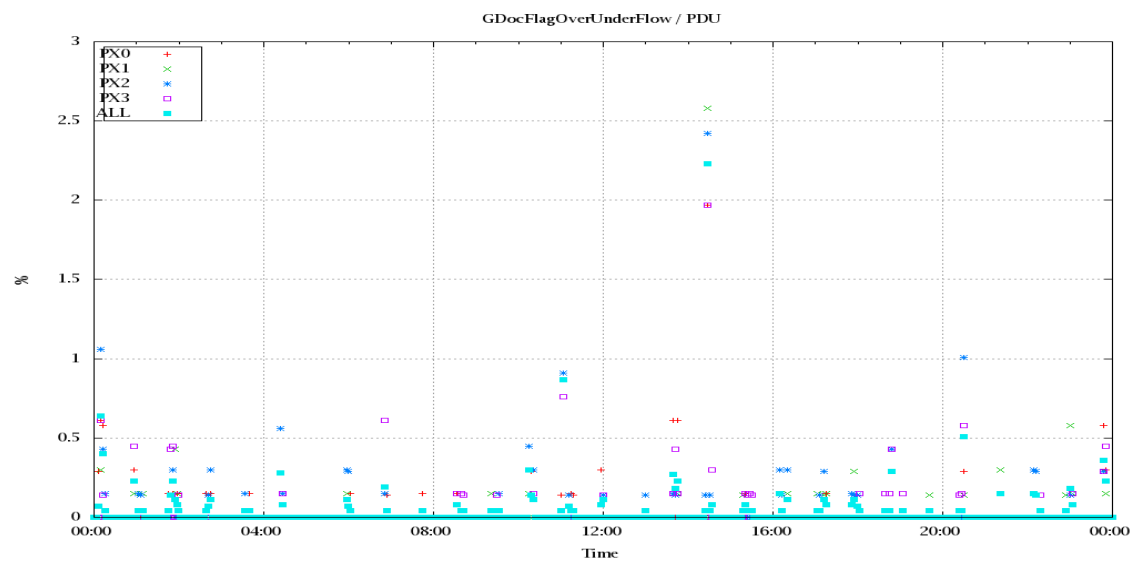


Figure 5: Timeseries of flag of Over and Under Flows

5 Radiance monitoring based on NWP

The radiance monitoring compares the IASI measurements (L1C-eps-products) obtained under clear sky situation over sea with modeled radiances. Cloud identification is based on cloud flag of co-located AVHRR L1B data in addition to information from the IASI L1C clustering analysis here only homogenous situations are taken into account (99.0 percent in first class).

A radiative transfer model (RTM) is feed with co-located ECMWF profiles of T, water vapor and Ozone. Between March 2007 and the 18th of May 2010 RTIASI in Version 4.0 is used. After that date the RTTOV model in V9.3 is used.

Information about the SST is obtained from the AVHRR L1B or taken from AVHRR scenes analysis (CGS only). In the following figures 28 to 34, the so-called radiance anomaly is shown. The radiance anomaly is defined as the difference between the quarter daily radiance average OBS-CAL (over all pixels and scan positions 10 to 20) and the average bias OBS-CAL (over all pixels and scan positions 10 to 20) of the last 30 days.

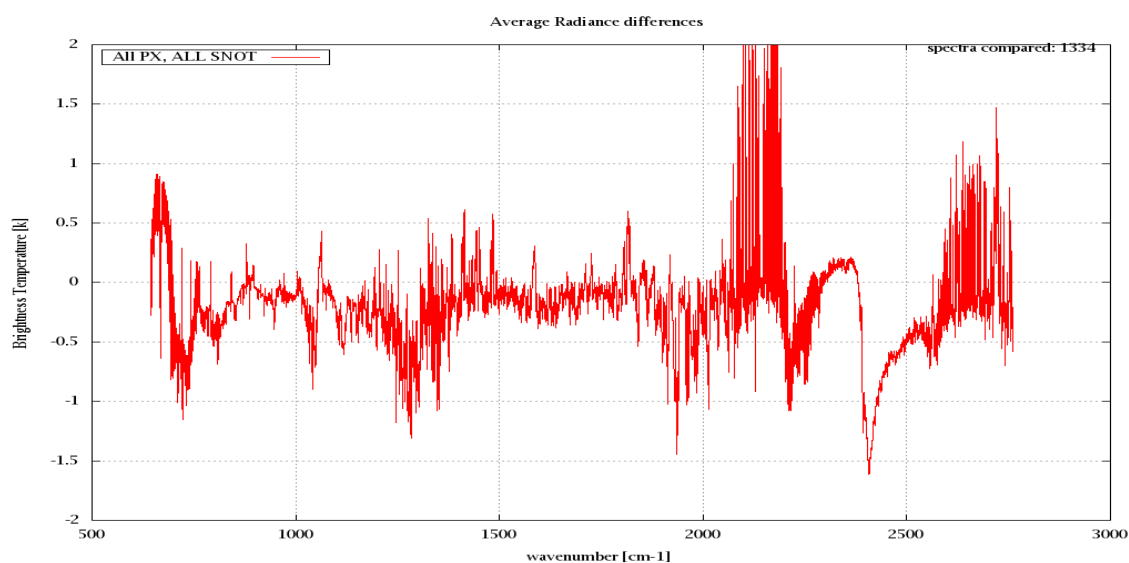


Figure 6: Average Radiance differences: OBS-CAL

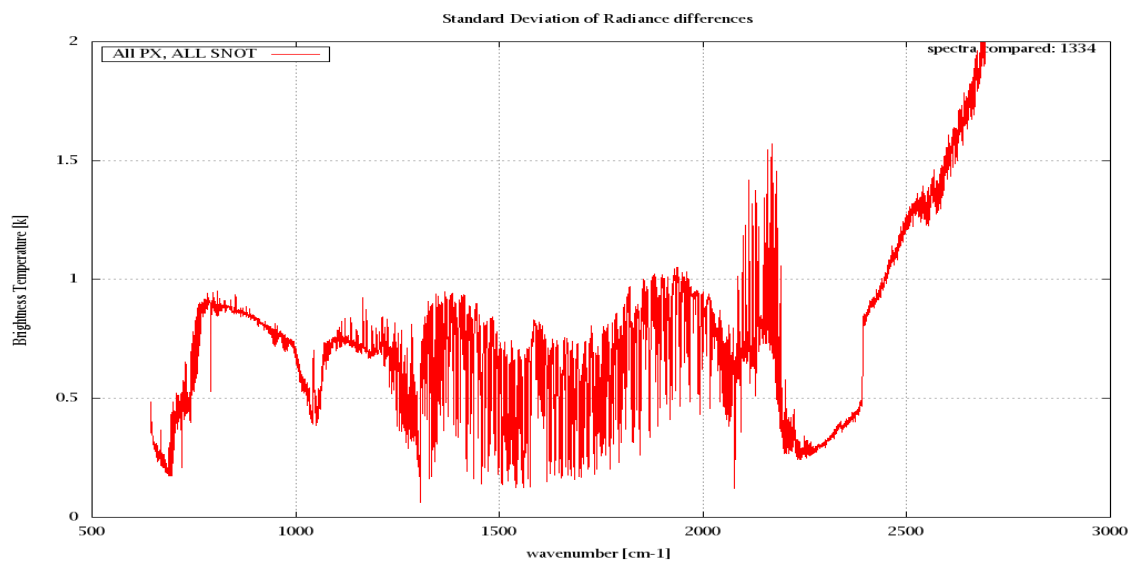


Figure 7: Standard Deviation of Radiance differences

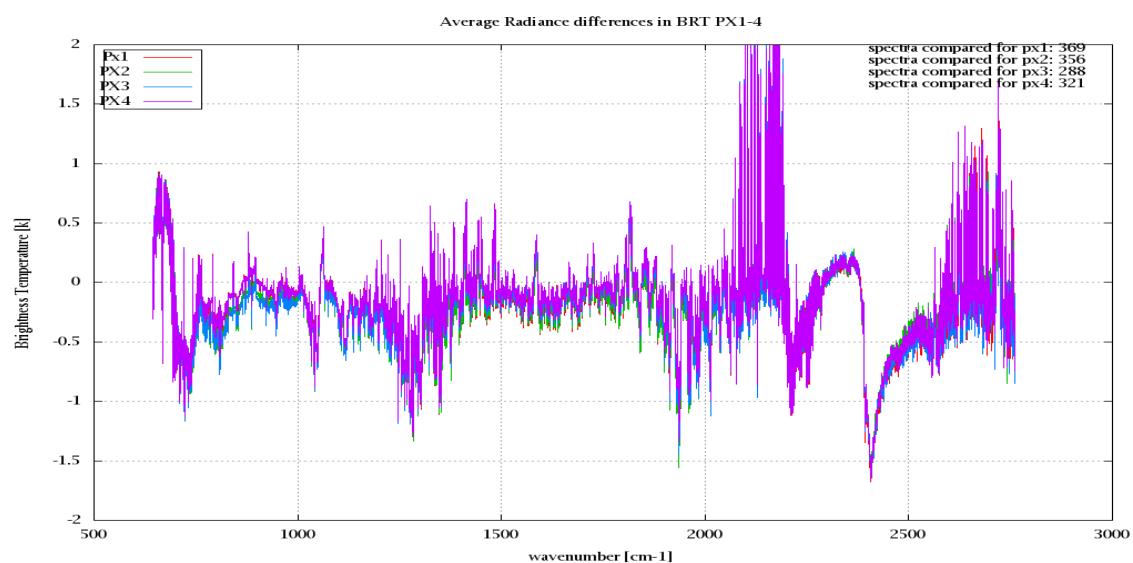


Figure 8: Average Radiance differences: OBS-CAL

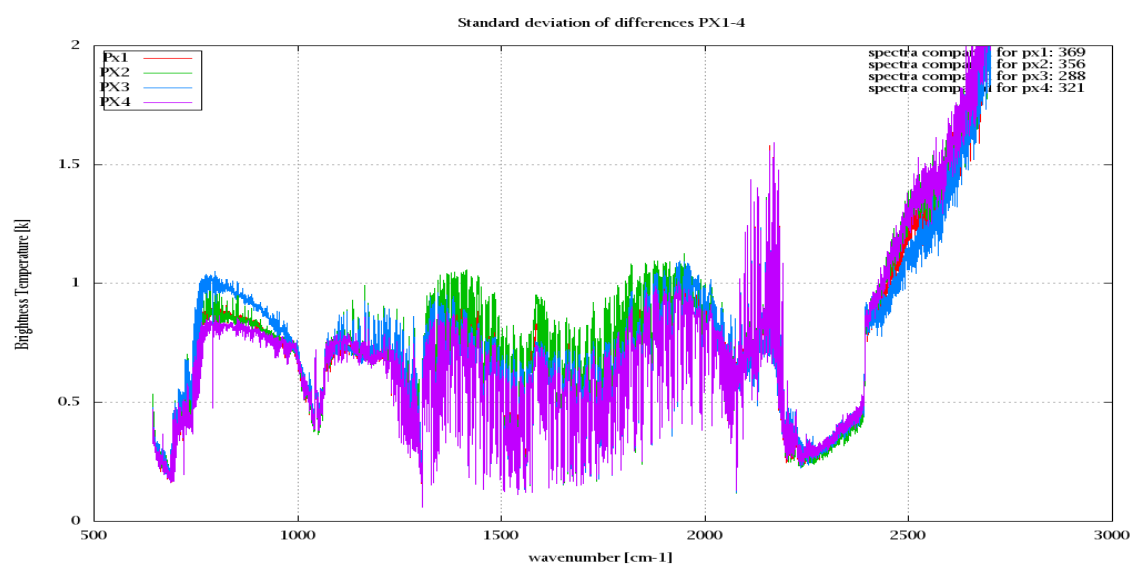


Figure 9: Standard Deviation of Radiance differences

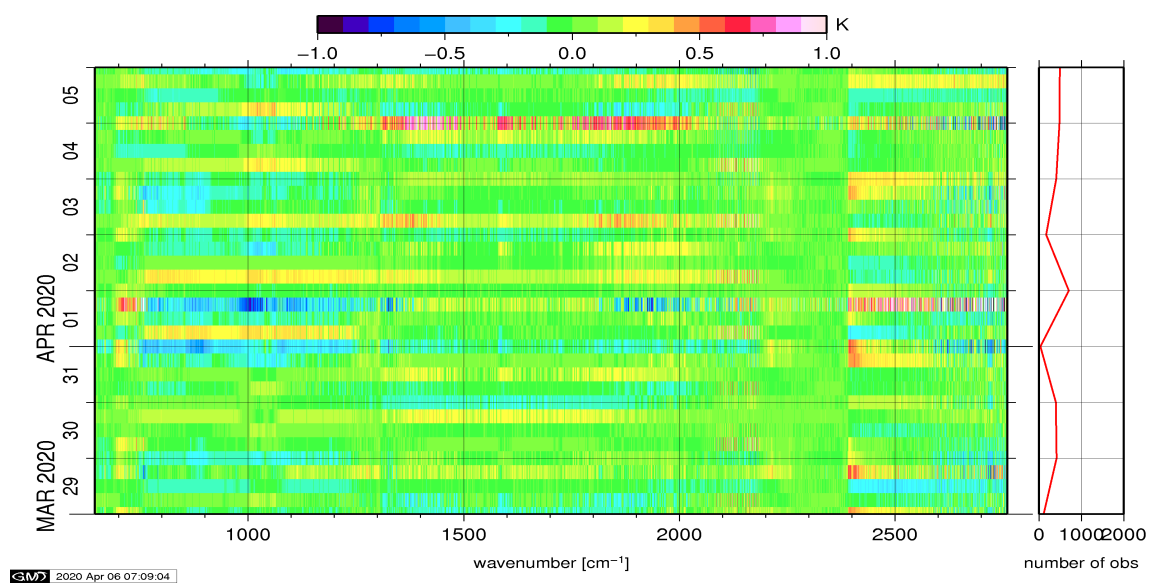


Figure 10: Radiance Anomaly in BT: All Channels

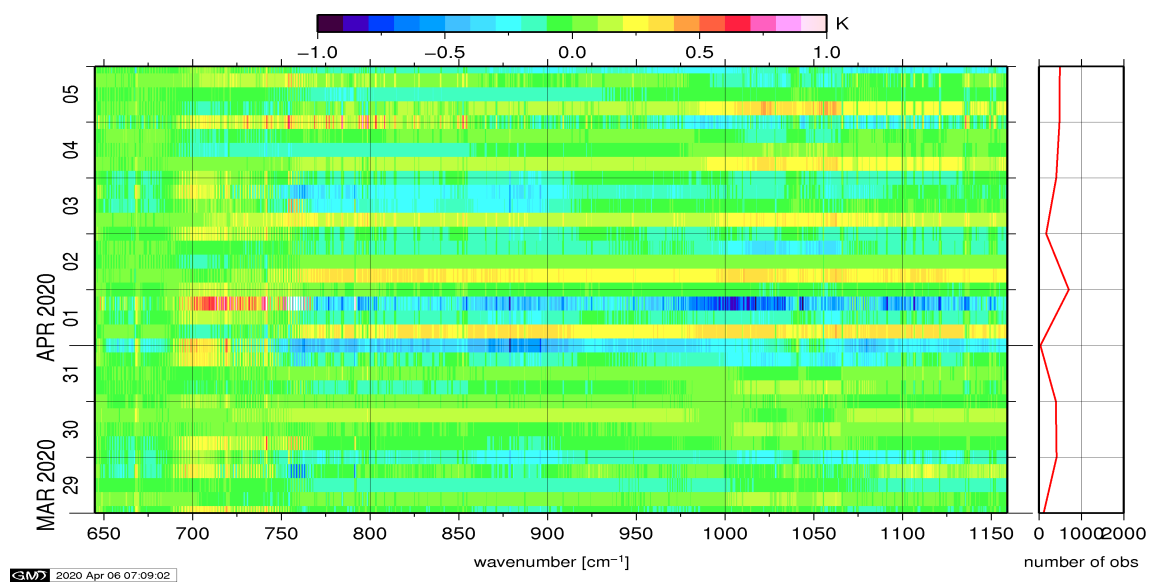


Figure 11: Radiance Anomaly in BT: IASI Band 1

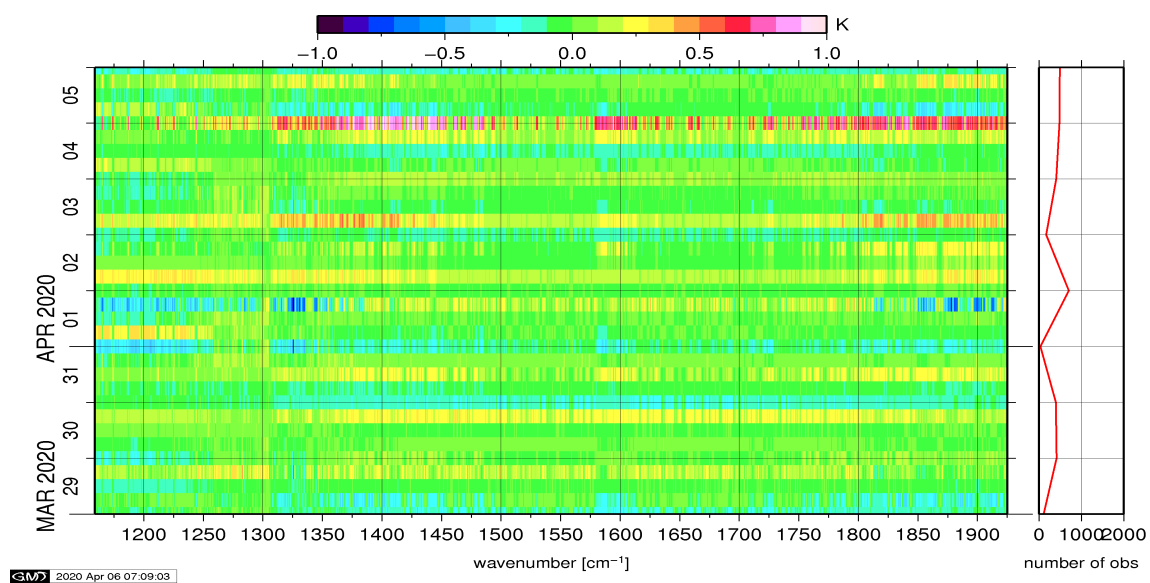


Figure 12: Radiance Anomaly in BT: IASI Band 2

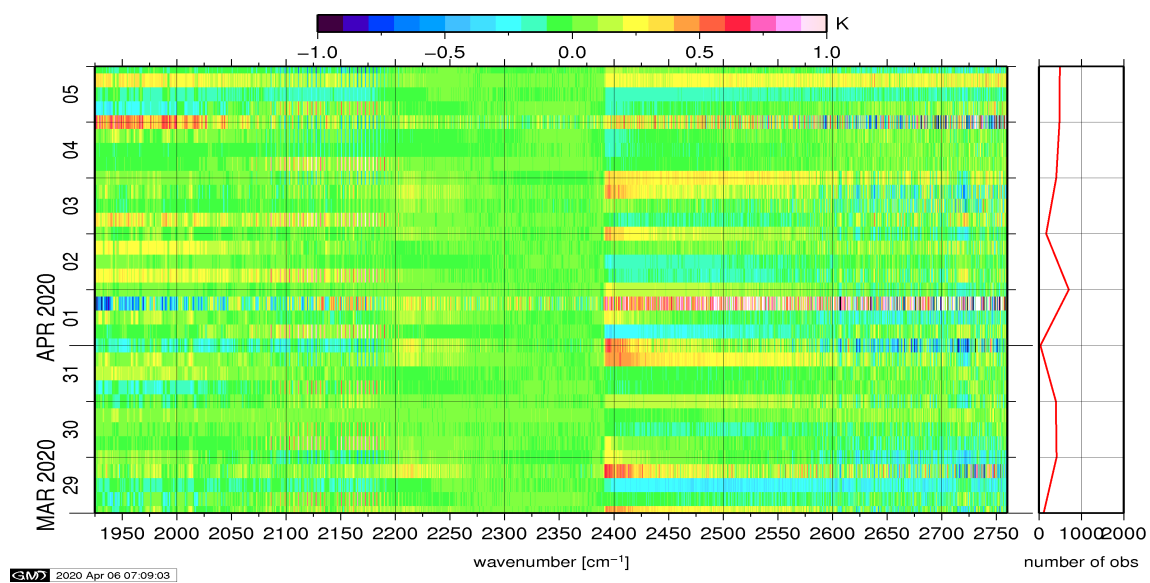


Figure 13: Radiance Anomaly in BT: IASI Band 3

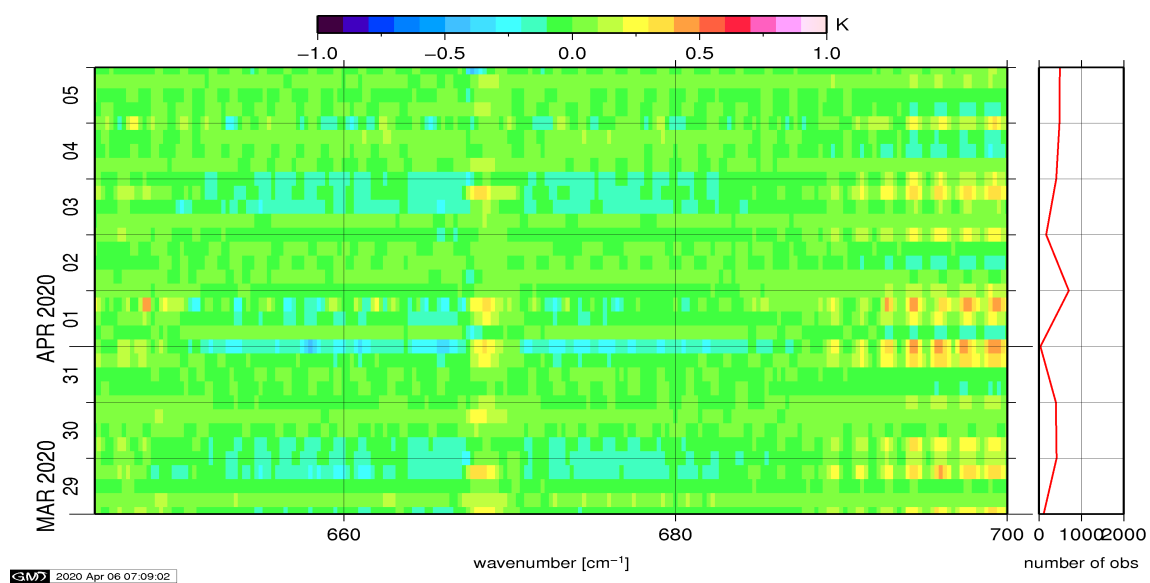


Figure 14: Radiance Anomaly in BT: CO2 14

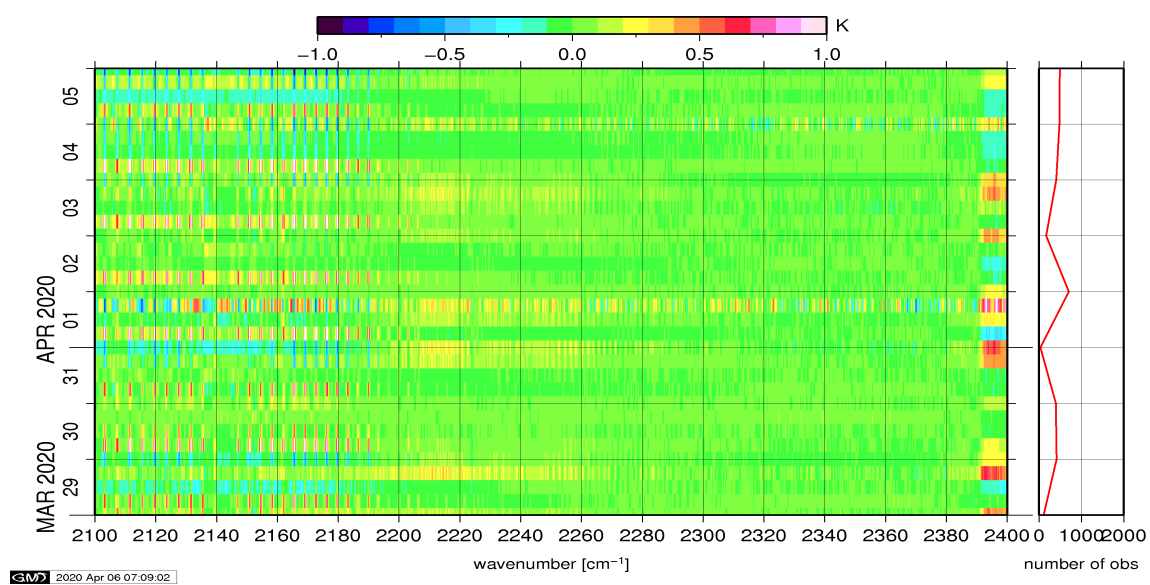


Figure 15: Radiance Anomaly in BT: CO2 4.3

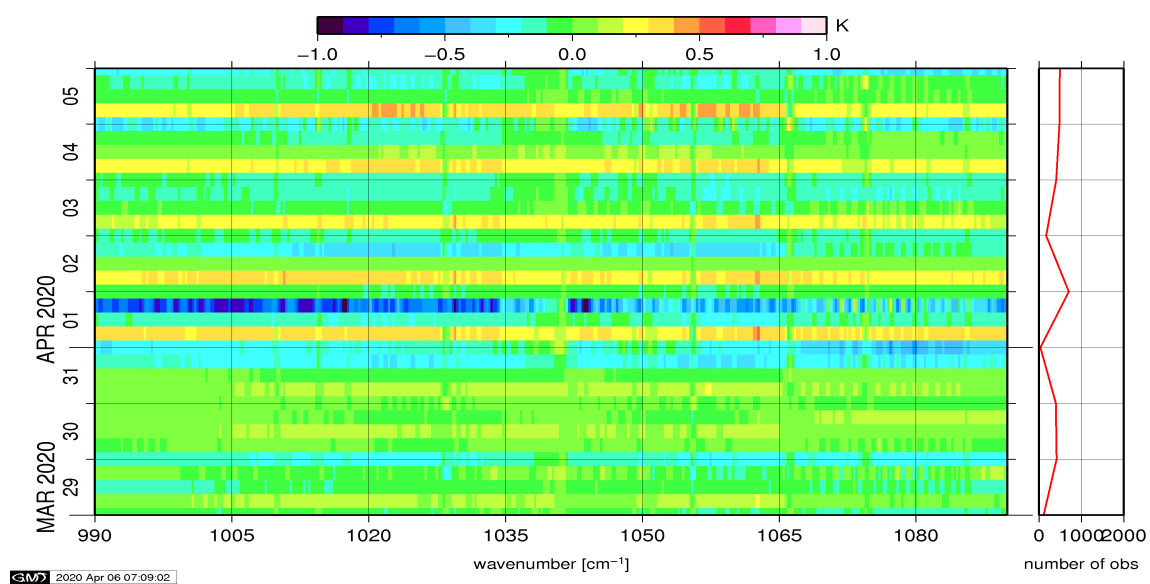


Figure 16: Radiance Anomaly in BT: O3

6 IASI-HIRS radiance comparison Channel 1-19

The radiance comparison of IASI and HIRS/4 on-board Metop is performed on all pixels with distances smaller than 3 km between IASI and HIRS. All sky conditions are covered. The radiance differences IASI - HIRS are given in brightness temperatures at 280K reference NeDT. All conditions (clear, cloudy, day and night) are given in red in the following figures. The clear sky conditions at night are given in green and the clear sky cases during daylight are displayed in blue.

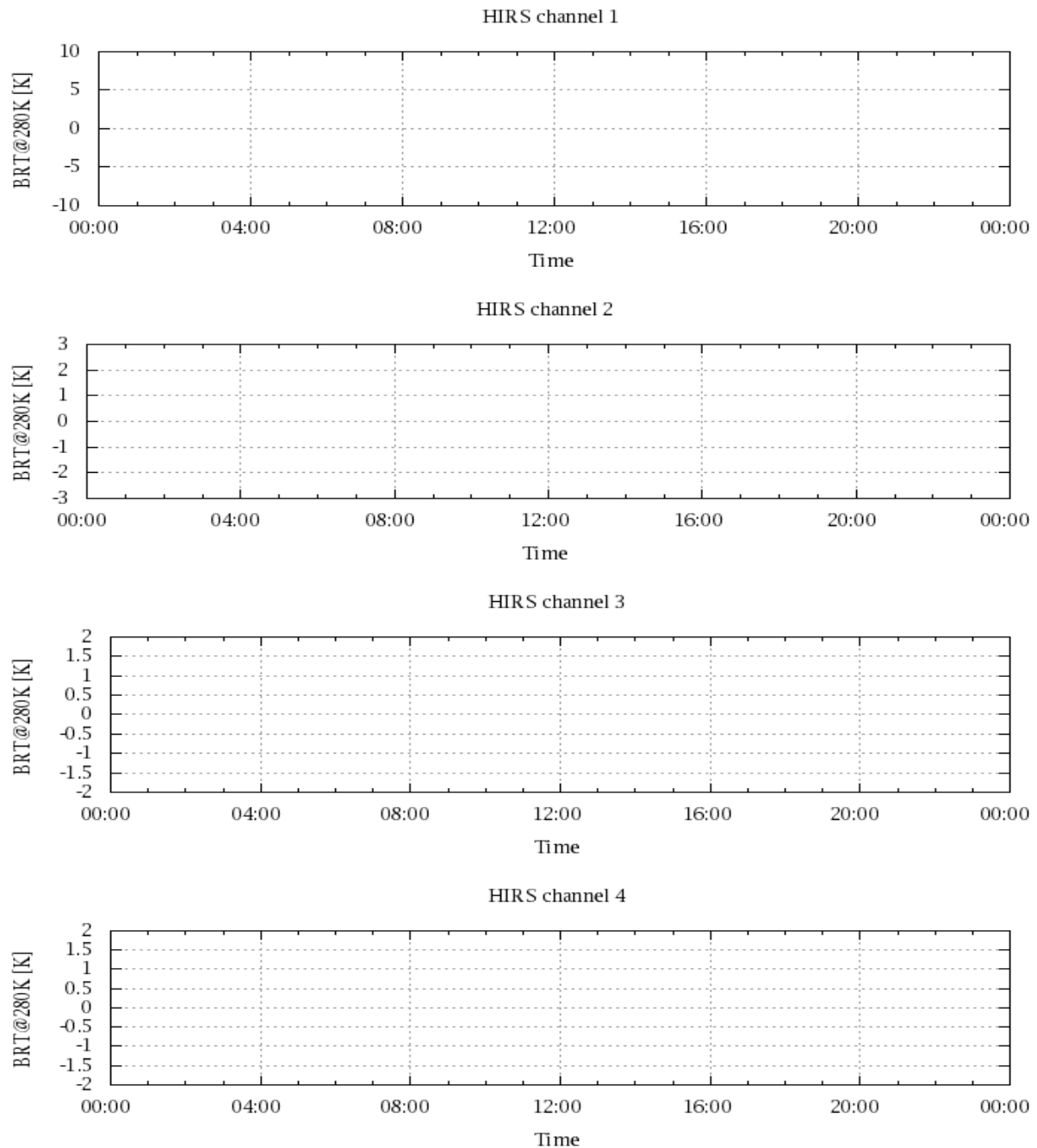


Figure 17: Radiance Differences in BT

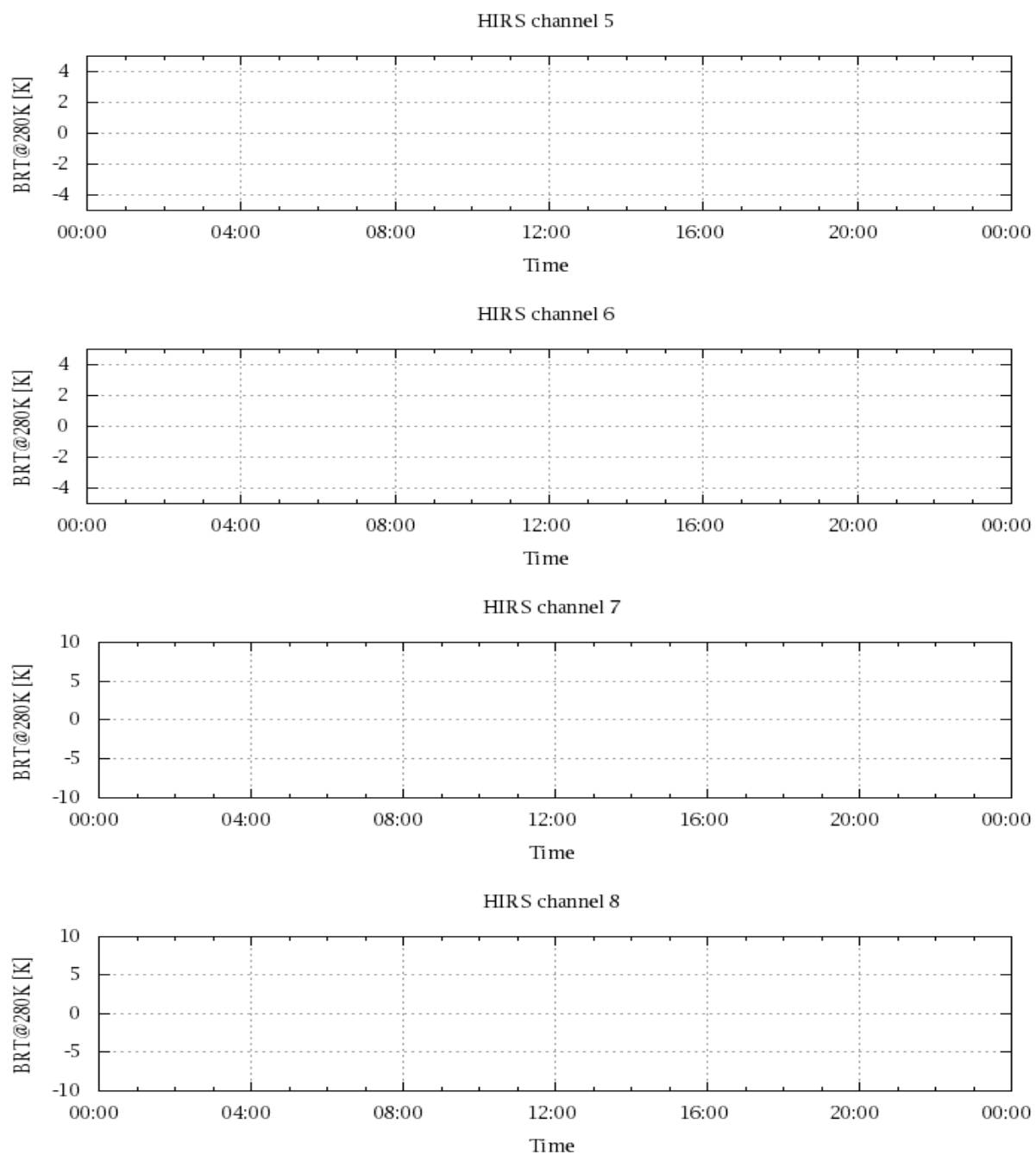


Figure 18: Radiance Differences in BT

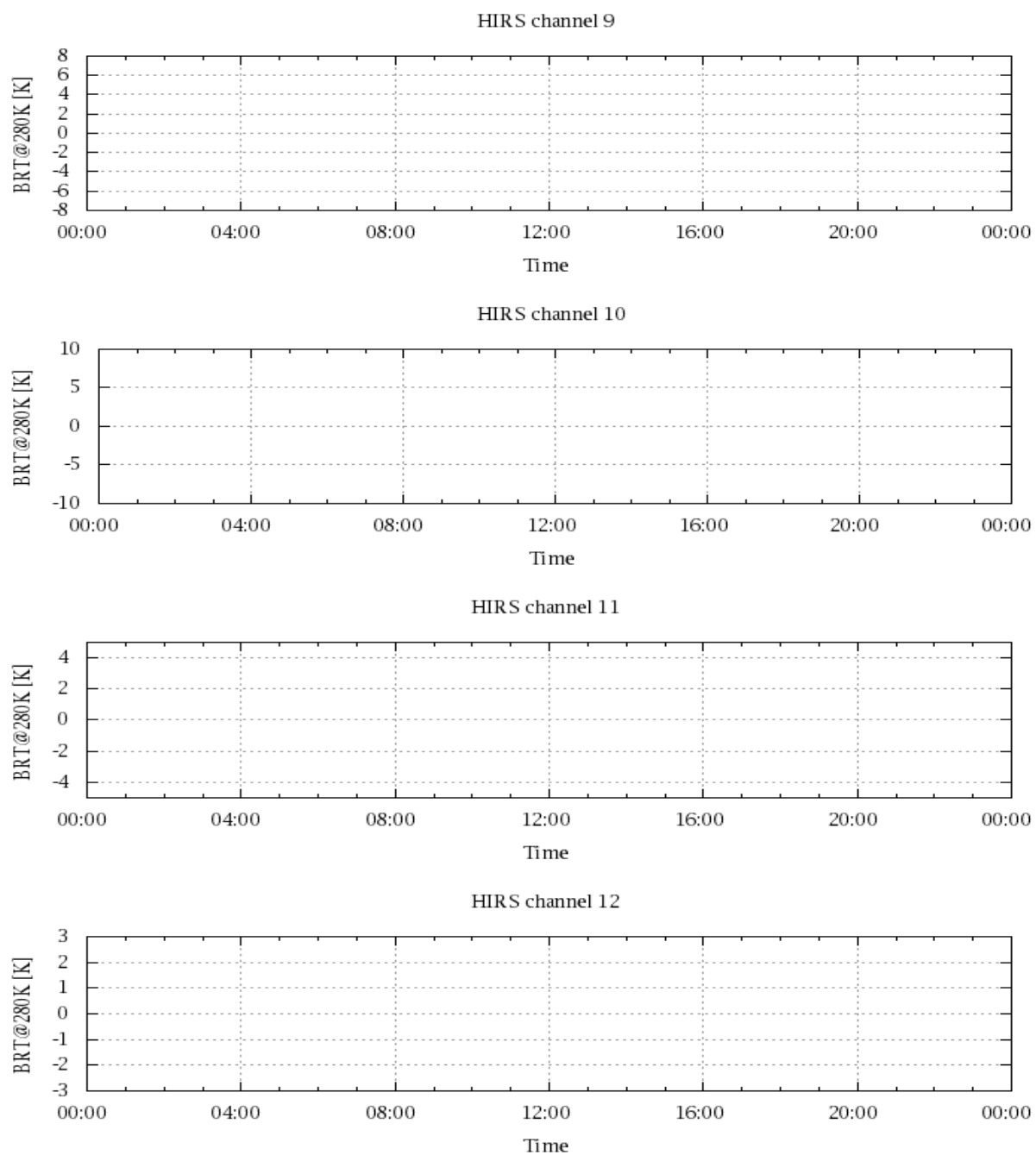


Figure 19: Radiance Differences in BT

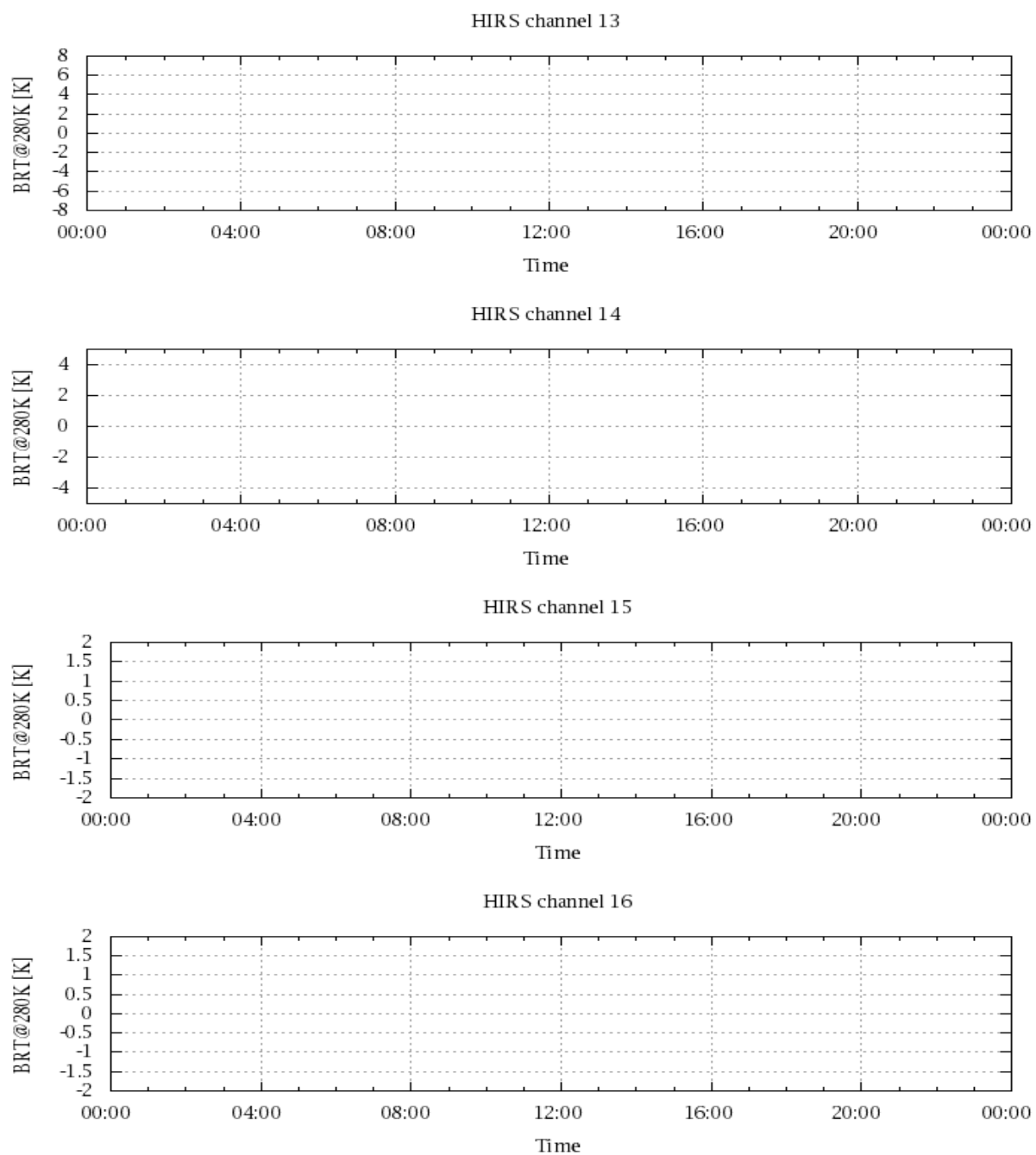


Figure 20: Radiance Differences in BT

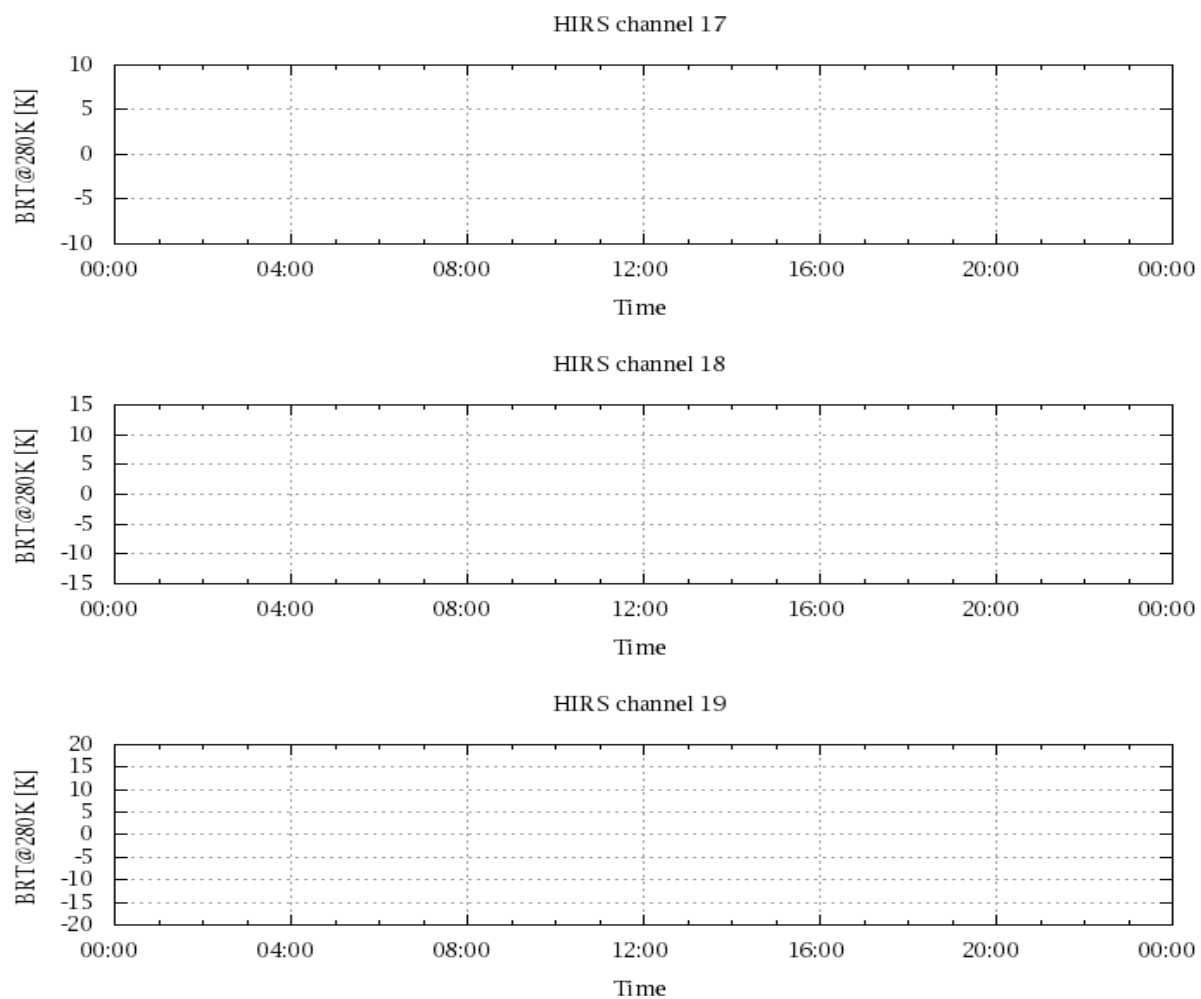


Figure 21: Radinace Differences in BT