

ASCAT DAILY Report

Metop-A

OPE

DAY 2020_255

20200911000000 - 20200911235959

DATA STATISTICS

BASED ON ORBITS (#14)

72104 72105 72106 72107 72108 72109 72110 72111 72112 72113 72114 72115 72116
72117 72118

DB STATISTICS : OPE M02_20200911

| | | | | |
|---------|-------|------|-------|-------|
| SMO 476 | 2.46 | .78 | 1.34 | 5.78 |
| SMR 474 | 6.09 | 1.23 | 3.86 | 10.03 |
| SZF 458 | 1.46 | 2.22 | .51 | 32.39 |
| xxx 478 | 33.24 | 4.99 | 15.11 | 47.74 |

INGATE (STORE) STATISTICS : OPE M02_20200911

| | | |
|--------|---------------------------------------|-----------------------------------|
| xxx_1A | /fbf/tcdras/store/gsl/ASCA_xxx_1A_M02 | -- number of files (xxx_1A) : 478 |
| SZO_1B | /fbf/tcdras/store/gsl/ASCA_SZO_1B_M02 | -- number of files (SZO_1B) : 478 |
| SZR_1B | /fbf/tcdras/store/gsl/ASCA_SZR_1B_M02 | -- number of files (SZR_1B) : 478 |
| SZF_1B | /fbf/tcdras/store/gsl/ASCA_SZF_1B_M02 | -- number of files (SZF_1B) : 478 |
| SMO_02 | /fbf/tcdras/store/gsl/ASCA_SMO_02_M02 | -- number of files (SMO_02) : 478 |
| SMR_02 | /fbf/tcdras/store/gsl/ASCA_SMR_02_M02 | -- number of files (SMR_02) : 478 |

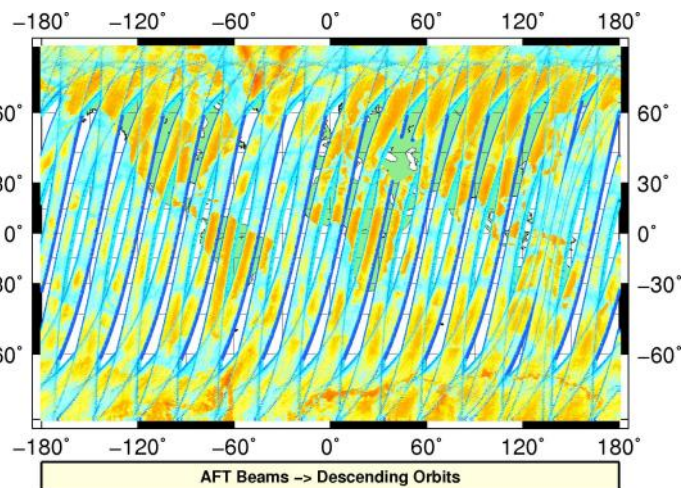
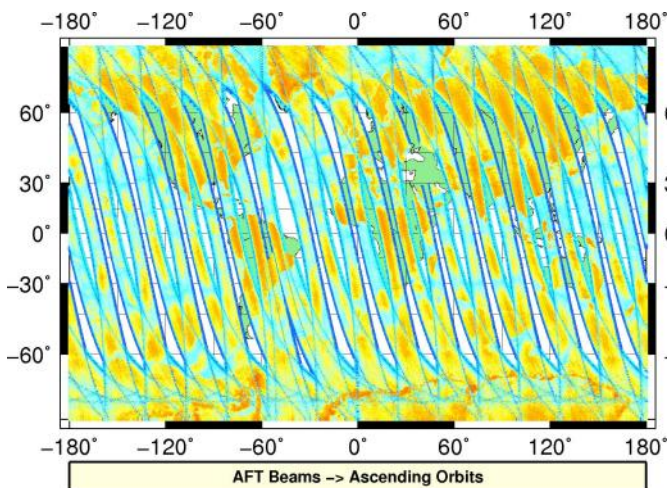
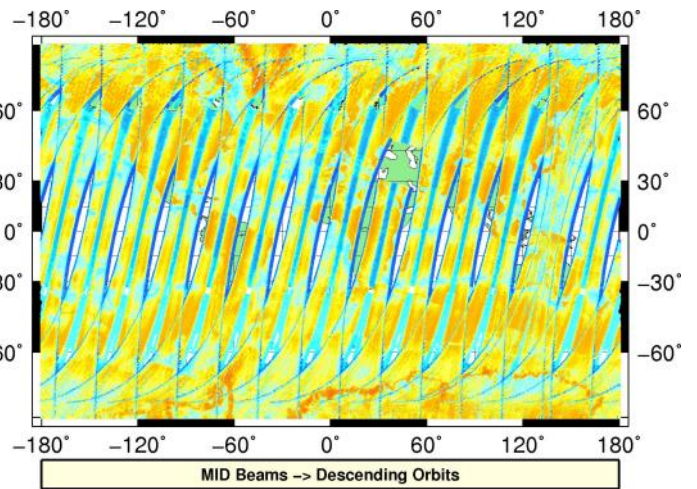
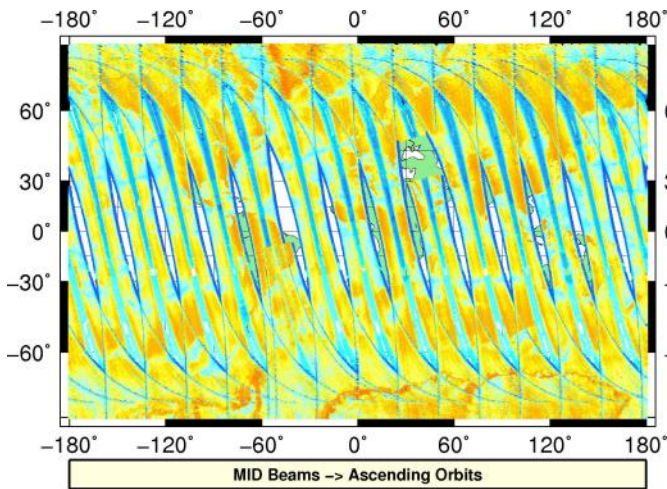
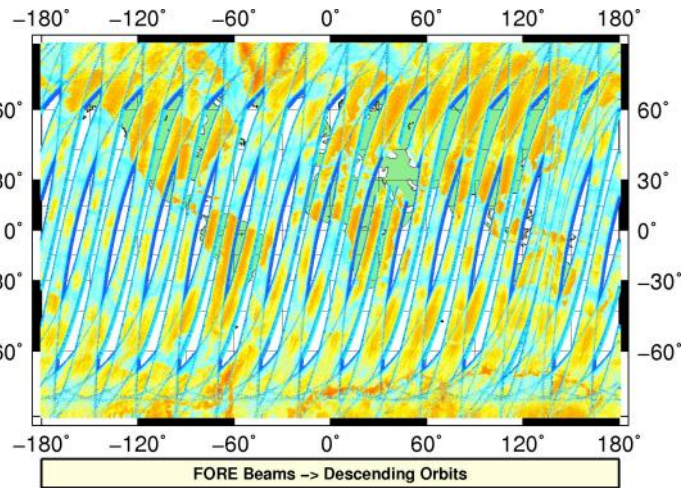
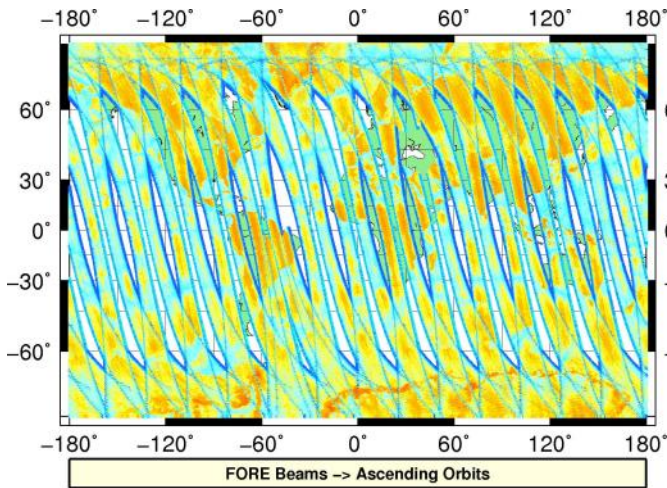
Overview

Configuration and SPHR content

| Parameter | Value |
|--------------------------|---|
| SENSING START-STOP | 20200911000000 - 20200911235959 |
| ORBIT START-STOP | - |
| SATELLITE | M02 |
| SW - DPU Version | 3.9 (57) |
| SW - ICU Version | 2.03 (35) |
| PARAM - Drive Level ID | 0 (Nominal drive level as defined in the active DPU Data Set) |
| PARAM - DPU Data Set ID | 4 |
| PARAM - Revision ID | 0 |
| INST - Table Set ID | 0 (no calibration, nominal table set used) |
| INST - Redundancy Config | 127 |
| | nominal ICU |
| | nominal DPU |
| | nominal RFU |
| | nominal HPA |
| | nominal SFE |
| | nominal SFE LNA |
| | nominal signal path (from HPA_B) |
| N_L1A_MDR | 605450 |
| N_L1A_MDR_B0 | 100909 |
| N_L1A_MDR_B1 | 100909 |
| N_L1A_MDR_B2 | 100908 |
| N_L1A_MDR_B3 | 100908 |
| N_L1A_MDR_B4 | 100908 |
| N_L1A_MDR_B5 | 100908 |
| N_GAPS | 48 |
| TOTAL_GAPS_SIZE | 16843800 |
| N_HKTM_PACKETS_RECEIVED | 16093 |
| N_F_NOISE | 0 |
| N_F_PG | 0 |
| N_V_PG | 0 |
| N_F_FILTER | 0 |
| N_V_FILTER | 0 |
| N_F_PGP | 0 |
| N_F_NP | 0 |
| N_F_ORBIT | 0 |
| N_F_ATTITUDE | 0 |
| N_F_OMEGA | 0 |
| N_F_MAN | 0 |
| N_F_OSV | 0 |
| N_F_E_TEL_PRES | 0 |
| N_F_E_TEL_IR | 0 |
| N_F_CE | 0 |
| N_V_CE | 0 |
| N_F_OA | 0 |
| N_F_TEL | 0 |
| N_F_REF | 0 |
| N_F_SA | 1052804 |
| N_F_LAND | 48268544 |
| N_F_GEO | 3271414 |
| N_F_SIGN | 0 |
| N_L1B_MDR | 0 |
| N_EMPTY_S0_TRIP | 0 |
| N_L1B_MDR_F | 0 |
| N_EMPTY_S0_TRIP_F | 0 |
| N_L1B_MDR_M | 0 |

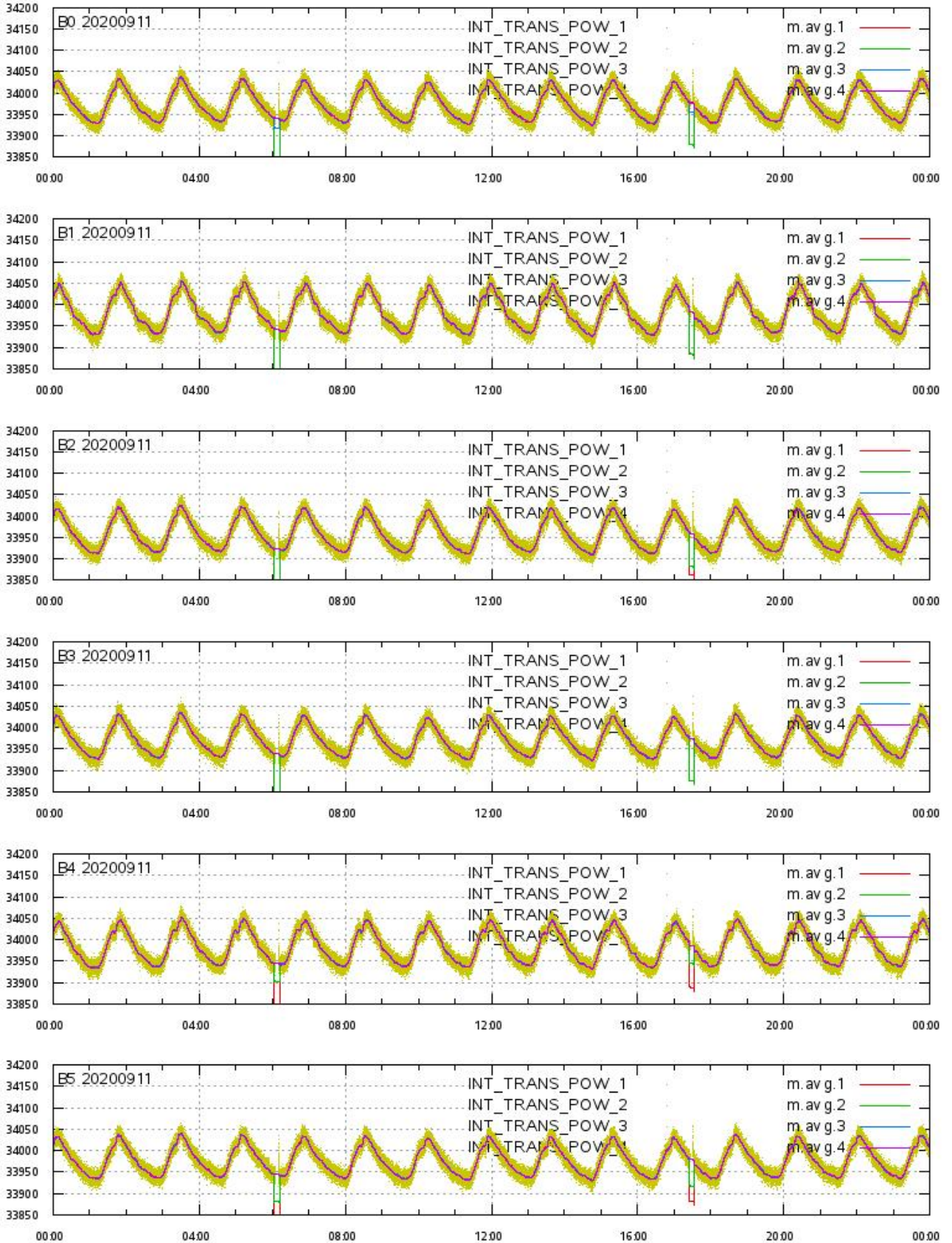
L1A Product

Echo Data Coverage maps



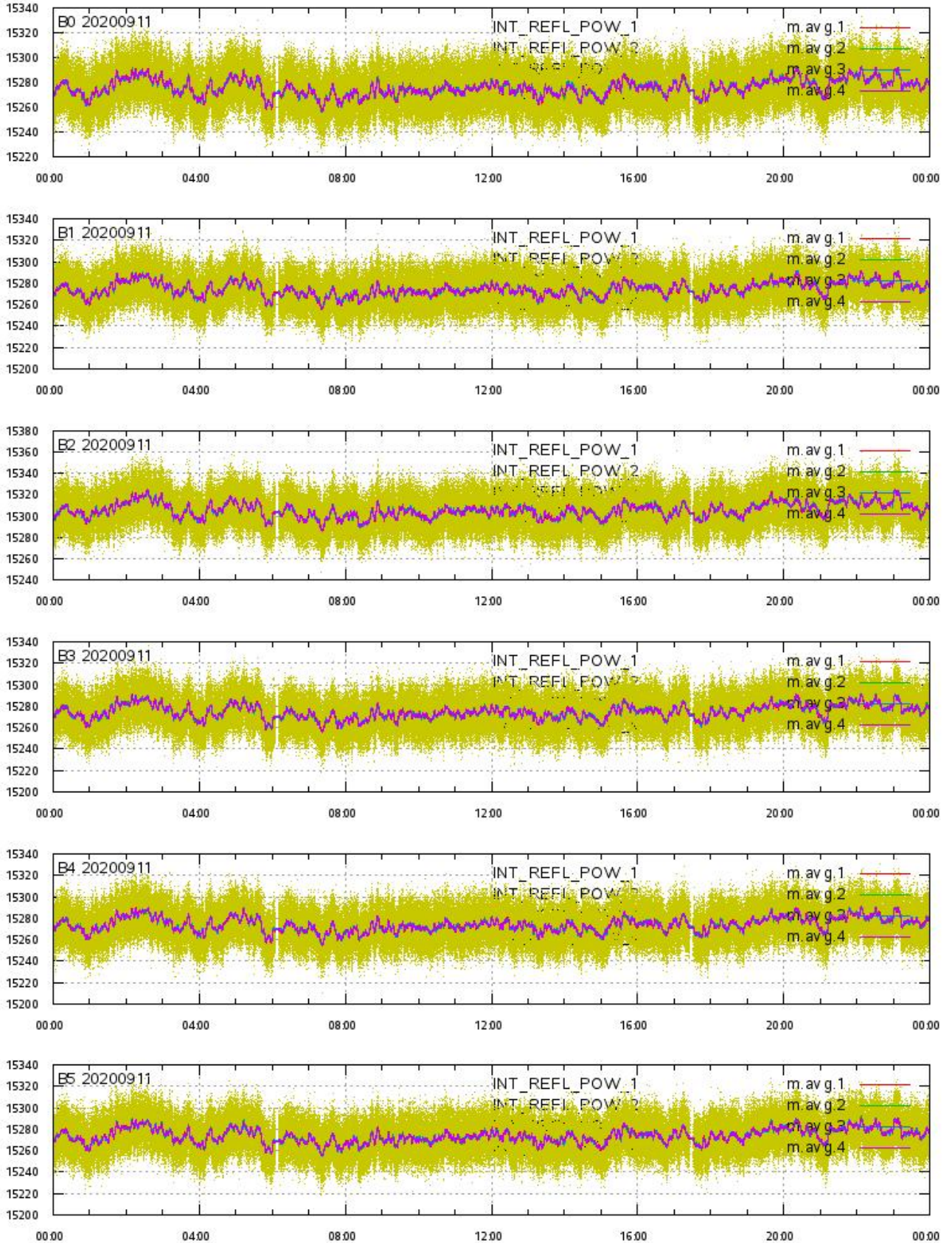
L1A Product

Integrated Transmitted Powers 1-4 per beam 0-5 vs. UTC_LOCALISATION



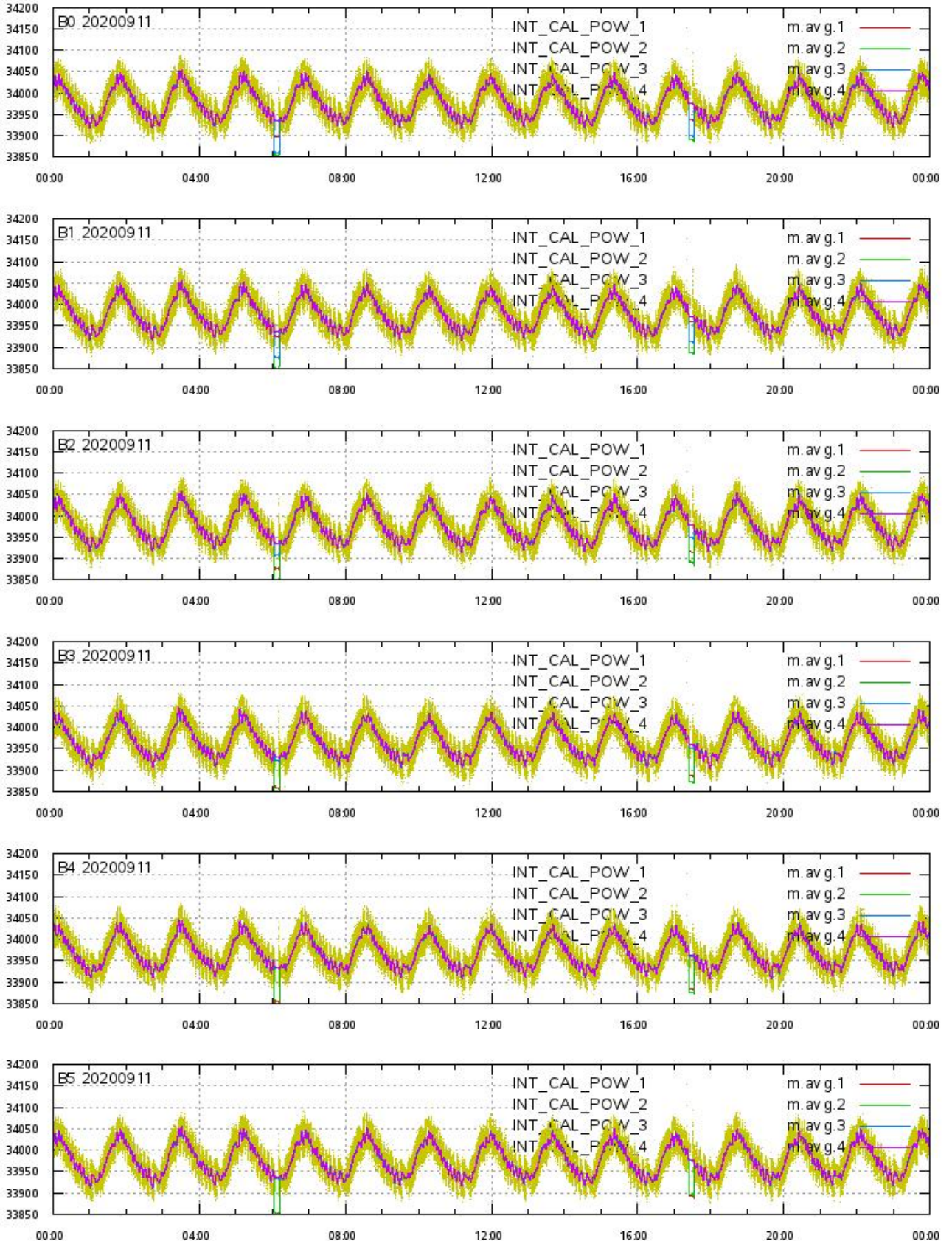
L1A Product

Integrated Reflected Powers 1-4 per beam 0-5 vs. UTC_LOCALISATION



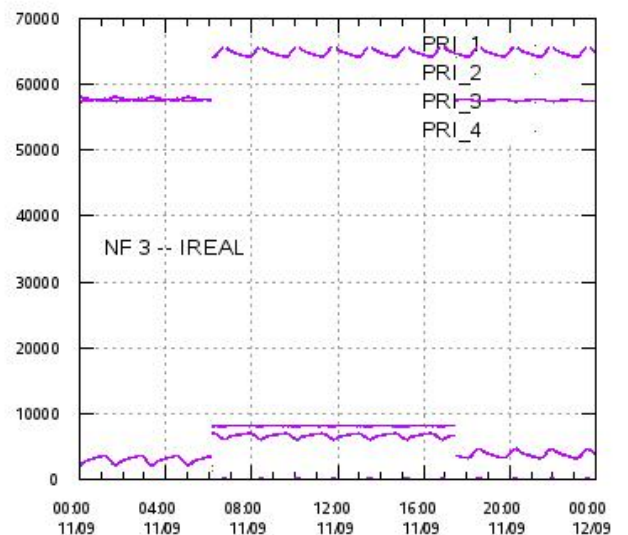
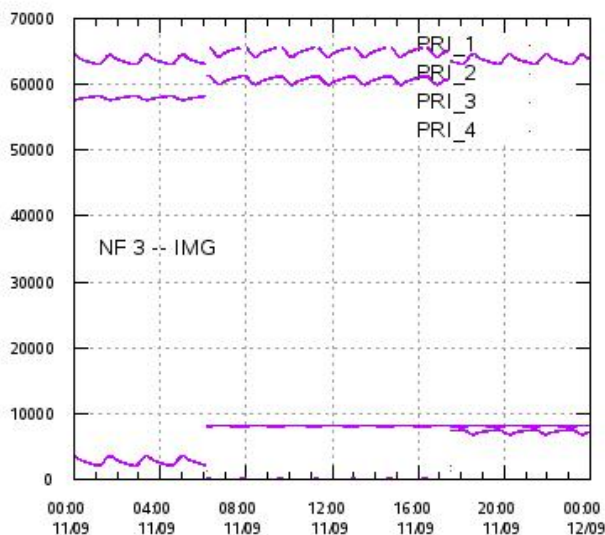
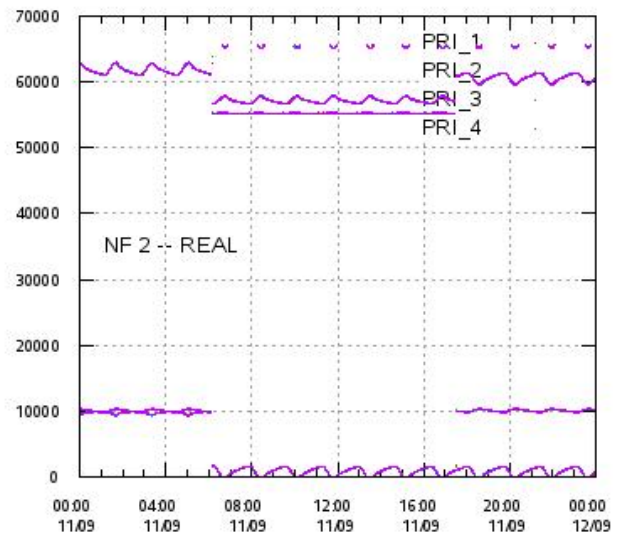
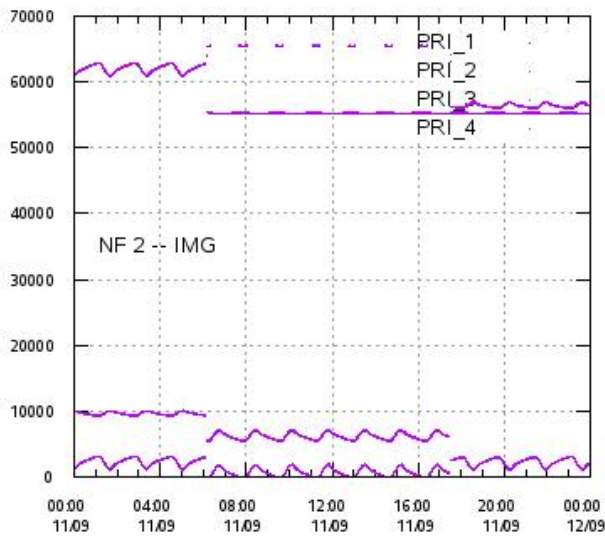
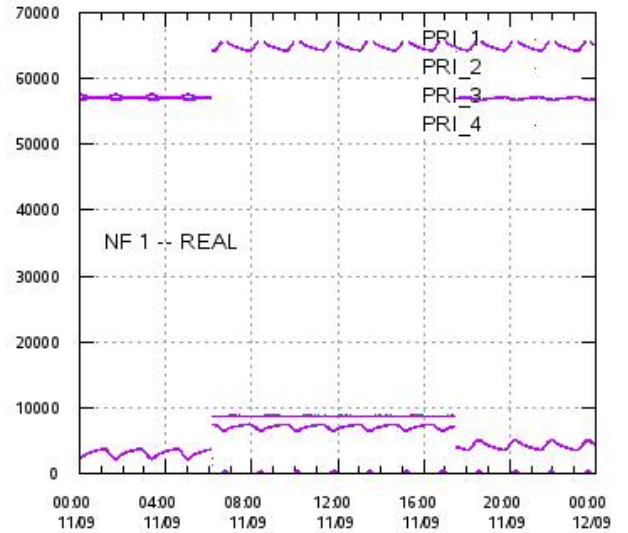
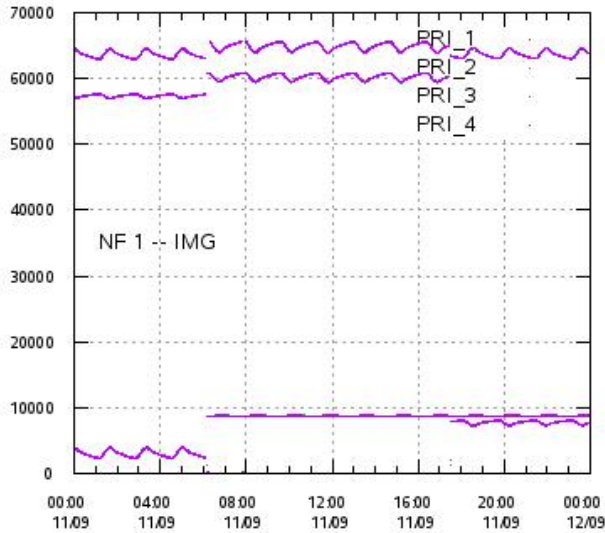
L1A Product

Integrated Calibration Powers 1-4 per beam 0-5 vs. UTC_LOCALISATION



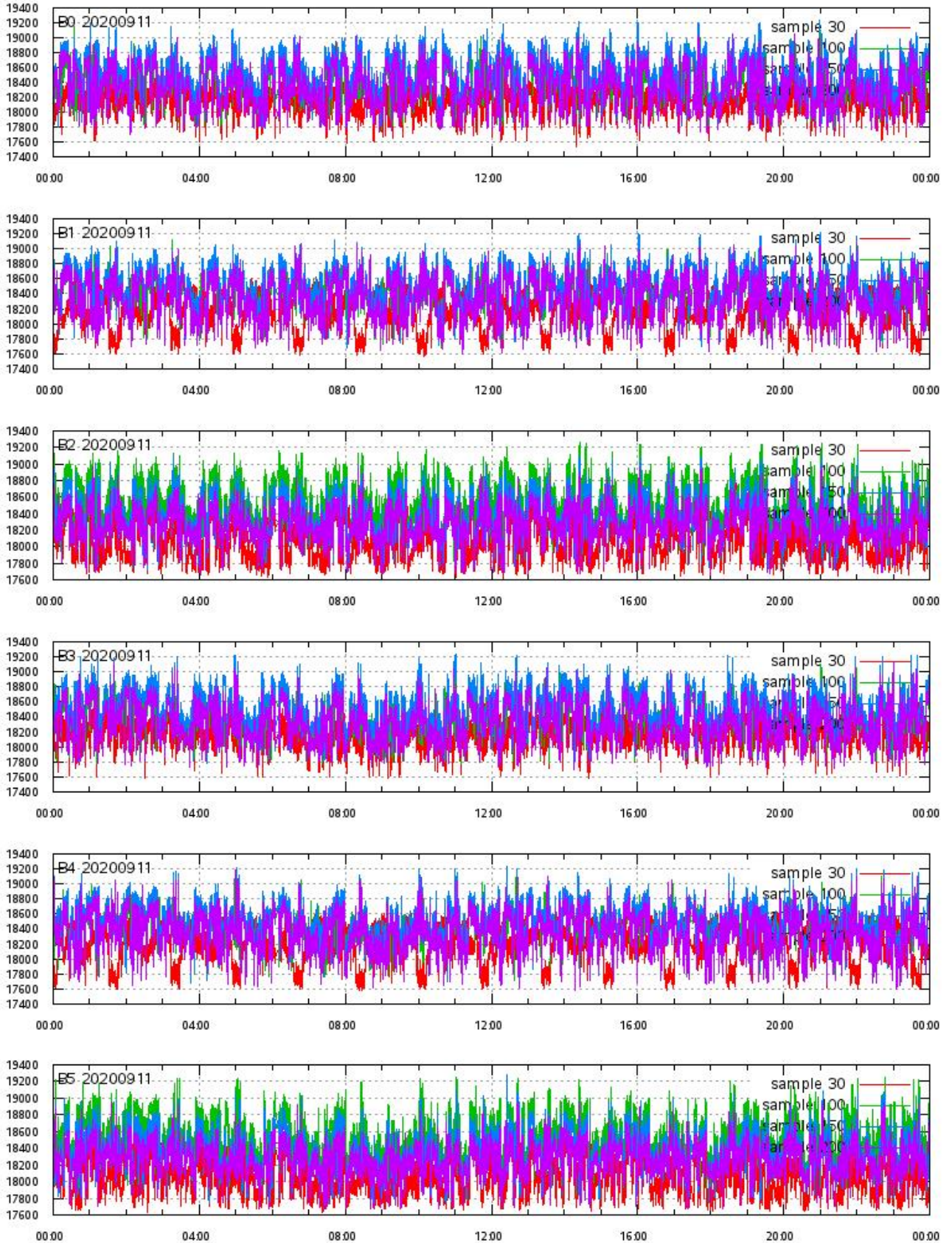
L1A Product

Calibration Powers vs. UTC_LOCALISATION



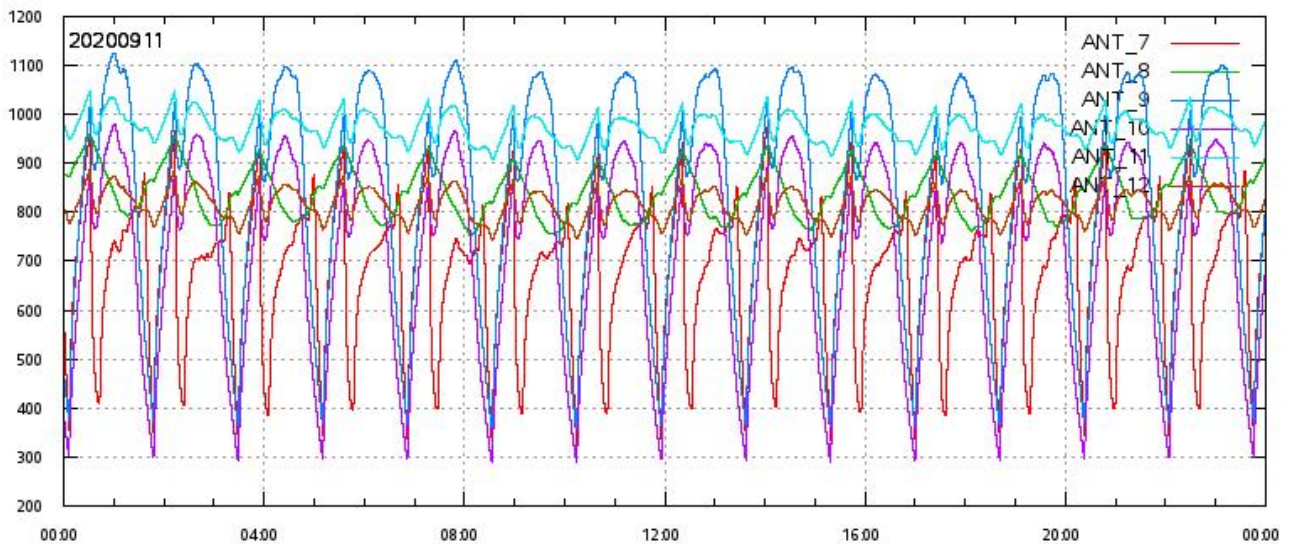
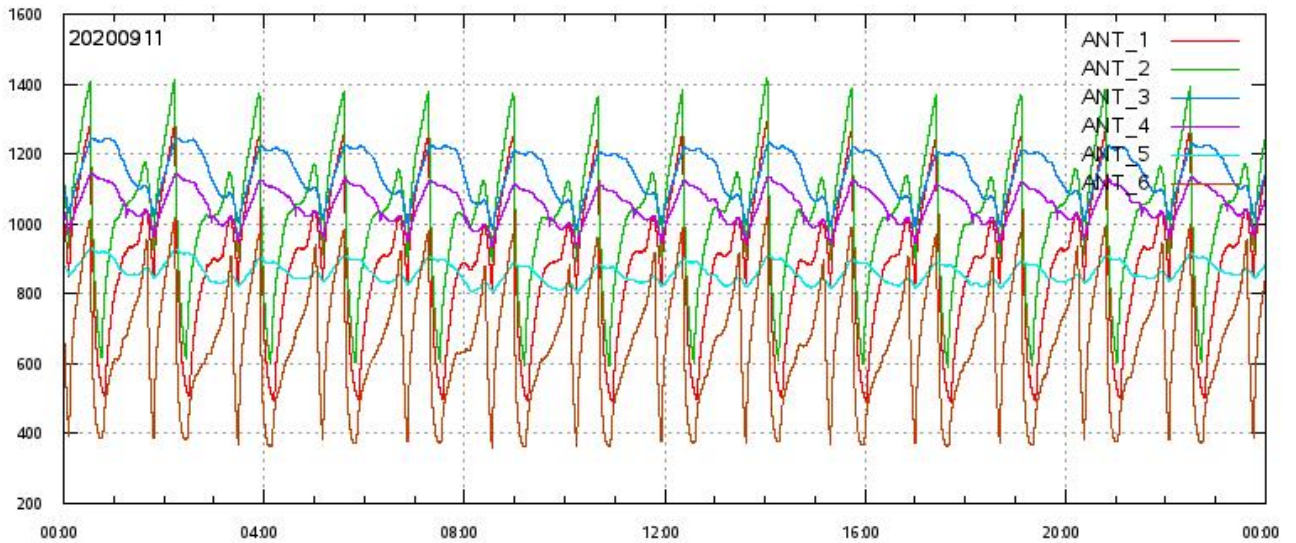
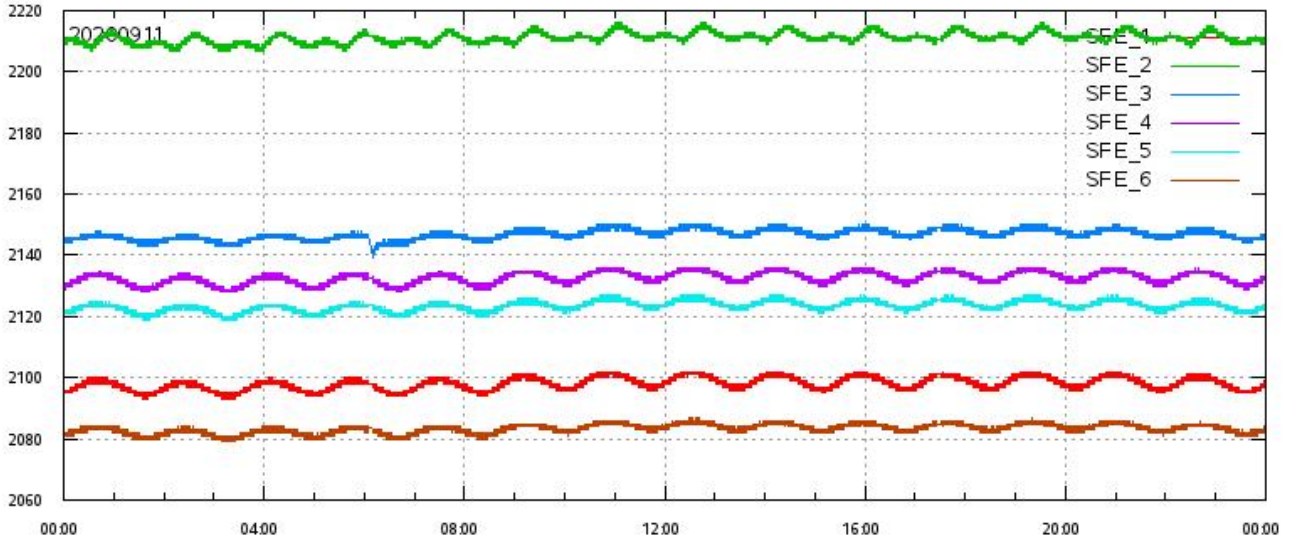
L1A Product

ECHO DATA (raw) for samples 30, 100, 150 and 200 vs. UTC_LOCALISATION



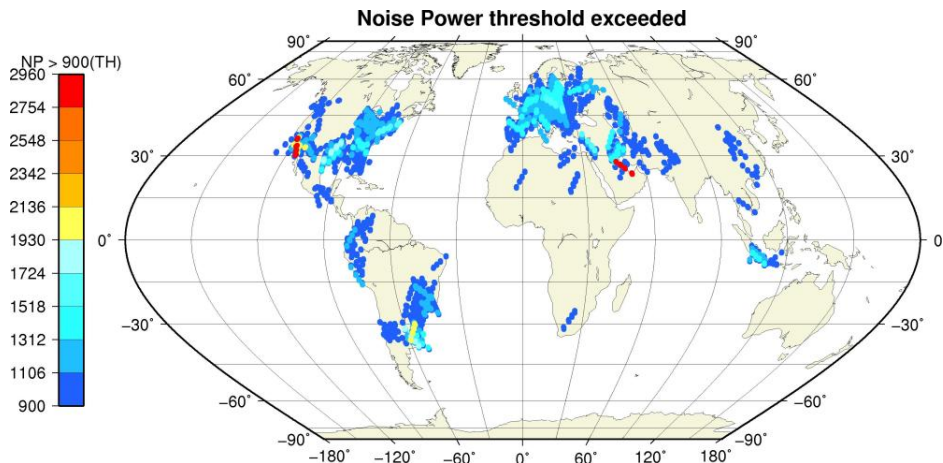
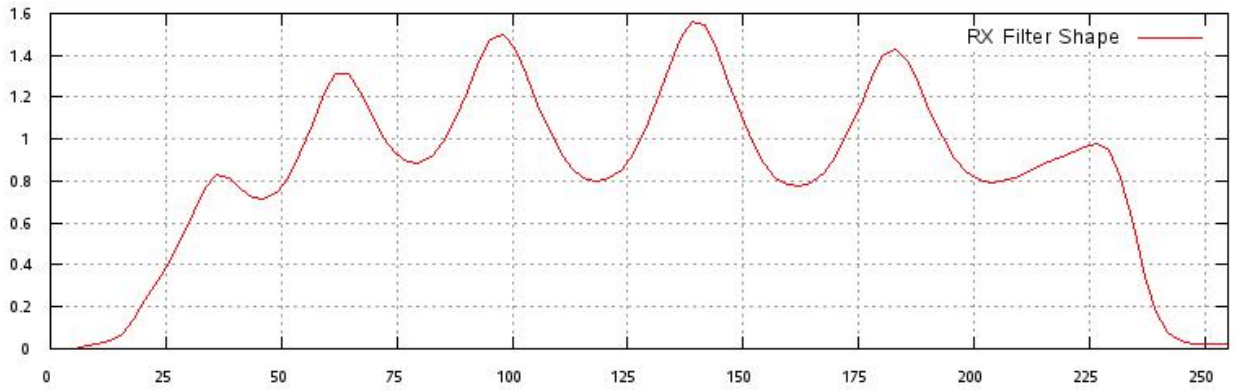
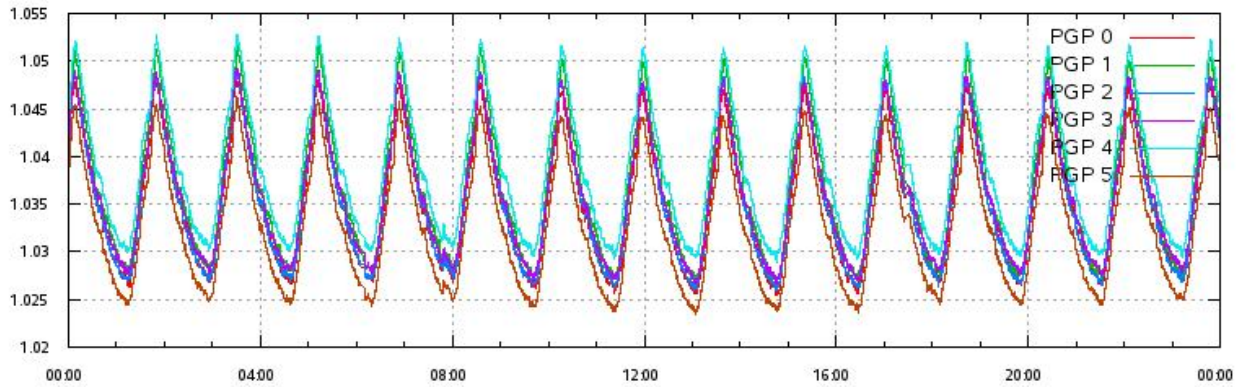
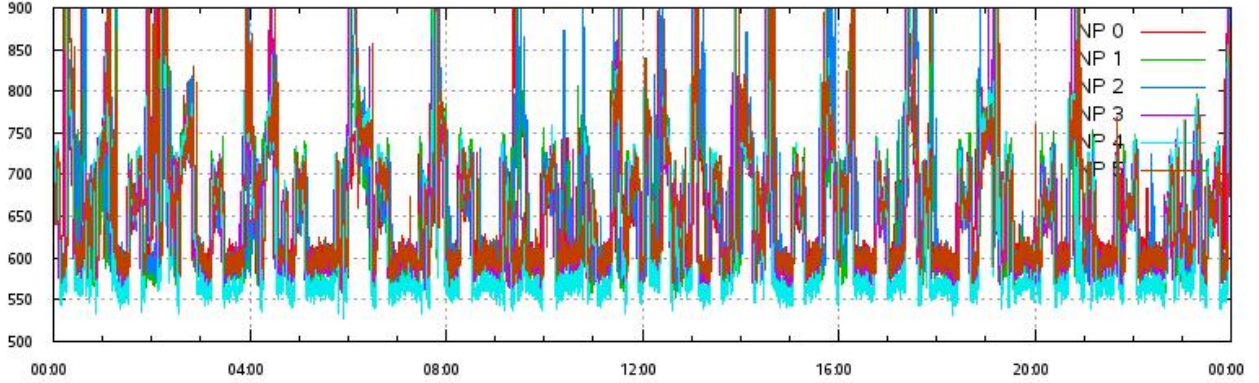
L1A Product

SFE & ANT Temperatures (raw) vs. UTC_LOCALISATION



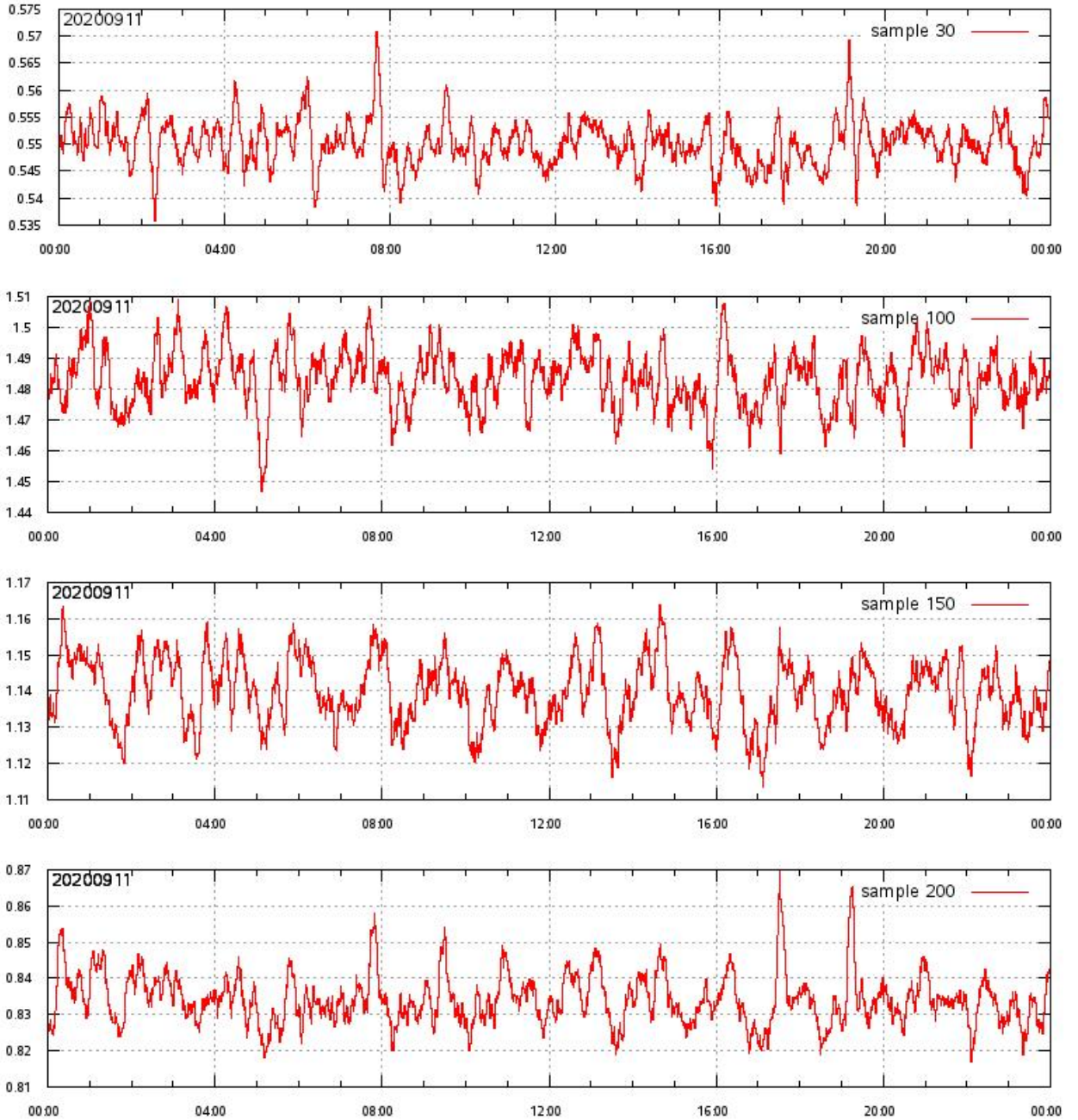
L1A Product

Noise Power & Power Gain Product per beam 0-5 vs. UTC_LOCALISATION
RX Filter Shape average over sample number
Noise Power threshold exceeded (TH=900) on map



L1A Product

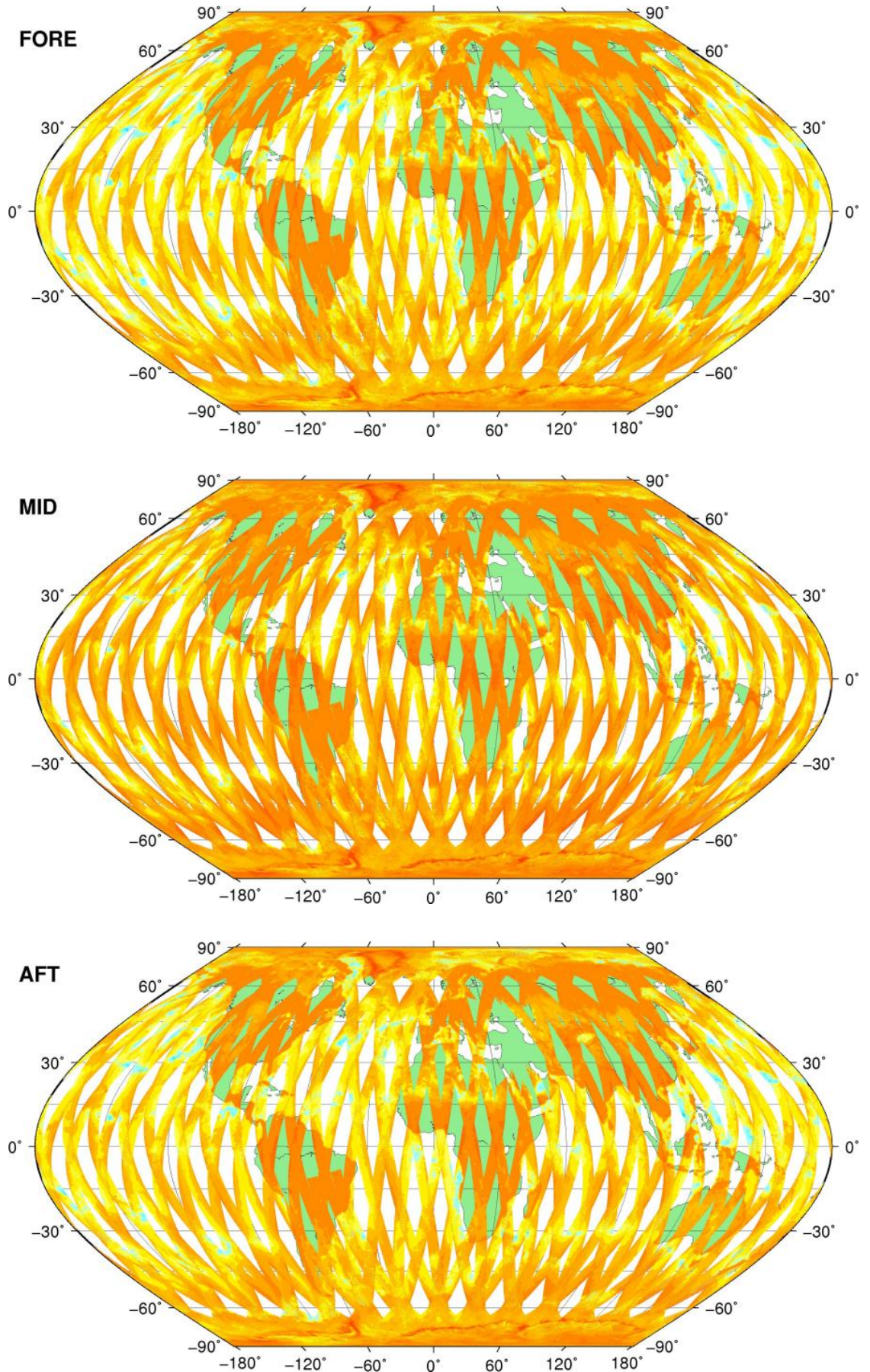
RX filter shape in detail for sample 30,100,150, 200 & max vs. UTC_LOCALISATION



SZO Product

Sigma0_TRIP Coverage map

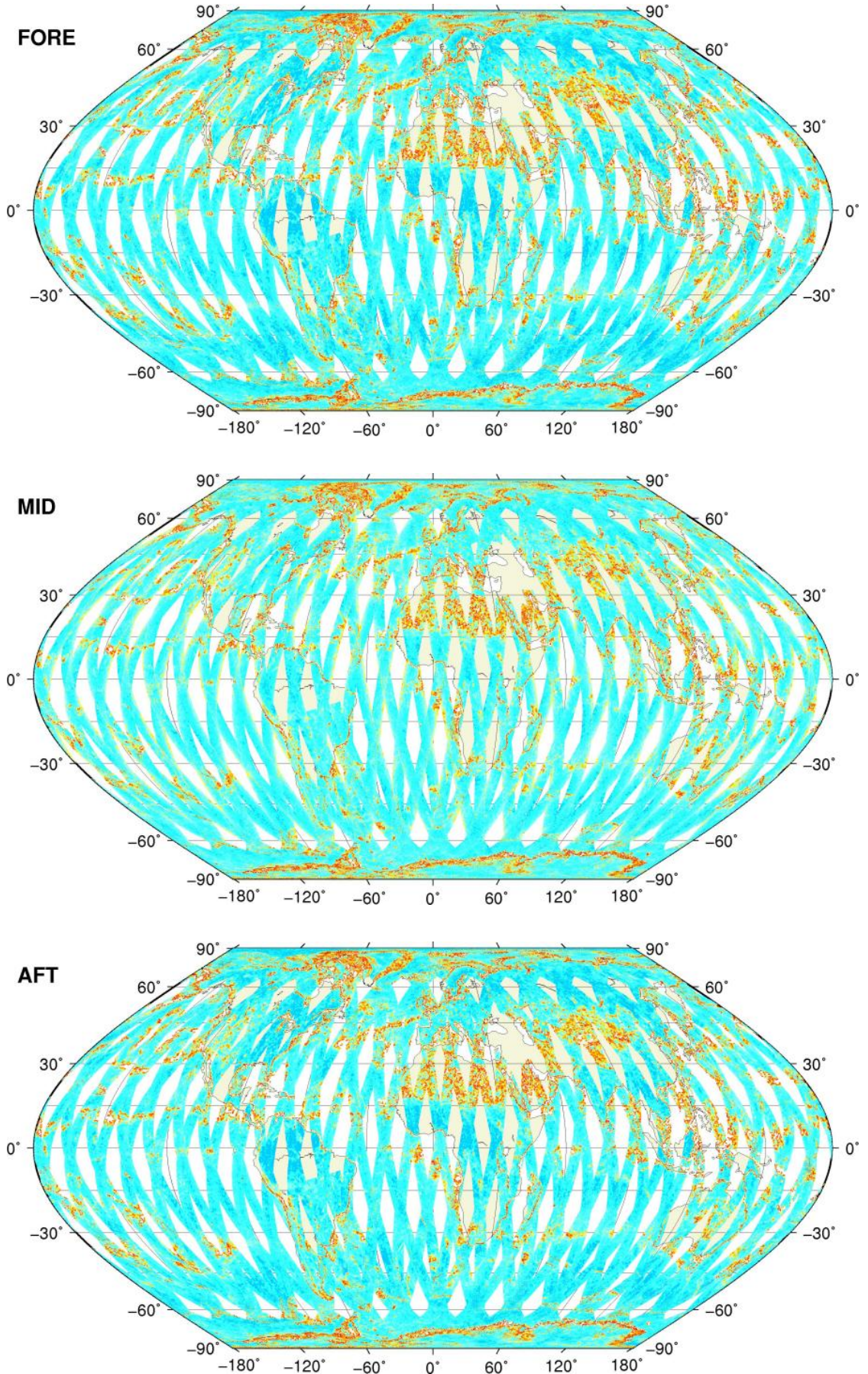
SIGMA0_TRIP Coverage



SZO Product

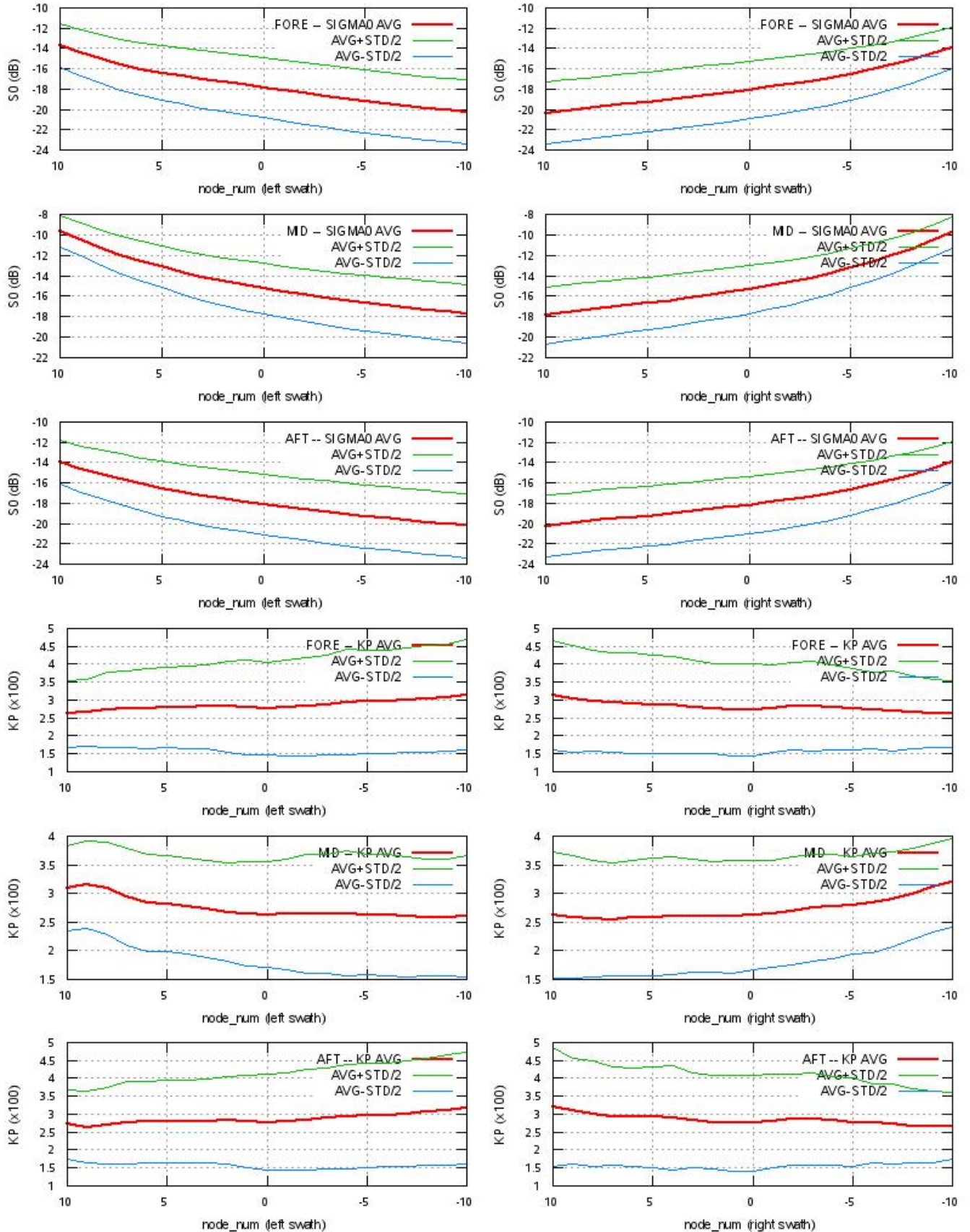
Kp Coverage map

Kp Coverage



SZO Product

S0 - Kp Statistics



SZO Product

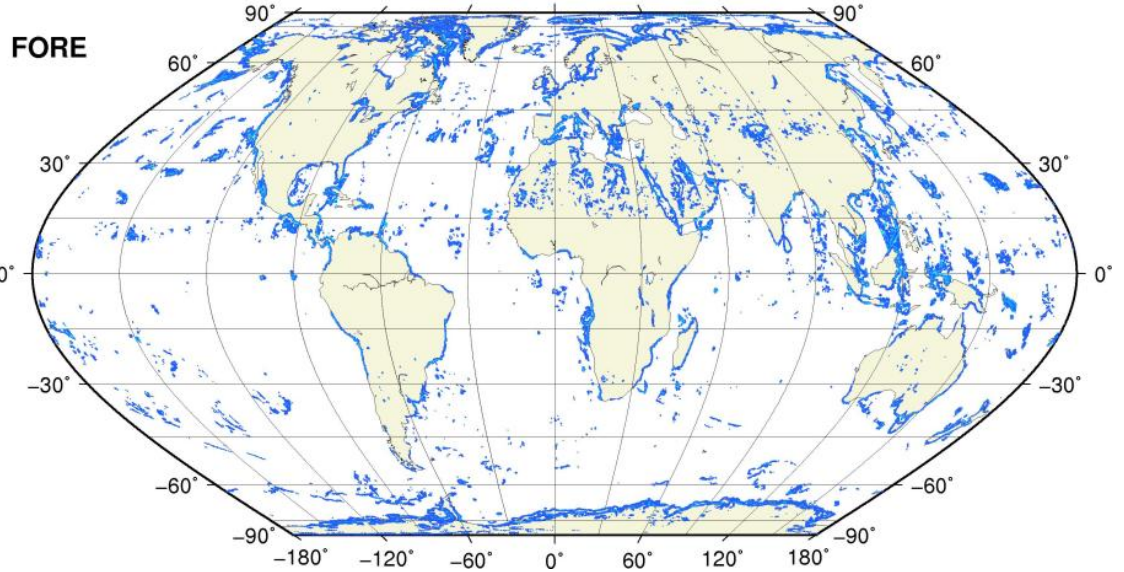
Kp Outliers on map

$0.06 < Kp < 1.0$

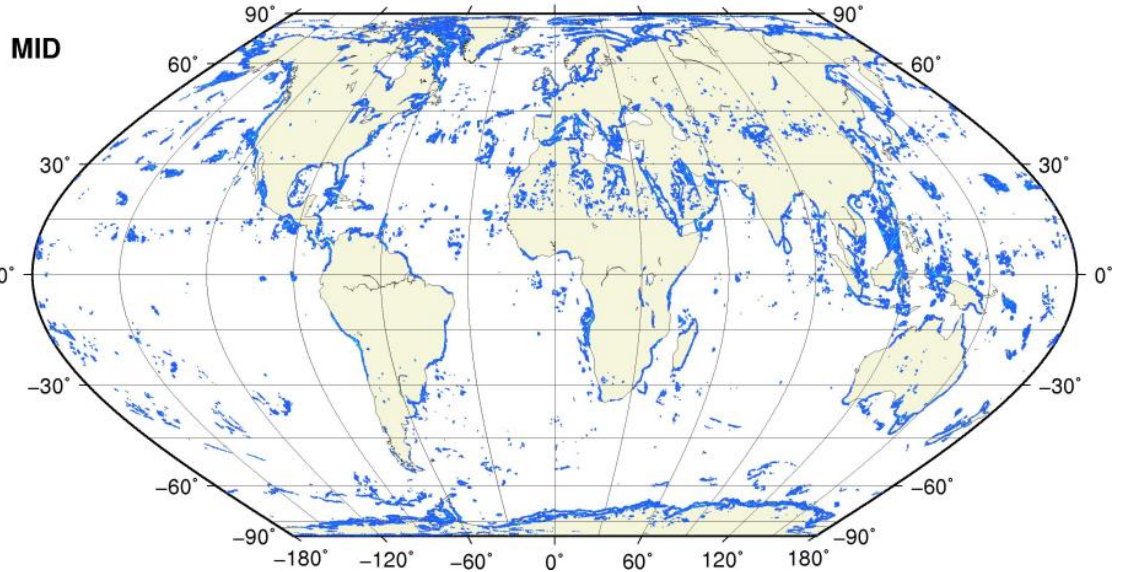
0.1 0.2 0.3 0.4 0.5 0.6 0.7 0.8 0.9 1.0



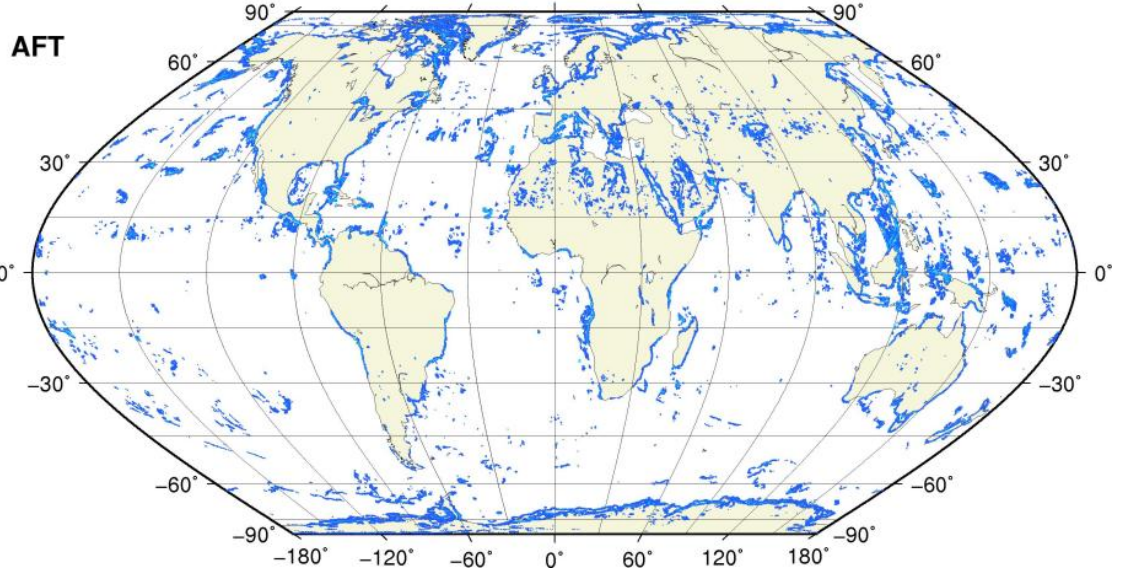
● KP = 1.0 #rec=0



● KP = 1.0 #rec=0



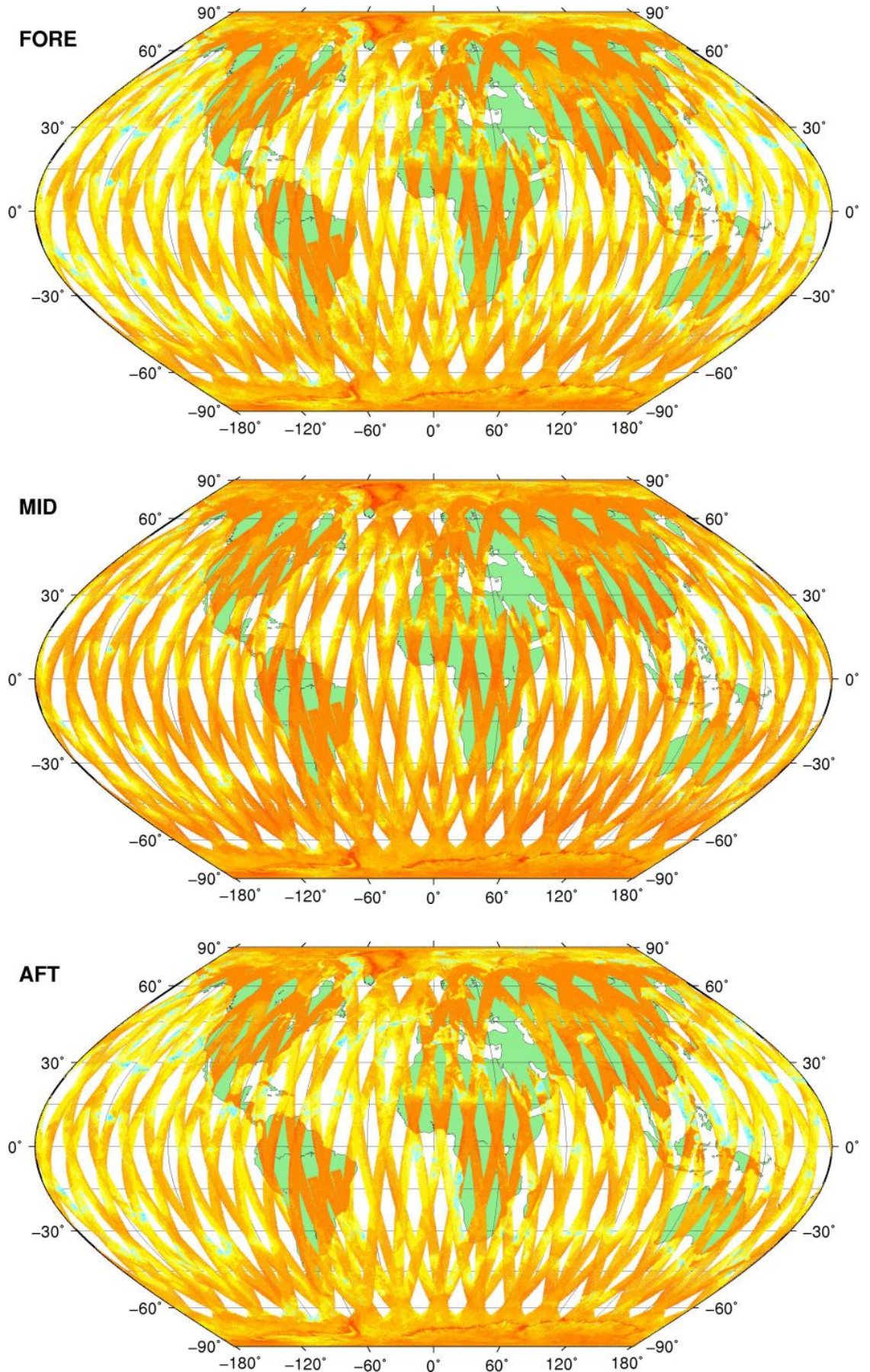
● KP = 1.0 #rec=0



SZR Product

Sigma0_TRIP Coverage map

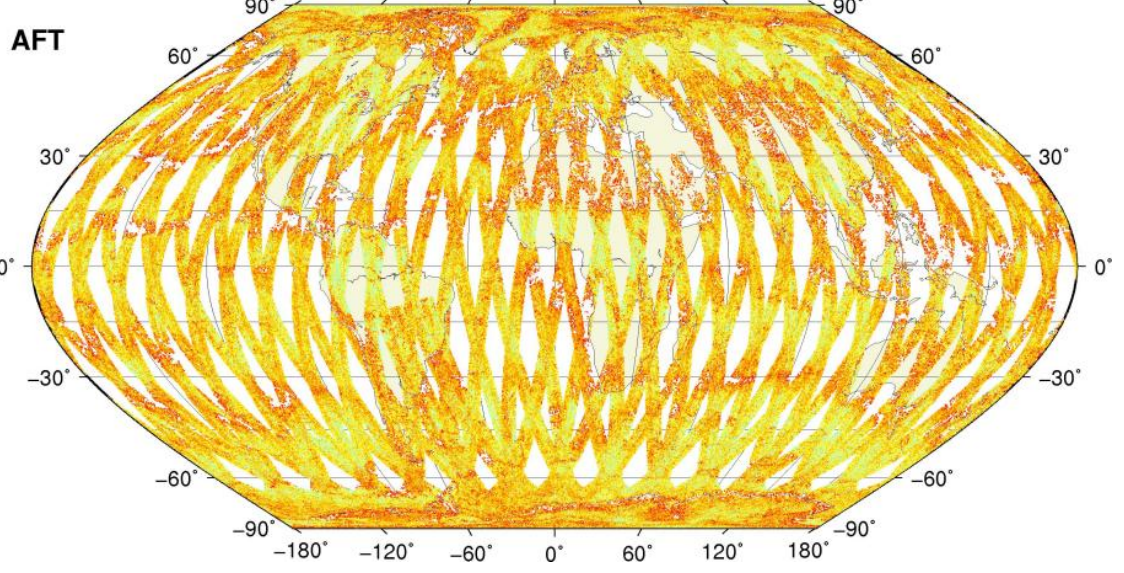
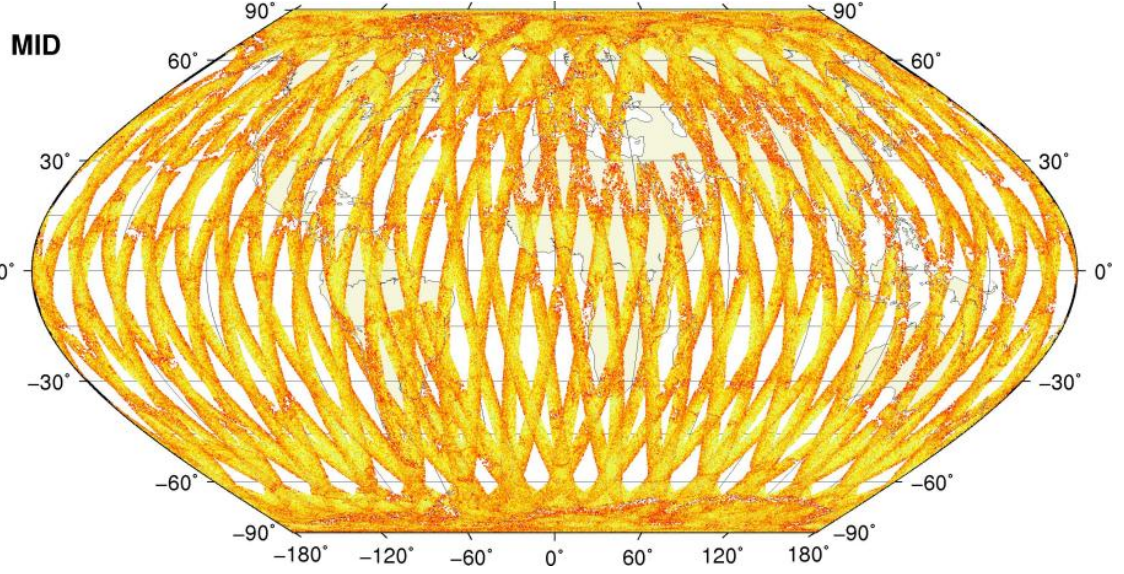
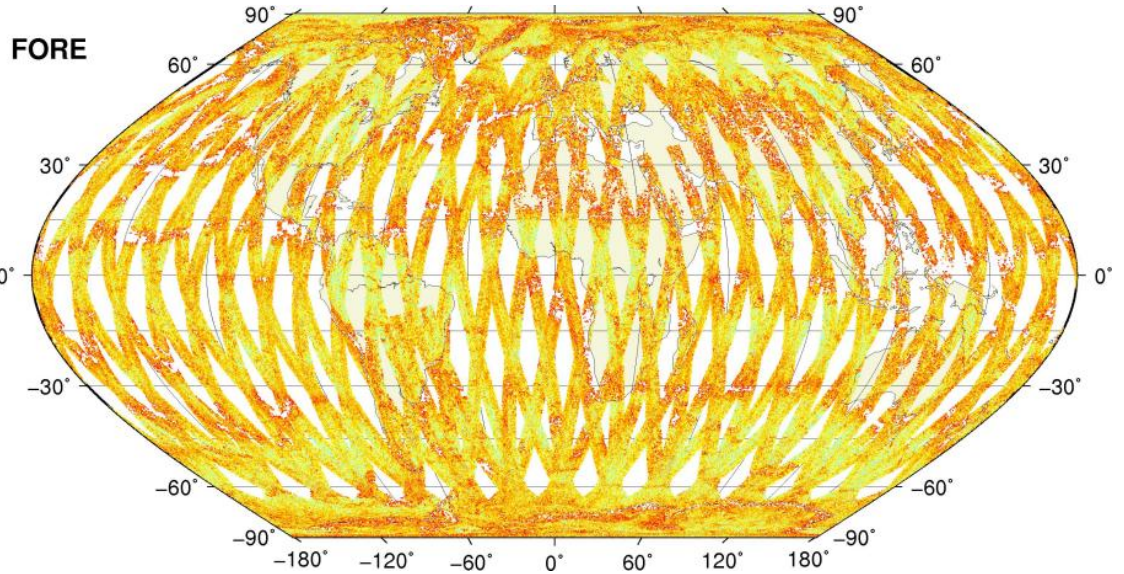
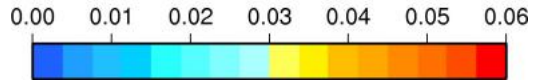
SIGMA0_TRIP Coverage



SZR Product

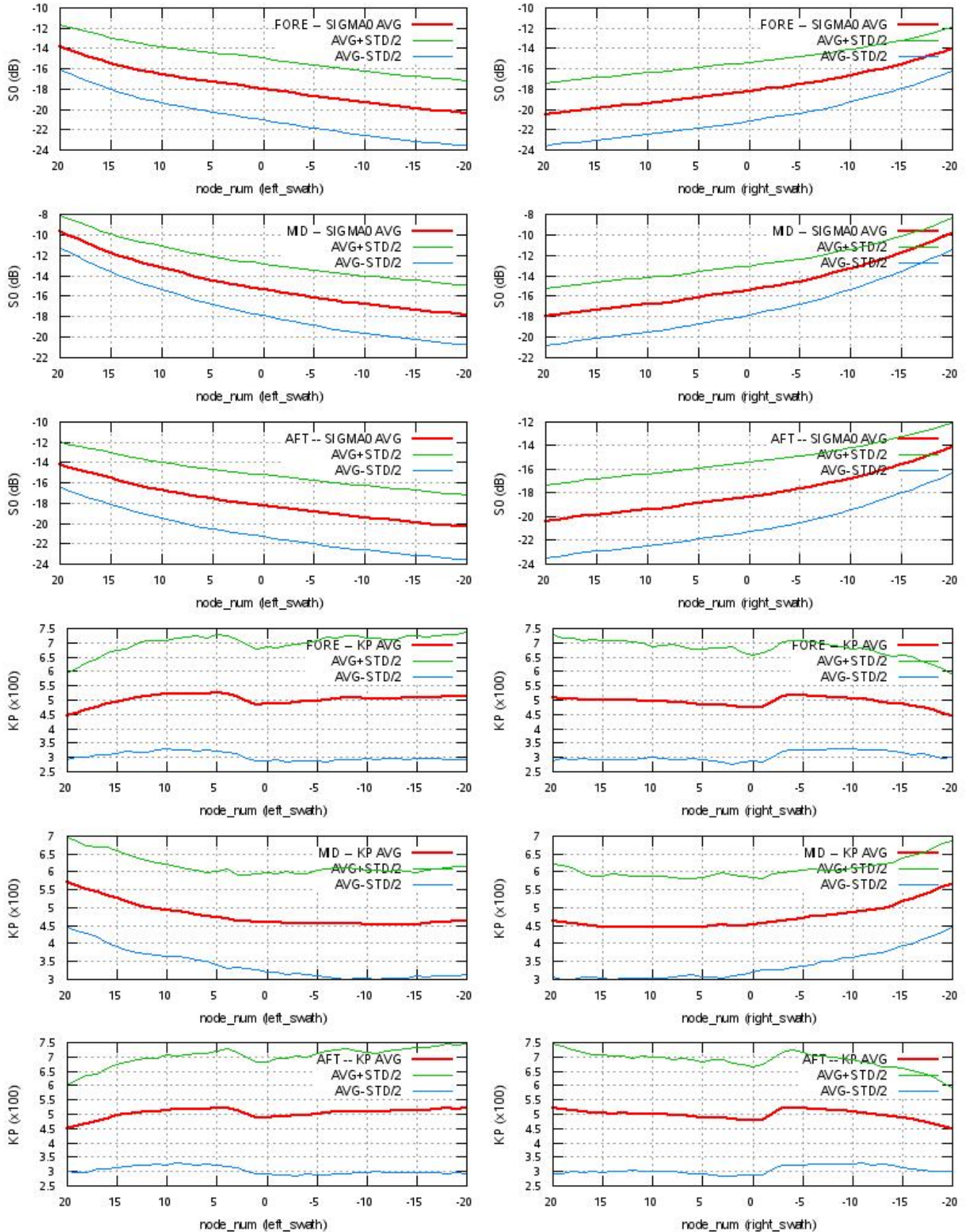
Kp Coverage map

Kp Coverage



SZR Product

S0 - Kp Statistics



SZR Product

Kp Outliers on map

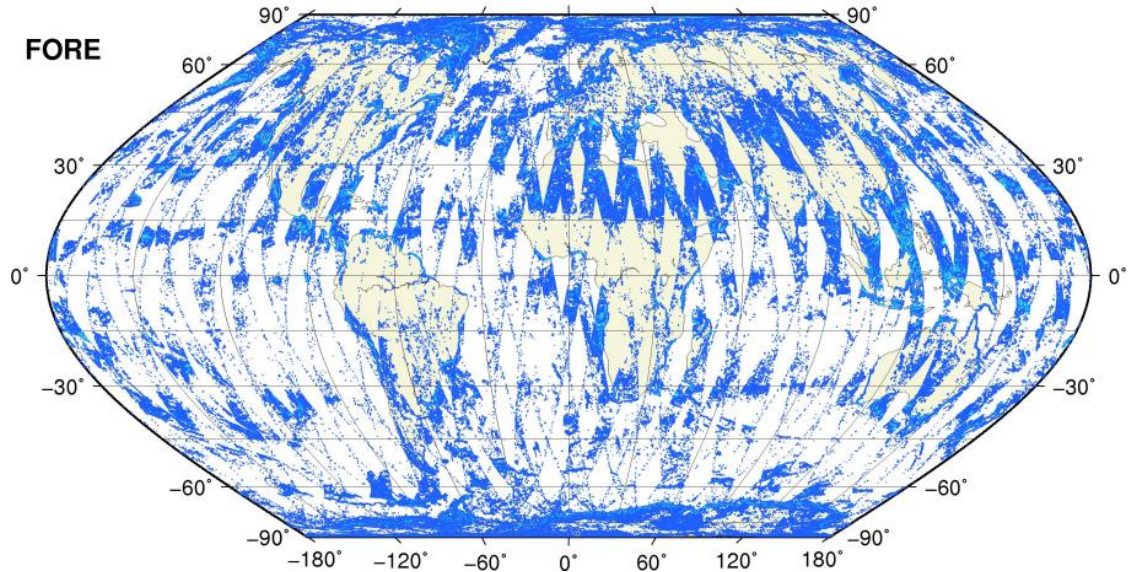
$0.06 < Kp < 1.0$

0.1 0.2 0.3 0.4 0.5 0.6 0.7 0.8 0.9 1.0

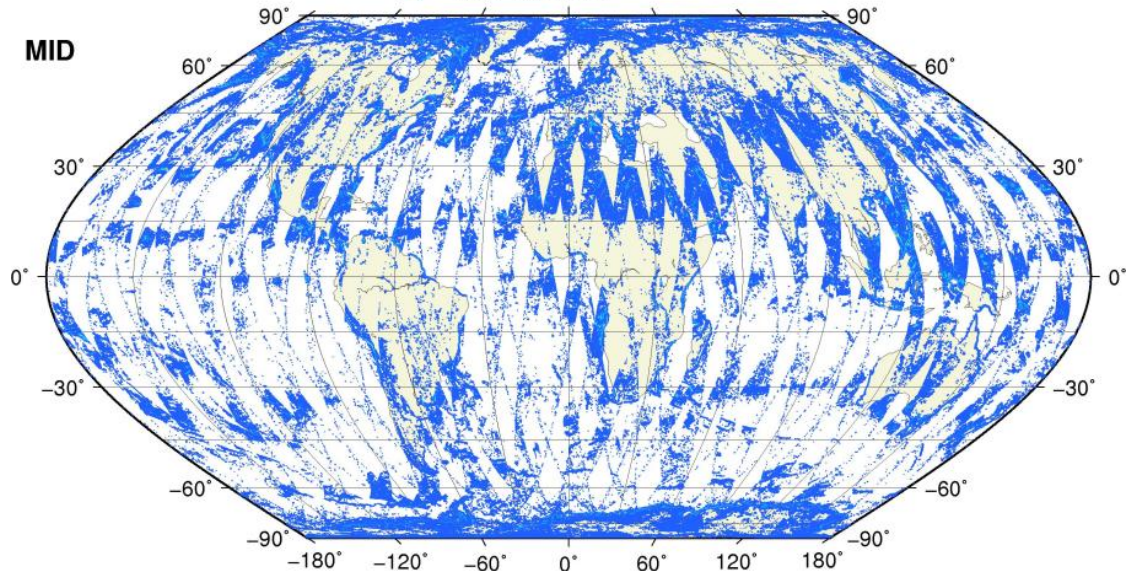


● KP = 1.0 #rec=0

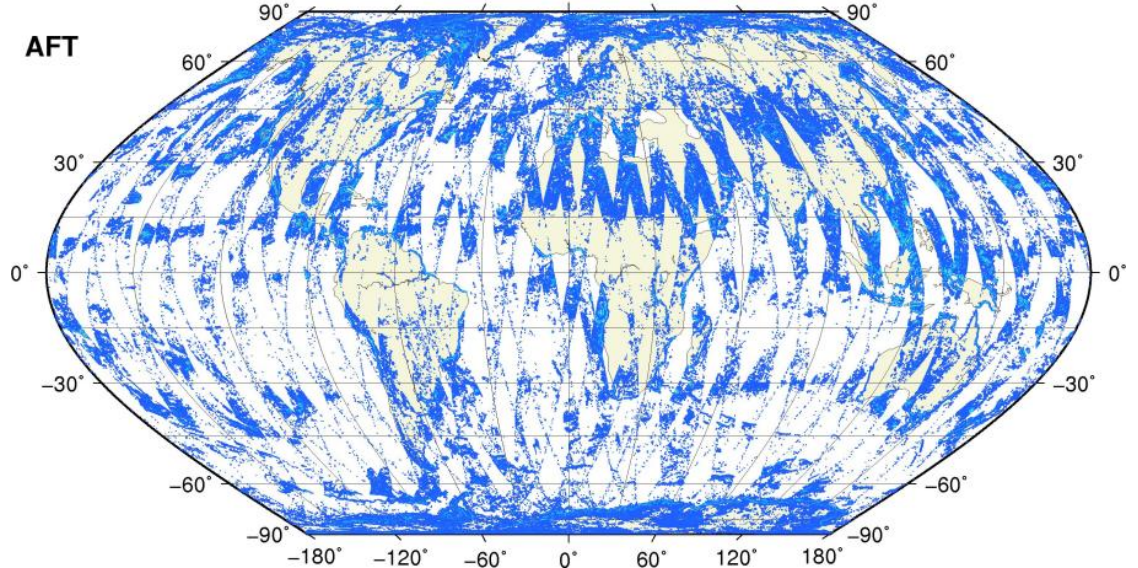
FORE



MID

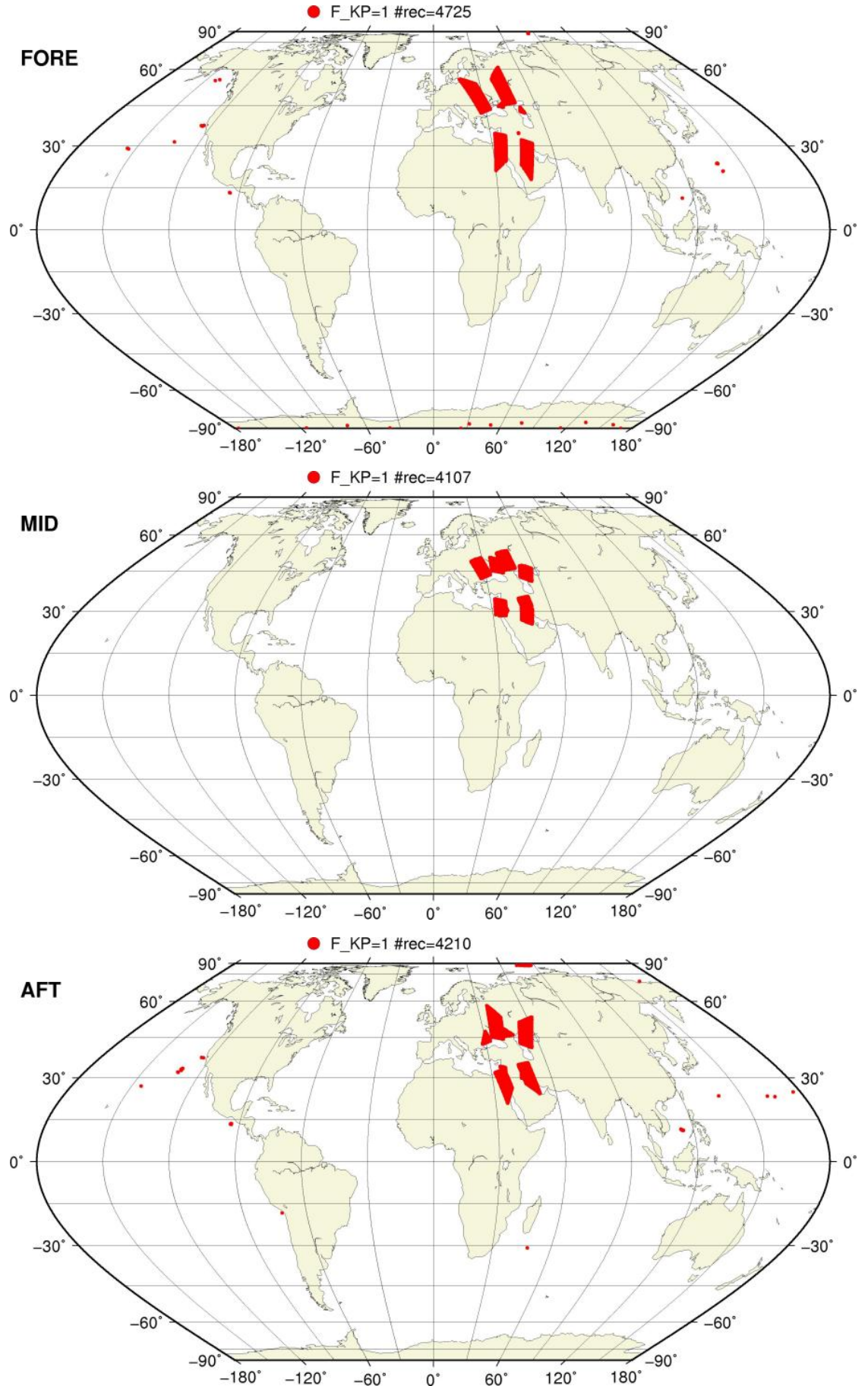


AFT



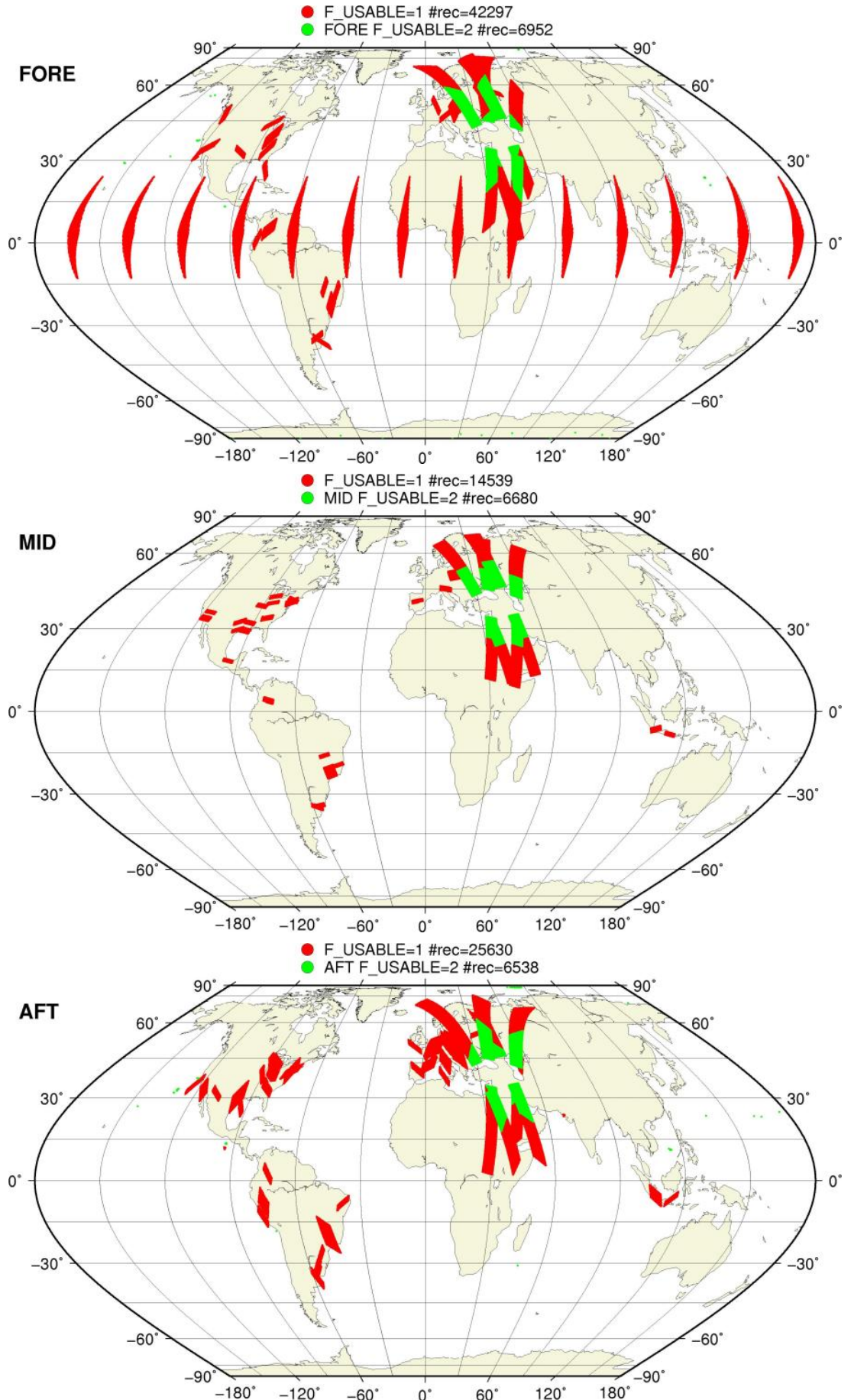
SZO Flagged Data Coverage

F_KP = 1 on map



SZO Flagged Data Coverage

F_USABLE = 1 or 2 on map



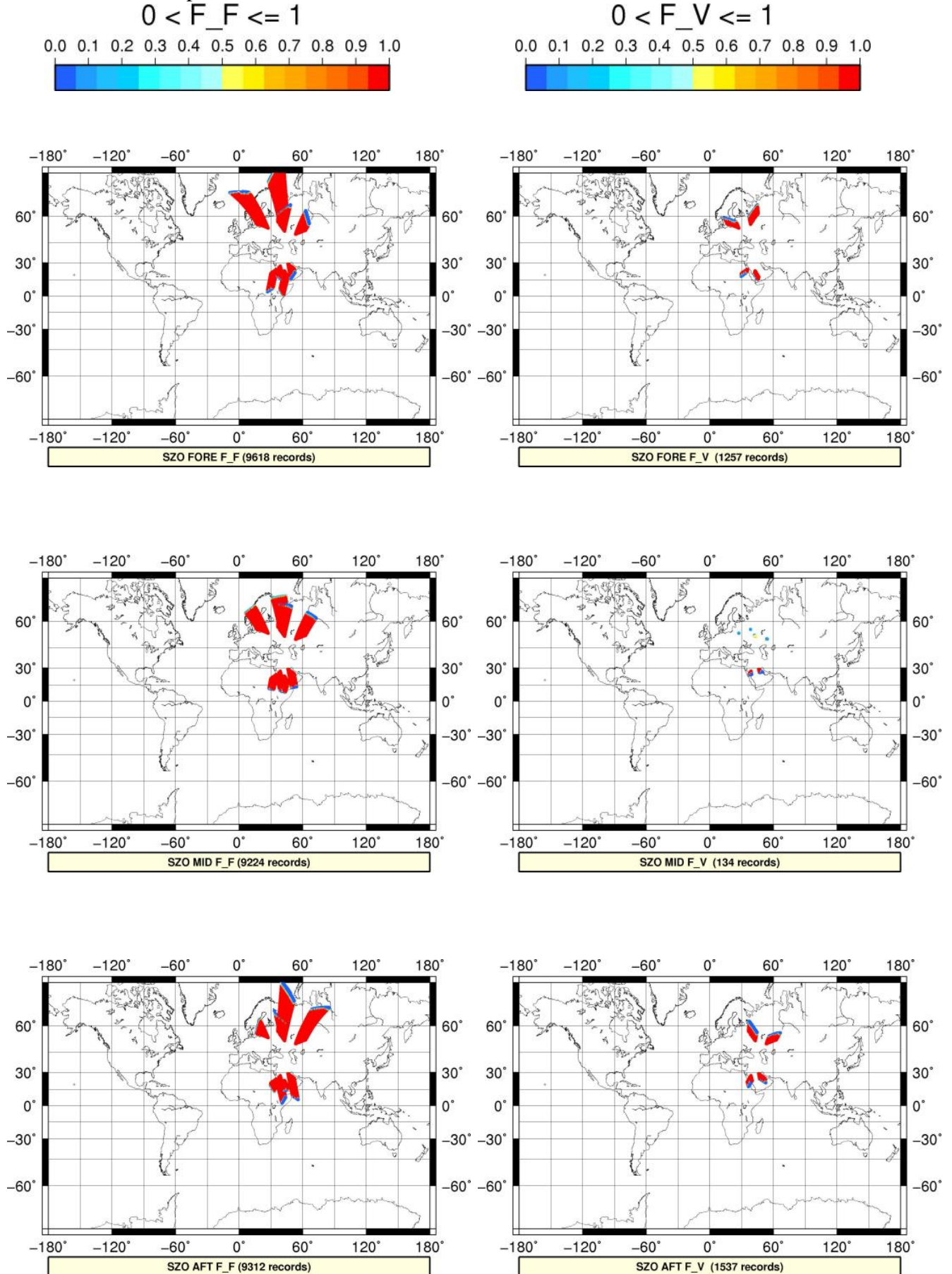
SZO Flagged Data Coverage

$0 < F_{OA} \leq 1$ on map



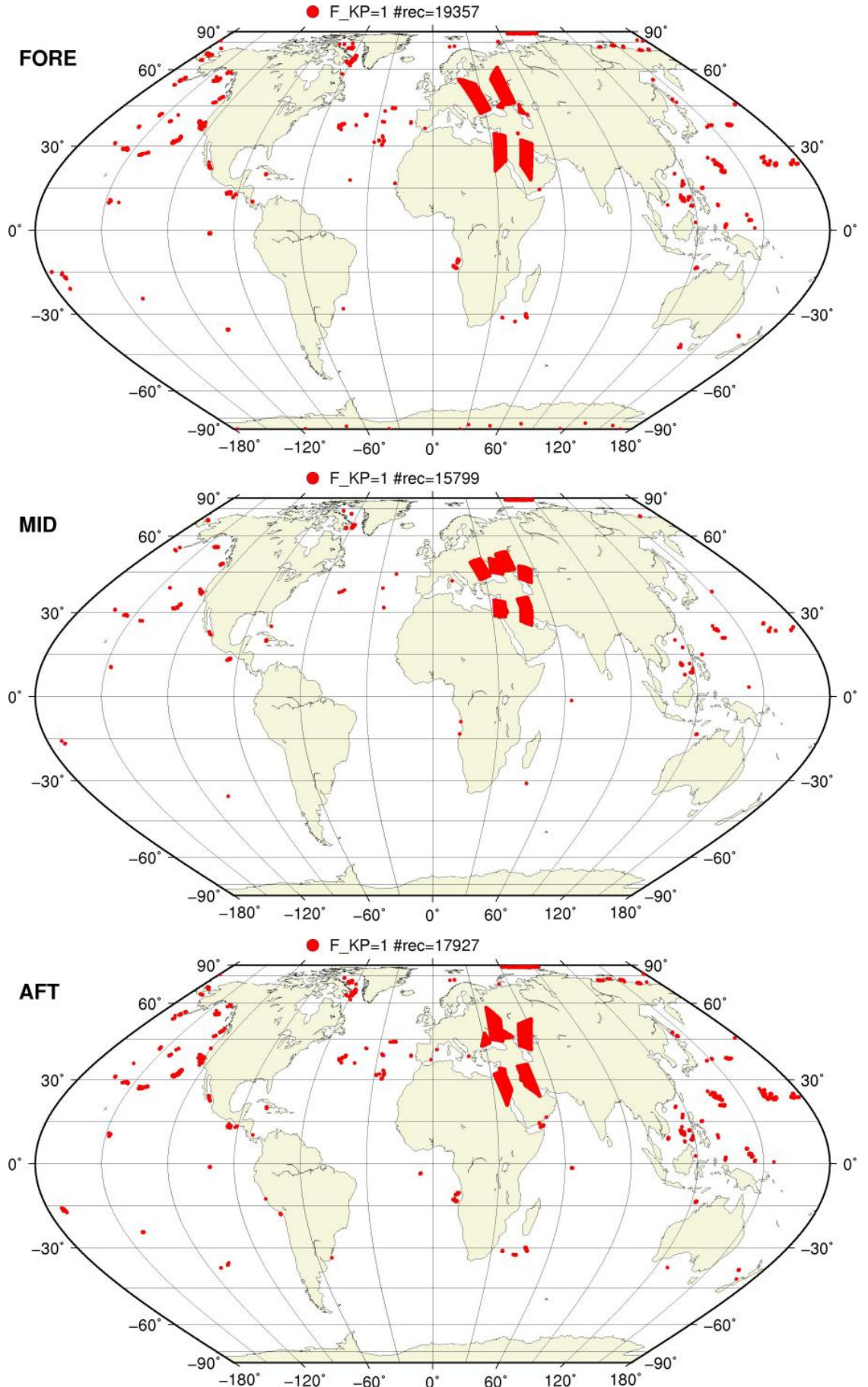
SZO Flagged Data Coverage

$0 < F_{F/V} \leq 1$ on map



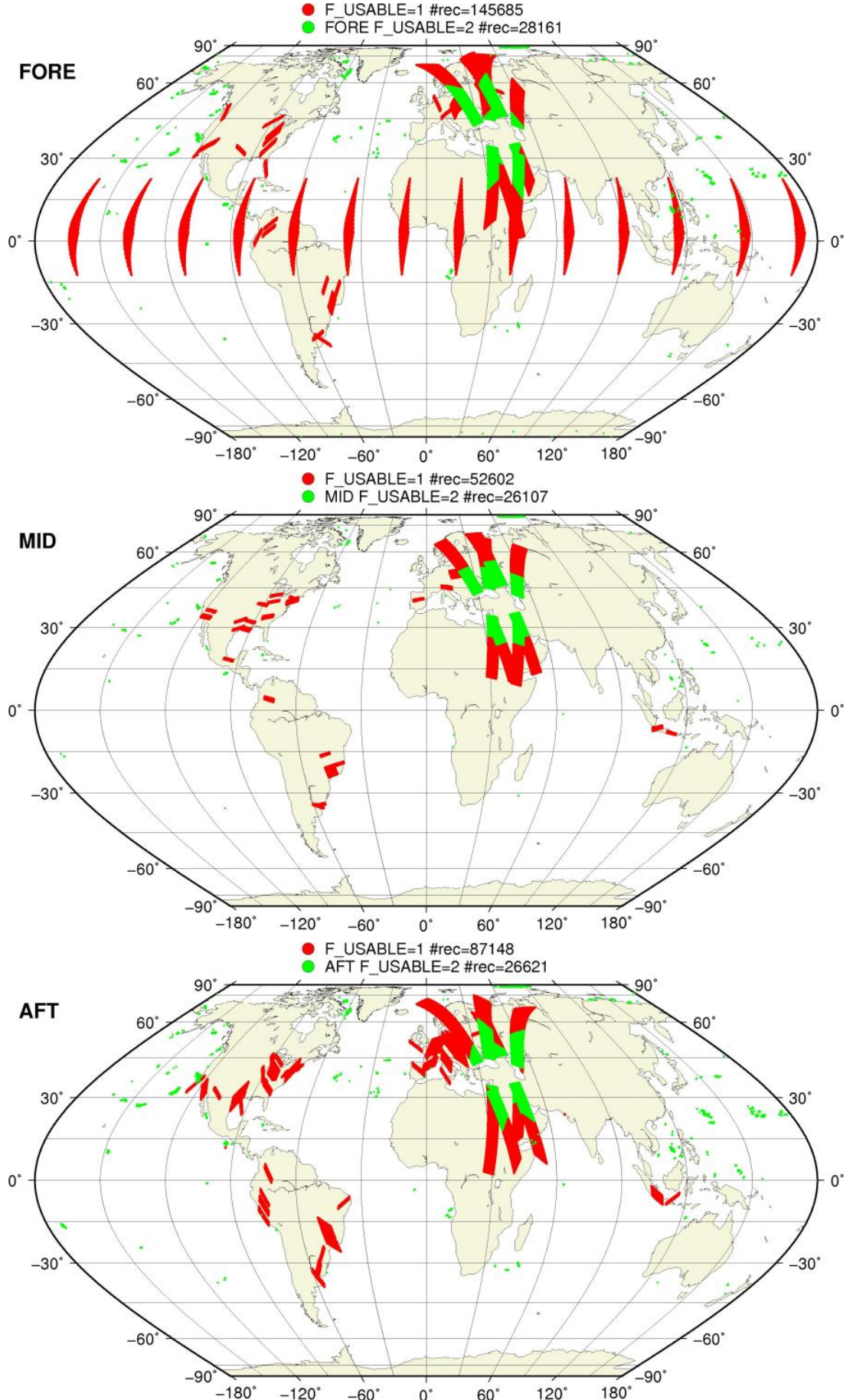
SZR Flagged Data Coverage

F_KP = 1 on map



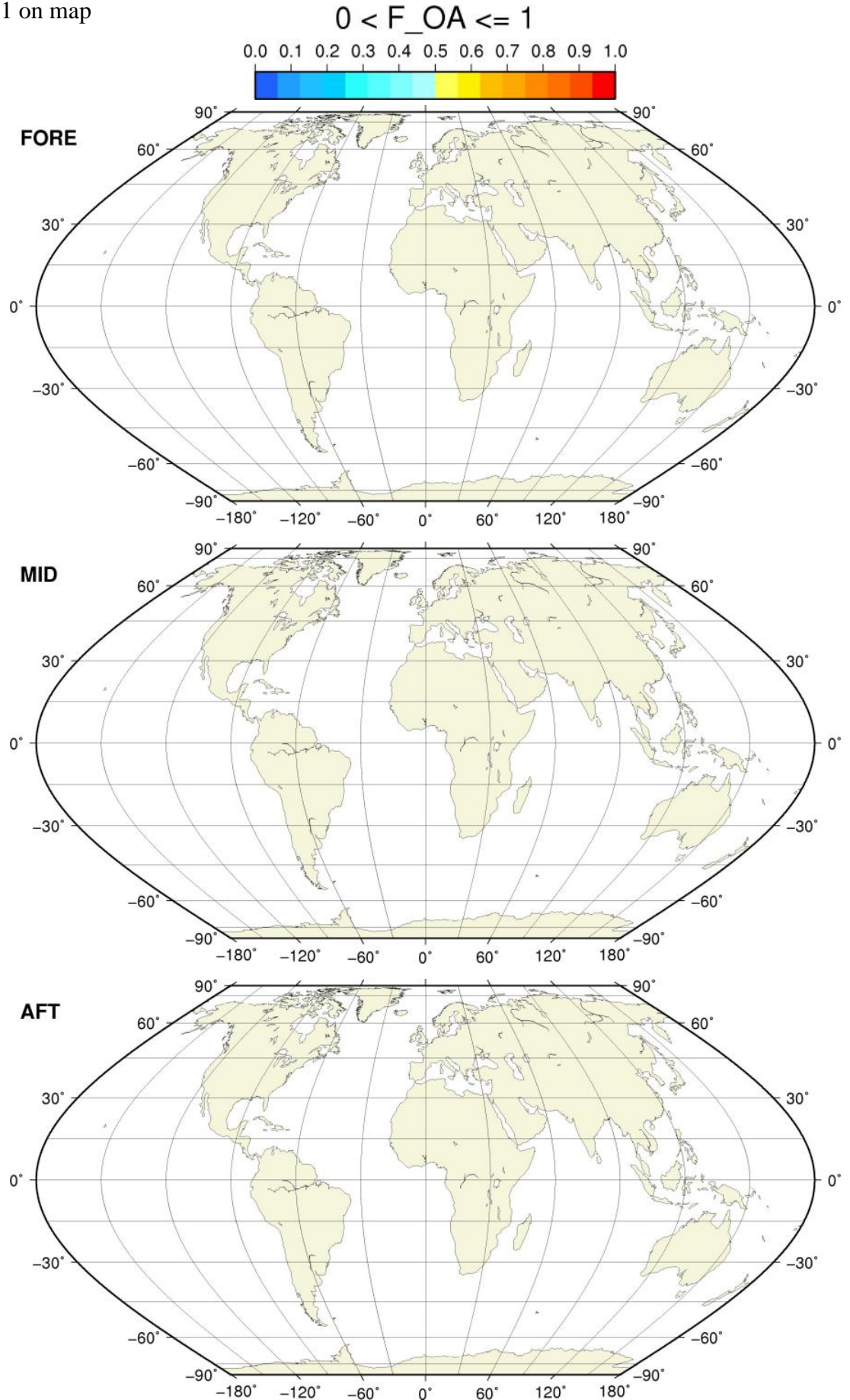
SZR Flagged Data Coverage

F_USABLE = 1 or 2 on map



SZR Flagged Data Coverage

$0 < F_{OA} \leq 1$ on map



SZR Flagged Data Coverage

0 < F_F/V <=1 on map

