

ASCAT DAILY Report

Metop-A

OPE

DAY 2020_094

20200403000000 - 20200403235959

DATA STATISTICS

BASED ON ORBITS (#14)

69817 69818 69819 69820 69821 69822 69823 69824 69825 69826 69827 69828 69829
69830 69831

DB STATISTICS : OPE M02_20200403

SMO	480	1.32	.54	.73	4.84
SMR	480	3.27	1.22	2.17	9.00
SZF	463	.48	1.60	.07	22.28
xxx	479	11.56	5.46	.63	33.01

INGATE (STORE) STATISTICS : OPE M02_20200403

xxx_1A	/fbf/tcdras/store/gsl/ASCA_xxx_1A_M02	-- number of files (xxx_1A) : 480
SZO_1B	/fbf/tcdras/store/gsl/ASCA_SZO_1B_M02	-- number of files (SZO_1B) : 480
SZR_1B	/fbf/tcdras/store/gsl/ASCA_SZR_1B_M02	-- number of files (SZR_1B) : 480
SZF_1B	/fbf/tcdras/store/gsl/ASCA_SZF_1B_M02	-- number of files (SZF_1B) : 480
SMO_02	/fbf/tcdras/store/gsl/ASCA_SMO_02_M02	-- number of files (SMO_02) : 480
SMR_02	/fbf/tcdras/store/gsl/ASCA_SMR_02_M02	-- number of files (SMR_02) : 480

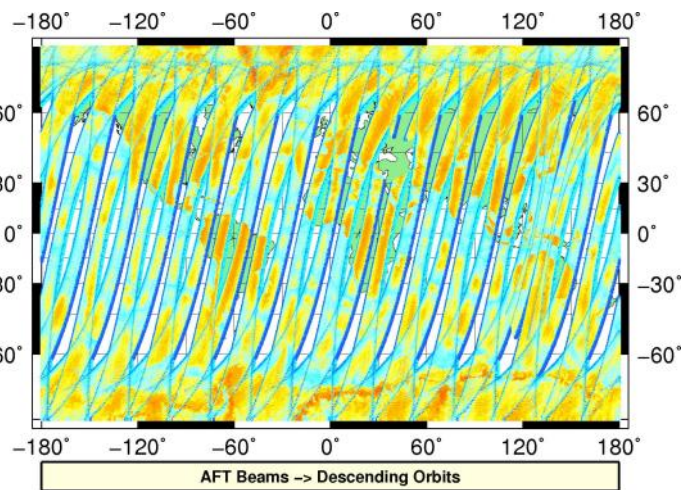
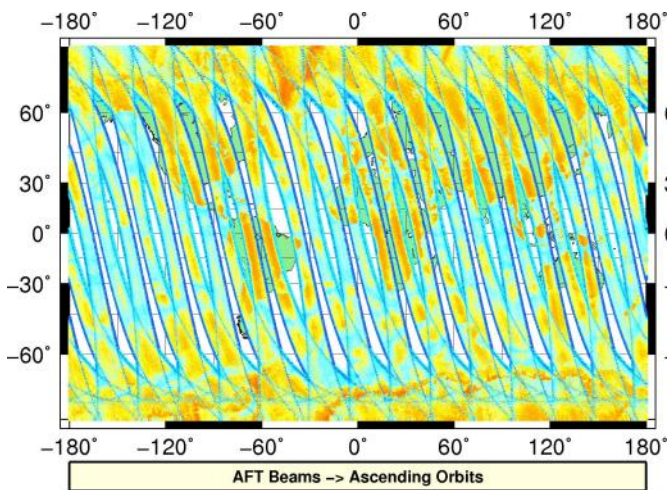
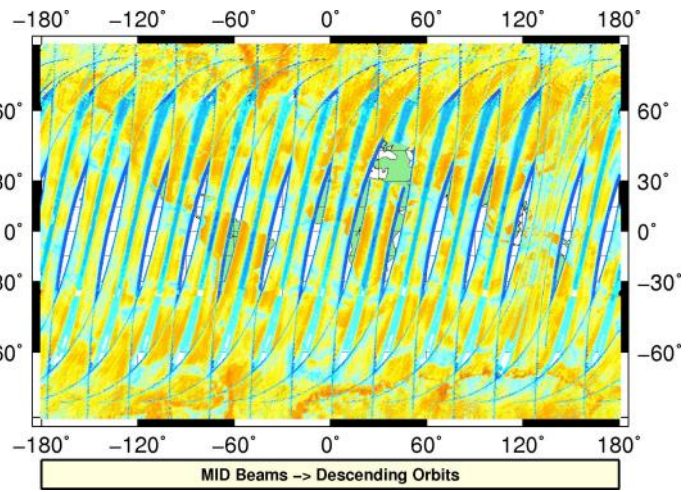
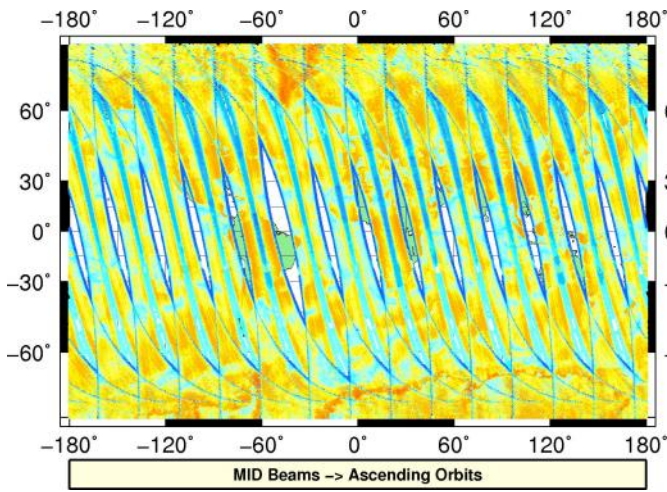
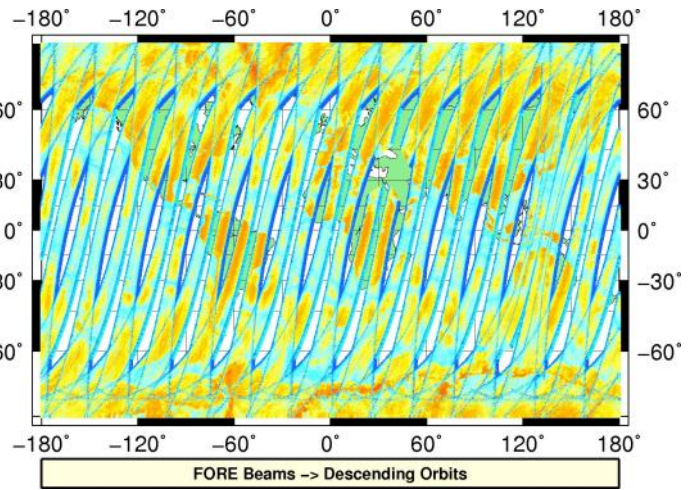
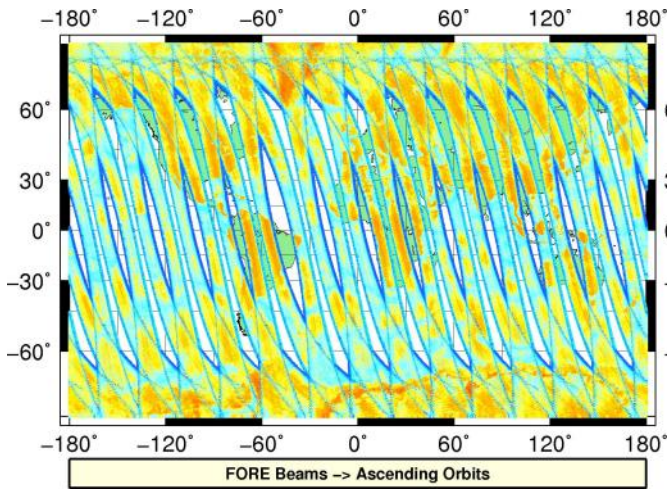
Overview

Configuration and SPHR content

Parameter	Value
SENSING START-STOP	20200403000000 - 20200403235959
ORBIT START-STOP	-
SATELLITE	M02
SW - DPU Version	3.9 (57)
SW - ICU Version	2.03 (35)
PARAM - Drive Level ID	0 (Nominal drive level as defined in the active DPU Data Set)
PARAM - DPU Data Set ID	4
PARAM - Revision ID	0
INST - Table Set ID	0 (no calibration, nominal table set used)
INST - Redundancy Config	127
	nominal ICU
	nominal DPU
	nominal RFU
	nominal HPA
	nominal SFE
	nominal SFE LNA
	nominal signal path (from HPA_B)
N_L1A_MDR	606678
N_L1A_MDR_B0	101113
N_L1A_MDR_B1	101113
N_L1A_MDR_B2	101113
N_L1A_MDR_B3	101113
N_L1A_MDR_B4	101113
N_L1A_MDR_B5	101113
N_GAPS	24
TOTAL_GAPS_SIZE	8351488
N_HKTM_PACKETS_RECEIVED	16127
N_F_NOISE	0
N_F_PG	0
N_V_PG	0
N_F_FILTER	0
N_V_FILTER	0
N_F_PGP	0
N_F_NP	0
N_F_ORBIT	0
N_F_ATTITUDE	0
N_F_OMEGA	0
N_F_MAN	0
N_F_OSV	0
N_F_E_TEL_PRES	0
N_F_E_TEL_IR	0
N_F_CE	0
N_V_CE	0
N_F_OA	0
N_F_TEL	0
N_F_REF	0
N_F_SA	1087615
N_F_LAND	49135931
N_F_GEO	3257833
N_F_SIGN	0
N_L1B_MDR	0
N_EMPTY_S0_TRIP	0
N_L1B_MDR_F	0
N_EMPTY_S0_TRIP_F	0
N_L1B_MDR_M	0

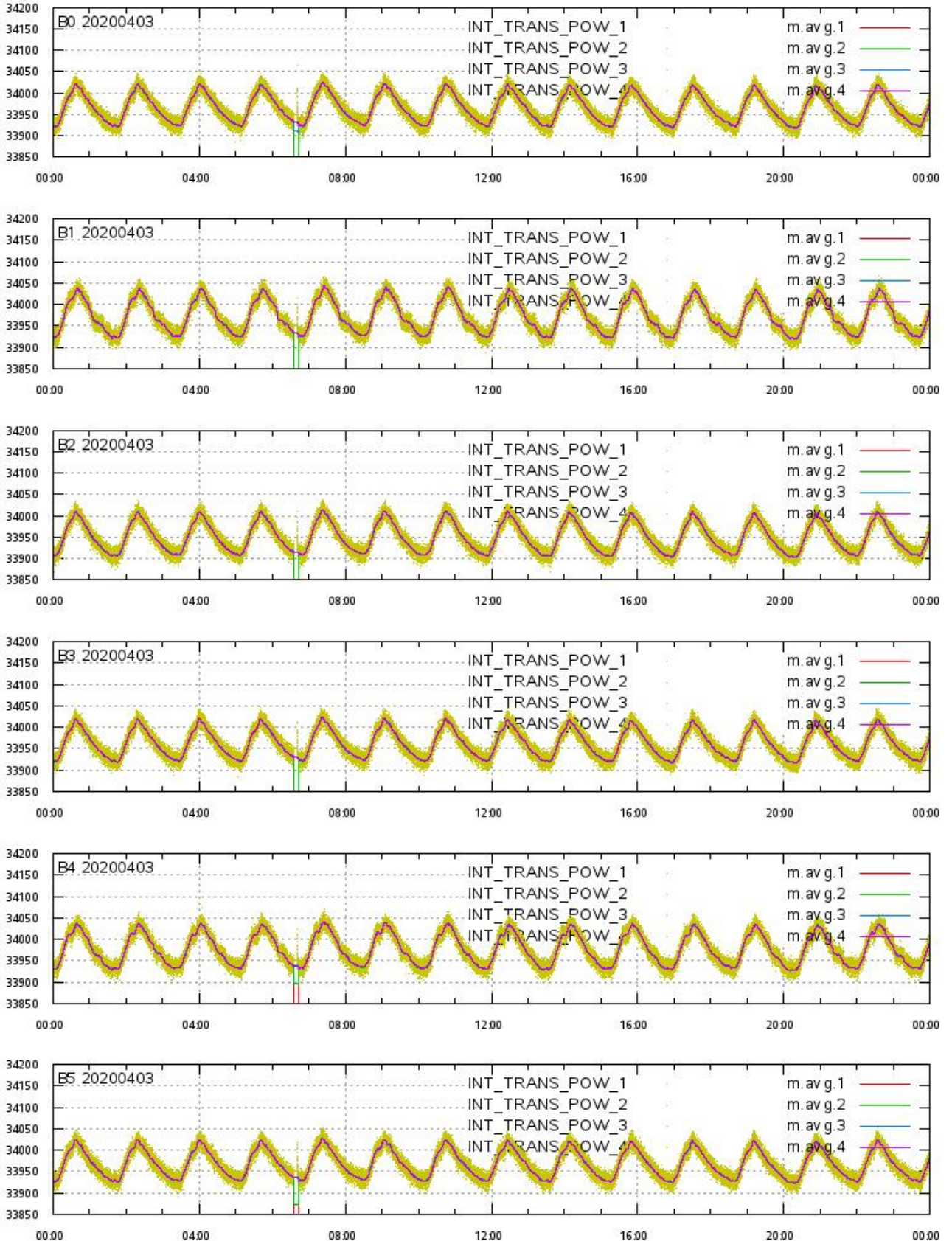
L1A Product

Echo Data Coverage maps



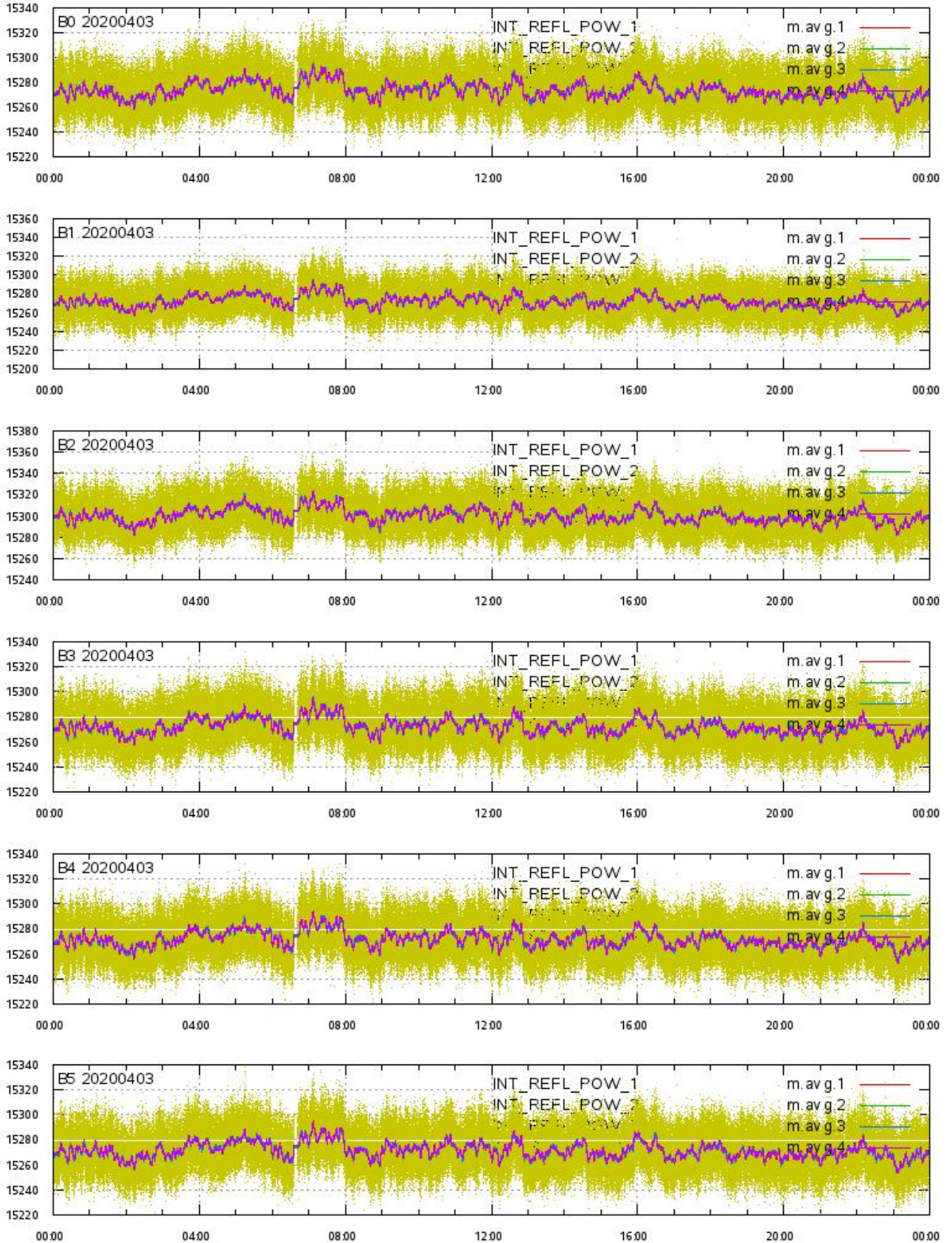
L1A Product

Integrated Transmitted Powers 1-4 per beam 0-5 vs. UTC_LOCALISATION



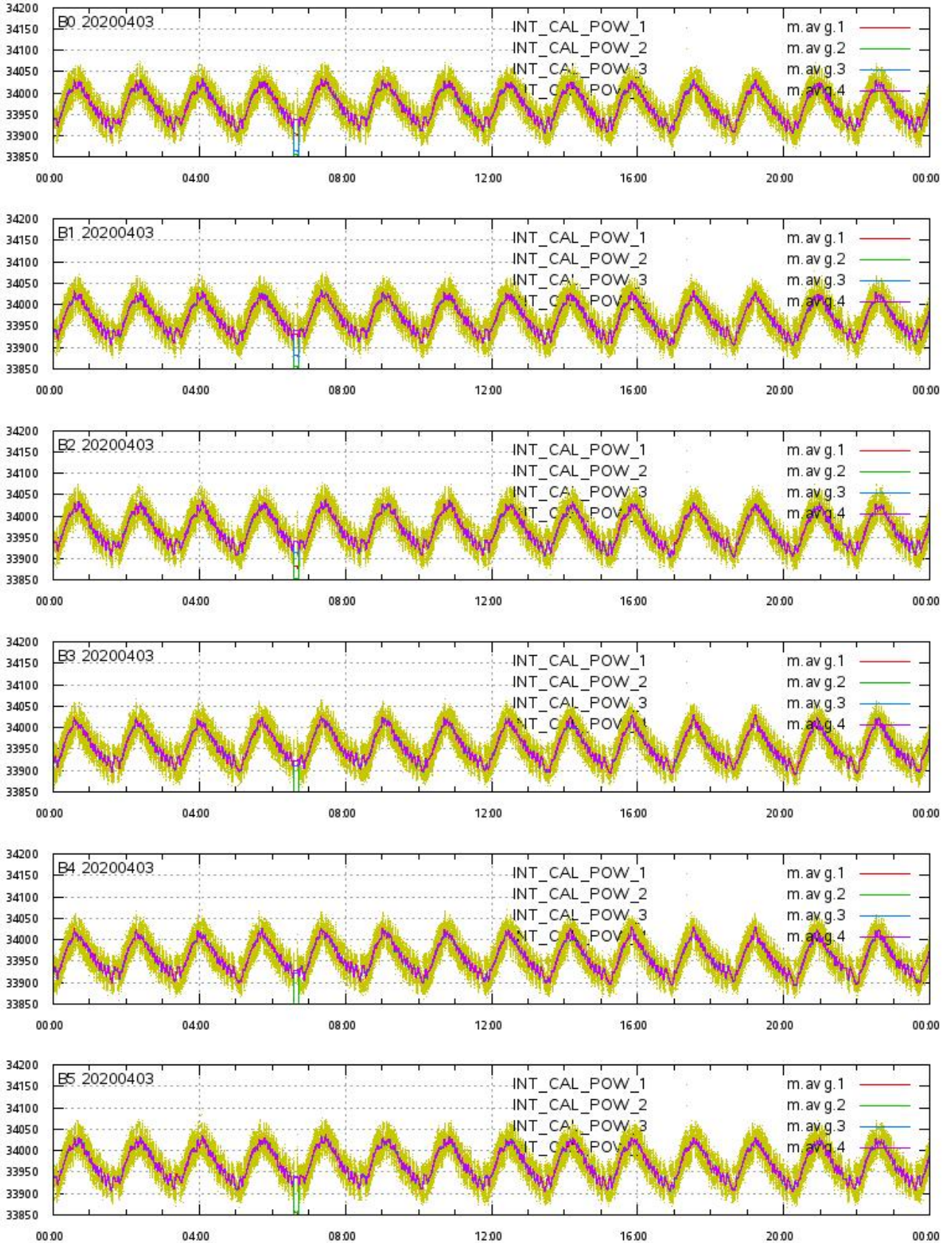
L1A Product

Integrated Reflected Powers 1-4 per beam 0-5 vs. UTC_LOCALISATION



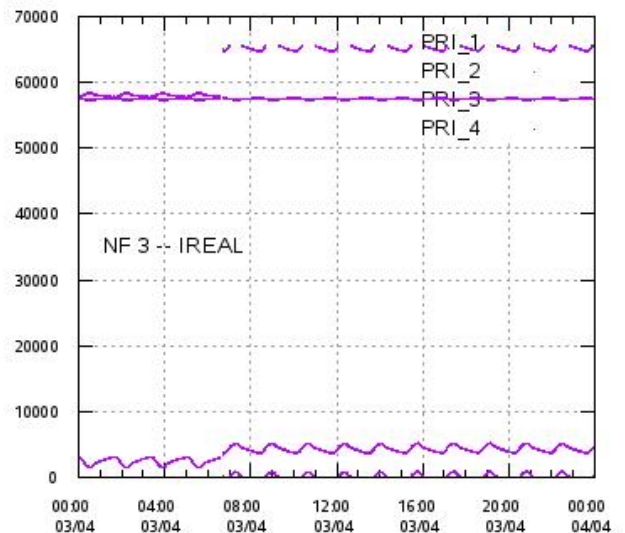
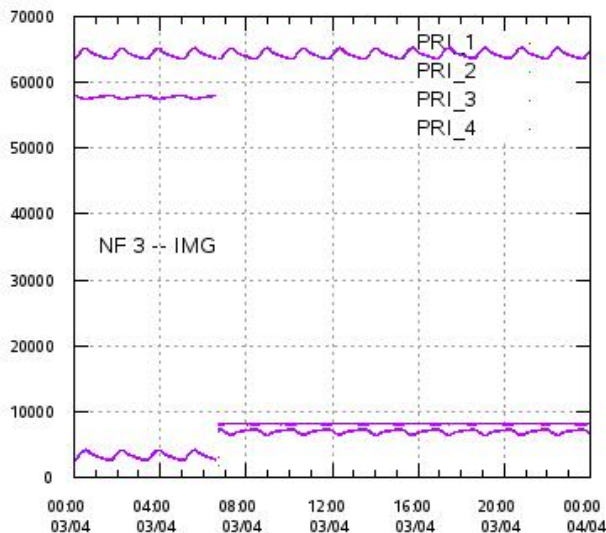
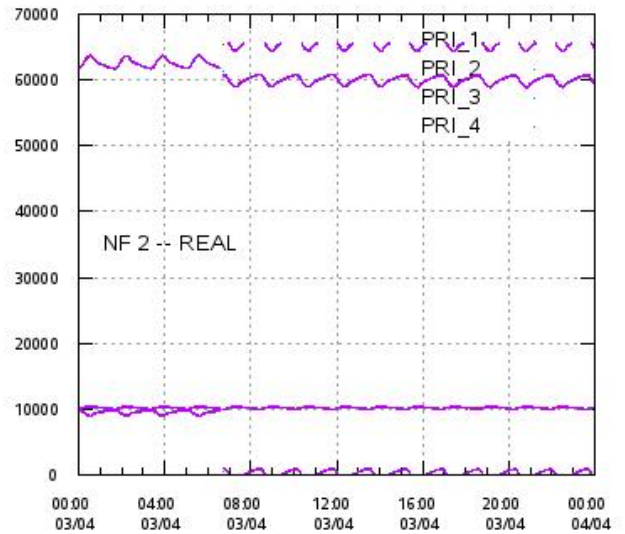
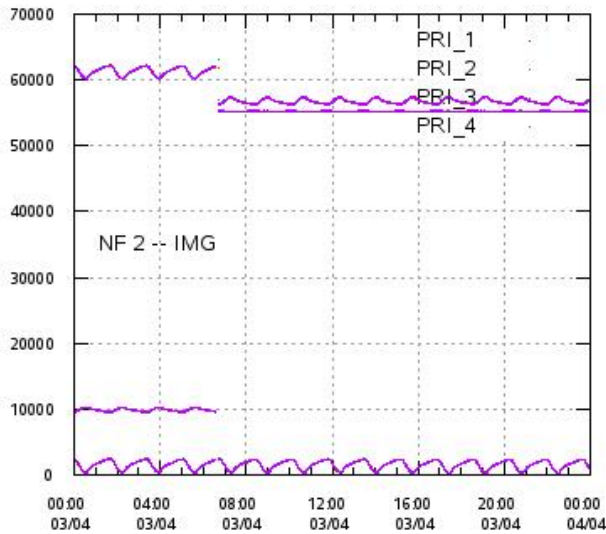
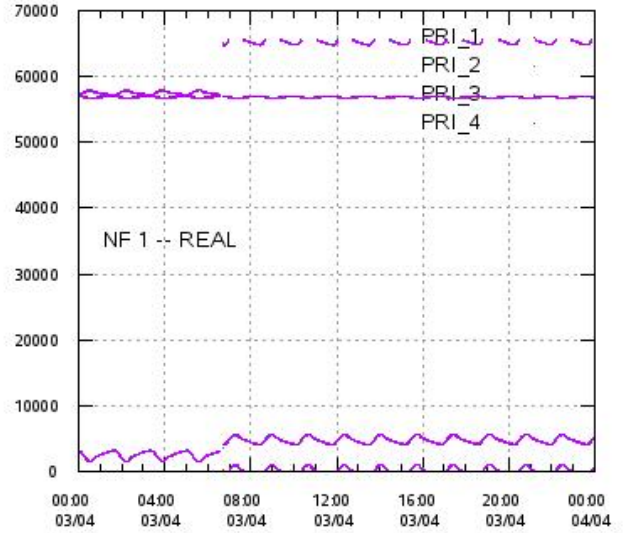
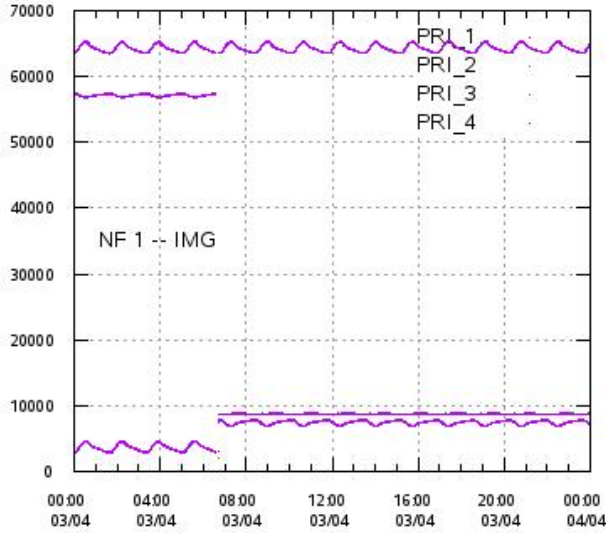
L1A Product

Integrated Calibration Powers 1-4 per beam 0-5 vs. UTC_LOCALISATION



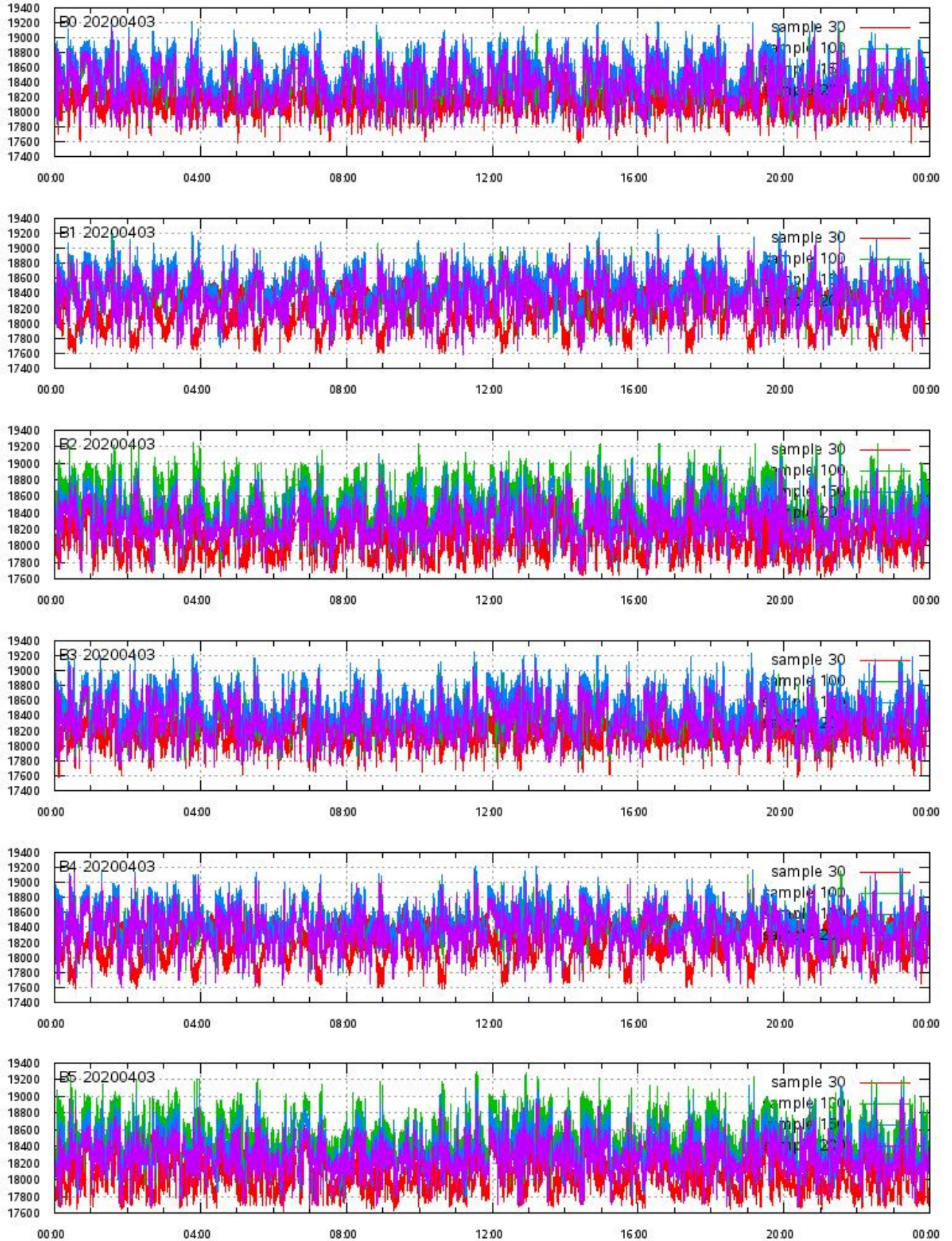
L1A Product

Calibration Powers vs. UTC_LOCALISATION



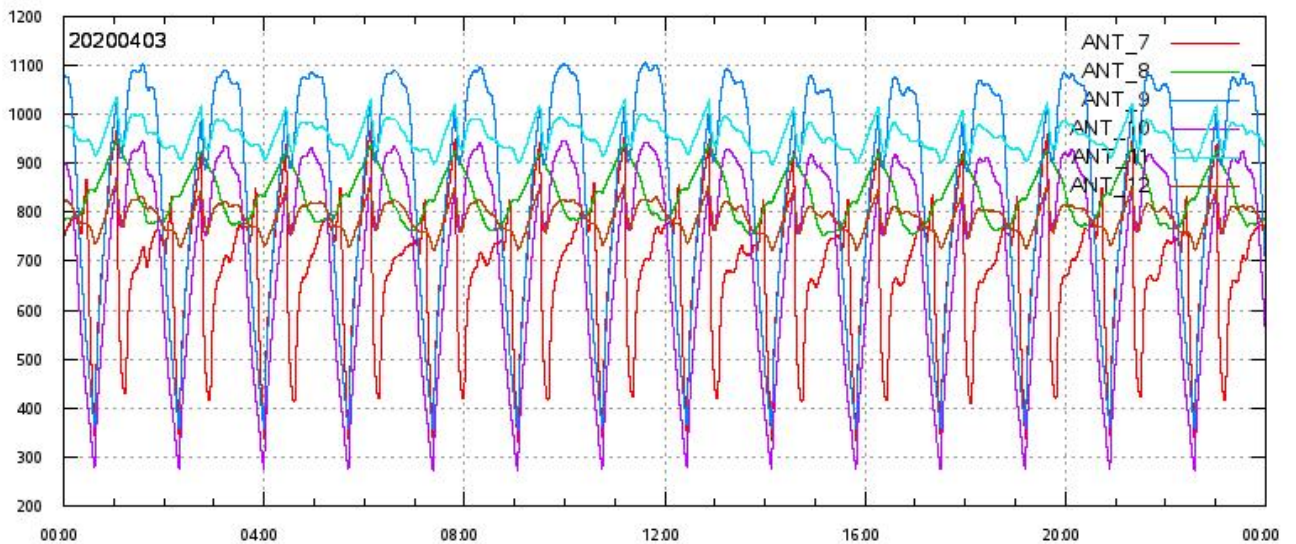
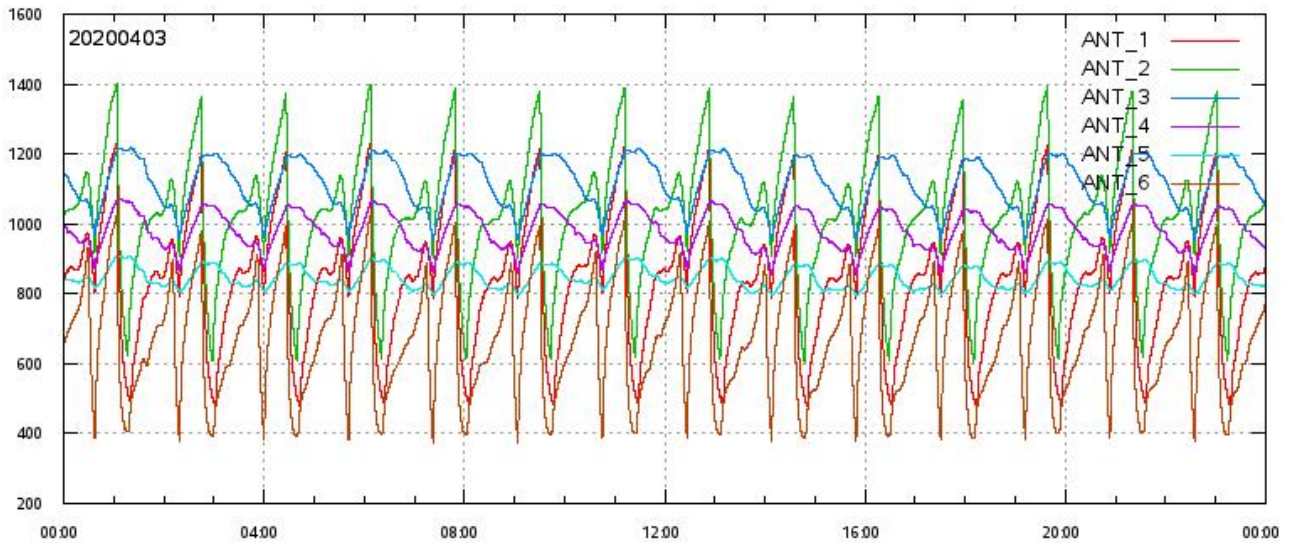
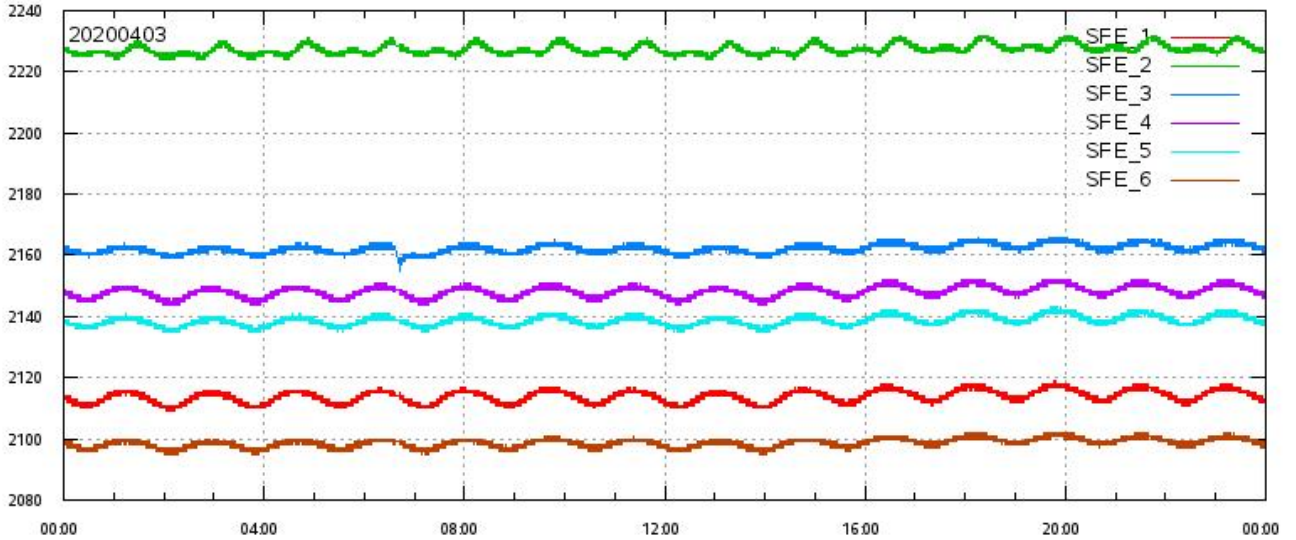
L1A Product

ECHO DATA (raw) for samples 30, 100, 150 and 200 vs. UTC_LOCALISATION



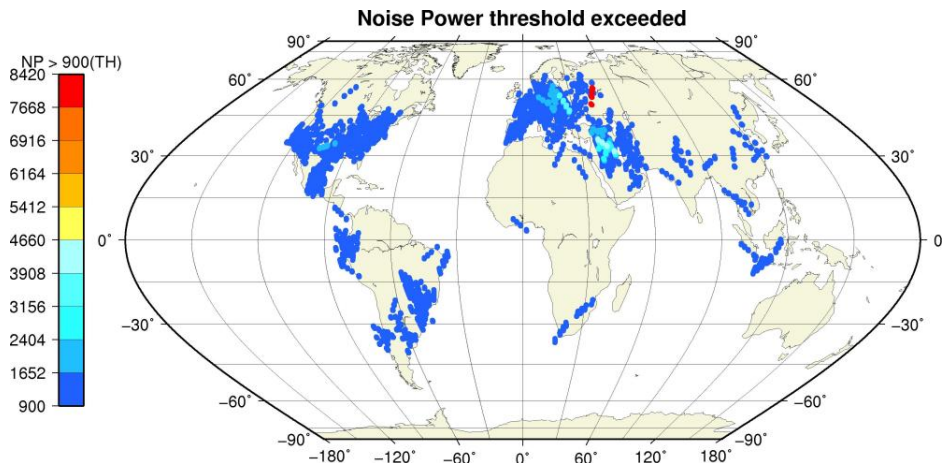
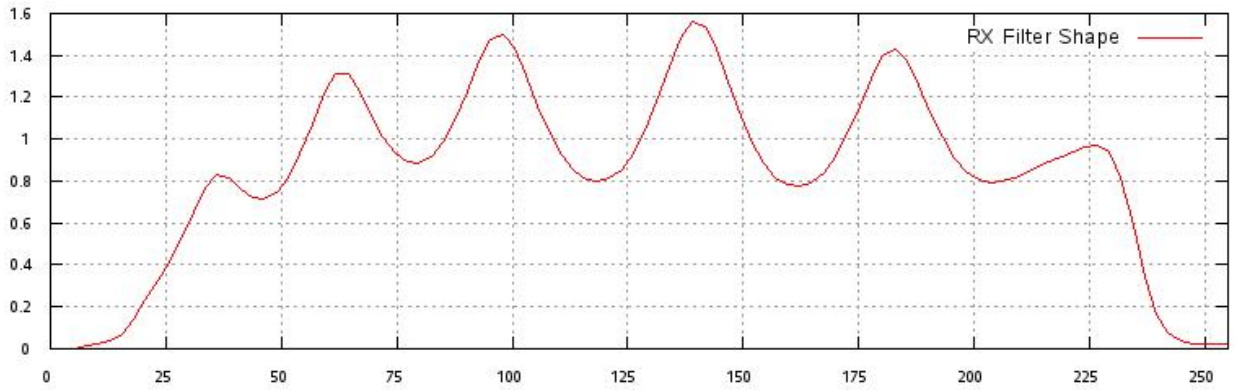
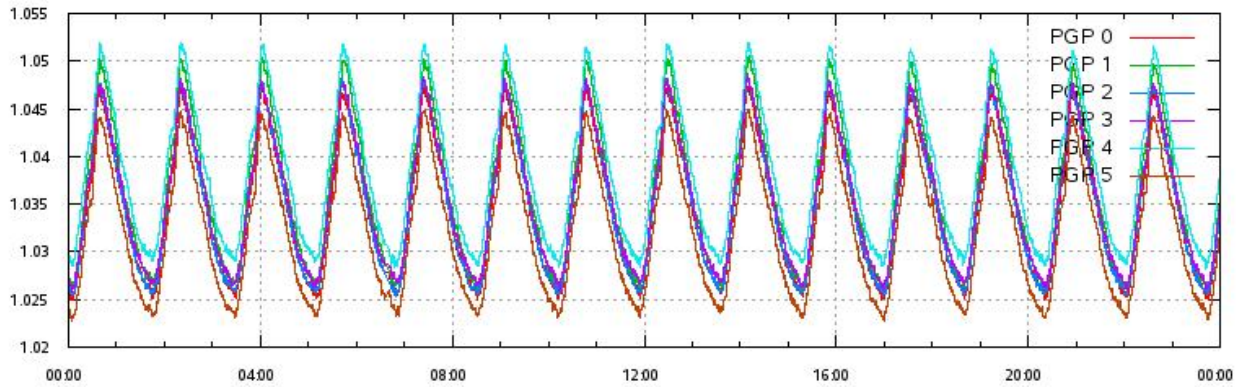
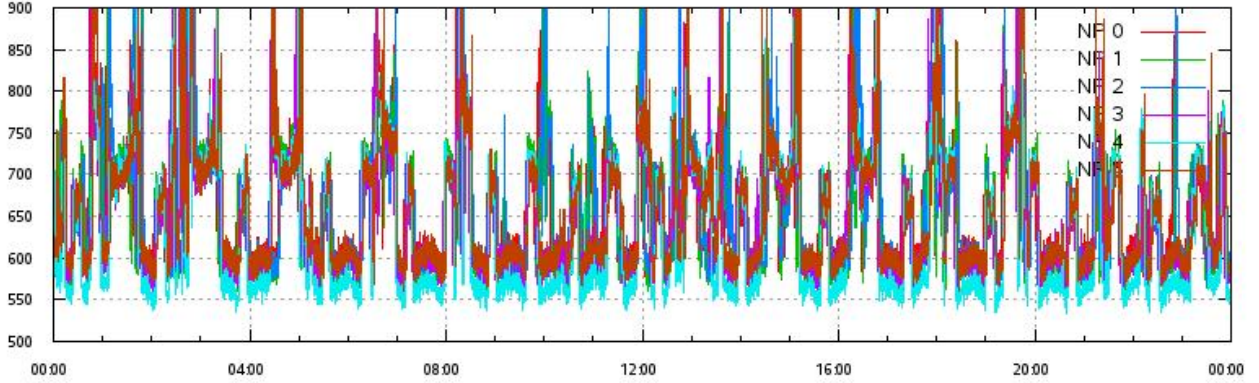
L1A Product

SFE & ANT Temperatures (raw) vs. UTC_LOCALISATION



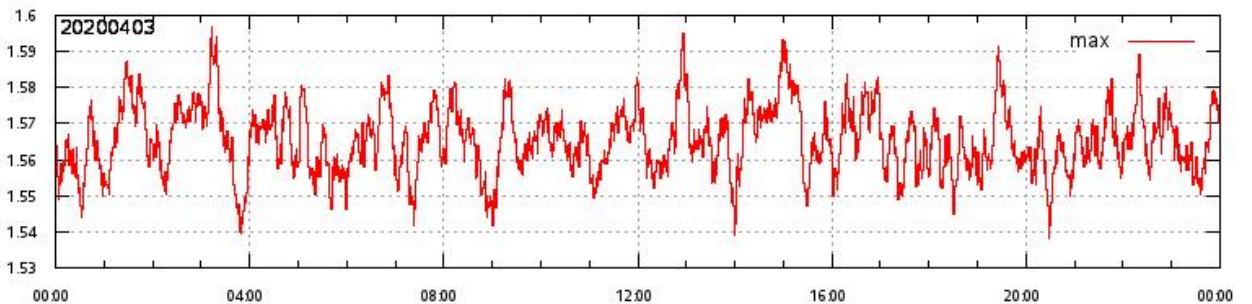
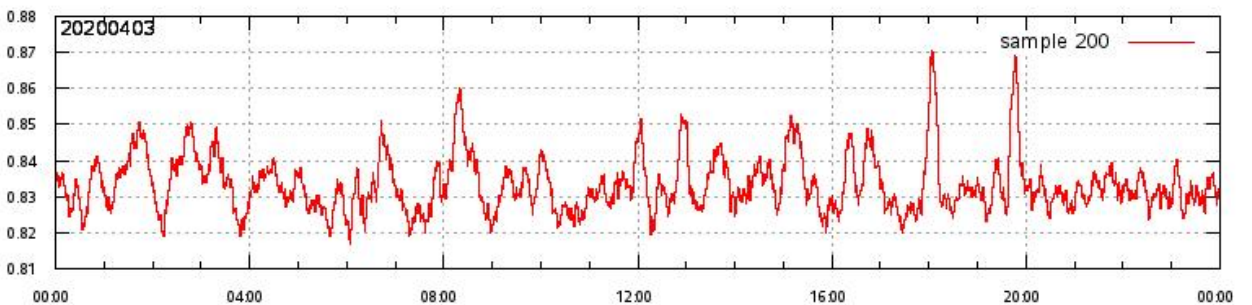
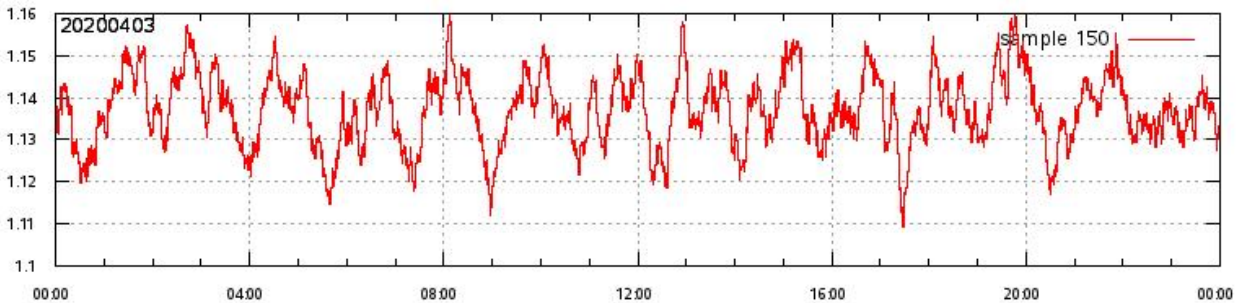
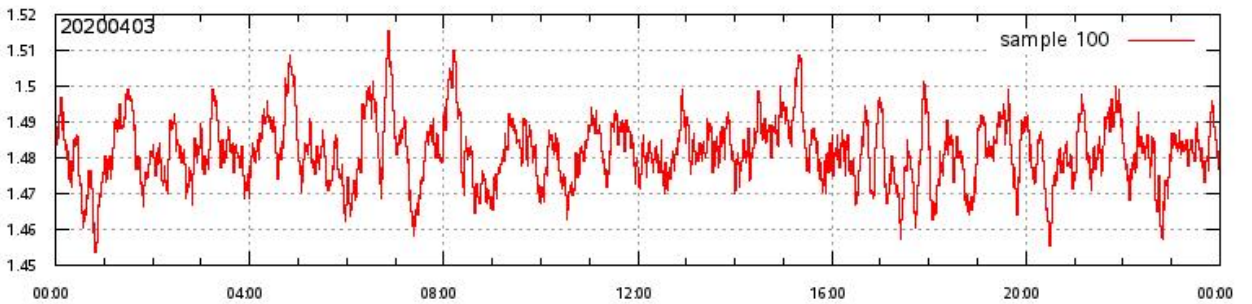
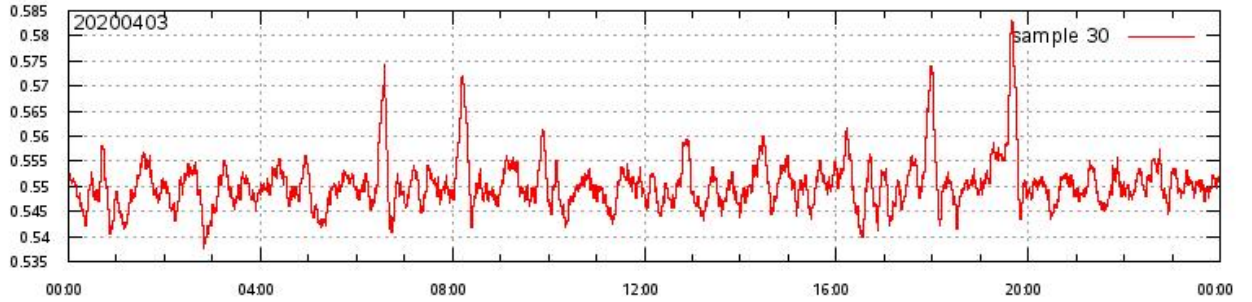
L1A Product

Noise Power & Power Gain Product per beam 0-5 vs. UTC_LOCALISATION
RX Filter Shape average over sample number
Noise Power threshold exceeded (TH=900) on map



L1A Product

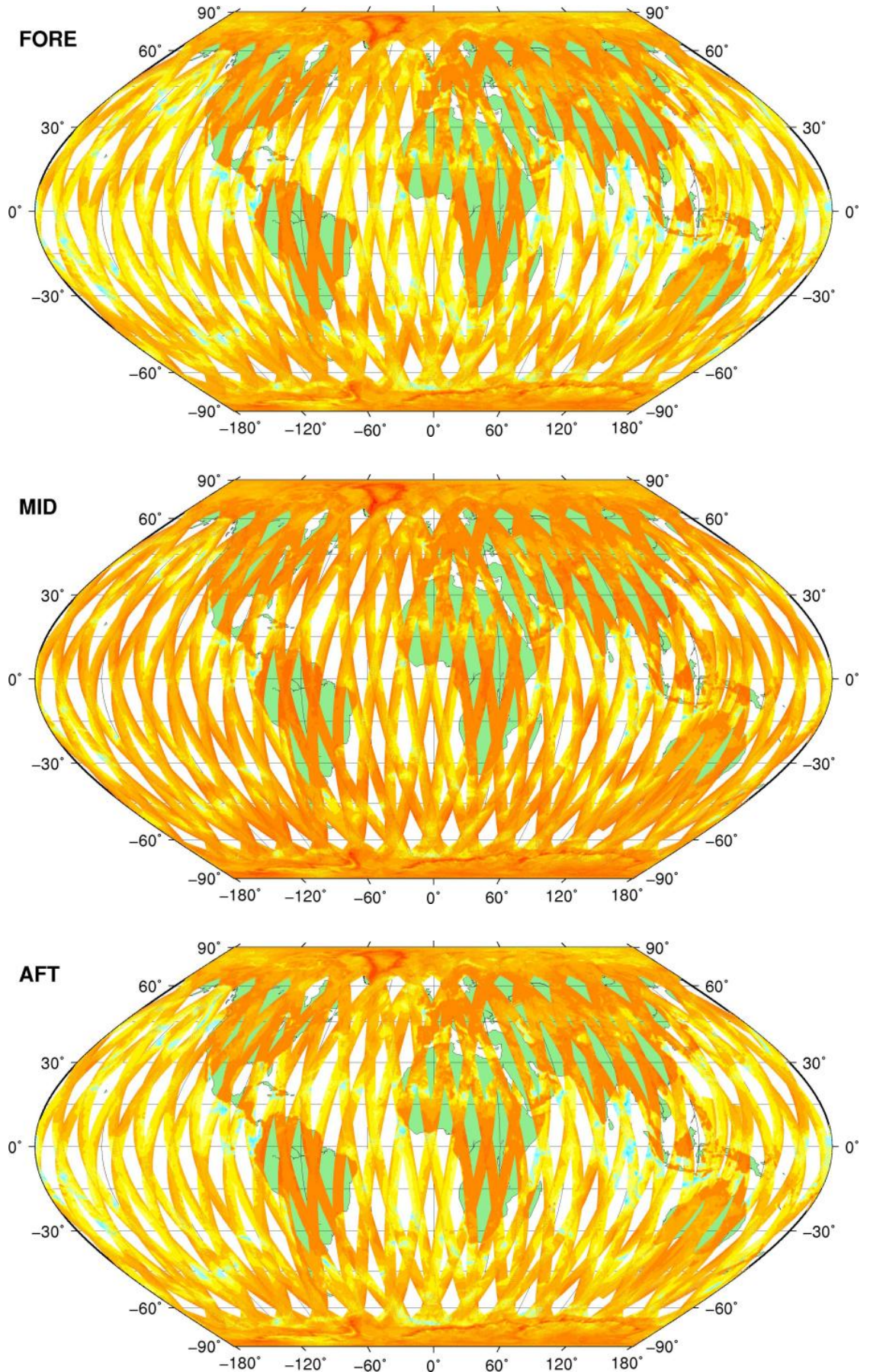
RX filter shape in detail for sample 30,100,150, 200 & max vs. UTC_LOCALISATION



SZO Product

Sigma0_TRIP Coverage map

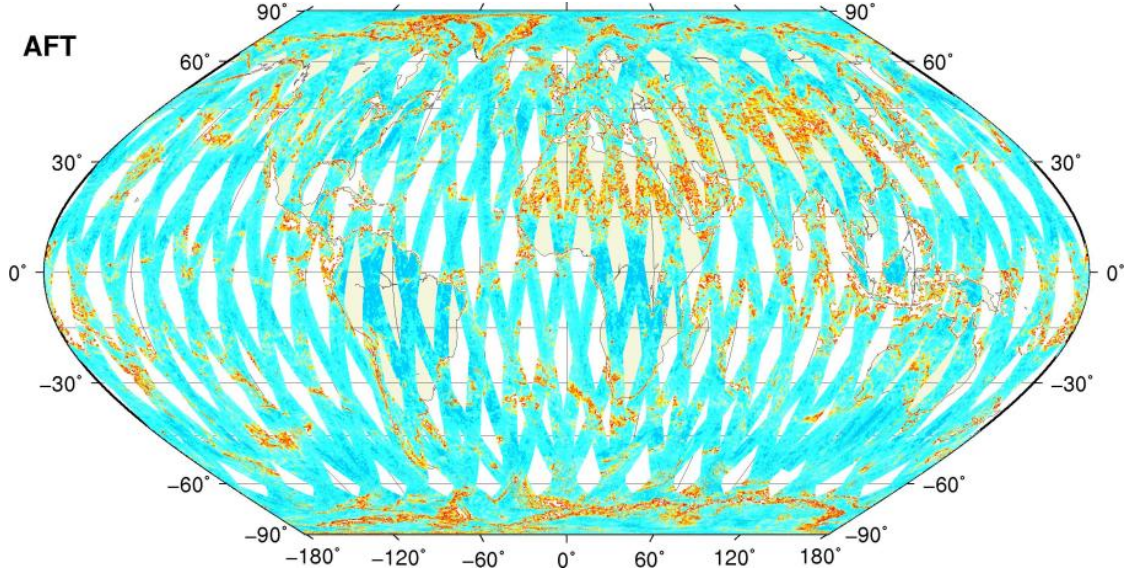
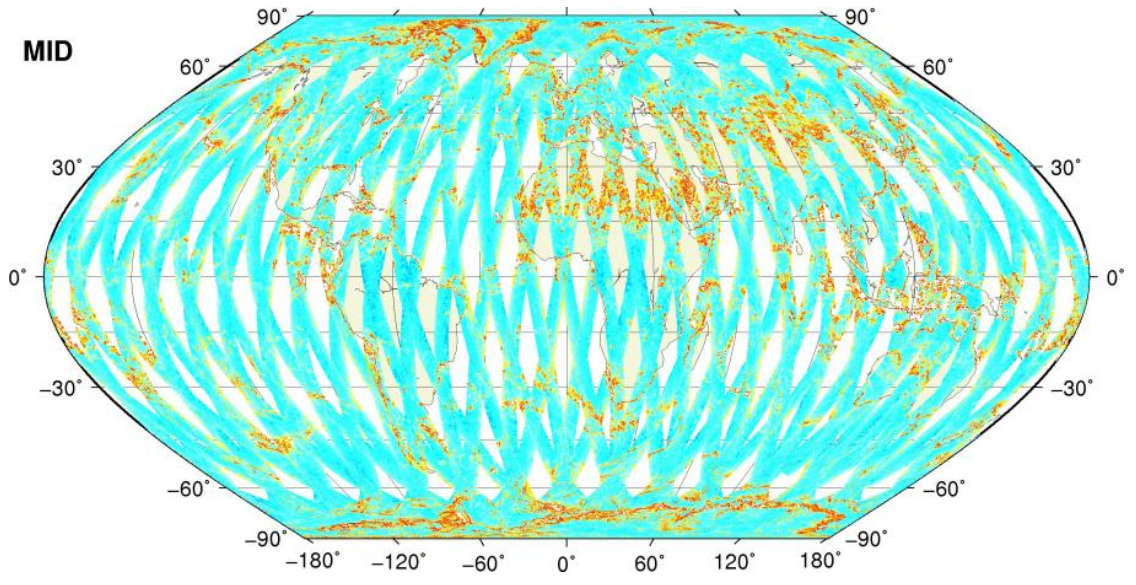
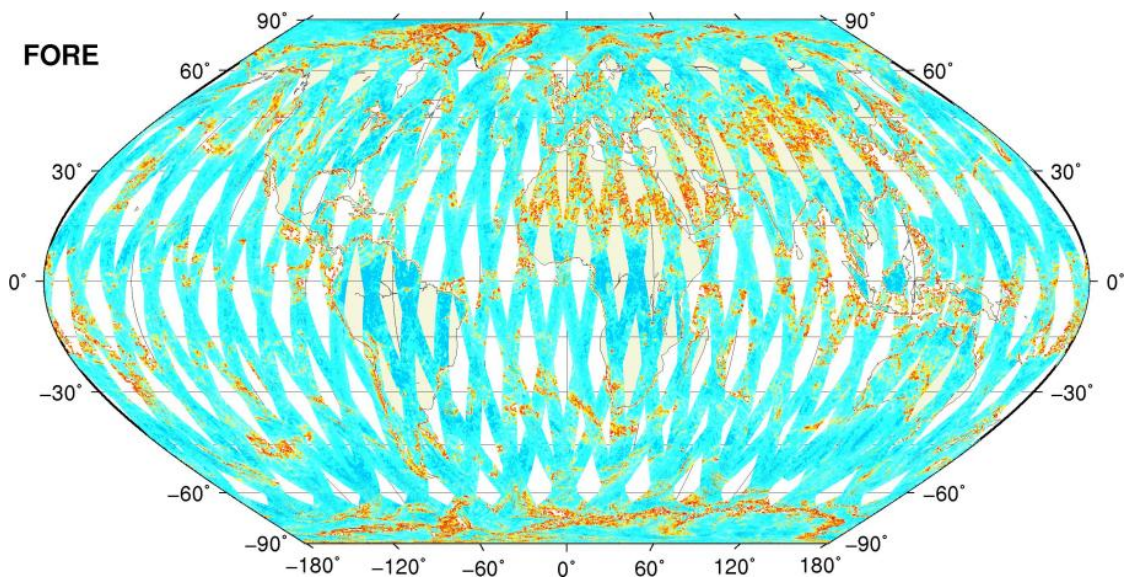
SIGMA0_TRIP Coverage



SZO Product

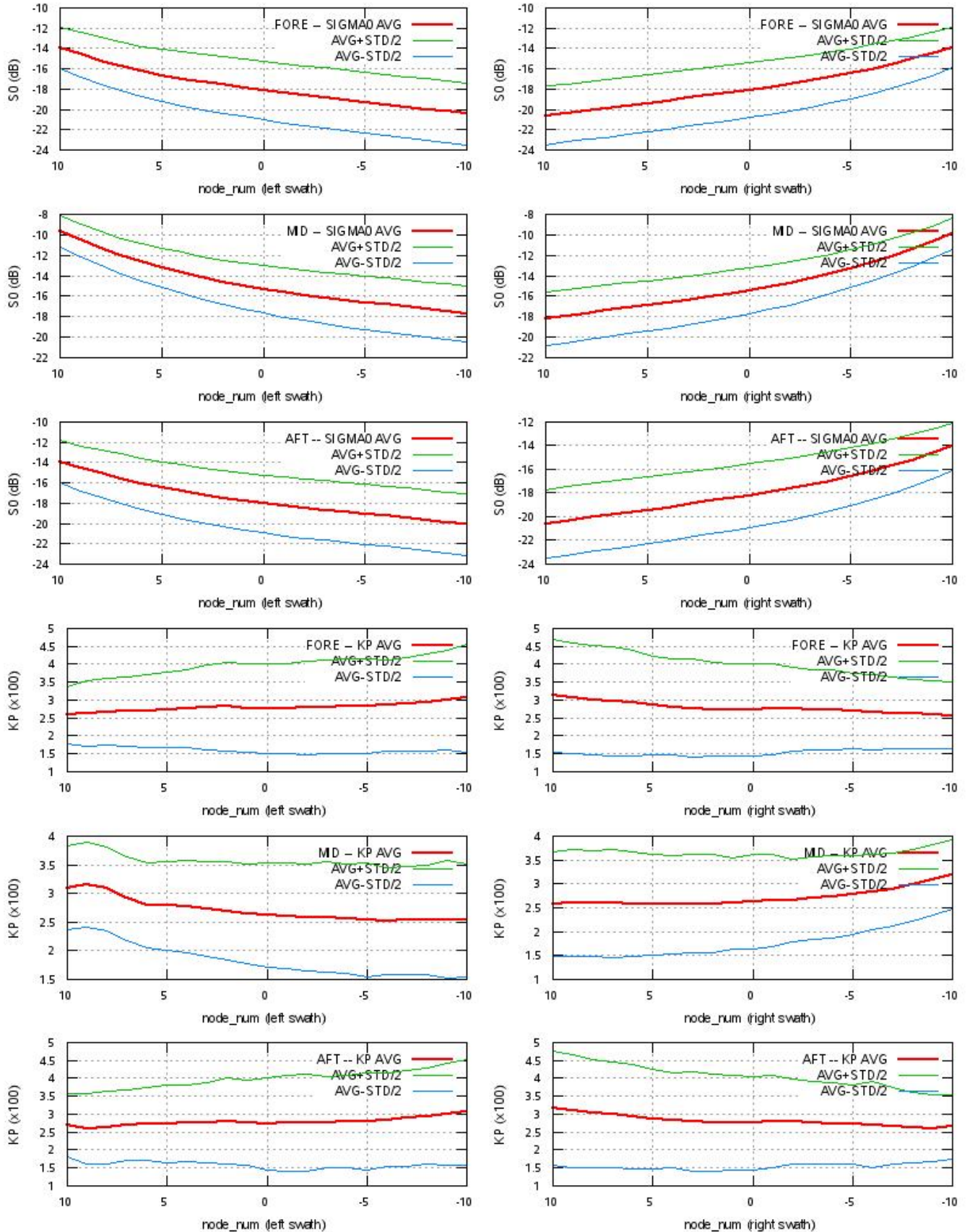
Kp Coverage map

Kp Coverage



SZO Product

S0 - Kp Statistics



SZO Product

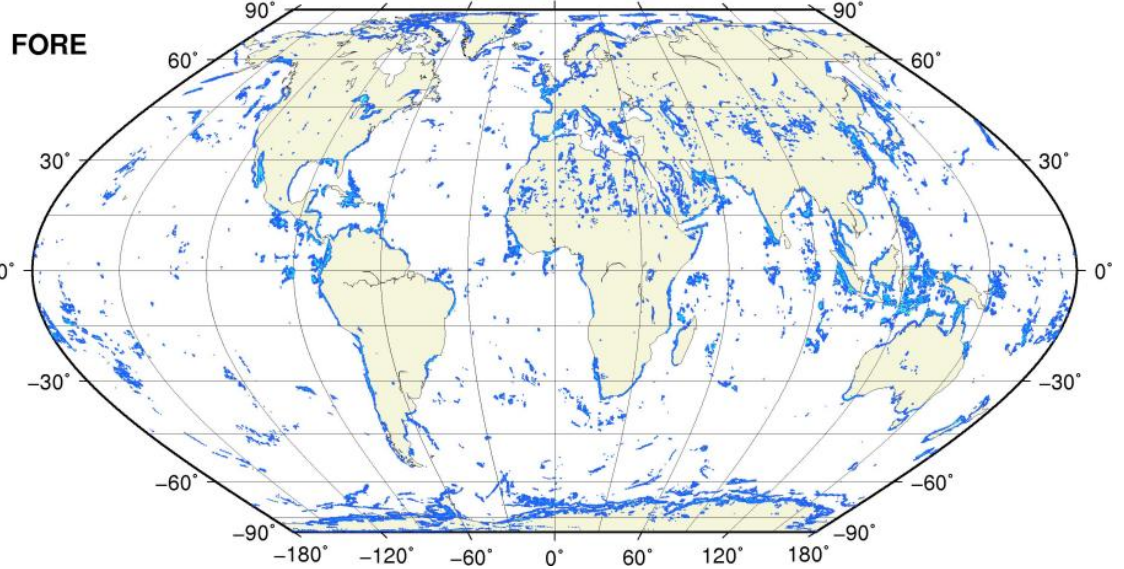
Kp Outliers on map

$0.06 < Kp < 1.0$

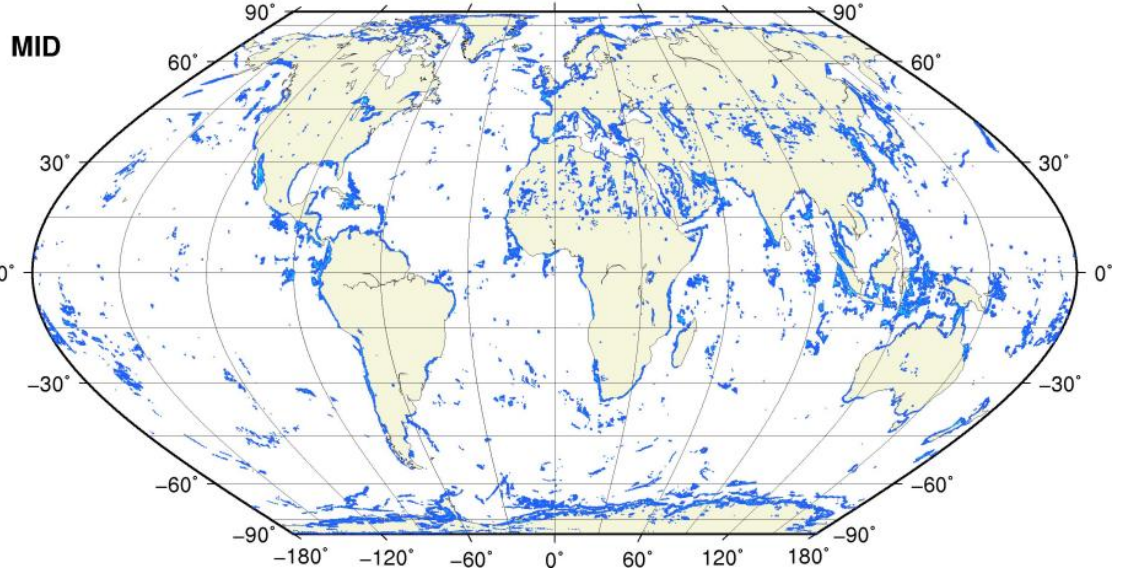
0.1 0.2 0.3 0.4 0.5 0.6 0.7 0.8 0.9 1.0



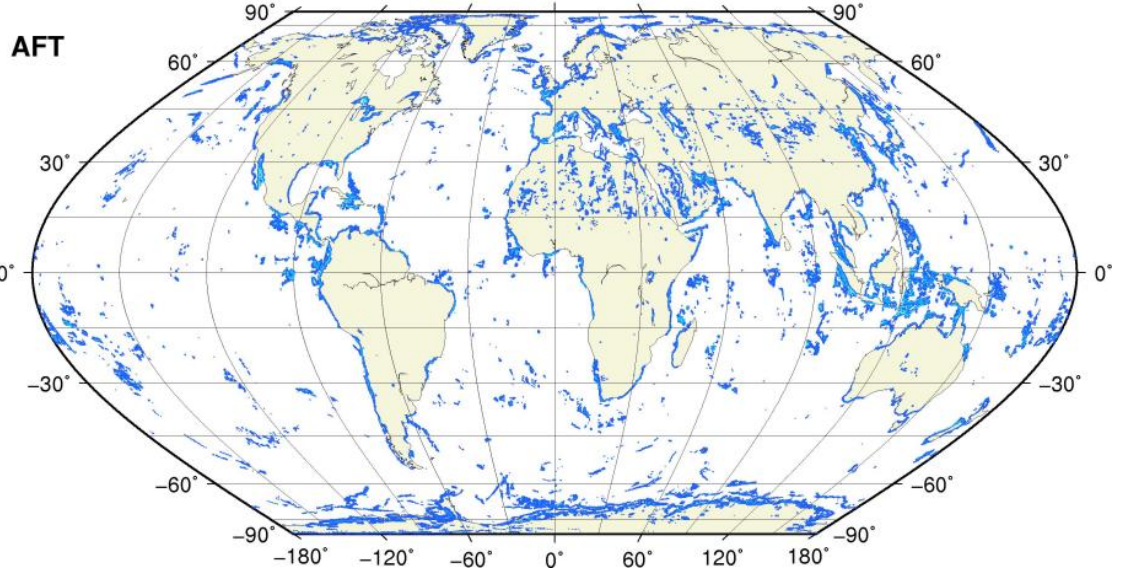
● KP = 1.0 #rec=0



● KP = 1.0 #rec=0



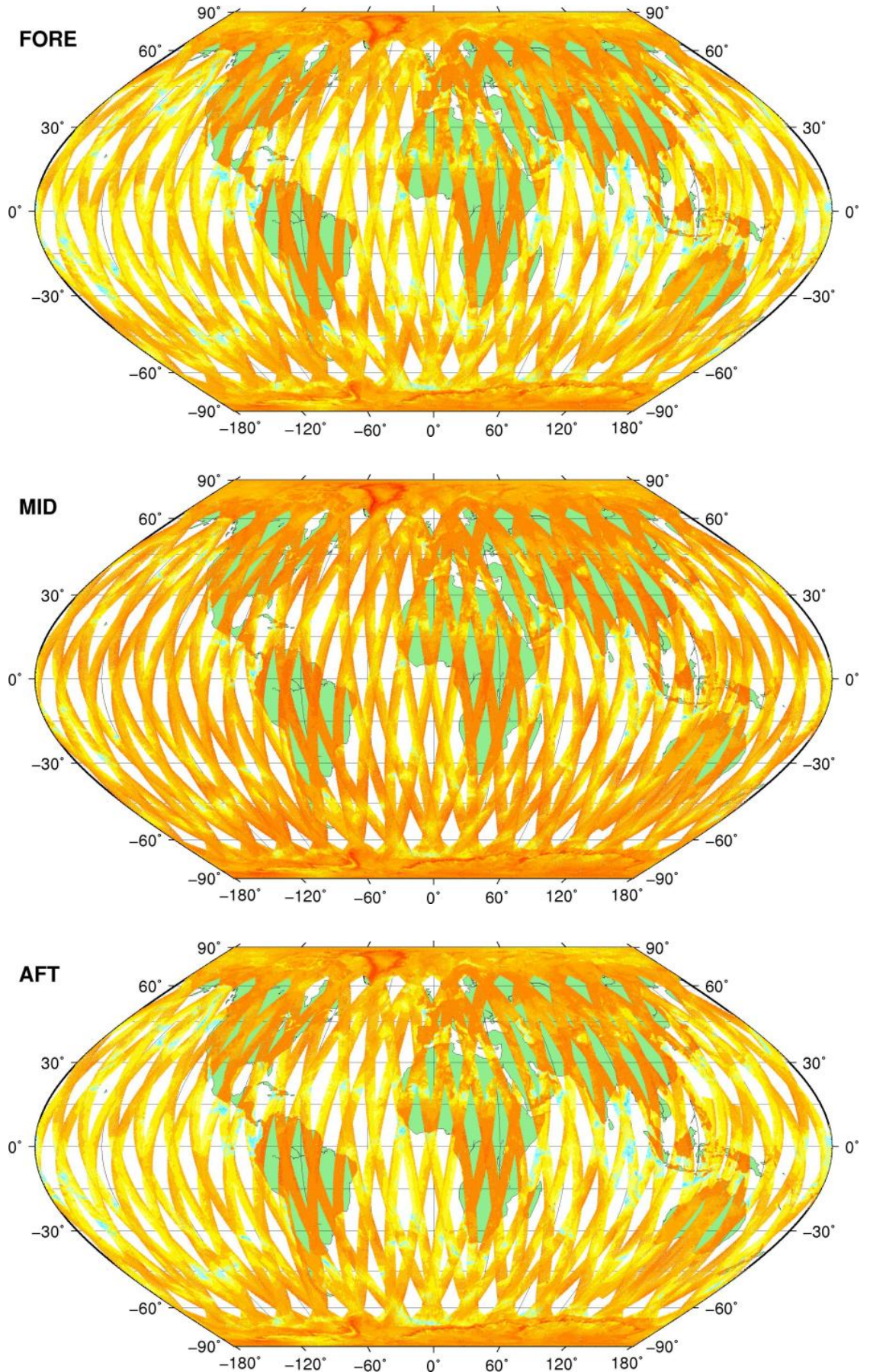
● KP = 1.0 #rec=0



SZR Product

Sigma0_TRIP Coverage map

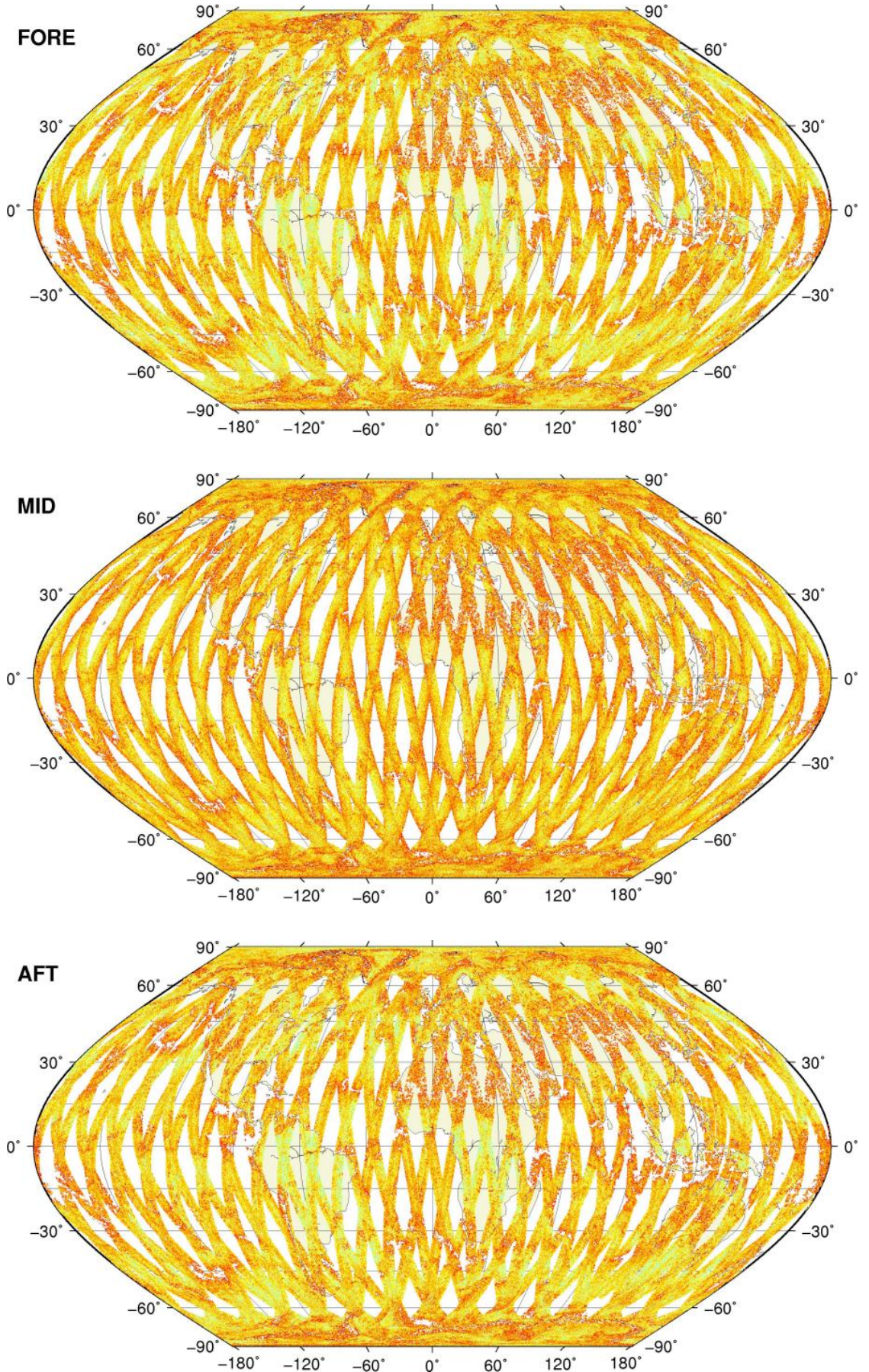
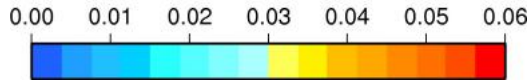
SIGMA0_TRIP Coverage



SZR Product

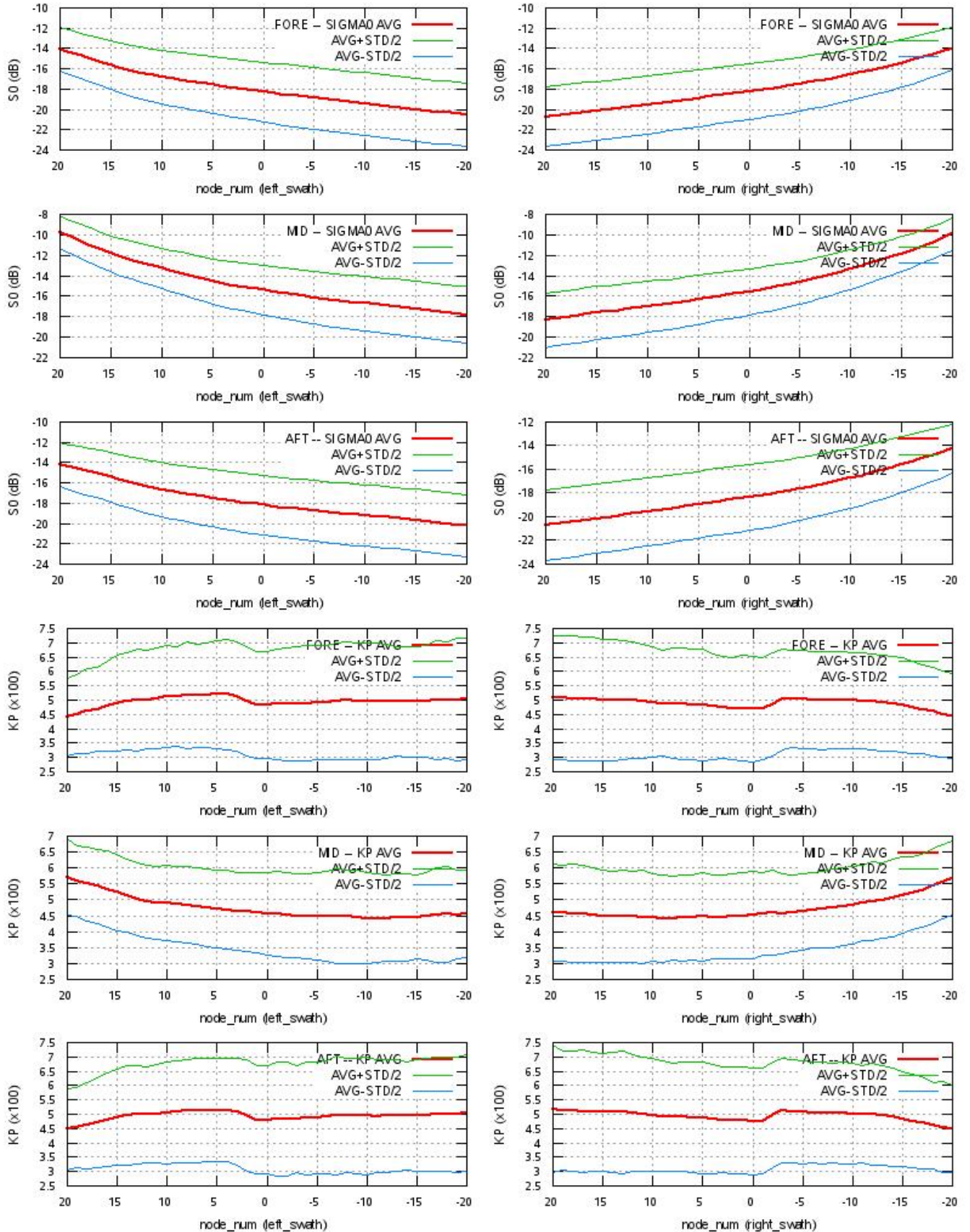
Kp Coverage map

Kp Coverage



SZR Product

S0 - Kp Statistics



SZR Product

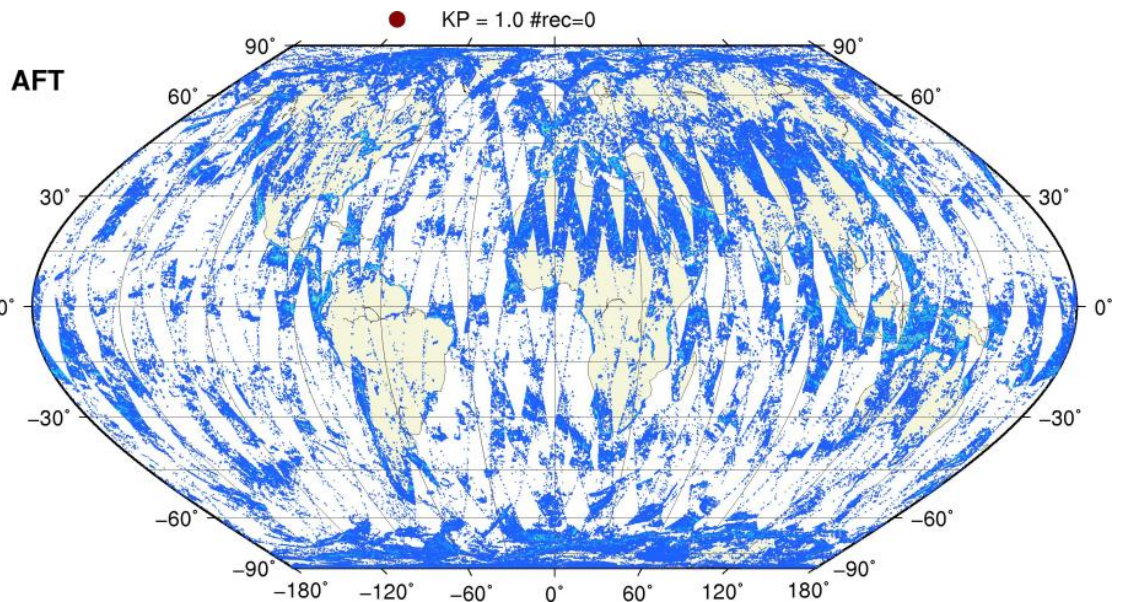
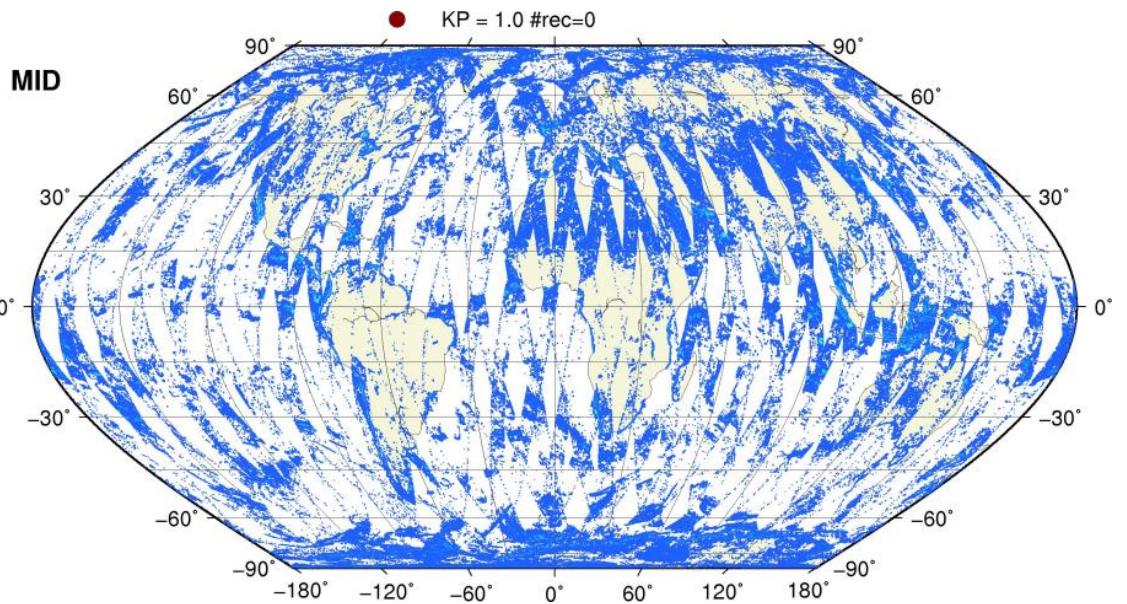
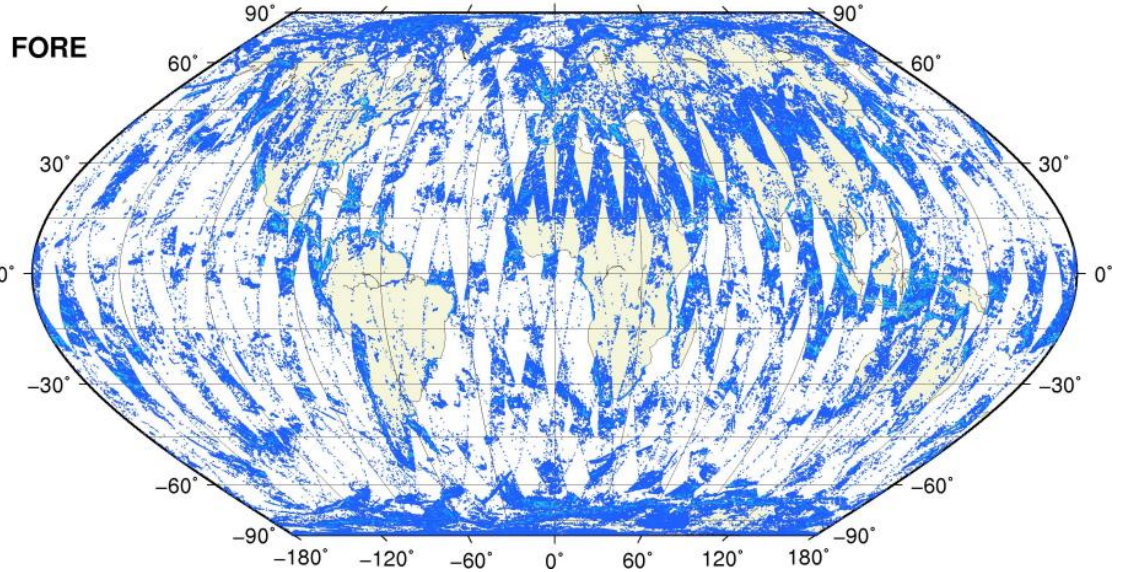
Kp Outliers on map

$0.06 < Kp < 1.0$

0.1 0.2 0.3 0.4 0.5 0.6 0.7 0.8 0.9 1.0

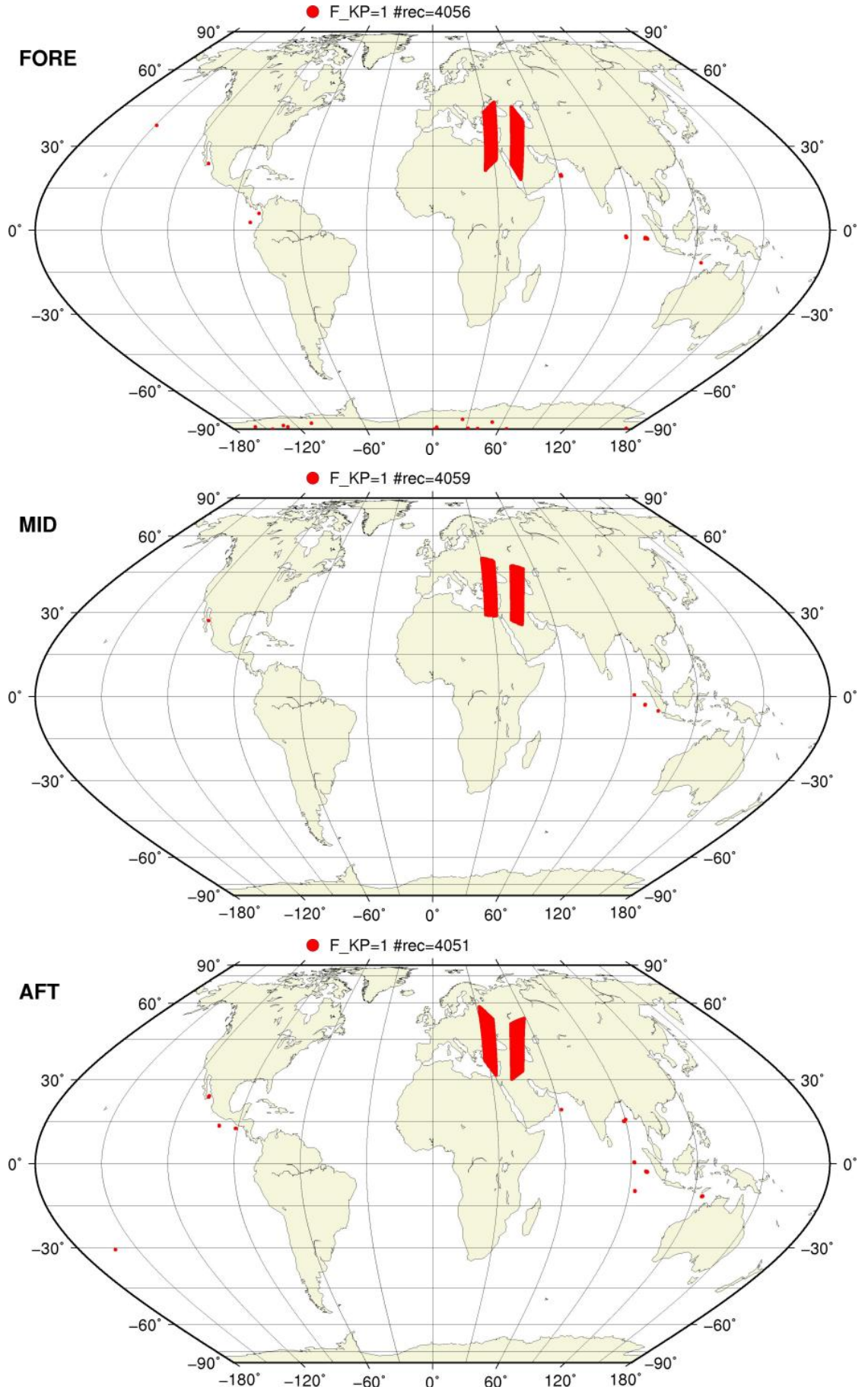


● KP = 1.0 #rec=0



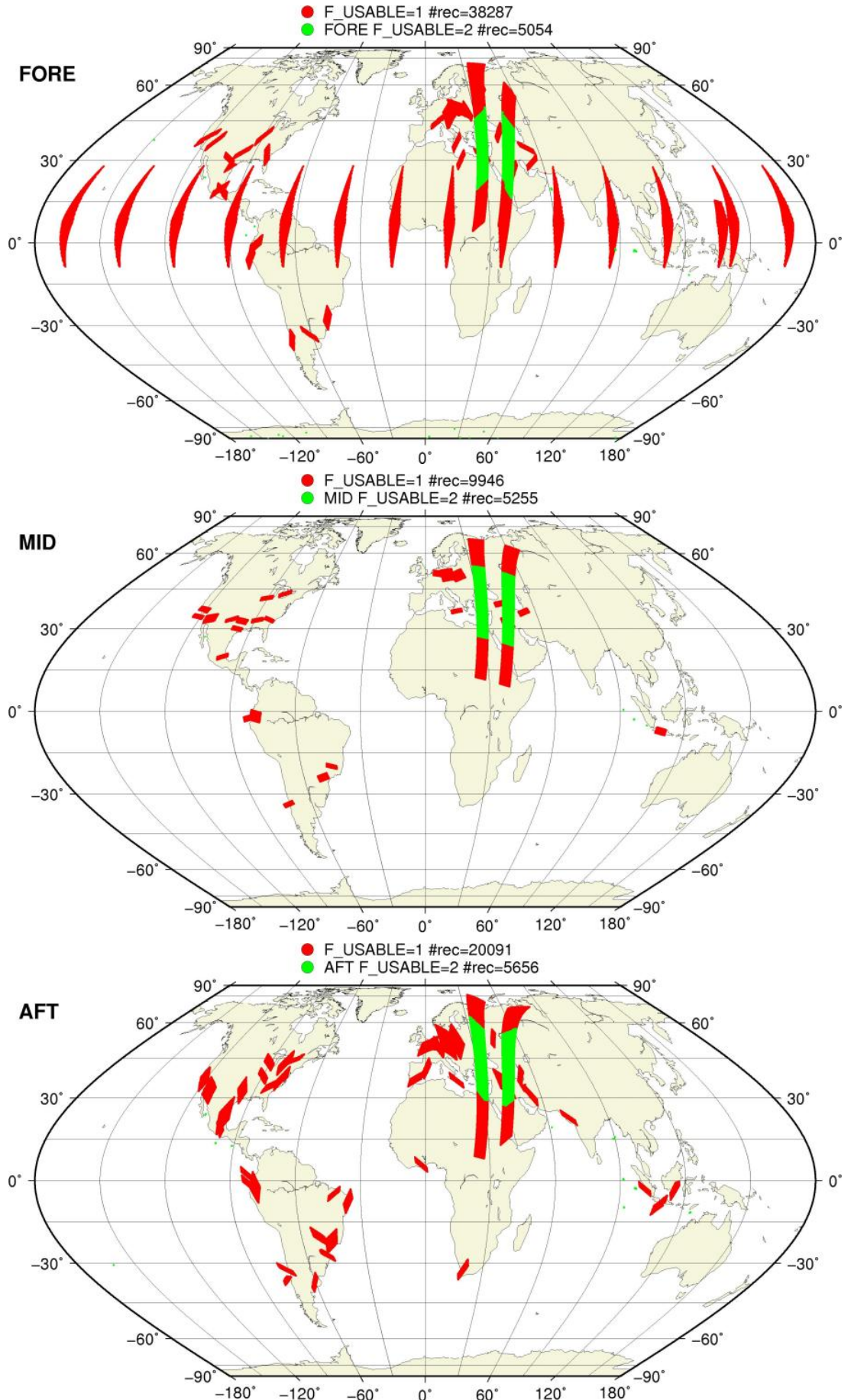
SZO Flagged Data Coverage

F_KP = 1 on map



SZO Flagged Data Coverage

F_USABLE = 1 or 2 on map



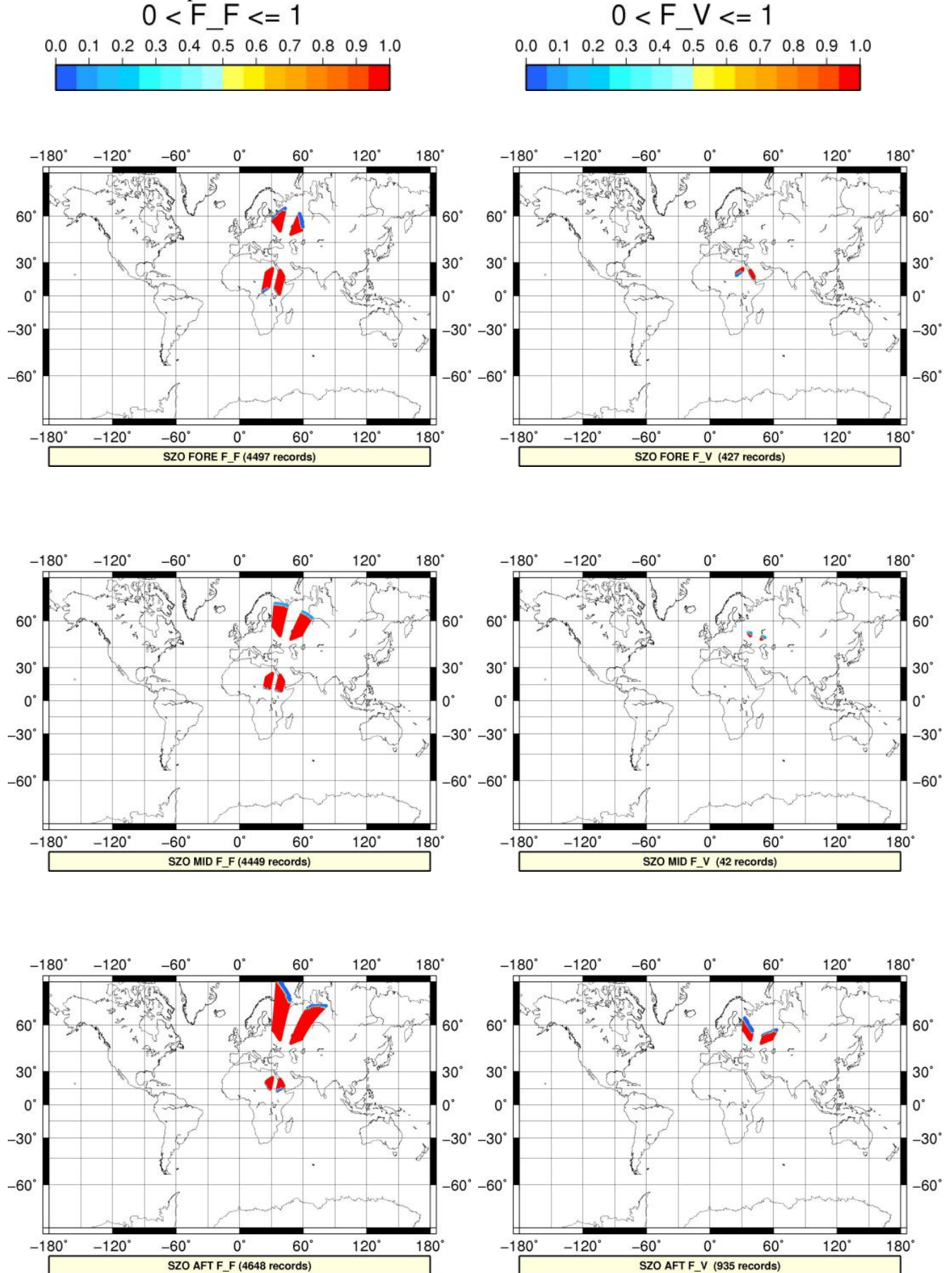
SZO Flagged Data Coverage

$0 < F_{OA} \leq 1$ on map



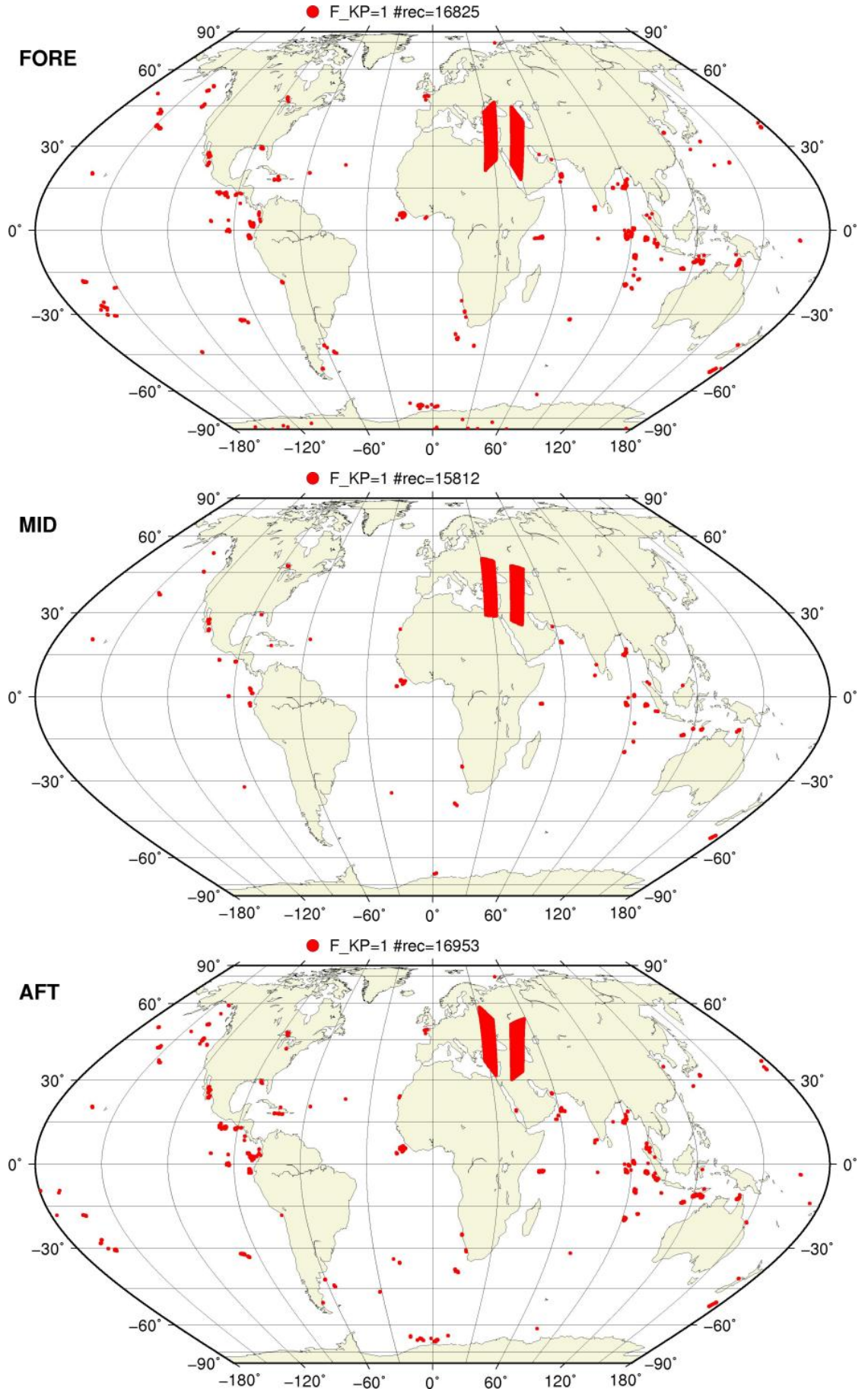
SZO Flagged Data Coverage

$0 < F_{F/V} \leq 1$ on map



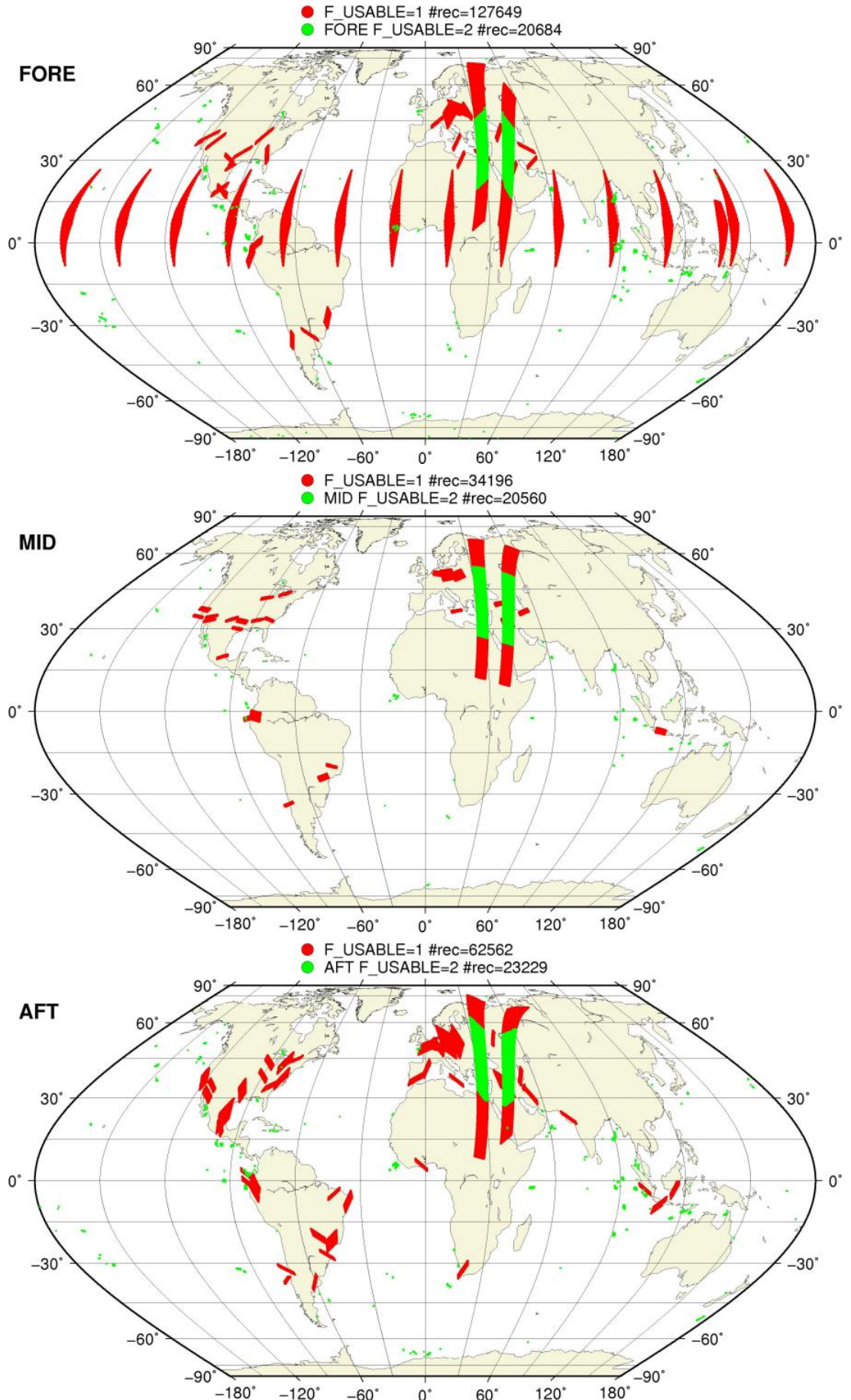
SZR Flagged Data Coverage

F_KP = 1 on map



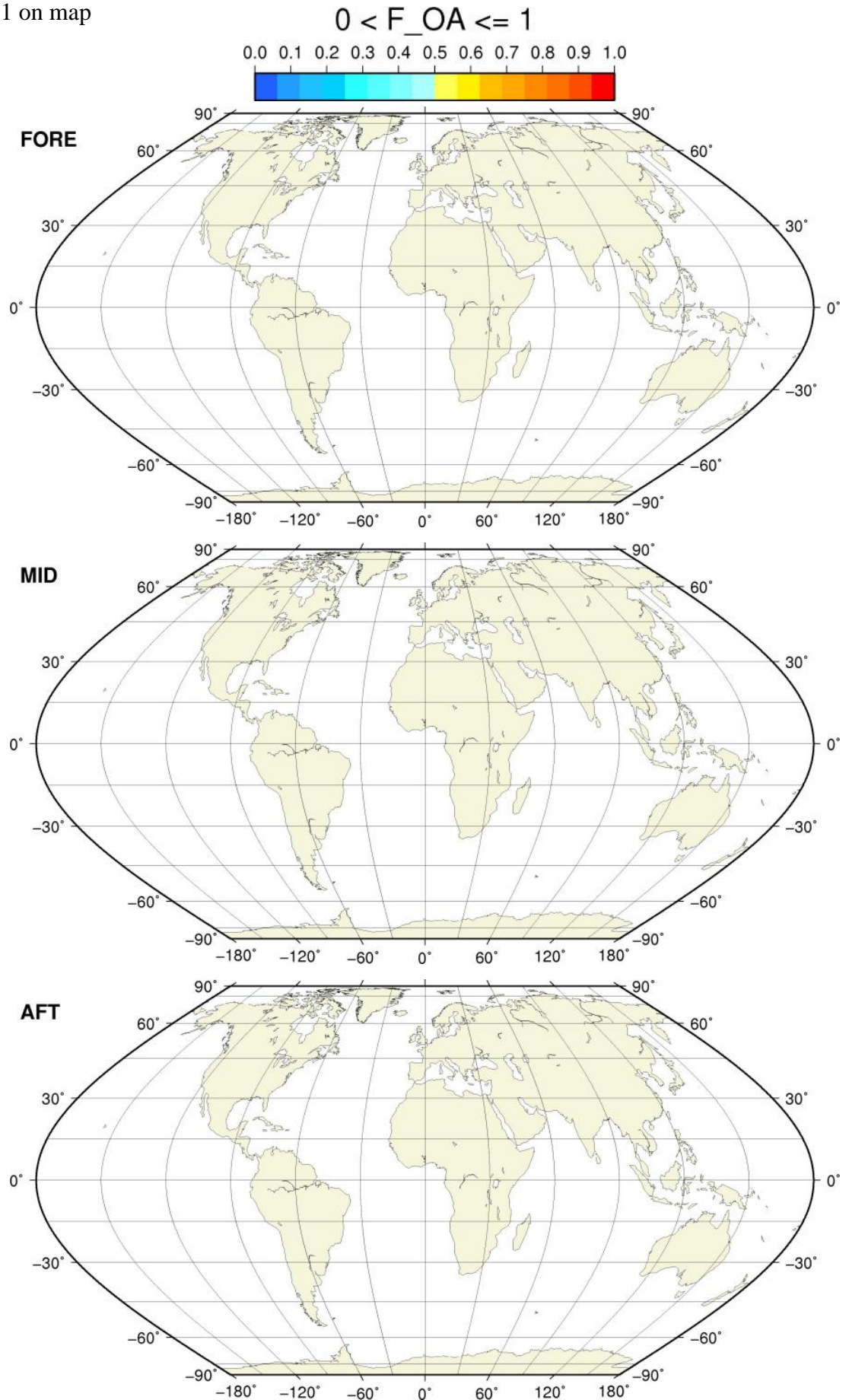
SZR Flagged Data Coverage

F_USABLE = 1 or 2 on map



SZR Flagged Data Coverage

$0 < F_{OA} \leq 1$ on map



SZR Flagged Data Coverage

$0 < F_{F/V} \leq 1$ on map

