

ASCAT DAILY Report

Metop-B

OPE

DAY 2022_185

20220704000000 - 20220704235959

DATA STATISTICS

BASED ON ORBITS (#14)

50808 50809 50810 50811 50812 50813 50814 50815 50816 50817 50818 50819 50820
50821 50822

DB STATISTICS : OPE M01_20220704

SMO	480	2.28	.50	1.33	6.59
SMR	480	5.53	.95	3.62	11.13
SZF	477	1.40	1.93	.45	29.48
xxx	480	28.19	4.35	21.46	45.25

INGATE (STORE) STATISTICS : OPE M01_20220704

xxx_1A	/fbf/tcdras/store/gsl/ASCA_xxx_1A_M01	-- number of files (xxx_1A) : 480
SZO_1B	/fbf/tcdras/store/gsl/ASCA_SZO_1B_M01	-- number of files (SZO_1B) : 480
SZR_1B	/fbf/tcdras/store/gsl/ASCA_SZR_1B_M01	-- number of files (SZR_1B) : 480
SZF_1B	/fbf/tcdras/store/gsl/ASCA_SZF_1B_M01	-- number of files (SZF_1B) : 480
SMO_02	/fbf/tcdras/store/gsl/ASCA_SMO_02_M01	-- number of files (SMO_02) : 480
SMR_02	/fbf/tcdras/store/gsl/ASCA_SMR_02_M01	-- number of files (SMR_02) : 480

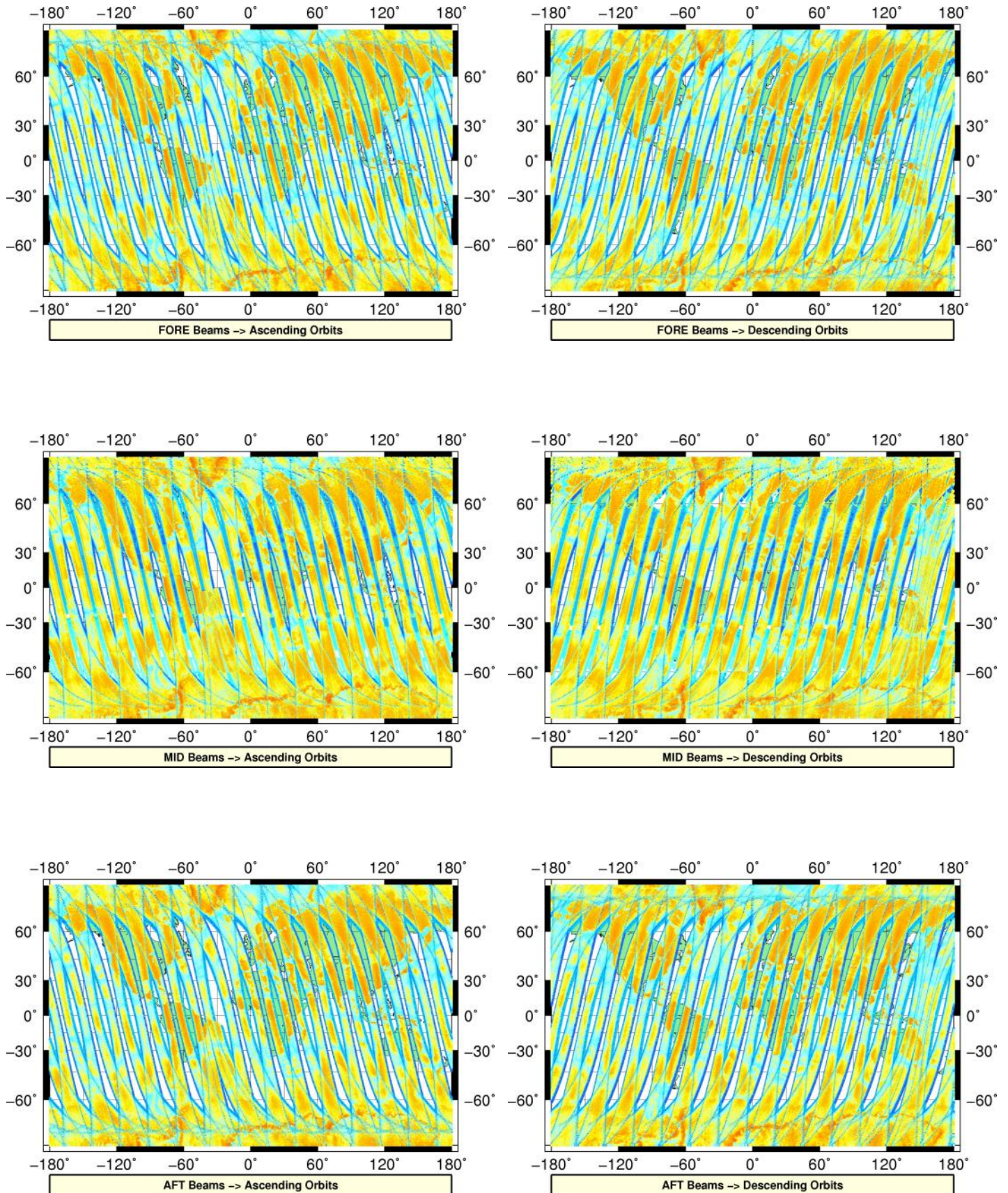
Overview

Configuration and SPHR content

Parameter	Value
SENSING START-STOP	20220704000000 - 20220704235959
ORBIT START-STOP	-
SATELLITE	M01
SW - DPU Version	3.9 (57)
SW - ICU Version	2.03 (35)
PARAM - Drive Level ID	0 (Nominal drive level as defined in the active DPU Data Set)
PARAM - DPU Data Set ID	2
PARAM - Revision ID	14
INST - Table Set ID	0 (no calibration, nominal table set used)
INST - Redundancy Config	127
	nominal ICU
	nominal DPU
	nominal RFU
	nominal HPA
	nominal SFE
	nominal SFE LNA
	nominal signal path (from HPA_B)
N_L1A_MDR	610398
N_L1A_MDR_B0	101733
N_L1A_MDR_B1	101733
N_L1A_MDR_B2	101733
N_L1A_MDR_B3	101733
N_L1A_MDR_B4	101733
N_L1A_MDR_B5	101733
N_GAPS	0
TOTAL_GAPS_SIZE	0
N_HKTM_PACKETS_RECEIVED	16122
N_F_NOISE	0
N_F_PG	0
N_V_PG	0
N_F_FILTER	0
N_V_FILTER	0
N_F_PGP	0
N_F_NP	0
N_F_ORBIT	0
N_F_ATTITUDE	0
N_F_OMEGA	0
N_F_MAN	0
N_F_OSV	0
N_F_E_TEL_PRES	0
N_F_E_TEL_IR	0
N_F_CE	0
N_V_CE	0
N_F_OA	0
N_F_TEL	0
N_F_REF	0
N_F_SA	1054490
N_F_LAND	49066326
N_F_GEO	3320124
N_F_SIGN	0
N_L1B_MDR	0
N_EMPTY_S0_TRIP	0
N_L1B_MDR_F	0
N_EMPTY_S0_TRIP_F	0
N_L1B_MDR_M	0

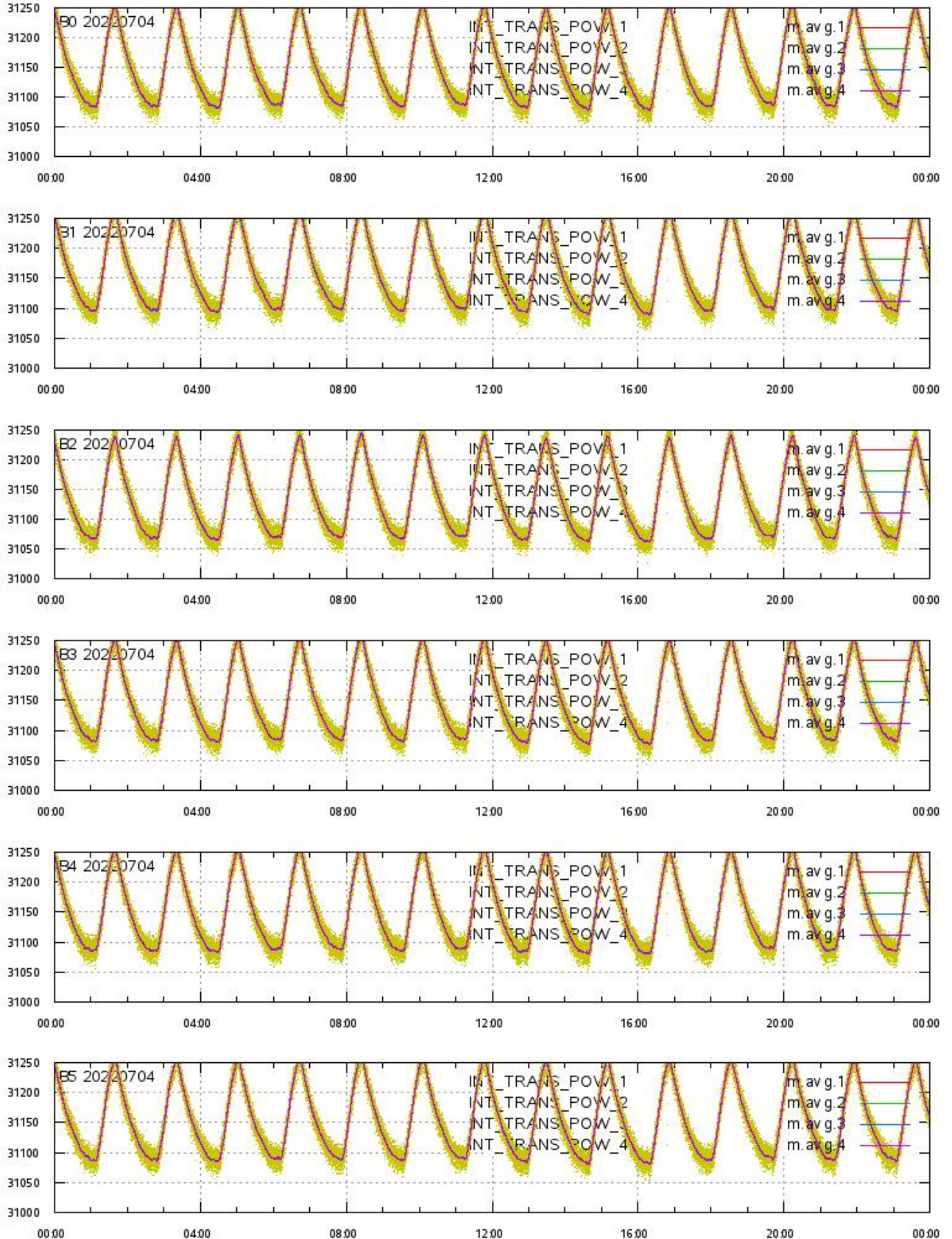
L1A Product

Echo Data Coverage maps



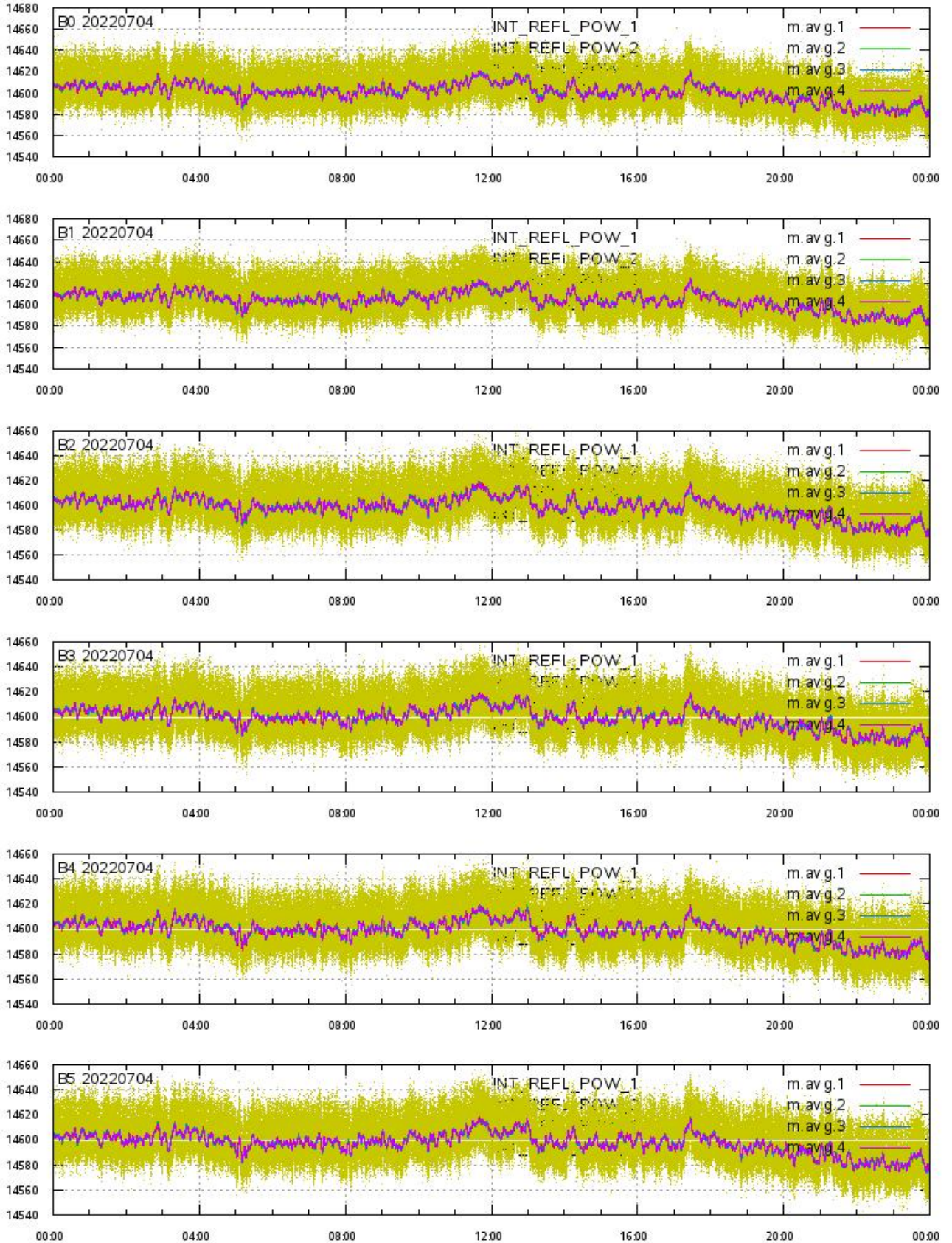
L1A Product

Integrated Transmitted Powers 1-4 per beam 0-5 vs. UTC_LOCALISATION



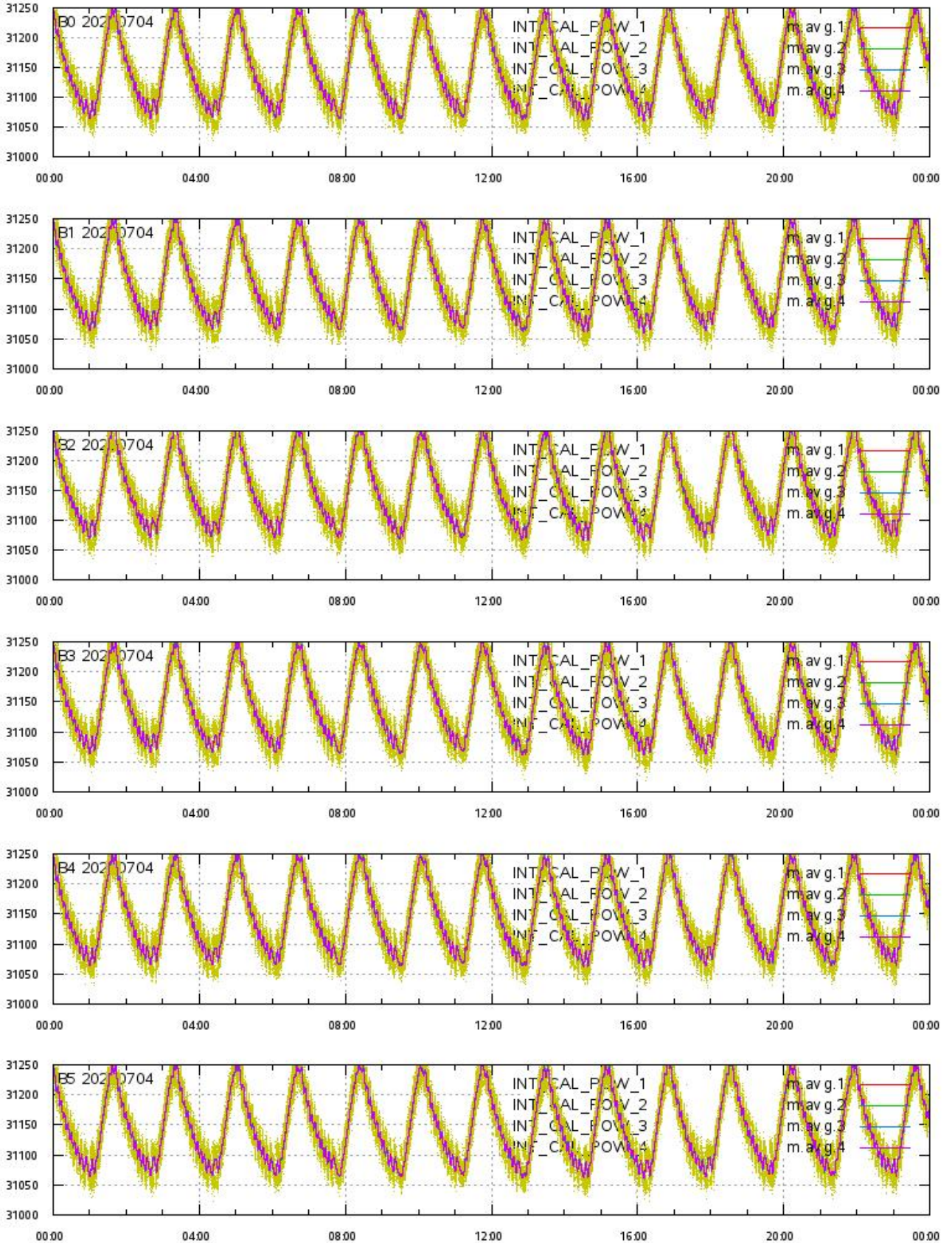
L1A Product

Integrated Reflected Powers 1-4 per beam 0-5 vs. UTC_LOCALISATION



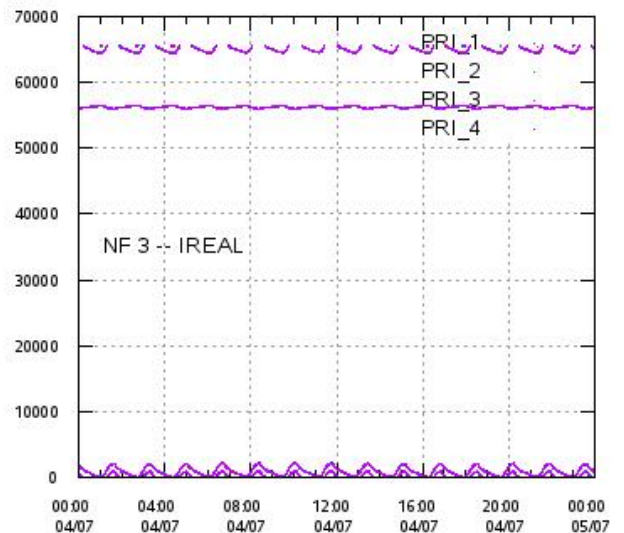
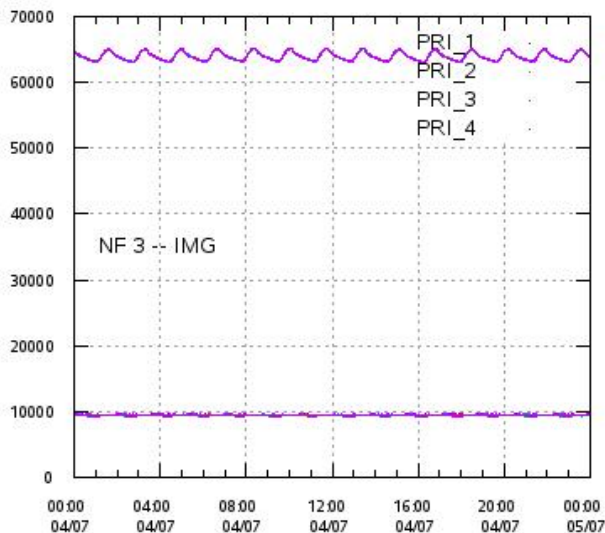
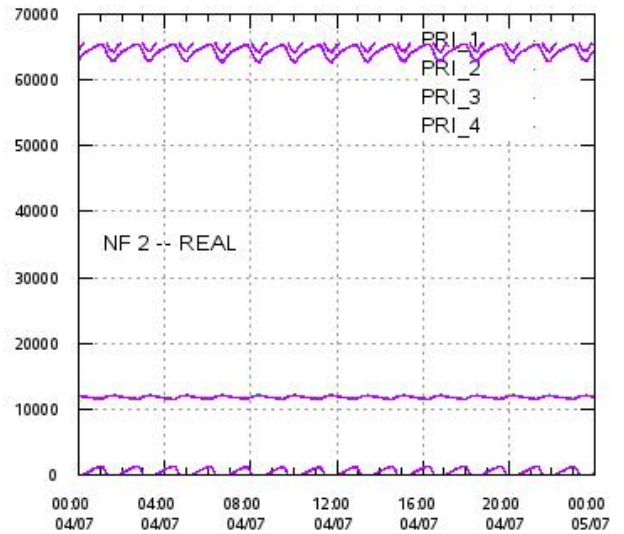
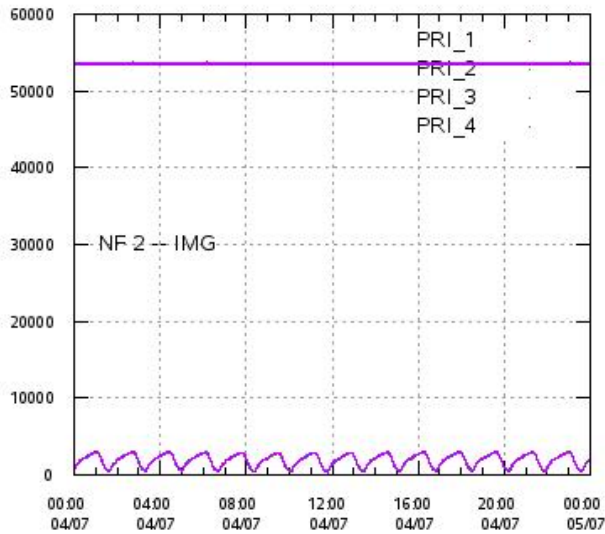
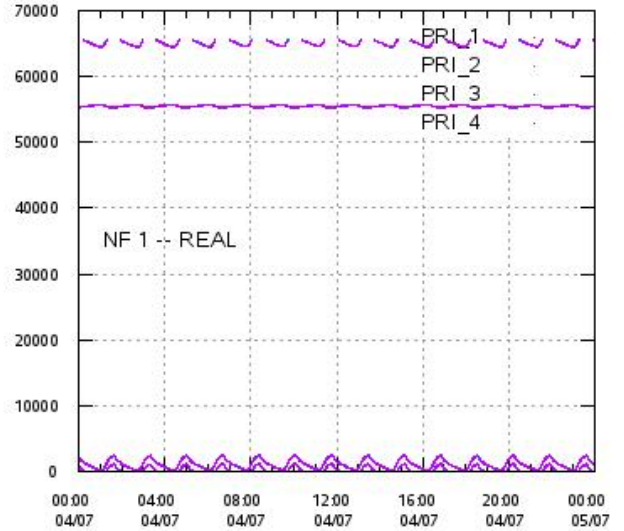
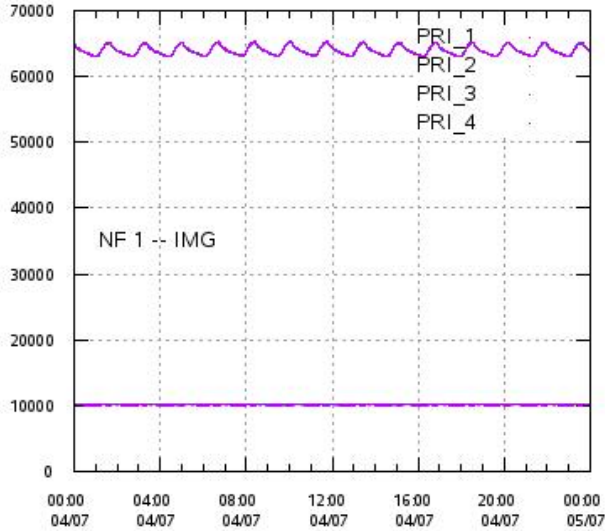
L1A Product

Integrated Calibration Powers 1-4 per beam 0-5 vs. UTC_LOCALISATION



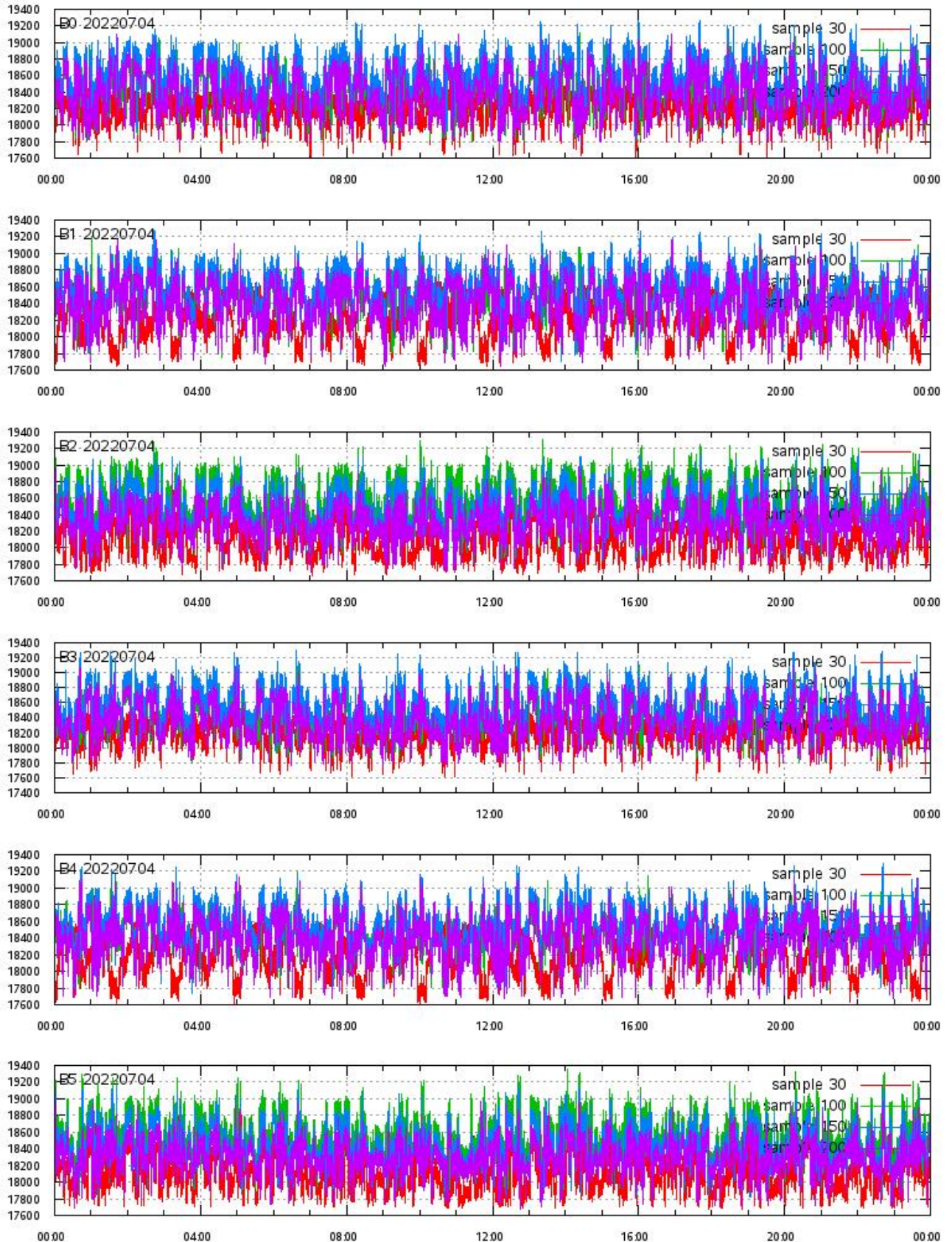
L1A Product

Calibration Powers vs. UTC_LOCALISATION



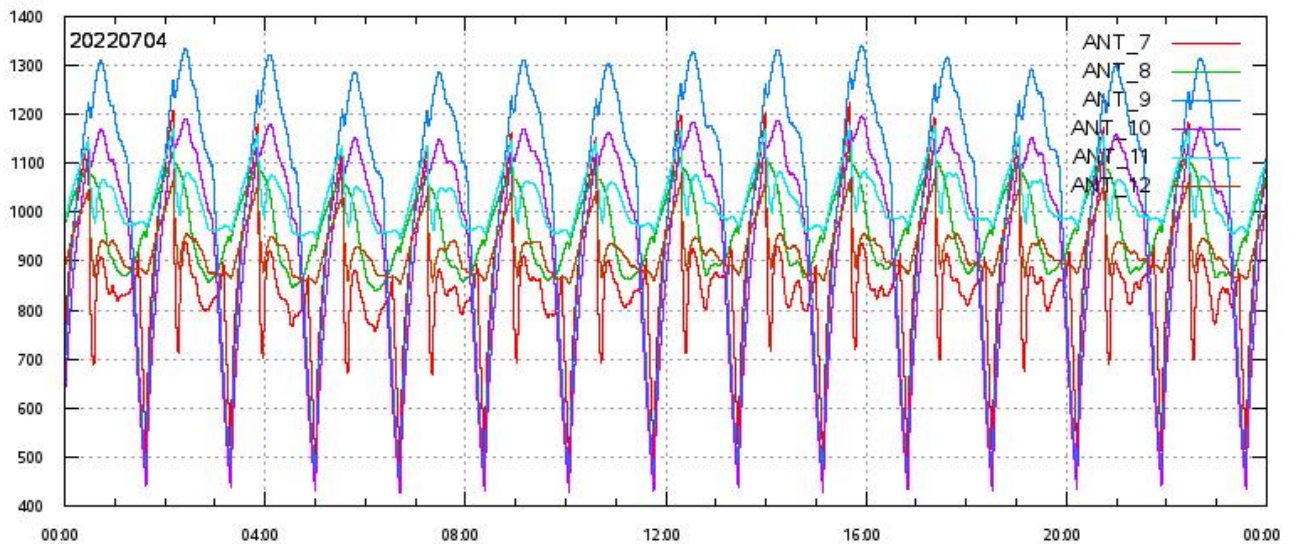
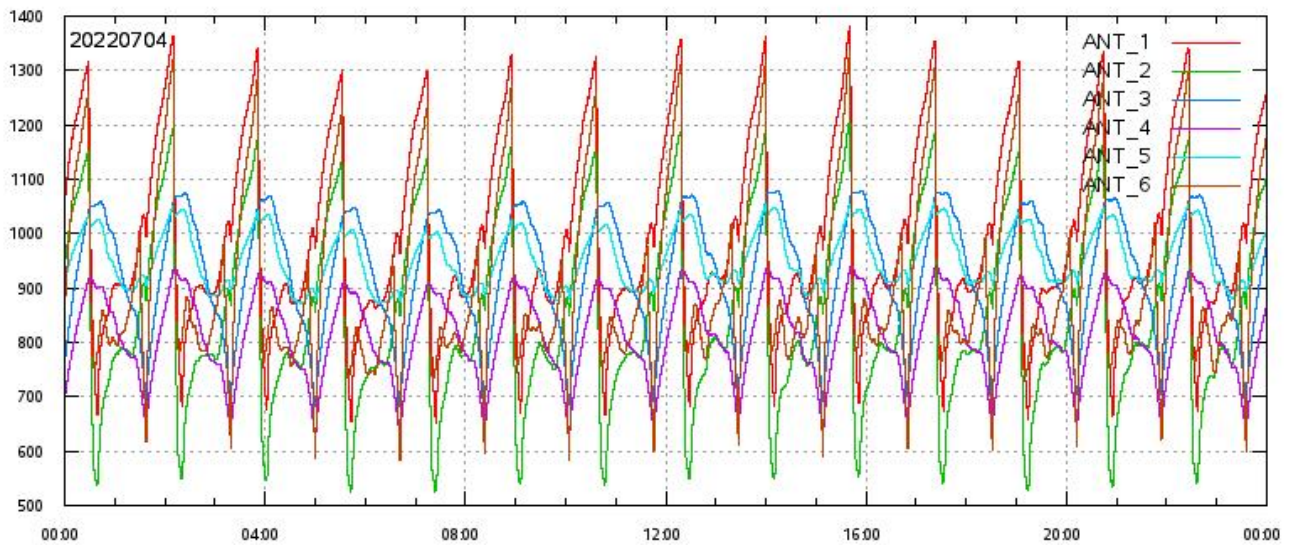
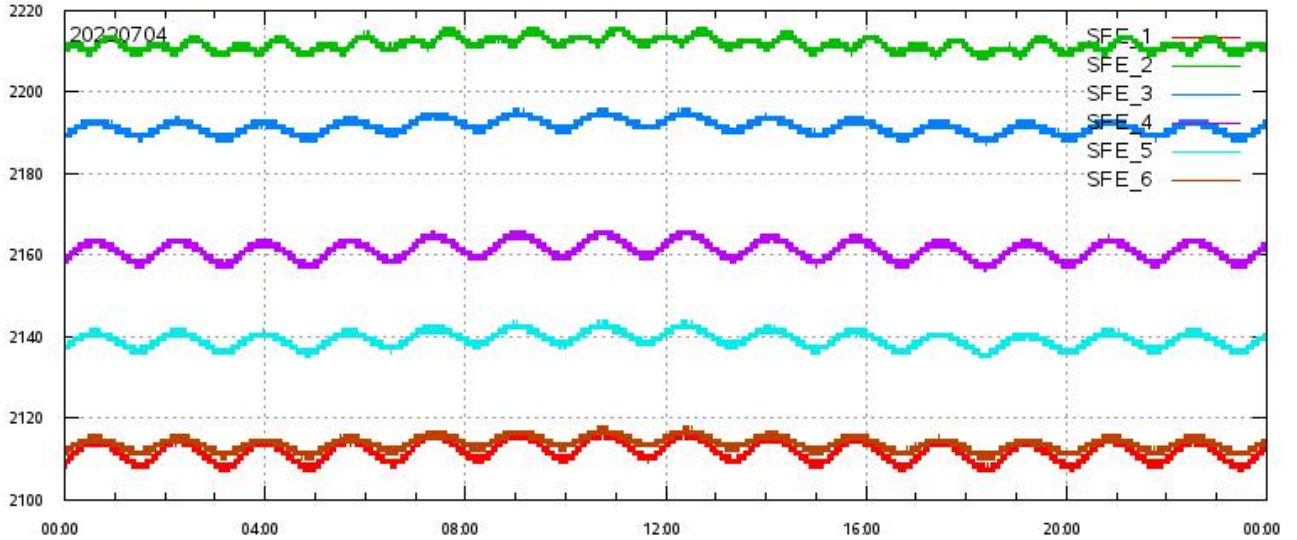
L1A Product

ECHO DATA (raw) for samples 30, 100, 150 and 200 vs. UTC_LOCALISATION



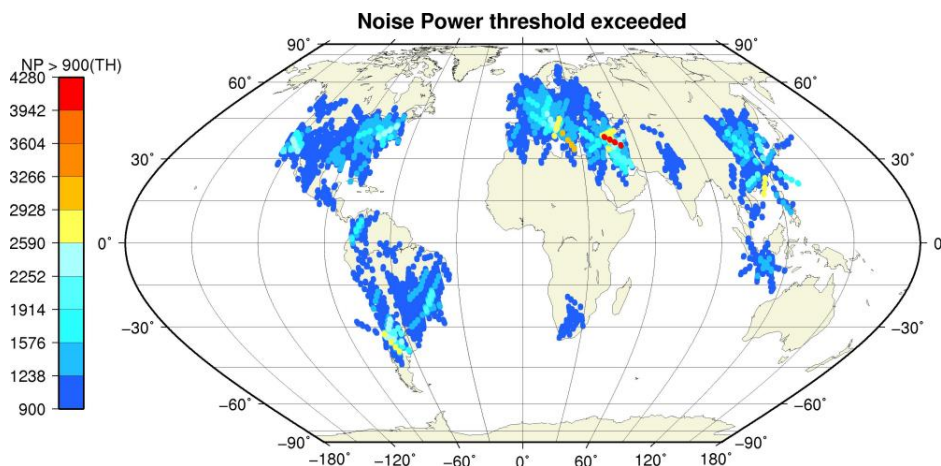
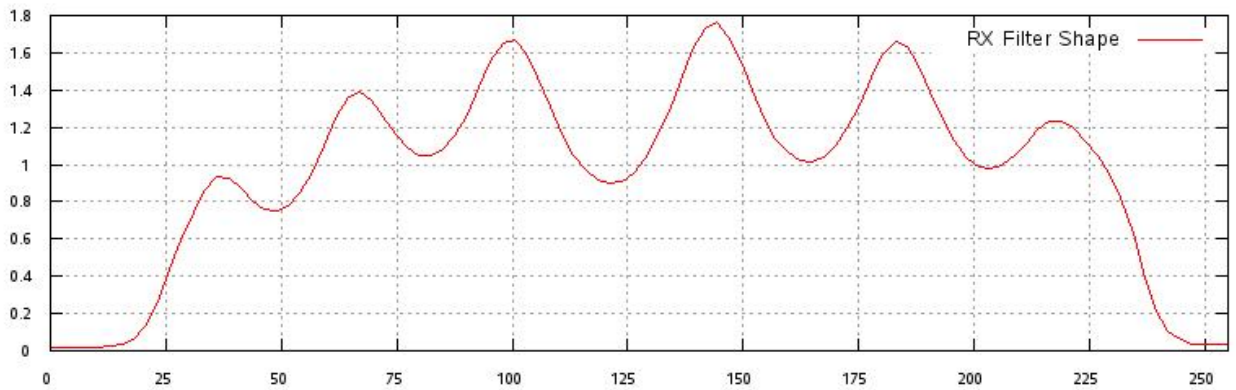
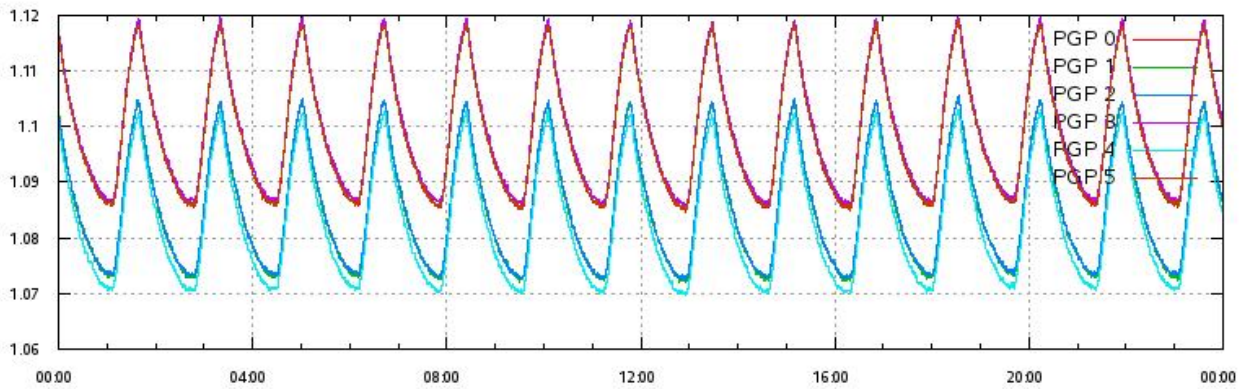
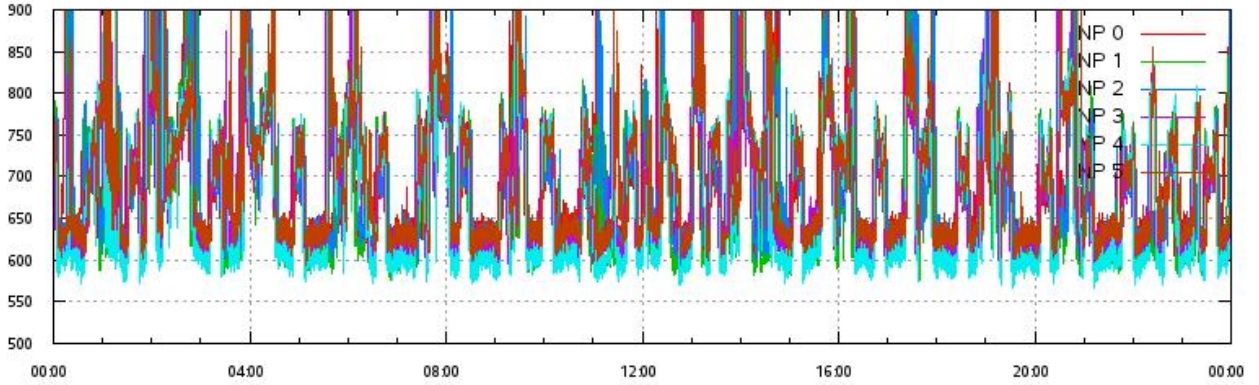
L1A Product

SFE & ANT Temperatures (raw) vs. UTC_LOCALISATION



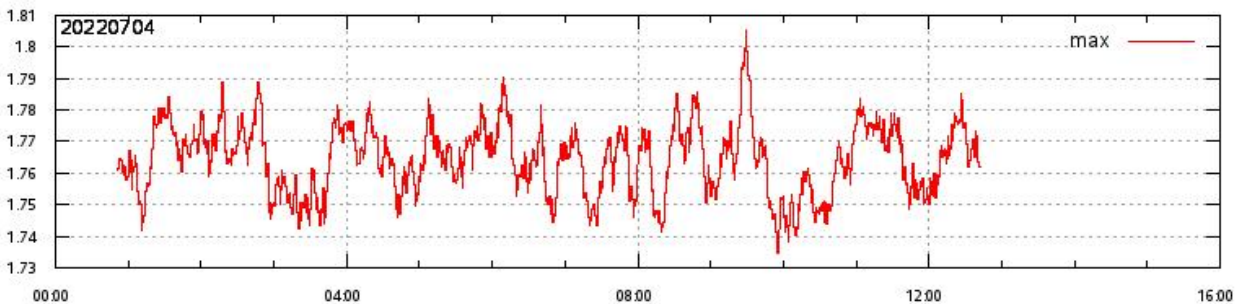
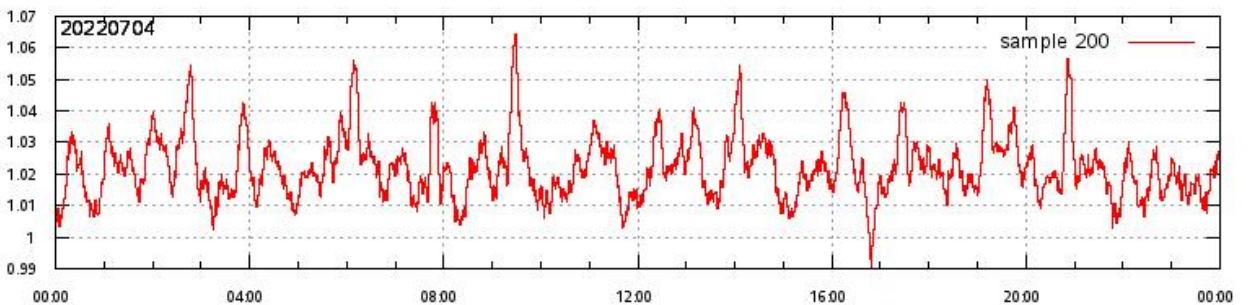
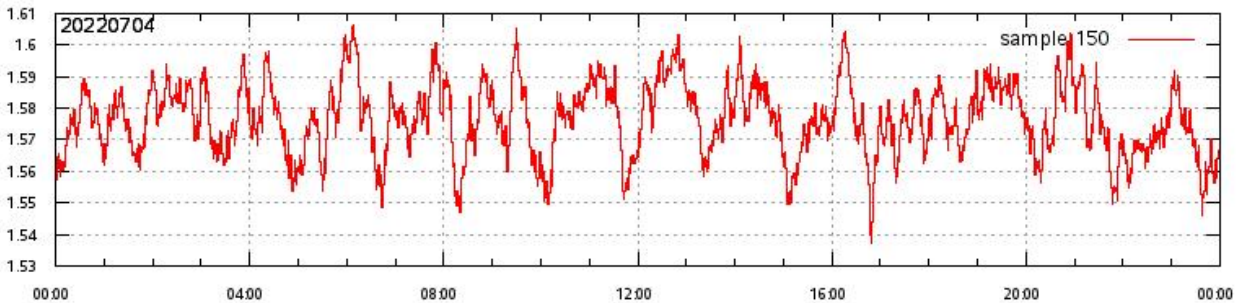
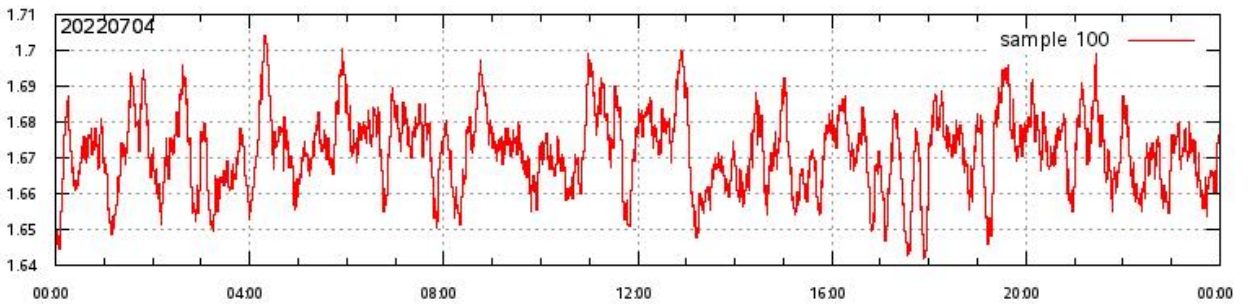
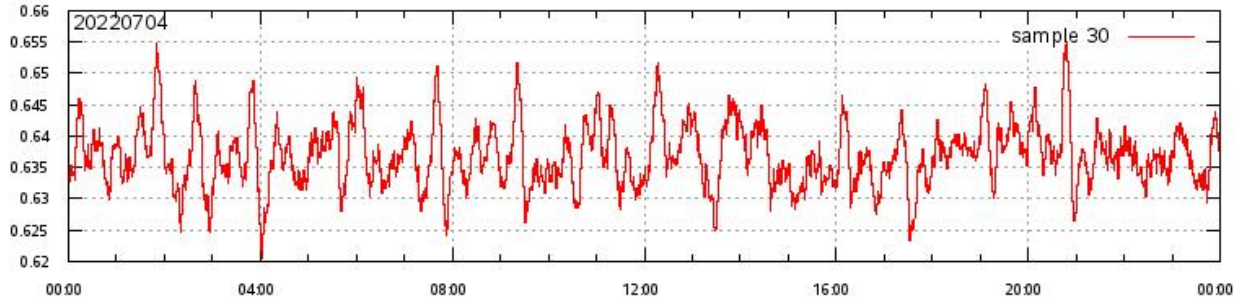
L1A Product

Noise Power & Power Gain Product per beam 0-5 vs. UTC_LOCALISATION
RX Filter Shape average over sample number
Noise Power threshold exceeded (TH=900) on map



L1A Product

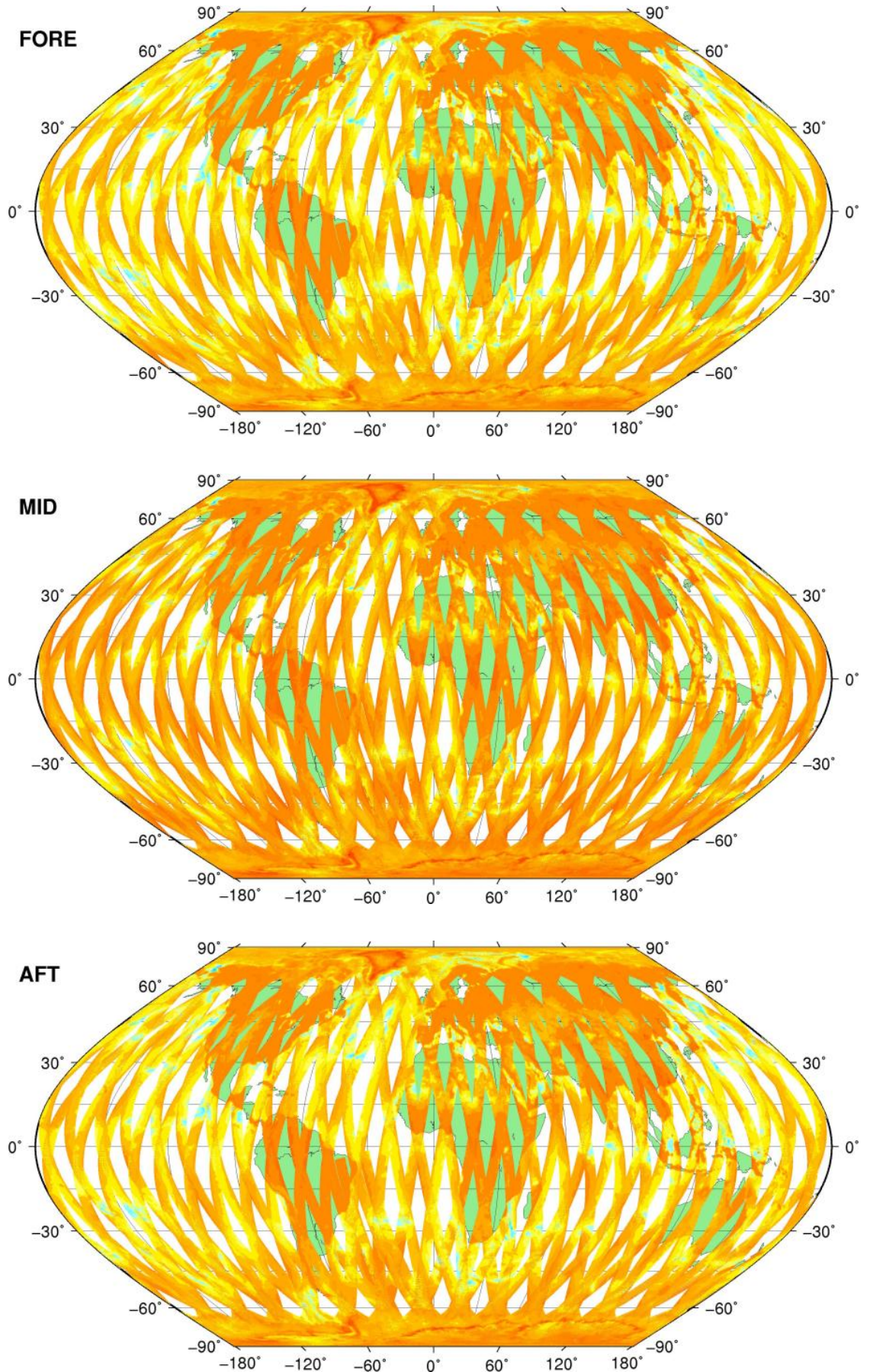
RX filter shape in detail for sample 30,100,150, 200 & max vs. UTC_LOCALISATION



SZO Product

Sigma0_TRIP Coverage map

SIGMA0_TRIP Coverage

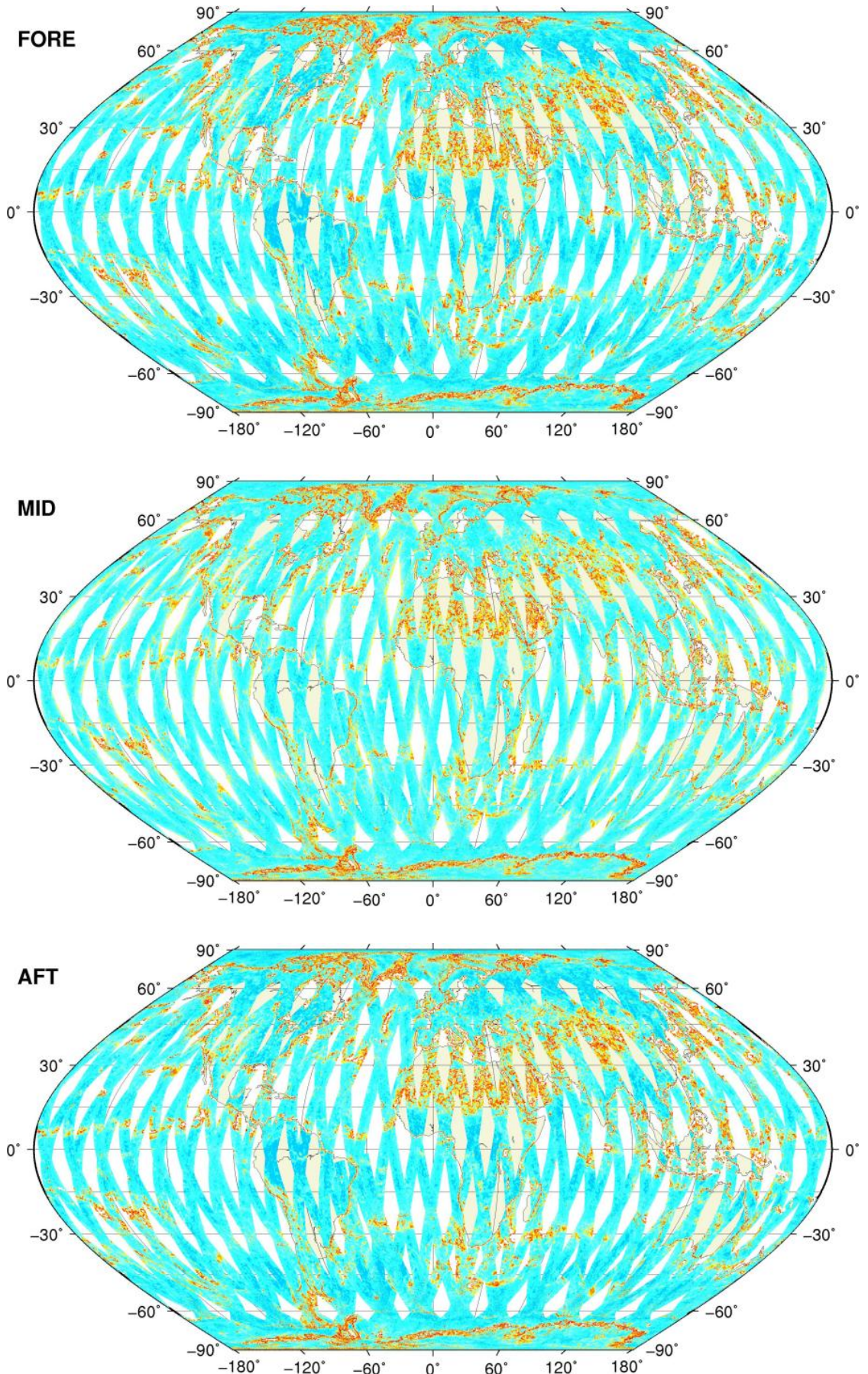


SZO Product

Kp Coverage map

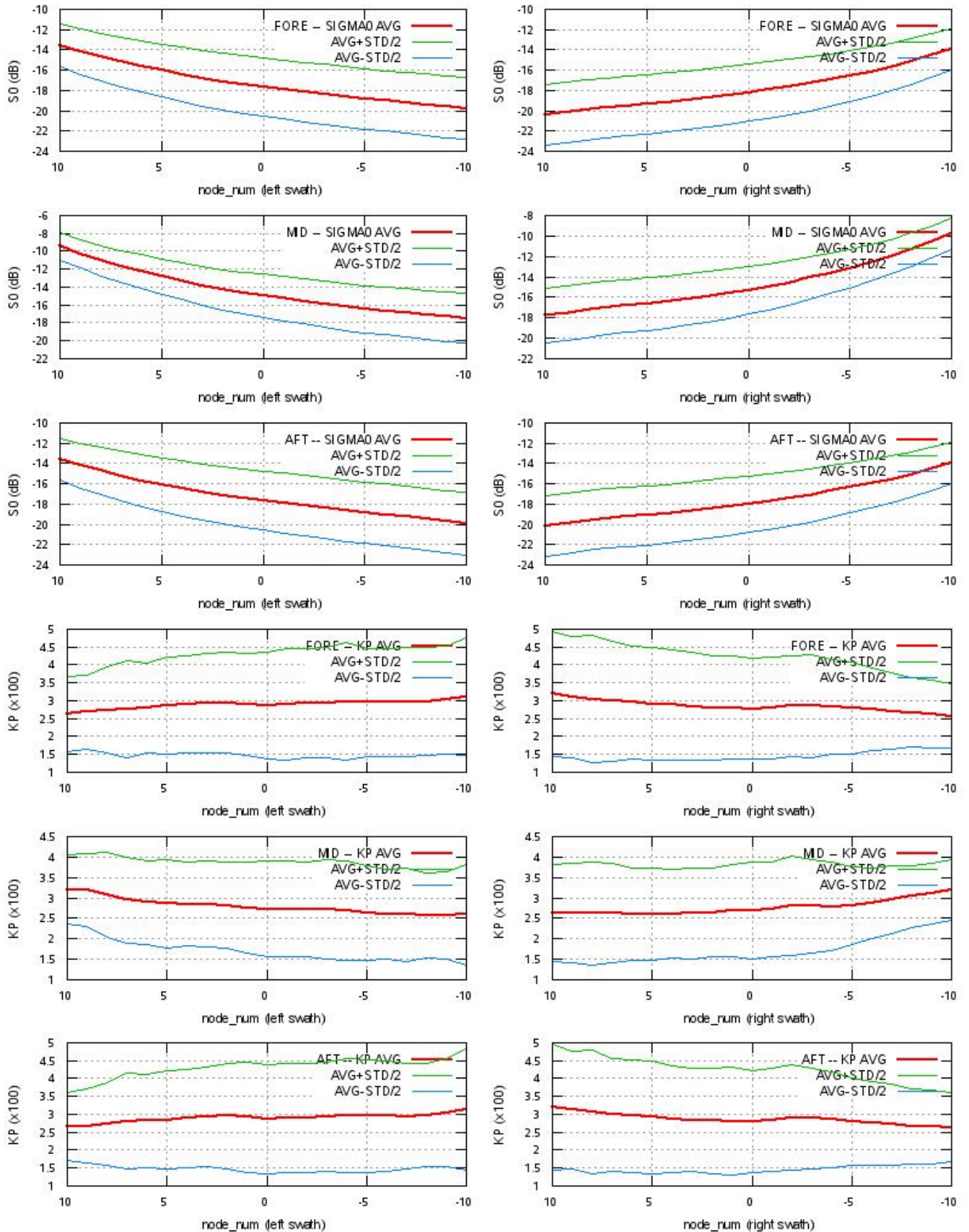
Kp Coverage

0.00 0.01 0.02 0.03 0.04 0.05 0.06



SZO Product

S0 - Kp Statistics



SZO Product

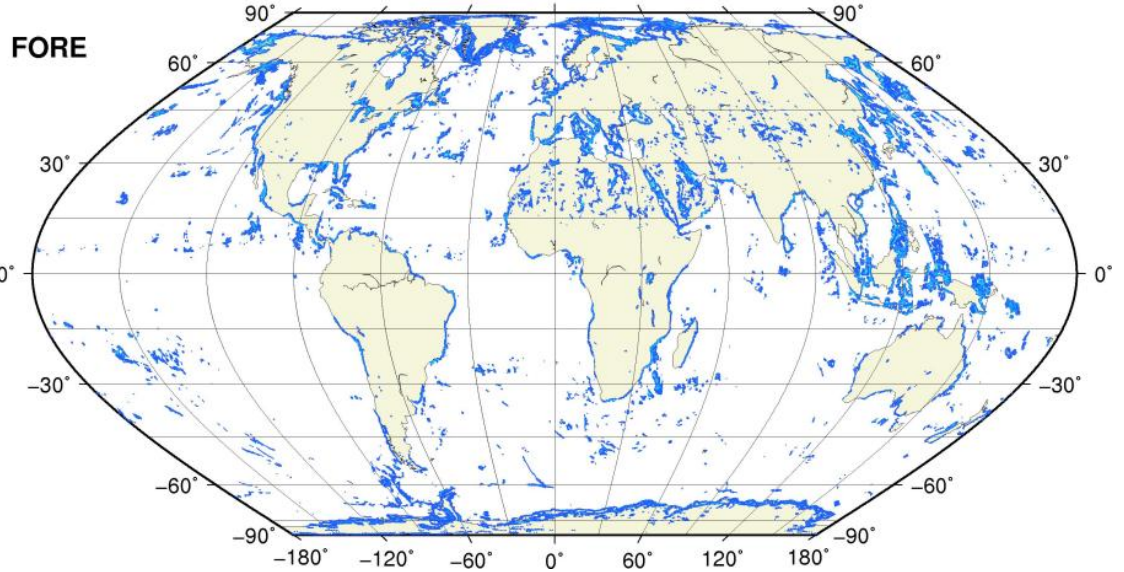
Kp Outliers on map

$0.06 < Kp < 1.0$

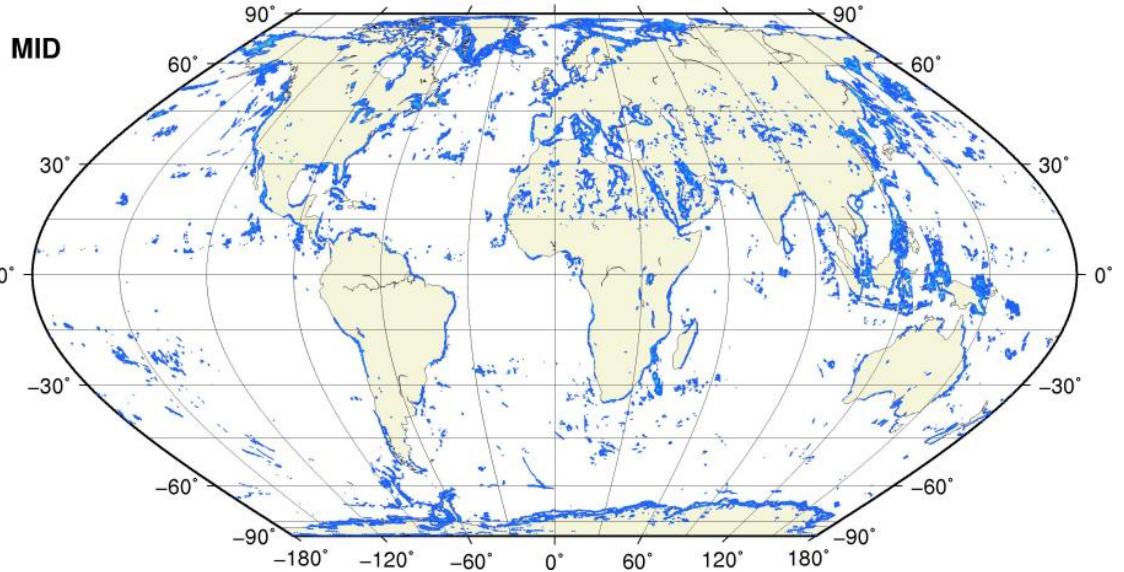
0.1 0.2 0.3 0.4 0.5 0.6 0.7 0.8 0.9 1.0



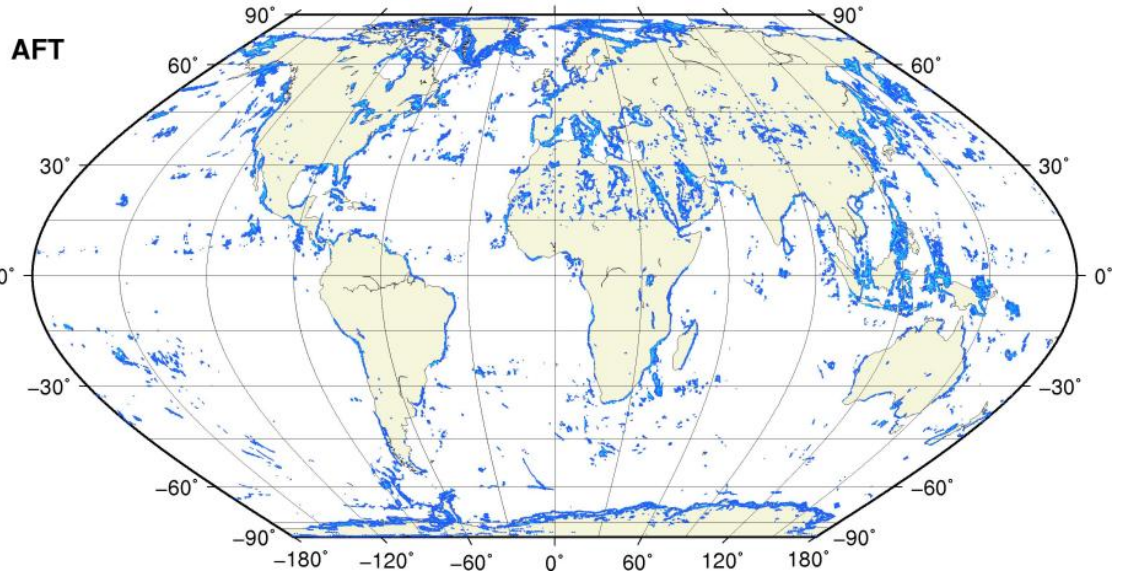
● KP = 1.0 #rec=0



● KP = 1.0 #rec=0



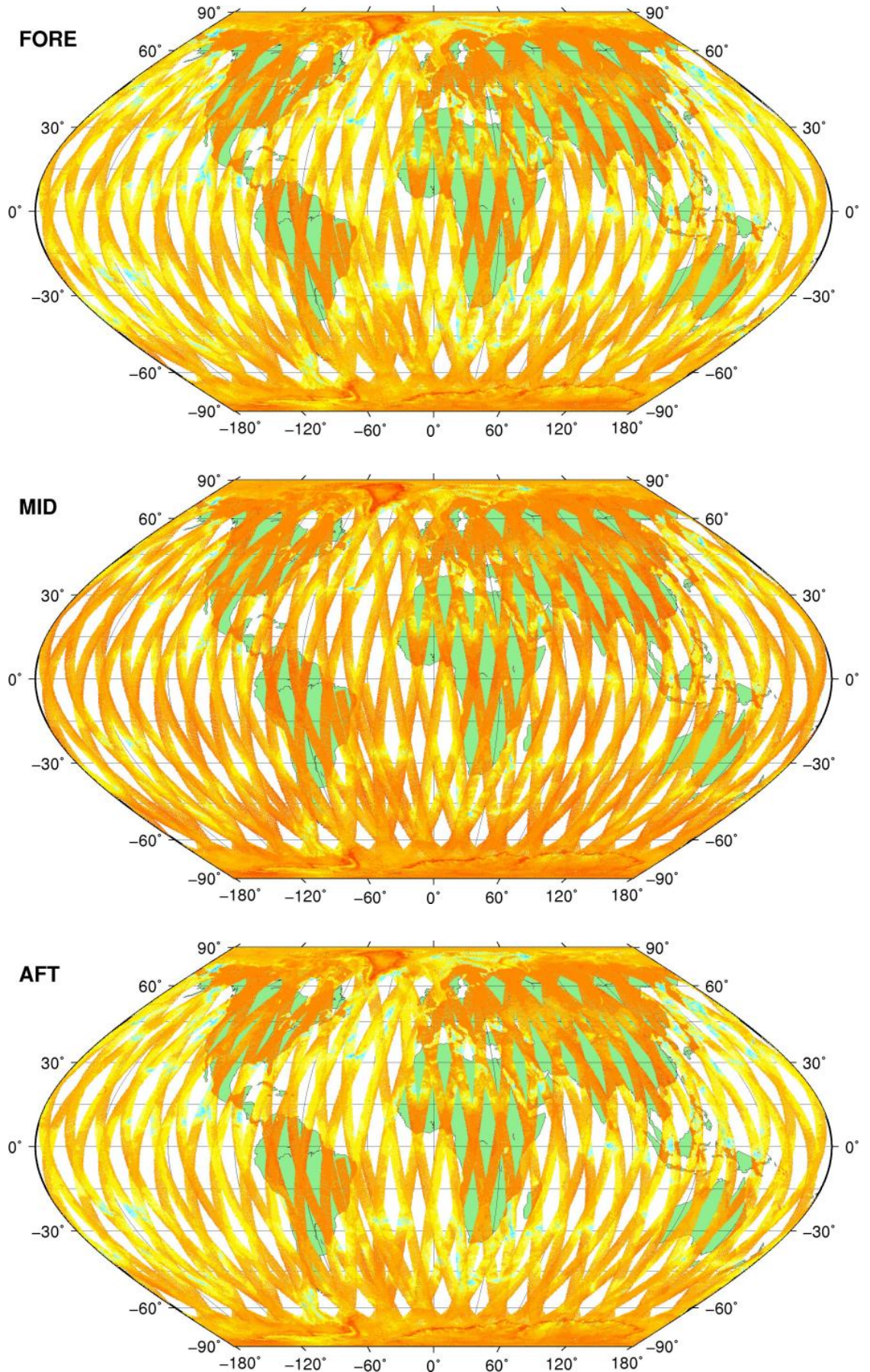
● KP = 1.0 #rec=0



SZR Product

Sigma0_TRIP Coverage map

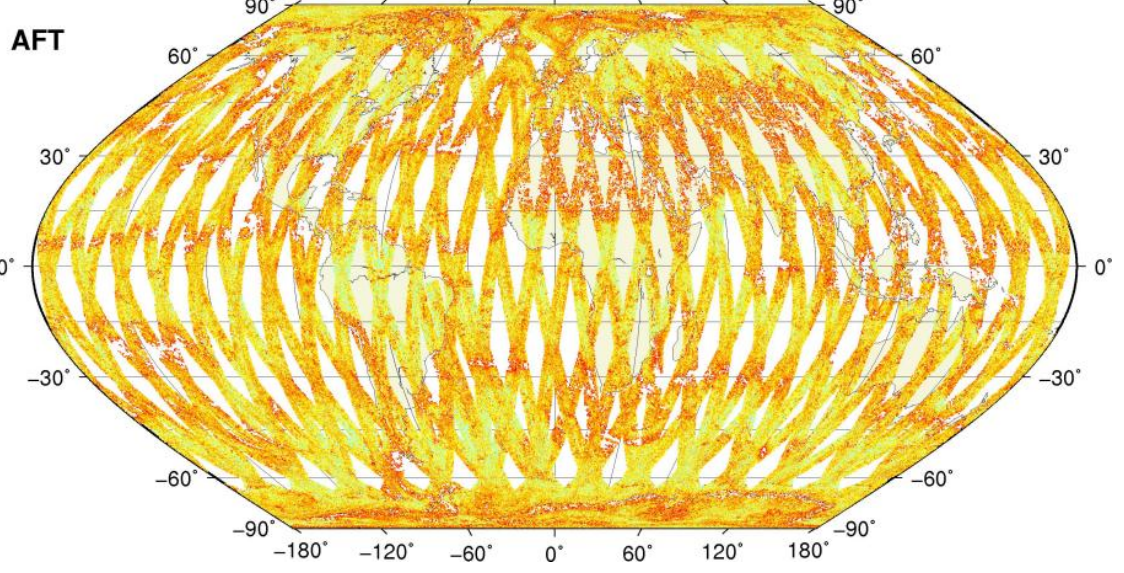
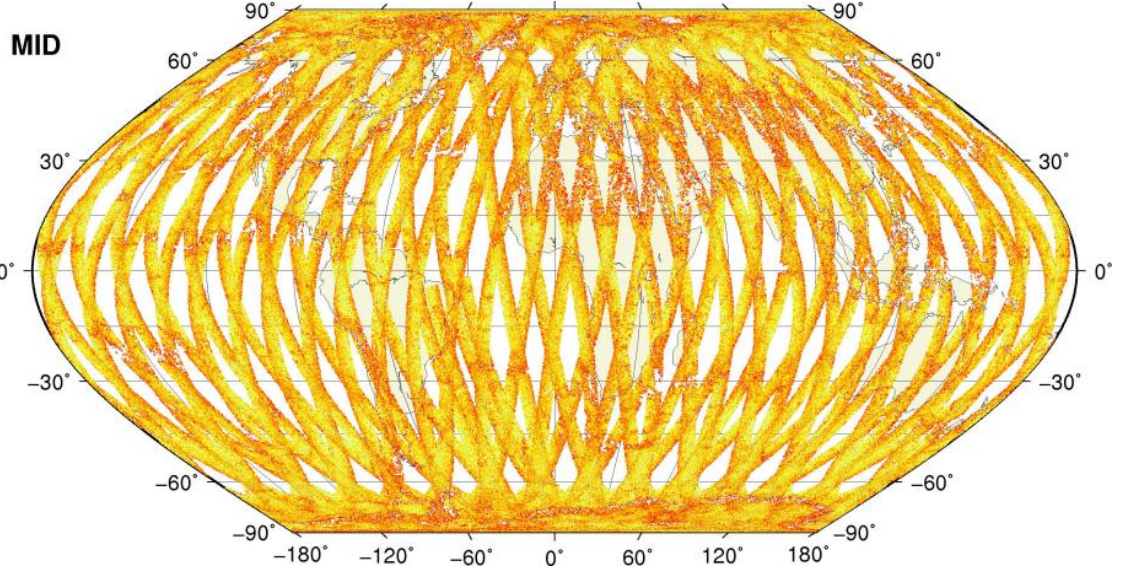
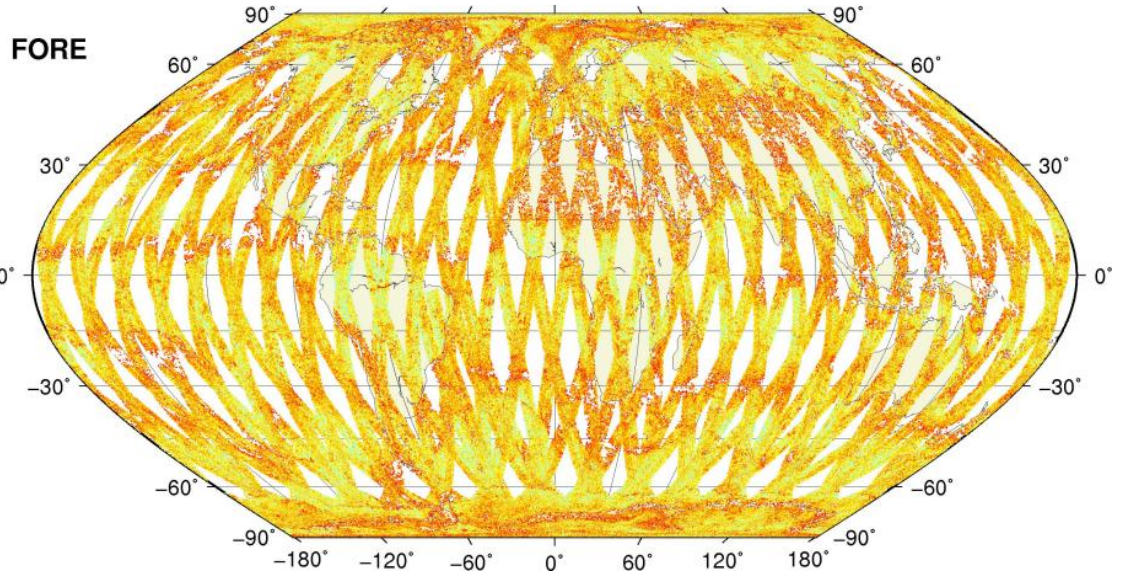
SIGMA0_TRIP Coverage



SZR Product

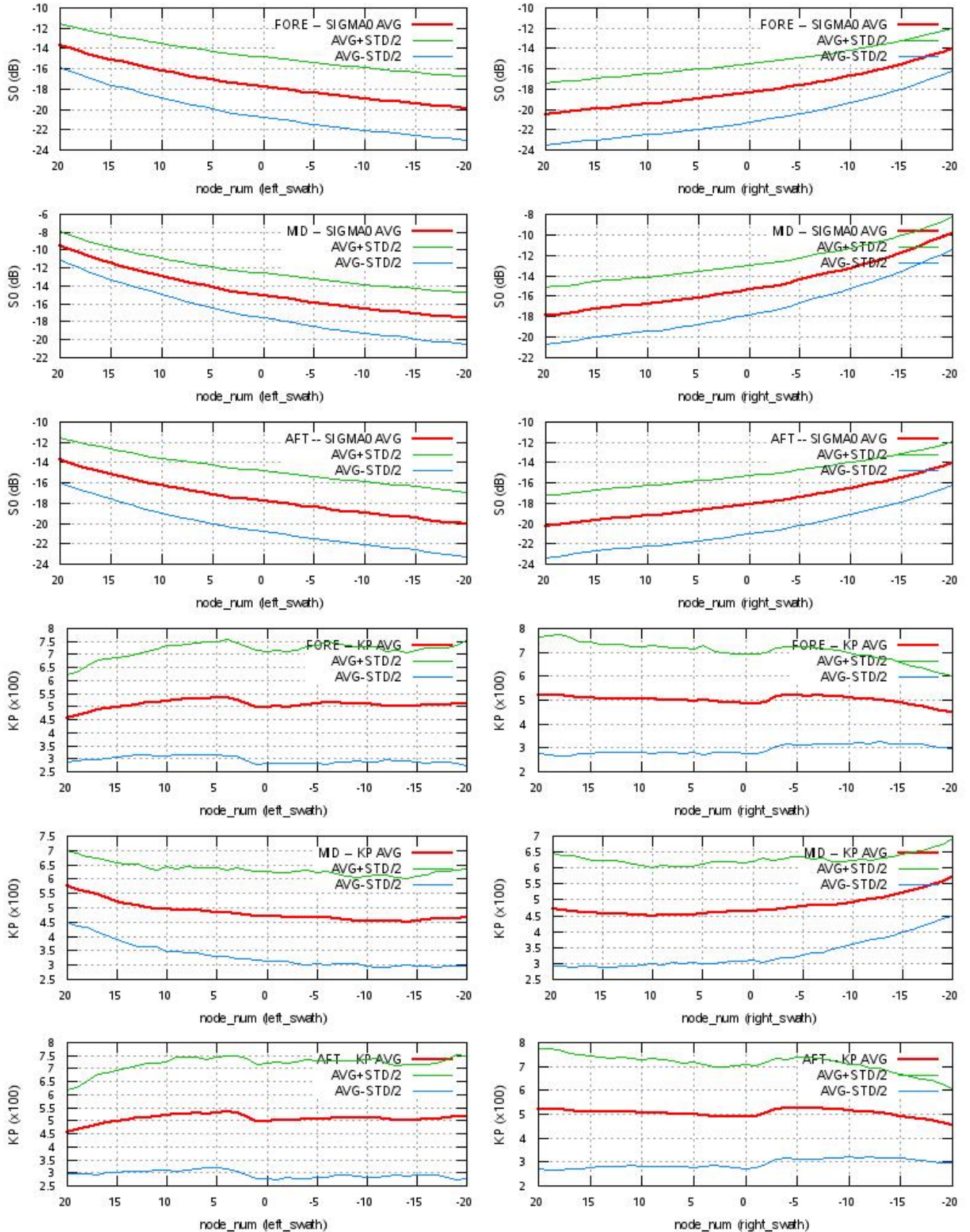
Kp Coverage map

Kp Coverage



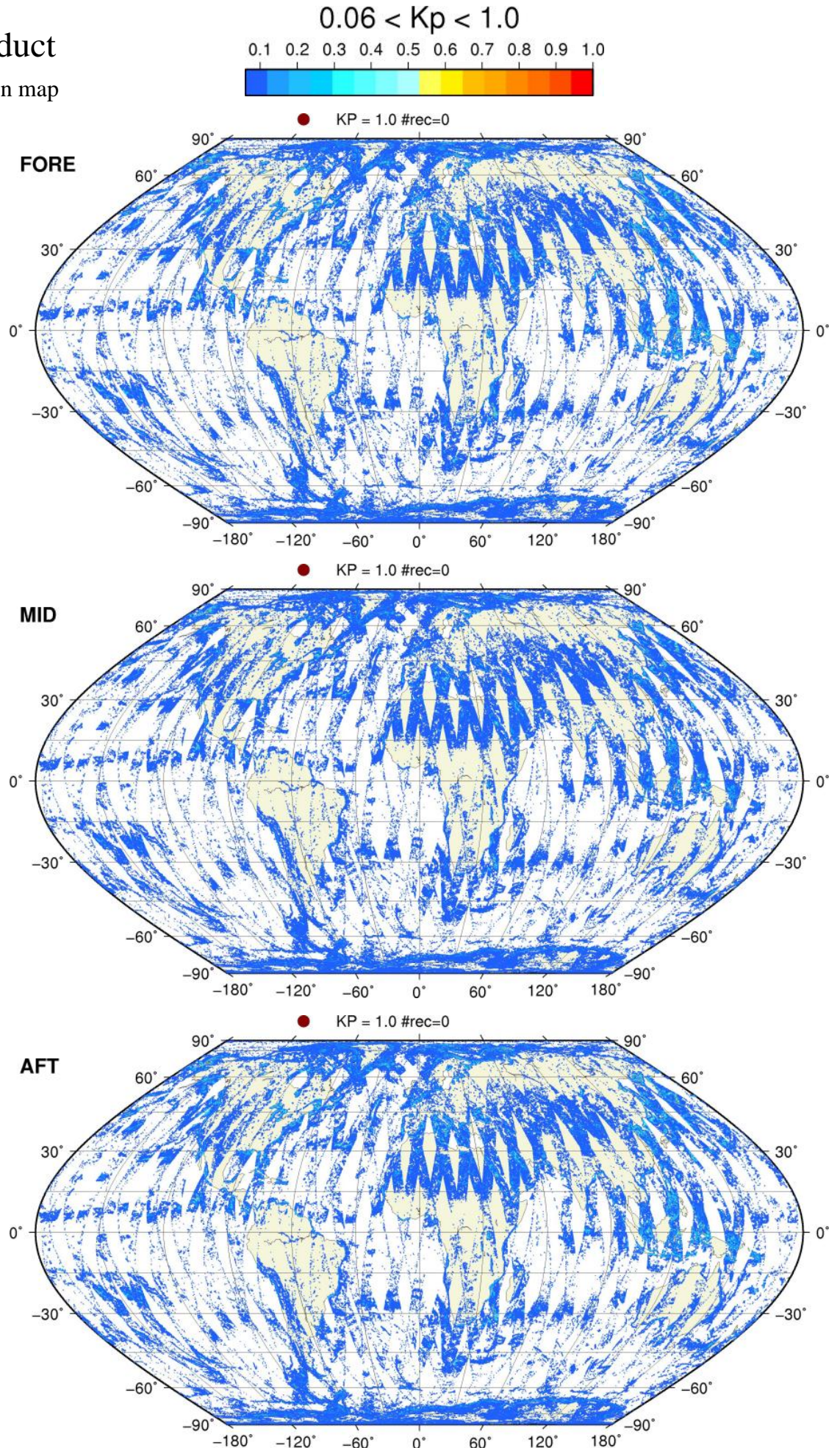
SZR Product

S0 - Kp Statistics



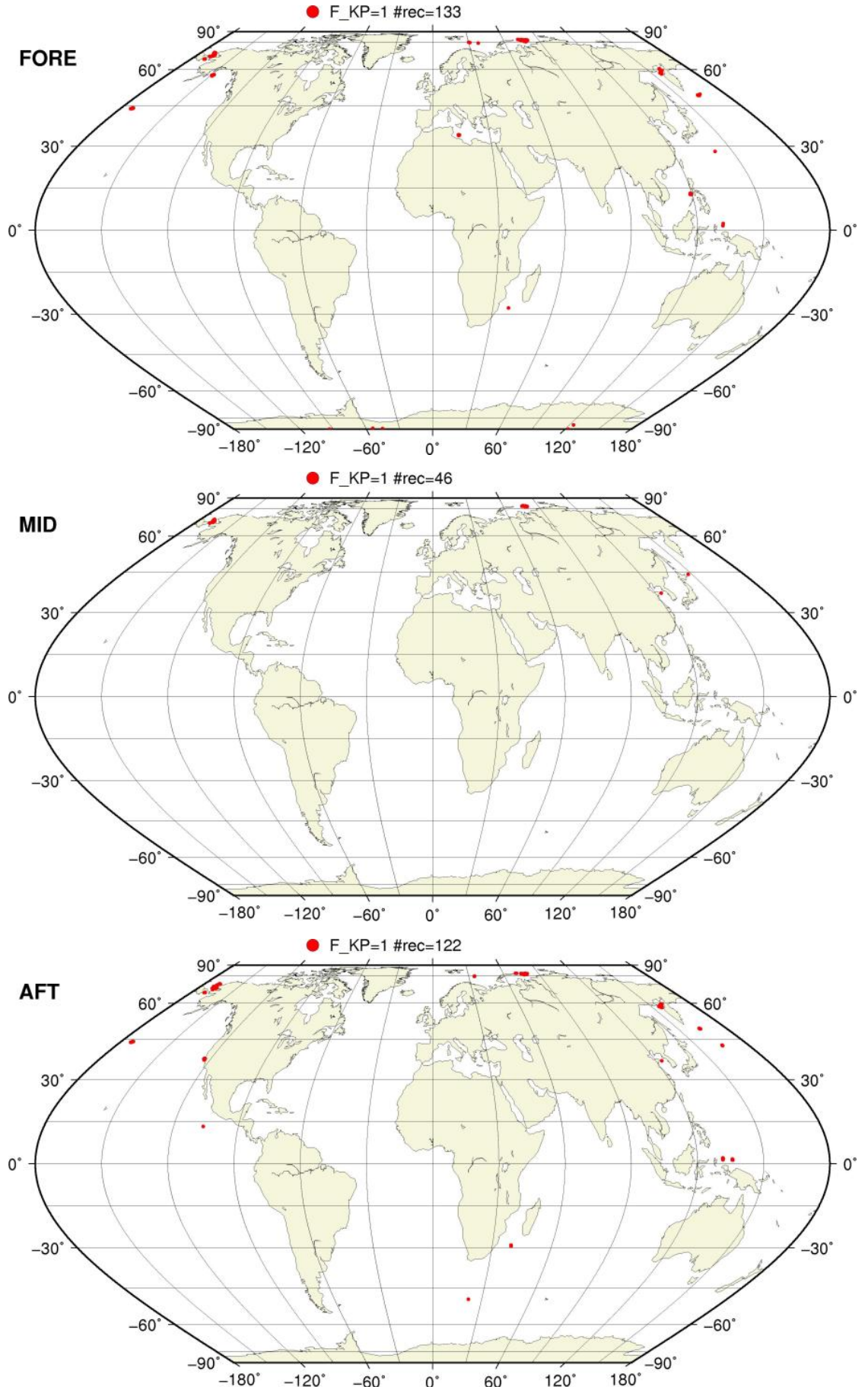
SZR Product

Kp Outliers on map



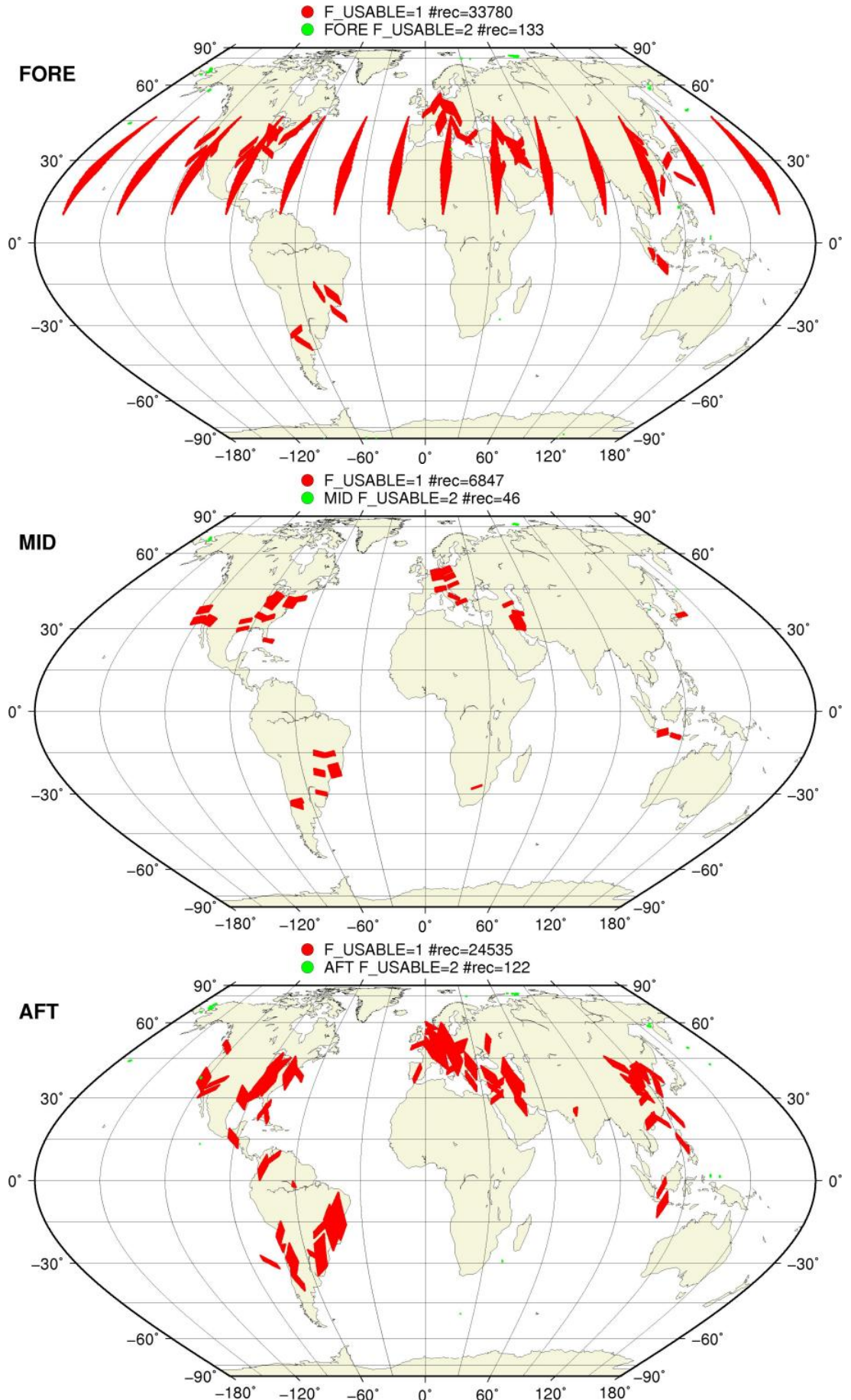
SZO Flagged Data Coverage

F_KP = 1 on map



SZO Flagged Data Coverage

F_USABLE = 1 or 2 on map



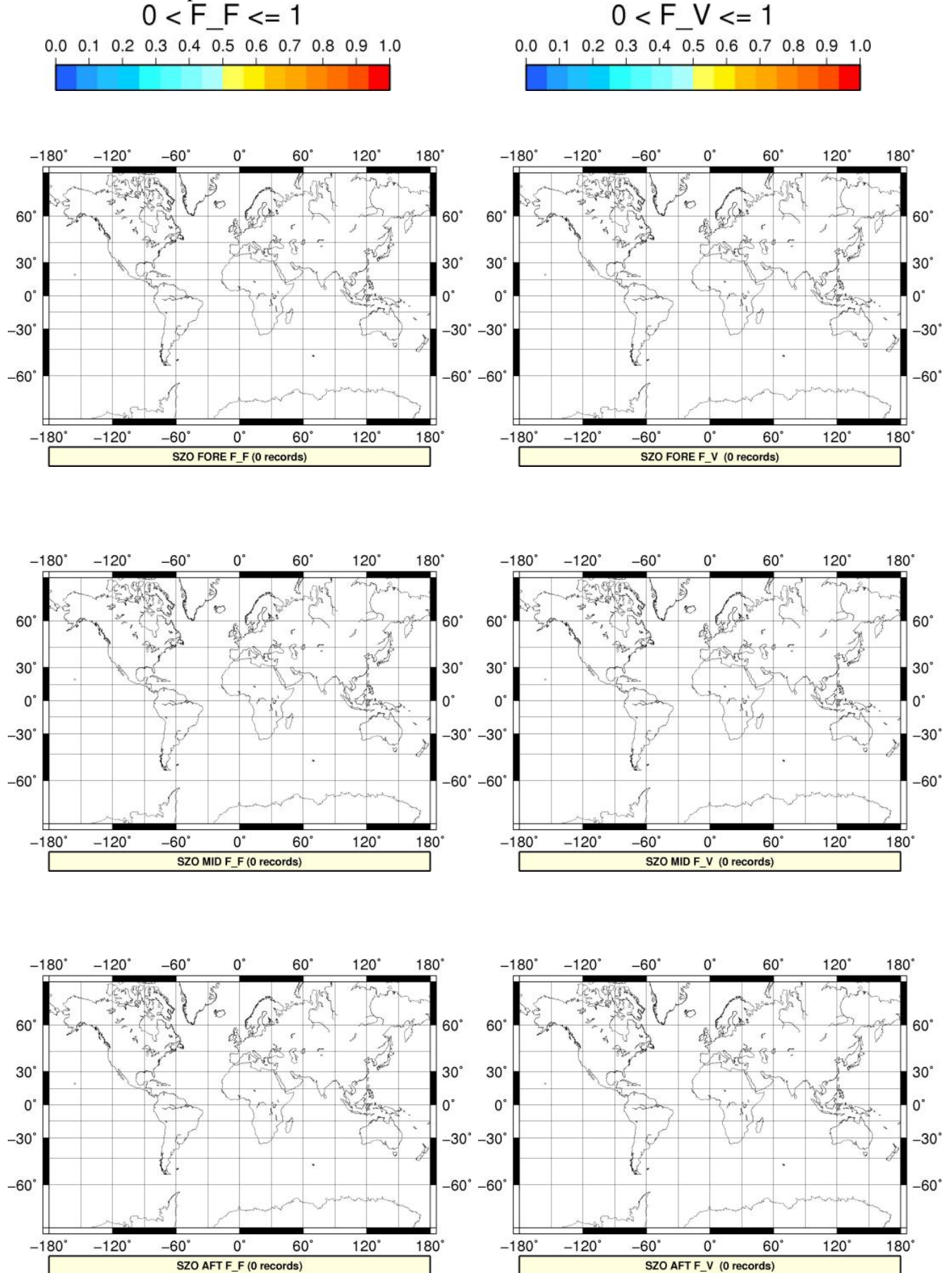
SZO Flagged Data Coverage

$0 < F_{OA} \leq 1$ on map



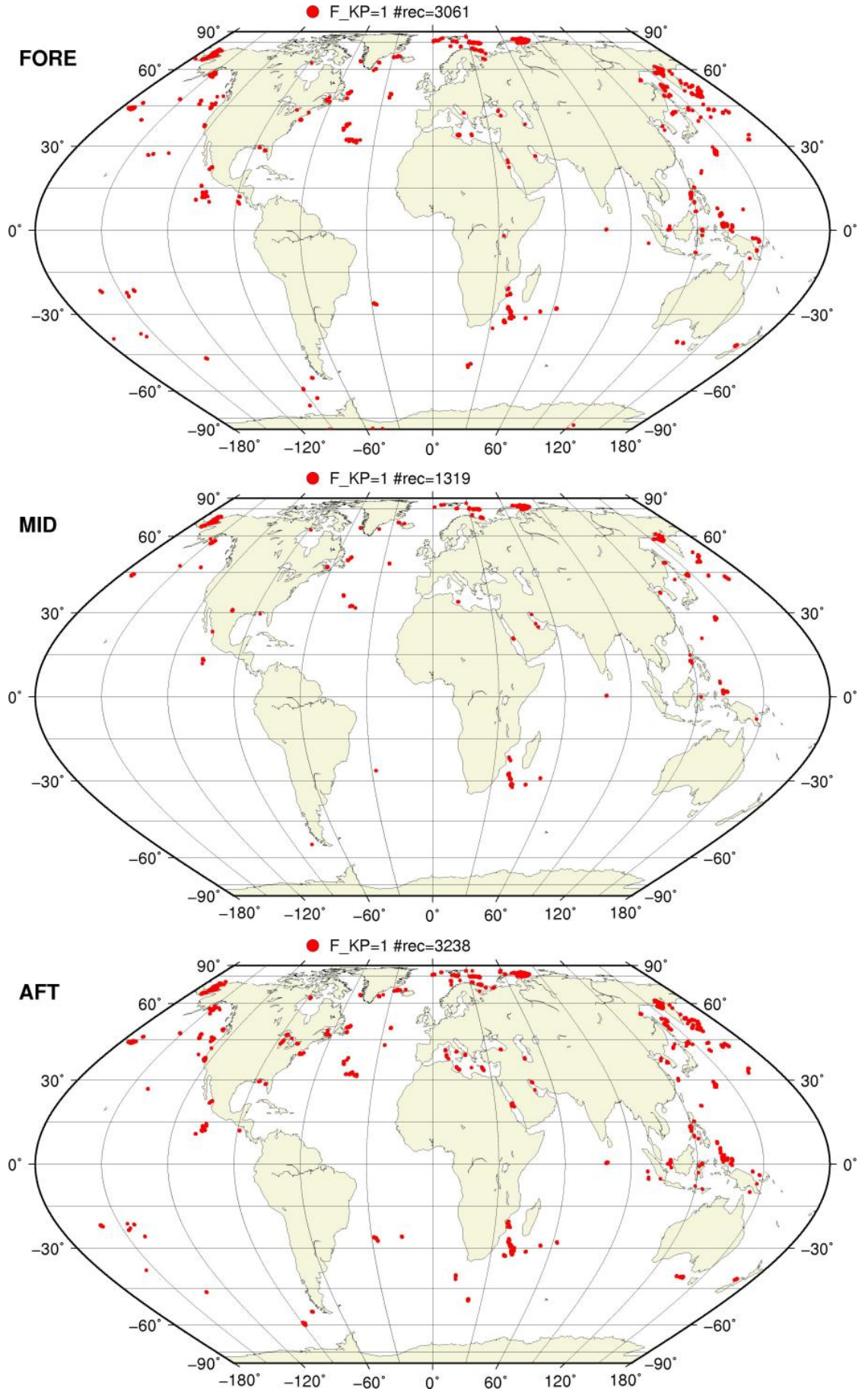
SZO Flagged Data Coverage

0 < F_F/V <=1 on map



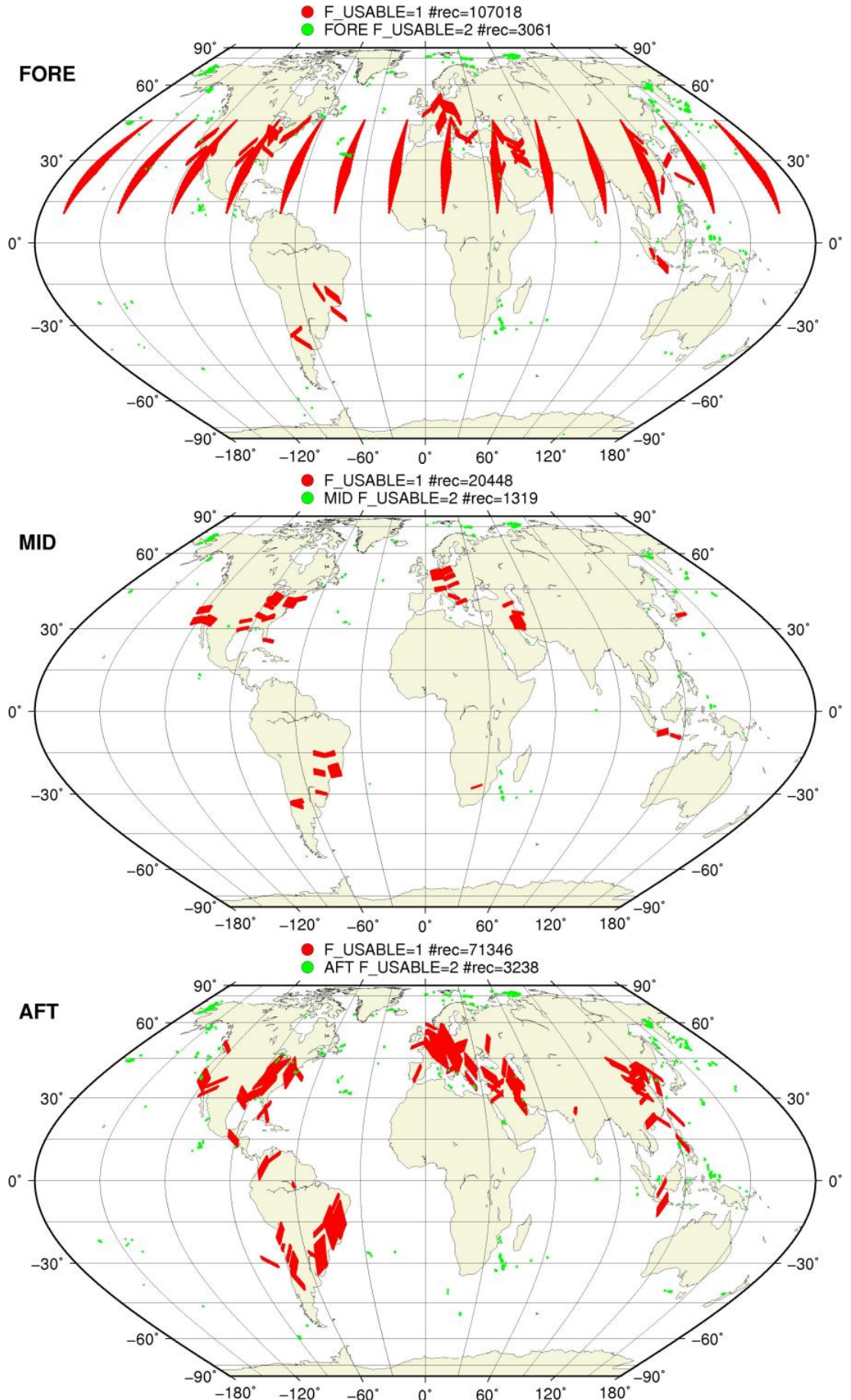
SZR Flagged Data Coverage

F_KP = 1 on map



SZR Flagged Data Coverage

F_USABLE = 1 or 2 on map



SZR Flagged Data Coverage

$0 < F_{OA} \leq 1$ on map



SZR Flagged Data Coverage

$0 < F_{F/V} \leq 1$ on map

